







-   
 Biometrics
-   
 RFID
-   
 Barcode
-   
 QR Code

# Qualica-RD CAPELLA

The high quality waterproof Alien Gate (IP65)

**CAPELLA** is a **bidirectional turnstile** with selector, in case you want to parameterize unidirectionally, for high performance and high reliability access control. Silent and robust with a technology that guarantees an average of **10 million uses** without impact on the "**brushless**" mechanics.

**3-year warranty.** It has an arm of 850 or 900mm to allow the passage of **wheelchairs** and **pedestrians with luggage**. With automatic reset function (parameterizable) if the user is delayed more than 5 seconds, LED indicator of entry and closing and easy installation and maintenance.

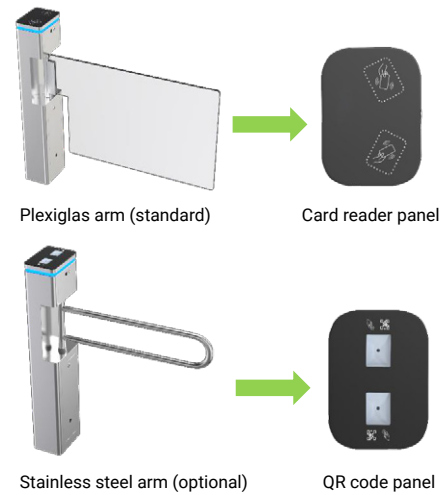
It is ideal for areas with pedestrian traffic: parks, schools, factories, libraries, cinemas, gyms, etc.



# CAPELLA Turnstile

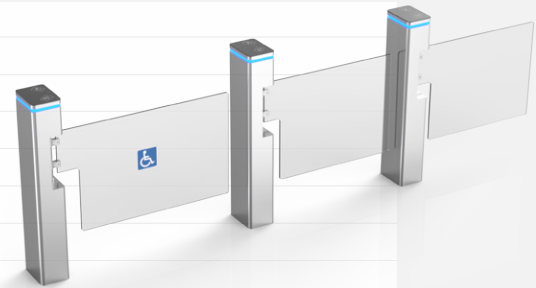
## Features

- The top cover is made of black tempered glass.
- The 230 wide cabinet is flexible to install RFID card reader.
- 900 mm arm for wide passage, wheelchair, and pedestrians with large luggage can also pass.
- Decorative LED light bar, gives aesthetics and distinction.
- Automatic reset function: the turnstile arm will automatically lock within 5 sec. (can be adjusted) if passenger delay at the entrance.



## Technical specifications

<b>Certification</b>	Compliance CE, ROHS
<b>Communication</b>	Dry contact, Relay signal, RS485
<b>Material</b>	304 brushed stainless steel+ high-end black tempered glass
<b>Arm material</b>	304 Stainless Steel or Plexiglas-transparency
<b>Dimension and Net Weight</b>	230 * 165 * 1050mm / 25kg/pcs
<b>Passage/arm Width</b>	≤900mm/Stainless steel arm length: 900mm; Plexiglas-transparency arm length: 850mm
<b>Passing Direction</b>	Single directional and Bi-directional
<b>MCBF</b>	10 million
<b>Power Supply</b>	AC220V/110V, 50/60Hz
<b>Operation Voltage / Power</b>	24V DC / 20W
<b>Operation Temperature</b>	-20 °C - 75 °C
<b>Operation Humidity</b>	0 ~ 95% (No freeze)
<b>Working Environment</b>	Indoor / Outdoor Waterproof
<b>Flow Rate</b>	35~40 people per minute
<b>LED Indicator</b>	Unique blue LED strip
<b>Emergency</b>	Arms will open automatically
<b>Flexibility</b>	Integrate with any access control



## Dimensions (mm)

