

The Installer's Choice



Adaptable



Convenient



Secure



Intuitive



Reliable



Why **ATRIUM** ?

Developed with the end user in mind, ATRIUM web-based access control system features an **easy-to-use app and free software**, providing the user with a fast and reliable method to control access to one or multiple sites.

Controlling **up-to 500 doors**, the ATRIUM system gives users the ability to allow or deny access wherever they are and whenever they want, enabling compliance with the DPA2018. ATRIUM offers full integration with CCTV and Security Alarm systems.

Reliability is essential to gain confidence in a system, and this confidence is equally important to the installer and end-user alike. With **free in-house training available at CDVI**, every installer will be able to truly offer a full access control package to their clients.



| Main Features | Benefits |
|---|---|
| 500 Reader Capacity | Small to large site applications |
| 10,000 Cardholders | Provision for high traffic environments |
| Embedded Web Server | Fast access to system from anywhere |
| Faster Network | No need for PC connection |
| Free Management Software (100 sites) | Comprehensive database & reporting |
| 1000 Access Levels / 250 Schedules | Control who goes where by time & date |
| Wireless Handles & Cylinders | Reduce costs with Aperio wireless |
| Email Notification | Immediate alert of specified events |
| Cardholder Reports | Who is in the building and their location |
| One Click Interlock | Create a secure area between doors |
| IP Camera Monitoring | Visual confirmation of status |
| Intruder Alarm Control | Automatically arm/disarm areas by card |
| Anti-Passback | Prevents misuse of cards |
| POE Ultra 66 Watt's | Power 2 doors via the network |
| SDK | Third party integration |

*Please check with CDVI Ltd for supported IP cameras

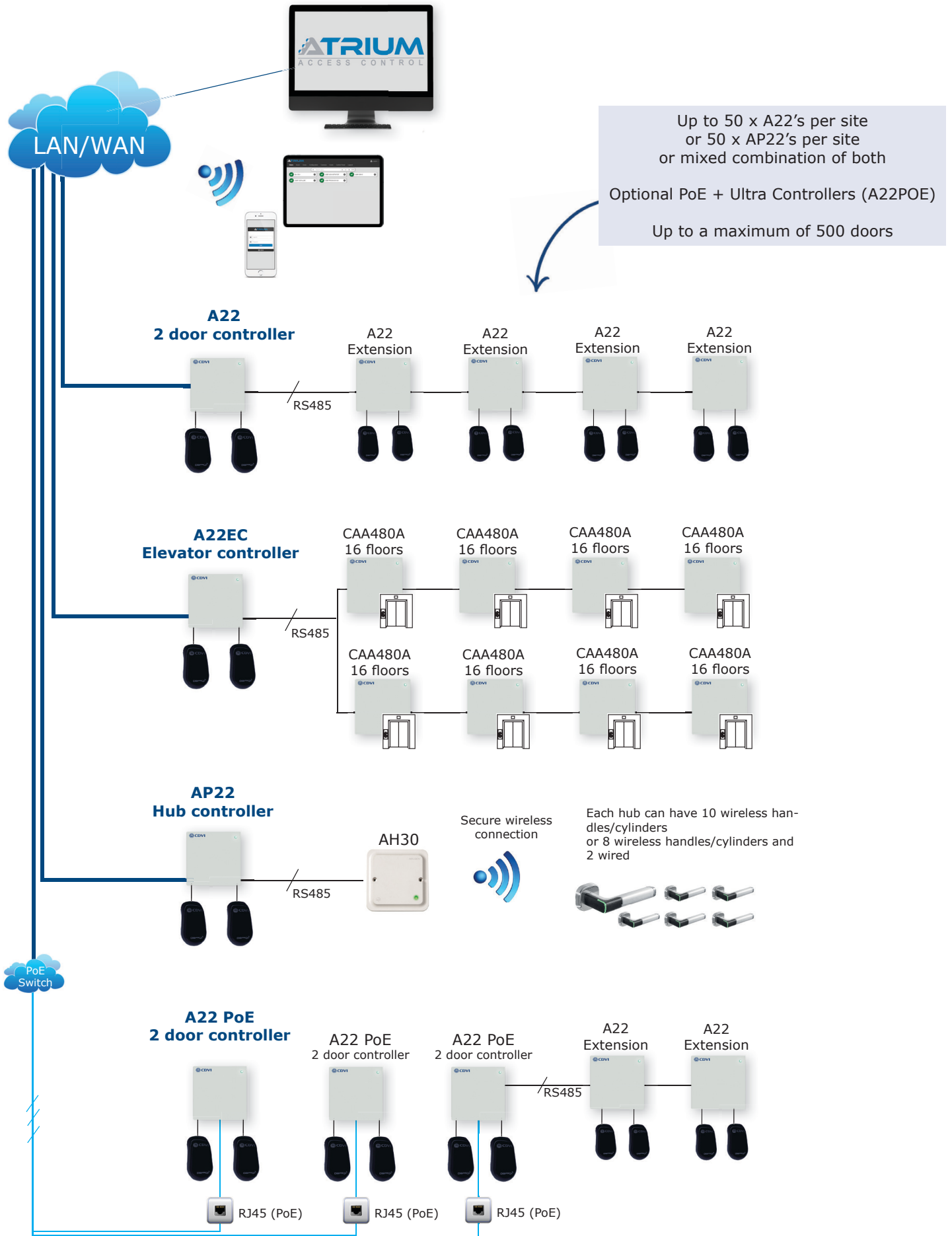
Recently added features (V4.3)

Wireless Handles & Cylinders (Aperio)
 Lockdown, Evacuation & Invacuation
 Elevator Controller
 Texecom Alarm integration
 New video cameras integration

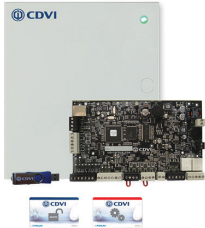
ATRIUM is constantly evolving, to ensure that installers and end-users alike are provided with the latest technical advances in the field of access control and integration.

Make sure you are kept updated by subscribing to our newsletter at: www.cdvi.co.uk

The **ATRIUM** possible combinations



A22 - ATRIUM 2-door Controller/Expander



- Metal cased for security
- Built in PSU & battery charger
- AES 256 encryption
- Up to 10,000 users
- Includes free software

| Reference | Description |
|-----------|-----------------------------|
| A22 | ATRIUM 2-door controller |
| A22POE | ATRIUM PoE Ultra controller |
| PoE+I | PoE + Injector |

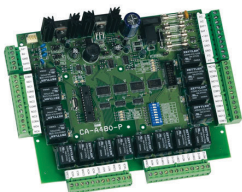
AIOM - 10 input/output module



- Up to 20 inputs using zone doubling technology
- 10 outputs
- Auto-detect technology
- Direct RS485 connection to A22
- LED status indicator

| Reference | Description |
|-----------|------------------------|
| AIOM | 10 input/output module |

A22EC - Elevator Controller



- Firmware upgrade from A22
- Destination reporting module
- Up to 64 floors
- Up to 10,000 users
- Includes free software

| Reference | Description |
|-----------|------------------------------|
| A22EC | ATRIUM Elevator Controller |
| CAA480A | Relay Module |
| CAA482P | Destination Reporting Module |

AP22 - ATRIUM Aperio Enabled Controller/Expander



- Metal cased for security
- Built in PSU & battery charger
- AES 256 encryption
- Up to 10,000 users
- Includes free software

| Reference | Description |
|--------------------|--|
| AP22 | ATRIUM Aperio Enabled Controller/ Expander |
| AH30 | Aperio hub |
| E100 / C100 / H100 | Aperio wireless handle |

ATRIUM Accessories



USB

- Direct connection to database
- No driver required
- Portable unit for multi-site use

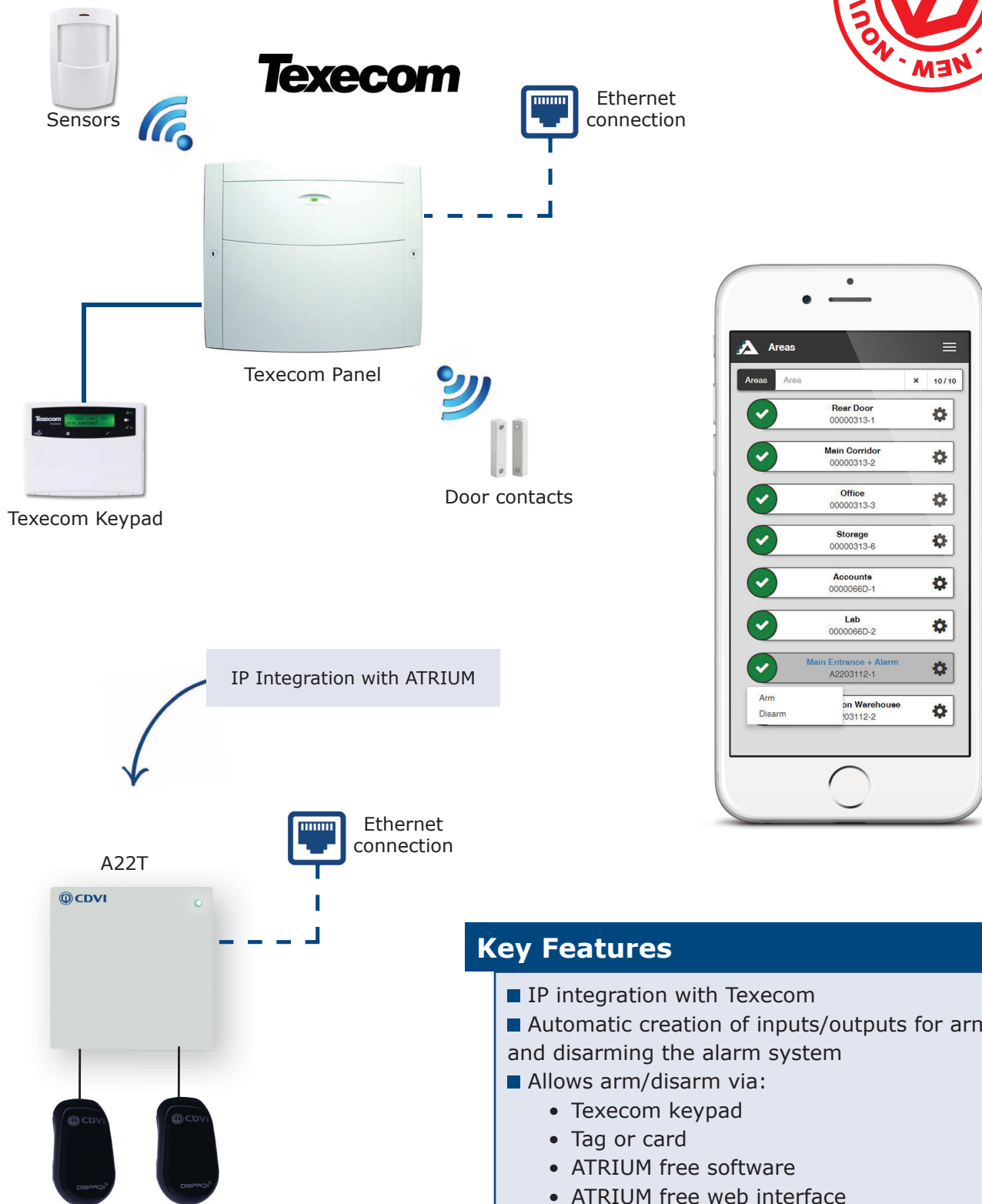
| Reference | Description |
|-----------------|-------------------------------------|
| R125USB | Proximity enrolment reader, USB |
| R1356USB | MIFARE enrolment reader, USB |
| SEL2641R433-SAT | Pluggable radio receiver for ATRIUM |
| SEA433 | Tuned aerial with L bracket |



RADIO

- Plugs directly into controller
- Up to 100m range
- Tuned antenna included

A22 - Texecom Integration



Key Features

- IP integration with Texecom
- Automatic creation of inputs/outputs for arming and disarming the alarm system
- Allows arm/disarm via:
 - Texecom keypad
 - Tag or card
 - ATRIUM free software
 - ATRIUM free web interface
- Arm multiple areas in one action
- "First man in" function - reduces false alarms