

## Hinges for removable doors



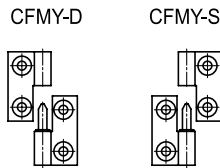
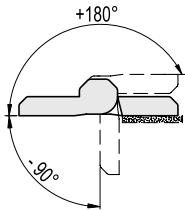
- **Material**  
Glass-fibre reinforced polyamide based (PA) SUPER-technopolymer. Resistant to solvents, oils, greases and other chemical agents.
- **Colour**  
Black, matte finish.
- **Rotating pin**  
Self-lubricating glass-fibre reinforced polyamide based (PA) technopolymer, black colour.
- **Standard executions**  
Pass-through holes for countersunk head screws.
  - **CFMY-D**: rotation pin fitted on the right hinge body.
  - **CFMY-S**: rotation pin fitted on the left hinge body.

### Rotation angle (approximate value)

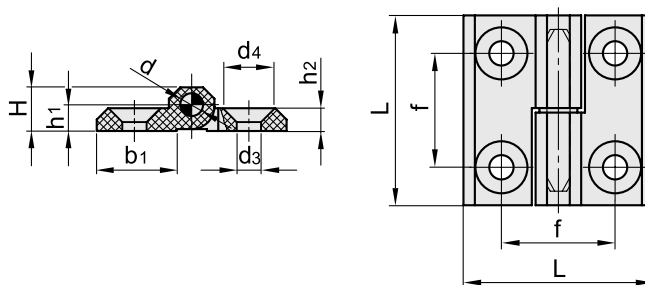
Max 270° (-90° and +180° being 0° the condition where the two interconnected surfaces are on the same plane).

Do not exceed the rotation angle limit so as not to prejudice the hinge mechanical performance.

Per scegliere il tipo ed il numero di cerniere da utilizzare in ogni applicazione, consultare le Guidelines.



	AXIAL STRESS	RADIAL STRESS	90° ANGLED STRESS
Test di resistenza			
Description	Static load max limit Sa [N]	Static load max limit Sr [N]	Static load max limit S90 [N]
CFMY.60	2050	1600	1250



Conversion Table	
1 mm = 0.039 inch	
L	
mm	inch
60	2.36

Code	Description	L	f±0.25	H	h1	h2	b1	d	d3	d4	C# [ft lb] [Nm]	⚖️
425965	CFMY.60 SH-6-D	60	36	15	8.5	8	26	6	6.5	12.5	5	41
425966	CFMY.60 SH-6-S	60	36	15	8.5	8	26	6	6.5	12.5	5	41
425961	CFMY.60-SH-8-D	60	36	15	8.5	8	26	8	8.5	16.5	5	41
425962	CFMY.60-SH-8-S	60	36	15	8.5	8	26	8	8.5	16.5	5	41

# Suggested tightening torque for assembly screws.