

Hinges



Material

High-resilience polyamide based (PA) technopolymer. Resistant to solvents, oils, greases and other chemical agents.

Colour

Black, matte finish.

Rotating pin

AISI 303 stainless steel.

Standard execution

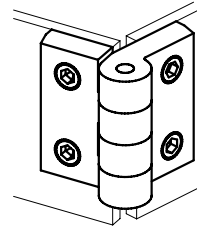
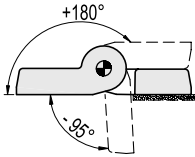
Pass-through holes for cylindrical head screws.

Rotation angle (approximate value)

Max 275° (-95° and +180° being 0° the condition where the two interconnected surfaces are on the same plane).

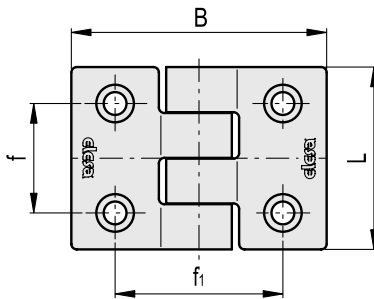
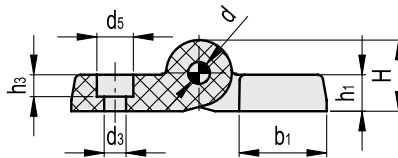
Do not exceed the rotation angle limit so as not to prejudice the hinge mechanical performance.

Per scegliere il tipo ed il numero di cerniere da utilizzare in ogni applicazione, consultare le Guidelines



Resistance tests

| Axial Stress | | Radial Stress | | 90° Angled Stress | |
|-----------------------------|-------------------------|-----------------------------|-------------------------|------------------------------|--------------------------|
| Maximum working load Ea [N] | Load at breakage Ra [N] | Maximum working load Er [N] | Load at breakage Rr [N] | Maximum working load E90 [N] | Load at breakage R90 [N] |
| 200 | 2440 | 380 | 3830 | 190 | 1950 |



| L | | d5 | |
|----|------|----|------|
| mm | inch | mm | inch |
| 50 | 1.97 | 10 | 0.39 |
| | | 13 | 0.51 |

| Code | Description | L | B | f±0.25 | f1±0.25 | H | h1 | h3 | b1 | d | d3 | d5 | C# [ft lb] [Nm] | ⚖️ |
|--------|-------------|----|------|--------|---------|------|----|-----|----|---|-----|----|-----------------------|----|
| 424021 | CFH.50 CH-6 | 50 | 69.5 | 30 | 45.5 | 19.5 | 10 | 6.5 | 24 | 6 | 6.5 | 10 | 3 | 46 |
| 424031 | CFH.50 CH-8 | 50 | 69.5 | 30 | 45.5 | 19.5 | 10 | 4.5 | 24 | 6 | 8.5 | 13 | 3 | 42 |

Suggested tightening torque for assembly screws.

