



# SEWING *for all* SEASONS

24 STYLISH PROJECTS TO STITCH THROUGHOUT THE YEAR



SUSAN BEAL

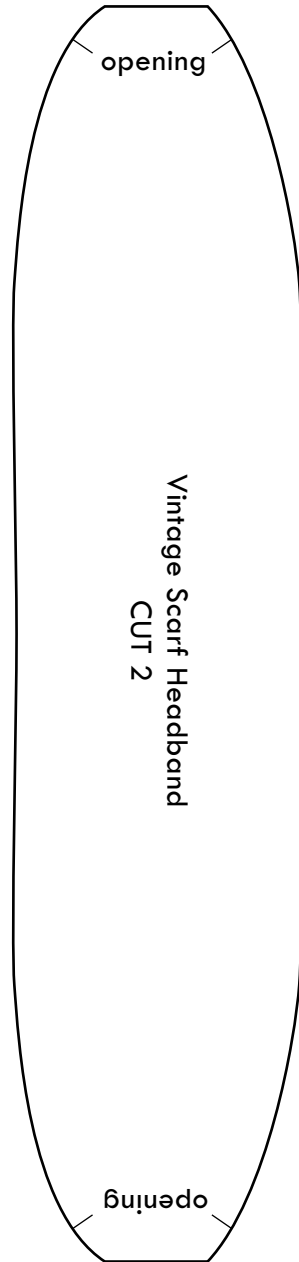
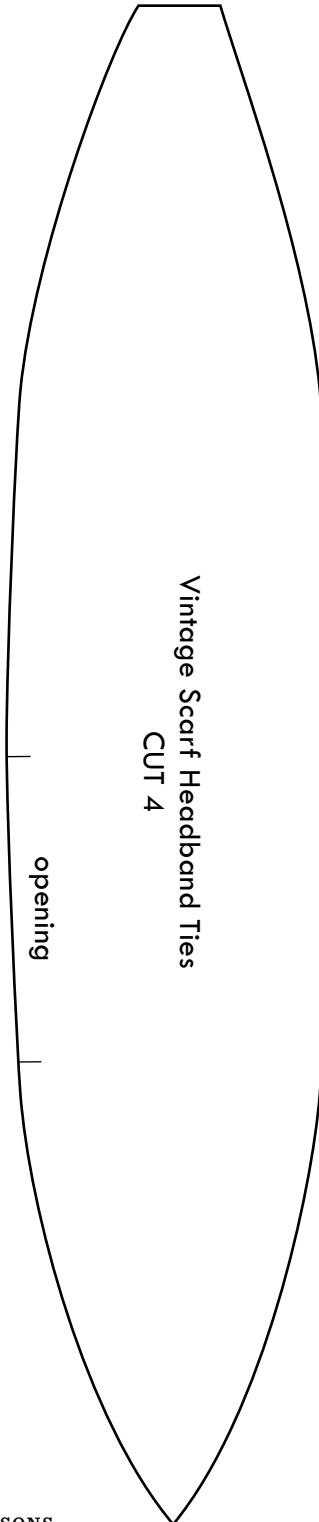
To print patterns on 8 ½-x-11-inch/A4 paper from your home computer, please follow the following “tiling” instructions. Tiling will allow you to split the large pattern page seen on screen across multiple 8 ½-x-11-inch pages, which you can then assemble into the large pattern page to use for your project. Alternatively, you can make use of a large-format printer at your local copy center.

For best printing results, print from Adobe Reader version X or higher. (Tiling options are not available on version 9 or lower.)

1. Open PDF and resave PDF onto your computer.
2. Open resaved PDF and choose Print.
3. Under Paper Size and Handling menu, choose Poster.
4. Select Cut Marks and Tile only large pages and Labels options.
5. Press OK to print.
6. Use the cut marks to line up the pages and tape together to assemble into large pattern page.

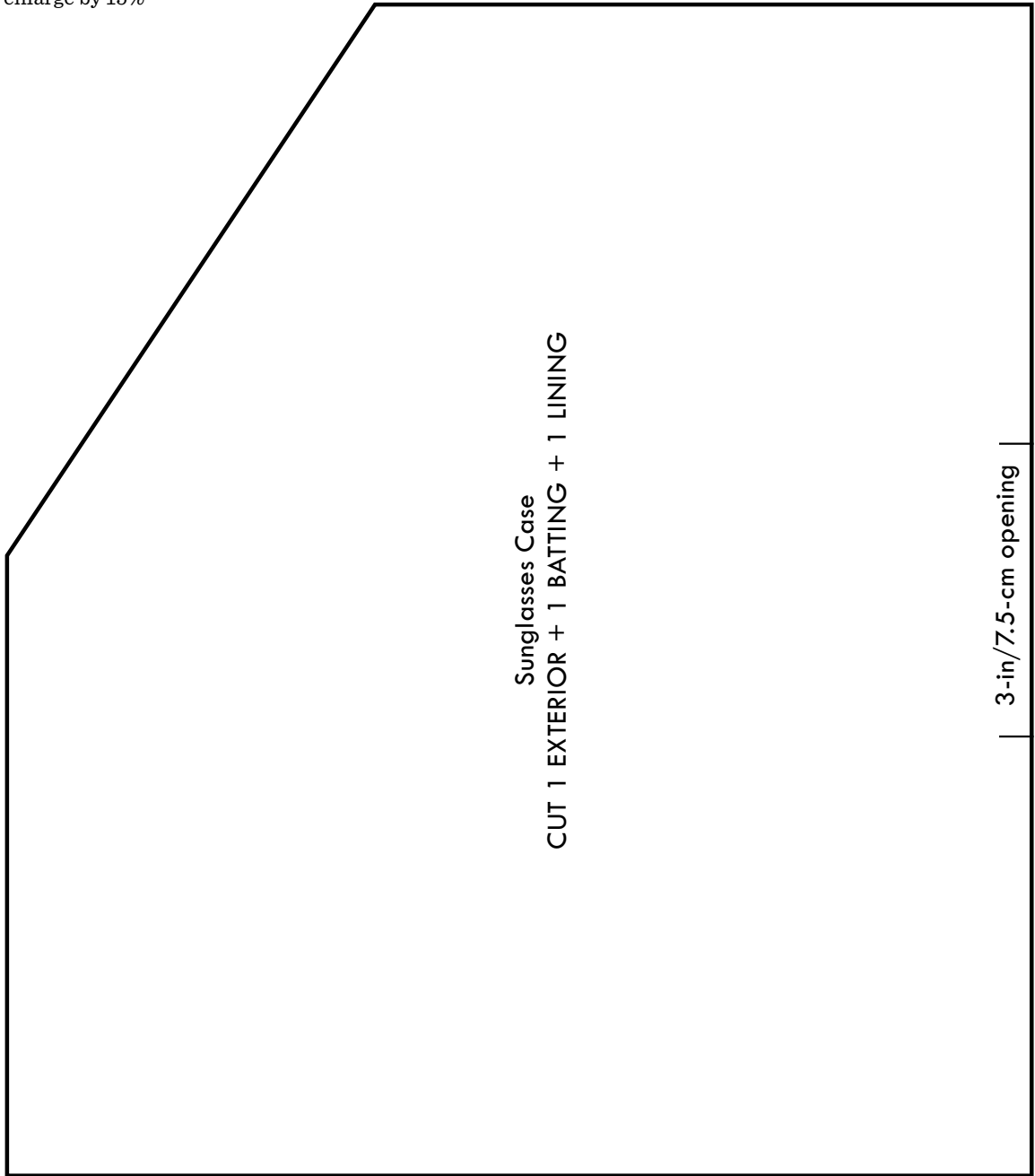
# PATTERNS

**VINTAGE SCARF  
HEADBAND**  
enlarge all by 50%



**SUNGLASSES CASE**

enlarge by 15%

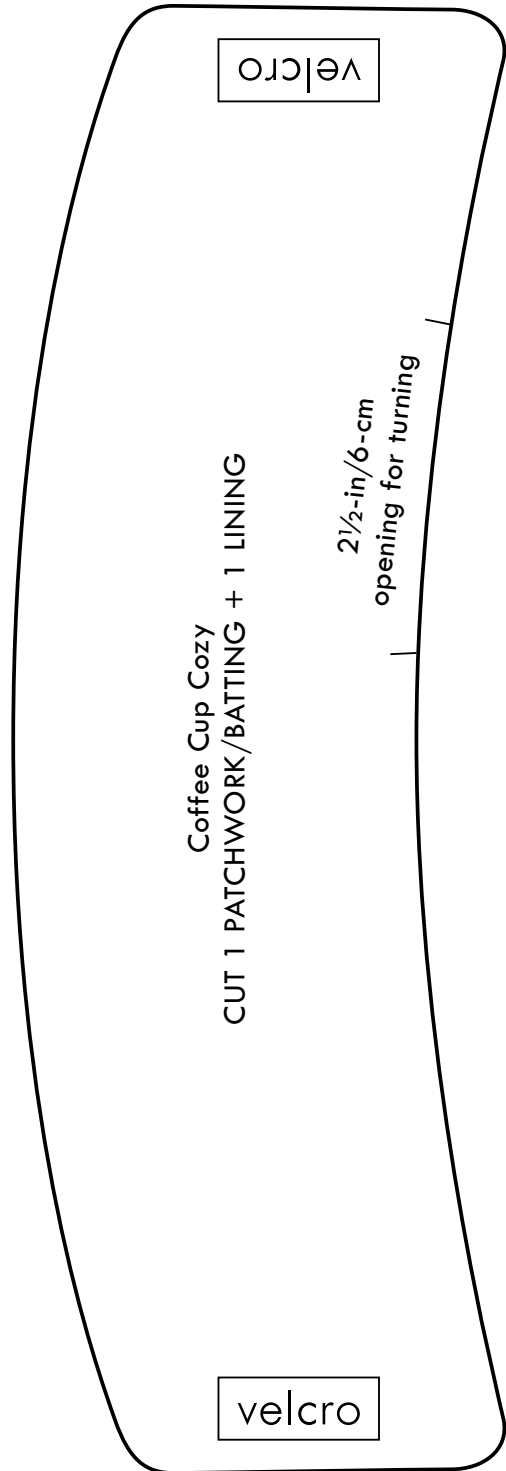
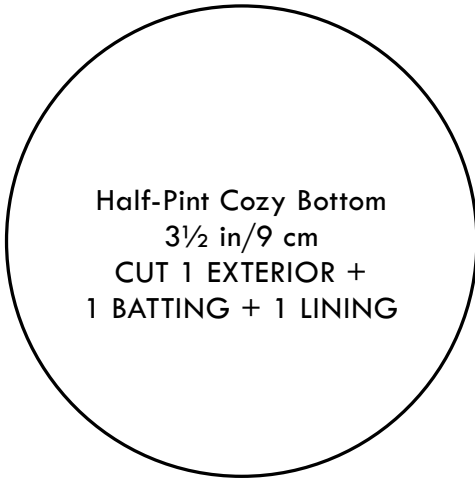


Sunglasses Case  
CUT 1 EXTERIOR + 1 BATTING + 1 LINING

3-in/7.5-cm opening

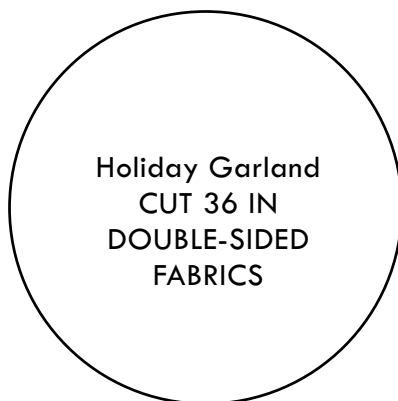
**COFFEE CUP COZY, MASON JAR  
& WINE BOTTLE COZIES**

enlarge all by 30%



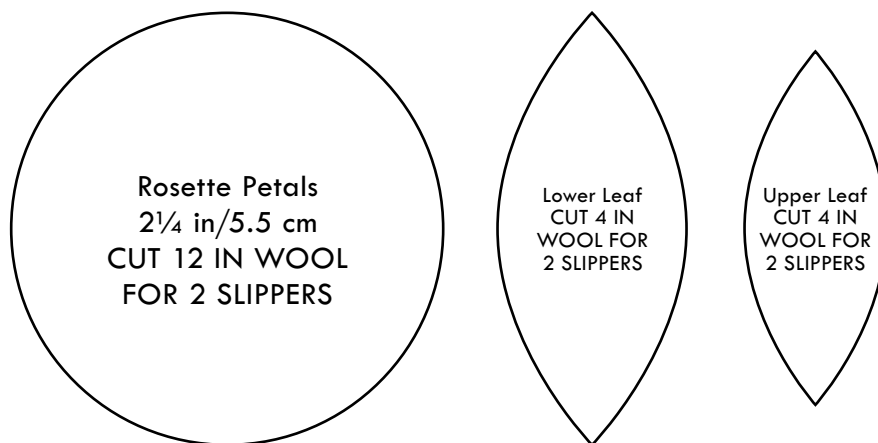
## HOLIDAY GARLAND

do not enlarge



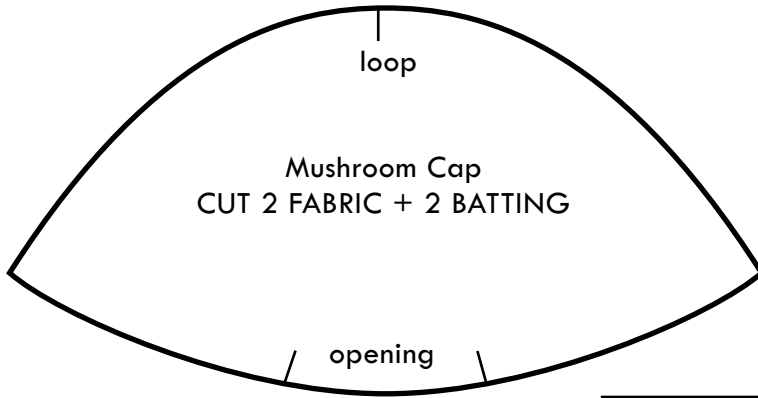
## COZY WOOL SLIPPERS

do not enlarge

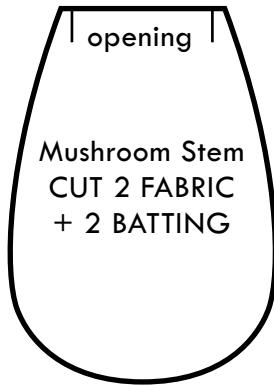


HOLIDAY ORNAMENTS

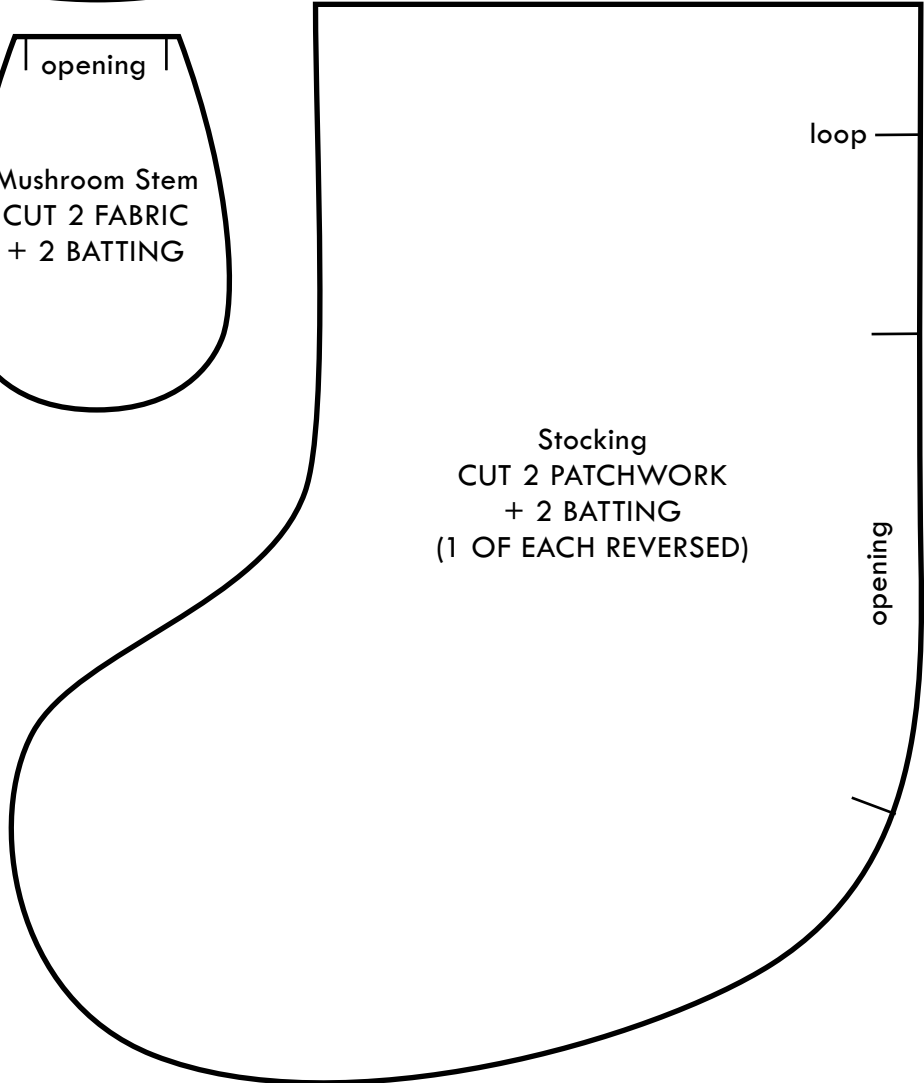
do not enlarge



Mushroom Cap  
CUT 2 FABRIC + 2 BATTING



Mushroom Stem  
CUT 2 FABRIC  
+ 2 BATTING



Stocking  
CUT 2 PATCHWORK  
+ 2 BATTING  
(1 OF EACH REVERSED)



## CUTE-AS-A-BUTTON HANDBAG

enlarge all by 70%

