



TILE B<sub>1</sub> TO B<sub>2</sub>

TILE B<sub>1</sub> TO B<sub>2</sub>

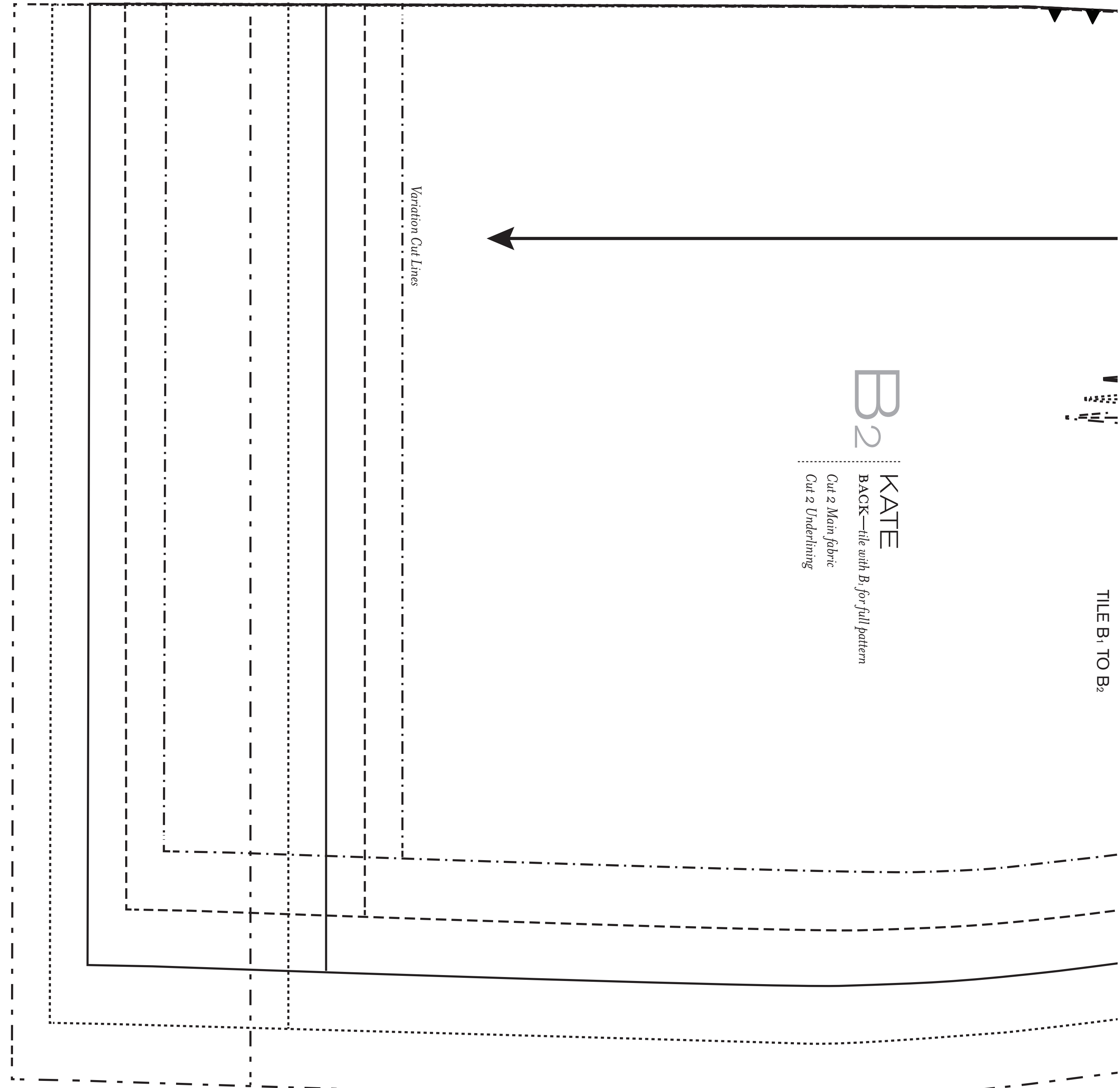
B<sub>2</sub>

KATE  
BACK—tile with B<sub>1</sub> for full pattern

Cut 2 Main fabric  
Cut 2 Underlining



Variation Cut Lines



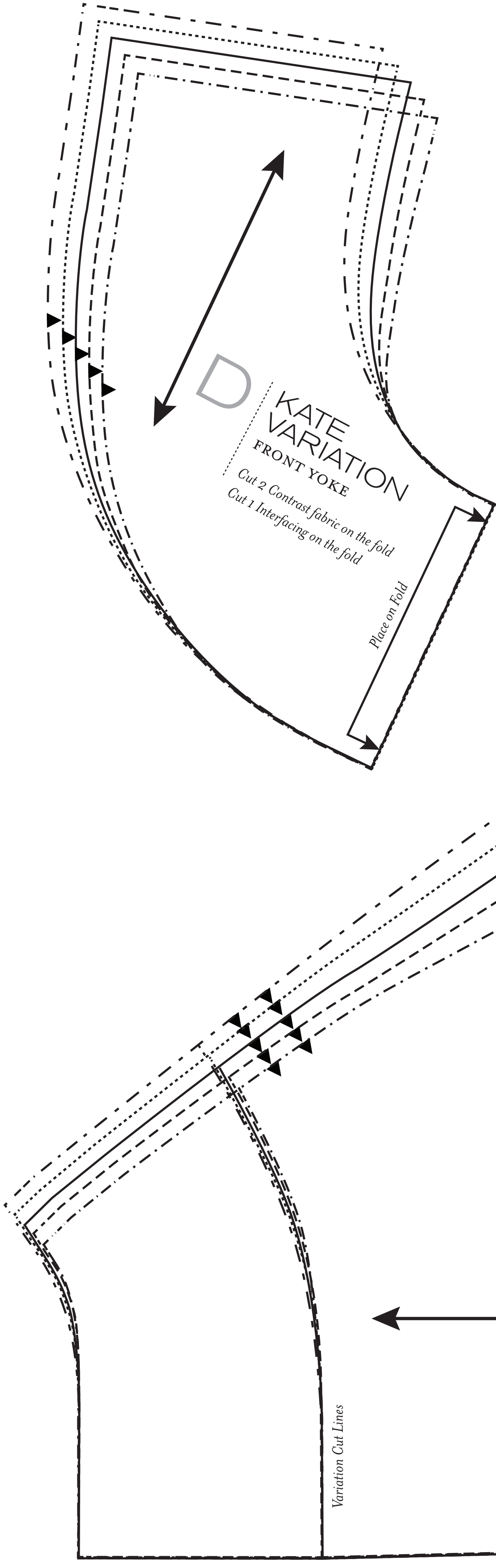
B<sub>1</sub>

KATE  
BACK—tile with B<sub>2</sub> for full pattern

Cut 2 Main fabric  
Cut 2 Underlining



Variation Cut Lines



D  
KATE VARIATION  
FRONT YOKE

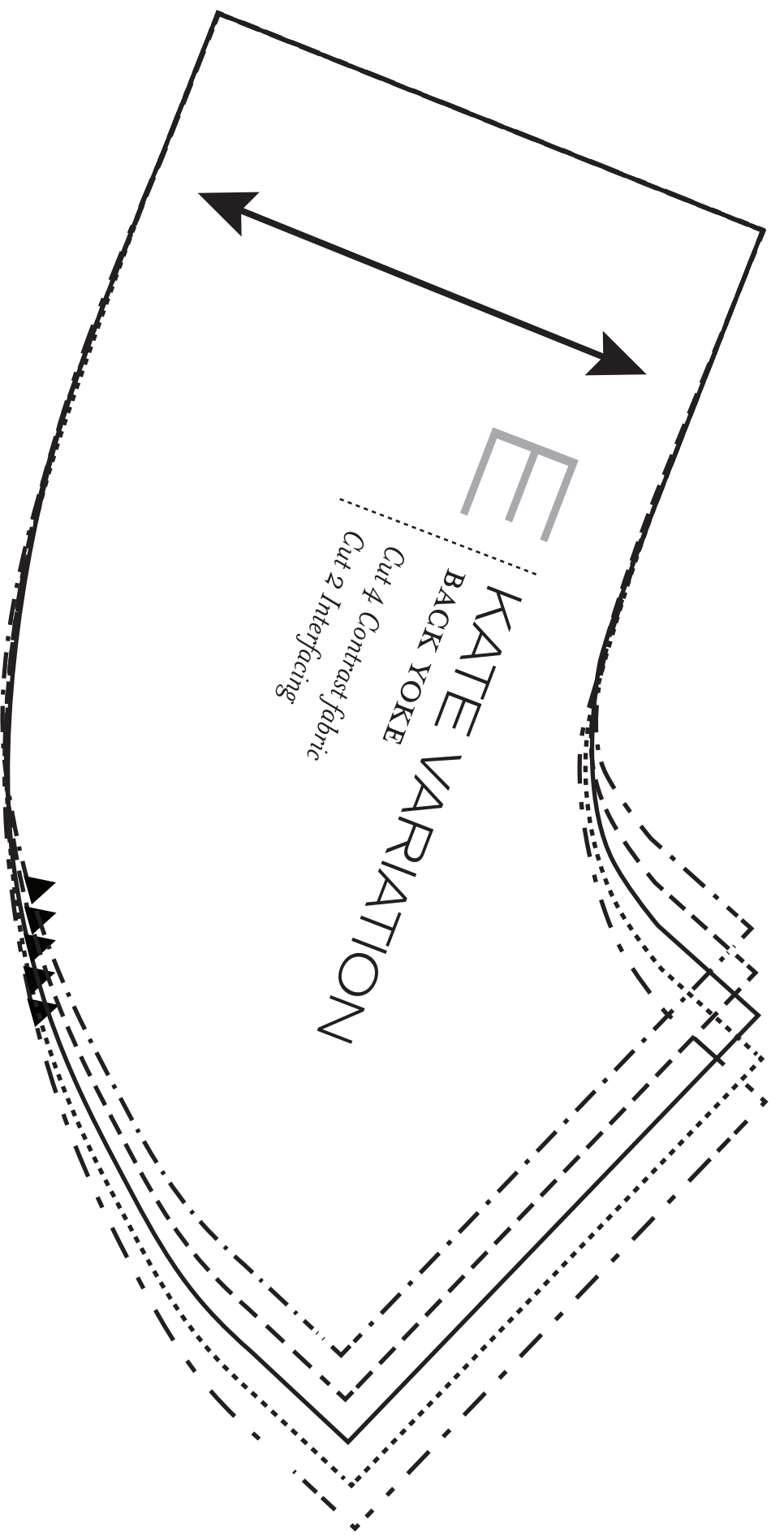
Cut 2 Contrast fabric on the fold  
Cut 1 Interfacing on the fold

Place on Fold

E

KATE VARIATION  
BACK YOKE

Cut 4 Contrast fabric  
Cut 2 Interfacing



TILE A1 TO A2

Place on Fold

**KATE**  
FRONT—tile with A1 for full pattern  
Cut 1 Main fabric on the fold  
Cut 1 Underlining on the fold

A2

TILE A1 TO A2

A1

**KATE**  
FRONT—tile with A2 for full pattern  
Cut 1 Main fabric on the fold  
Cut 1 Underlining on the fold

Variation Cut Lines

**C**  
**KATE**  
SLEEVE  
Cut 2 Main fabric

Variation Cut Lines

