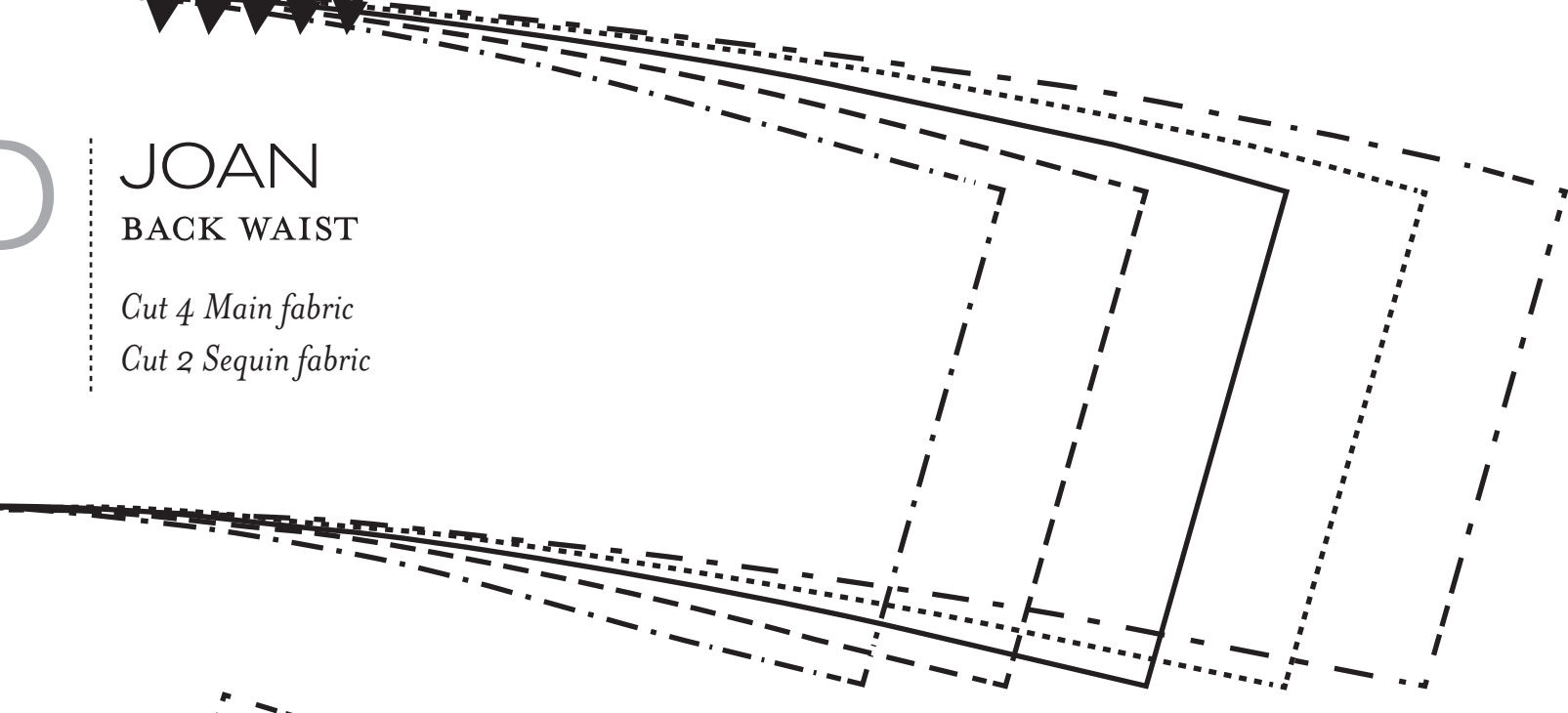


D

JOAN  
BACK WAIST

Cut 4 Main fabric  
Cut 2 Sequin fabric



JOAN  
BACK BODICE

Cut 2 Main fabric

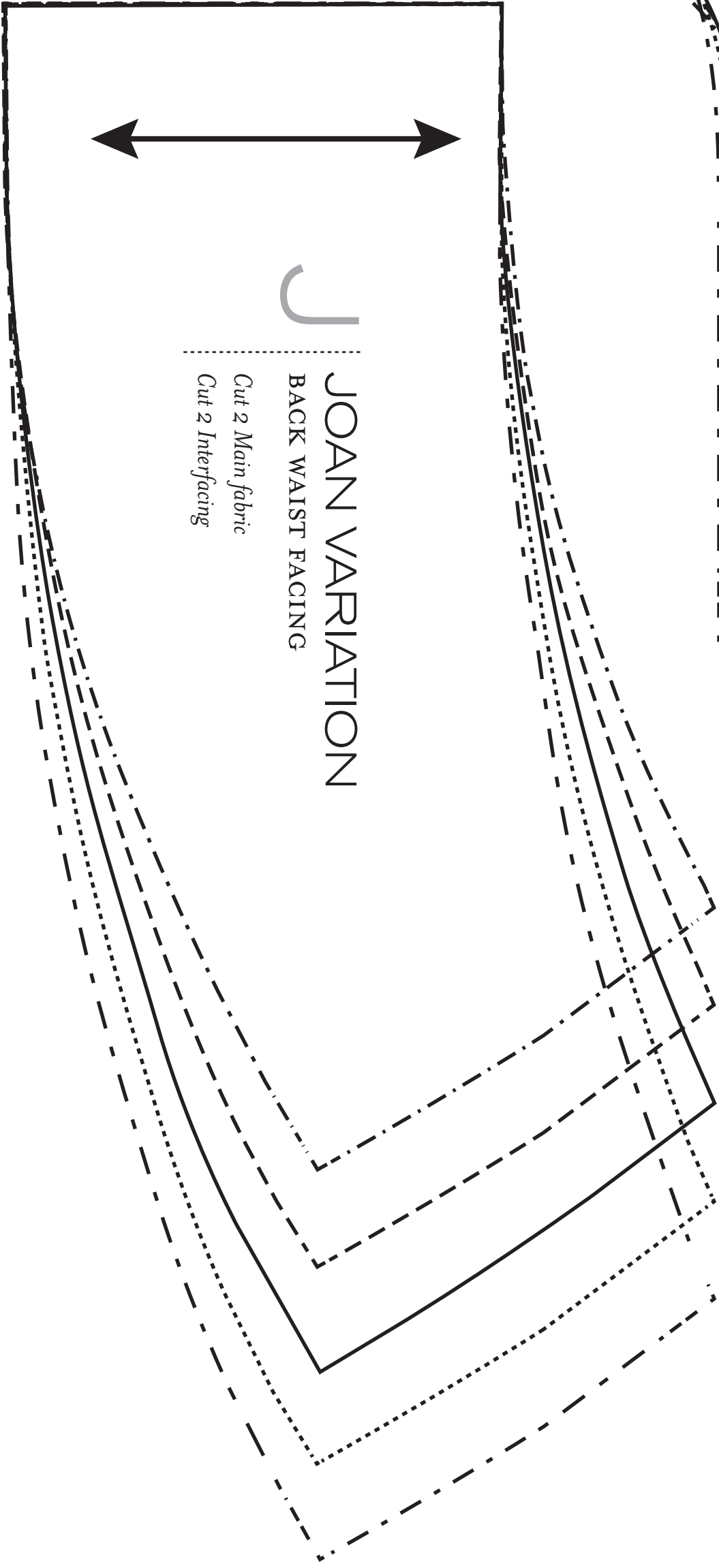
B



J

JOAN VARIATION  
BACK WAIST FACING

Cut 2 Main fabric  
Cut 2 Interfacing



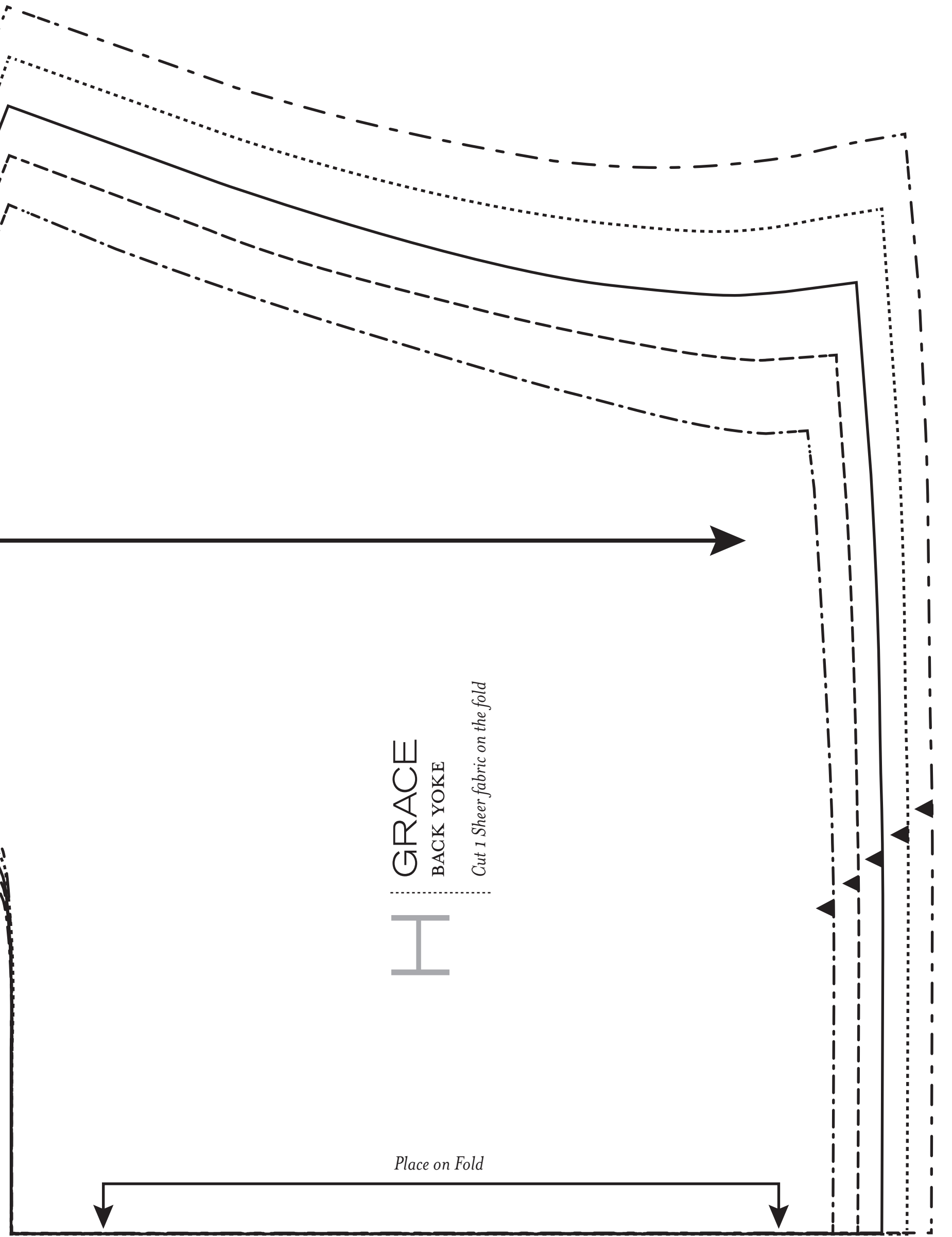
GRACE  
BACK YOKE

Cut 1 Sheer fabric on the fold

H



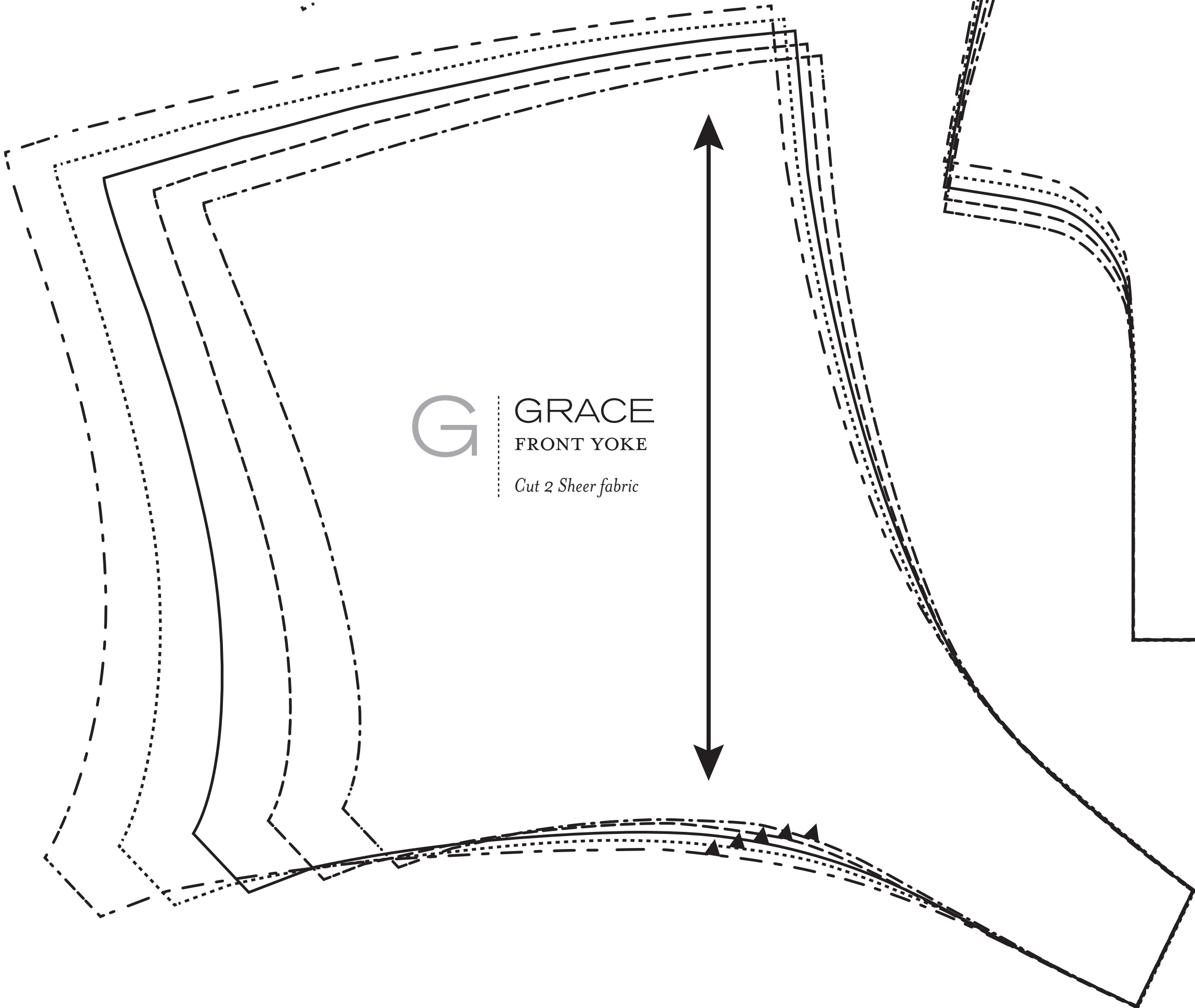
Place on Fold

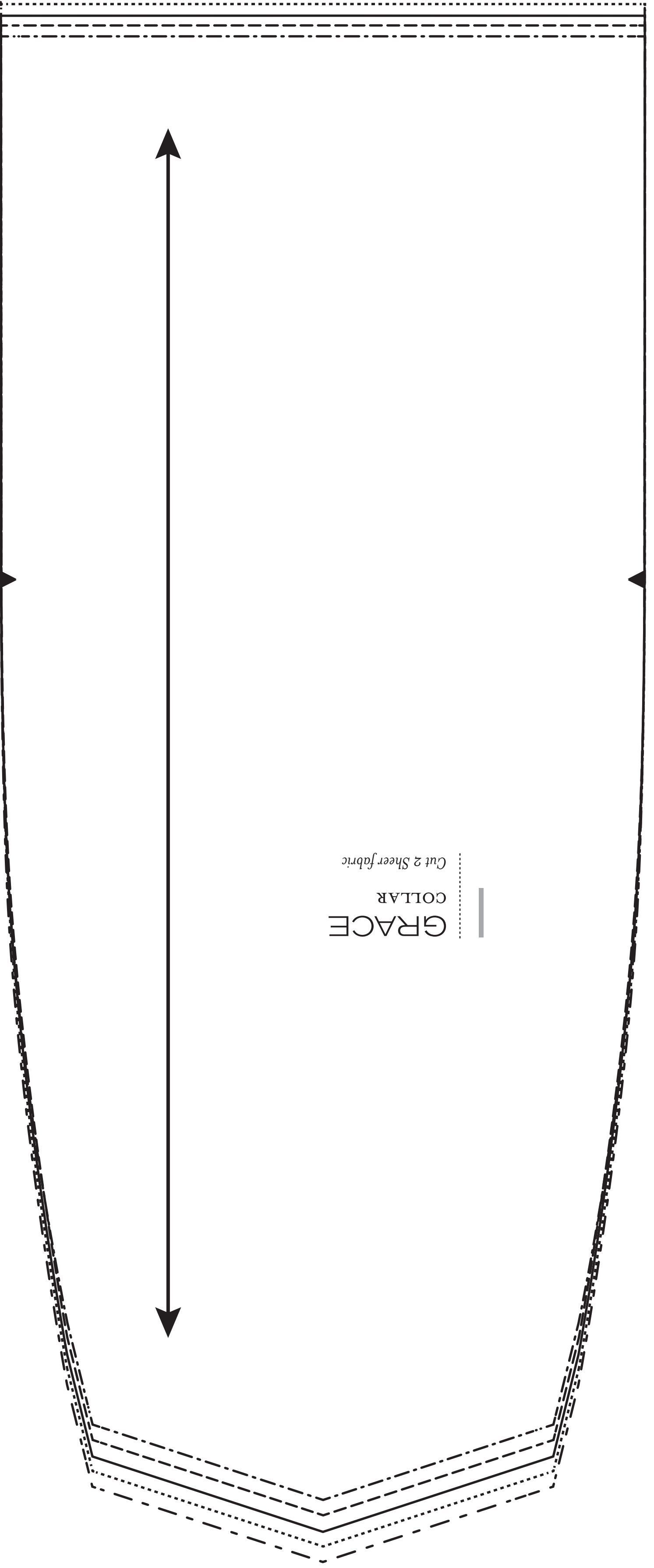
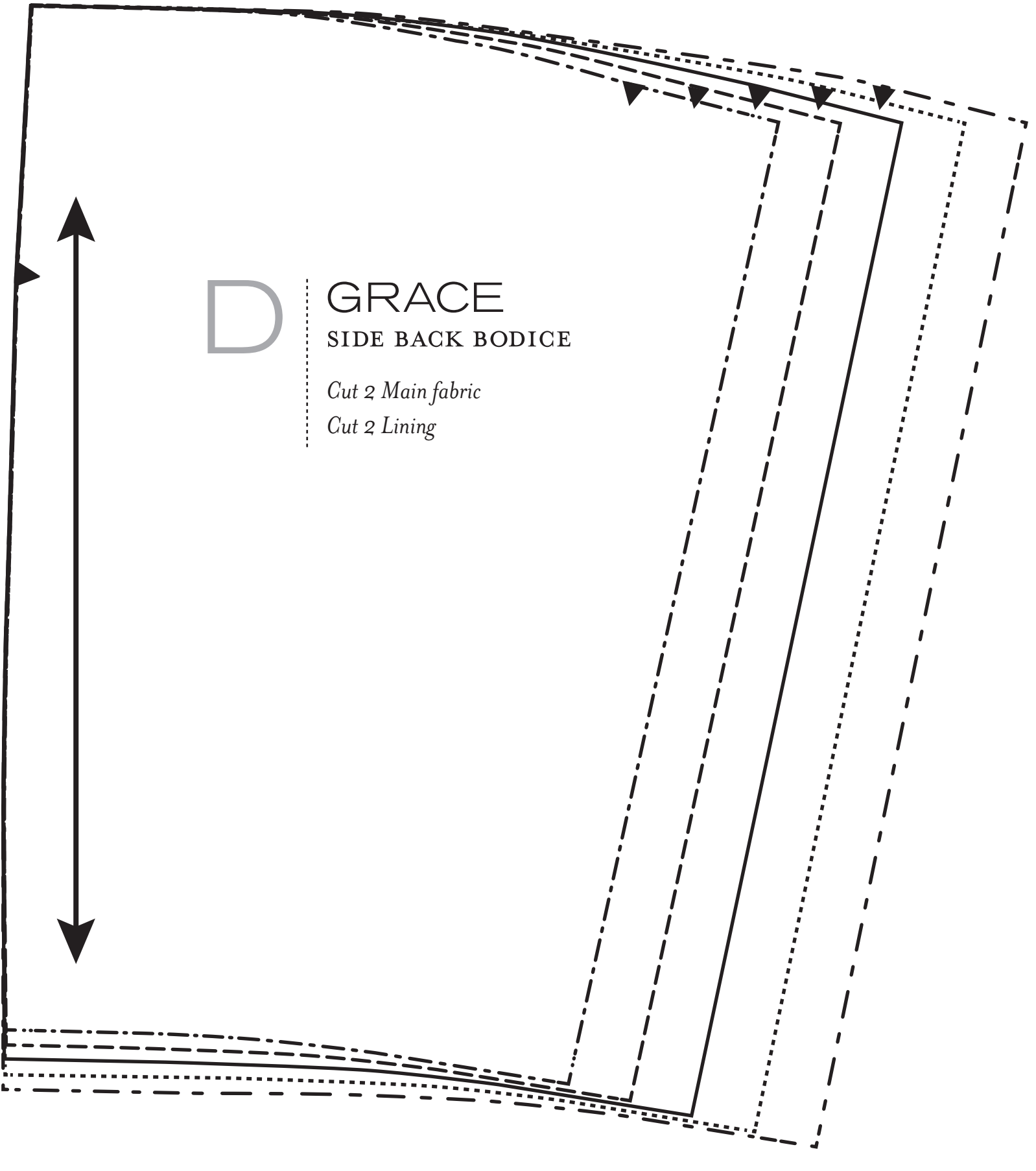
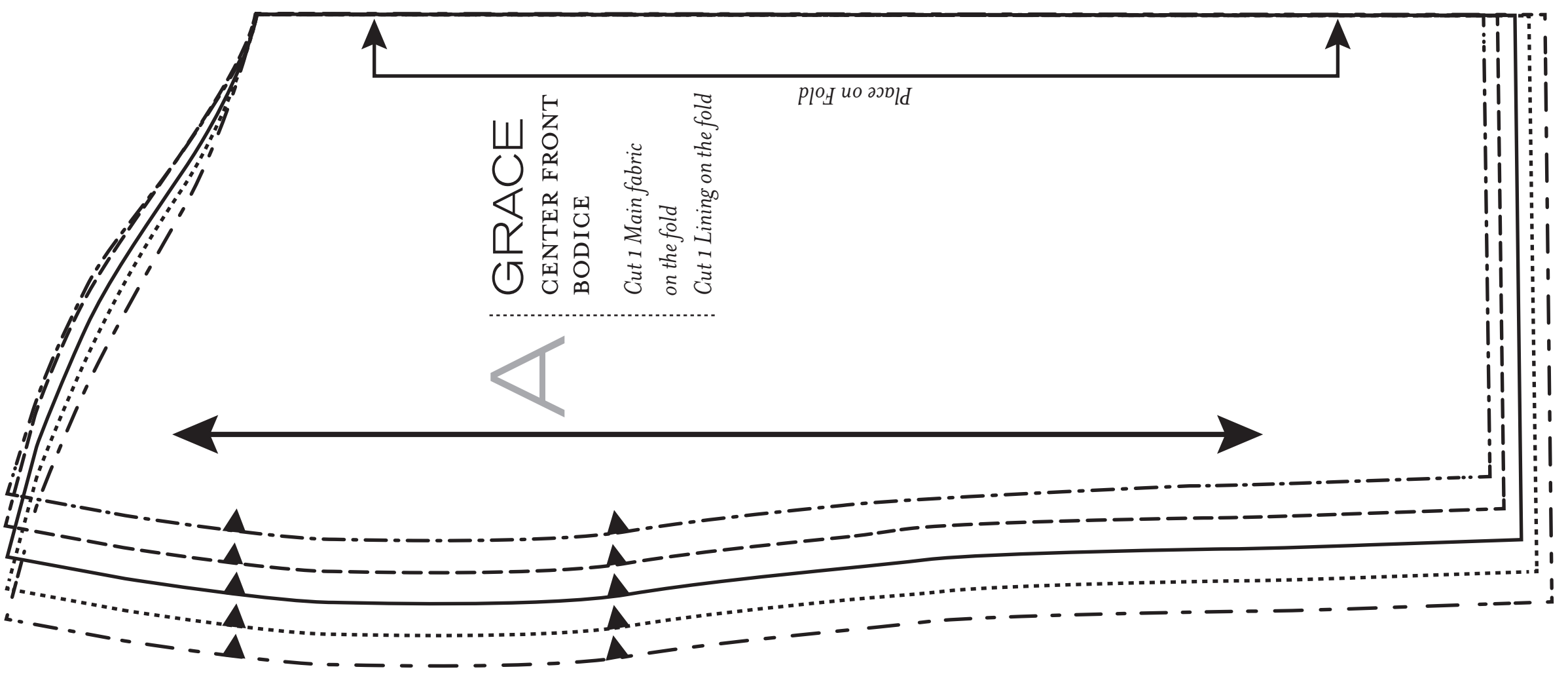
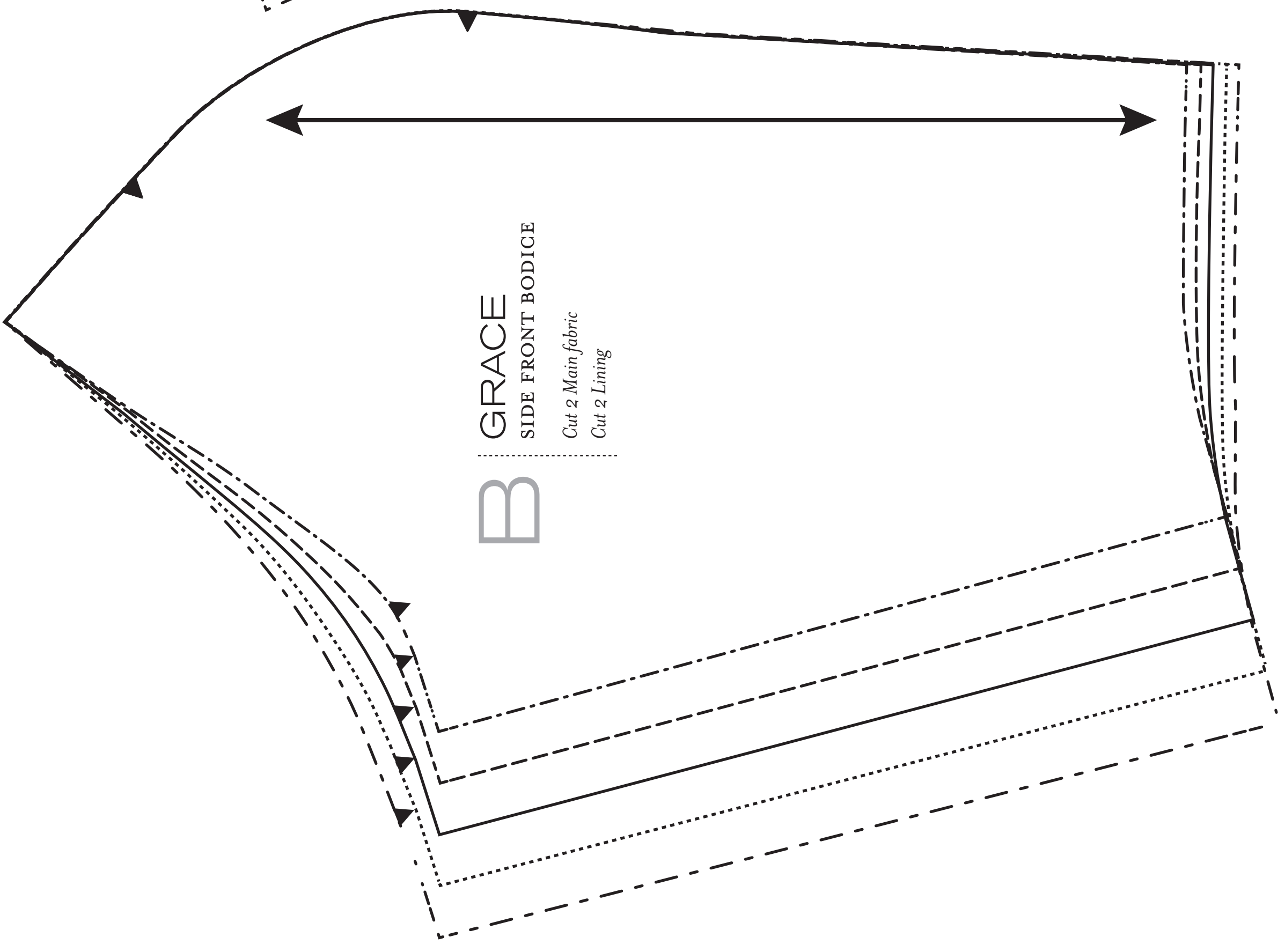
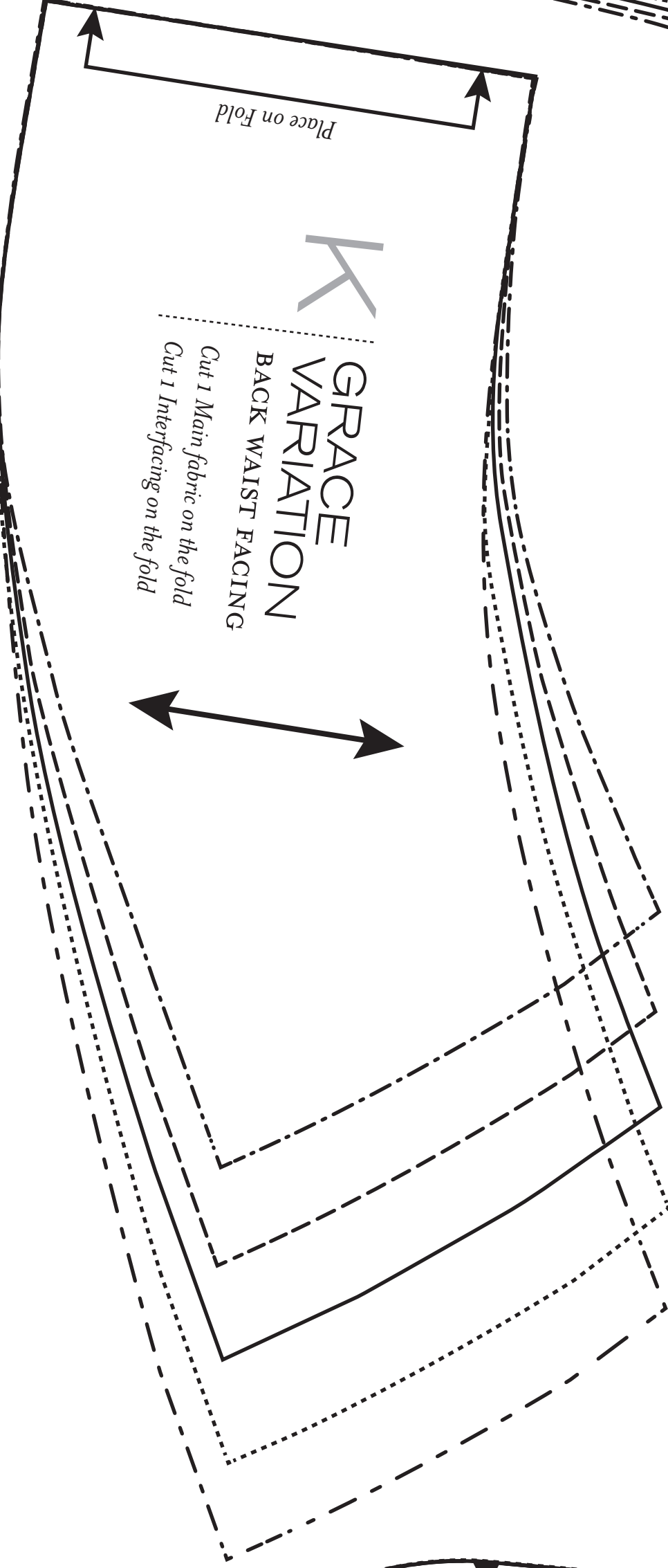
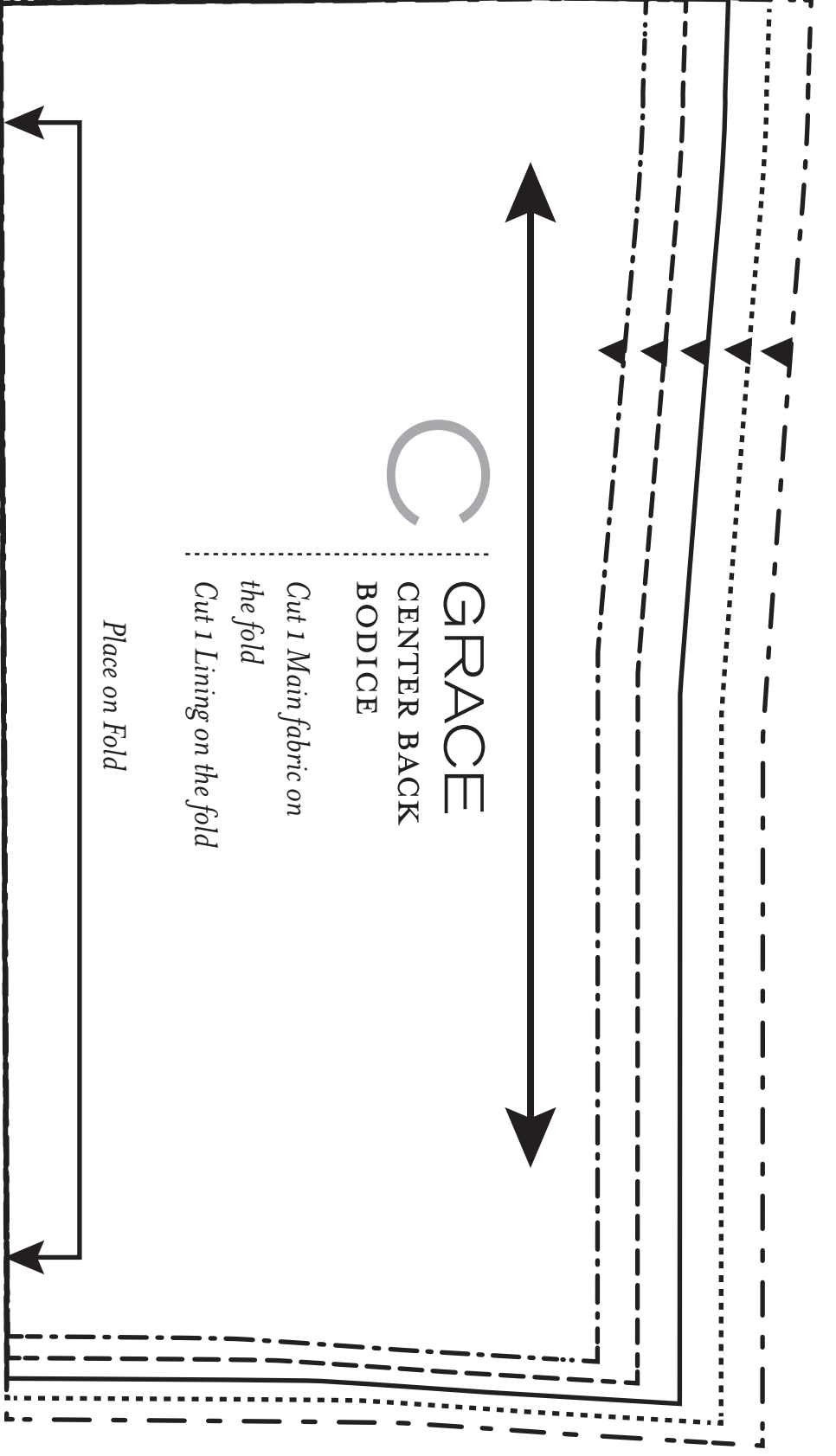
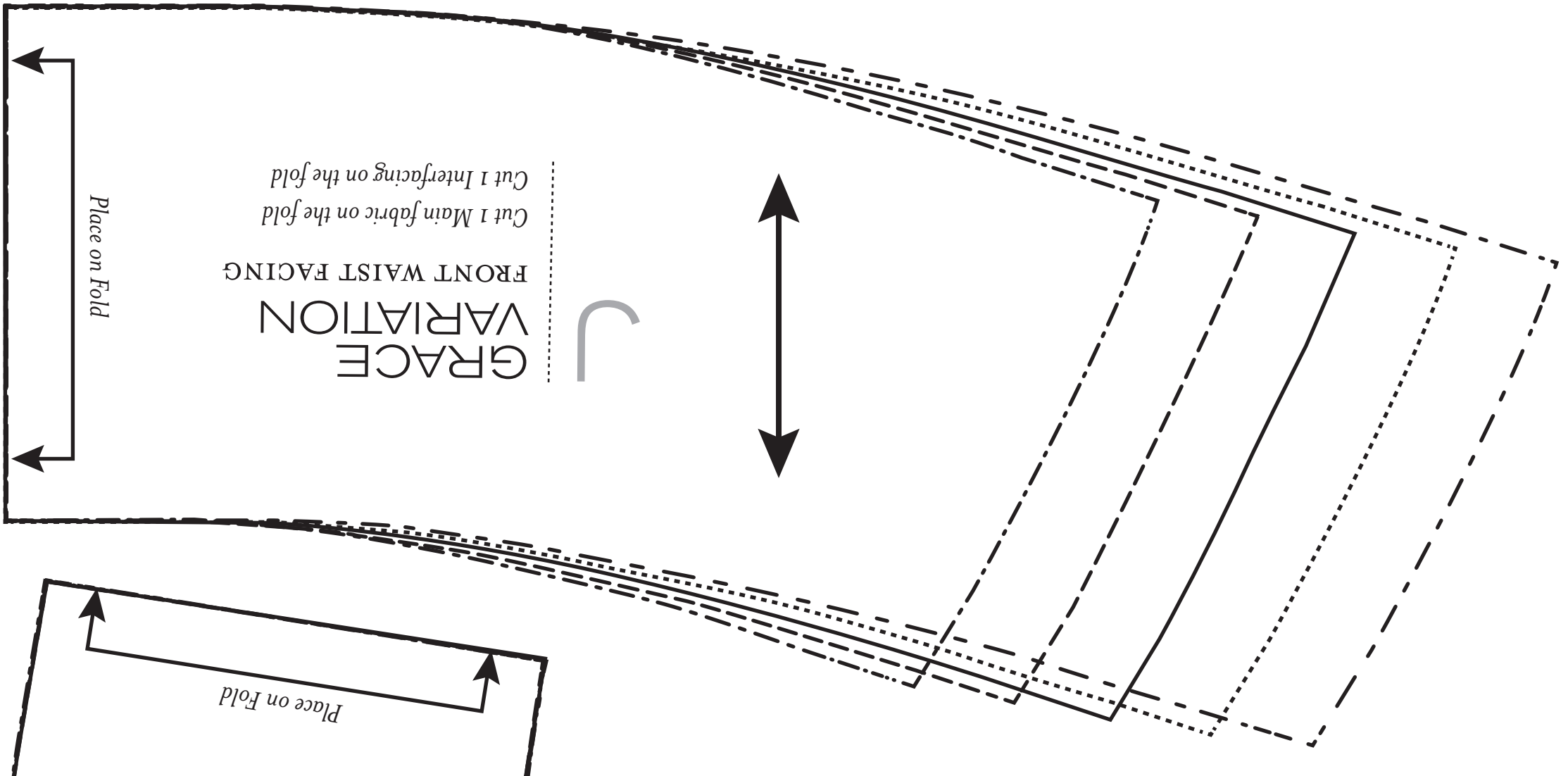


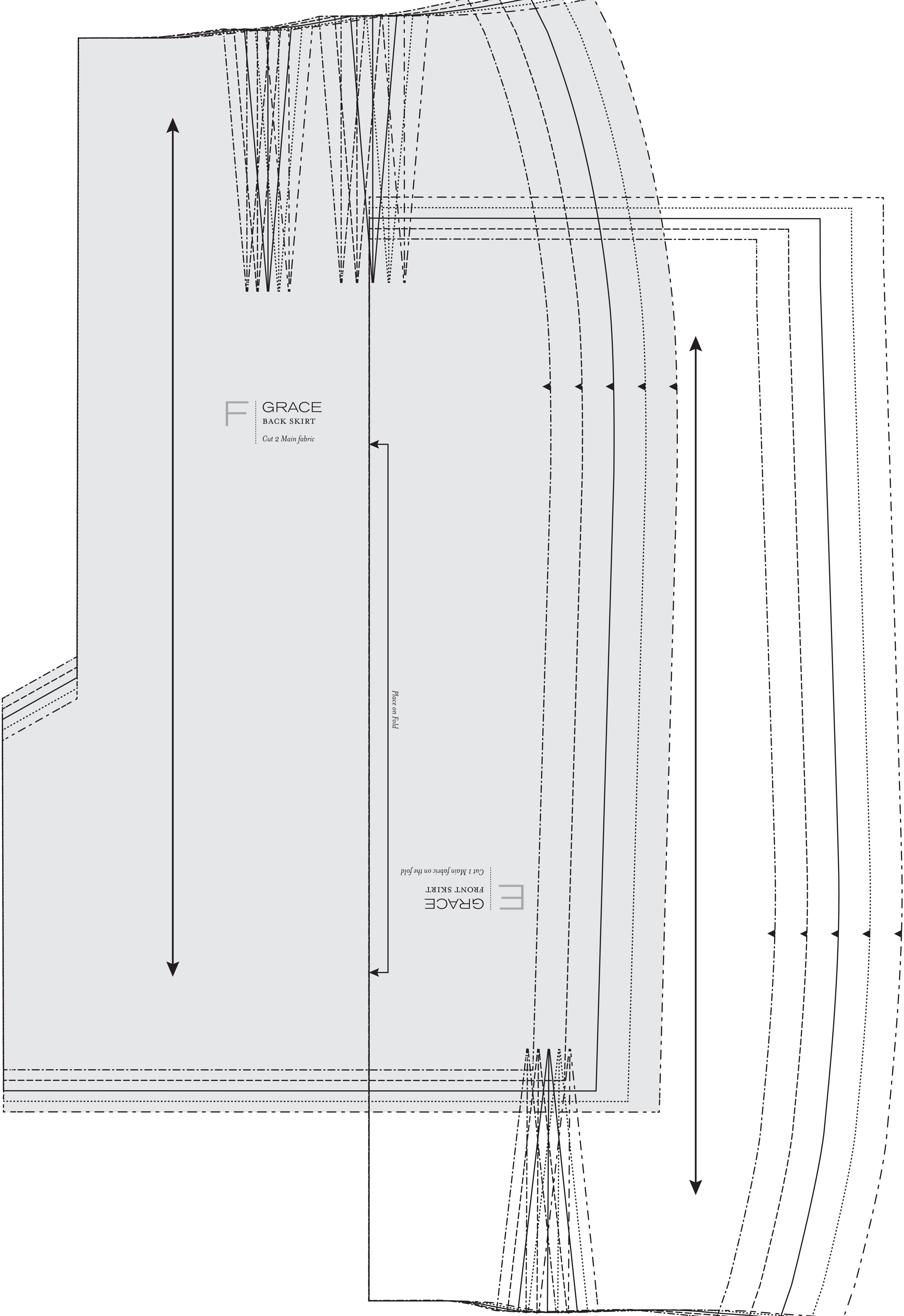
G

GRACE  
FRONT YOKE

Cut 2 Sheer fabric







**F** GRACE  
BACK SKIRT  
*Cut 2 Main fabric*

*Place on Fold*

**E** GRACE  
FRONT SKIRT  
*Cut 1 Main fabric on the fold*