

**B<sub>1</sub>** DIANA  
BACK  
Cut 2 Main fabric  
Cut 2 Lining

**A<sub>1</sub>** DIANA  
FRONT  
Cut 1 Main fabric on the fold  
Cut 1 Lining on the fold

**A<sub>2</sub>** DIANA  
FRONT  
Cut 1 Main fabric on the fold  
Cut 1 Lining on the fold

**B<sub>2</sub>** DIANA  
BACK  
Cut 2 Main fabric  
Cut 2 Lining

TILE B<sub>1</sub> TO B<sub>2</sub>

TILE A<sub>1</sub> TO A<sub>2</sub>

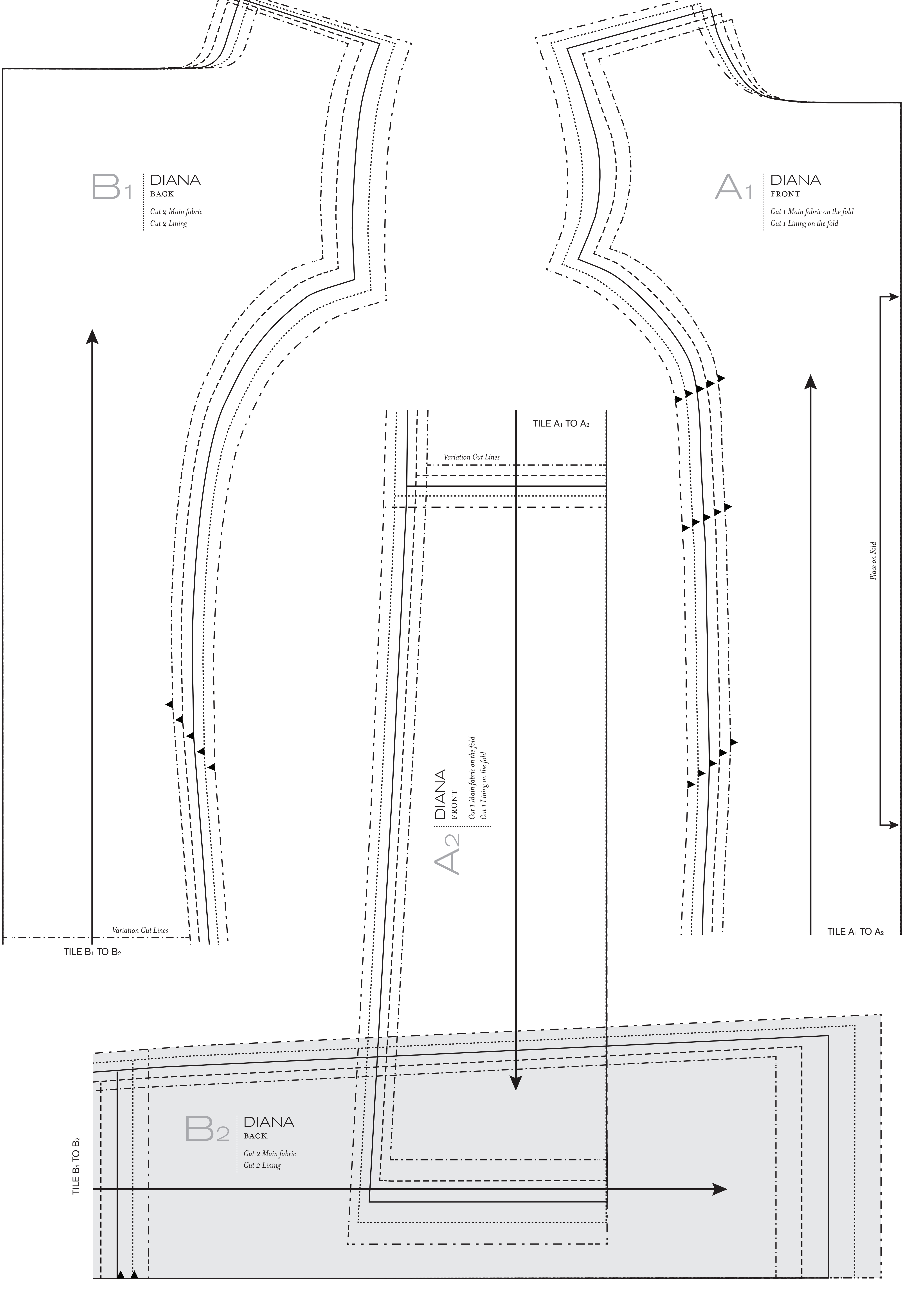
TILE A<sub>1</sub> TO A<sub>2</sub>

TILE B<sub>1</sub> TO B<sub>2</sub>

Variation Cut Lines

Variation Cut Lines

Place on Fold



TILE C<sub>1</sub> TO C<sub>2</sub>

C<sub>1</sub>  
DIANA  
SIDE FRONT  
Cut 2 Main fabric  
Cut 2 Lining

Variation Cut Lines

TILE C<sub>1</sub> TO C<sub>2</sub>

C<sub>2</sub>  
DIANA  
SIDE FRONT  
Cut 2 Main fabric  
Cut 2 Lining

D<sub>1</sub>  
DIANA  
SIDE BACK  
Cut 2 Main fabric  
Cut 2 Lining

Variation Cut Lines

D<sub>2</sub>  
DIANA  
SIDE BACK  
Cut 2 Main fabric  
Cut 2 Lining

TILE D<sub>1</sub> TO D<sub>2</sub>

TILE D<sub>1</sub> TO D<sub>2</sub>

