

Place on Fold

Variation Grainline

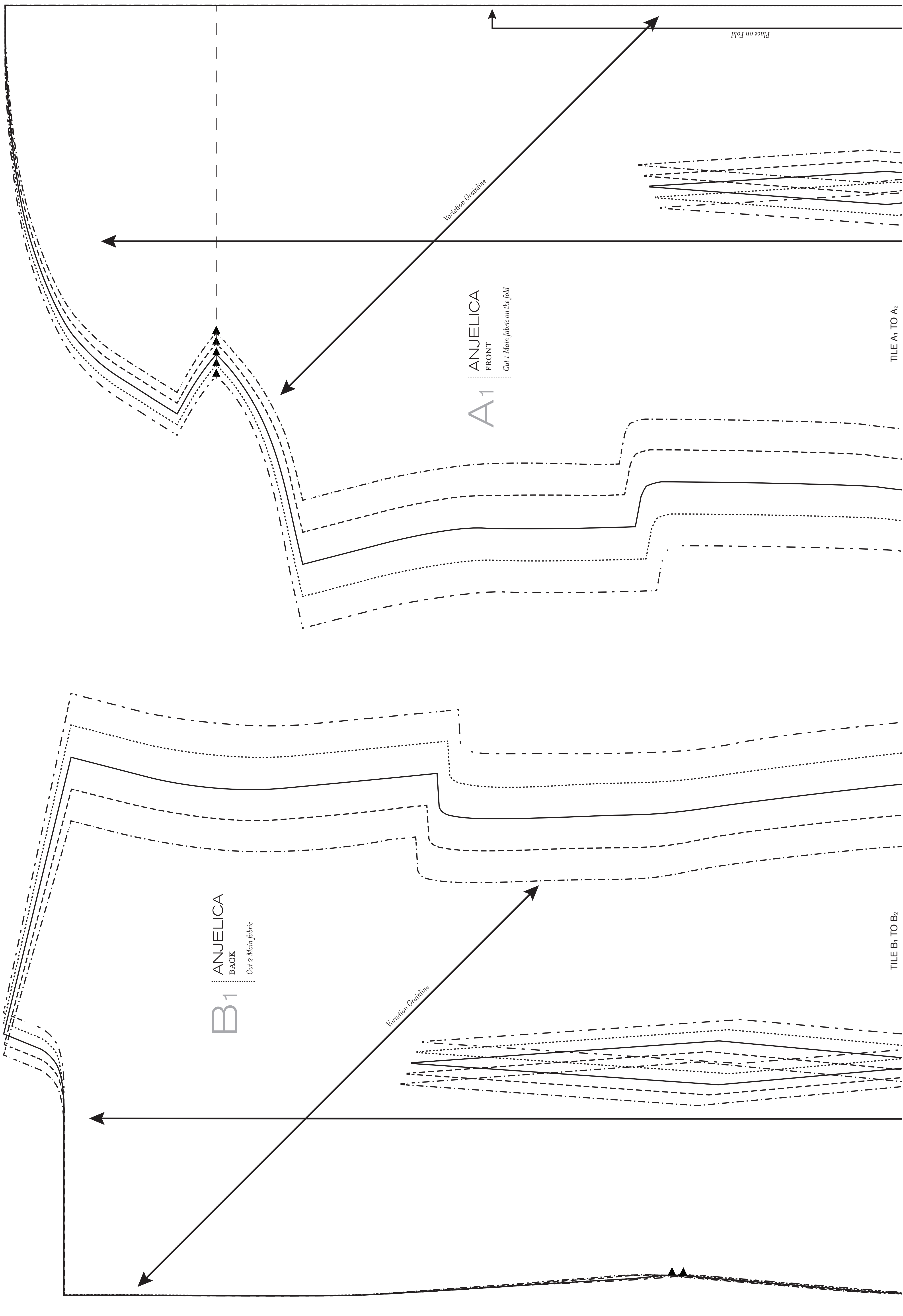
ANJELICA
FRONT
Cut 1 Main fabric on the fold
A1

TILE A1 TO A2

ANJELICA
BACK
Cut 2 Main fabric
B1

Variation Grainline

TILE B1 TO B2



TILE A₁ TO A₂

Darts used only on variation.

A₂

ANJELICA
FRONT

Cut 1 Main fabric on the fold

C

ANJELICA
SLEEVE

Cut 2 Main fabric

Variation Cut Lines

Darts used only on variation.

TILE B₁ TO B₂

Variation Cut Lines

B₂
ANJELICA
BACK

Cut 2 Main fabric

