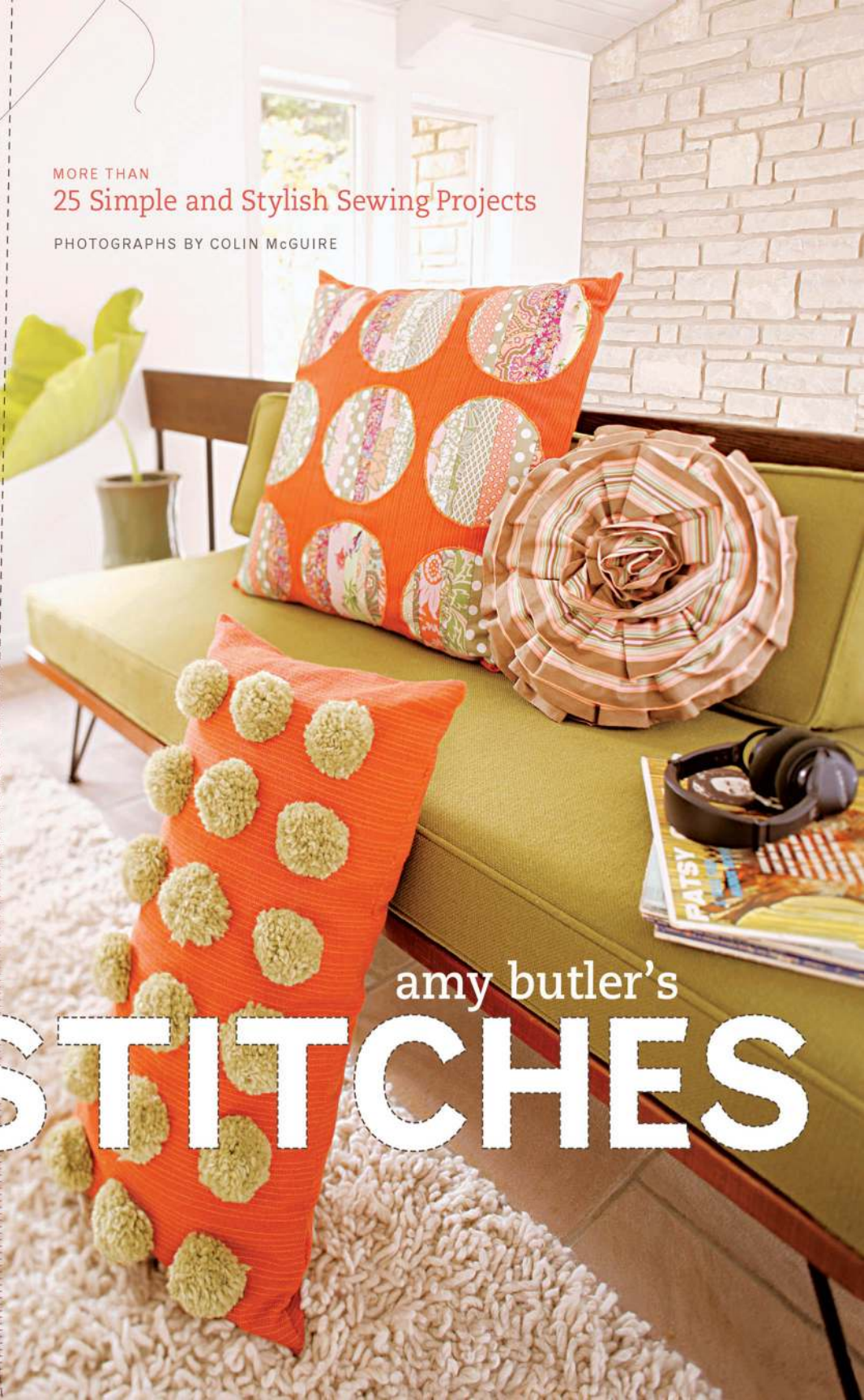




MORE THAN
25 Simple and Stylish Sewing Projects

PHOTOGRAPHS BY COLIN McGUIRE



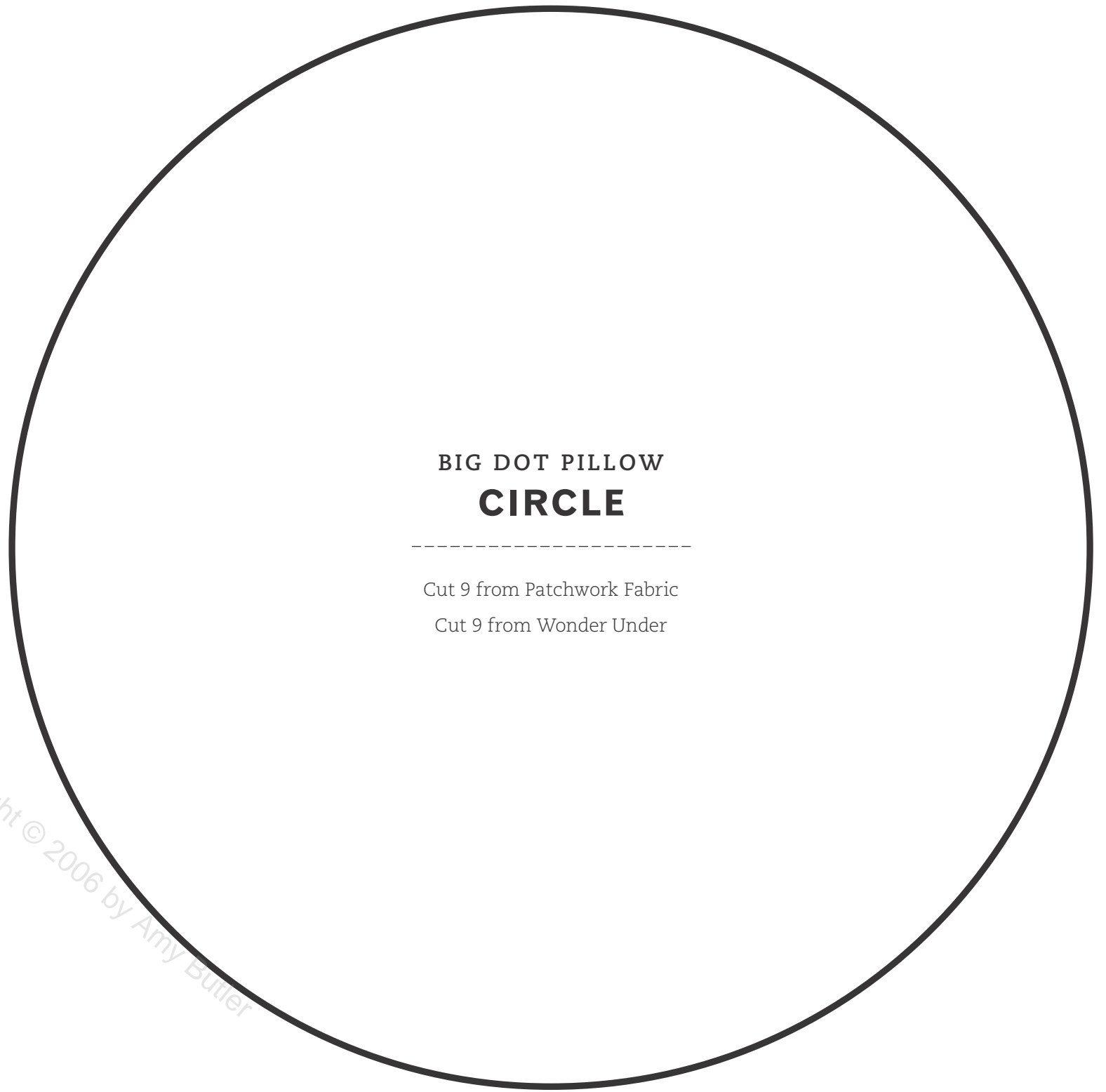
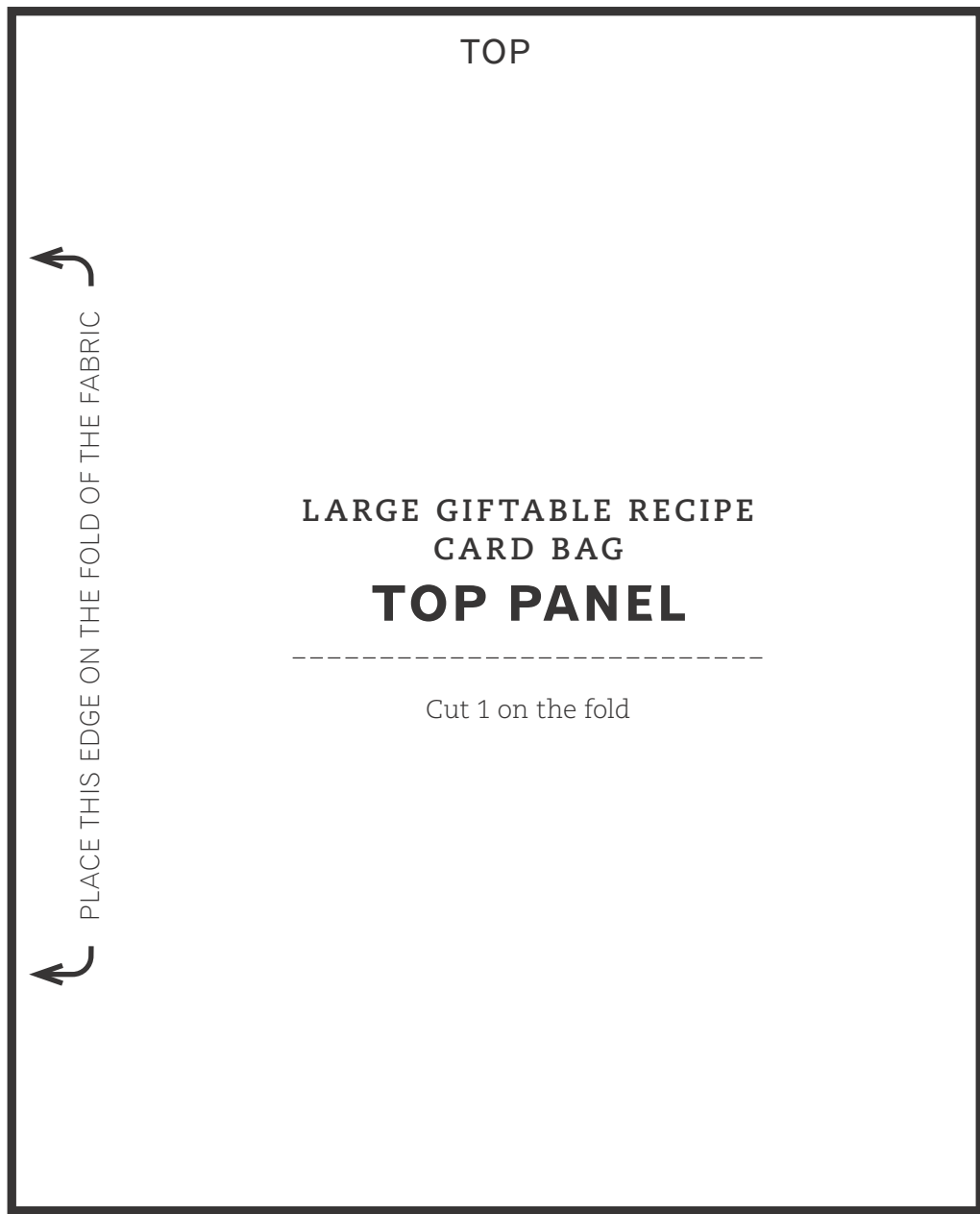
amy butler's

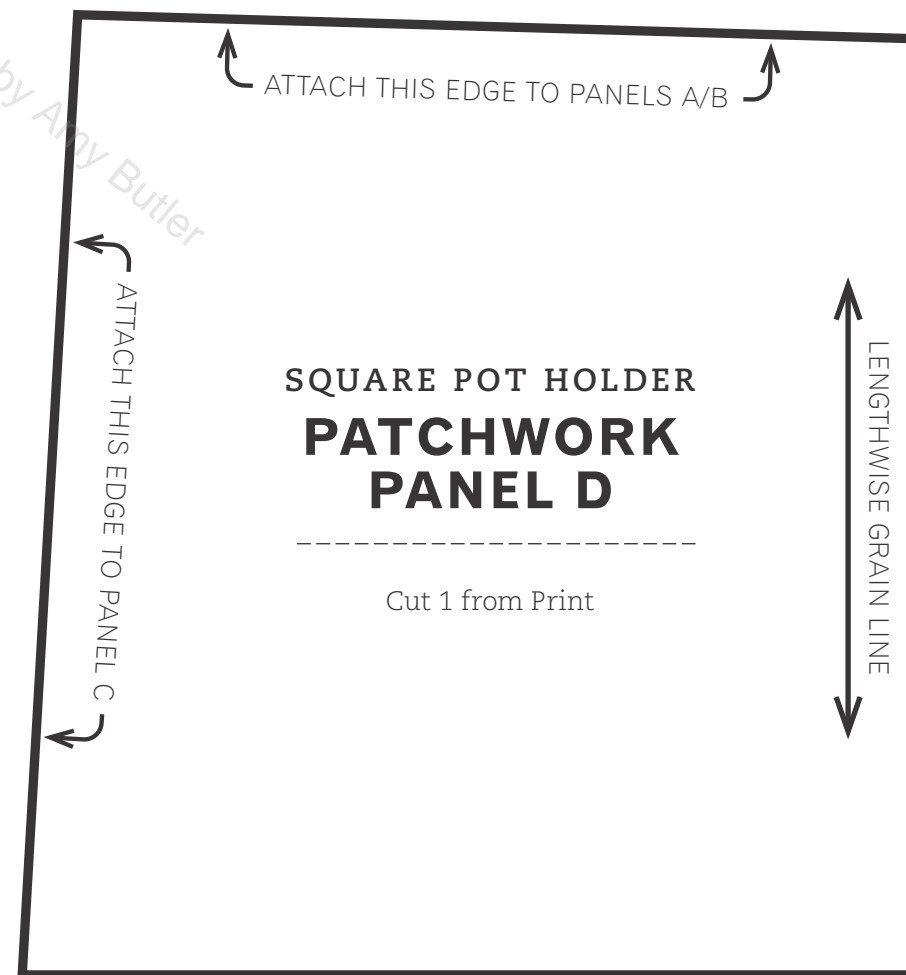
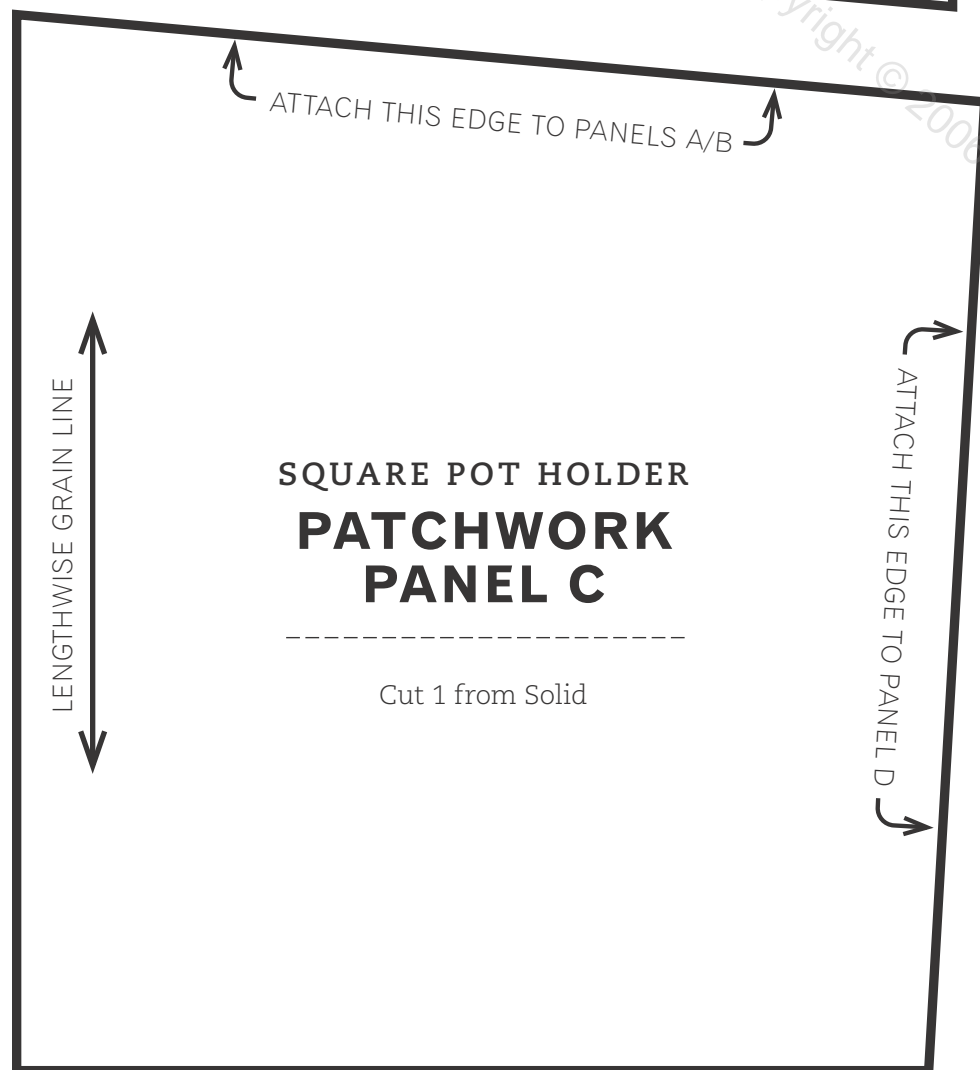
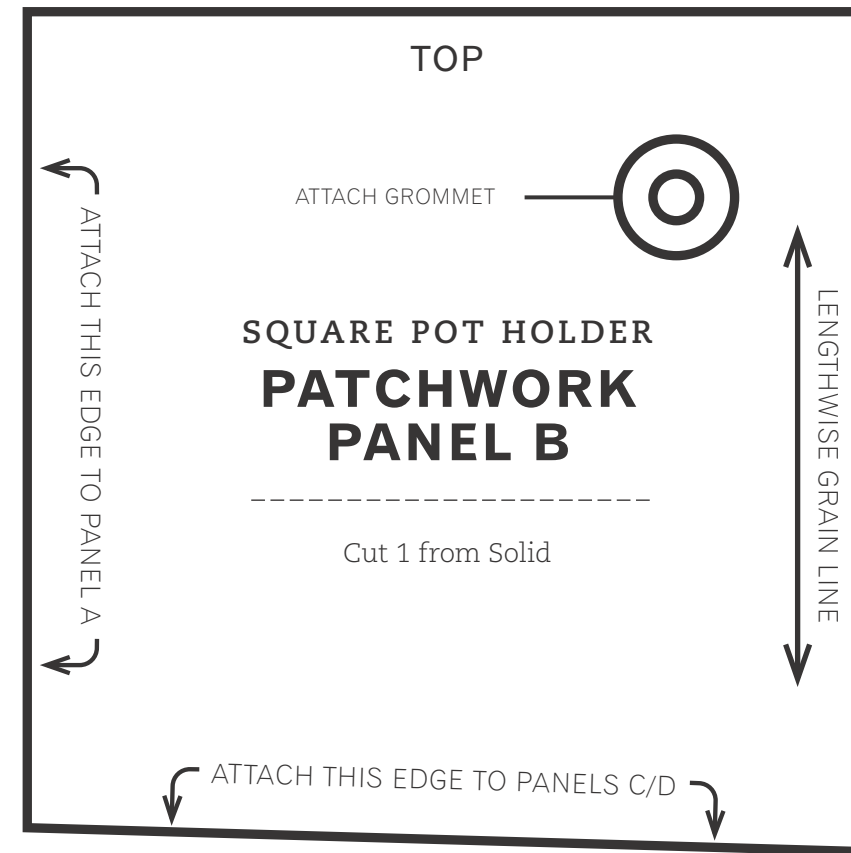
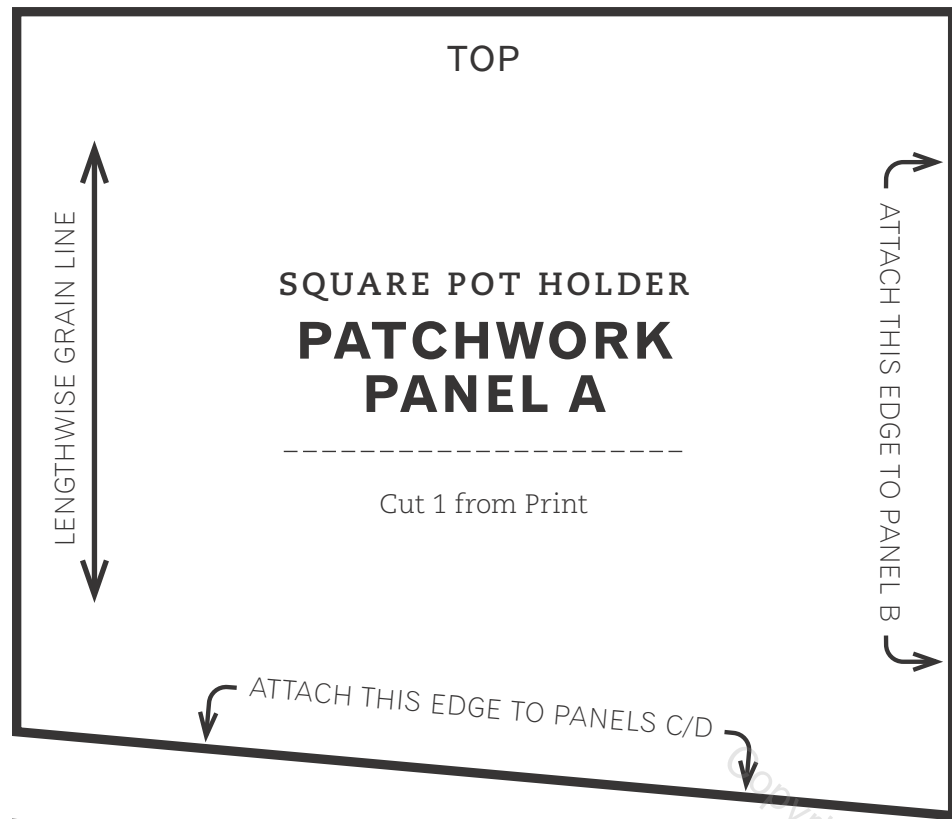
INSTITCHES

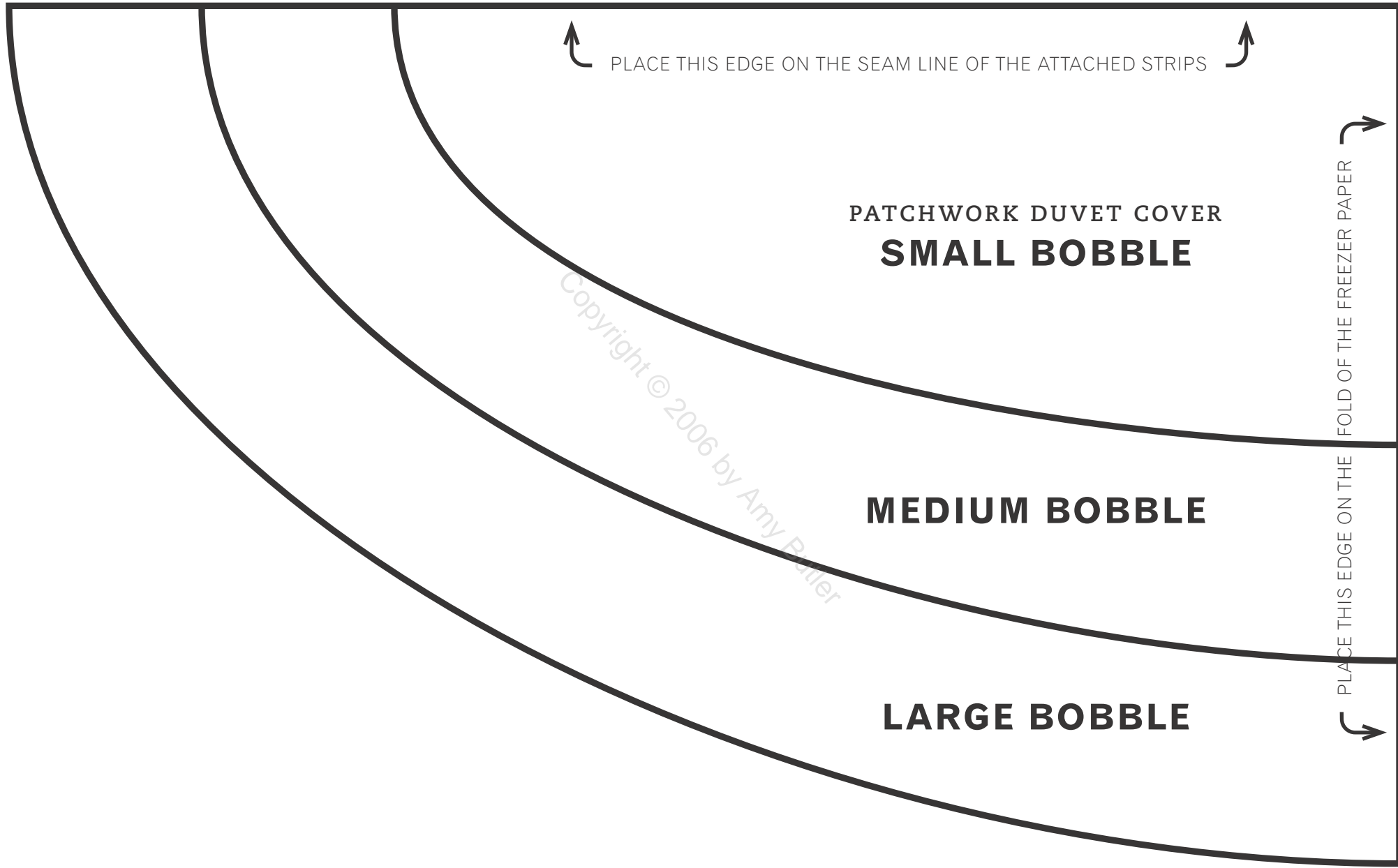
To print patterns on 8 ½-x-11-inch/A4 paper from your home computer, please follow the following “tiling” instructions. Tiling will allow you to split the large pattern page seen on screen across multiple 8 ½-x-11-inch pages, which you can then assemble into the large pattern page to use for your project. Alternatively, you can make use of a large-format printer at your local copy center.

For best printing results, print from Adobe Reader version X or higher. (Tiling options are not available on version 9 or lower.)

1. Open PDF and resave PDF onto your computer.
2. Open resaved PDF and choose Print.
3. Under Paper Size and Handling menu, choose Poster.
4. Select Cut Marks and Tile only large pages and Labels options.
5. Press OK to print.
6. Use the cut marks to line up the pages and tape together to assemble into large pattern page.







WIDE-LEG LOUNGE PANTS
FRONT

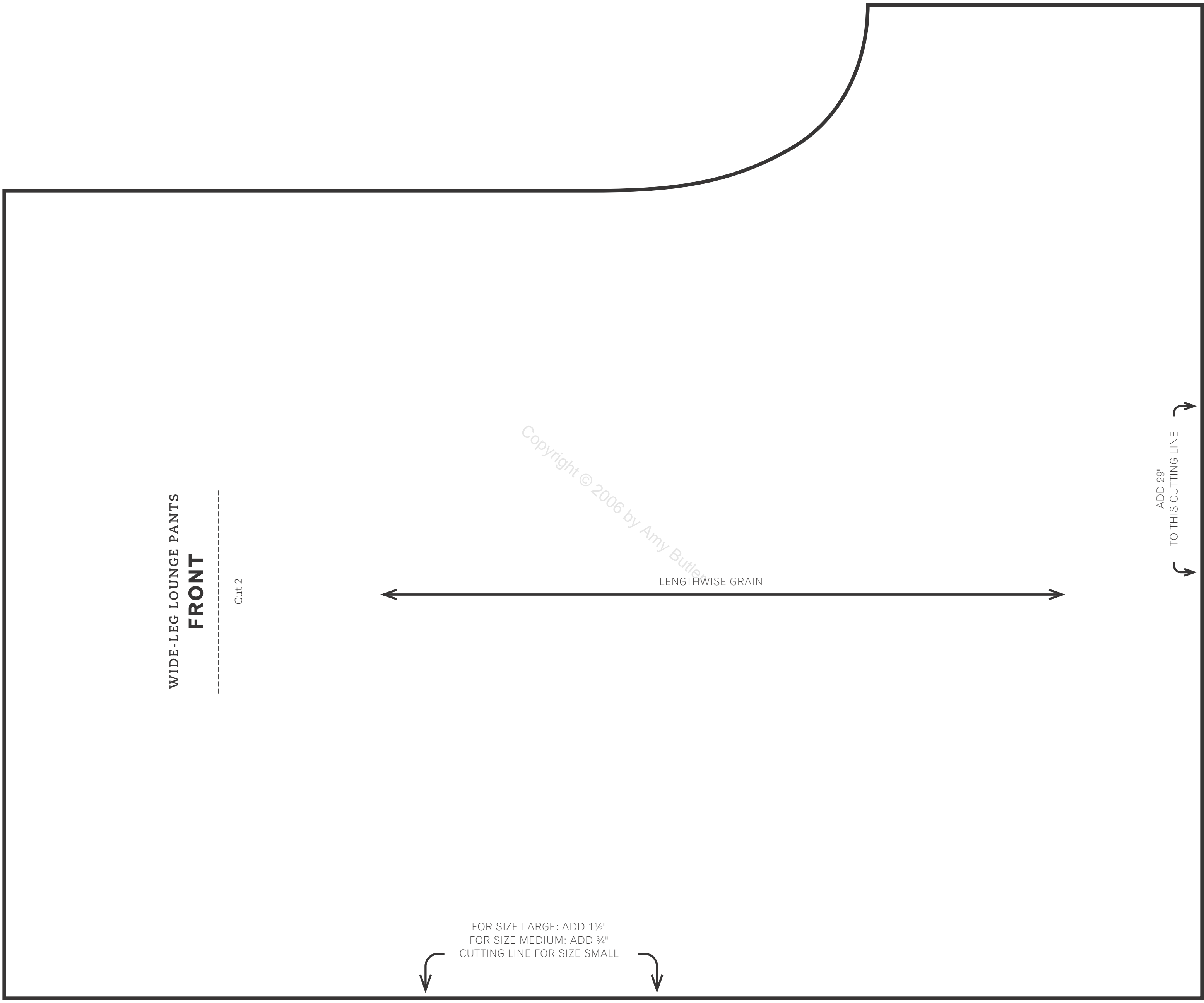
Cut 2

Copyright © 2006 by Amy Butler

LENGTHWISE GRAIN

ADD 29"
TO THIS CUTTING LINE

FOR SIZE LARGE: ADD 1½"
FOR SIZE MEDIUM: ADD ¾"
CUTTING LINE FOR SIZE SMALL



MATCH THIS DOTTED LINE TO THE DOTTED LINE ON PATTERN PIECE
LABELED "BACK EXTENSION"

WIDE-LEG LOUNGE PANTS
BACK

Cut 2

FOR SIZE LARGE: ADD 1½"
FOR SIZE MEDIUM: ADD ¾"
CUTTING LINE FOR SIZE SMALL

LENGTHWISE GRAIN

Copyright © 2006 by Amy Butler

ADD 29"
TO THIS CUTTING LINE

WIDE-LEG LOUNGE PANTS
BACK EXTENSION

Cut 2

MATCH THIS DOTTED LINE TO THE DOTTED LINE
ON PATTERN PIECE LABELED "BACK"

KIMONO ROBE
NECK TRIM

Cut 1 on the fold for Exterior

• START AND STOP STITCHING AT THE
DOT AND CLIP UP TO THE DOT

Copyright © 2006 by Amy Butler

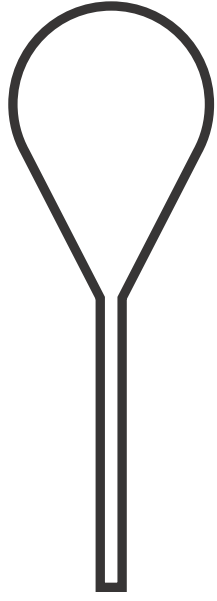
KIMONO ROBE
FRONT TRIM

Cut 2 for Exterior
(Plus the added length for the size
you are making)

LENGTHWISE GRAIN

PLACE THIS EDGE ON THE FOLD

ADD EXTRA LENGTH BELOW
THIS LINE



TOP PANEL

Cut 1 for Canvas (for the Top Panel fold at the cutting line)

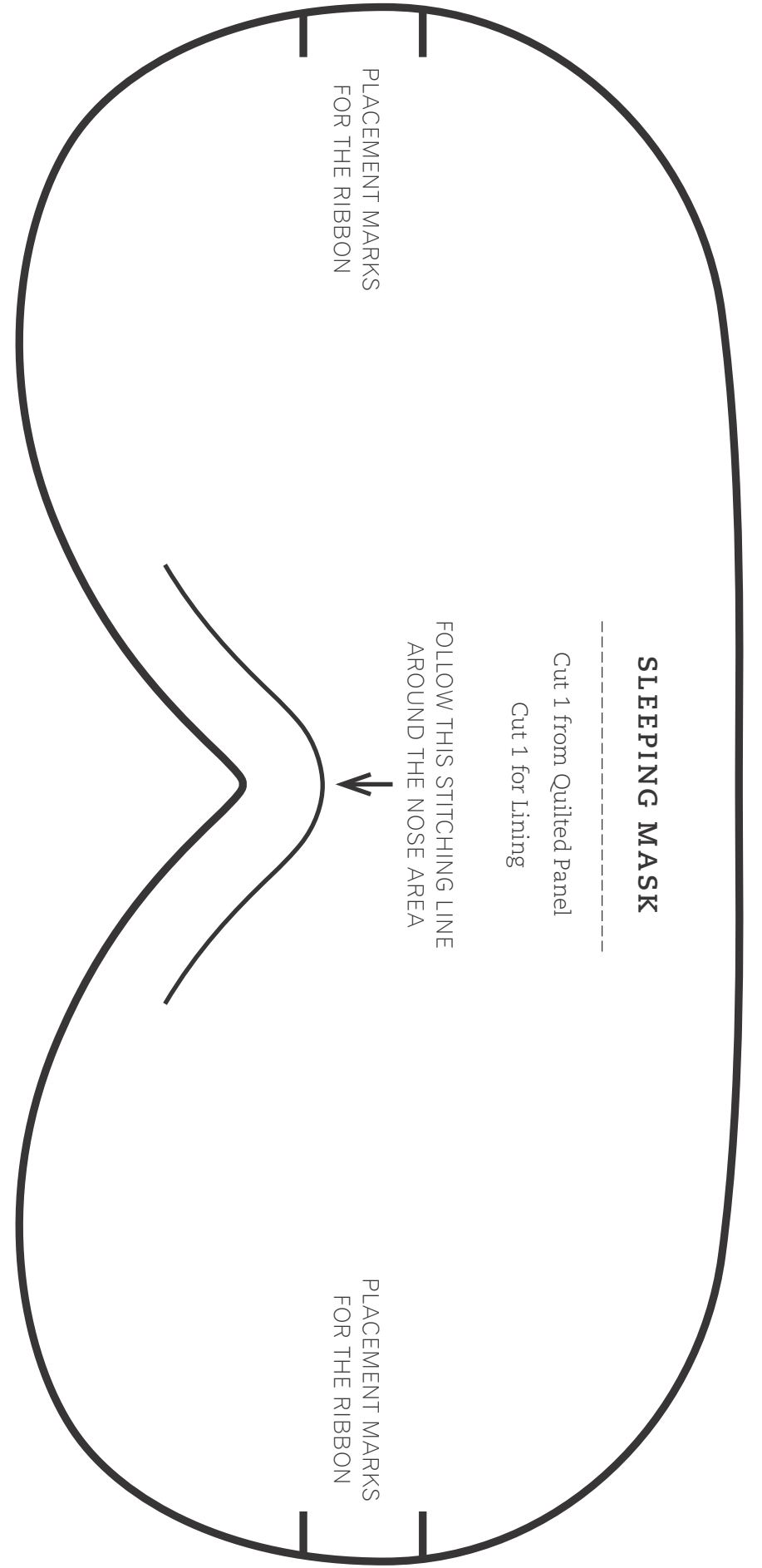
CUTTING LINE FOR THE TOP PANEL

LENGTHWISE GRAIN

Copyright © 2006 by Amy Butler

HANGING TOILETRY BASKET BACK PANEL

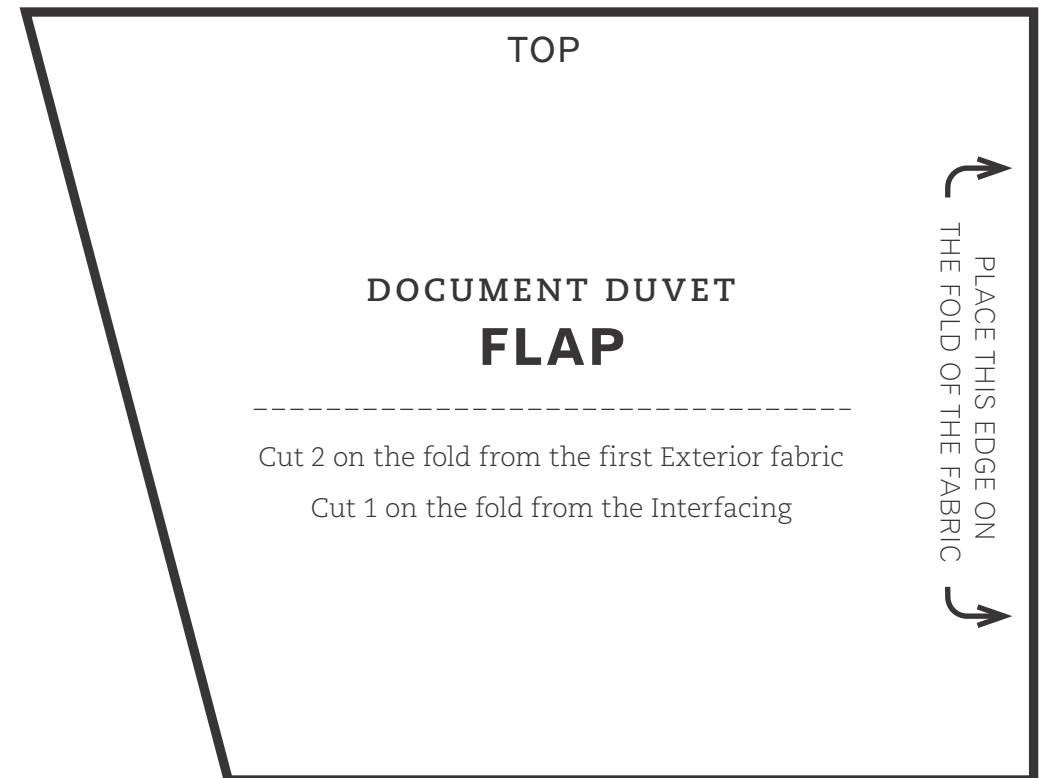
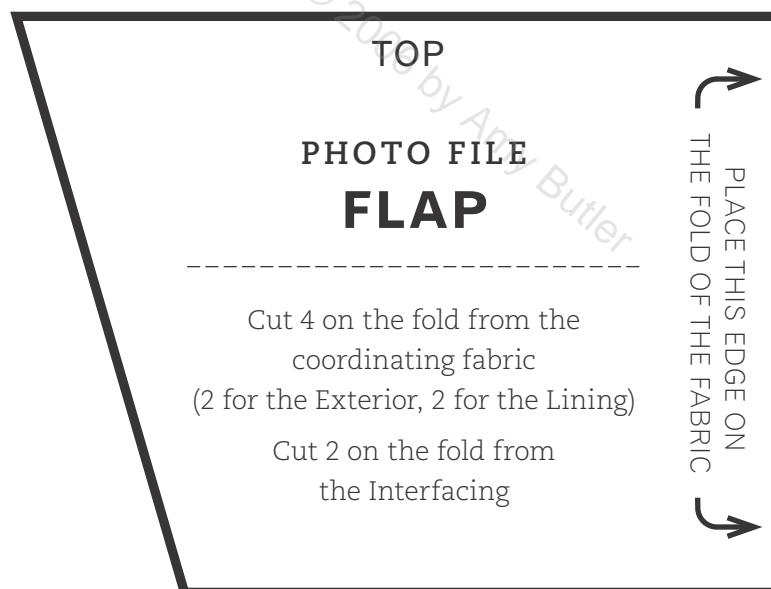
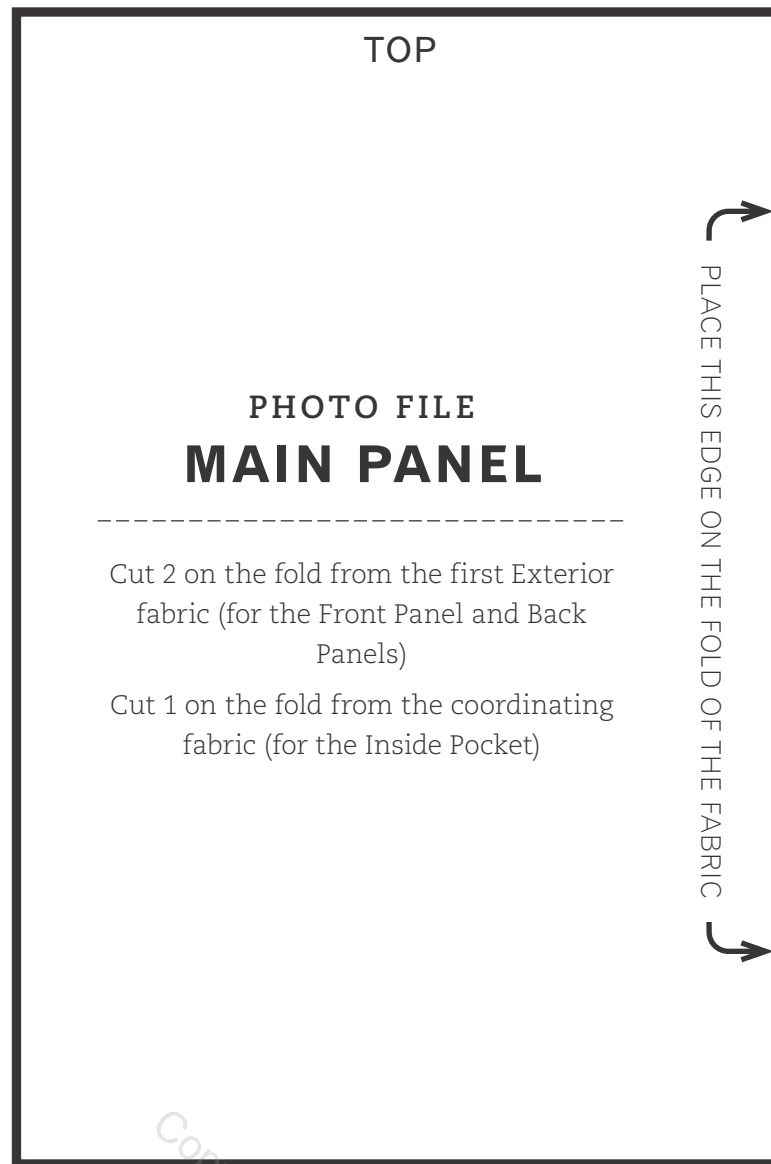
Cut 2 for Lining (for the Back Panel use the entire pattern piece)



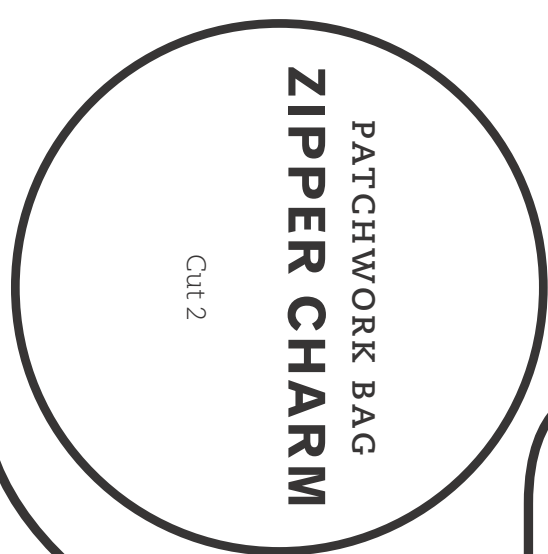
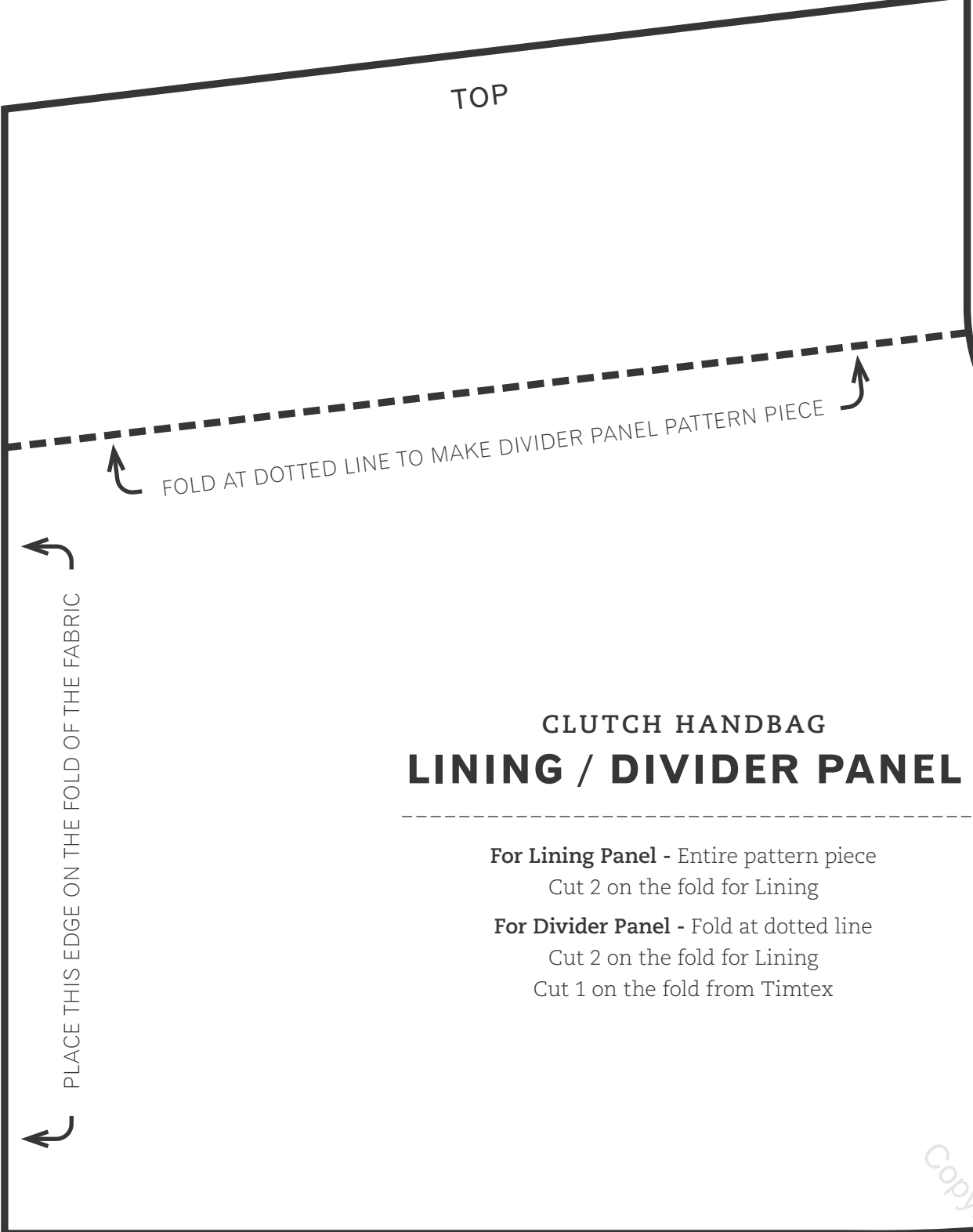
OVERSIZED LAUNDRY BAG
BOTTOM

Cut 2 for Exterior Main Fabric
Cut 1 from Canvas
Cut 1 from Timtex

Copyright © 2006 by Amy Butler



Copyright © 2010 by Amy Butler



**CLUTCH HANDBAG
LINING / DIVIDER PANEL**

For Lining Panel - Entire pattern piece
Cut 2 on the fold for Lining

For Divider Panel - Fold at dotted line
Cut 2 on the fold for Lining
Cut 1 on the fold from Timtex

Copyright © 2006 by Mary Butler

