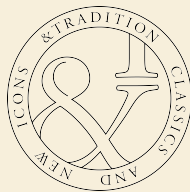
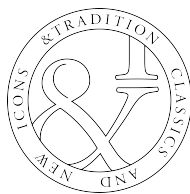


Fabric & Leather



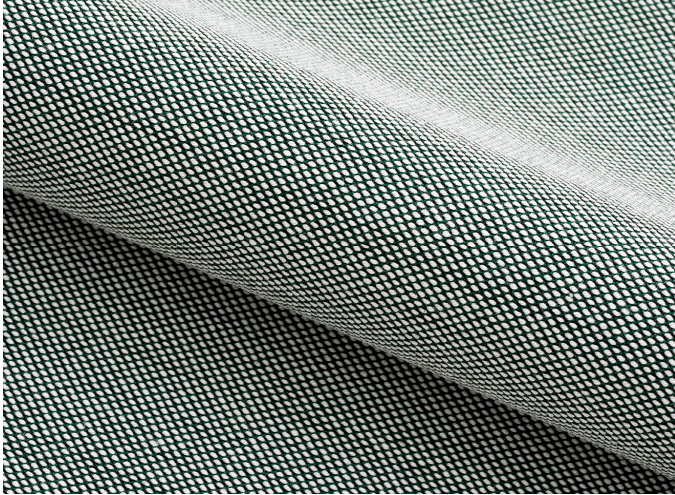
& Tradition®

Fast Track Fabric & Leather



&Tradition®

Steelcut Trio 3 / Kvadrat fast track fabric



Steelcut Trio 3

90% new wool, 10% nylon

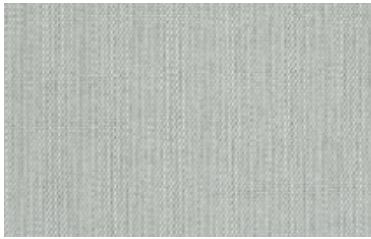
140 cm wide

Design Frans Dijkmeijer and Giulio Ridolfo

Steelcut Trio is a hardwearing woollen upholstery textile with the same construction as Steelcut. Originally designed by Frans Dijkmeijer, it comes in updated colourways crafted by Giulio Ridolfo.

The three-dimensional surface of Steelcut Trio resembles small pyramids or steel points. Despite the complexity of the textile's innovative weave, it has a simple, precise expression. Steelcut Trio is yarn-dyed and made from 3 differently coloured yarns.

Steelcut Trio 3 / Kvadrat fast track fabric



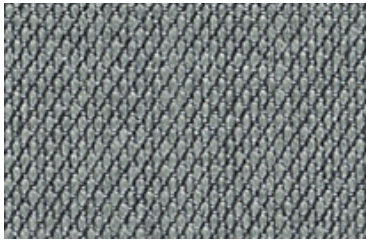
113



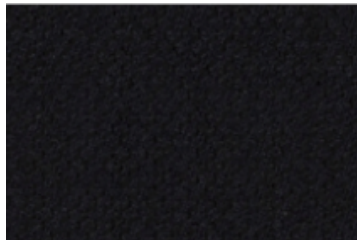
124



133



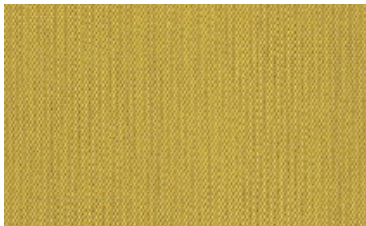
153



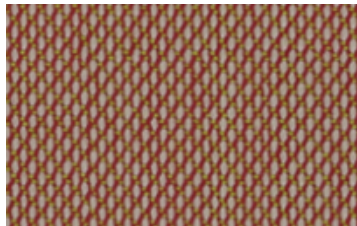
195



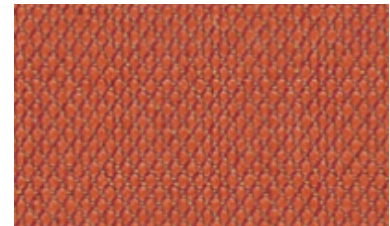
213



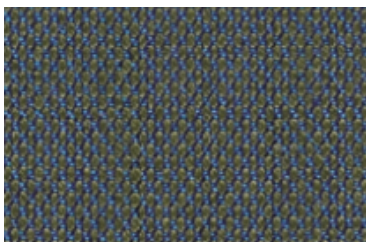
453



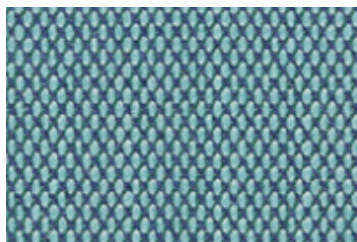
515



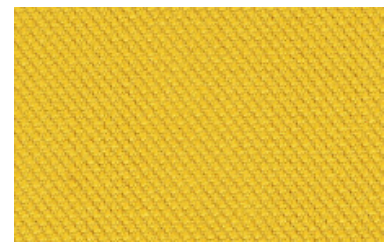
533



883



983



446



996

Remix / Kvadrat fast track fabric



Remix

92% wool, 8% nylon

135 cm wide

Design: Giulio Ridolfo

Remix 2 is an elegant woollen upholstery textile created by acclaimed designer Giulio Ridolfo.

Featuring a plain, tight and minimalistic weave, Remix is made from melange yarns, and, consequently, offers exceptional colour depth. These yarns comprise up to three colours and, as two differently coloured yarns are used to create every colourway, each combines up to six hues. This combination creates a lively play of irregular colours across the fabric. Giulio Ridolfo: “Remix shows how beautiful a yarn can be and projects a strong sense of craftsmanship.”

Remix / Kvadrat fast track fabric



123



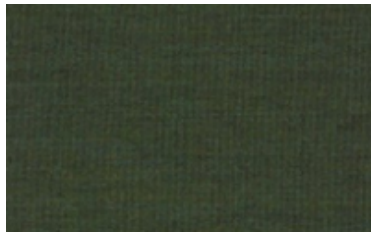
133



163



173



982



143



873



823

Hallingdal / Kvadrat fast track fabric



Hallingdal 65

70% wool, 30% viscose

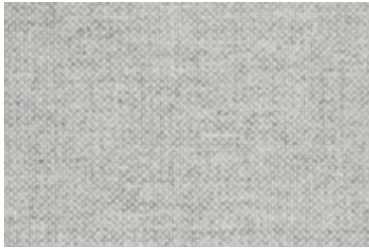
130 cm wide

Design: Nanna Ditzel (1923-2005)

Kvadrat's first textile 'Hallingdal' has become the archetype of woollen textiles. The very durable upholstery fabric was originally designed in 1965 by Nanna Ditzel, and is now available in a version with an updated colour scale: Hallingdal 65.

Hallingdal 65 is made of wool and viscose, which complement each other well: the wool provides excellent durability and flexibility, whilst the viscose adds brilliance and depth to the colour. Both materials are dyed before they are spun, which highlights the rich texture of the fabric.

Hallingdal / Kvadrat fast track fabric



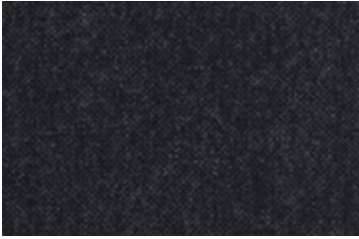
110



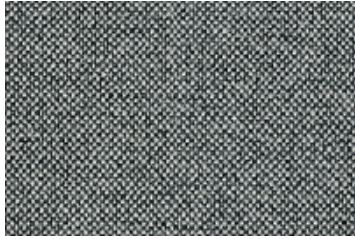
116



130

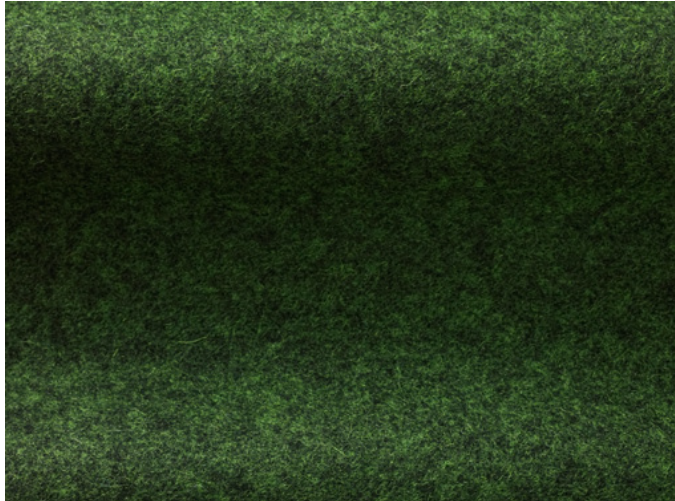


180



126

Divina Melange / Kvadrat fast track fabric



Divina Melange

100% new wool

150 cm wide

Design: Finn Sködt MDD AGI

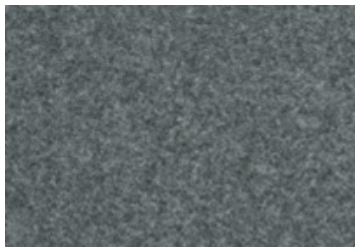
Divina Melange is a textile characterised by its lack of texture and nap and consequently the fabric accentuates the dimensions of the furniture, giving prominence to the colours.

Melange means mixture. The existing six grey and beige colourways are produced by mixing varying proportions of either black or brown wool with white wool. The different colours of wool are mixed before the garment is spun.

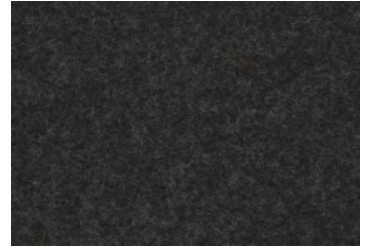
Divina Melange / Kvadrat fast track fabric



120

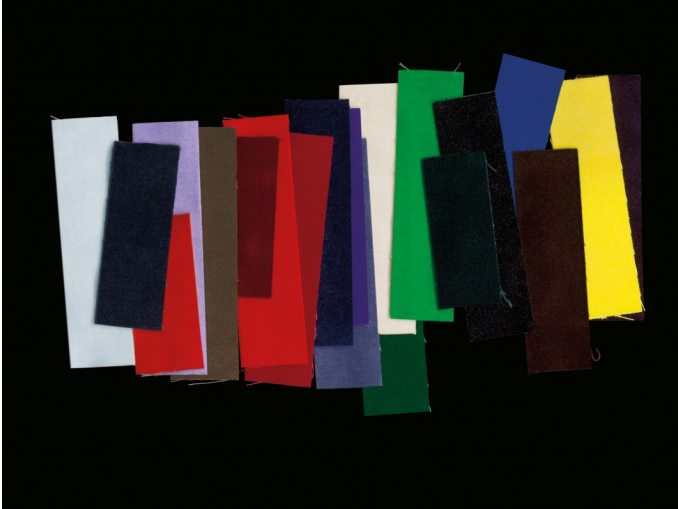


170



180

Harald / Kvadrat fast track fabric



Harald

100% Cotton

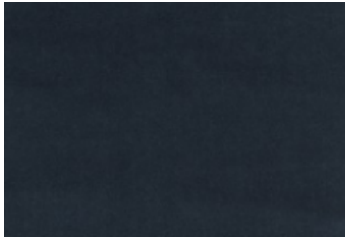
140 cm wide

Design: Raf Simons & Fanny Aronsen

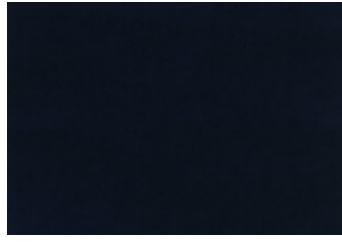
A closely-woven, very short-pile velour, Harald brings the fresh, soft texture of cotton to a directionless velvety textile. The intense colour offered by this matte velour places the focus strongly onto the silhouette of the upholstered object, emphasising its shape and contours.

Originally designed by Fanny Aronsen, Harald comes in a new colour palette conceived by Raf Simons offering a particularly large selection of vivid keynote tones, including primrose yellow, burnt orange, raspberry, lavender, aubergine and dark mint green, alongside more natural tones. Harald is a durable fabric suitable for use as curtains as well as in upholstery.

Harald / Kvadrat fast track fabric



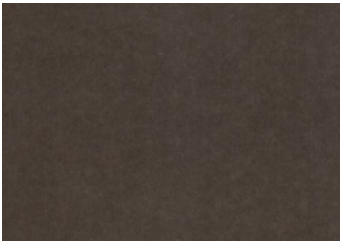
182



792

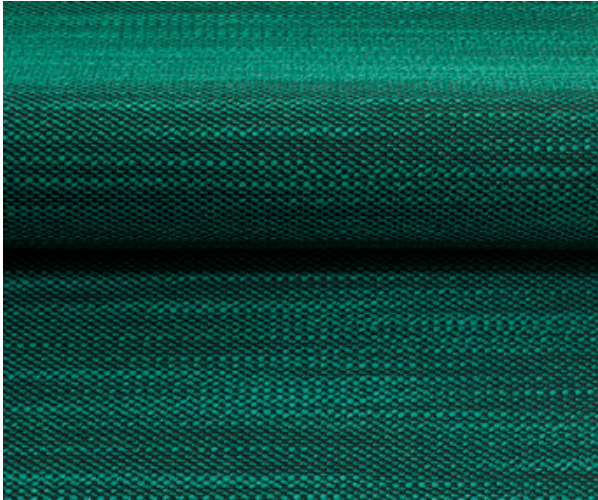


982



242

Lila / Kvadrat fast track fabric



Lila

92% new wool, worsted, 8% nylon

140 cm wide

Design: Giulio Ridolfo

Crafted by design duo Doshi Levien, Lila is vibrant upholstery textiles with an exceptional colour story.

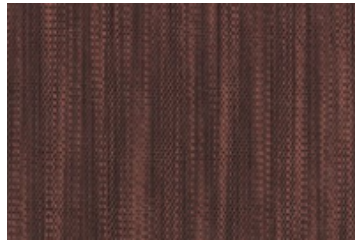
Lila combines two voluminous unicoloured yarns: a regular yarn in the weft and an irregularly textured slub yarn in the warp. This gives them a tactile, lively surface that has a bouclé feel and the cool touch of linen.

To realise their vision, Doshi Levien mixed more than 100 gouache colours by hand, then hand-painted them onto samples. These were used as reference in production to dye the yarn with great accuracy – resulting in sophisticated, elegant colours that cannot be found in any existing colour systems.

Lila / Kvadrat fast track fabric



111



661



721

Fiord / Kvadrat fast track fabric



Fiord

92% wool, 8% polyamide

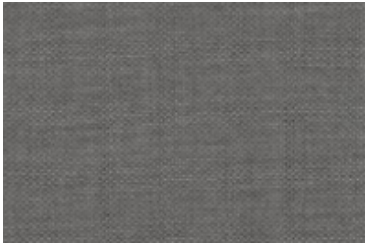
140cm wide

Design: Louise Sigvardt & Tone Barnung

Fiord is a versatile woollen upholstery textile with a subtle three-dimensional look. Originally designed by Norwegian designer Tone Barnung, it comes in refreshed colours created in collaboration with Louise Sigvardt.

The construction of Fiord combines a *mélange* yarn with a unicoloured yarn that creates pearl-like dots that play across the textile's surface. This sophisticated expression reflects a key source of inspiration behind the design: moonlight glittering like pearls on the rippling waters of a Norwegian fjord.

Fiord / Kvadrat fast track fabric



151



171



991

Olavi / Romo fast track fabric



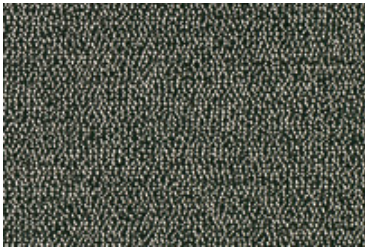
Olavi

45% VI 36% CO 15% PC 4% LI

138cm wide

A beautiful, textural semi-plain with an irregular weave structure and understated appearance, available in a range of contemporary shades.

Olavi / Romo fast track fabric



03

Ruskin / Romo fast track fabric



Ruskin

70% VI 15% LI 10% WO 5% PA

140 cm wide

Perfect for upholstery this versatile plain portrays a natural quality with an element of textural luxury. A blend of viscose, linen and wool creates a beautiful movement of colour and gives the fabric its textured appearance.

Ruskin / Romo fast track fabric



03



05



12



33

Linara / Romo fast track fabric



Linara

63% CO 37% LI

140cm wide

An exquisite cotton-linen blend, Linara has a beautiful brushed finish with an exceptionally soft, peach-skin feel that adds a luxurious quality to this versatile plain. Highly acclaimed, Linara is a washable linen union that remains a go to plain offering style and versatility along with practicality and durability.

Linara / Romo fast track fabric



103



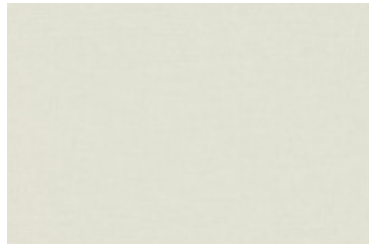
142



196



198



311

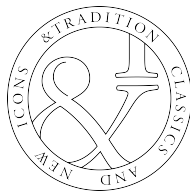


415



443

Fabric & Leather Overview



&Tradition®

CATCH LOUNGE



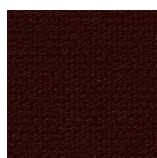
JH13
Warm black legs
Divina 3 944



JH13
Warm black legs
Jacquard 5



JH13
Warm black legs
Hallingdal 65 224



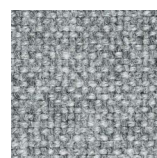
JH13
Warm black legs
Steelcut 2 655



JH14
Warm black legs
Divina 3 793



JH14
Warm black legs
Steelcut 2 365

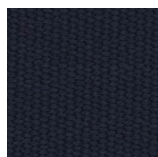


JH14
Warm black legs
Hallingdal 65 130

CATCH



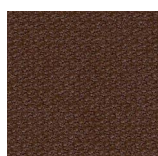
JH1
Smoked oak legs
Sunniva 717



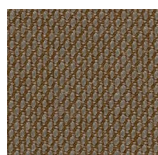
JH1
Smoked oak legs
Balder 3 792



JH2
Black legs
Steelcut 2 255



JH2
Black legs
Steelcut 2 365



JH2
Black legs Steelcut
Trio 2 245



JH15
Black legs
Divina 3 552



JH15
Black legs
Divina 3 944



JH15
Black legs Steelcut
Trio 2 325

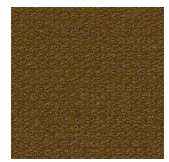


JH15
Black legs
Steelcut 2 240

CLOUD / FLY



LN3.2
Warm black legs
Hot madison 724



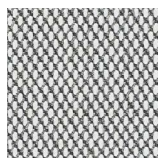
LN4
Warm black legs
Steelcut 2 265



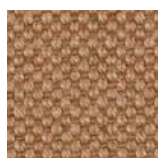
LN3.2
Warm black legs
Steelcut 2 365



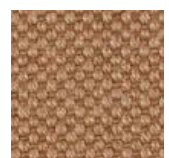
LN4
Warm black legs
Steelcut 2 240



LN3.2 Chromed
legs Steelcut trio
133



LN3.2
Warm black legs
Hot madison 495



SC3
Smoked oiled oak
Hot madison 495

MAYOR



AJ5
White oiled oak
Divina 3 346



AJ5
Black stained oak
Divina 3 552



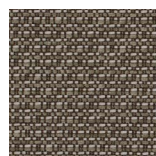
AJ5
White oiled oak
Divina 3 944



AJ5
Black stained oak
Hallingdal 224



AJ5
Smoked oiled oak
Jacquard 5



AJ5
Black stained oak
Tempt 61171

IN BETWEEN



SK2
Black stained ash
Fiord 191



SK2
Smoked oiled oak
Fiord 171



SK2
White oiled oak
Fiord 251



SK8
Black stained oak
Fiord 191



SK8
Smoked oiled oak
Fiord 171

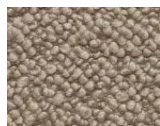


SK8
White oiled oak
Fiord 251

KARAKORUM / Dedar



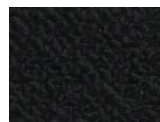
Little Petra VB1



Karakorum 003



Karakorum 004



Karakorum 006

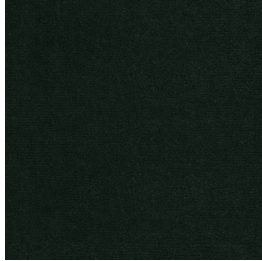


Karakorum 001

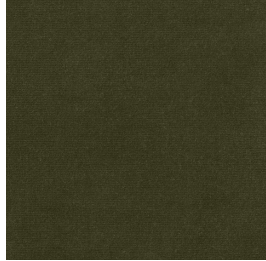


Karakorum 005

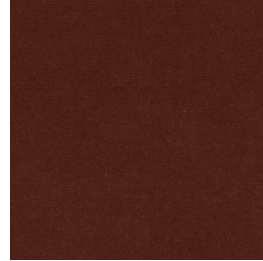
VELVET/ &Tradition



VELVET 1
FOREST



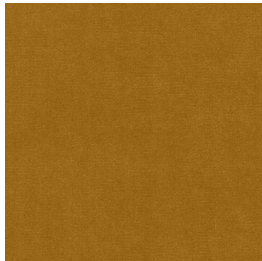
VELVET 2
PINE



VELVET 3
MAROON



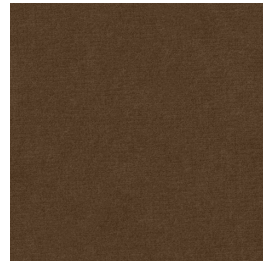
VELVET 4
CLAY



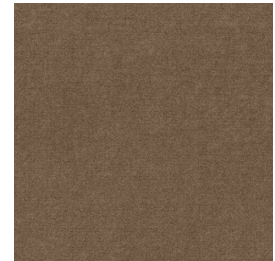
VELVET 5
AMBER



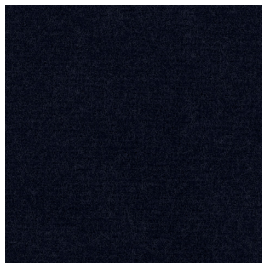
VELVET 6
DANDELION



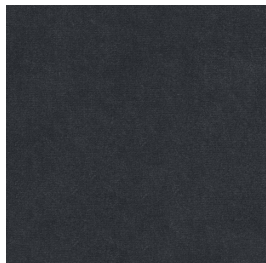
VELVET 7
CINNAMON



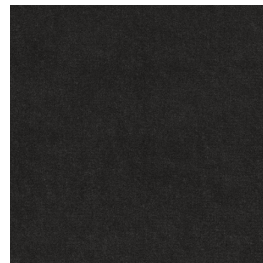
VELVET 8
ALMOND



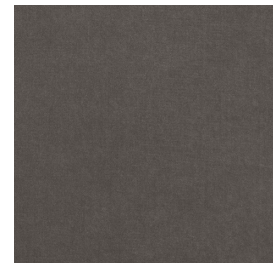
VELVET 9
MIDNIGHT



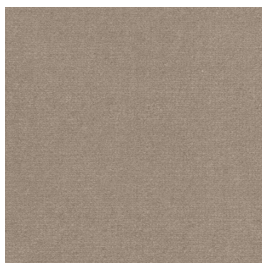
VELVET 10
TWILIGHT



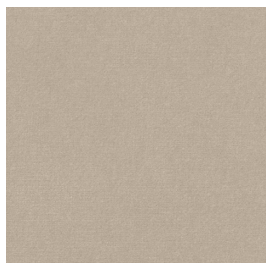
VELVET 11
STONE



VELVET 12
ASH



VELVET 13
IVORY



VELVET 14
PEARL