

n

a

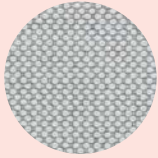
u

nau standards
upholstery & surfaces overview

contents

fabric group 1	merit	3
	mode	4
fabric group 2	allium	5
	patio <i>outdoor</i>	6
	pure	7
	san	8
fabric group 3	bespoke	9
	colline 2	10
	re-wool	11
	strata	12
fabric group 4	divina md	13
	divina melange 3	14
	hallingdal 65	15
	hearth	16
	mosaic 2	17
	nestle	18
	steelcut trio 3	19
	sunniva 3	20
fabric group 5	coda 2	21
	gentle 2	22
	triangle	23
	vidar 4	24
fabric group 6	huddle	25
	pressed linen	26
	topiary	27
leather group 1	panorama	28
leather group 2	vienna	30
leather group 3	sardinia	32
	surfaces	33
	product overview	34

fabric group 1



merit

001

content:
76% post-consumer
recycled polyester
24% polyester

durability:
100,000 double
rubs Wyzenbeek

lightfastness:
AATCC 16E, 40+
hours

flammability:
ASTM C423, 0.80
NRC

sustainability:
greenguard and
greenguard gold
certified
GRS Certified
REACH Compliant



002



003



004



005



006



007



008



009



010



011



012



013



014



015



016



017



018



019



020



021



022



023



024



025



026



027



028



029



030



031



032



033



034



035



036



037



038



039



040



041



042



043

fabric group 1



mode

001

content:
80% Post-Consumer Recycled Polyester
20% Polyester

durability:
100,000 double rubs Wyzenbeek

lightfastness:
AATCC 16E, 40+ hours

flammability:
AS/NZS 1530.3

sustainability:
greenguard and greenguard gold certified
GRS Certified
REACH Compliant



002



003



004



005



006



007



008



009



010



011



012



013



014



015



016



017



018



019



020



021



022



023



024



025



026



027



028



029



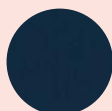
030



031



032



033



034



035



036



037



038



039



040



041



042



043

fabric group 2



allium

antique rose

content:
58% VI
31% CO
11% LI

durability:
33,000 Martindale
Cycles

lightfastness:
UV 5-6/8 Blue Scale



fabric group 2



patio outdoor

110

content:
100% Trevira CS

durability:
50,000 Martindale

lightfastness:
7

pilling:
4-5 (ISO 1-5)

flammability:
Fire resistant

sustainability:
EU Ecolabel,
Greenguard Gold,
HPD, EPD



100



140



150



170



200



210



220



230



340



370



410



430



440



450



550



570



650



730



740



750



780

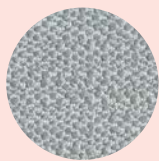


840



970

fabric group 2



pure

Duckegg

content:
55% PC
25% VI
20% PL

durability:
44,000 Martindale
Cycles
55,000 Wyzenbeek
Double Rubs

lightfastness:
UV 6-7/8 Blue Scale

flammability:
NFPA 260 - Class 1
CAL 117-2013



Ink



Nude



Pearl



Pumice



Silk



Silver



Slate



Soot



Stone



Whitewash

fabric group 2



san

130

content:
92% new wool
worsted
8% nylon

durability:
60,000 Martindale

lightfastness:
7

pilling:
3-4 (ISO 1-5)

flammability:
Fire resistant

sustainability:
EU Ecolabel,
Greenguard Gold,
HPD, EPD



150



170



180



190



220



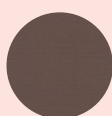
230



350



360



370



390



410



430



530



540



570



580



630



710



730



750



770



780



790



910



950



990

fabric group 3



bespoke

allium

content:
54% VI
34% CO
12% PL

durability:
80,000 Wyzenbeek
Double Rubs
85,000 Martindale
Cycles

lightfastness:
UV 5/8 Blue Scale

flammability:
NFPA 260 - Class 1
CAL 117-2013



aquamarine



atlantic



blush



champagne



copper



crimson



dahlia



dove



emerald



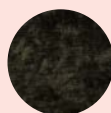
gilt



macaroon



marcasite



martini



Midnight



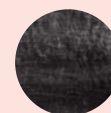
mink



mist



pearl



pewter



pimento



powder blue



red velvet



sable



silver

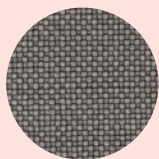


smoke



topaz

fabric group 3



colline

127

content:
75% new wool
worsted
17% polyacrylic
8% nylon

durability:
100,000 Martindale

lightfastness:
7

pilling:
4-5 (ISO 1-5)

flammability:
Fire resistant

sustainability:
EU Ecolabel,
Greenguard Gold,
HPD, EPD



147



177



227



347



397



657



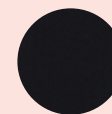
677



737



787

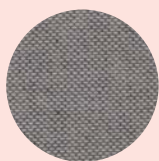


797



987

fabric group 3



re-wool

108

content:
45% new wool
worsted
45% recycled wool
10% nylon

durability:
100,000 Martindale

lightfastness:
5-7 (ISO 1-8)

pilling:
4 (ISO 1-5)

flammability:
Fire resistant

sustainability:
EU Ecolabel,
Greenguard Gold,
HPD, EPD



128



158



198



218



358



378



408



448



458



558



568



628



648



658



718



758



768



828

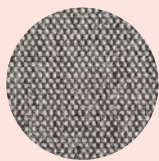


858



868

fabric group 3



strata

charcoal

content:
63% PC
15% PL,
12% WO
10% CO

durability:
100,000 Martindale
Cycles
45,000 Wyzenbeek
Double Rubs

lightfastness:
UV 6-7/8 Blue Scale

flammability:
NFPA 260 - Class 1
CAL 117-2013



chalk



linen



powderblue



silver



whisper pink

fabric group 4



divina md

193

content:
100% new wool

durability:
45,000 Martindale

lightfastness:
5-6 (ISO 1-8)

pilling:
3 (ISO 1-5)

flammability:
Fire resistant

sustainability:
EU Ecolabel,
Greenguard Gold,
HPD, EPD



203



213



293



343



353



363



413



433



453



613



633



653



673



683



713



733



743



753



773



783



813



843



873



913



943



973

fabric group 4



divina melange 3

120

content:
100% new wool

durability:
45,000 Martindale

lightfastness:
6-7

pilling:
3 (ISO 1-5)

flammability:
ASTM C423, 0.80
NRC

sustainability:
EU Ecolabel,
Greenguard Gold,
HPD, EPD



147



170



180



227



237



260



277



280



367



427



457



467



471



517



527



547



557



567



571



581



597



617



620



647



677



687



731



747



757



777



787



821



871



917



937



967



977

fabric group 4



hallingdal 65

103

content:
70% new wool
30% viscose

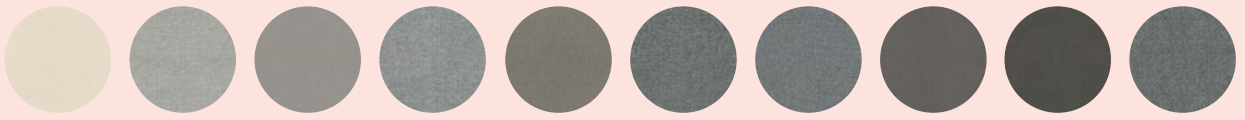
durability:
100,000 Martindale

lightfastness:
7

pilling:
3-4 (ISO 1-5)

flammability:
Fire resistant

sustainability:
EU Ecolabel,
Greenguard Gold,
HPD, EPD



100 110 113 116 123 126 130 143 153 166



173 180 190 200 220 224 227 270 350 368



370 376 390 407 420 457 526 547 563 573



590 596 600 657 660 674 680 687 694 702



723 733 750 753 754 763 764 773 810 840



850 890 907 944 960 968 980

fabric group 4



hearth

006

content:
32% Wool
31% Acrylic
30% Cotton
7% Polyester

durability:
80,000 double rubs
Wyzenbeek

lightfastness:
AATCC 16E, 40+
hours

flammability:
AS/NZS 3837
Unadhered

sustainability:
Greenguard and
Greenguard Gold
Certified
Healthier Hospitals
Compliant



001



002



003



004



005



007



008



009



010



011



012



013



014



015

fabric group 4



mosaic 2

182

content:
46% polyester
27% new wool
12% polyester
9% nylon
6% elastane

durability:
100,000 Martindale

lightfastness:
6-7 (ISO 1-8)

pilling:
4-5 (ISO 1-5)

flammability:
Fire resistant

sustainability:
Greenguard Gold,
EPD



222



262



422



472



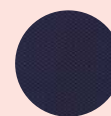
532



642



662



672



682



692



722



772



922



972

fabric group 4



nestle

002

content:
39% Wool
28% Cotton
20% Rayon
13% Acrylic

durability:
20,000 Cycles
Martindale

lightfastness:
AATCC 16E, 40+
hours

pilling:
class 4

flammability:
CAL 117-2013

sustainability: LBC
Red List Free
REACH Compliant
Contains Bio-Based
Materials



001



003



004

fabric group 4



steelcut trio 3

105

content:
90% new wool
worsted
10% nylon

durability:
100,000 Martindale

lightfastness:
6-7

pilling:
4 (ISO 1-5)

flammability:
Fire resistant

sustainability:
EU Ecolabel,
Greenguard Gold,
HPD, EPD



fabric group 4



sunniva 3

132

content:
58% new wool
25% viscose
8% linen
5% nylon
4% polyester

durability:
50,000 Martindale

lightfastness:
5

pilling:
3 (ISO 1-5)



113



133



152



153



163



173



183



192



193



223



233



236



242



253



352



353



363



373



383



423



662



683



713



717



723



752



763



773



783



811



863



952

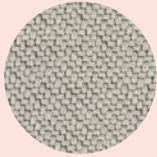


953



1079

fabric group 5



coda 2

100

content:
90% new wool
10% nylon

durability:
100,000 Martindale

lightfastness:
6

pilling:
4 (ISO 1-5)

flammability:
Fire resistant

sustainability:
EU Ecolabel,
Greenguard Gold,
HPD, EPD



103



116



182



222



232



242



362



382



410



422



442



610



632



642



722



762



962

fabric group 5



gentle 2

113

content:
60% new wool
20% nylon
20% polyester

durability:
90,000 Martindale

lightfastness:
6-7 (ISO 1-8)

pilling:
4-5 (ISO 1-5)

flammability:
Fire resistant



133



183



193



203



223



373



443



553



573



623



663



673



683



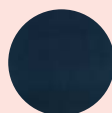
733



753



783



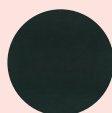
873



933



963



973

fabric group 5



triangle

122

content:
65% polyester
filling
17% new wool
13% polyester
5% nylon

durability:
60,000 Martindale

lightfastness:
7 (ISO 1-8)

pilling:
4-5 (ISO 1-5)

flammability:
Fire resistant

sustainability:
Greenguard Gold,
HPD, EPD



152



192



232



252



292



422



532



572



592



662



672



732



772



792



932



972

fabric group 5



vidar 4

123

content:
94% new wool
6% nylon

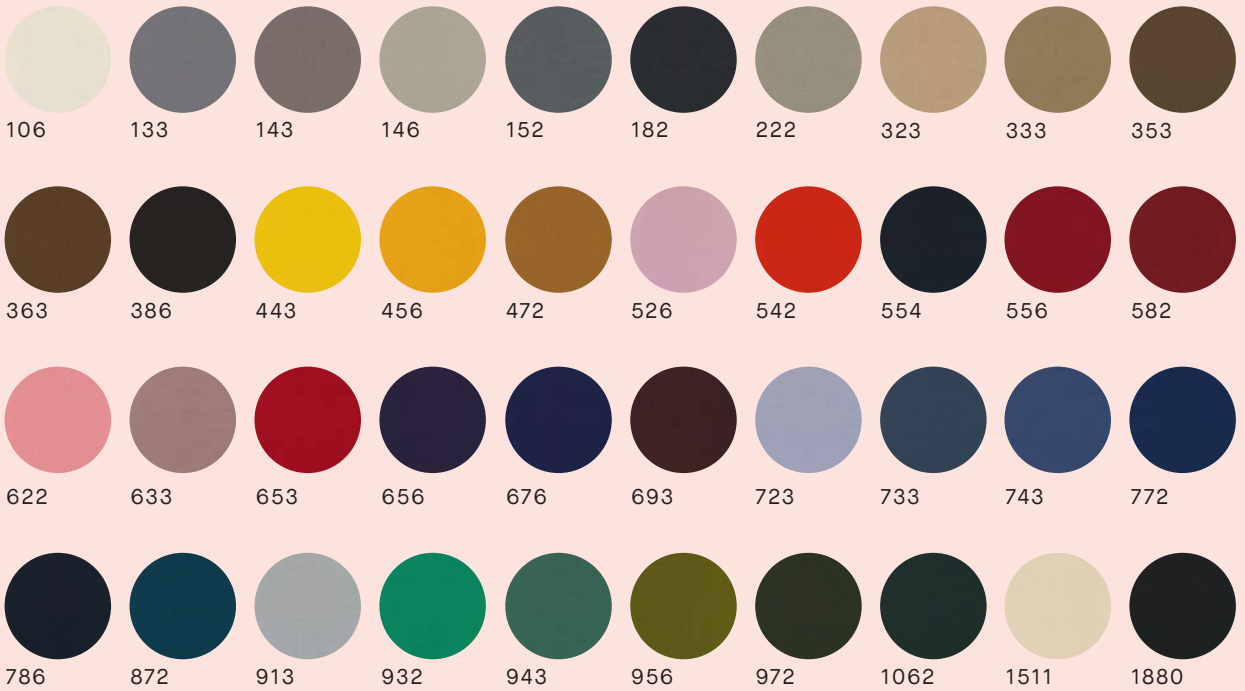
durability:
100,000 Martindale

lightfastness:
7

pilling:
4 (ISO 1-5)

flammability:
Fire resistant

sustainability:
EU Ecolabel,
Greenguard Gold,
HPD, EPD



fabric group 6



huddle

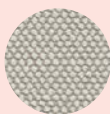
001

content:
41% Wool
31% Rayon
27% Cotton
1% Nylon

lightfastness:
AATCC 16E, 40+
hours

flammability:
CAL 117-2013

sustainability:
Healthier Hospitals
Compliant
LBC Red List Free



002



003

fabric group 6



pressed linen

003

content:
46% Linen
44% Rayon
10% Nylon

durability:
25,000 Cycles
Martindale

lightfastness:
AATCC 16E, 40+
hours

sustainability:
LBC Red List Free
REACH Compliant



001



002



004



005

fabric group 6



topiary

bronze

content:
45% CO
37% VI
14% LI
4% PL

durability:
50,000 Martindale
Cycles
50,000 Wyzenbeek
Double Rubs

lightfastness:
UV 6/8 Blue Scale

flammability:
NFPA 260 - Class 1



blush



burgundy



linen



martini



oyster



peach



silver

leather group 1



panorama

ablaze

content:
100% semi-aniline
leather

durability:
50,000 cycles
EN ISO 3377-1

lightfastness:
EN ISO 105-B02

flammability:
AS/NZS 1530.3



leather group 1



panorama

zucchini

content:
100% semi-aniline
leather

durability:
50,000 cycles
EN ISO 3377-1

lightfastness:
EN ISO 105-B02

flammability:
AS/NZS 1530.3



obsidian



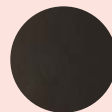
peppercorn



peru



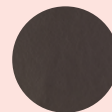
pillarbox



rainforest



reindeer



robusta



rooster



rose



royalty



rustymetal



saddlebag



sailcloth



sandpit



seal



shark



sherbet



shortbread



siberia



silverfish



snowflake



soho



soul



space



spearmint



spinach



squash



sunrise



sutan



surf



tapestry



thistle



thunder



tomatina



treefrog



tribal



urban



veil



wicker



wisteria



zinc

leather group 2



vienna

amazon

content:
100% semi-aniline
leather

durability:
30,000 flexes
DIN 53329

lightfastness:
EN ISO 105-B02

flammability:
AS/NZS 1530.3



amarillo



amber



apfel



arctic



armygreen



ash



aubergine



azalea



bark



basalt



berry



bisque



blau



blueberry



brasil



braun



brioche



buckskin



canary



caramel



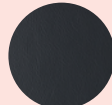
cognac



coral



crimson



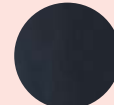
darkgrey



desert



eucalyptus



granite



grappa



gris



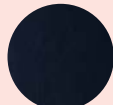
harlequin



haze



horizon



ink



jade



kahlua



kelp



kernal



kitt



kobalt



lager



lagoon



lava



liane



licorice



loam



loden



magenta



makara



mandarin



marble



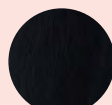
mauve



metal



mikado



mocca



mortar



mulberry



mushroom



mustard



nordic



notte

leather group 2



vienna

wheat

content:
100% semi-aniline
leather

durability:
30,000 flexes
DIN 53329

lightfastness:
EN ISO 105-B02

flammability:
AS/NZS 1530.3



ochre



opal



palomino



panna



parmesan



pastry



peat



petrol



pine



plume



pomegranate



pretzel



pumpkin



quill



ridge



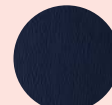
riverbed



rockmelon



rojo



royale



russet



salmon



sand



scarlet



schwartz



seafoam



seashell



seaweed



sepia



skyblue



sleet



sorrel



spice



springbok



squaw



stable



stone



storm



strudel



suppe



swabia



tallow



tangelo



terra



tigereye



timber



tinted



typhoon



viola



weiss

leather group 3



sardinia

barrique

content:
100% aniline
leather

durability:
30,000 flexes
DIN 53351

lightfastness:
EN ISO 105-B02

flammability:
AS/NZS 1530.3



cuoio



kalamata



lignite



marrone



naturale



powder

surfaces

timber



ash



black stained ash



oak

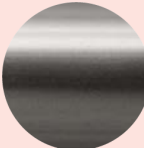


walnut

metal



brass



graphite



stainless steel

powdercoat



black



grey



white



burgundy



eucalypt



desert red

product overview

	Aran Bed	Aran Sofa	Aran Armchair	Bilgola	Bower	Fat Tulip Sofa	Fat Tulip Armchair	Loom	Loom Armchair	Plum	Sia	Sofala	Strand
mahram merit	•	•	•	•	•	•	•	•	•	•	•	•	•
mahram mode	•	•	•	•	•	•	•	•	•	•	•	•	•
mokum allium	•	•	•	•	•	•	•	•	•	•	•	•	•
mokum pure	•	•	•	•	•	•	•	•	•	•	•	•	•
kvadrat patio outdoor	•	•	•	•	•			•	•	•	•	•	•
kvadrat re-wool	•	•	•	•	•	•	•	•	•	•	•	•	•
kvadrat colline	•	•	•	•	•	•	•	•	•	•	•	•	•
kvadrat san	•	•	•	•	•	•	•	•	•	•	•	•	•
mokum strata	•	•	•	•	•	•	•	•	•	•	•	•	•
mokum bespoke	•	•	•	•	•	•	•	•	•	•	•	•	•
kvadrat steelcut trio 3	•	•	•	•	•		•	•	•	•	•	•	•
kvadrat sunniva	•	•	•	•	•	•	•	•	•	•	•	•	•
kvadrat divina melange	•	•	•	•	•	•	•	•	•	•	•	•	•
kvadrat divina md	•	•	•	•	•	•	•	•	•	•	•	•	•
kvadrat hallingdal 65	•	•	•	•	•	•	•	•	•	•	•	•	•
kvadrat triangle	•	•	•	•	•	•	•	•	•	•	•	•	•
kvadrat mosaic	•	•	•	•	•	•	•	•	•	•	•	•	•
mahram hearth	•	•	•	•	•	•	•	•	•	•	•	•	•
mahram nestle	•	•	•	•	•	•	•	•	•	•	•	•	•
kvadrat coda	•	•	•	•	•	•	•	•	•	•	•	•	•
kvadrat vidar 2	•	•	•	•	•	•	•	•	•	•	•	•	•
mahram gentle	•	•	•	•	•	•	•	•	•	•	•	•	•
maharam pressed linen	•	•	•	•	•	•	•	•	•	•	•	•	•
maharam huddle	•	•	•	•	•	•	•	•	•	•	•	•	•
pelle panorama		•	•	•	•	•	•	•	•	•	•	•	•
pelle vienna		•	•	•	•	•	•	•	•	•	•	•	•
pelle sardinia		•	•	•	•	•	•			•	•	•	•

for pricing, distribution, sales
and marketing please contact
info@naudesign.com

nau is represented exclusively
by Cult Design

www.naudesign.com
[@nau_design](https://www.instagram.com/nau_design)