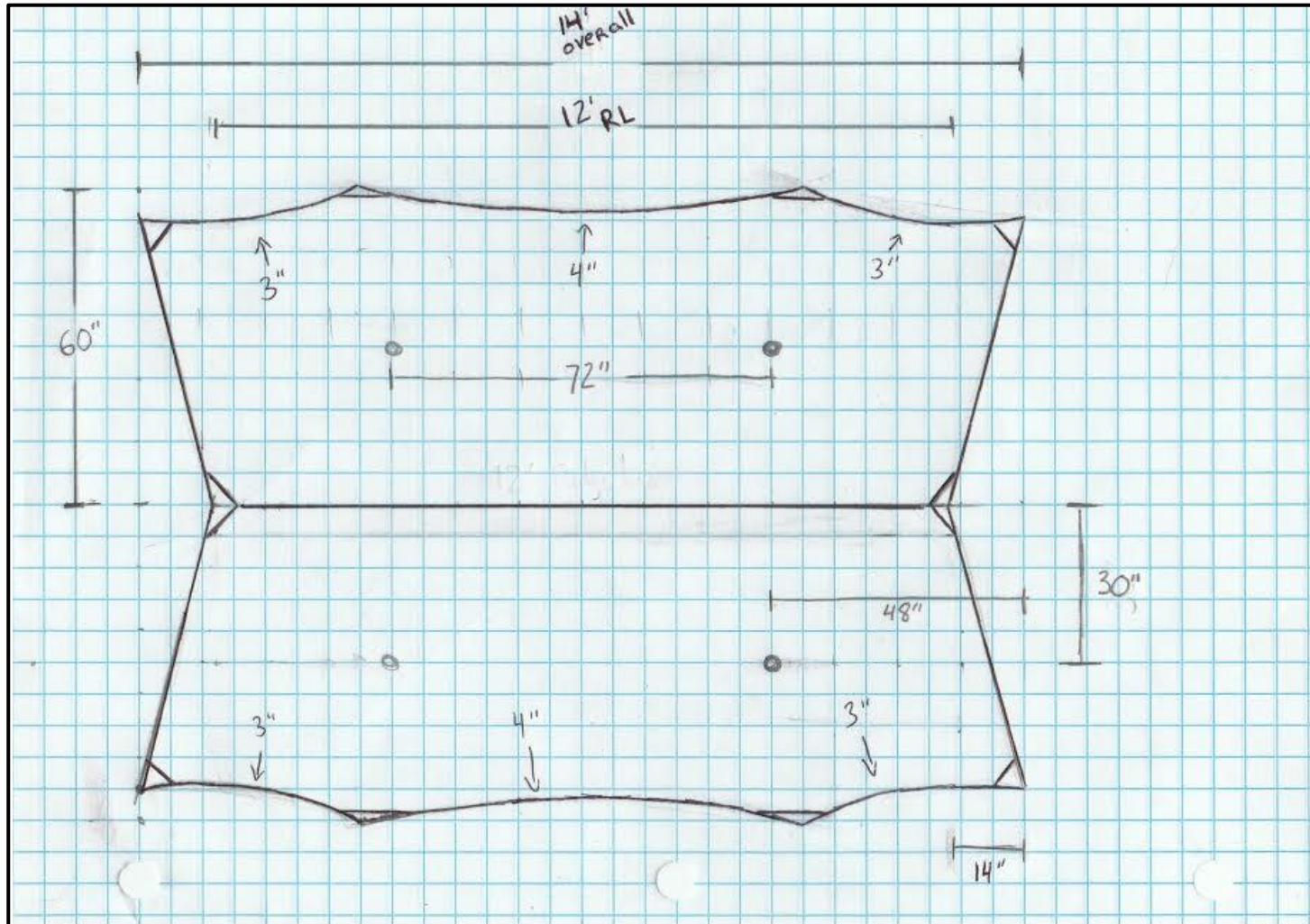


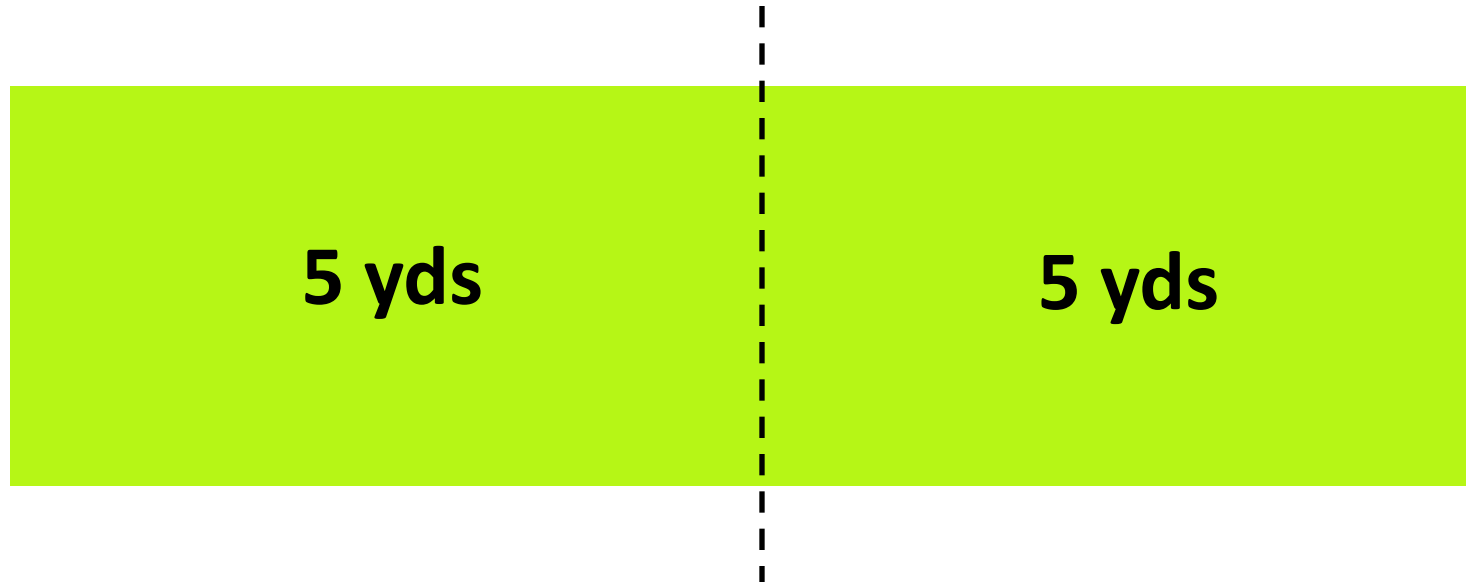
WINTER12 Tarp Instructions

Ripstop by the Roll[®] 

Top Down View – Winter12 Tarp

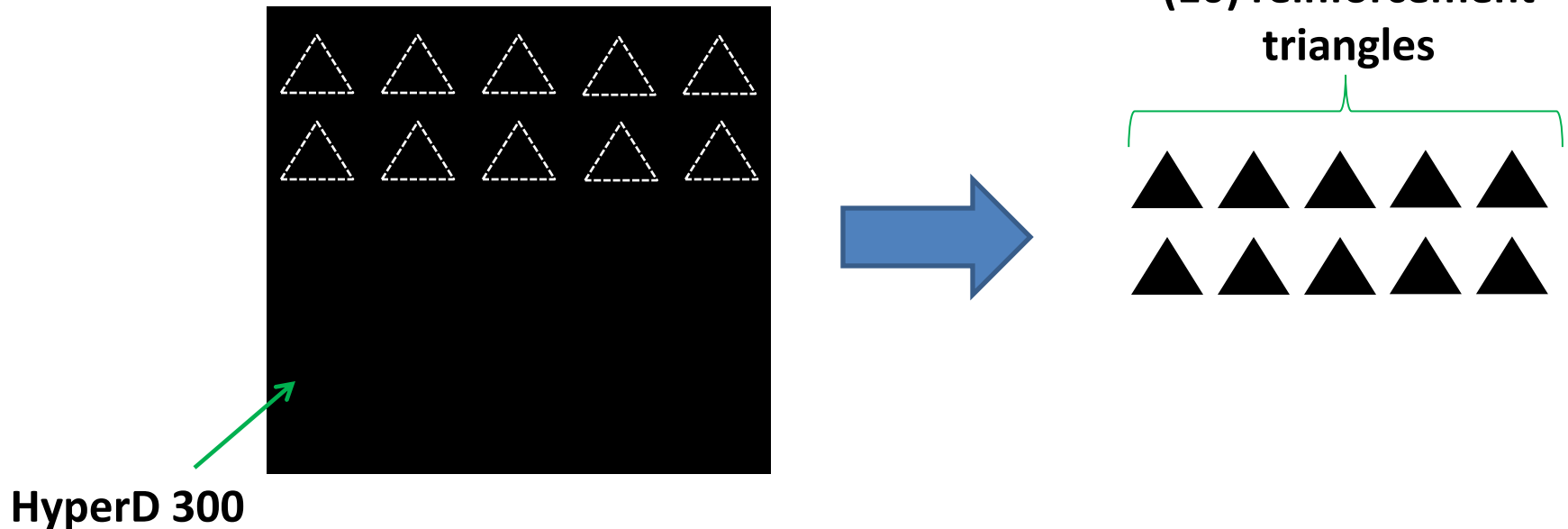


Step 1: Cut fabric



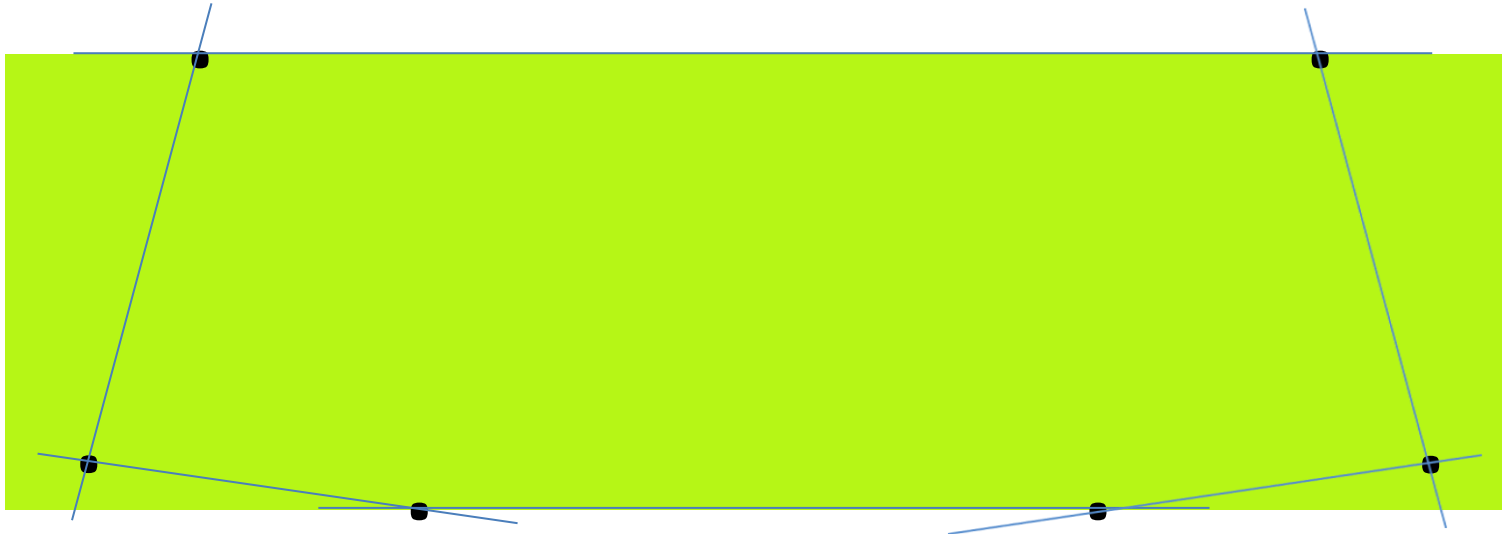
- Measure and cut 2 x 5 yd rectangular sections of tarp fabric
- **DO NOT** simply cut fabric in half as original piece will not be exactly 10 yds.

Step 2: Cut out reinforcement panels



- Cut out (10) reinforcement triangles (other shapes could be used) from HyperD 300 section.
- There is plenty of HyperD 300 provided, so if you mess up, no big deal.
- Recommended triangle size – 2.5" x 2.5"

Step 3a: Cat-cuts



- Mark tie-out points on 5 yd piece of fabric (6 total)
- Using straightedge, draw lines connecting the points

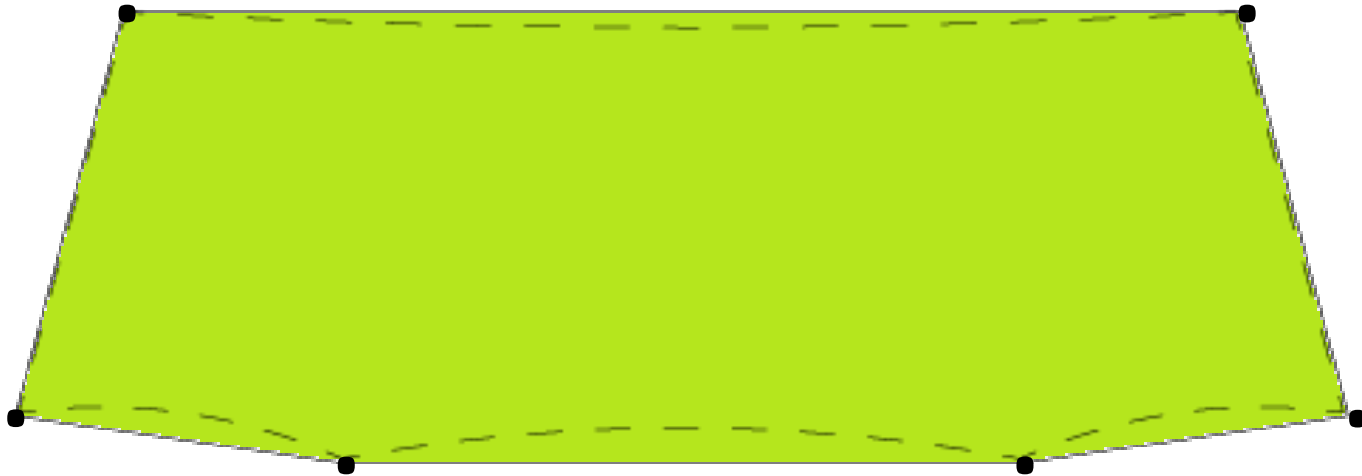
Step 3b: Cat-cuts



- Cut away waste, leaving straight edge tarp panel with no cat-cuts
- **NOTE** – save waste for use as either stuff sack material or practice scrap

NOTE: If using Silpoly, cat-cuts are not strictly necessary and could be omitted. If not doing cat-cuts, skip ahead to **Step 4**.

Step 3c: Cat-cuts



- Trace out cat curves between tie-out points
- Suggested:
 - Use [Xtrekker's Cat-Curve Generator](#) to give curve points
 - Make template from another piece of fabric before marking main tarp fabric

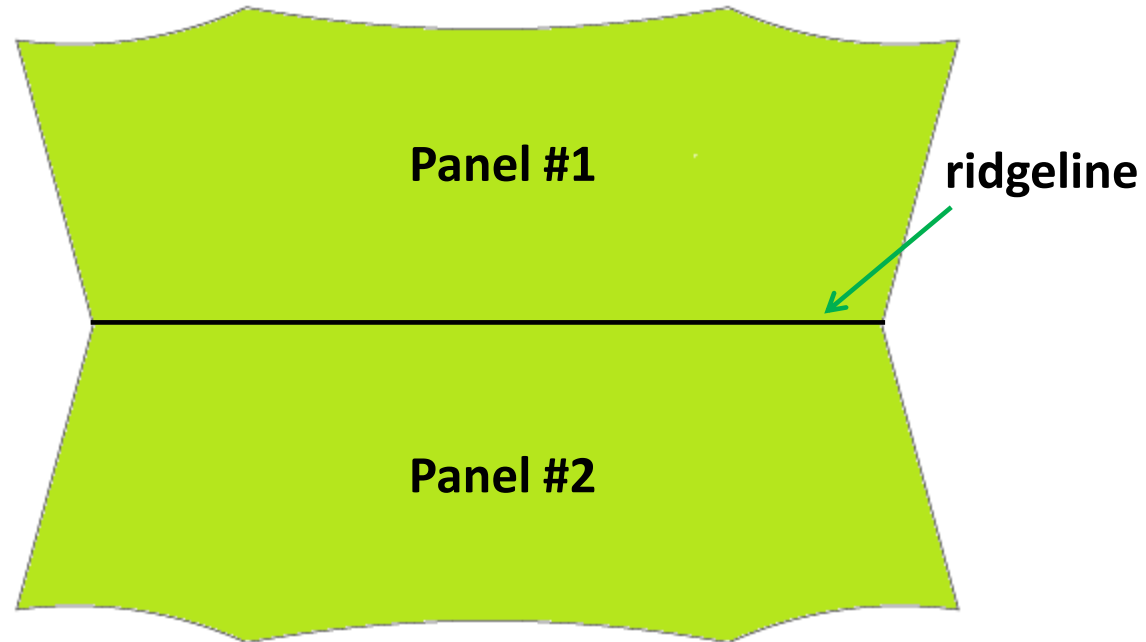
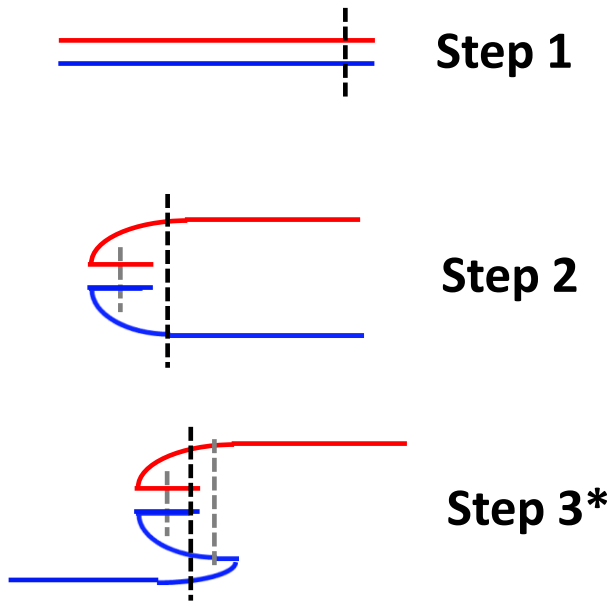
Step 3d: Cat-cuts



- Carefully cut out all curves
- You now have $\frac{1}{2}$ of the cat-cut tarp
- Repeat with other 5 yd panel to get second half

Step 4: Sew Ridgeline

Figure 1



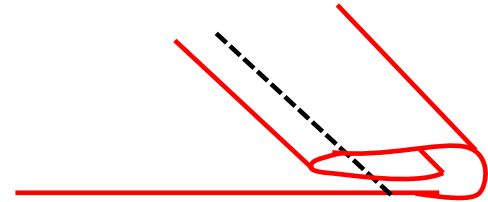
- Join the two panels along ridgeline using a flat-felled/French seam hybrid
- See **Figure 1** above for details of seam structure
- **NOTE:** based on our experience, **Step 3** is optional.

Step 5: Hem perimeter

Figure 2 – Finished Example

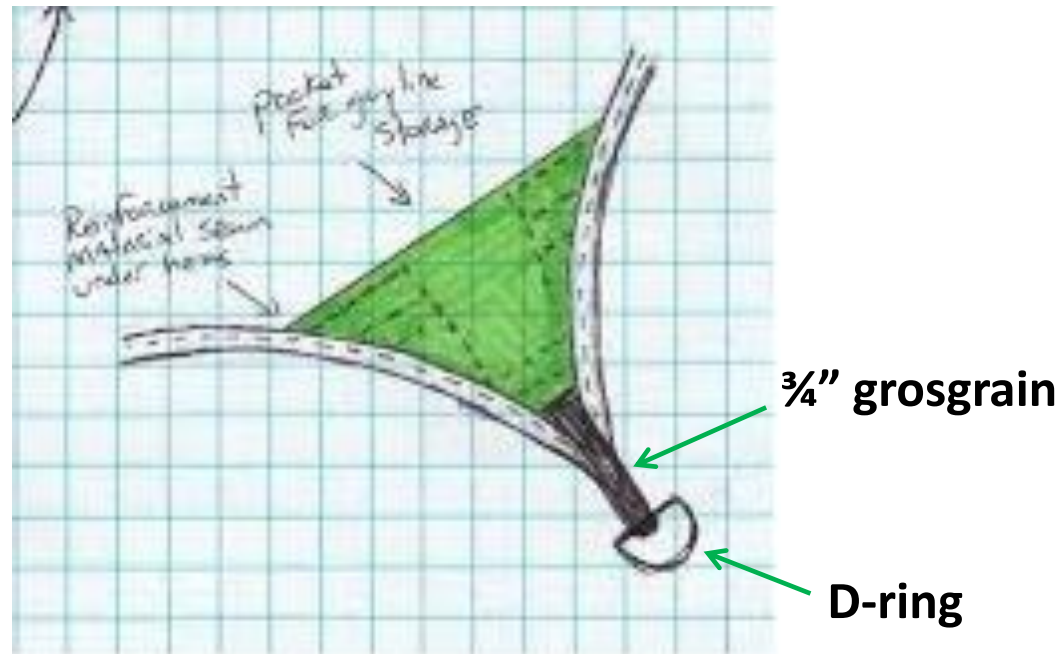


Figure 3 – Rolled hem



- Roll hem the entire perimeter of tarp
- Insert reinforcement pieces at all tie-out points and hide edges within rolled hem
- See **Figure 2** for finished example
- See **Figure 3** for rolled hem stitch detail

Step 6: Finish Reinforcement and Tie-Outs



- Finish attaching reinforcement pieces to main body of tarp as shown above (**green** is reinforcement).
- **Optional** – Arrange stitching to leave a small pocket for guyline storage.
- Make tie-outs with 4-6" pieces of $\frac{3}{4}$ " grosgrain and a D-ring (repeat for all ten tie-out locations)

Step 7: Adding Panel Pulls

OPTIONAL...

COMING SOON

Step 8: Seam Sealing



- Using 100% silicone sealant, seal inside of the tarp ridgeline and panel pulls if added.
- Hang tarp inside and allow to cure for ~24 hours
- Suggested sealants: Silnet or GE Silicone II caulk



YOU'RE DONE!



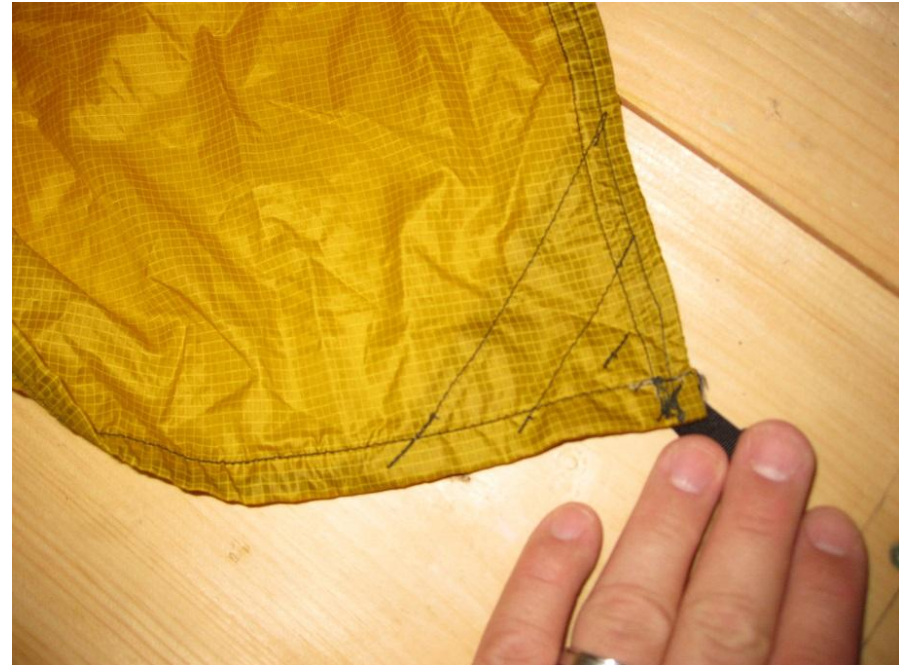
ENJOY YOUR NEW WINTER12

Appendix A – Additional Tie-Out Detail

Back (left) and Face (right) of
ground tie-out



Face side stitch detail



Appendix

**MORE CONTENT
COMING SOON**