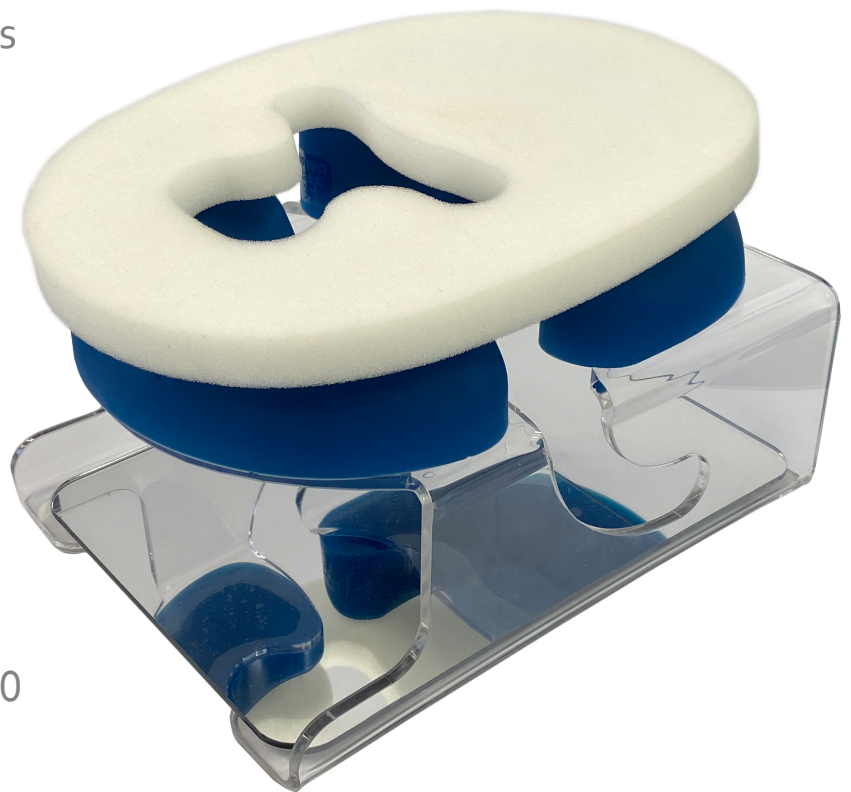


# Clearview Prone Headrest

The Trulife Clearview Prone Headrest raises and supports the head while offering maximum pressure relief.

## Features

- A clear acrylic base and mirror to allow the patient's eyes to be monitored
- Chin and forehead silicone positioners that can be adjusted to suit the patient's head
- Swept cut-outs in the base allows room for tracheal intubation
- Dimensions: 300 x 230 x 200



**CVP01** Clearview Prone Headrest  
**CVF01** Clearview Foam Pad – pack of 5