

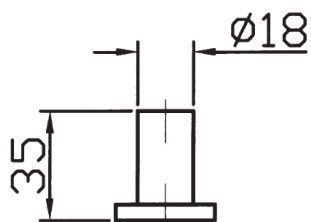
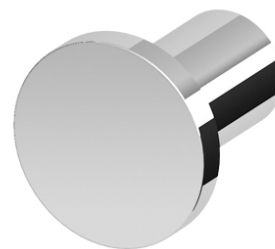
Pan Hook

ZAC650

Finish: Chrome

Finishes available:

Matte Black, Brushed Nickel



The Pan robe hook is Zucchetti's interpretation of the basic cylinder type accessory. Pan begins with classic archetypes and goes on to develop completely original aesthetics and new types of accessory. Designers Roberto and Ludovica Palomba have concentrated their attention on the joint between the vertical and horizontal elements.

The Pan robe hook has been crafted from solid brass.



*Conditions apply.