

# novofORM

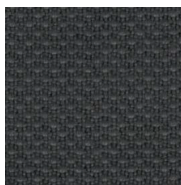
MATERIAL GUIDE | TEXTILES | SALVAGE



## Colours



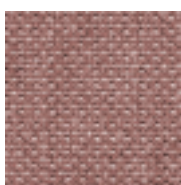
Silver grey



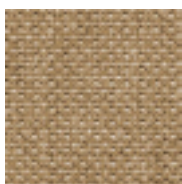
Phantom grey



Sweet vanilla



Dusty rose



Golden sand



Slate blue

Other colours available on request

## Precautions

To prevent color fading and seam weakening, avoid exposing your furniture to direct sunlight. This furniture is intended for indoor use only.

## Cleaning instructions

Vacuum clean frequently using a furniture nozzle. Remove stains as soon as they occur. Do not use strong cleaning or bleaching agents. Machine washable at 30°

## Media kit

Photos and press material can be downloaded from [imagebank.novoform.com](http://imagebank.novoform.com)

## Product name

SALVAGE

Made from 100% post-consumer recycled plastic removed from the natural environment.

## Composition

100% recycled polyester, 430 g/m<sup>2</sup>  
650 kg of plastic recycled per 1000 m fabric

## Flame retardant

EU: EN 1021/1 and EN 1021/2  
UK: BS 5852: Pass upon requirement  
US: Ca Tb 117-2013: Pass

## Colour fastness to light

5\* (ISO 105-B02:2014)

## Colour fastness to rubbing

Dry 4-5\*, wet 4-5\* (DIN EN ISO 105-X12:2016-11)

## Resistance to seam slippage

Warp (mm) 3, weft (mm) 3

## Abrasion resistance

67.000 rubs (EN ISO 12947-2:2016)  
Martindale wear & abrasion tester 12kPa

## Pilling resistance

4-5\* (EN ISO 12945-2:2000)

## Environment

Global Recycled Standard  
OEKO-TEX® Standard 100  
REACH compliance  
Formaldehyde Free (EN ISO 14184-1:2011)

## Washability

Easy to clean by hand. Vacuum clean frequently using a furniture nozzle. Remove stains as soon as they occur using a cloth, soap and mild water. Do not use strong cleaning or bleaching agents. Machine washable at 30°

\* On scale from 1-5. The higher value the better



STANDARD  
100



# novofORM

MATERIAL GUIDE | TEXTILES | NUBBIO



## Colours



White

Other colours available on request

## Product name

NUBBIO

## Composition

95% polyester, 5% acrylic  
720 g/m<sup>2</sup>

## Flame retardant

EU: EN 1021/1 and EN 1021/2  
UK: BS 5852  
US: Ca Tb 117-2013

## Colour fastness to light

5\* (ISO 105-B02:2014)

## Colour fastness to rubbing

Dry 4-5\*, wet 4-5\* (DIN EN ISO 105-X12:2016-11)

## Resistance to seam slippage

Warp (mm) 2, weft (mm) 3

## Abrasion resistance

79.000 rubs (EN ISO 12947-2:2016)  
Martindale wear & abrasion tester 12kPa

## Pilling resistance

4\* (EN ISO 12945-2:2000)

## Environment

STANDARD 100 by OEKO-TEX®  
REACH compliance  
Formaldehyde Free (EN ISO 14184-1:2011)

## Washability

Easy to clean by hand. Vacuum clean frequently using a furniture nozzle. Remove stains as soon as they occur using a cloth, soap and mild water. Do not use strong cleaning or bleaching agents. Machine washable at 30°

\* On scale from 1-5. The higher value the better



STANDARD  
100



## Precautions

To prevent color fading and seam weakening, avoid exposing your furniture to direct sunlight. This furniture is intended for indoor use only.

## Cleaning instructions

Vacuum clean frequently using a furniture nozzle. Remove stains as soon as they occur. Do not use strong cleaning or bleaching agents. Machine washable at 30°

## Media kit

Photos and press material can be downloaded from [imagebank.novoform.com](http://imagebank.novoform.com)