

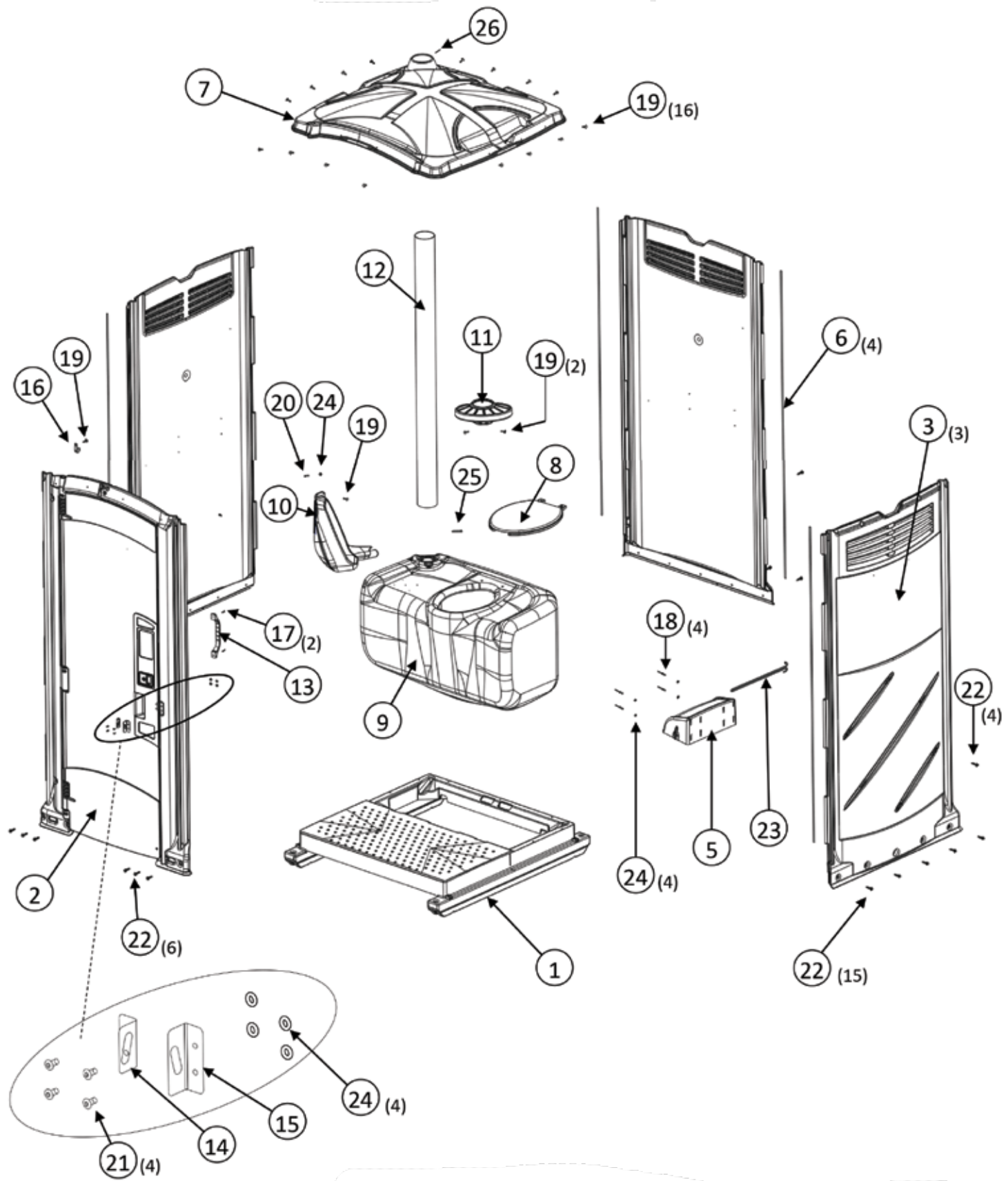


# PARTS CATALOG

VOL. 3.1 MARCH, 2023



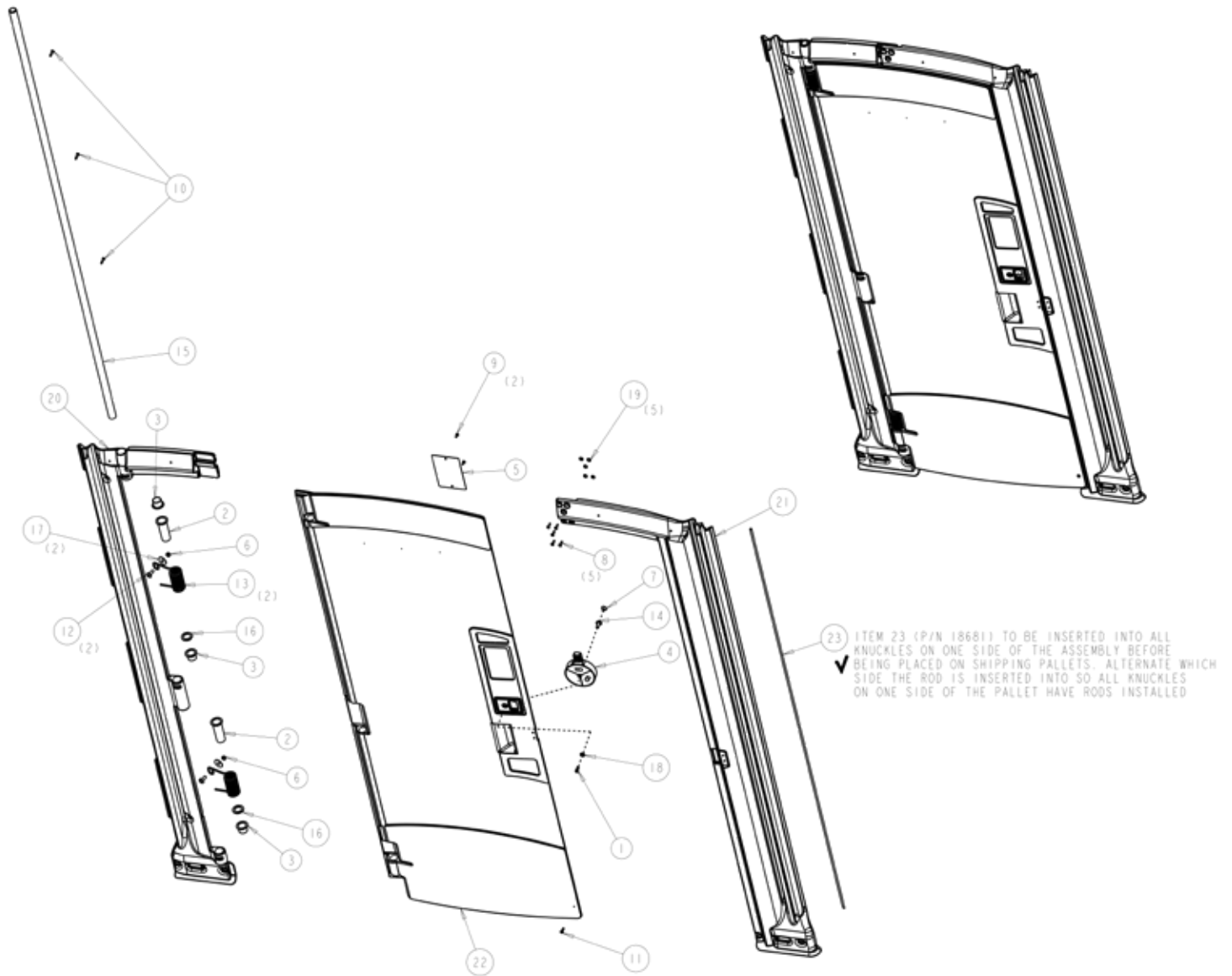
# MAXIM 3000 II | MAJOR ASSEMBLY



## MAXIM 3000 II | MAJOR ASSEMBLY PARTS

ITEM #	PART #	QPU	DESCRIPTION	COMMENT
1	10034	1	BASE ASSY- IMPACT SOLID FLOOR	
	10033		BASE ASSY- IMPACT GRID FLOOR	
	10032		COVER- FLOOR IMPACT BASE	20 1/2 X 40-1/2 (8 #22727 & 8 #11360)
2	SEE CHART	1	FRONT ASSY- MX3	
3	SEE CHART	3	PANEL- MX3	
	24171	1	HDWE- MX3 ROUND VP	
5	22209	1	HOOD- PAPERGRD 3 ROLL DGRY	
6	18681	4	ROD- FIBERGLASS 72	
7	22191	1	ROOF- MAXIM 3000 II NATURAL	
8	14959	1	SEAT- ELONG MX2/MX3/TRS/HT BLK	
9	24173	1	TANK- MX3 II DGRY ROUND VP	
10	22193	1	URINAL- MAXIM 3000 II DGRY	
11	23832	1	SHELF- FOR 4" VENT PIPE DGRY	
12	14133	1	VENT PIPE- 4 X 63 DGRY	
13	16807	1	HANDLE- PLASTIC HOVER	
14	13197	1	HASP- 3/16 RIVET HOLE DOOR	
15	13199	1	HASP- 3/16 RIVET HOLE FACING	
16	10891	1	HOOK- FLAT COAT STNLS	
17	17030	2	RIVET- AVDEL BLACK	
18	18543	6	RIVET- 3/16 T PEEL	
19	22199	20	RIVET- 3/16 TRIFIX ALUM LF	
20	11024	1	RIVET- #610 AAP	
21	11270	4	RIVET- #68 STNLS	
22	13860	25	SCREW- #14 X 1- 1/2 W/WSH GOLD	
23	22310	1	SPINDLE- PRGRD II 3 ROLL METAL	
24	11315	9	WASHER- 3/16 RIVET STNLS	
25	18098	1	SCREW- #10 X 2 Pn PH TAP	VENT PIPE TO TANK
	24172		INSTRUCTION- MX3 II ROUND VP	SEE WEBSITE

# MAXIM 3000 II | FRONT ASSEMBLY



## MAXIM 3000 II | FRONT ASSEMBLY PARTS

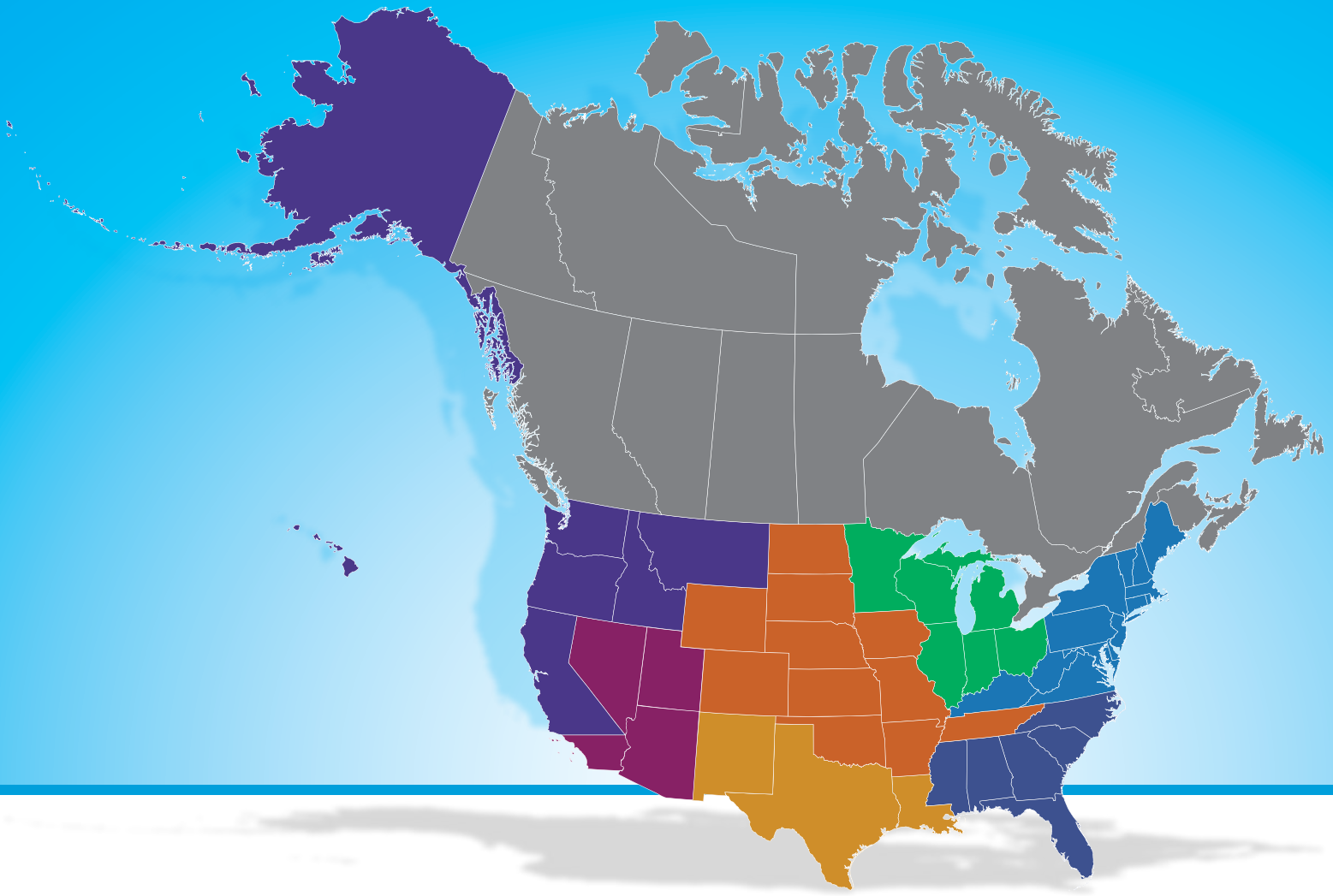
ITEM #	PART #	QPU	DESCRIPTION	COMMENT
	SEE CHART		FRONT ASSY- MX3	
1	24229	1	BOLT- 1/4-20 X 3/4 SLOT PATCH	
2	22190	2	BUSHING- MAXIM 3000 II DR SPRG	
3	22196	3	BUSHING- MAXIM 3000 II DR TUBE	
4	22574	1	LATCH- ROTARY HANDLE W/INDICTR	
5	14474	1	MIRROR- 4 X 6 STNLS STEEL	
6	20840	2	NUT- 5/16-18 NYLOC STNLS	
7	14762	1	RIVET- 3/16 RATCHETING	
8	22207	5	RIVET- #68 AAP POP	
9	11027	2	RIVET- #66 ALUM	
10	17436	3	RIVET- AVDEL SILVER	
11	22476	1	SCREW- #10 X 1" PHPN TAP PLTD	
12	16808	2	SCREW- 5/16- 18 X 7/8 TORX	
13	22197	2	SPRING- MAXIM 3000 II DR TORS	
14	14764	1	T- NUT- 1/4- 20	
15	22198	1	TUBE- MAXIM 3000 II DOOR 1X77	
16	17130	2	WASHER- 1IN ID NYLON	
17	22206	2	WASHER- 5/16 ID FENDER STNLS	
18	12382	1	WASHER- 1/4 FLAT STNLS	
19	11315	5	WASHER- 3/16 RIVET STNLS	
20			FACING- MX3 HINGE	
21		1	FACING- MX3 HASP	
22		1	DOOR- MX3	
23	18681	2	ROD- FIBERGLASS 72	

### MAXIM 3000 II | COMPLETE FRONT ASSEMBLY

PART #	DESCRIPTION
22187	FRONT ASSY- MAXIM 3000 II DGRY
22180	FRONT ASSY- MAXIM 3000 II FRST
22181	FRONT ASSY- MAXIM 3000 II GRNT
22268	FRONT ASSY- MAXIM 3000 II PINK
22182	FRONT ASSY- MAXIM 3000 II RBLU
22183	FRONT ASSY- MAXIM 3000 II SAND
22184	FRONT ASSY- MAXIM 3000 II TEAL

### MAXIM 3000 II | PANEL

PART #	DESCRIPTION
22188	PANEL- MAXIM 3000 II DGRY
22175	PANEL- MAXIM 3000 II FRST
22176	PANEL- MAXIM 3000 II GRNT
22267	PANEL- MAXIM 3000 II PINK
22177	PANEL- MAXIM 3000 II RBLU
22178	PANEL- MAXIM 3000 II SAND
22179	PANEL- MAXIM 3000 II TEAL



### NORTHWEST

**John Sprenger**  
763-519-6544  
johns@satelliteindustries.com



### GREAT LAKES

**Paul Jongert**  
763-519-6546  
paulj@satelliteindustries.com



### SOUTHEAST

**Lance Branan**  
763-519-6541  
lanceb@satelliteindustries.com



### SOUTHWEST

**Tim White**  
763-519-6543  
timw@satelliteindustries.com



### SOUTH CENTRAL

**Ryan Foley**  
763-519-6526  
ryanf@satelliteindustries.com



### CANADA

**Jerry Graves**  
763-519-6524  
jerryg@satelliteindustries.com



### MIDWEST

**Jeff Sprenger**  
763-519-6527  
jsprenger@satelliteindustries.com



### NORTHEAST

**Joshua Carmichael**  
574-350-2162  
joshuac@satelliteindustries.com



### INTERNATIONAL

**Michael Pederson**  
763-551-7237  
mikep@satelliteindustries.com

