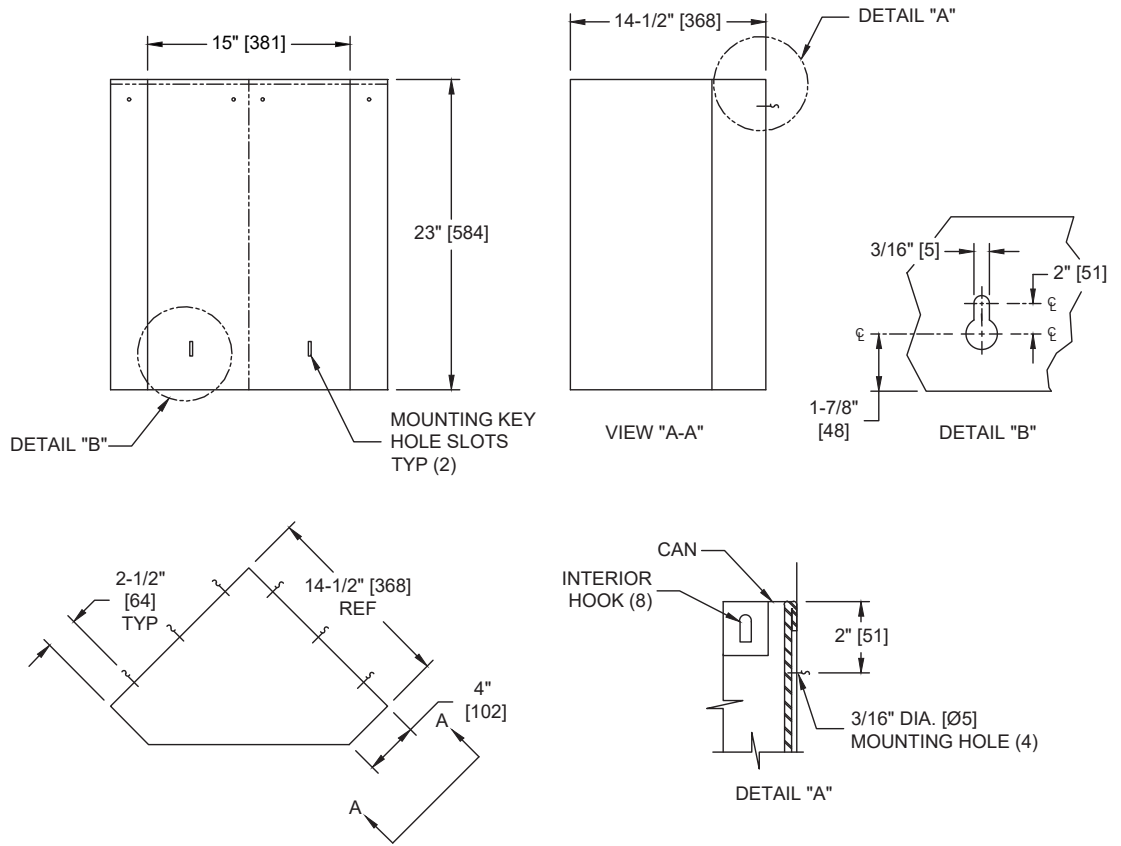


Waste Receptacle, Corner-type (16 gal.) – Surface Mounted

Waste Receptacles

MasterFormat Section 10 28 13



Scan for Information



SUSTAINABILITY/LEED

MR 4.1 (1) MR 6 (1) EQ 4.2 (1)
MR 4.2 (1) EQ 4.1 (1) EQ 4.4 (1)

NOTE:
ALL DIM'S INCH [MM]
ILLUSTRATION FOR REF ONLY AND NTS

PRODUCT OVERVIEW

Holds 2.13 cu. ft. (.06m³) or 16 gal (60 liters) of dry/solids waste. Receptacle includes eight (8) interior hooks for hanging a disposable bag (by others). Receptacle mounted to wall through 'key hole' slots on back of unit and is theft resistant after installation of concealed locking screws. Unit is emptied by removing disposable bag (supplied by others) and emptying into appropriate bulk collection container. Unit shall be 22 gauge type 304 stainless steel alloy 18-8 with satin finish and be protected during shipment with a PVC film easily removable after installation.

KEY FEATURES & SPECIFICATIONS

- Corner Type Waste Receptacle
- Includes eight (8) interior hooks to hold disposable bag (by others)
- Type 304 Stainless Steel - Satin Finish
- Screw Mounted to Wall
- Surface Mounted
- 16.0 Gal. (60 L) Waste Capacity

OPERATION & MAINTENANCE

User deposits waste material. Maintenance schedule determines trash removal cycle. Unit is emptied by removing disposable bag (supplied by others) and emptying into appropriate bulk collection container.

TECHNICAL INFORMATION / PRODUCT PROPERTIES

Property	Value
Dimensions	15" [381] W x 23" [584] H x 14-1/2" [368] D
Construction	Type 304 Stainless Steel - Satin Finish
Mounting	Wall Mounted
Capacity	19.0 Gal. (73.0 L) Waste Capacity

INSTALLATION

For general utility, mount the receptacle 16" [406] Above Finished Floor (AFF) from bottom of unit. Hang unit on pre-installed two (2) screws (by others) on wall through the mounting 'key hole' slots on bottom of unit. Install and fasten four (4) theft-resistant screws (by others) to wall through top of receptacle. For compliance with 2010 ADA Accessibility Standards, install unit with top edge no higher than 48" [1219] Above Finished Floor (AFF).

OPTIONS

N/A

WARRANTY

One (1) Year from date of Invoice