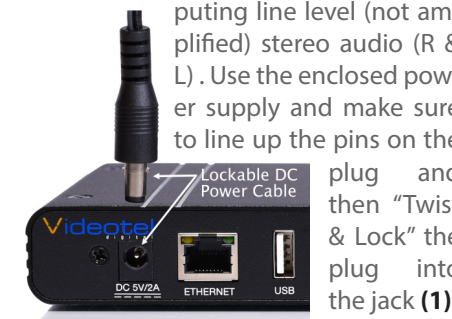


What is in the box

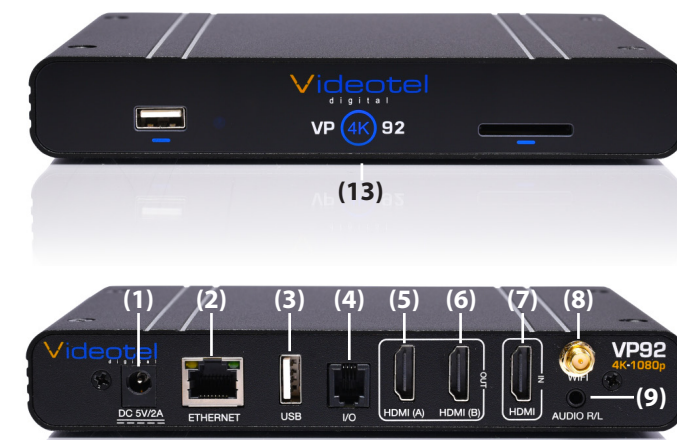
- 1 - VP92 Video Player
- 1 - 32-256 GB Micro SD (installed)
- 1 - Remote Control
- 1 - 5' HDMI Cable
- 1 - USB Power Supply
- 1 - 5' USB Power Cable
- 1 - 5' 3.5mm to RCA A/V Cable
- 1 - Wifi Antenna
- 4 - Mounting Screws

Connections

The VP92 is capable out outputting video either (A or B) (5 & 6) or both HDMI out jacks. The I/O port (4) is used for RS232/TTL communication and connecting to our line of interactive solutions including PUSH, MOVE, SENSE, WAVE, RFID, SCAN, TAP and ELEVATE. The USB on the front or back (3) can be used for a keyboard and/or mouse. Use the enclosed Wifi antenna and attach to the threaded plug (8) if you plan to use Wifi. The Micro SD is inside of the player for storing files when using FTP/LAN/URL. The audio jack (9) is used for outputting line level (not amplified) stereo audio (R & L). Use the enclosed power supply and make sure to line up the pins on the



Videotel Digital
Chula Vista, California
(619) 670-4412
www.videoteldigital.com



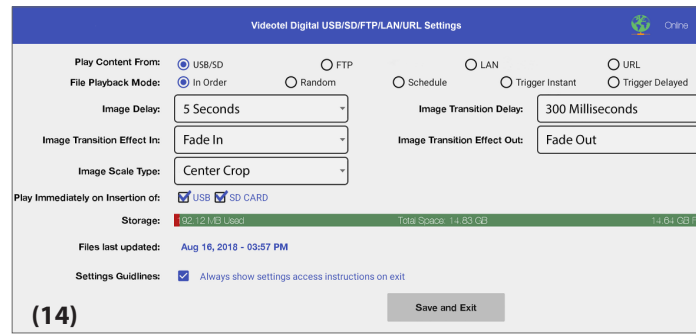
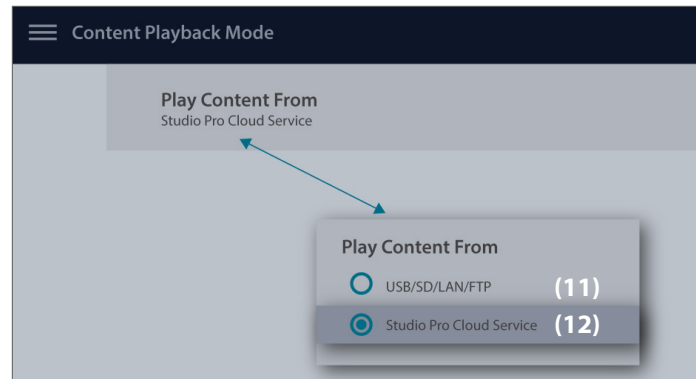
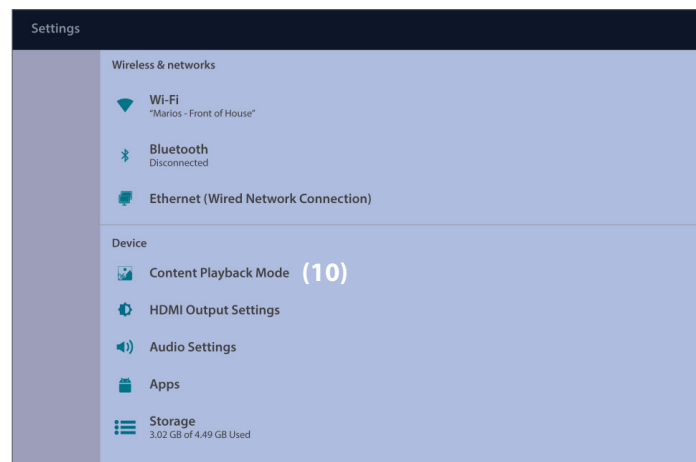
Content Playback Options

The VP92 has 2 main categories for playing content. The 1st allows you to play content from SD, USB, LAN, FTP or a URL. With these options you can loop content, schedule content and connect any of our interactive device. You can also control the player through RS232 or TTL using the I/O port. The 2nd allows you to update content using our Cloud Service. To switch between the 2 categories, press the Settings button on the remote and then select the "Content Playback Mode" option (10).

Once the Playback Mode options are listed, select an option. To play from USB, SD, FTP, LAN or URL select the "USD/SD/LAN/FTP" option (11), then press the "Return/Last" button (12) 2 times. To play from Studio Pro or Studio Web Cloud Services, select the "Studio Pro Cloud Service" option (12) (if the option does not auto load, press the "Return/Last" button).

Access the USB/SD/FTP/LAN/ URL Settings

To access the various content playback options (random, schedule or interactive) simply select the USB/SD/LAN/FTP option from the settings button and then press the HOME button on the remote, or remove the SD/USB. The screen below will appear and you will then just press the SELECT button on the remote and the



screen above will appear. Once your content is playing you can access the settings again by removing the SD/USB or by clicking the SETTINGS ICON in the upper right corner of the screen when using a mouse or "mouse mode" on the remote. **Note:** If the "Settings Guidelines" (14) is checked an animated on screen display will show settings access instructions each time the settings are saved.

Play Content From USB/SD

The VP92 is preset to play from USB or SD, which will auto power on and auto loop any video, audio and/or photos loaded on the SD or USB drive. Once you connect the player to a TV or monitor, simply load your video, audio and/or photo files onto any SD Card or USB drive and insert it into the player. The order in which the files are sorted on the card is the order in which they play. Your player will start play and continue to auto loop until power is turned off. Once power is restored the VP92 will auto start and auto play without any manual interaction.

Note: There is no need to select the USB or SD CARD option (15) if the "Play Immediately on Insertion of USB - SD CARD" is checked (16). If you plan to play content from FTP, LAN or URL and you **DO NOT** wish to have the playback interrupted by the insertion of a USB or SD then un-check these boxes.

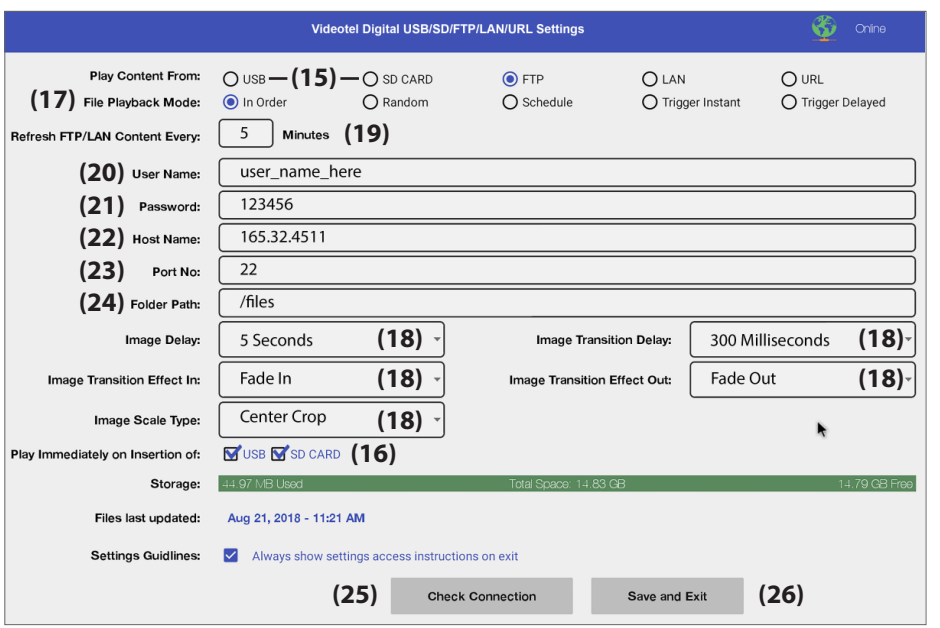
Play Content From FTP

FTP is an acronym for File Transfer Protocol. The VP92 will basically download and update files according to what content is loaded in specific folder. Servers that have FTP available are very common. Your company website can be used or you can set up a basic FTP with a company like [Google](#), [AWS](#) and [Azure](#).

The VP92 will scan the FTP folder you designate at an interval (19) of your choosing (we recommend a refresh time of 5 minutes to 180 minutes). If the VP92 detects new files on the server, those files will be downloaded and begin looping (once fully transferred). If no new files were added to the server but some files were deleted, the deleted files will be removed from the VP92. If new files were added and other files were deleted, the VP92 will download and loop all new files completely BEFORE deleting the removed files.

VP92 Settings and Options

Refresh FTP/LAN Content Every: (19) Enter the number (in minutes) that you want the VP92 to check your FTP server for updates
User Name: (20) This will be the user name you would use to access your FTP server
Password: (21) This will be the password you use to access your FTP server



Host Name: (22) Enter the IP Address or url. **Tip:** If you are using a website, the url will usually look like this - ftp.yourwebsitename.com
Port No: (23) The most common port numbers will be 21 (unsecured) or 22 (secured)
Folder Path: (24) Enter the name of the folder where your files will be located

Once you have these settings entered and you have an internet connection, click the "Check Connection" button (25) on the bottom. The VP92 will check your settings and attempt to connect to the folder indicated. The most common connection issues are: #1) incorrect port #2) the folder path must include any and all sub folders and begin with a /

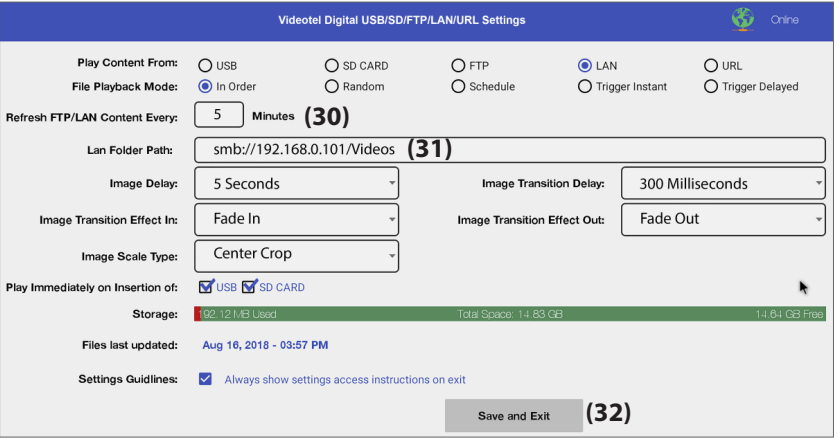
Once the VP92 reports a successful connection we suggest loading some files in the FTP folder on your server before clicking the "Save and Exit" button (26). Once "Save and Exist" is clicked the VP92 will begin downloading files from your FTP folder. Once the 1st file is downloaded, it will begin looping while the remaining files are downloaded in the background.

Play Content From LAN

LAN is an acronym for Local Area Network, which is typically a closed network within a single building or institution. The VP92 will download and update files according to what content is loaded in specific folder on your LAN. The main requirement for the VP92 to access the folder is that the path to the folder must be smb and "open" without requiring a user name or password. The VP92 will scan the LAN folder you designate at an interval (30) of your choosing (we recommend a refresh time of 5 minutes to 180 minutes). If the VP92 detects new files in the folder, those files will be transferred and begin looping, once fully downloaded. If no new files were added to the server but some files were deleted, the deleted files will be removed from the VP92. If new files were added and other files were deleted, the VP92 will download and loop all new files completely BEFORE deleting the removed files.

Note: Make sure to include the LAN IP address and then include all the folders and sub folder names separated by a forward slash / (31)

Once you have entered the LAN Path, loaded some files in the designated folder and you have an internet connection, click the "Save and Exit" button (32) on the bottom. The VP92 will check your path and attempt to connect to the folder indicated. If a connection can not be established and error message will appear. Once the VP92 detects a successful connection it will begin downloading files from your LAN folder. Once the 1st file is downloaded, it will begin looping while the remaining files are downloaded in the background.

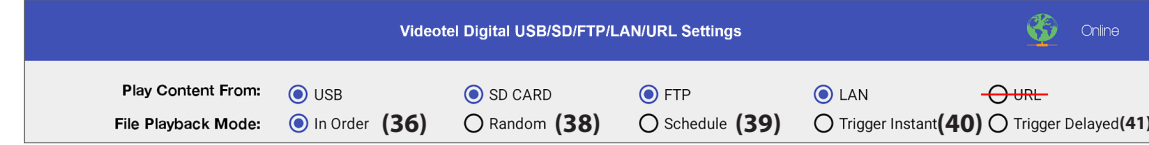


Play Content From URL

In the settings menu, simply select the URL option and enter the URL (33) of the video, photo or audio file you wish to play. Next select a "Refresh Day" (34) (any day of the week or daily) and "Refresh Hour" (35). In the example to the right, once the settings are saved the VP92 will download the file indicated. At 11pm everyday the VP92 will download (in the background) the file located on the same URL and compare the files. If the file is different from the current content playing the new file will begin playing and the old file will be deleted. Once the player is set up it will simply loop what ever file is loaded onto the URL. Example: 10 VP92's are connected to 10 screens that are playing a single video containing 5 perfume ads. These ads need to be updated once a month. At the beginning of the month the administrator would log into your web site and replace the file named "perfume_counter_ads.mp4". The video of ads is different but the name is the same. When the VP92 downloads the same video file "name" it will see if the content is different. If it is the, new video will begin to play and loop. **Note:** Make sure the URL you enter is a true video file and not a URL of a web page that "contains" a video.

Playback Modes (In Order and Random)

Below is a brief description of what each File Playback Mode does. All 5 modes can be used when playing from USB, SD, FTP or LAN.



In Order: (36) All the content loaded either on an SD/USB or in a LAN/FTP folder will be played in alpha numeric order. In the example below (37) the first file to be played would be "Adams.mpeg", then "Break Dancer.mov" and lastly, "Costa Rica.mov". Once the last file has played, the VP92 will automatically begin playing the first file and continue looping all loaded files endlessly.
Random: (38) This mode functions the same as "In Order" except all the files loaded on the SD/USB or LAN/FTP folder will loop randomly.

Note: Both of these modes can be used with any combination of videos, photos and/or audio files. If you desire to mix photos with videos and use transitions, the transitions only work on photos and not videos. Also, make sure ONLY your desired files are loaded on the SD/USB or LAN/FTP folder. The VP92 will play all content on the device/folder the regardless if there are files in sub-folders.

Name	Date Modified	Size	Kind
Adams.mpeg	Nov 6, 2014 at 2:16 PM	71.9 MB	MPEG movie
Break Dancer.mov	Oct 14, 2014 at 12:45 PM	26.2 MB	QT movie
Costa Rica.mov	Mar 23, 2018 at 3:20 PM	405.8 MB	QT movie

Playback Modes (Interactive-Instant/Delayed)

These modes would be used if you have an application that requires interactive video triggering using one of our solutions (45) (PUSH, MOVE, WAVE, SENSE and ELEVATE). For example: Lets say your application requires a looping video and 3 mechanical buttons that each play a specific video (photo or audio) file when pressed. First you would load 4 videos on your SD/USB or FTP/LAN folder (46). These files would need to be labeled 000.mov (mov, mp4, jpg, mp3, etc.), 001.mov, 002.mov and 003.mov (47). The video file 000.mov represents the video that will loop endlessly until either button 1 (001.mov will play), 2 (002.mov will play) or 3 (003.mov will play) is pressed.

Name	Date Modified	Size	Kind
000.mov	Dec 30, 2013 at 5:10 PM	242.2 MB	QT movie
001.mov	May 21, 2014 at 2:58 PM	76 MB	QT movie
002.mov	May 21, 2014 at 3:08 PM	83.6 MB	QT movie
003.mov	May 21, 2014 at 3:18 PM	80 MB	QT movie

Instant mode (40) will trigger a different video even if the first video has not finished playing. For example: If 3 buttons are available and button 2 is pressed, video 002.mov will begin playing. If button 3 is pressed, then video 002.mov will stop and video 003.mov will instantly play.
Delayed mode (41) will ignore any additional button or sensor triggers until the 1st video is finished playing. For example: If 3 buttons are available and button 2 is pressed, video 002.mov will begin playing, play once and then loop the 000.mov video again. If button 3 is pressed during video 002.mov, the VP90 will ignore all requests for a new video until the 1st selected video is done playing.

Note: The file names MUST start with 3 numbers but you can add additional verbiage after the first 3.
 For example:
 000 - Main Looping Video.mp4
 001 - Learn More About Our Museum.mov
 002.mpeg
 003 - The Music Of The Wascanegi People.mp3

Playback Modes (Scheduling) (39)

This mode would be used if you wish to play specific videos at different times of the day and/or week. The VP92 will read a text file (48) on your USB/SD or FTP/LAN folder (49) that you create and can edit at any time. The text file must be placed on the same USB/SB or LAN/FTP Folder that contains the video, photo and/or audio files.

For example if you wanted to play a breakfast menu from 9am to 11am, a lunch menu from 11am to 3pm and a dinner menu from 3pm to 11pm you would use this scheduling mode. Once scheduling mode is selected you simply need to create a text file (48) with start and stop times and load it on the same SD/USB or LAN/FTP Folder as your video files (49). A sample play list can be downloaded from our web site or can be manually typed from the example on the next page (48).



Push Move Wave Elevate Sense

[MOVIE-AUTOFILE] (50) will be your looping attract screen or default video. Even if you plan to play content all day, everyday you must enter a file and load it on the SD/USB or FTP/LAN Folder. The "Jennys Logo.jpg" will loop whenever no other start/stop time is active.

[DAY_TO_PLAY] Represents what day of the week you wish to play the indicated file. Days of the week must be entered as follows MON TUE WED THU FRI SAT (51) SUN. If you wish to play the content everyday, then enter ALL (52).
 • You can input an unlimited number of stop and start times and the scheduler works off of a 7 day calendar.

Note: If you wish to simply loop files in a specific order, you do not need to use scheduling (please refer to page 3 "Play Modes (In Order) (36)).

Tip: The text file must be called playlist.txt (48).

Name	Date Modified
Breakfast Menu.mov	Dec 30, 2013 at 5:10 PM
closing 5 min.mov	May 21, 2014 at 2:58 PM
Dinner Menu.mov	May 21, 2014 at 3:18 PM
Jennys Logo.jpg	May 23, 2016 at 2:24 PM
Lunch Menu.mov	May 21, 2014 at 3:08 PM
Sat Lunch Menu.mov	Dec 30, 2013 at 5:10 PM
playlist.txt	Jul 31, 2018 at 3:06 PM

Image Settings
 The VP92 has several options for creating transitions when playing photos/images from SD, USB, LAN or FTP. These settings do not apply to creating transitions between videos or videos to photos... only photo to photo.

- Image Delay: (60)** The time between switching from one image to the next.
- Image Transition Delay: (61)** The amount of time that elapses from the start of the transition to the end.

Image Delay:	1 Second	200 Milliseconds
Image Transition Effect In:	3 Seconds	300 Milliseconds
Image Transition Effect Out:	5 Seconds (60)	400 Milliseconds
Image Scale Type:	7 Seconds	500 Milliseconds
	10 Seconds	600 Milliseconds
	30 Seconds	700 Milliseconds
	1 Minute	800 Milliseconds
	2 Minutes	900 Milliseconds
	3 Minutes	1000 Milliseconds
	4 Minutes	1500 Milliseconds
	5 Minutes	

Image Transition Effect In and Out: Chose from a variety of transitions including Fade In/ Out, Rotate and Slide In/Out. You can choose a different transition when bringing the new image in and taking the image out.

Image scale type: While it is best to use images that match your screen size (If your screen is 1920x1080, make the image a proportional size ex: 1920x1080 or 2880x1620) the VP90 can scale your images as well.

- Center Crop:** Your image will be centered and if the image is larger then the screen, the edges will be cropped.
- Fit Center: (62)** If your image is larger then the screen then the horizontal or vertical portion of the image will be adjusted to fit which would leave black bars on the sides that are smaller then the screen.
- Fit XY:** If your image is larger or smaller then the screen then the image will be adjusted (Squeezed or Stretched) to fit.
- Fit Start:** The image will be scaled vertically and if it is smaller then the screen size it will be flushed to the left and have a black space on the right.

Image Transition Effect In: Fade In, Fade Out, Flip Horizontal, Flip Vertical, Rotate, Scale In, Scale Out, Slide In, Slide Out

Image Transition Effect Out: None, Fade In, Fade Out, Flip Horizontal, Flip Vertical, Rotate, Scale In, Scale Out, Slide In, Slide Out

Image Scale Type: Center Crop, Fit Center (62), Fit XY, Fit Start

Play Content From StudioPro Server - Basic Set Up and Functionality
 The VP92 can play content that you create and manage from our web server. You can create a free account with our new Web Based portal (Studio Web / Sign Studio) here - <https://galaxy.signage.me/signstudio/login> or our legacy platform here - <http://studiopro.videoteldigital.com> all that is required is an Email and Password. Keep in mind that these same credentials will be used when registering a single VP92 or 100s so chose an email that will be available for many years. If the email or password changes on the web server you will need re-register each VP92.

To create a free StudioPro account follow steps on the next few pages. You will be prompted to choose from 100s of pre designed templates (65). Once you have created a campaign, set your VP92 to "Play From Web Server" (see page 1) and then register it (see steps 8-12 on page 6). **With Studio Pro we are also able to access your campaign and provide support remotely.**



StudioPro - Create an account & register VP92

Step 1 - Go to <http://studiopro.videoteldigital.com>

Step 2 - Click Here

Step 3 - Pick a template that best represents your business

Step 4 - Enter business name, e-mail, password & create account

Step 5 - Switch the VP90 to "Play Content From Web Server" mode (see page 1) and then cycle the power. Note: A standard USB mouse can be used.

Step 6 - Once the below screen appears... click "Connect"

Step 7 - Enter the same e-mail and password that was used to register the account

Step 8 - Select the template you chose & name the player

Step 9 - Click the "Start" Button

Step 11 - Click the "Play" Button

Step 10 - Click the "Play" Button

Step 12 - Download the Signage Studio software for PC or MAC

Step 13 - Open the Signage Studio Program and Log In

Step 14 - Click the "Play" Button

Working with StudioPro - Advanced Mode
 StudioPro is an extremely versatile and powerful screen management system. You can use a pre made template and/or create a new campaign from scratch. The below instructions are just a quick overview of the 1,000+ options that are available. For training videos and additional help, please visit - www.videoteldigital.com/support.

Videotel also offers a campaign design service for a nominal fee. Our team will discuss your general design requests and implement your photos, videos, links, text, etc. We will then provide you a training video on how to edit and update your campaign. Simply e-mail us at sales@videoteldigital.com for a quote.

When you first open StudioPro the campaign design you chose will appear. To the right is an example of the "Food Items" campaign (66). You can select a Timeline from the column on the left (67) (Pizza Subs is selected) and then click the play icon in the Timeline window. This will play the designed video for 30 seconds. If you wish to change the timeline length, simply click on the Timeline (69) and edit the time in the window to the right (70). If you wish to play multiple timelines in order.... drag the next Time line below the 1st one (71). Each Timeline has an output which is basically the screen layout. You can design a segmented layout in "Screens". Each segment can be assigned to a channel. In the above example (72)... CH1 is the thin column on the left of the screen. Each CH is a channel and can be renamed. The channels are layers... the 1st channel after the output is the back layer. Each additional channel is on top of each other. The items in the channels are resources (73) or scenes (74) which can be dragged into the Timeline. Once the are in the timeline you can click on the item and change the length in the box on the right or simply drag it right, left, longer or shorter. You can upload your photos, videos and other content by clicking the Resources section (75) then click the + (76). To upload from your computer, use the "from

Step 12 - Download the Signage Studio software for PC or MAC

Step 13 - Open the Signage Studio Program and Log In

Step 14 - Click the "Play" Button

Step 15 - Click the "Play" Button

Step 16 - Click the "Play" Button

Step 17 - Click the "Play" Button

Step 18 - Click the "Play" Button

Step 19 - Click the "Play" Button

Step 20 - Click the "Play" Button

Step 21 - Click the "Play" Button

Step 22 - Click the "Play" Button

Step 23 - Click the "Play" Button

Step 24 - Click the "Play" Button

Step 25 - Click the "Play" Button

Step 26 - Click the "Play" Button

Step 27 - Click the "Play" Button

Step 28 - Click the "Play" Button

Step 29 - Click the "Play" Button

Step 30 - Click the "Play" Button

Step 31 - Click the "Play" Button

Step 32 - Click the "Play" Button

Step 33 - Click the "Play" Button

Step 34 - Click the "Play" Button

StudioPro has 2 modes - **Advanced mode** and **Simple mode**. You can switch between these 2 modes by clicking the icon in the upper right corner (83). Simple mode allows you to create 1 scene. Inside this scene you rotate through multiple images or videos using the Playlist (84) widget. The "Outline" (92) section lists all the widgets on the scene. You can click on each one and edit the properties to the right. In this example the text below the 1st "restaurant" section (93) is selected. To the right you can see the same text in the "Label" section. The below example was downloaded from the "Global scenes" (85) catalog, accessible from the "library" drop down option. There are hundreds of templates and samples to choose from or you can create one from scratch (86). After making changes to anything in StudioPro you must Save/Upload your work (77).

Step 35 - Click the "Play" Button

Step 36 - Click the "Play" Button

Step 37 - Click the "Play" Button

Step 38 - Click the "Play" Button

Step 39 - Click the "Play" Button

Step 40 - Click the "Play" Button

Step 41 - Click the "Play" Button

Step 42 - Click the "Play" Button

Step 43 - Click the "Play" Button

Step 44 - Click the "Play" Button

Step 45 - Click the "Play" Button

Step 46 - Click the "Play" Button

Step 47 - Click the "Play" Button

Step 48 - Click the "Play" Button

Step 49 - Click the "Play" Button

Step 50 - Click the "Play" Button

Step 51 - Click the "Play" Button

Step 52 - Click the "Play" Button

Step 53 - Click the "Play" Button

Step 54 - Click the "Play" Button

Step 55 - Click the "Play" Button

Step 56 - Click the "Play" Button

Step 57 - Click the "Play" Button

Step 58 - Click the "Play" Button

Step 59 - Click the "Play" Button

Step 60 - Click the "Play" Button

Step 61 - Click the "Play" Button

Step 62 - Click the "Play" Button

Step 63 - Click the "Play" Button

Step 64 - Click the "Play" Button

Step 65 - Click the "Play" Button

Step 66 - Click the "Play" Button

Step 67 - Click the "Play" Button

Step 68 - Click the "Play" Button

Step 69 - Click the "Play" Button

Step 70 - Click the "Play" Button

Step 71 - Click the "Play" Button

Step 72 - Click the "Play" Button

Step 73 - Click the "Play" Button

Step 74 - Click the "Play" Button

Step 75 - Click the "Play" Button

Step 76 - Click the "Play" Button

Step 77 - Click the "Play" Button

Step 78 - Click the "Play" Button

Step 79 - Click the "Play" Button

Step 80 - Click the "Play" Button

Step 81 - Click the "Play" Button

Step 82 - Click the "Play" Button

Step 83 - Click the "Play" Button

Step 84 - Click the "Play" Button

Step 85 - Click the "Play" Button

Step 86 - Click the "Play" Button

Step 87 - Click the "Play" Button

Step 88 - Click the "Play" Button

Step 89 - Click the "Play" Button

Step 90 - Click the "Play" Button

Step 91 - Click the "Play" Button

Step 92 - Click the "Play" Button

Step 93 - Click the "Play" Button

Step 94 - Click the "Play" Button

Step 95 - Click the "Play" Button

Step 96 - Click the "Play" Button

Step 97 - Click the "Play" Button

Step 98 - Click the "Play" Button

Step 99 - Click the "Play" Button

Step 100 - Click the "Play" Button

Once your campaign or scene is finished you can assign it to all of your screens or to select ones. Simply click on the "Stations" (87) option and the screen below will appear. From this screen you can change the name of the screen / player on the right (88). You can also choose which campaign or scene (89) you wish to display. The player status (online or offline) is also shown on the left (90). Using the "snapshot" (91) button you can get a live image of what is playing on your screen. When making changes to the station screen you must also Save / Upload (77).

Step 101 - Click the "Play" Button

Step 102 - Click the "Play" Button

Step 103 - Click the "Play" Button

Step 104 - Click the "Play" Button

Step 105 - Click the "Play" Button

Step 106 - Click the "Play" Button

Step 107 - Click the "Play" Button

Step 108 - Click the "Play" Button

Step 109 - Click the "Play" Button

Step 110 - Click the "Play" Button

Step 111 - Click the "Play" Button

Step 112 - Click the "Play" Button

Step 113 - Click the "Play" Button

Step 114 - Click the "Play" Button

Step 115 - Click the "Play" Button

Step 116 - Click the "Play" Button

Step 117 - Click the "Play" Button

Step 118 - Click the "Play" Button

Step 119 - Click the "Play" Button

Step 120 - Click the "Play" Button

Step 121 - Click the "Play" Button

Step 122 - Click the "Play" Button

Step 123 - Click the "Play" Button

Step 124 - Click the "Play" Button

Step 125 - Click the "Play" Button

Step 126 - Click the "Play" Button

Step 127 - Click the "Play" Button

Step 128 - Click the "Play" Button

Step 129 - Click the "Play" Button

Step 130 - Click the "Play" Button

Step 131 - Click the "Play" Button

Step 132 - Click the "Play" Button

Step 133 - Click the "Play" Button

Step 134 - Click the "Play" Button

Step 135 - Click the "Play" Button

Step 136 - Click the "Play" Button

Step 137 - Click the "Play" Button

Step 138 - Click the "Play" Button

Step 139 - Click the "Play" Button

Step 140 - Click the "Play" Button

Step 141 - Click the "Play" Button

Step 142 - Click the "Play" Button

Step 143 - Click the "Play" Button

Step 144 - Click the "Play" Button

Step 145 - Click the "Play" Button

Step 146 - Click the "Play" Button

Step 147 - Click the "Play" Button

Step 148 - Click the "Play" Button

Step 149 - Click the "Play" Button

Step 150 - Click the "Play" Button