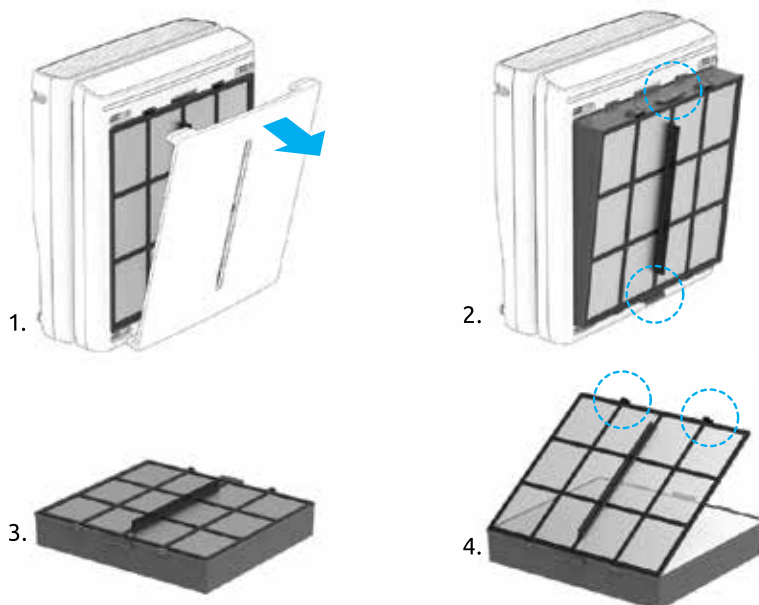


Always power off the unit before cleaning or replacing the filters. Depending on your indoor environment, the lifespan of the filters may vary. The filter light will appear red for cleaning/maintenance; it will blink red when it is time to change filters.



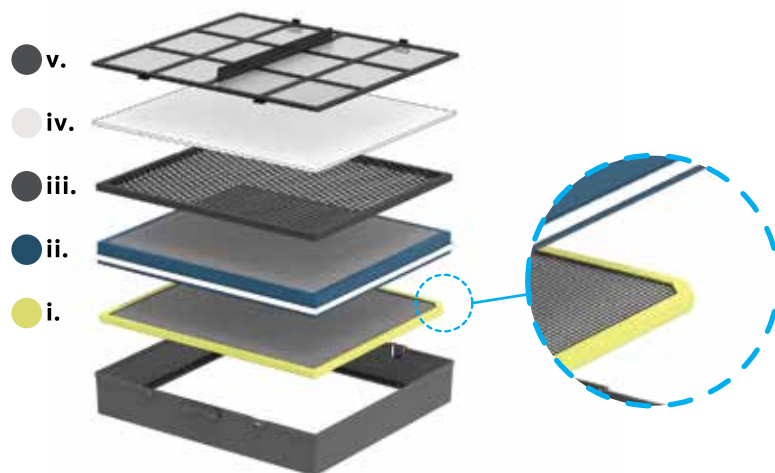
## Removing the Filter Case

1. Hold the top of the front panel and pull towards you to remove the cover.
2. Push down on the middle tabs located on the top and bottom of the Filter Case and then pull towards you to release the Filter Case.
3. Once you have removed the Filter Case, lay it on a flat surface.
4. Remove the Pre-Filter by pinching the two tabs on the top left and right side of the frame.



## Installing Your New Filters

1. Unwrap all of your new replacement filters.
2. Insert the new filters into the Filter-Case. Make sure to identify the orientation and direction for each filter.
  - **i. Customized Filter**  
Ensure that the filter label faces outwards and is located on the top. The top right corner is different from the other 3 corners and should be aligned accordingly.
  - **ii. BioGS HEPA Filter**
  - **iii. Activated Carbon Filter**
  - **iv. Medium Filter**  
Make sure the edge of the medium filter lines up and sticks to the velcro on the Activated Carbon Filter.
  - **v. Pre-Filter**
3. With the new filters inside the case, place the Pre-Filter in last, making sure all the filters are packed snugly.
4. Insert the Filter Case with all the new filters back into the MinusA3.



**Need some help?**

Visit us at [www.rabbitair.com](http://www.rabbitair.com) or call us at 888.866.8862  
24/7 Customer Care

**How to Maintain the MinusA3**

[www.rabbitair.com/MinusA3clean](http://www.rabbitair.com/MinusA3clean)