



Bio™  
G

Ultra Quiet Air Purifier

Hello!



Owner's manual

Models: SPA-550A  
SPA-625A

24/7 customer care



For Questions: Call 888.866.8862  
Visit us at [www.rabbitair.com](http://www.rabbitair.com)

Copyright © Rabbit Air 2017. All rights reserved

BIOG52UM1710

# Hello there!

# General Safety Information About Your BioGS Air Purifier

“ Meet your brand new BioGS®!  
We hope that this stylish bundle of cleanliness is just what you've been looking for. Be sure to get familiar with this newest addition to your home, by exploring all of its features in the enclosed booklet and on our website. If you have any questions just give us a call, anytime. We love to hear from you! ”

## Register your air purifier online now for: Register online at [www.rabbitair.com/warranty](http://www.rabbitair.com/warranty)

- **Product Protection**  
By registering your product and purchase information, we can confirm the date of purchase to secure your warranty. This confirmation serves as security in the event that your original proof of purchase is lost, or in case your unit needs any servicing in the future.
- **Proof of Ownership**  
Your model number, serial number, and other information will be kept in our files. Please complete and return this registration within 90 days from purchase in order to receive our 5-year limited warranty.

24/7 customer care



For Questions: Call 888.866.8862  
Visit us at [www.rabbitair.com](http://www.rabbitair.com)

The Energy Star label and disclaimer:



This product earned the ENERGY STAR by meeting strict energy efficiency guidelines set by the US EPA. US EPA does not endorse any manufacturer claims of healthier indoor air from the use of this product.

The energy efficiency of this ENERGY STAR qualified model is measured based on a ratio between the model's CADR for dust and the electrical energy it consumes, or CADR/Watt.

Caution: When using electrical appliances, observe the following basic precautions to reduce the risk of fire, electric shock, and injury:

- Please read all tips and warnings before using your Rabbit Air purifier.
- Use only as directed by the Owner's Manual.
- Please observe extreme caution when using the air purifier in close proximity to children.
- Rabbit Air purifiers are for indoor use only.
- The Rabbit Air purifier is not intended for use in bathrooms, laundry areas, or other damp indoor environments. Keep the Rabbit Air purifier away from water at all times.
- Do not use the Rabbit Air purifier near fireplaces or in areas where flammable or combustible products or vapors may be present.
- This appliance has a polarized plug (one blade is wider than the other). To reduce the risk of electric shock, this plug is intended to fit in a polarized outlet only one way. If the plug does not fit fully in the outlet, reverse the plug. If it still does not fit, contact a qualified electrician. Do not attempt to defeat this safety feature.
- This appliance is not intended for use by persons (including children) with reduced physical, sensory or mental capabilities, or lack of experience and knowledge, unless they have been given supervision or instruction concerning use of the appliance by a person responsible for their safety.
- Children should be supervised to ensure they do not play with the appliance.
- This product complies with the maximum allowable concentration of ozone of 0.050 parts per million by volume (ppmv) in a 24-hour period. The Health Canada Guideline 2010 recommends that the Maximum exposure limit, based on an averaging time of 8 hours, is 0.020 ppmv or less when tested in a Sealed, controlled room approximately 30 m<sup>3</sup>.



A childproof feature pauses air purifier operation when the front panel is removed.

## Electrical Safety Instructions

- The Rabbit Air purifier is designed for use in a 110/120V outlet only.
- Turn off your Rabbit Air purifier before unplugging it from the power outlet.
- Unplug the Rabbit Air purifier from the power outlet when not in use and before servicing or cleaning the unit.
- To reduce the risk of electric shock, the Rabbit Air purifier has a polarized plug, which means it will fit into a polarized outlet only one way. If the plug does not fit into the outlet, reverse the plug. If it still does not fit, contact qualified personnel to install the proper outlet. Do not alter the plug in any way.
- To avoid electric shock, do not touch the air purifier or its power plug with wet hands.
- Keep the electrical cord away from heated surfaces at all times.
- If the cord or plug appears damaged, return the unit immediately to an authorized service facility for examination and repair.
- Any attempts to repair the Rabbit Air purifier without written permission from Rabbit Air will void the warranty and could cause serious personal injury to the user and/or result in severe damage to the unit.
- Do not pull, carry, lift, or drag the Rabbit Air purifier by pulling its power cord. Remove the power plug from its outlet by grasping the plug and pulling gently.
- When the Rabbit Air purifier is plugged into a power outlet, keep all fingers, body parts, hair, jewelry, and loose clothing away from the openings.

## Installation Guidelines

- Avoid putting the Rabbit Air purifier in a place where the air intake or air outlet could become clogged with dirt.
- Leave at least two feet of space between the air purifier's intake, outlet, and the wall.

## Operation Guidelines

- Do not block the air intake or air outlet.
- Do not use the Rabbit Air purifier on or around hot surfaces.
- Do not use the Rabbit Air purifier in a room where it may come into contact with steam.
- Do not operate the Rabbit Air purifier on its side.
- Do not install the Rabbit Air purifier in greasy or damp environments.
- Do not use detergent or soap to clean the Rabbit Air purifier.
- Do not operate the Rabbit Air purifier without filters.
- Do not wash and reuse the filters except for the washable Pre-Filter.
- When transporting the Rabbit Air purifier, always hold the handle on the back of the unit.

## Remote Control

- Inverter lighting equipment or electronic light fixtures may interfere with remote control signals.
- Avoid storing the remote control in direct sunlight. Heat may interfere with remote control signals.

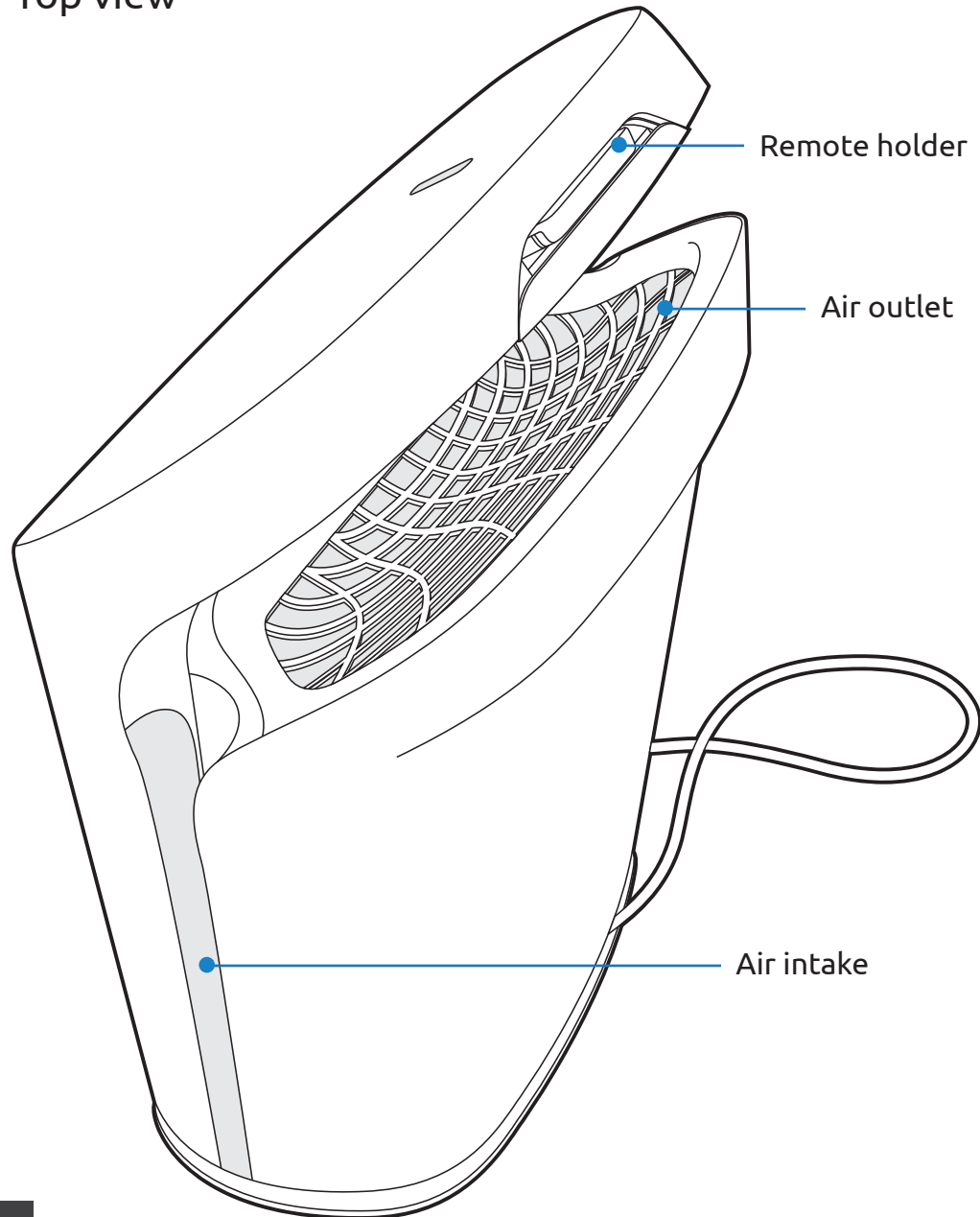


**WARNING:** Chemical Burn Hazard. Keep batteries away from children.

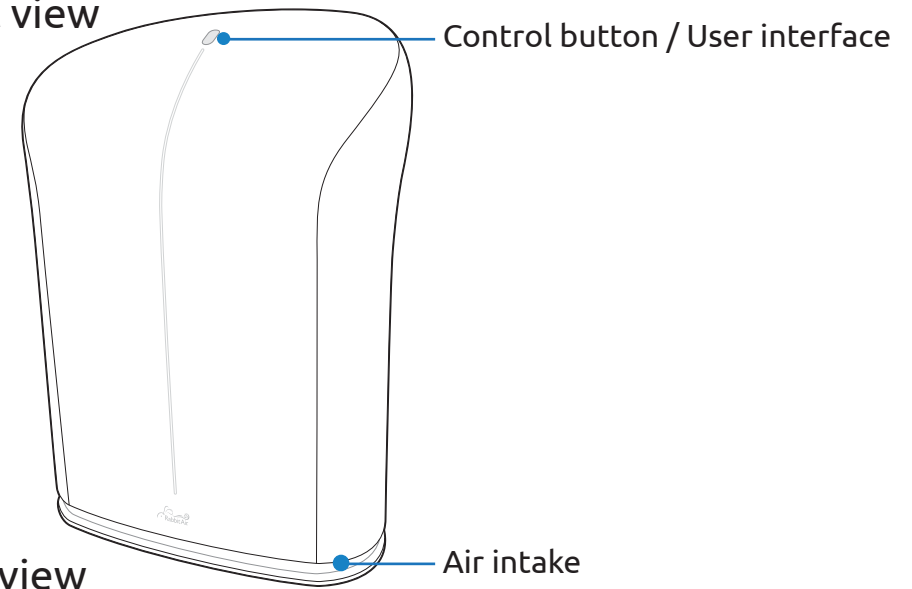
- This product contains a lithium button/coin cell battery. If a new or used lithium button/coin cell battery is swallowed or enters the body, it can cause severe internal burns and can lead to death in as little as 2 hours.
- Always completely secure the battery compartment. If the battery compartment does not close securely, stop using the product, remove the batteries, and keep it away from children.
- If you think batteries might have been swallowed or placed inside any part of the body, seek immediate medical attention.
- The cells shall be disposed of properly, including keeping them away from children.
- Even used cells may cause injury.

# Meet your BioGS 2.0

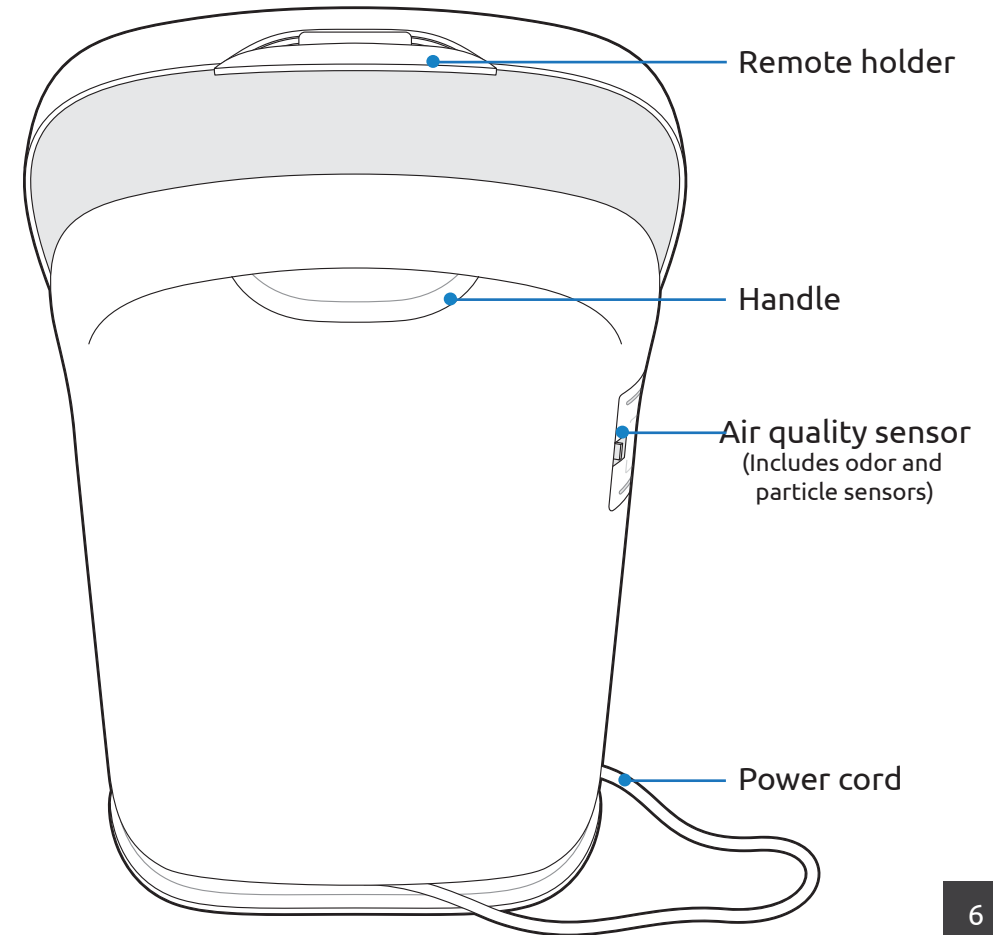
Top view

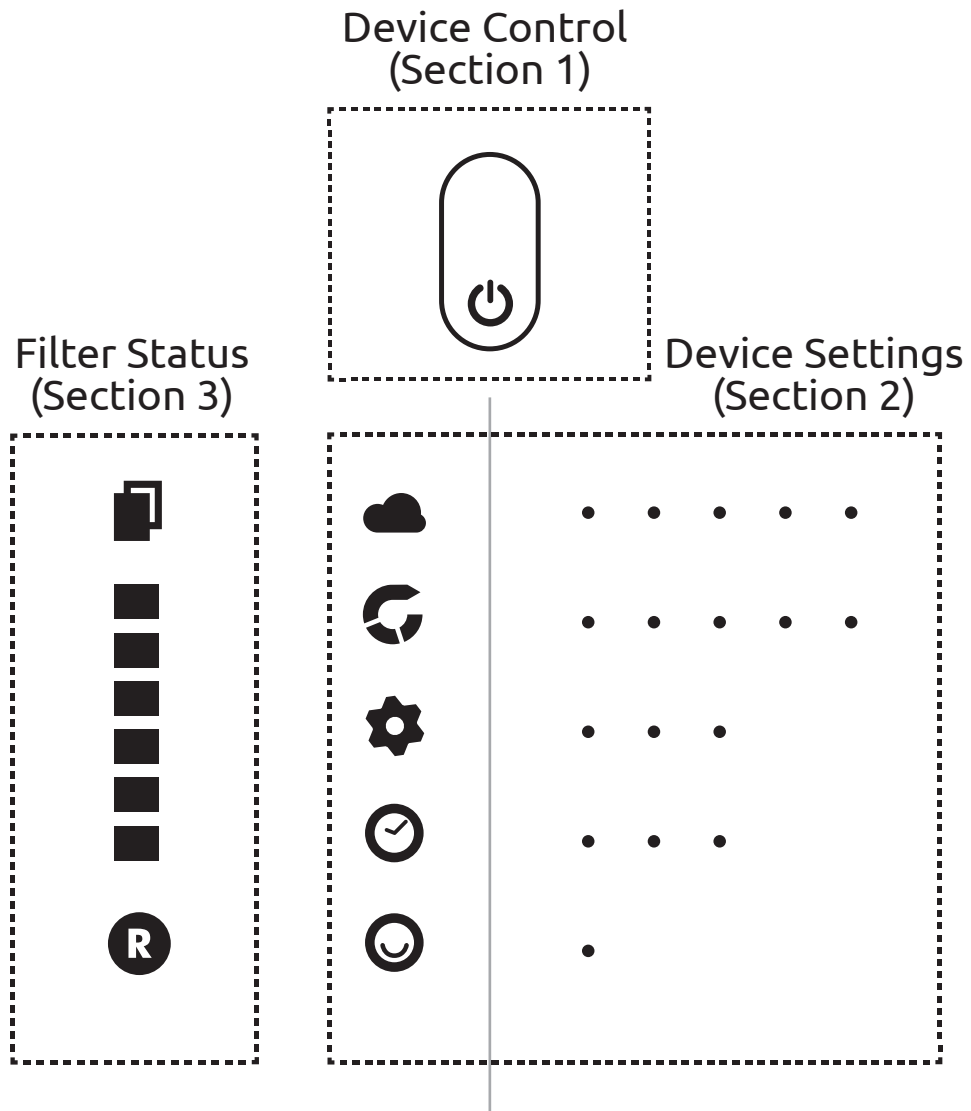


Front view



Back view



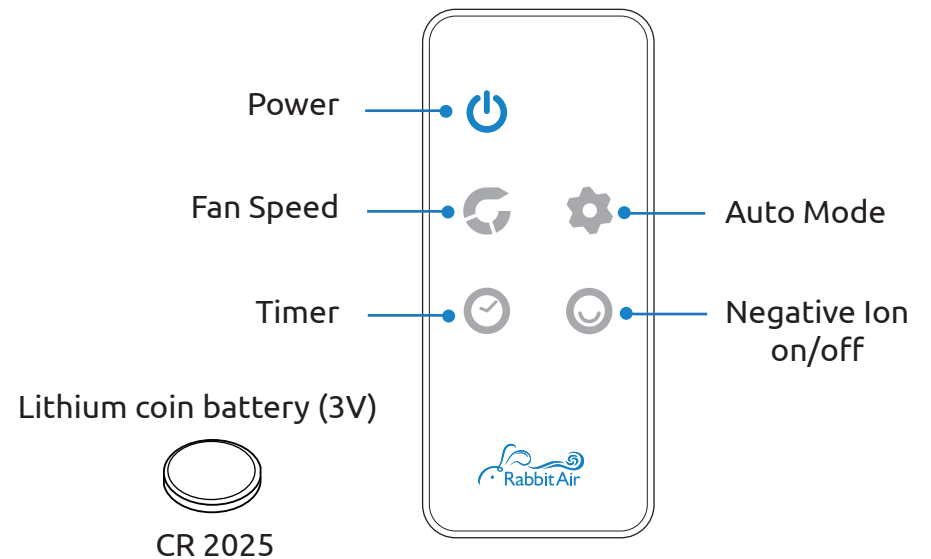


## Main Control Button



The control button light will appear when the BioGS is operating.  
Tap this button to power on the unit.  
Tap it again to cycle through different fan speeds and auto modes.  
Press and hold to power off the unit.

## Remote Control



## Device Settings - Section 2



When the unit has been idle for five minutes, the user interface lights will disappear. To view the display, tap the control button on the unit or remote.



These lights indicate the level of air pollution detected.



These lights indicate the fan speed of the unit.



These lights indicate the sensitivity of the air quality sensor.



These lights indicate how long the timer has been set for.



This light illuminates if the Negative Ion Generator is on.



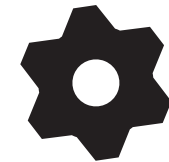
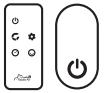
### • Air Quality Indicator

When the air purifier is in Auto Mode, the Air Quality Indicator will continually monitor the odor and particle levels in the air, the user interface will light up briefly each time the pollution level changes. When the purifier is in a manual speed setting, the interface will not light up.



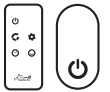
### • Fan Speed

These lights indicate the current manual speed setting. Low fan speed is indicated by a single light. High fan speed is indicated by five lights. When in Auto Mode, the fan speed will adjust according to the air quality.



### • Auto Mode

These lights indicate the level of sensitivity of the air quality sensor when the unit is in Auto Mode. The fan adjusts its speed according to the air quality.



### • Timer

Set the air purifier to turn off after a specific period of time. One light indicates a four-hour timer, two lights indicate an eight-hour timer, three lights indicate a 12-hour timer.



### • Negative Ions

When this light is on, it means the unit is generating negative ions.

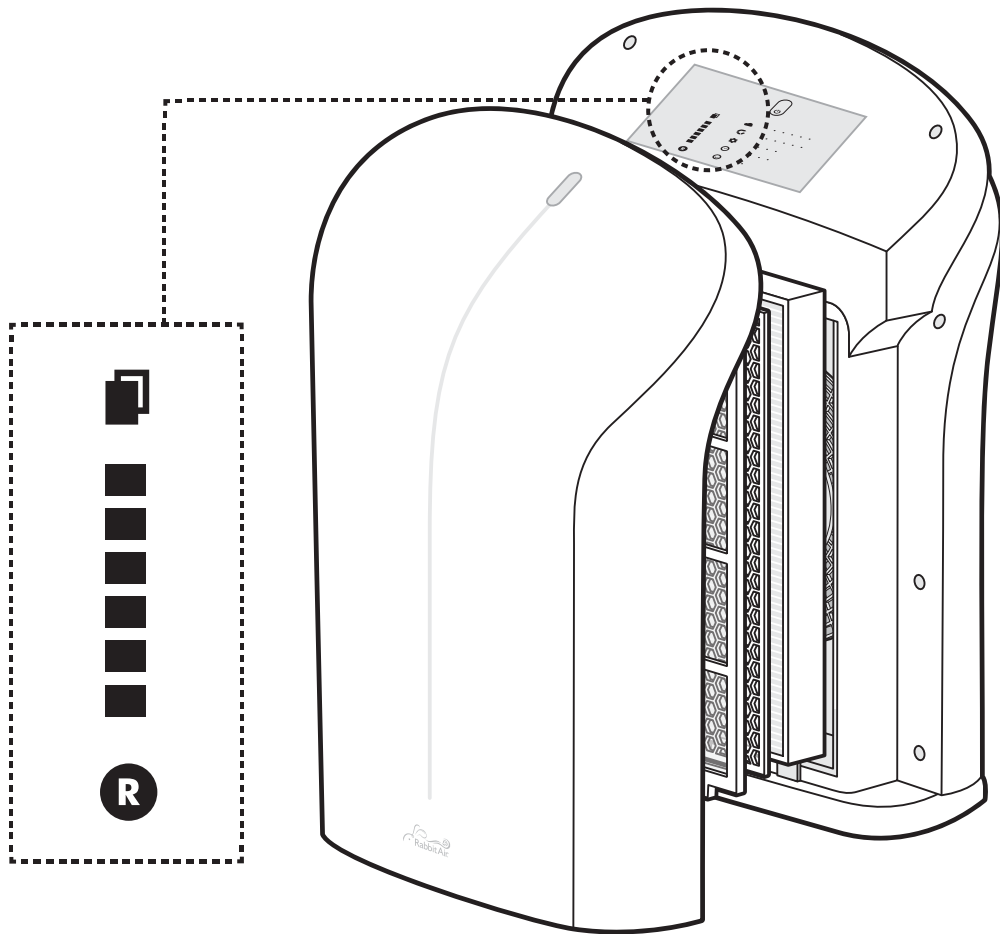


This feature can be accessed through the main control button.



This feature can be accessed through the remote.

## Filter Status - Section 3



- **Filter Maintenance & Replacement Light**  
The Filter Maintenance and Replacement Light will illuminate when your air purifier needs attention.

Solid light = It's time to clean the filters.  
Flashing light = It's time to replace the filters.



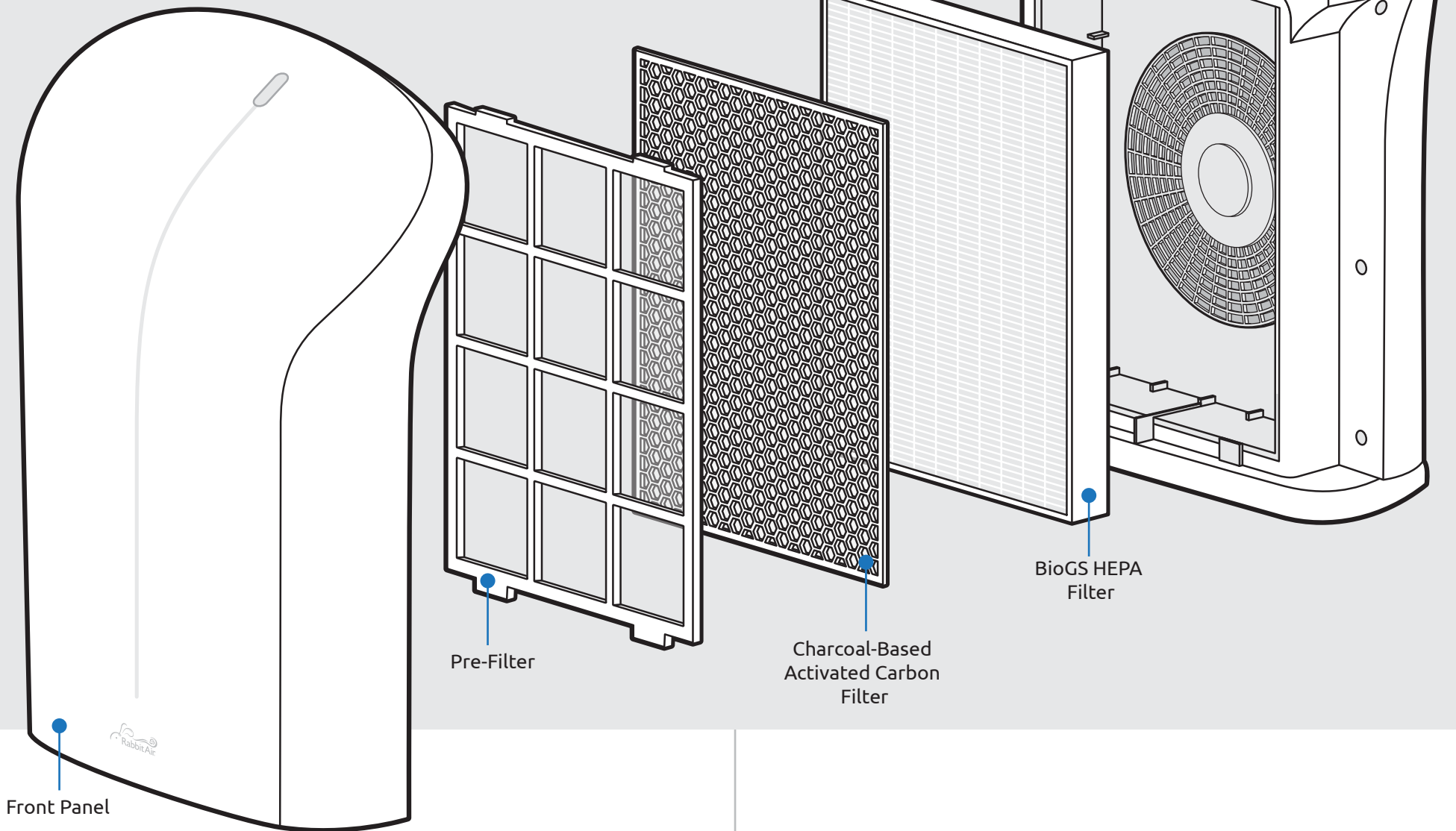
- **Filter Life Light**  
The Filter Life Light is visible only when the front panel has been removed. It indicates how much time has passed since the last time the filters were replaced. Since the filters should be cleaned every three months, each light represents three months of the filters' life. Each time a light goes out, the Filter Maintenance and Replacement Light will illuminate to inform you that it's time to clean the filters.

6 LEDs = The filters are new.  
1 LED = The filters should be replaced soon.



- **Filter Reset Button**  
Press this button briefly to turn off the Filter Maintenance and Replacement Light after each cleaning, the Filter Life Light will continue to diminish as time passes. We recommend replacing the filters every 18 months. After you have replaced them, press and hold for 5 seconds to reset the Filter Life Light.

## Meet the Filters

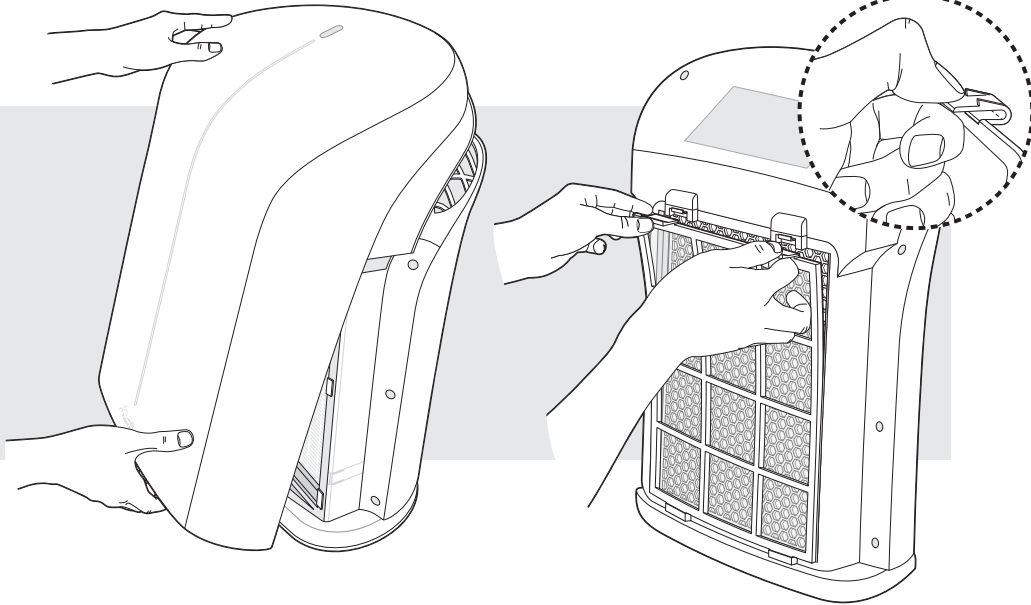




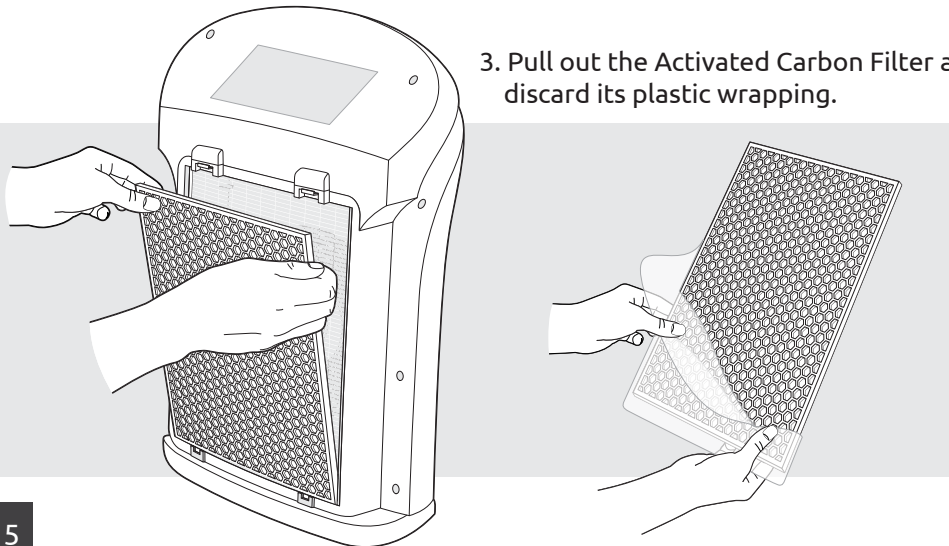
# Let's begin - Initial setup

The BioGS Air Purifier is designed for residential use only. To maintain the quality of the filters, they are packaged in plastic. Please remove the filters from the plastic bags before using the unit.

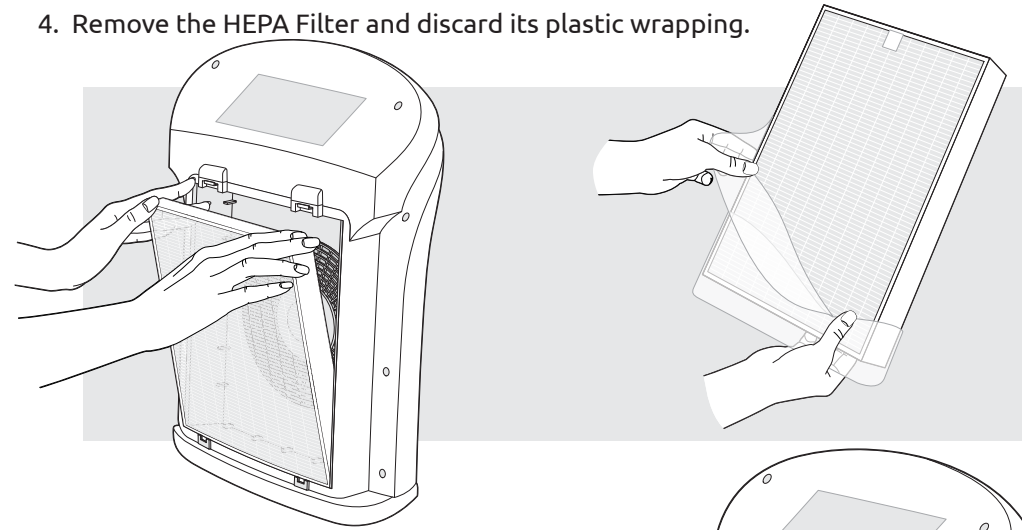
1. Remove the front panel by lifting from the bottom and pulling up.
2. Pinch the two tabs on top of the Pre-Filter to remove it.



3. Pull out the Activated Carbon Filter and discard its plastic wrapping.



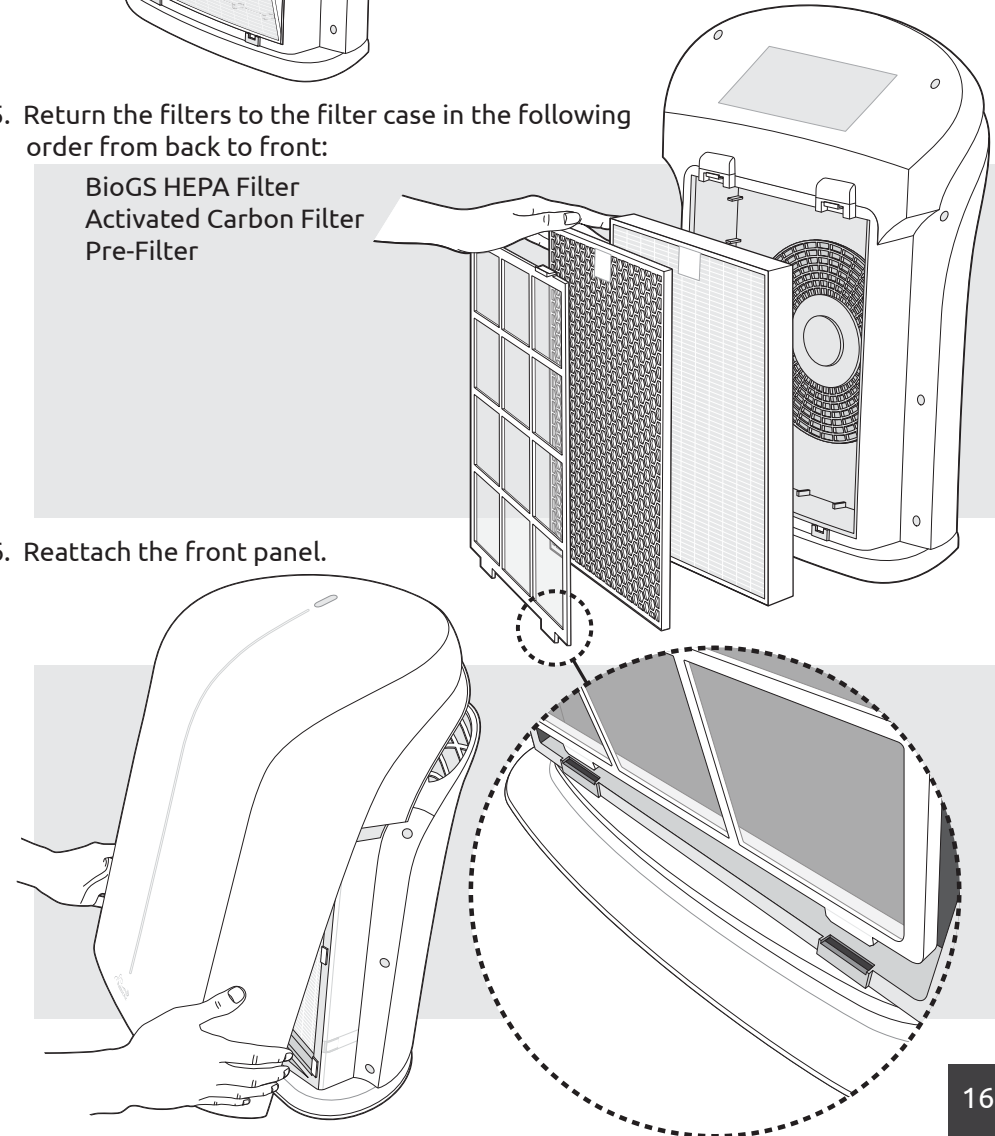
4. Remove the HEPA Filter and discard its plastic wrapping.



5. Return the filters to the filter case in the following order from back to front:

BioGS HEPA Filter  
Activated Carbon Filter  
Pre-Filter

6. Reattach the front panel.



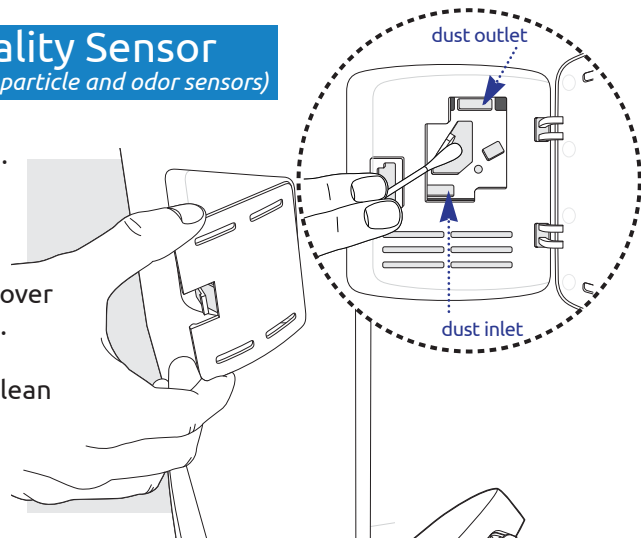
# Cleaning and Maintenance

## Cleaning the Air Quality Sensor

*(Includes particle and odor sensors)*

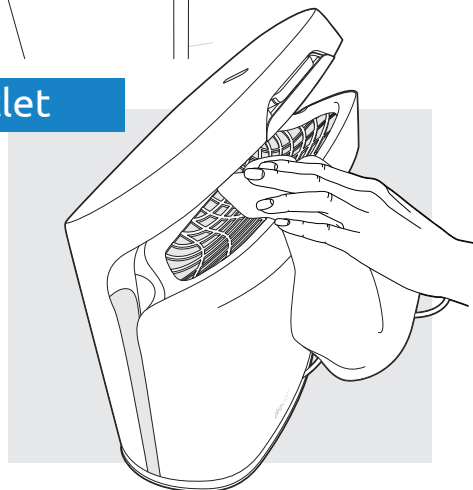
Clean the air quality sensor every six months or as needed.

1. Open the air quality sensor cover (on the right side of the unit).
2. Use a damp cotton swab to clean the lens, dust inlet, and dust outlet, and dry thoroughly.



## Cleaning the Air Intake and Outlet

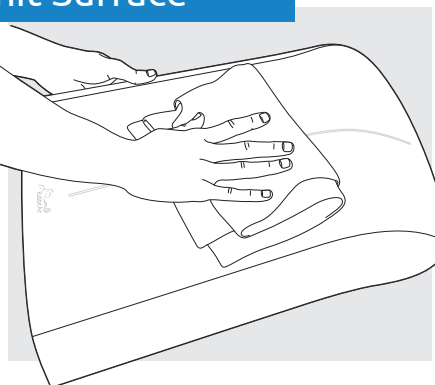
1. Clean the air intake and outlet with a dry cloth or a soft brush. If necessary, use a damp cloth. Avoid commercial cleaning products.



Caution: Be careful not to drop anything into the unit.

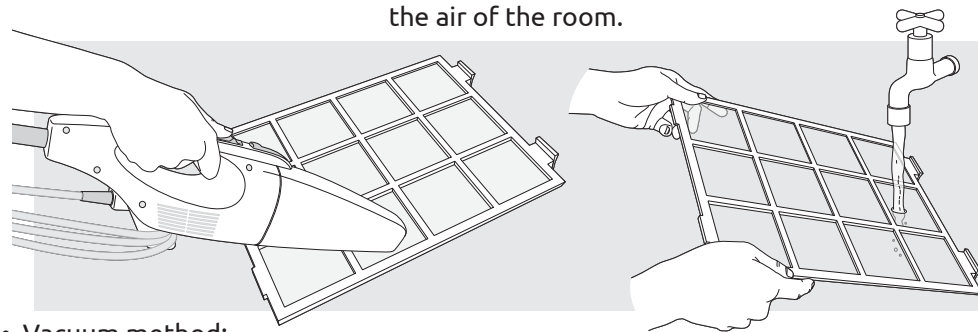
## Cleaning the Front Panel and Unit Surface

1. Remove the front panel from the unit and use a dry cloth or soft brush to dust off the front and the back of the panel. If necessary, use a damp cloth to remove stubborn stains and dirty buildup. Avoid commercial cleaning products.
2. Use a clean, dry cloth to wipe the external surfaces of the air purifier.



## Cleaning the Pre-Filter

The Pre-Filter should be cleaned according to the level of pollution in the air of the room.



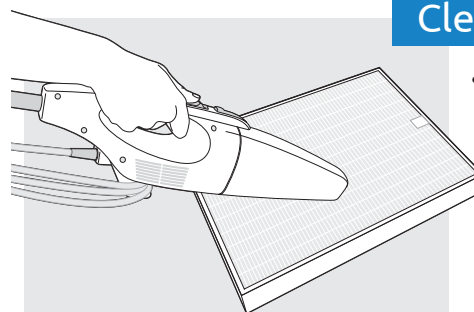
- Vacuum method:
  1. Remove the front panel from the air purifier.
  2. Run a handheld vacuum cleaner with a nozzle or brush attachment on a low power setting along the Pre-Filter to remove visible particles.

If vacuuming does not seem to sufficiently clean your Pre-Filter, please follow the steps below to wash it.

- Washing method:
  1. Remove the Pre-Filter from the unit.
  2. Fill the sink with lukewarm water and gently wash the Pre-Filter under the water for two to three minutes or until it is completely clean.
  3. Rinse the Pre-Filter with clean tap water.
  4. Use a towel to remove any excess water from the Pre-Filter.
  5. Allow the Pre-Filter to dry for 12 to 24 hours.
  6. When the Pre-Filter is completely dry, place it back into the air purifier.

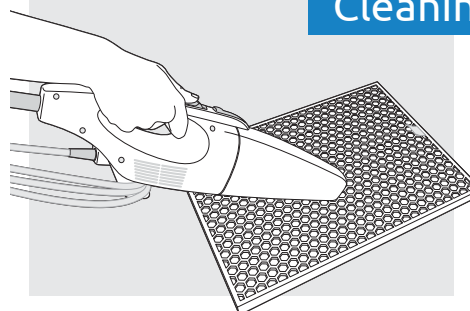
## Cleaning the HEPA Filter

- Vacuum method:
  1. Run a handheld vacuum cleaner on low power setting, or a soft brush, along the HEPA Filter to remove visible particles.



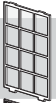


## Cleaning the Activated Carbon Filter

- Vacuum method:
  1. Run a handheld vacuum cleaner with a nozzle or brush attachment on low power setting along the Activated Carbon Filter to remove visible particles.



# Filter Cleaning and Replacement Schedule\*

The lifespan of the filters is estimated based on normal residential use.

Filters	Filter Life	Cleaning
 Pre-Filter	Washable	Every month
 Charcoal-Based Activated Carbon	18 Months	Every 3 months
 BioGS HEPA	18 Months	Every 3 months

\*Based on 24/7 operation

## Replacing the Filters

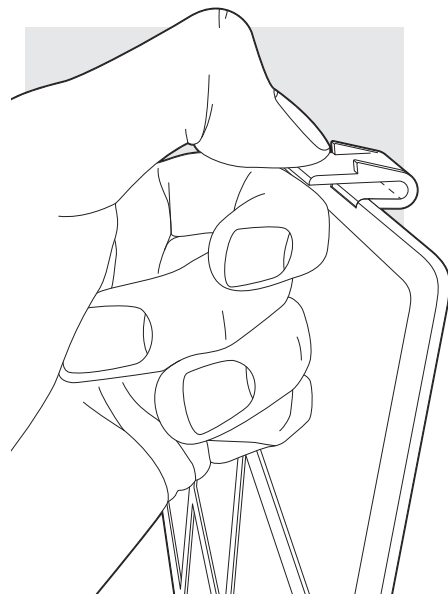
Always unplug the unit before cleaning/replacing the filters. The lifespan of the air purifier's filters will vary, based on the amount of pollutants in your home.

### Pre-Filter *Washable filter*

Do NOT discard the Pre-Filter. It is designed to be cleaned and reused.

The Pre-Filter is a permanent filter and does not need to be replaced.

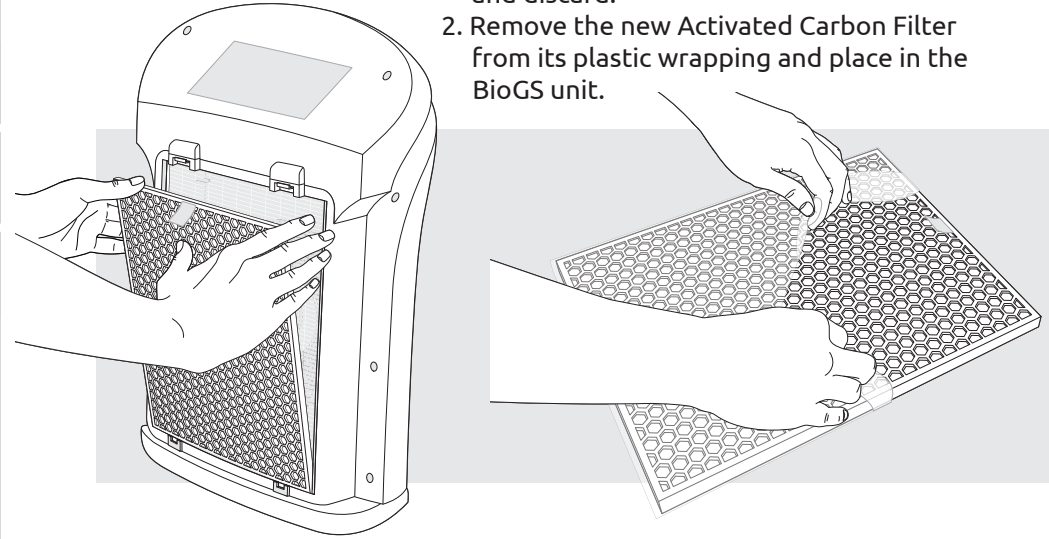
1. Pinch the two tabs on top of the Pre-Filter to remove it.
2. Put the Pre-Filter aside while replacing the other filters.



## Replacing the Activated Carbon Filter *Every 18 months*

Discard the old Activated Carbon Filter. This filter cannot be reused.

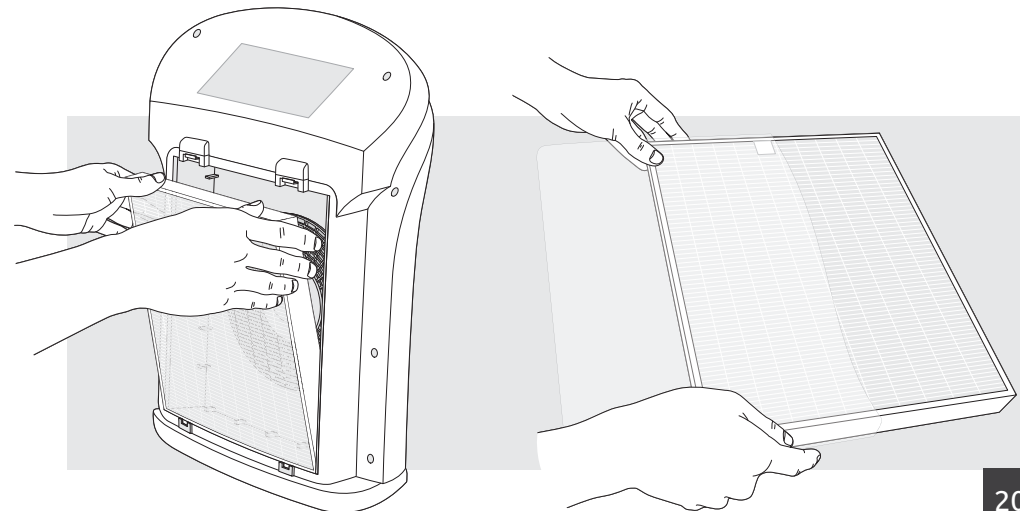
1. Pull out the old Activated Carbon Filter and discard.
2. Remove the new Activated Carbon Filter from its plastic wrapping and place in the BioGS unit.



## Replacing the BioGS HEPA Filter *Every 18 months*

Discard the old HEPA Filter. This filter cannot be reused.

1. Remove and discard the old HEPA Filter.
2. Remove the new filter from its plastic wrapping.
3. Place the new HEPA Filter in the BioGS unit.



# Limited Warranty

Rabbit Air  
Five (5) Year Limited Warranty  
(For Rabbit Air Branded Products Only)

**IMPORTANT: BY USING the BioGS 2.0 OR MinusA2 air purifiers (each, a “Rabbit Air Product”) YOU ARE AGREEING TO BE BOUND BY THE TERMS OF THE RABBIT AIR FIVE (5) YEAR LIMITED WARRANTY (“WARRANTY”) AS SET OUT BELOW. AS NOTED IN THE “YOUR RESPONSIBILITIES” SECTION BELOW, RABBIT AIR RESERVES THE RIGHT NOT TO HONOR THIS WARRANTY IF IT HAS NOT BEEN REGISTERED WITHIN NINETY (90) DAYS OF YOUR PURCHASE OF THE RABBIT AIR PRODUCT. THIS WARRANTY APPLIES REGARDLESS OF WHETHER YOU PURCHASE A RABBIT AIR PRODUCT FROM A RABBIT AIR AUTHORIZED RESELLER OR DIRECTLY FROM RABBIT AIR.**

DO NOT USE YOUR RABBIT AIR PRODUCT UNTIL YOU HAVE READ THE TERMS OF THE WARRANTY. IF YOU DO NOT AGREE TO THE TERMS OF THE WARRANTY, DO NOT USE THE RABBIT AIR PRODUCT AND RETURN IT WITHIN THE RETURN PERIOD STATED IN RABBIT AIR’S RETURN POLICY (FOUND AT <https://www.rabbitair.com/pages/why-rabbit-air#money-back>) TO RABBIT AIR OR TO THE AUTHORIZED RESELLER WHERE YOU PURCHASED IT FOR A REFUND. THIS limited warranty does not cover replacement filters, FILTER FRAMES, FILTER CASES, OR WALL MOUNT BRACKETS.

## HOW CONSUMER LAW RELATES TO THIS WARRANTY

THIS WARRANTY GIVES YOU SPECIFIC LEGAL RIGHTS, AND YOU MAY HAVE OTHER RIGHTS THAT VARY FROM STATE TO STATE (OR BY COUNTRY OR PROVINCE). OTHER THAN AS PERMITTED BY LAW, RABBIT AIR DOES NOT EXCLUDE, LIMIT, OR SUSPEND OTHER RIGHTS YOU MAY HAVE, INCLUDING THOSE THAT MAY ARISE FROM THE NONCONFORMITY OF A SALES CONTRACT. FOR A FULL UNDERSTANDING OF YOUR RIGHTS YOU SHOULD CONSULT THE LAWS OF YOUR COUNTRY, PROVINCE, OR STATE.

## WARRANTY LIMITATIONS SUBJECT TO CONSUMER LAW

TO THE EXTENT PERMITTED BY LAW, THIS WARRANTY AND THE REMEDIES SET FORTH ARE EXCLUSIVE AND IN LIEU OF ALL OTHER WARRANTIES, REMEDIES, AND CONDITIONS, WHETHER ORAL, WRITTEN, STATUTORY, EXPRESS, OR IMPLIED. LIKEWISE, TO THE EXTENT PERMITTED BY LAW, RABBIT AIR DISCLAIMS ALL STATUTORY AND IMPLIED WARRANTIES, INCLUDING WITHOUT LIMITATION WARRANTIES OF MERCHANTABILITY AND FITNESS FOR A PARTICULAR PURPOSE AND WARRANTIES AGAINST HIDDEN OR LATENT DEFECTS. INsofar AS SUCH WARRANTIES CANNOT BE DISCLAIMED, RABBIT AIR LIMITS THE DURATION AND REMEDIES OF SUCH WARRANTIES TO THE DURATION OF THIS EXPRESS WARRANTY AND, AT RABBIT AIR’S OPTION, THE REPAIR OR REPLACEMENT SERVICES DESCRIBED BELOW. SOME STATES (OR COUNTRIES AND PROVINCES) DO NOT ALLOW LIMITATIONS ON HOW LONG AN IMPLIED WARRANTY (OR CONDITION) MAY LAST, SO THE LIMITATION DESCRIBED ABOVE MAY NOT APPLY TO YOU.

## WHAT IS COVERED BY THIS WARRANTY?

Kinetic Solutions, Inc., d/b/a “Rabbit Air”, located at 125 N Raymond Ave, Suite 308, Pasadena, CA 91103 (“Rabbit Air”), warrants Rabbit Air Products contained in the original packaging against defects in materials and workmanship when used normally in accordance with Rabbit Air’s published guidelines for a period of FIVE (5) YEARS from the date of original retail purchase by the end-user purchaser (“Warranty Period”). Rabbit Air’s published guidelines include, but are not limited to, information contained in technical specifications, user manuals, and service communications.

## WHAT IS NOT COVERED BY THIS WARRANTY?

This Warranty does not apply to any non-Rabbit Air branded hardware products, even if packaged or sold with Rabbit Air hardware. Manufacturers, suppliers, or publishers, other than Rabbit Air, may provide their own warranties to you. Please contact them for further information. Rabbit Air does not warrant that the operation of the Rabbit Air Product will be uninterrupted or error-free. Rabbit Air is not responsible for damage arising from failure to follow instructions relating to the Rabbit Air Product’s use.

Additionally, this Warranty does not apply: (a) to replacement filters, filter frames, filter cases, or wall mount brackets; (b) to consumable parts, such as batteries or protective coatings, that are designed to diminish over time, unless failure has occurred due to a defect in materials or workmanship; (c) to cosmetic damage, including, but not limited to, scratches, dents, and broken plastic, unless such damage has occurred due to a defect in materials or workmanship; (d) to damage caused by use with a third party component or product, including without limitation any replacement air filters not manufactured by Rabbit Air; (e) to damage caused by breakdowns, fluctuations, or interruptions in electric power or by connection to improper power supply; (f) to damage caused by accident, abuse, misuse, fire, liquid contact, earthquake, or other external force; (g) to damage caused by operating the Rabbit Air Product outside Rabbit Air’s published guidelines; (h) to damage caused by service performed by anyone who is not a representative of Rabbit Air; (i) to a Rabbit Air Product that has been modified to alter functionality or capability without the written permission of Rabbit Air; (j) to defects caused by normal wear and tear or otherwise due to the normal aging of the Rabbit Air Product; (k) to Rabbit Air Products marked as “sample” or sold “as is”; (l) if any serial number has been removed or defaced from the Rabbit Air Product; or (m) if Rabbit Air receives information from relevant public authorities that a Rabbit Air Product has been stolen.

## YOUR RESPONSIBILITIES

Rabbit Air tries to honor this warranty in all cases where it has information regarding your purchase; however, Rabbit Air reserves the right not to honor this warranty if it has not been registered within ninety (90) days of your purchase of the Rabbit Air Product. Accordingly, we encourage you to complete the warranty registration form online at [www.rabbitair.com/warranty](http://www.rabbitair.com/warranty). This warranty extends only to the original purchasers who acquire new products from Rabbit Air or its authorized resellers, or to anyone who receives a Rabbit Air Product as a gift, provided we are able to verify who made the purchase. Before receiving warranty service, Rabbit Air or its agents may require that you furnish proof of purchase details, respond to questions designed to assist with diagnosing potential issues, and follow Rabbit Air’s procedures for obtaining warranty service.

warranty service during the first 90 days

To submit a claim under this warranty, please contact Rabbit Air at 1-888-866-8862 or by e-mail at [CustomerService@rabbitair.com](mailto:CustomerService@rabbitair.com). When contacting Rabbit Air via telephone, other charges may apply depending on your location.

If you submit a valid claim to Rabbit Air in accordance with this warranty within ninety (90) days of your purchase of a Rabbit Air Product, Rabbit Air will replace the Rabbit Air Product with the same model (or with your consent a Rabbit Air Product that has similar functionality). For warranty claims within the first ninety (90) days, Rabbit Air offers free shipping both ways within the forty-eight (48) contiguous United States, and free shipping one way to Canada, Hawaii, Alaska, Puerto Rico, Guam, the Virgin Islands, and APO, FPO or DPO addresses (you pay for shipping to Rabbit Air, and we pay for shipping the replacement back to you).

## **WARRANTY SERVICE AFTER THE FIRST 90 DAYS**

If you submit a valid claim to Rabbit Air in accordance with this warranty after ninety (90) days, but during the Warranty Period, Rabbit Air's obligation and liability under this limited warranty is limited to repairing (or, at the sole discretion of Rabbit Air, replacing) the Rabbit Air Product, if in need of repair or deemed defective. When a Rabbit Air Product or part is replaced, any replacement item becomes your property and the replaced or refunded item becomes Rabbit Air's property.

To obtain service under this warranty, please contact Rabbit Air at the phone number or e-mail listed above. A Rabbit Air representative will help determine whether your Rabbit Air Product requires service or needs replacing and, if it does, will inform you how Rabbit Air will provide such service or replacement. In such cases, Rabbit Air may, at its sole discretion, offer free shipping both ways within the forty-eight (48) contiguous United States, or free shipping one way to Canada, Hawaii, and Alaska (you pay for shipping to Rabbit Air, and we pay for shipping the repaired or replaced product back to you).

Please note that any repairs attempted or completed without Rabbit Air authorization will void this warranty.

Rabbit Air reserves the right to change the method by which Rabbit Air may provide warranty service to you, and your Rabbit Air Product's eligibility to receive a particular method of service. Service will be limited to the options available in the country where service is requested. Service options, parts availability, and response times may vary according to country. If you seek service in a country that is not the original country of purchase, you will comply with all applicable import and export laws and regulations and be responsible for all custom duties, V.A.T. and other associated taxes and charges.

## **LIMITATION OF LIABILITY**

EXCEPT AS PROVIDED IN THIS WARRANTY AND TO THE MAXIMUM EXTENT PERMITTED BY LAW, RABBIT AIR IS NOT RESPONSIBLE FOR INDIRECT, SPECIAL, INCIDENTAL, OR CONSEQUENTIAL DAMAGES RESULTING FROM THE USE OF ANY RABBIT AIR PRODUCT OR ANY BREACH OF WARRANTY OR CONDITION, UNDER ANY LEGAL THEORY, INCLUDING BUT NOT LIMITED TO LOSS OF USE; LOSS OF REVENUE; LOSS OF ACTUAL OR ANTICIPATED PROFITS (INCLUDING LOSS OF PROFITS ON CONTRACTS); LOSS OF THE USE OF MONEY; LOSS OF ANTICIPATED SAVINGS; LOSS OF BUSINESS; LOSS OF OPPORTUNITY; LOSS OF GOODWILL; OR LOSS OF REPUTATION.

THE FOREGOING LIMITATION SHALL NOT APPLY TO DEATH OR PERSONAL INJURY CLAIMS, OR ANY STATUTORY LIABILITY FOR INTENTIONAL AND GROSS NEGLIGENT ACTS AND/OR OMISSIONS.

SOME STATES (COUNTRIES AND PROVINCES) DO NOT ALLOW THE EXCLUSION OR LIMITATION OF INCIDENTAL OR CONSEQUENTIAL DAMAGES, SO THE ABOVE LIMITATION OR EXCLUSION MAY NOT APPLY TO YOU.

## **GENERAL**

No Rabbit Air reseller, agent, or employee is authorized to make any modification, extension, or addition to this Warranty. If any term is held to be illegal or unenforceable, the legality or enforceability of the remaining terms shall not be affected or impaired. This Warranty is governed by and construed under the laws of the State of California, and you hereby consent to the exclusive jurisdiction of the state courts in Los Angeles County, California. Rabbit Air or its successor in title is the warrantor under this Warranty. Any future claims regarding your Rabbit Air Product are governed by this Warranty. However, Rabbit Air reserves the right, as a general matter, to change its warranty policies. If you make any future purchases of Rabbit Air Products, those products may be governed by different warranty policies.

## **ADDITIONAL INFORMATION**

Visit [www.rabbitair.com](http://www.rabbitair.com) to learn more, or speak with a Rabbit Air Consultant at 1-888-866-8862, 24 hours a day.