

nutribullet.
PORTABLE BLENDER



User guide.

Important safeguards.

When operating your nutribullet® Portable Blender, remember: **SAFETY COMES FIRST.**

Warning! To avoid the risk of serious injury or damage, carefully read all instructions before operating your nutribullet® Portable Blender. Basic safety precautions, including the following important information, should always be observed when using any electrical appliance.

If you let anyone else use your nutribullet® Portable Blender, ensure they understand the health and safety information in this User Guide and any additional safety or usage instructions. Each person using a device should completely read the User Guide to become familiar with the safe operation of the unit.

! Save these instructions! • FOR HOUSEHOLD USE ONLY

PERSONAL SAFETY



WARNING!

Failure to follow all instructions regarding your nutribullet® Portable Blender may result in serious personal injury, death, or property damage.

DO NOT blend hot, warm, carbonated, or effervescent ingredients.

Remove all utensils and non-food items

from Cup before operating as it may result in bodily injury or damage to the blade and unit.

- Only blend room-temperature, refrigerated or frozen ingredients (21°C or cooler). **Always check all ingredients before blending.**
- Such use may over-pressurize the nutribullet® Cup, causing the Cup and

Motor Base to separate while operating. This may result in bodily injury from expelling hot content or exposed blades.

- Carbonated and effervescent ingredients (e.g., soda, baking powder, baking soda, yeast, some batters, cake mix, dry ice, or other things that become bubbly) release gasses that increase pressure within the Cup when blending. A build up of pressure can cause the cup to separate from the blade expelling the contents of the cup and causing injury. Some protein powders include effervescent ingredients. Always check the ingredients of all supplements before blending.



WARNING! **DO NOT blend contents for more than one minute. Do not run**

consecutive blending cycles that exceed one minute total.

- Blending causes ingredients to heat up, which builds pressure in the Cup over time. Continuous blending for more than one minute may cause the Cup to separate, exposing the blade or expelling heated contents and causing injury.



WARNING! **DO NOT leave blended foods in a sealed cup for prolonged periods of time.**

- Blended mixtures can spoil and ferment, increasing pressure when left inside the Cup. This may cause the Cup to separate if open from the Motor Base, which may result in bodily injury from expelling hot contents or exposed blades.
- Only access the blended contents through the Sip and

Carry Lid by carefully opening the Lid after blending.

- If the Cup is hot or warm to the touch, the contents may be **HEATED** and **PRESSURIZED**. If this happens, take these steps:
 - **LEAVE ALONE, DO NOT OPEN.** Leave the Cup where it is and do not touch it or allow others to touch it. **NEVER** attempt to separate the Cup from the Motor Base as this can result in bodily injury.
 - Do not blend again.
 - Allow the Cup to cool for at least 30 minutes. If still warm, allow for more cooling time.
 - Once cool to the touch, slowly open the Lid, while pointing away from your face and body. Pour contents out into a separate vessel.

- **ALWAYS** ensure the Cup is securely locked on the Motor Base before blending. The motor will not turn on unless the Cup is situated in the locked position.
- **ONLY** operate the unit with the Lid cover in place.
- **DO NOT** exceed the MAX line. Exceeding the MAX line can result in leakage or stop page of the blade.
- **DO NOT** remove the Cup or Lid while the unit is in operation.
- **DO NOT** overfill the Cup with ice as it may stop the blades from turning resulting in damage to the unit or injury. Always make sure the liquid and ingredients do not exceed MAX line before blending.
- Do not use the Cup if you detect cracking, cloudiness, or other damage.

- Do not attempt to defeat any safety interlock mechanisms.
- To avoid the risk of electrical shock, fire or bodily injury, **DO NOT** charge or handle the unit if it is wet, or in an area that could get wet, or handle with wet hands.
- Do not charge your device around flammable materials, on your bed or couch, or on top of any type of paper.
- Only charge your device with the power cord that came with it. Using incompatible parts or aftermarket parts may damage your nutribullet® Portable Blender or create safety hazards that may cause personal injury or damage.
- Do not use a rapid charger or higher wattage charger.

- Failure to take the following precautions can result in serious personal injury, death from electric shock or fire, or damage to your device.
- Don't charge or store batteries or devices on combustible or insulating surfaces such as beds, sofas, or carpet, and keep them away from highly flammable materials such as blankets, clothing, and paper.
- Do not charge in an area of extreme heat or cold.
- Only order replacement parts from:
bulletbrands.com.au / bulletbrands.co.nz
or by contacting Customer Service:
AU: 1300 285 538 / NZ: 0800 232 633.



WARNING! **Blades are sharp! Handle with care to avoid bodily injury.**

- Do not touch the sharp edges of the blades.
- Do not place hands or fingers near the blades when attaching the Cup to the Motor Base.
- Handle with care when washing the blade by hand.
- Always make sure the power is off and the charger is unplugged when assembling, disassembling, or cleaning the blade or Motor Base.
- Do not store the Motor Base with the blades exposed. Always attach the Cup to the Motor Base.



WARNING! **NEVER put your hands inside the cup or near the blade when the unit is running.**

- Do not remove the Cup or Lid until the blades have completely stopped. Blades can still be rotating when the Lid is removed. Not following these instructions may result in bodily injury, property damage, or damage to your unit.
- This appliance is not intended for use by persons (including children) with reduced physical, sensory, or mental capabilities, or lack of experience and knowledge, unless they are closely supervised and instructed concerning use of the appliance by a person responsible for their safety. Close supervision is necessary when any appliance is used by or near children. Children should be supervised to ensure that they do not play with the appliance.

PRODUCT SAFETY



WARNING! **Discontinue use if the blade is bent or damaged.**

- Routinely inspect the blades for damage, and if detected, contact Customer Service for a replacement.
- Do not blend stone fruit in this appliance unless pits/seeds have been removed. Hard ingredients may damage the blade.
- The blades may stop turning if the Cup is overfilled. If this occurs, please refer to the **Errors** section in this User Guide.



WARNING! **DO NOT operate your nutribullet® Portable Blender while driving, operating machinery, cycling, walking, or engaging in other activities that require your undivided attention.**

- Do not expose your nutribullet® Portable Blender to extreme temperatures, as this can cause damage to the batteries, seals, and other parts of the device.
- Do not place your nutribullet® Portable Blender on uneven or unstable surfaces.
- Do not dry your device with a hair dryer, clothes dryer, conventional oven, or microwave oven. If your device becomes wet, gently wipe the exterior with a clean, dry cloth.
- Do not use your device near water or in wet, rainy, or snowy conditions.
- Do not use your device near an open flame or other heat source; near areas of excessive dirt, dust, oil, or chemicals; or in direct sunlight.

- Do not leave your nutribullet® Portable Blender inside your vehicle, especially in the summer or winter. Prolonged exposure to extreme temperatures can cause the batteries to rupture, or explode
- Periodically inspect your nutribullet® Portable Blender components for damage or wear that may impair proper functioning or create a safety hazard.
- Be aware of possible hazards when charging, using, or storing your nutribullet® Portable Blender.
- Do not use this blender for anything other its intended use.
- Never operate your nutribullet® Portable Blender if the Cup is empty.
- Do not insert any object other than the appropriate charger into the USB-C port.

Do not allow dust to accumulate inside the port.

- Do not crush, drop, or damage the Motor Base. Do not operate if the Motor Base is damaged in any manner. Contact Customer Service for assistance by visiting **bulletbrands.com.au / bulletbrands.co.nz.**
- Use only nutribullet® attachments/ accessories specifically designed for your nutribullet® Portable Blender. Always use genuine nutribullet® replacement parts and accessories. Aftermarket parts are not made to nutribullet® specifications and may damage your unit or cause serious injury.
- The use of attachments including canning jars, is not recommended by the manufacturer may cause a risk or injury to persons.

- Do not attempt to clean the Motor Base by immersing in water or other cleaning liquids. Only gently wipe and dry with a clean cloth.
- Only the Cup and Lid are dishwasher safe on Top Rack without the heat or sanitize cycle. **NEVER PLACE THE MOTOR BASE IN THE DISHWASHER.**



WARNING!

Modification, improper use, and failure to follow instructions can increase the risk of serious personal injury, death, or property damage.

CHARGING YOUR PORTABLE BLENDER

The blender's battery can be charged using the USB cable provided and a compatible power supply unit (PSU). Charging the battery using an incorrect PSU can cause damage to the battery, including

overheating, that can lead to fires.

- Place the blender on a flat surface close to the USB power outlet.
- Connect the motor base to the USB power outlet port by using the USB cable supplied. Ensure the cable is fully unwound.
- Disconnect the USB cable from the USB port and the motor base once the portable blender is charged. If using a USB PSU, switch off the power from the power point and unplug the USB power adaptor prior to disconnecting the USB cable.
- Use only approved power supplies rated 100V to 240V certified for General Purpose use to charge this device. The PSU's rated output should be **5V 2A MAX.** Do not use non approved PSU's.

- Do not use in wet conditions, or immerse the cord, plug, or Motor Base in water or other liquids.
- Do not operate with a damaged cable or appliance malfunction, or if or if the Motor Base has been dropped or damaged in any manner. Contact Customer Service for assistance by visiting bulletbrands.com.au / bulletbrands.co.nz.
- Always **POWER OFF** and **DISCONNECT** the nutribullet® Portable Blender when it is not in use, and **BEFORE** assembling, disassembling, changing accessories, or cleaning.



WARNING! Use only the power cord that came with your nutribullet® Portable Blender to charge.

- Exposed device cables and cords pose a

potential tripping hazard. Arrange all cables and cords so that people and pets are not likely to trip over or accidentally pull on them as they move around or walk through the area.

- When positioning your device or Power Supply Unit/Charger, ensure that the cords are not bent sharply and that the connectors are not pushed against a wall or hard surface.
- Do not allow pets or children to bite or chew on cables and cords.
- When disconnecting the power cord, pull on the plug—do not pull on the cord.
- Do not let the charging cable touch hot surfaces or any extreme heat source, or become knotted, tangled, or frayed.
- Do not grab or carry your device by the charging cable or cord.

- Do not let the charging cable hang over the edge of a table or counter.

LITHIUM-ION BATTERIES



- **Your nutribullet® Portable Blender contains rechargeable Lithion-Ion batteries. The batteries are not replaceable and must be recycled or disposed of properly. Consult your local council for information regarding available recycling and/or disposal options. Improper disposal may result in injury, death, or property damage as a result of fire, overheating, or explosion. Lithium-Ion batteries contain elements that may pose health risks to individuals if they are allowed to leach into the groundwater supply.**

- **The motor base is equipped with a Lithium-Ion battery, and it is very important to never dispose of it in regular household waste. Lithium-Ion batteries in compacting rubbish trucks pose a risk of ignition.**
- **Opening and/or repairing or attempting to replace the batteries to your device can cause electric shock, device damage, fire, and personal injury, or property damage.**
- Do not expose the Motor Base containing the Lithion-Ion battery pack to fire or excessive heat. Exposure to fire or temperatures above 130°C may damage the batteries and cause an explosion.
- Do not recharge your nutribullet® Portable Blender near a fire, heat source, or in extremely hot conditions.

- Recommended storage and ambient charging temperature: 10°C–40°C.
- Do not use your unit in any area with a potentially explosive atmosphere (e.g., fueling areas or fuel service stations, below decks on boats or other vessels, fuel and/or chemical transfer and storage facilities, and areas where flammable chemicals or particles, such as grain dust or metal powders have collected in the air). In such areas, sparks can occur and cause an explosion or fire.
- Do not use your unit if the Motor Base is overheated, has an odor, is bulging, or changes in color/shape.

**! Save these
• instructions!**



Contents.

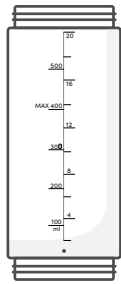
- 16 What's included**
- 17 Assembly guide**
- 18 LED light indicator status**
 - 18 Charging
 - 19 Settings
 - 20 Errors
- 22 Using the nutribullet®
Portable Blender**
- 24 Care and maintenance**
 - 24 Replacement parts
- 26 One-year limited warranty**

Thank you for purchasing the nutribullet® Portable Blender.

What's included.



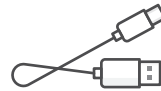
motor base



590ml cup



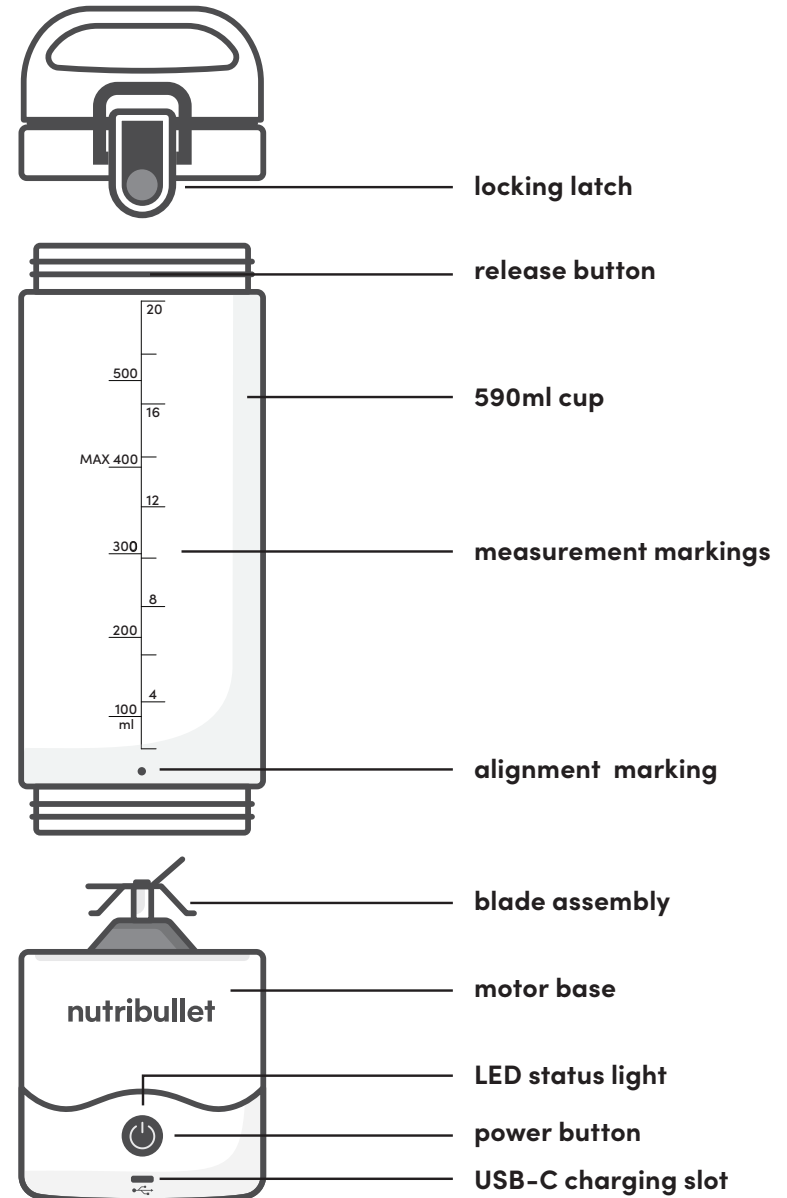
to-go lid



USB-C
charging cable

Product configurations may vary. To see our full list of nutriBullet® accessories please visit bulletbrands.com.au / bulletbrands.co.nz.

Assembly guide.



Before first use.

CLEAN UNIT:

See **Care and Maintenance** section on page 24.

CHARGE UNIT:

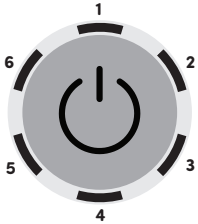
Plug the smaller end of the included **USB-C Cable** into the slot right below the **Power** button (on the front of the **Motor Base**) and the larger end of the cable into the General Purpose Power Supply.

- We recommend fully charging the unit before using it for the first time. It takes 60-90 minutes to reach a full charge.

Please see **LED Status Light Indicator** section on pages 18-20.

! WARNING! Do not charge if your unit or the USB-C port is wet to avoid risk of fire or bodily injury.

LED light indicator status.



The nutribullet® Portable Blender's indicator has six LED light bars that appear red or blue according to the unit's operational status. See below for details.

Charging.



No power
All LEDs off.



Charging
LEDs blink to solid blue in clockwise order.



Low power
LED 1 flashes red.



Fully charged
All LEDs light solid blue.

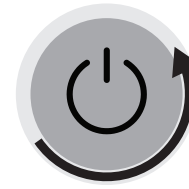
Settings.



Wake
Press button once to wake up your blender. When the ring is solid blue, you are ready to blend.



Blend mode
Blue LEDs circulate clockwise. Press the **Power** button to start a 20-second cycle.

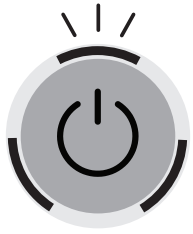


Sleep
After 2 minutes of inactivity, your blender will automatically go into sleep mode. When the ring is off, the blender is off.



Battery check
Press and hold the **Power** button for 2 seconds to check the battery level remaining.

Errors.



Too many blends

Light ring will flash red, alternating between top and bottom LEDs.

Solution: Pause activity and allow blender to cool before next use. Don't exceed 9 blending cycles within 6 minutes.



Overheat

Light ring will turn red.

Solution: Pause activity and allow blender to cool before next use.



General error

Light ring will flash red.

Troubleshooting:

Make sure your Cup is secured and aligned properly.

If the blade is blocked, then try the following:

- Add more liquid to the Cup and try blending again.
- Shake blender or turn upside down to remove blockage.
- Turn unit off and remove blockage from blade using a utensil.

⚠ WARNING!

Before first use, review all warnings and caution statements in the important safeguards section (pages 2-13).

ALWAYS make sure your blender is clean and charged before use.

Fully charge your blender before first use. The charging port is located under the light indicator of the **Motor Base**. (See the assembly section on page 17 for reference.)

DON'T run your nutribullet® Portable Blender when empty.

DON'T microwave any nutribullet® accessories.

DON'T leave your nutribullet® Portable Blender unattended when in use.

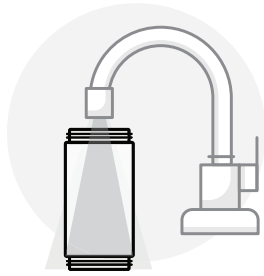
DON'T charge your nutribullet® Portable Blender if your **USB-C Cable** is wet.

DON'T use hot or warm ingredients in your blending cup. Heated ingredients can cause pressure to build up in the sealed cup that may expel hot contents upon opening, potentially causing personal injury or property damage.

NEVER run the nutribullet® Portable Blender for more than one minute at a time, as it can cause permanent damage to the motor. If the motor stops working, pause activity and allow the blender to cool. Your nutribullet® Portable Blender has an internal thermal breaker that shuts the unit off when it overheats. Letting the thermal breaker cool down should allow it to reset.

ALWAYS inspect your blade. During the warranty period, contact Customer Service before removing the blade for safety instructions and replacement.

Using the nutribullet® Portable Blender.



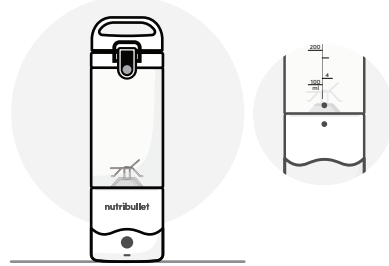
- 1 Clean **Blending Cups** with hot, soapy water before use.

NOTE: You can also clean your blender by adding cold water and a drop of soap to the **Cup** and blending for one cycle.



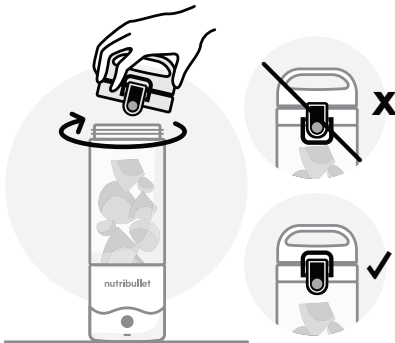
- 3 Twist off the **Lid** and add your ingredients.

WARNING! For best performance, do not exceed the **MAX** line, do not overfill, and use sufficient liquid ingredients.



- 2 Place the **nutribullet® Portable Blender** on a clean, dry, and level surface.

NOTE: Ensure the **Cup** is positioned properly by aligning the two dots located on the **Cup** and **Motor Base**.



- 4 Twist the **Lid** back onto the **Cup**.

NOTE: Make sure the **Lid Latch** is upright in the locked position.



- 5 Wake up your blender by pressing the **Power** button once. Wait about 1 second for the light animation to complete.

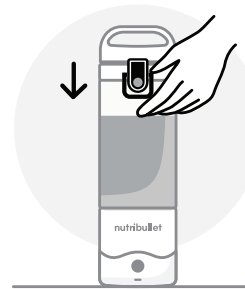
NOTE: After 2 minutes of inactivity, your blender will automatically go into **Sleep Mode**. This prevents accidental blends and preserves battery life.



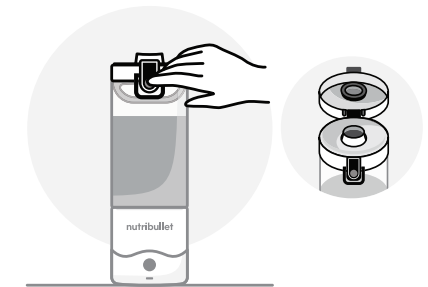
- 6 Once your blender is awake, press the **Power** button again to start a 20-second blend cycle.

If you want to **Pulse** your ingredients or stop your blend cycle early, press the **Power** button again to stop.

WARNING! Do not blend for longer than one minute to avoid excessive heat and pressure build-up. For repeat cycle, carefully open the container to release any built-up pressure before blending again.



- 7 Once blending is complete, flip the latch down to unlock the **Lid Latch**.



- 8 Press the button on the **Lid** to open and reveal the spout. Enjoy!

Care & maintenance.

STEP 1:

Always make sure the nutribullet® Portable Blender is turned off after each use.

STEP 2:


Hand-wash the Cup and Lid with warm, soapy water and rinse clean:

NOTE: The Motor Base is **NOT** dishwasher safe. However, the Cup and Lid can be washed in the top rack of your dishwasher without the heat or sanitize cycle.

STEP 3:

Gently rinse the blade assembly and wipe with a damp sponge or cloth.

NOTE: Never submerge or run the Motor Base under water.

 **WARNING! Do not touch blades! They are very sharp.**

 **WARNING! Do not blend hot or warm liquids.**

 **WARNING! Never submerge the Motor Base into water or any other liquid.**

STEP 4:

Always store your nutribullet® Portable Blender in a safe place, upright with the Cup attached, so that the blades are covered and not exposed. Do not stack any objects on top of the unit while storing.

Replacement parts.

To order additional parts and accessories, please visit our website at:

bulletbrands.com.au
bulletbrands.co.nz

CDB GOLDAIR

one (1) year limited replacement warranty statement.

If your product becomes defective due to faulty material or workmanship within a period of 1 year from the date of purchase, we warrant to do the following:

- **For New Zealand Consumers:**
We will replace the product with a new product, free of charge, or repair the product at our cost, at our discretion.
- **For Australian Consumers:**
Our goods come with guarantees that cannot be excluded under the Australian Consumer Law. You are entitled to a replacement or refund for a major failure and for compensation for any other reasonably foreseeable loss or damage. You are also entitled to have the goods repaired or replaced if the goods fail to be of acceptable quality and the failure does not amount to a major failure.

YOUR WARRANTY IS SUBJECT TO THE FOLLOWING CONDITIONS:

- **DO NOT** operate the appliance with a damaged plug or cord, or if the unit has been dropped, damaged or dropped in water. To avoid the risk of electric shock, do not disassemble or attempt to repair the appliance on your own. If the supply cord is damaged, it must be replaced by a qualified electrician in order to avoid a hazard. Incorrect re-assembly or repair can cause a risk of electric shock or injury to persons when the appliance is used.
- The item has not been misused, abused, neglected, altered, modified or repaired by anyone.
- The item has been subjected to fair wear and tear.
- The item has not been used for trade, professional or hire purposes.

- The item has not sustained damage through foreign objects, substances or accident.

YOUR WARRANTY DOES NOT COVER:

- Components that are subject to natural wear and tear caused by normal use in accordance with operating instructions.
- Unauthorised/improper maintenance/handling or overload is excluded from this warranty.
- For guarantee claims, you will need to submit a proof of purchase in the form of a valid receipt that displays date and place of purchase.

This warranty does not replace but is in addition to your statutory rights.

This warranty does not apply to accessories supplied with the item.

This warranty applies only to the original purchaser and may not be transferred.

Replacement items will be covered by the limited warranty for the balance of the warranty period from the date of the original purchase.

PLEASE NOTE:

Only the defective product or parts returned to place of purchase will be replaced under this warranty.

CDB GOLDAIR

NEW ZEALAND
PO Box 100-707
NSMC
Auckland 0745
0800 232633
bulletbrands.co.nz

AUSTRALIA
PO Box 574
South Morang
Victoria 3752
1300 285538
bulletbrands.com.au

nutribullet® is a registered trademark of CapBran Holdings, LLC.
Copyright © 2023 CapBran Holdings, LLC. All rights reserved.
Los Angeles, CA 90025, USA. Made in China.

MODEL: (NBG-200) NB07400

RATING: 7.4Vdc 100W IPX4

USB INPUT FOR CHARGE: 5V \equiv 2A 10W



Capital Brands Distribution, LLC | All rights reserved.

nutribullet® Portable Blender is the trademark of CapBran Holdings, LLC registered in the U.S.A. and worldwide.

Illustrations may differ from the actual product. We are constantly striving to improve our products, therefore the specifications contained herein are subject to change without notice.

230620_NB0400