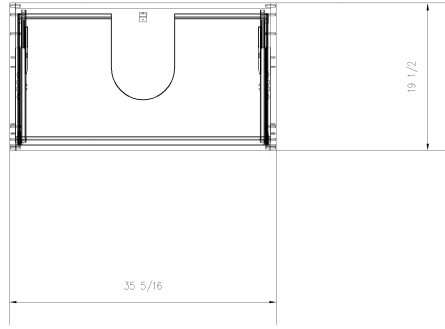
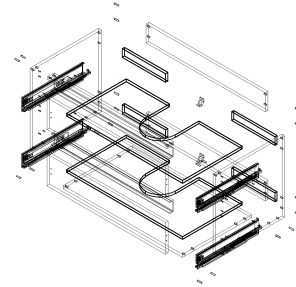


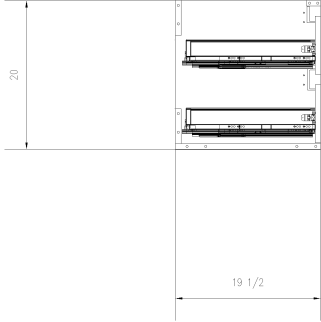
Isometric view
Realistic



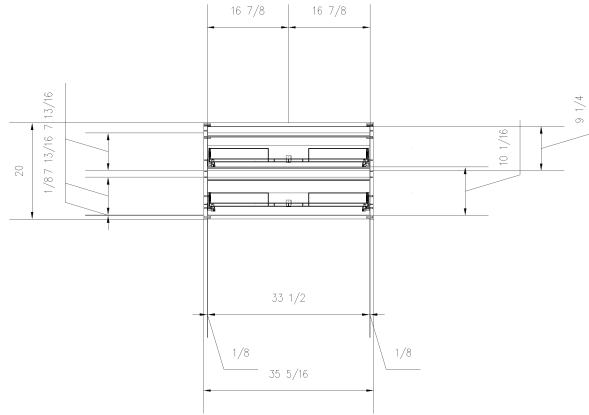
View from top: 1:10@A3
2D Wireframe



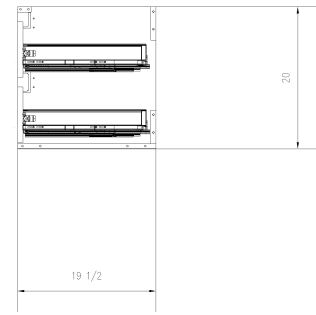
Exploded view
X-Ray



View from right: 1:10@A3
2D Wireframe



Front view: 1:10@A3
2D Wireframe



View from right: 1:10@A3
2D Wireframe

Article 1	Article 6	Article Height	20	Ordermaster 1	Address 1	Date	10/18/2021	Article Name	VH2DBL2_GOLA	Page	1
Article 2	Article 7	Article Width	35.3	Ordermaster 2	Address 2	Current		Manufacturer	Article Designer Group	Sum	
Article 3	Article 8	Article Depth	19.5	Ordermaster 3	Address 3	Material		Standard	STANDARD	Sum	1:340,3
Article 4	Article 9	Article Weight	0	Ordermaster 4	Zip	Delivery					
Article 5	Article 10	Ordermaster / Weight / Package	10	Ordermaster 5	Notes						

Order No	Line No	Legend ID				
3058	10		GS98R - Cream			
Design Code	Description	Style Pull	Height	Width	Depth	
GOLAVHDSB35.3	Vanity Hanging Drawer Sink Base 011	GSS - Gola SS	20	35 5/16	19 1/2	
NH - None						

Components						
ICN	Item Description	Material	X	Y	Z	
	Right Gable	Cream	20	19 1/2	3/4	
	Left Gable	Cream	20	19 1/2	3/4	
	Bottom with holes	Cream	33 3/4	19 1/2	3/4	
	Front Rail	Cream	33 3/4	1 7/8	3/4	
	Back Panel	MPECORE	19 1/4	33 3/4	3/4	
	Back Rail	Cream	33 3/4	4 11/16	3/4	
	Back Rail	Cream	33 3/4	4 11/16	3/4	
	Door	Cream	7 13/16	33 1/2	3/4	
	Door	Cream	7 13/16	33 1/2	3/4	
	Drawer Bottom	GSDE6.16.D	32 7/8	16 7/8	5/8	
	Drawer Back	MPECORE	32 7/8	2 1/8	5/8	
	Drawer Back	GSDE6.16.D	12 1/4	2 1/8	5/8	
	Drawer Back	GSDE6.16.D	12 1/4	2 1/8	5/8	
	Drawer Bottom	GSDE6.16.D	32 7/8	16 7/8	5/8	
	Drawer Back	MPECORE	32 7/8	2 1/8	5/8	
	Drawer Back	GSDE6.16.D	12 1/4	2 1/8	5/8	
	Drawer Back	GSDE6.16.D	12 1/4	2 1/8	5/8	