
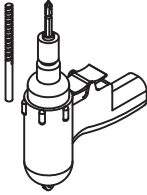

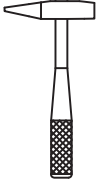



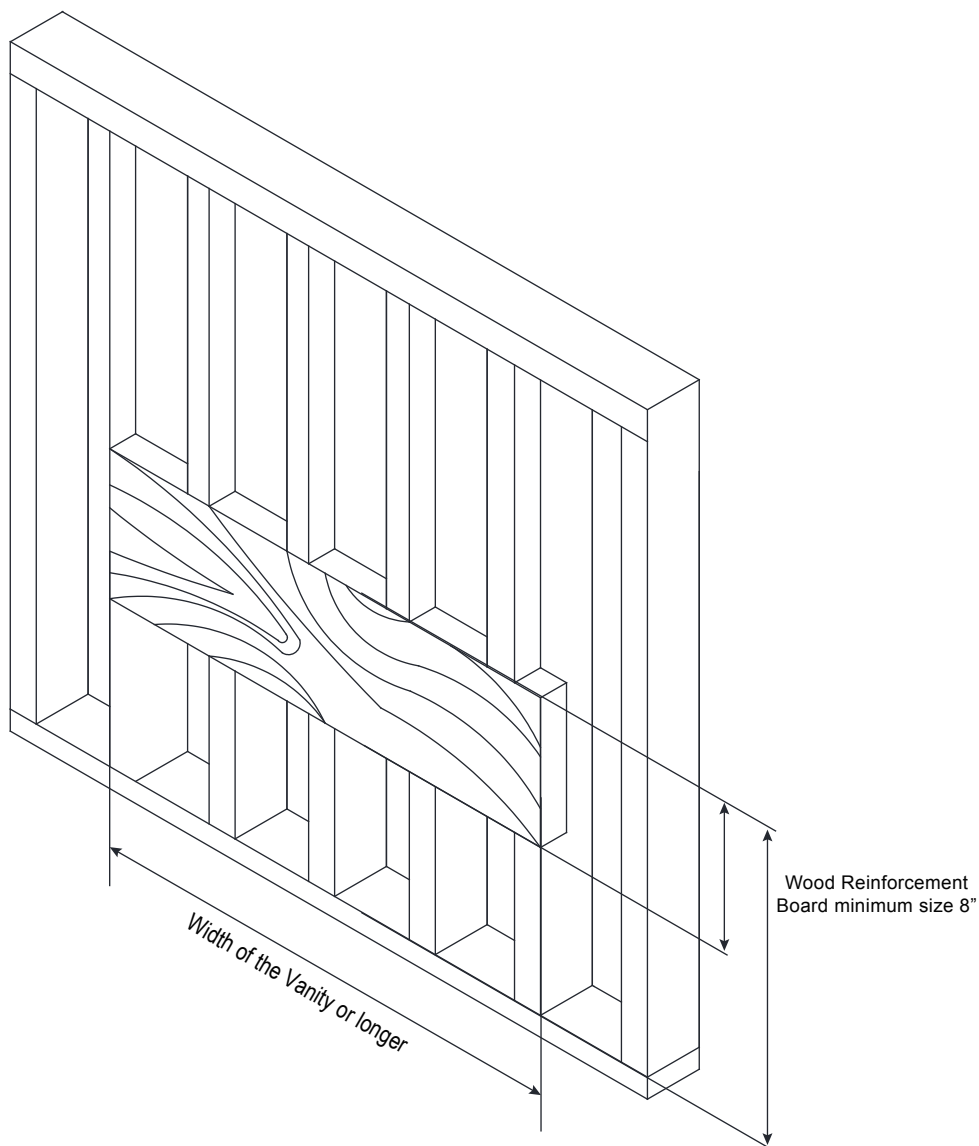


CHIARA FLOATING VANITY ASSEMBLY INSTRUCTIONS

Hardware				Tools (not includes)		
No.		Draw	Qty			
A	Anchors		6 pcs	  		
B	Lag Bolt (5CM)		6 pcs			
C	Lag Bolt (8CM)		5 pcs			
D	Leveling Bracket		2 pcs			

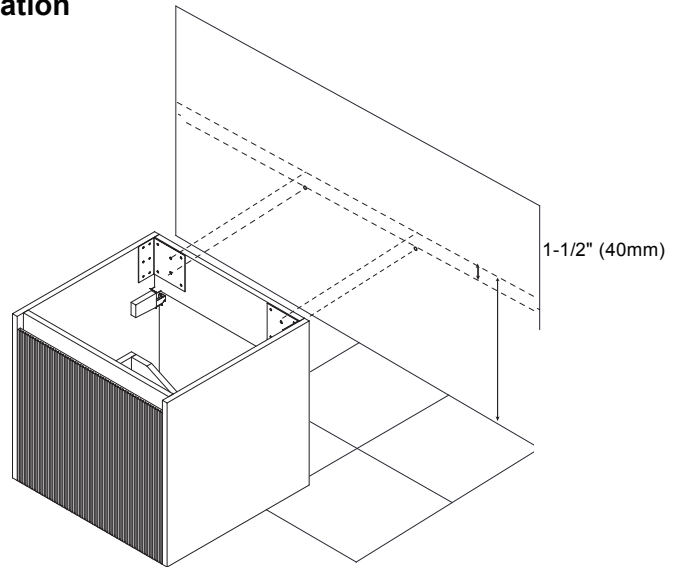
Wall Preparation

The suggested heights without the sink are 30-5/8" for Blossom Resin Basin, or 32-5/8" for Blossom Ceramic Basin. Depending on the sinks selected, the total height will vary from 33-1/2" (850mm) to 35-1/4" (895mm). If an alternate height desired, adjust the rough-in and backing material heights using the dimensions provided.



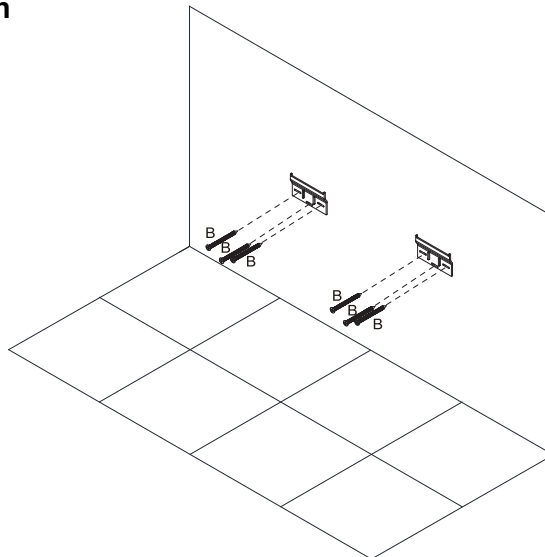
STEP 1. Cabinet positioning and installation

- The suggestion height of vanity installation is 30-5/8" (780mm) for Resin Basin or 32-5/8" (830mm) for Ceramic Basin - not including the basin.
- The height of Leveling Bracket Installation is 26" (660mm) for Resin Basin or 28-1/8" (715mm) for Ceramic Basin.



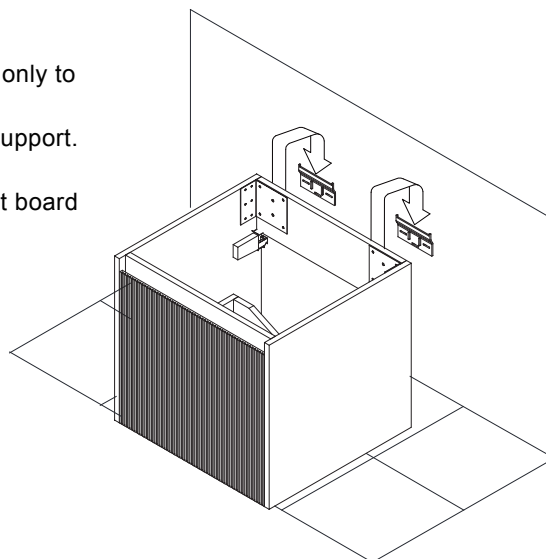
STEP 2. Leveling bracket installation

- Install leveling bracket after determining the height of vanity.



STEP 3. Hang the cabinet on the leveling bracket and adjust it horizontally

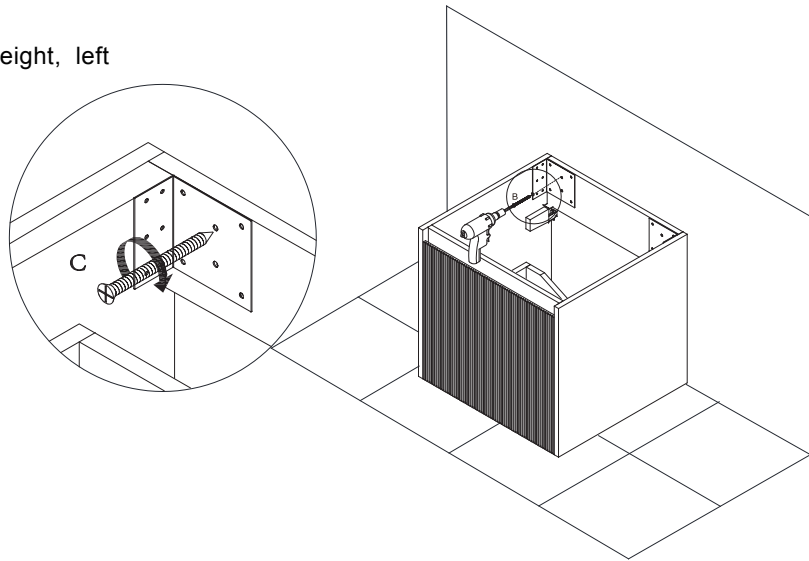
Place vanity on leveling bracket, Leveling brackets are only to level the vanity. They are not designed for permanent support. Vanity needs to be secured into the wood reinforcement board through the corner metal L - bracket.



STEP 4.

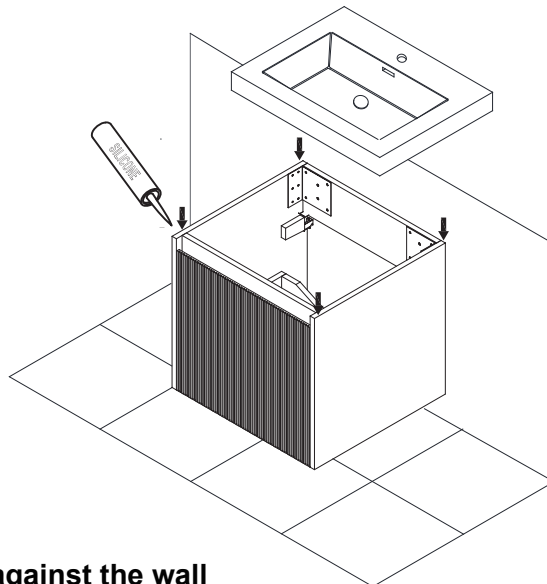
Fixed Cabinet

Install Lag Bolt after determined the height, left
& right position then fix the Vanity.



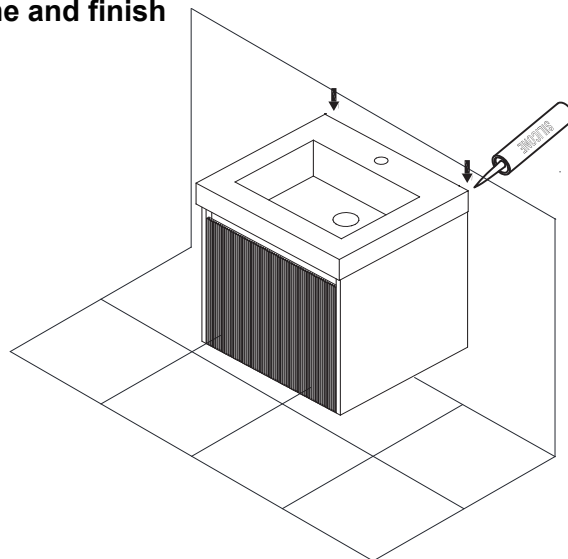
STEP 5.

Install sink top with Silicone



STEP 6.

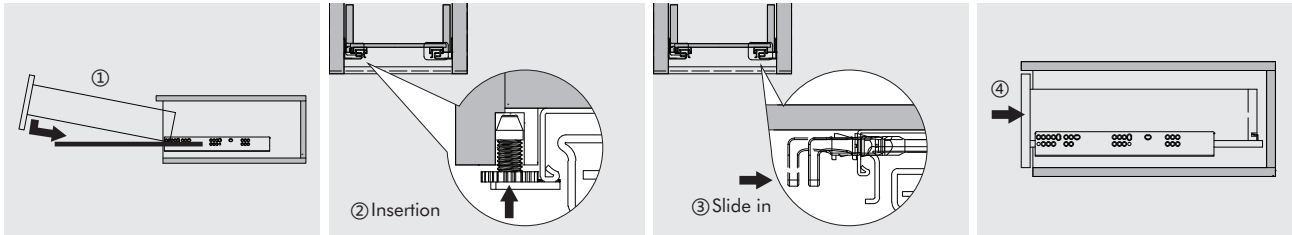
Fill the side against the wall with Silicone and finish



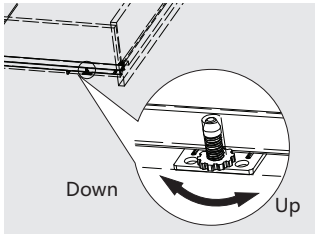
Unihopper DRAWER/HINGE ADJUSTMENT AND REMOVAL

Unihopper general drawer/hinge adjustment and removal

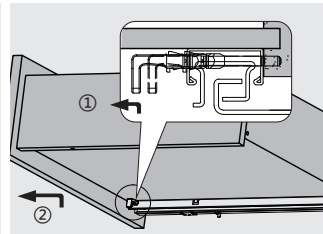
Installation



Adjustment

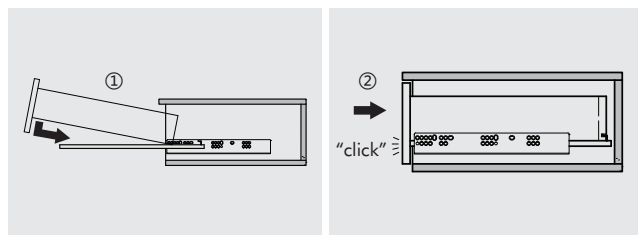


Removal

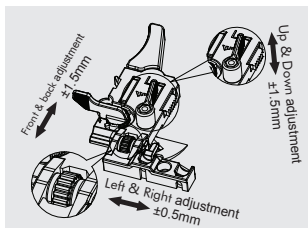


Unihopper Quick Assembly Drawer Slide

Installation



Adjustment



Removal

