



CINDI® FAMILY

Art.no 1228-01

CINDI® family is a incineration toilet that incinerate the toilet waste at high temperature. The only thing left is a small amount of ashes that can be disposed of in household waste or used as a nutrient. The toilet is approved for installation in bathrooms (IP-Class 44) and works equally well in a cold as in a warm space. No water or drain required.

A magnet sensor automatically turns off the incineration (element) when the lid is opened or when the toilet is used and resumes the program when the lid closes after the visit.

Capacity:

CINDI® family has capacity for a household with up to six people. It is adapted for holiday homes.

EASY TO USE



FLUSH

Place the bag on the flap under the toilet seat. When you've done your business use the flush lever



PANEL WITH DISPLAY

Press the appropriate incineration program after each visit. Press the yellow drop for urine or brown poo for solid waste. The display shows the status of the toilet and with a simple menu access, you can set everything from language to incineration time.



EMPTY THE ASH PAN

Remove the front cover, pull out the ash pan and empty it.



EVERYONE CAN USE CINDI

Sally child seat is included when you buy the CINDI® family. It makes the toilet visit comfortable even for the smallest members of the family.

EASY TO CLEAN

In addition to normal cleaning with a damp cloth, the display will show when it is time to clean the ash pan. This is done by emptying the ash first, then pour 1 liter of water into the potty and finally start a program. It also tells when the smoke pipe needs to be sooted, using the cleaning brush that comes with the toilet.

INCLUDED WITH THE CINDI® FAMILY

- Long bend Ø110 mm 90° - Cleaning brush - Dim. drawing
- Sally Child Seat - 500 pcs bags - Vent cowl - Chisel - O-rings
- Extra fuses

SUPPLEMENT WITH

- 1218-01 Bag holder* - 1199-01 Cleaning kit** - Installation material***



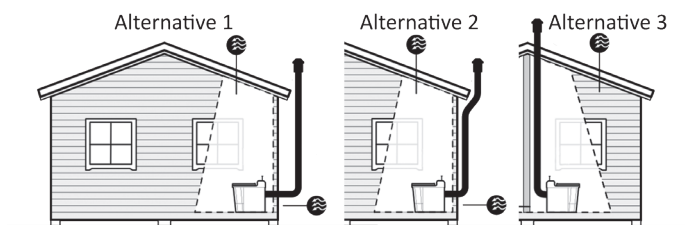
* The bag holder makes the use of the CINDI® family easier by ensuring that disposable bags are easily accessible during the visit.



** The cleaning kit contains everything you need to keep the incinerating toilet clean and fresh and ensure the function over time.

INSTALLATION

To achieve a good incineration, it is important that the CINDI® family is installed correctly, according to the enclosed installation instructions. There are three alternative installations, all of which require that at least one of the walls in the space is an outside wall, choose the option that suits your requirements. *We recommended that a separate residual current device installed.*



⊗ Air vent must be placed on an outer wall! If placed directly behind the toilet, below the ventilation pipe minimum Ø 110 mm. If placed elsewhere minimum Ø 160 mm.

If installed according to alternative 1 or 2 there must be at least 100 mm between the toilet and the wall. If installed according to alternative 3 the distance between the toilet and the wall increases to about 300 mm due to the 90° long radius bend that must be used.

*** You'll need the following installation materials

Alternative 1 & 2:

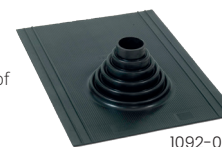
- 1181-01 Ventilation kit incinerating

Alternative 3:

- 1181-01 Ventilation kit incinerating
- 1092-01 Roof flashing, tarred/tiled roof



Included in the ventilation kit:
- 4 m pipe (4x1m) - 2 pcs 45° connectors
- 3 pcs connector pipes - Wall brackets
- Silicone - Fresh air vent 150x150 mm



TECHNICAL DATA

CINDI® FAMILY	Material	Inner container	Voltage/Wattage	Energy Consumption	Electricity Connection	Noise level fan	Pack. size/weight
	Recyclable ABS. White enamelled galvanised plate	Inner part: Stainless plate. Ash box: Acid-proof plate	230 V, 18 kW, 10 amp. fuse	0.4-17 kWh/visit	2.5 m cord with grounded plug	Ca 55 dB(A) 150 kg	L:77 W:46 H:73 cm 42 kg

Connections

Ventilation out from the toilet: Ø110 mm

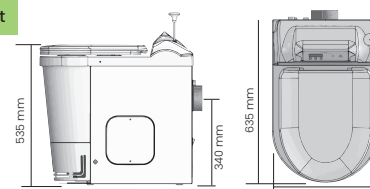
Ventilation in to the space where the toilet is installed: Ø110 mm/160 mm depending on the position.

Warranty 3 year

The 3-year warranty does not include wear parts. These have an individual warranty period. Element 1 year, ash pan 2 years, thermo coupling 2 years.



All our electrical products are ETL and/or CE marked. Further information about the products can be found on our website, www.separett.com



Separett®
Waterless toilets