

# GEJST

## NIVO

by Böttcher & Kayser

Instruction

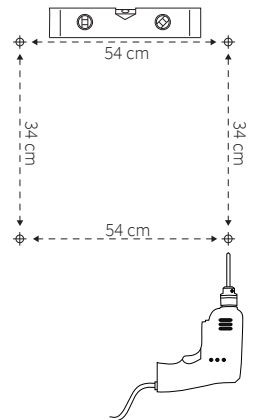
①

Make markings on the walls according to the drawing.

Drill a 6 mm hole in each of the four markings.

Marker på væggen hvor de fire skruer skal sidde.

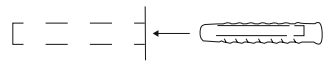
Bor et 6 mm hul i hver af de fire markeringer.



②

Insert rawplugs in all four holes.

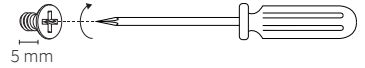
Indsæt rawplugs i alle fire huller.



# GEJST

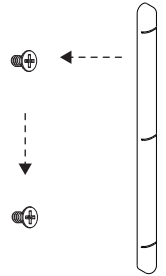
- ③ Fasten the screw 5 mm from the wall.

Skru skruen i, så den er 5 mm fra væggen.



- ④ Place the pole on top of the screws and slide it downwards onto place. Repeat with the other pole. Make sure the poles are facing the correct way.

Placer stolpen vertikalt over skruerne, og skub den ned til den ikke kan komme længere. Gentag med den anden stolpe. Sørg for at stolperne vender den rigtige vej.



- ⑤ Place the first shelf in the slits on the poles, so the holes in the shelf is covered by the center of the slits.

Repeat with the other two shelves.

Placer en hylde i rillerne på stolperne, så hullerne i hylden er centreret i rillen.

Gentag med de to andre hylder.

