

Pop Quiz! ★



ROUND 2

An intereractive questions game!



National Mah Jongg League Rule Play



Facebook.com/groups/MahjongCommunity
ModernMahjong.com

Round Two
Future Rounds will increase in difficulty

Round 2

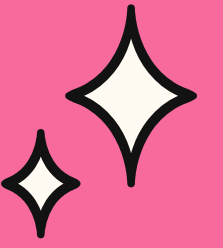
Question 1

When are you committed to discarding a tile?

- a. when a tile is named
- b. when a tile is fully named
- c. when a tile is placed on the table
- d. b or c
- e. all of the above

Question 2

When are you committed to claiming a Discard?



When you say "Call?"

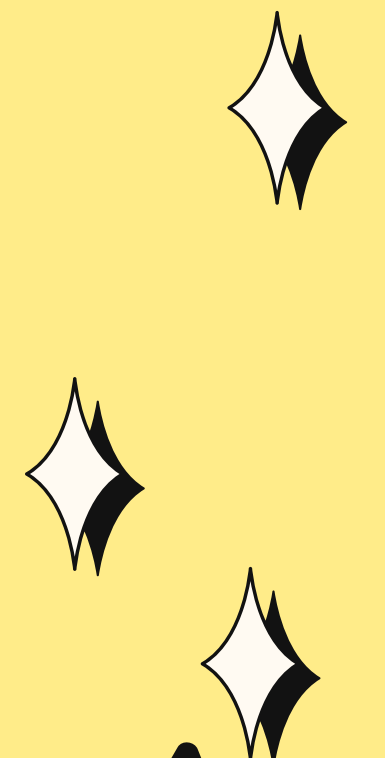
When you touch the tile?

When you place the tile on your rack?

When you expose tiles from your rack?



Question 3 Which is true?



A

A player is committed to picking a tile from the wall if they touch it.

B

A player is committed to picking a tile from the wall if they moved the tile in any way. A player can change their mind if the tile has been merely touched.

C

A player can change their mind about picking a tile from the wall at any time before they discard a tile. They can pick it up, place it in their rack and then change their mind and put it back.

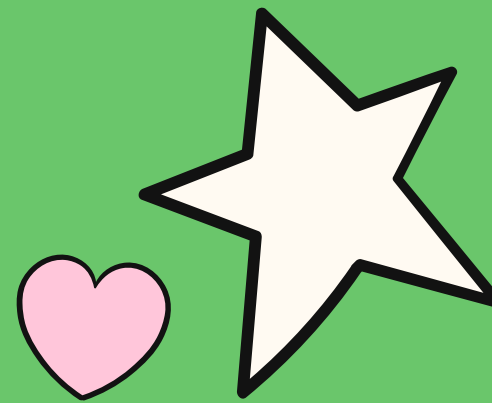


Question 4

Are these statements:

True

False



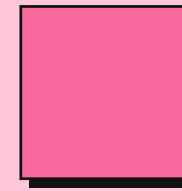
There is no requirement of a Natural Tile in a grouping of three or more identical tiles when you display your Mah Jongg.

A Pung (three identical tiles), Kong (four identical tiles) or higher can be all Jokers.

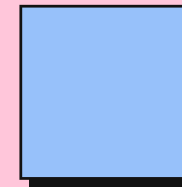
Question 5

When does the window of opportunity to call a discard close?

Select as many as apply.



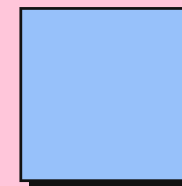
When the next tile is fully named.



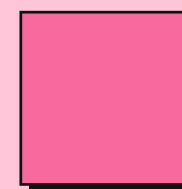
When the next tile is placed on the table.



When the player next in turn racks their tile.



When Mah Jongg is called - Congratulations!



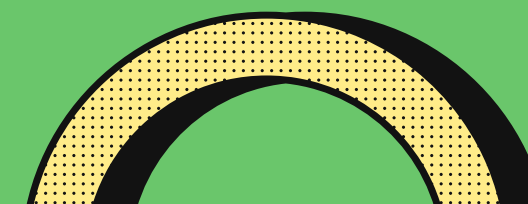
When a Joker exchange is initiated.

Video Clue:



Question 6

In this video clue (or if viewing as a PDF – if a player taps on the top of their rack) does tapping close the window to call the prior discard?



Question 7

Place these five actions in the proper order for a Joker exchange!

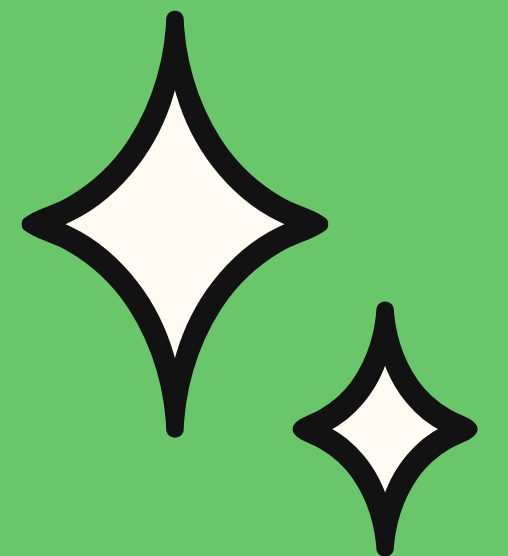
Initiate a Joker exchange

Discard

If call,
make an
exposure.

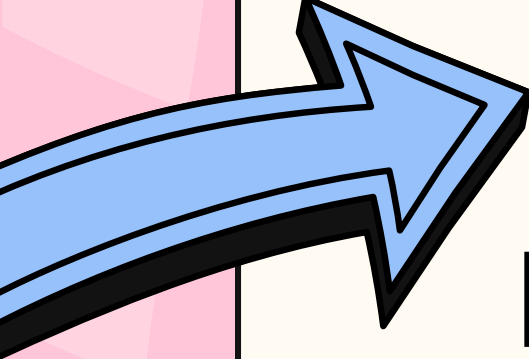
Pick or Call

Place the Joker
in the sloping
part of your rack




Question 8

True or False?

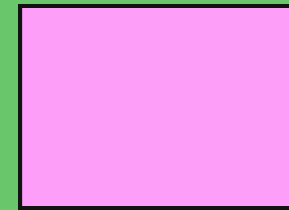


A player can call someone else's hand Dead for not being a winnable hand based on tiles in their own hand.



Question 9

True or False about Exchanging Jokers from a Dead Hand:



You cannot exchange any Jokers when a hand is declared Dead.



You can exchange Jokers exposed prior to the hand being declared Dead.

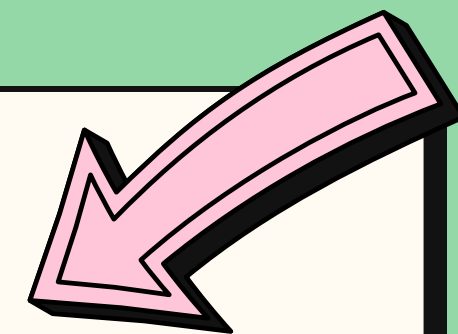
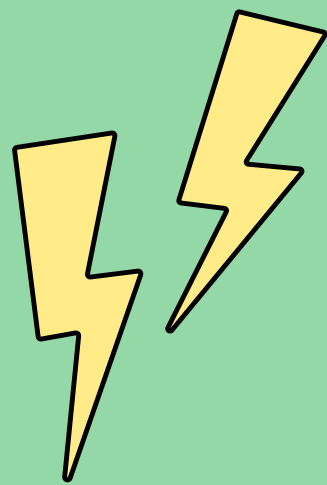


You can exchange Jokers from prior exposures (that would have been valid) in a Dead hand because Mah Jongg in Error for being a Concealed hand.



Jokers in an exposure that made the hand dead are not available for exchange.

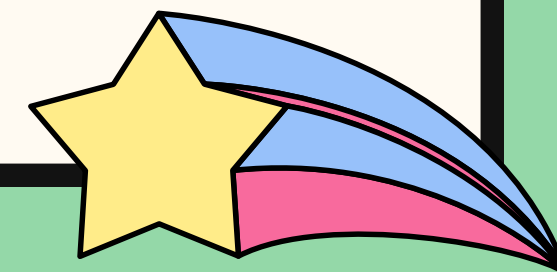
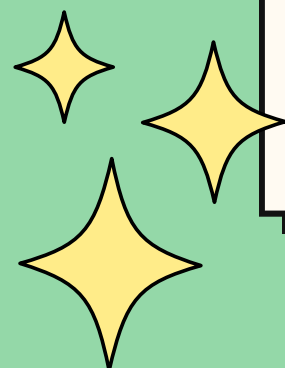
Question 10



YES

NO

If a player exchanges a tile for a Joker and then declares Mah Jongg, is it self-picked?



★ *Let's Stay Connected!* ★

Sign up for our informative
Newsletter on ModernMahjong.com

Connect with us on Social Media!

★  [groups/MahjongCommunity](https://www.facebook.com/groups/MahjongCommunity)
and [@ModernMahjong](https://www.facebook.com/ModernMahjong)

 [@ModernMahjong](https://www.instagram.com/ModernMahjong)

[YouTube.com/ModernMahjong](https://www.youtube.com/ModernMahjong)

*We hope you enjoyed our
Pop Quiz - Round 2*

Stay tuned for the next Round.
Questions will increase in difficulty of knowledge of
rules and strategy!

If you have questions that should be
included in Round 3, please email us at
ModernMahjong@gmail.com !

For more rule posts, visit our
Rules and Strategy Tab on ModernMahjong.com.

Thanks for playing along!

**Subscribe to
YouTube.com/ModernMahjong**

**We appreciate your support of
our women-owned small business,
ModernMahjong.com.**

**We have beautiful
Mah Jongg gifts and accessories!**

**Facebook.com/groups/MahjongCommunity
ModernMahjong.com**

