

*Pop Quiz!* ★



**ROUND 2** ★

An intereractive questions game!



**National Mah Jongg League Rule Play**



Facebook.com/groups/MahjongCommunity  
ModernMahjong.com

Round Two  
Future Rounds will increase in difficulty

*Round 2*

*Question 1*

When are you committed to discarding a tile?

- a. when a tile is named
- b. when a tile is fully named
- c. when a tile is placed on the table
- d. b or c
- e. all of the above



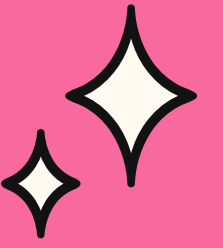
# *Answer #1*

You are committed to discarding a tile

- b. when a tile is fully named
- c. when a tile is placed on the table
- d. b or c

## *Question 2*

*When are you committed to claiming a Discard?*



When you say "Call?"

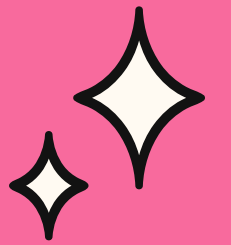
When you touch the tile?

When you place the tile on your rack?

When you expose tiles from your rack?

# Answer #2

When are you committed to claiming a Discard?



**COMMITTED:**  
When you place the tile on your rack.


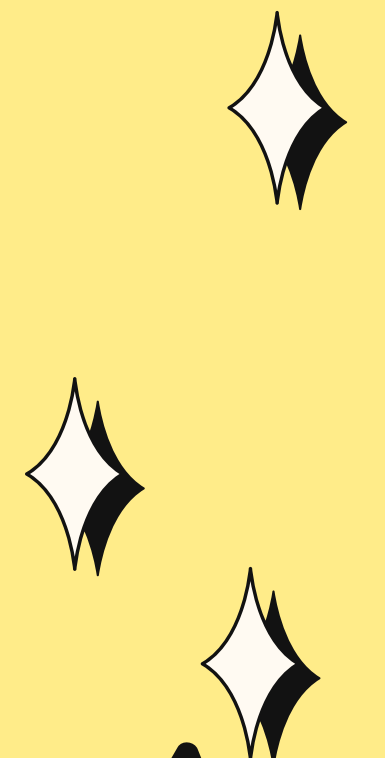
**COMMITTED:**  
When you expose tiles from your rack.

**NOT COMMITTED:**  
You can change your mind when you say Call or touch the tile (but do not place it on your rack or expose tiles from your rack!)

Facebook.com/groups/MahjongCommunity  
ModernMahjong.com



*Question 3* Which is true?



**A**

A player is committed to picking a tile from the wall if they touch it.

**B**

A player is committed to picking a tile from the wall if they moved the tile in any way. A player can change their mind if the tile has been merely touched.

**C**

A player can change their mind about picking a tile from the wall at any time before they discard a tile. They can pick it up, place it in their rack and then change their mind and put it back.



*Answer #3* Which is true?



**A**

NOT TRUE: A player is committed to picking a tile from the wall if they touch it.

**B**

TRUE: A player is committed to picking a tile from the wall if they moved the tile in any way. A player can change their mind if the tile has been merely touched.

**C**

NOT TRUE: A player can change their mind about picking a tile from the wall at any time before they discard a tile. They can pick it up, place it in their rack and then change their mind and put it back.



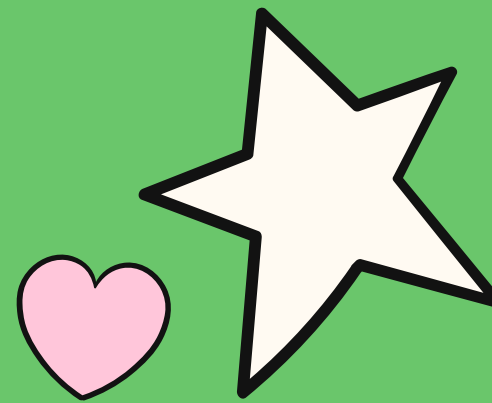


## Question 4

*Are these statements:*

**True**

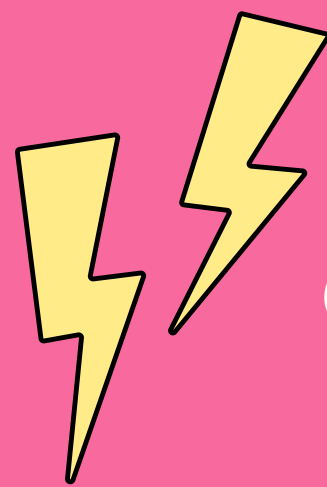
**False**



There is no requirement of a Natural Tile in a grouping of three or more identical tiles when you display your Mah Jongg.

A Pung (three identical tiles), Kong (four identical tiles) or higher can be all Jokers.

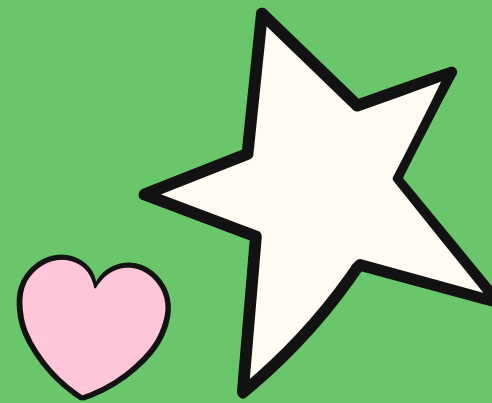




# Answer #4

*These statements are:*

**True**



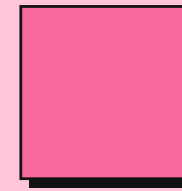
There is no requirement of a Natural Tile in a grouping of three or more identical tiles when you display your Mah Jongg.

A Pung (three identical tiles), Kong (four identical tiles) or higher can be all Jokers.

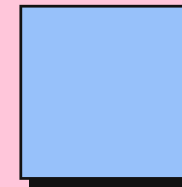
# Question 5

When does the window of opportunity to call a discard close?

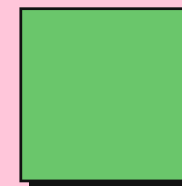
Select as many as apply.



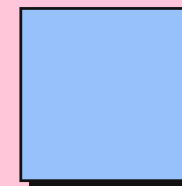
When the next tile is fully named.



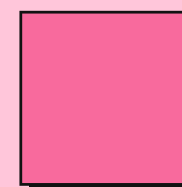
When the next tile is placed on the table.



When the player next in turn racks their tile.



When Mah Jongg is called - Congratulations!



When a Joker exchange is initiated.

# Answer #5

When does the window of opportunity to call a discard close?

Select as many as apply.

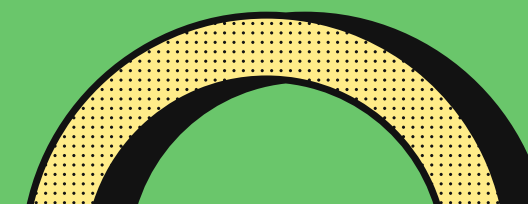
- When the next tile is fully named.
- When the next tile is placed on the table.
- When the player next in turn racks their tile.
- When Mah Jongg is called - Congratulations!
- When a Joker exchange is initiated.

*Video Clue:*



## Question 6

In this video clue (or if viewing as a PDF – if a player taps on the top of their rack) does tapping close the window to call the prior discard?





*Video Clue:*

**Tapping is not racking!**

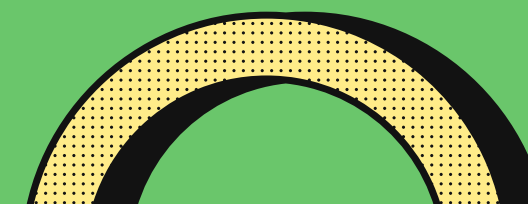


**Answer #6**

**Tapping is not Racking.  
Tapping is a habit many players  
have learned.**

**The NMJL confirmed it does not close  
the window of opportunity.**

**Racking is fully placing the tile in the  
sloping portion of the rack.**



# Question 7

Place these five actions in the proper order for a Joker exchange!

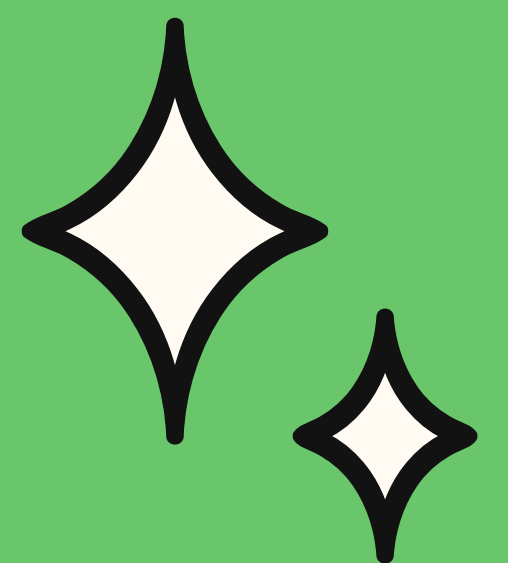
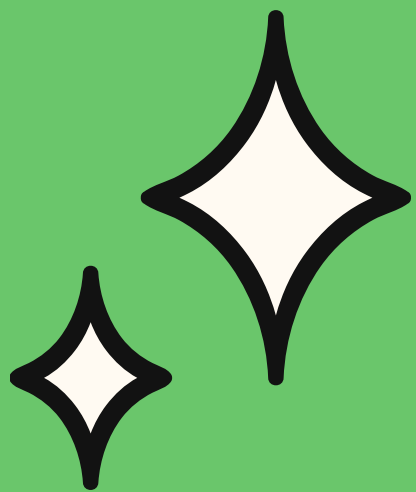
Initiate a Joker exchange

Discard

If call,  
make an  
exposure.

Pick or Call

Place the Joker  
in the sloping  
part of your rack



# Answer #7

## The proper order for a Joker Exchange

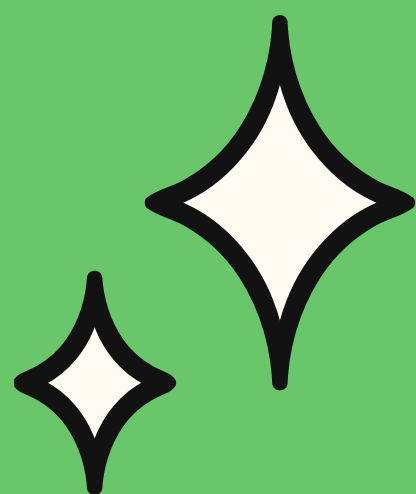
3. Initiate a Joker exchange

5. Discard

2. If call, make an exposure.

1. Pick or Call

4. Place the Joker in the sloping part of your rack





## Question 8 ✨

# True or False?

A player can call someone else's hand Dead for not being a winnable hand based on tiles in their own hand.

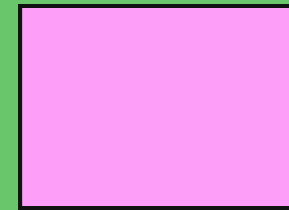
# Answer #8 ✨

**FALSE!**

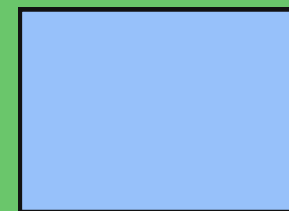
The correct statement is that a hand can only be declared Dead for not being a winnable hand based on tiles seen by everyone in exposures and discards. (This does not apply if a player's hand is Dead for other reasons like wrong number of tiles.)

## Question 9

True or False about Exchanging Jokers from a Dead Hand:



You cannot exchange any Jokers when a hand is declared Dead.



You can exchange Jokers exposed prior to the hand being declared Dead.



You can exchange Jokers from prior exposures (that would have been valid) in a Dead hand because Mah Jongg in Error for being a Concealed hand.



Jokers in an exposure that made the hand dead are not available for exchange.

# Answer #9

## True or False about Exchanging Jokers from a Dead Hand:



You cannot exchange any Jokers when a hand is declared Dead.



You can exchange Jokers exposed prior to the hand being declared Dead.

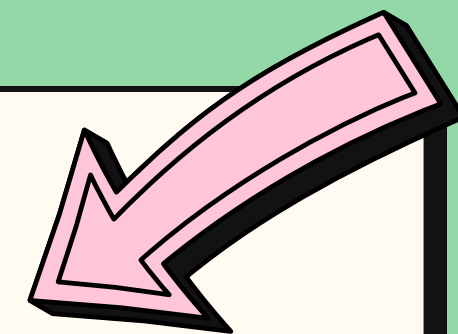
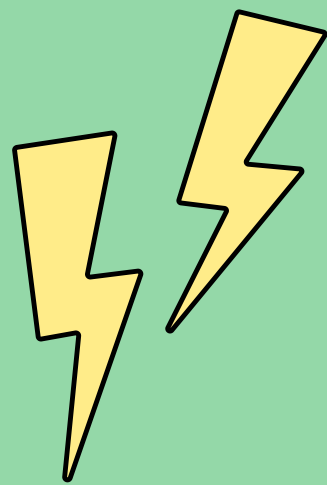


You can exchange Jokers from prior exposures (that would have been valid) in a Dead hand because Mah Jongg in Error for being a Concealed hand.



Jokers in an exposure that made the hand dead are not available for exchange.

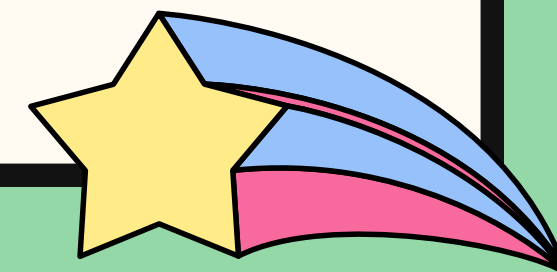
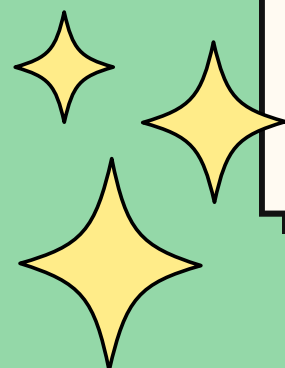
# Question 10



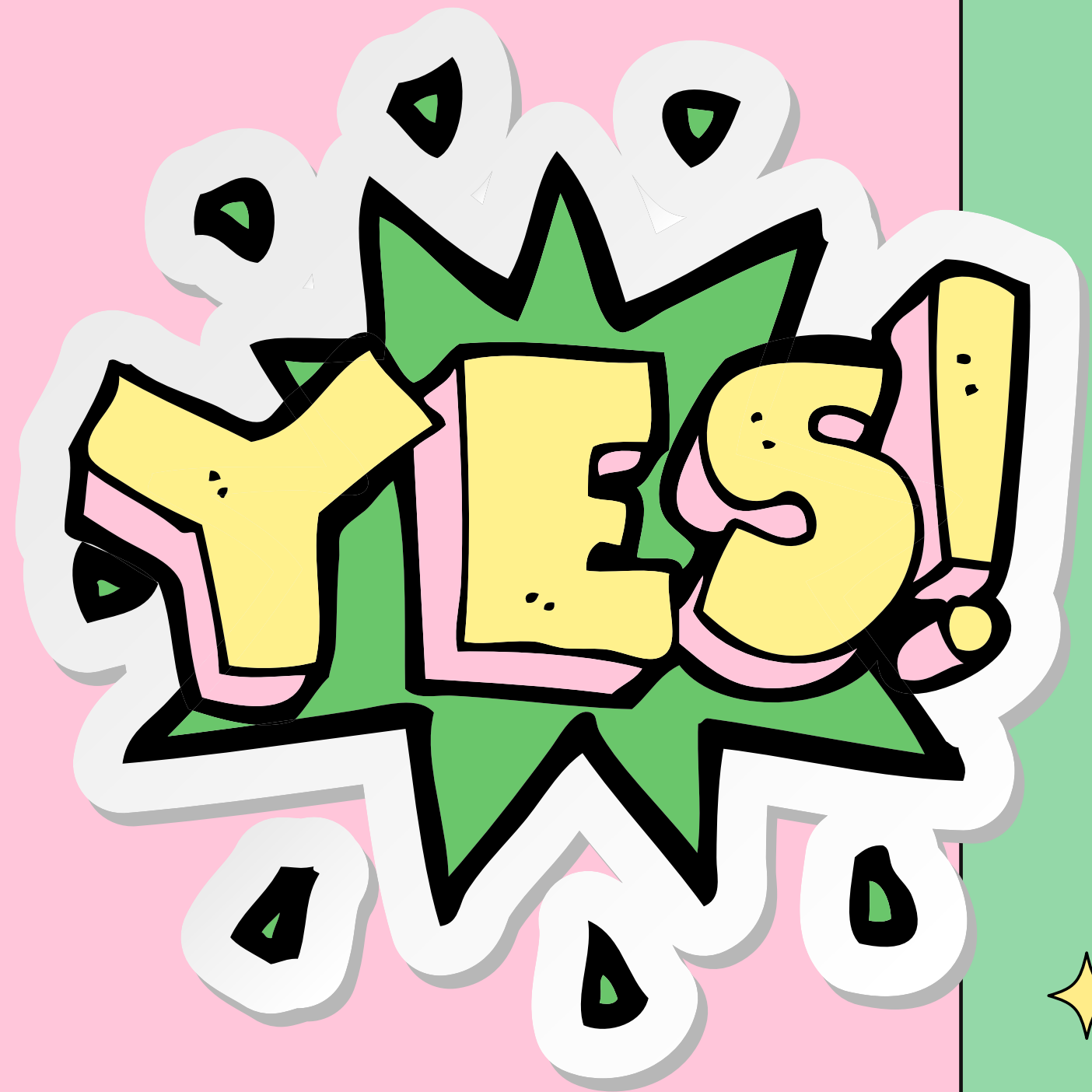
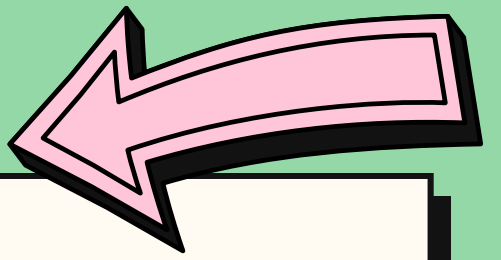
**YES**

**NO**

If a player exchanges a tile for a Joker and then declares Mah Jongg, is it self-picked?

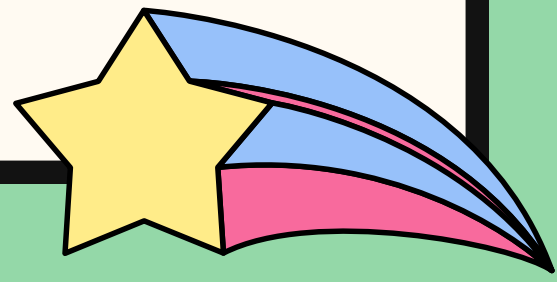
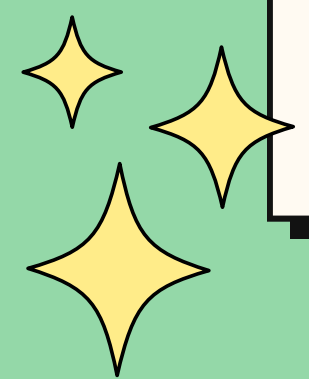


# Answer #10



If a player exchanges a tile for a Joker and then declares Mah Jongg, it is self-picked.

Facebook.com/groups/MahjongCommunity  
ModernMahjong.com



★ *Let's Stay Connected!* ★

Sign up for our informative  
Newsletter on [ModernMahjong.com](http://ModernMahjong.com)

Connect with us on Social Media!

★  [groups/MahjongCommunity](https://www.facebook.com/groups/MahjongCommunity)  
and [@ModernMahjong](https://www.facebook.com/ModernMahjong)

 [@ModernMahjong](https://www.instagram.com/ModernMahjong)

[YouTube.com/ModernMahjong](https://www.youtube.com/ModernMahjong)



*We hope you enjoyed our  
Pop Quiz - Round 2*

Stay tuned for the next Round.  
Questions will increase in difficulty of knowledge of  
rules and strategy!

If you have questions that should be  
included in Round 3, please email us at  
[ModernMahjong@gmail.com](mailto:ModernMahjong@gmail.com) !

For more rule posts, visit our  
Rules and Strategy Tab on [ModernMahjong.com](http://ModernMahjong.com).

*Thanks for playing along!*

**Subscribe to  
YouTube.com/ModernMahjong**

**We appreciate your support of  
our women-owned small business,  
ModernMahjong.com.**

**We have beautiful  
Mah Jongg gifts and accessories!**

**Facebook.com/groups/MahjongCommunity  
ModernMahjong.com**

