

Energy-Efficient Split System Heat Pumps and Air Handlers

Take Comfort.
It's an **Amana** brand.



SEER2

Amana is a registered trademark of Maytag Corporation or its related companies and is used under license. All rights reserved.

Premium **Amana**
Brand Quality

Reliability and Performance
You Can Trust





A LEGACY OF COMFORT

The impeccable reputation of an American original

Amana® brand heating and cooling systems are a part of the enduring legacy of one of America's most recognized and respected brands. Originating eight decades ago in Amana, Iowa, the brand is synonymous with long-lasting, premium quality products — from home appliances to heating and air conditioning equipment. Chances are, you and generations before you have enjoyed the dependable performance and longevity the **Amana** brand continues to deliver.

1954

Amana brand's version of the room air conditioner introduced.



1967

Brought the first consumer microwave to the market. The Radarange® microwave.



1997

Goodman Global, Inc. purchased Amana brand's heating and AC business unit.



2015

Daikin introduces its inverter technology into Amana brand premium cooling products.



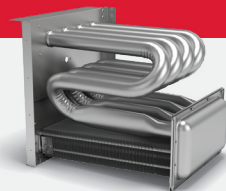
1934

Amana brand is founded by George Foerstner in Middle Amana, Iowa.



1957

First bottom-freezer refrigerator.



1986

Amana brand invents revolutionary tubular heat exchanger for gas furnaces.



2012

Daikin Industries, Ltd. acquired Goodman Global, Inc.

An American original brand continues to invest in the USA

While many other HVAC manufacturers have moved, or are planning to move production outside of the United States, Amana® brand's parent company has invested over \$400M in our state of the art production facility on the outskirts of Houston, TX. The Daikin Texas Technology Park is a sprawling campus covering more than 4 million sq. ft. with more than 4,000 personnel. The facility practices Daikin's philosophy of a full 360 degree focus to research and development, manufacturing quality and reliability, robust sales networks and extensive support infrastructure.

2018

ComfortBridge™ technology is introduced and factory-installed in select gas furnaces and air handlers



2017

Daikin Texas Technology Park commenced operations just outside of Houston, Texas.

2022

Launch of the Amana brand S-series side discharge system and Amana brand smart thermostat.



Indoor heating and cooling systems from a home-grown brand

Today, Amana brand heating and air conditioning is part of one of the leading manufacturers of energy efficient residential, commercial and industrial HVAC systems and refrigerants. The brand has access to global resources and support to ensure that the best technology, manufacturing processes, testing and product limited warranties* are applied in all products.

* Complete warranty details available from your local dealer or at www.Amana-hac.com.





RELAX. IT'S AN **AMANA**® BRAND.



The purchase of an indoor comfort system is not one to be taken lightly. However, it's one you can make with an air of confidence when you consider all that distinguishes the venerable **Amana** brand.

Comforting craftsmanship

Innovative engineering, world-class manufacturing processes and the relentless drive to ensure each unit lives up to our uncompromising standards — these attributes define

the **Amana** brand and result in the premium performance homeowners have come to expect from an American legend. **Amana** brand products are America's brand for comfort.



Trust the experts

Your local Amana® brand dealer plays a critical role in ensuring that your household's heating and air conditioning needs are met. That is why we are excited to work with an extensive network of local HVAC professionals that distinguish themselves based on their customer service, business standards and technical competency. Please ask your local Amana brand dealer about why they can provide you with outstanding service and support, as well as industry leading Amana brand products.



AMANA® BRAND HEAT PUMPS

Amana brand heat pumps distinguishing features*

- ✓ Up to 22.5 SEER2 efficiency, up to 8.5 HSPF2
- ✓ ComfortAlert™ diagnostics
- ✓ Compressor sound cover
- ✓ High-efficiency scroll compressor
- ✓ Liquid line accumulator
- ✓ Crankcase heater
- ✓ Discharge muffler
- ✓ Chlorine-free R-410A refrigerant
- ✓ Steel louver coil guard
- ✓ Select models feature Inverter compressor technology
- ✓ ComfortBridge™ or Amana brand smart thermostat compatible – (select models)
- ✓ ... and more!

* Not all features are available on all models

Providing indoor heating and cooling comfort year-round

Enjoy year-round indoor comfort with **Amana** brand heat pumps. These units provide both cooling and heating comfort from a single system. High-efficiency heat pumps can lower the cost of keeping a home completely comfortable all year compared to lower SEER2/HSPF2 units. The **Amana** brand offers a full line of heat pump systems, so you are certain to find the perfect system to fit any budget. For the greatest energy-efficiency savings, select a heat pump system with the highest SEER2 and HSPF2 ratings.





DID YOU KNOW:

A typical air-source heat pump system is a split or two-part system that uses electricity as its power source. The system contains an outdoor unit that looks similar to an air conditioner and an indoor air handler. The heat pump works

in conjunction with the air handler to distribute the warm or cool air to interior spaces. This allows a heat pump to provide year-round indoor comfort - no matter the season!

A REPUTATION THAT'S AS COMFORTING AS OUR PRODUCTS

While the energy-efficient performance and reliability of an **Amana®** brand Heat Pump will validate your purchase decision with dependable indoor comfort for years to come, it's the venerable **Amana** brand name that lets you be

confident today. From our world-class engineering, comforting craftsmanship, and many other distinguishing factors, buying **Amana** brand means you can be certain you made the right decision. Let's take a closer look...

PREMIUM SPLIT-SYSTEM FEATURES* - HEAT PUMP (ASZV9)

1 Variable-speed, inverter, compressor – Provides up to 22.5 SEER2 cooling performance for lower energy bills compared to lower SEER/SEER2, single-stage compressors.

2 Refrigeration-grade premium copper tubing and aluminum fin condenser coil configuration deliver outstanding heat transfer properties with R-410A refrigerant.

3 Heavy-gauge galvanized steel enclosure with sound-control top – With advanced fan design, it provides dependable, quiet airflow across the condensing coil.

4 High-efficiency ECM fan motor with advanced fan design moves air quickly and quietly.

5 High-density compressor sound blanket – Acoustically engineered, high-density sound control blanket helps to reduce noise levels compared to units without sound blankets for years of quiet comfort.

6 ComfortNet™ Communications System compatible – Continuously monitors system performance for customized indoor comfort.

7 Advanced diagnostics – Constantly monitor your heat pump system, reducing failures and pinpointing trouble spots for a fast fix.

8 Commercial grade quality with factory-installed refrigerant management components – Provides high reliability compared to units without these components.



* Some features vary by model.

Introducing the Amana® brand S-series system - A new way of thinking about HVAC.

The Amana® brand S-series is a slim side discharge style system that provides a premium mid-efficiency solution at an affordable price. It connects to traditional ducted equipment with ease, and the slim profile provides a solution when traditional cube style options cannot.

S-SERIES FEATURES OVERVIEW - HEAT PUMP (ASZS6)[†]

1 Variable-speed DC fan
High efficiency and low sound levels

2 Blue Fin corrosion coating
1000 Hours salt spray rated as standard.
Hydrophilic coating to help keep the coil clean

3 7mm Coil
High heat exchanger efficiency and compact casing design

4 Inverter board cooled by refrigerant circuit[†]
Reduction of condenser fan pressure drop caused by heat sink used

5 Swing compressor
High efficiency/low sound levels
(as low as 45dBA in Quiet Mode)

7 Advanced water-shedding drain pan
Engineered with multiple drain holes and channels providing effective water shedding

6 Intelligent defrost mode
The outdoor unit will enable this mode to help prevent frost/ice from building up in cold climate conditions. It will also help with longer heating operation time for additional comfort for occupants (compared to HVAC systems without this function). A selectable defrost backup heat option, when turned off, will lower power consumption during defrost



[†] Model specific, refer to product engineering manual for details.



[†] Select ASZS6 heat pump models meet the ENERGY STAR® cold climate requirements. Please refer to product engineering manuals for additional information or visit www.energystar.gov.



THE AIR HANDLER— HVAC’S UNSUNG HERO

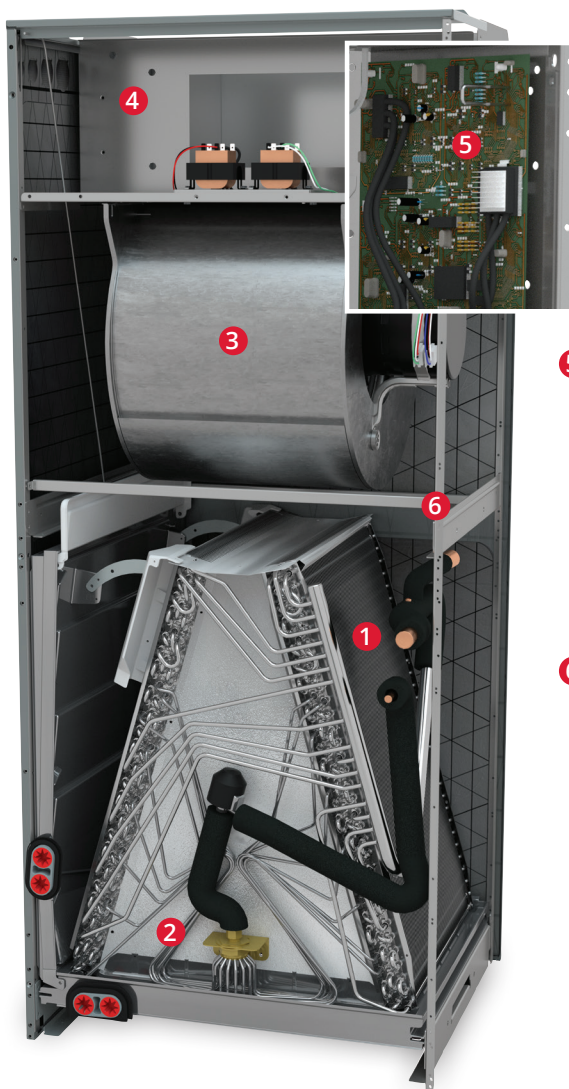
Often overlooked, an air handler is essential to your home’s heat pump comfort system, and critical to maximizing its performance and efficiency. **Amana®** brand air handlers are

engineered to deliver premium performance and built to last and last and last.

PREMIUM AIR HANDLER FEATURES*

- 1 All-aluminum coils –**
Enhanced durability in a single metal solution. Special grooved tubing provides efficient cooling and durability for long-lasting comfort.
- 2 Internal thermostatic/electronic expansion valve (TXV/EEV) –**
Simplifies installation and controls refrigerant flow for efficient cooling (Models AHVE, AMVE, AMVT)
- 3 Variable-speed electrically commutated motor (ECM) –**
Provides gradual startup and shutdown for unobtrusive operation with lower energy consumption (compared to a standard efficiency motor). Constant low-speed operation for outstanding filtration and comfort levels.

* Some features vary by model.



- 4 High-temperature thermoplastic drain pan –**
For service status indications without removing access panels. Easy component access reduces installation and service time.
- 5 Communicating compatible –**
Allows use of specially designed full color LCD display thermostats designed to ensure your system is setup to operate at its peak efficiency level.
- 6 SmartFrame™ sub-structure –**
Intelligent structural design both improves the **Amana** brand air handler’s lateral stability and affords a sturdy mounting framework for internal components. It also secures the foil-faced insulation covering the entire blower casing reducing operating noise and cabinet condensation that may occur during normal operation.

LEARN MORE AT
www.amana-hac.com



Heating & Air Conditioning
Amana
AMERICA'S BRAND FOR COMFORT

Bridging indoor comfort with smart technology



When your new air conditioner or heat pump is paired with a select **Amana**® brand gas furnace with ComfortBridge™ technology, performance data from the split system is gathered and used to make automatic adjustments that may help reduce the amount of energy used to cool your home.

Always in pursuit of innovative ideas, our engineers have designed ComfortBridge technology to help your entire HVAC system cost-effectively operate at peak performance — providing consistent energy-efficient home comfort. ComfortBridge technology works with any single-stage thermostat to help create customized indoor comfort specifically for you and your family.

Introducing the Amana brand smart thermostat*.

The new **Amana** brand smart thermostat is compatible with all **Amana** brand communicating equipment. Homeowners can control their indoor comfort with ease through the stylish capacitive touchscreen.

Homeowners will appreciate the feature-rich design and intuitive functionality. A single

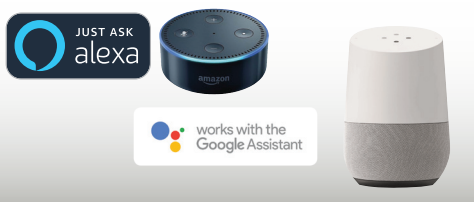
configurable auxiliary output allows control of an external humidifier, dehumidifier, or secondary heat source. The **Amana** brand smart thermostat is also compatible with the new **Amana** brand home app for end-user control from anywhere on their smart device, as well as voice control compatibility with Amazon and Google smart devices (with Wi-Fi).



* The **Amana** brand smart thermostat is a ClimateTalk protocol device and is not compatible with ComfortBridge.



Voice control



Direct control



App control



WHOLE HOME IAQ SOLUTIONS

Our complete family of Clean Comfort® products helps to improve indoor air quality.

Clean Comfort Indoor Air Essentials can help improve the quality and comfort of your home's indoor air. Components can be installed on virtually any brand of HVAC equipment in any home or installation.

LEARN MORE AT
www.cleancomfort.com



Filtration

HEPA bypass filtration cleans air to a high-quality standard removing 99.97% of all particles as small as 0.3 microns. Media air cleaners are a more efficient and convenient way to clean the air than standard filters. Both options may help to remove dust, lint, and other particulates.



Humidification

Whole-home humidifiers add moisture to the conditioned air flowing through the home. Premium steam humidifiers help maintain comfortable humidity levels utilizing electrode and canister technology. Evaporative humidifiers use the warm furnace air to circulate evaporated moisture.



Dehumidification

Whole-home dehumidifiers remove moisture from your home's air, helping to keep the indoor environment comfortable. The dehumidifier can work in conjunction with your central AC system or independently as needed, automatically maintaining suitable year-round humidity levels.



Purification

Ultraviolet (UV) light is an effective method to inhibit the growth of microbes such as mold, bacteria, and viruses. Air purifiers harness the power of UV, increasing disinfection power in the airstream. UV coil purifiers bask the coil with UV light and help to keep the evaporator coil clean.



Ventilation

Heat recovery ventilators (HRV) and energy recovery ventilators (ERV) offer a simple, energy-efficient solution for ventilating well-insulated homes. HRV and ERV products keep you comfortable and may save energy by using the stale indoor air exhaust to condition fresh incoming air.







Zoning

A zoned residential HVAC system redirects air to specific areas of the home, allowing for the creation of customized temperature zones for increased comfort. Advanced, integrated controls monitor the system static pressure to reduce air noise and assure adequate system airflow.

CLEAN COMFORT®
INDOOR AIR ESSENTIALS

PURE. CLEAN. AIR.

	Split System Heat Pumps					
MODELS	ASZV9	ASZC7	ASZS6	ASZH5	ASZH4	ASZN4
ComfortBridge™ Compatible	●	●	ComfortNet™ Only	N/A	N/A	N/A
M1 Rated	YES	YES	YES	YES	YES	YES
SEER2	Up to 22.5	Up to 17.2	Up to 17.2	Up to 15.2	14.3	14.3
HSPF2	Up to 8.2	Up to 8.2	Up to 8.6	Up to 7.8	7.5	7.5
Compressor Type	High-Efficiency Variable-Speed Swing	High-Efficiency Two-Stage Scroll	High-Efficiency Variable-Speed Swing	High Efficiency Scroll	Energy Efficient Scroll	Energy Efficient
SmartShift® Defrost Technology	Demand	Time/Temp	Intelligent	Time/Temp	Time/Temp	Time/Temp
Factory-Installed Accumulator	●	●	●	●	●	●
Crankcase Heater	YES – Internal to the compressor	●	YES – Internal to the compressor	●	●	●
Compressor Sound Blanket	High Density	High Density	High Density	High Density	High Density	Select Models
Filter Drier	Field Installed‡	Factory Installed	Field Installed‡	Factory Installed	Factory Installed	Factory Installed
ENERGY STAR Certified**	 Select combinations	 Select combinations	 Select combinations		NO	NO

‡ Supplied with filter drier loose and requires field installation by contractor.

• ComfortBridge™ compatible on furnace and MBVC match-ups ComfortNet™ compatible on AMVE Air Handler match-ups

**ENERGY STAR® and the ENERGY STAR mark are registered trademarks owned by the U.S. Environmental Protection Agency. ENERGY STAR products are third-party certified by an EPA-recognized Certification Body. Products that earn the ENERGY STAR prevent greenhouse gas emissions by meeting strict energy efficiency guidelines set by the U.S. Environmental Protection Agency. Proper sizing and installation of equipment is critical to achieve optimal performance. Split system air conditioners and heat pumps must be matched with appropriate coil components to meet ENERGY STAR criteria. Ask your contractor for details or visit www.energystar.gov.

1 Products that are recognized as the Most Efficient of ENERGY STAR® in 2023 prevent greenhouse gas emissions by meeting rigorous energy efficiency performance levels set by the U.S. Environmental Protection Agency. Select combinations are recognized as the Most Efficient of ENERGY STAR® in 2023. Visit the following website for more information: www.energystar.gov/products/most_efficient.

+ Select ASZS6 heat pump models meet the ENERGY STAR cold climate requirements. Please refer to product engineering manuals for additional information or visit www.energystar.gov.

	Air Handlers							
MODELS	AHVE MULTI-POSITION	AMVE MULTI-POSITION	AMVT MULTI-POSITION	AMST MULTI-POSITION	MBVC MODULAR BLOWER**	AWST WALL MOUNT	AWSF WALL MOUNT	ACSF CEILING MOUNT
ComfortBridge™ Compatible	ComfortNet™ Only	●	●	N/A	●	N/A	N/A	N/A
ALL-ALUMINUM Evaporator Coil	●	●	●	●	N/A	●	●	●
Factory-Mounted TXVs	Factory-mounted EEV	Factory-mounted EEV	●	●	N/A	●	N/A	N/A
R-410A Refrigerant	●	●	●	●	●	●	●	●
Tonnage	2 to 5 Ton	2 to 5 Ton	2 to 5 Ton	2 to 5 Ton	1 ½ to 5 Ton	1 ½ to 3 Ton	1 ½ to 3 Ton	1 ½ to 2 ½ Ton
Motor Type	Variable-Speed ECM	Variable-Speed ECM	Variable-Speed ECM	9 TAP ECM	Variable-Speed ECM	Multi-Speed ECM	Direct-Drive, Multi-Speed	Direct-Drive, Multi-Speed



ASURESM EXTENDED SERVICE PLAN



How Affordable is Asure?

Isn't your comfort worth only pennies a day? Asure eliminates the cost of unbudgeted system repairs. Asure's got you covered today and for years into the future, no matter how much the cost of a service call may increase during that time.

Worry-free coverage.

An Asure Extended Service Plan gives you the peace of mind that you won't be faced with unexpected repair or part replacement costs for your heating and air conditioning system. We give you comfort, knowing you and your family won't have to endure any long periods without heating or cooling – you're covered!

The Asure Extended Service Plan complements the standard product limited* warranty by providing labor coverage and additional years of parts coverage, based on the plan selected. Your Asure dealer can provide you with details on the different coverage options available.

What does the plan cover?

The Asure Extended Service Plan provides extended coverage for all functional parts of your newly-installed **Amana**[®] brand air conditioning and heating equipment. If a repair is needed, an authorized Asure dealer will respond promptly and make repairs with quality **Amana** brand specific parts.

* Complete warranty details available from your local dealer or at www.Amana-hac.com.



We have financing options.

Financing for your **Amana** brand home comfort system is available via EGIA. For more details and enrollment information, visit <https://amana.egia.org/> or call 888-691-0387.



REPAIR OR REPLACE?

With the help and support of your local **Amana**® brand dealer, you are preparing to make the decision whether it's best to repair or replace the old heating and/or cooling system. As you prepare to make this decision be certain to consider these options:

- Energy-efficient performance of a new unit can help lower utility bills
- Ideal indoor comfort levels of a new system with communicating capabilities
- Consistent indoor comfort with a new variable-speed (inverter) system
- Initial costs associated with repairing your current system
- Cost of purchasing a new heating and cooling system

Please find the Repair vs. Replace Worksheet below helpful through your decision-making process with your local **Amana**® brand dealer.

Repair vs. Replace Worksheet

CURRENT SYSTEM				
	AIR CONDITIONER	HEAT PUMP	GAS FURNACE OR AIR HANDLER	INDOOR COIL
Brand Name				
Age of Unit				
Warranty Coverage				
Efficiency Rating				
Refrigerant Type				
Type of Thermostat				
Estimated Life Expectancy				
Estimated Monthly Cost to Operate				
Annual Maintenance Cost Estimate				
NEW SYSTEM				
	AIR CONDITIONER	HEAT PUMP	GAS FURNACE OR AIR HANDLER	INDOOR COIL
Brand Name				
Age of Unit				
Warranty Coverage				
Efficiency Rating				
Refrigerant Type				
Type of Thermostat				
Estimated Life Expectancy				
Estimated Monthly Cost to Operate				
Annual Maintenance Cost Estimate				



Amana® brand products average 4.7 out of 5 stars in homeowner satisfaction with thousands of reviews captured on Amana brand Heating and Air Conditioning products.

Don't just take our word for it...

See the reviews on
www.amana-hac.com/reviews.

AMANA® BRAND IS SOCIAL!

 Like us on **Facebook!**
facebook.com/AmanaHVAC

 Follow us on **Twitter!**
twitter.com/Amana_HVAC

 Follow us on **Instagram!**
instagram.com/Amana_HVAC

www.amana-hac.com

Additional information

Before purchasing this appliance, read important information about its estimated annual energy consumption, yearly operating cost, or energy efficiency rating that is available from your retailer.



A DAIKIN BRAND

Our continuing commitment to quality products may mean a change in specifications without notice.

© 2023 **DAIKIN COMFORT TECHNOLOGIES NORTH AMERICA, INC.** · Houston, Texas · USA · www.amana-hac.com

Amana® is a registered trademark of Maytag Corporation or its related companies and is used under license. All rights reserved.

CB-A_HPAHU_08-23