

OSSEO ELECTRIC FIREPLACE

29 INSERT / BUILT-IN | 34 INSERT / BUILT-IN | 45 LINEAR | 60 LINEAR

Osseo 60 Linear with a Blue flame, River Rock, Driftwood logs, White ember bed with a Rectangle 4-piece surround



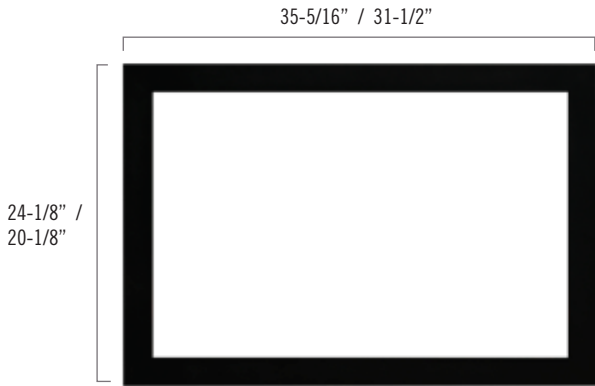
QUALITY FIREPLACES FOR LIFE.

KOZY  **HEAT**
FIREPLACES

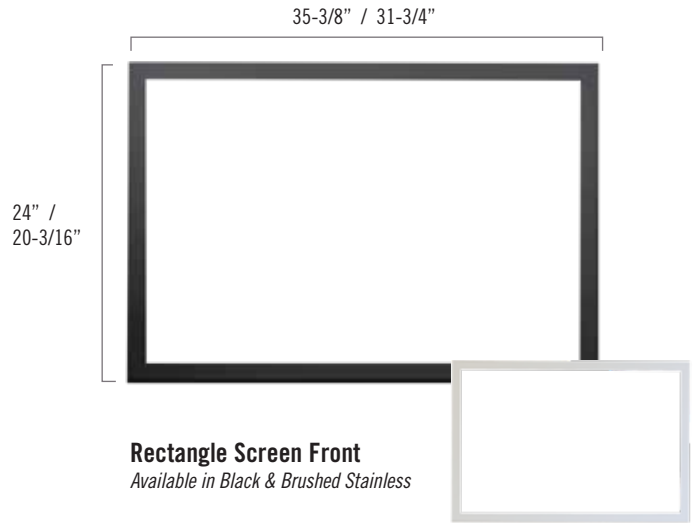
OSSEO SERIES

Screen Fronts

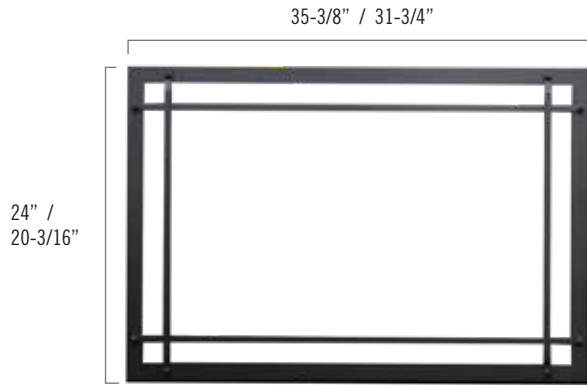
Osseo 29 & 34 Insert/Built-Ins are capable of using Chaska Series Shrouds and Fronts



Standard Rectangle Front
Included with the Osseo 29 & 34



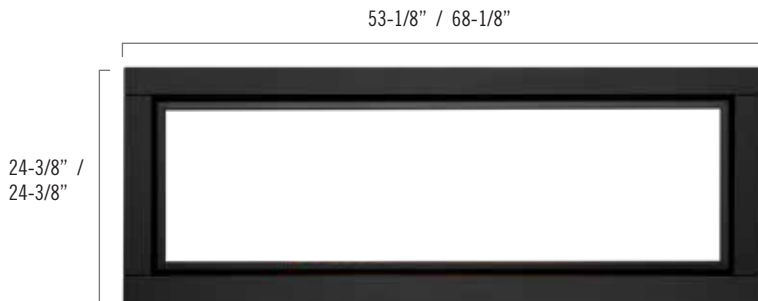
Rectangle Screen Front
Available in Black & Brushed Stainless



Prairie Screen Front
Screen Front available in Black



Arched Mission Screen Front
Available in Vintage Bronze



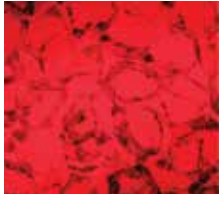
Rectangle 4-piece surround
Available in Black for the Osseo 45 & 60



Rectangle Screen Front
Available in Brushed Nickel Overlay
& Antique Copper Overlay

OSSEO SERIES

Ember Bed Colors



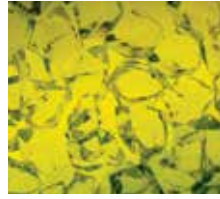
Red



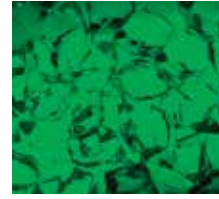
Ember



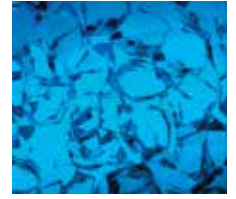
Orange



Yellow



Green



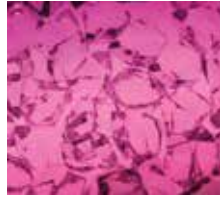
Sea Breeze



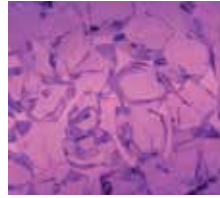
Blue



Purple



Pink



Magenta



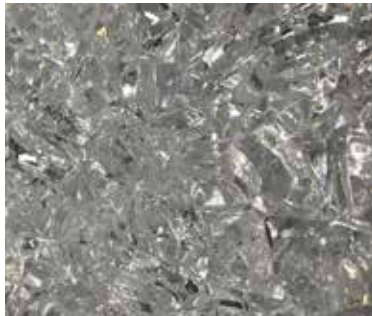
White



Multi-Color Changing

Variations in the color and tone are common in the printing process, therefore actual colors may vary slightly from those shown.

Media Options



Small Crystals



Large Crystal



River Rock



Driftwood



Traditional Logs



Lava Rock

OSSEO SERIES 29 / 34 INSERTS

All the the Osseo fireplaces can come in any color combination and any media combination listed. They all come with a standard rectangle front.

Variations in the color and tone are common in the printing process, therefore actual colors may vary slightly from those shown.



Osseo 29 with an Orange flame and a White Ember bed and a Standard Rectangle Front



Osseo 29 with an Orange flame, Pink ember bed and an Antique Copper rectangle screen front.



Osseo 29 with an Orange flame, Red ember bed, River Rocks and Traditional logs with a Standard Rectangle Front



Osseo 34 with an Orange & Blue flame, Orange ember bed, River Rocks, Traditional logs and a Mission screen front in Vintage Bronze



Osseo 34 with an Orange flame, Ember colored ember bed, Driftwood logs and a Rectangle screen front in brushed Nickel overlay



Osseo 34 with a Blue flame, White ember bed, Driftwood logs and a Standard Rectangle Front

OSSEO SERIES 45 / 60

All the Osseo fireplaces can come in any color combination and any media combination listed. Here are some options.

Variations in the color and tone are common in the printing process, therefore actual colors may vary slightly from those shown.



Osseo 60 with a Blue flame, and Sea Breeze ember bed



Osseo 60 with an Orange & Blue flame, Magenta ember bed and large Crystals



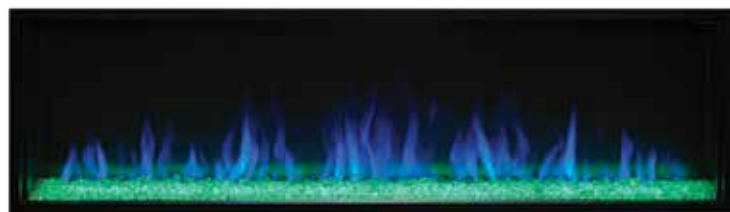
Osseo 60 with an Orange & Blue flame, White ember bed and Driftwood logs



Osseo 45 with an Orange Flame, Sea Breeze ember bed and Traditional Logs



Osseo 45 with an Orange and Blue flame, Purple ember bed, Traditional logs, and optional Rectangle 4-piece surround



Osseo 60 with a Blue flame and Green ember bed

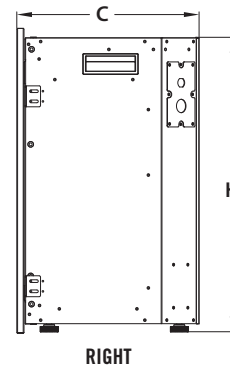
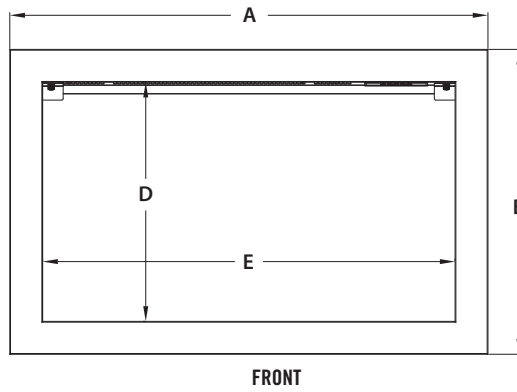
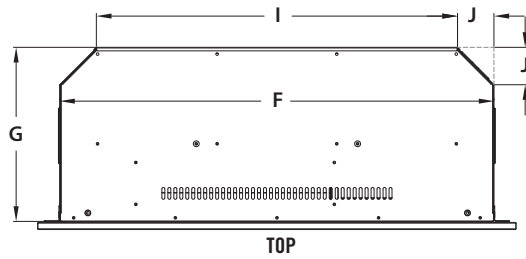
Osseo 34 with Orange flame, Orange Ember bed, River Rock, Traditional Logs with a Prairie screen front



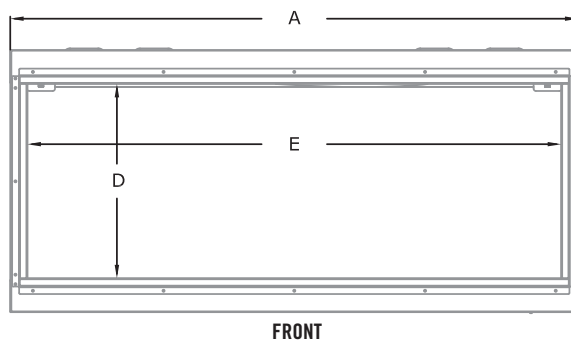
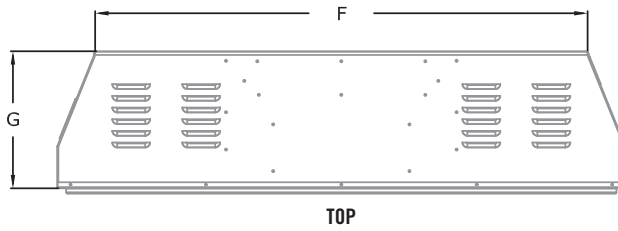
OSSEO SERIES

Application Dimensions

Model	A	B	C	D	E	F	G	H	I	J
OSO-29	31-1/2"	20-1/8"	12"	15"	27-11/16"	28-3/4"	11-1/2"	19-7/16"	24"	2-3/8"
OSO-34	35-5/16"	24-1/8"	12"	19-1/4"	31-1/2"	32-9/16"	11-1/2"	23-1/2"	26-3/4"	2-3/8"



Model	A	B	C	D	E	F	G
OSO-45	47-7/8"	22-1/4"	12"	16-3/8"	45"	41-1/2"	11-1/2"
OSO-60	62-7/8"	22-1/4"	12"	16-3/8"	60"	56-1/2"	11-1/2"



OSSEO SERIES

Specifications

Model	Osseo 29 Insert	Osseo 34 Insert	Osseo 45 Linear	Osseo 60 Linear
Height	19-7/16"	23-1/2"	22-1/4"	22-1/4"
Width	28-3/4"	32-9/16"	47-7/8"	62-7/8"
Back Width	24"	26-3/4"	41-1/2"	56-1/2"
Depth	11-1/2"	11-1/2"	11-1/2"	11-1/2"
Weight	64 lbs.	76 lbs.	109 lbs.	137 lbs.
Viewing Area	15" x 27-11/16"	19-1/4" x 31-1/2"	16-3/8" x 45"	16-3/8" x 60"
BTU	5,000	5,000	5,000	5,000
Heater	Two Stage (Hi/Lo) with Blower			
Electrical	Plug in or hardwired 120V with Energy Saving LED light kits			
Timer	Minimum: 30 Mins Maximum: 8 Hours			
Rear Flame Options	Orange, Blue, Orange/Blue Mixed			
Ember Bed Light Options	Red, Ember, Orange, Yellow, Green, Sea Breeze, Blue, Purple, Pink, Magenta, White, Multi-Color Changing			
Included Media	Small Crystals, Large Crystals, River Rock			
Optional Media	Driftwood, Traditional Logs, Lava Rock			
Remote	Included			
Standard Rectangle Front	Overlay Front Included	Overlay Front Included	Overlay Front Included	Overlay Front Included
Optional Rectangle Front	Chaska 29 Fronts	Chaska 34 Fronts	Rectangle 4-piece Surround	Rectangle 4-piece Surround

Features, Options & Specifications are subject to change.

Refer to the install manuals for complete installation requirements.

Clearances

Model	Osseo 29/34	Osseo 45/60
Bottom of Appliance	0"	0"
Left and Right Sides of Appliance	0"	0"
Back of Appliance	1/2"	1/2"
Front of Appliance	36"	36"
Top of Viewing Opening to 2" Mantel	2-3/4"	2-7/8"
Top of Viewing Opening to ceiling	7-3/4"	7-7/8"
Top of Appliance to Enclosure	1/2"	1/2"

Burn Videos



Osseo 60



Osseo 34

Shroud Dimensions – Insert Application

Osseo 29

25"x38", 27 1/2"x42", 30"x44" (Chaska Shrouds) or 27"x40" (Includes a 4" bottom riser)

Osseo 34

27"x40", 30"x44", 33"x46" (Chaska Shrouds) or 32"x44" (Includes a 4" bottom riser)

*Custom sizes available where applicable

Rectangle Surround Dimensions

Osseo 45

24 3/8" x 53 1/8"

Osseo 60

24 3/8" x 68 1/8"

In order to continually provide the highest quality product available, features/options, specifications, & dimensions are subject to change. Flame appearance and characteristics may be affected by altitude, fuel type, venting configuration, and other factors. Refer to the unit installation manual for complete installation instructions. Installation must conform with local building codes. **In some regions it may be possible that this appliance qualifies for an energy rebate. See your local dealer for details regarding promotions and qualifications.**

Hussong Mfg. Co., Inc.
204 Industrial Park Road, Lakefield, MN 56150
Phone 1-800-253-4904 www.kozyheat.com 4-22



Product Line:



For complete information on the Kozy Heat product line, please contact us at:

FOR CALIFORNIA RESIDENTS ONLY

⚠ California Proposition 65 Warning

WARNING: Cancer and Reproductive Harm - www.P65Warnings.ca.gov.