



— & —
COSMO

DIRECT VENT GAS FIREPLACES

— **HEAT & GLO** —

COSMO

Clean lines and elegant ambiance never go out of style. Make the look your own with two sizes and several front and interior finishing options. Choose from traditional or driftwood logs. Set the mood with LED accent lighting and a long ribbon of flame. Operate your fireplace from an intuitive and safe control. Add heat management and direct the heat where you want it. Place your TV above with the optional SmartWall™ TV kit.



COSMO 42 with Martini front in black, fade-resistant black glass reflective panels, clear glass firebed and LED accent lights

FRONT OPTIONS



MARTINI FRONT

GRAPHITE	NEW BRONZE
FOG GRAY	EBONY (GLOSS FINISH) ¹



CLEAN FACE TRIM

BLACK	NEW BRONZE
FOG GRAY	GRAPHITE
EBONY (GLOSS FINISH) ¹	STAINLESS STEEL ¹

INTERIOR OPTIONS



FADE-RESISTANT REFLECTIVE BLACK GLASS INTERIOR PANELS



DRIFTWOOD LOGS



TRADITIONAL LOGS



LED ACCENT LIGHTING²



CRYSTAL GLASS



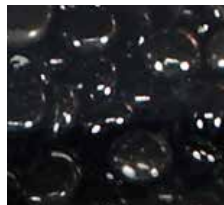
BLACK GLASS



AMBER GLASS



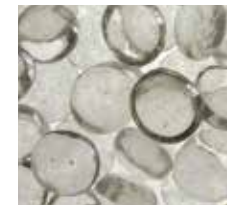
BLUE GLASS



BLACK GLASS BEADS



WHITE GLASS BEADS



CLEAR GLASS BEADS



RIVER ROCK

CONTROLS

INTELLIFIRE™ TOUCH RC400 TOUCHSCREEN REMOTE CONTROL

Features: on/off, flame height adjustment, fan speed, lights adjustment, thermostat mode, room temperature readout, child lock, timer mode, battery backup, cold climate mode, power vent, wall docking station (fan, lights and power vent are dependent on your fireplace).



INTELLIFIRE TOUCH RC150 WIRELESS WALL SWITCH

Features: on/off, battery strength indicator, battery backup, cold climate mode



¹ Available for 42" only. ² White comes standard; available colors (green, red, dark blue, yellow, purple, light blue) must be set at installation.

TECHNOLOGY

INTELLIFIRE TOUCH IGNITION SYSTEM



IntelliFire Touch is the most advanced and intuitive IntelliFire system, making operating your fireplace simple, smart and safe.

Select the wireless wall switch or touchscreen remote control for the solution that fits your life.

DIRECT VENT TECHNOLOGY



Direct Vent fireplaces remove 100% of combustion exhaust and odors outside of the home. These sealed fireplaces provide optimal heat, conserve energy and ensure clean, safe indoor air quality.

HEAT MANAGEMENT



Solutions to help you manage the heat throughout your house.

SMARTWALL TV KIT Design flexibility with automatic fan that allows a TV to be mounted 12" above the fireplace without a mantel or shelf.²

HEAT-ZONE® KIT Reduce wall temperatures and redirect up to 50% of the heat from your fireplace to another room in your home.

HEAT DUCT KIT Send the warmth from your fireplace to the rest of your home via the furnace ductwork.

HEAT OUT KIT Redirect up to 40% of the heat from your fireplace and direct it outside for comfort year round.

OPTIONAL FAN Move heat directly into the room for added comfort.

² The SmartWall fan will and must run continuously to move the heat away from the area above the fireplace. Also minimum guidelines must be followed:

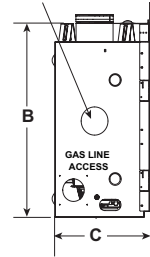
- Minimum of 3" gap between the TV and wall at all angles
- Minimum of 24" to side wall
- Ambient room temperature 75° F or less
- See TV manufacturer's recommendation for TV operating temperatures
- Minimum 60" from the top of the fireplace opening to the ceiling

SPECIFICATIONS

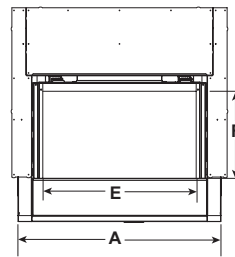
MODEL	FRONT WIDTH (A)		HEIGHT (B)		DEPTH (C)		REAR WIDTH (D)		GLASS SIZE (E X F)	BTU/HR INPUT
	ACTUAL	FRAMING	ACTUAL	FRAMING	ACTUAL	FRAMING	ACTUAL	FRAMING		
COSMO 32"	36" [914]	37" [940]	38-1/16" [967]	36-1/2" [927]	17-3/4" [451]	17-3/4" [451]	25-3/4" [654]	37" [940]	27-1/4" x 15-1/4" [692 mm x 387]	19,000 [NG] 16,500 [LP]
COSMO 42"	48" [1219]	49" [1245]	33-11/16" [856]	32-3/4" [832]	17-3/4" [451]	17-3/4" [451]	37-3/4" [959]	49" [1016]	39" x 15-1/4" [991 mm x 387]	25,250 [NG] 23,500 [LP]

PRODUCT DIMENSIONS

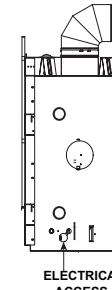
HEAT MANAGEMENT ACCESS



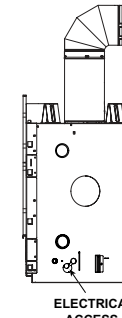
LEFT VIEW



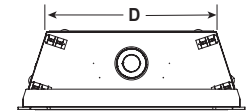
FRONT VIEW



32" RIGHT VIEW



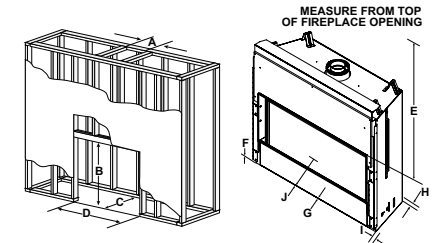
42" RIGHT VIEW



TOP VIEW

FRAMING DIMENSIONS

MODEL	A	B	C	D	E	F	G	H	I	J
COSMO 32"	8-5/8" [219]	36-1/2" [927]	17-3/4" [451]	37" [940]	31" [787]	0" [0]	0" [0]	1/2" [13]	1/2" [13]	36" [914]
COSMO 42"	8-5/8" [219]	32-3/4" [832]	17-3/4" [451]	49" [1245]	31" [787]	0" [0]	0" [0]	1/2" [13]	1/2" [13]	36" [914]



Dimensions are in inches and millimeters. Product information is not complete and is subject to change without notice. Product installation must adhere strictly to instructions shipped with product. We recommend measuring individual units at installation. NOTE: Combustible material should not cover the face. REFER TO INSTALLATION MANUAL FOR DETAILED SPECIFICATIONS ON INSTALLING THIS PRODUCT. Hearth & Home Technologies reserves the right to update units periodically. Actual product appearance, including flame, may differ from product images.

EFFICIENCIES

EnerGuide (CSA P.4.1-15) EnerGuide is a rating used in Canada to measure annual fireplace efficiency.

COSMO 42	COSMO 32
63.8% (NG)	51.1% (NG)

For complete information on this model, please contact us at:

HEAT & GLO

No one builds a better fire

Web: heatnglo.com
Phone: (888) 427-3973
E-mail: info@heatnglo.com

- [facebook.com/HeatandGlo](https://www.facebook.com/HeatandGlo)
- twitter.com/HeatandGlo
- [youtube.com/HeatandGlo](https://www.youtube.com/HeatandGlo)

HNG-1092U-1117

LIMITED LIFETIME WARRANTY³

The strongest in the industry, Heat & Glo provides a limited lifetime warranty on the most important aspects: firebox and heat exchanger.

³ For full warranty details see heatnglo.com. Fireplace glass and other surfaces get extremely HOT and can cause severe burns if touched. Do not remove the protective safety screen from the front of the glass. Keep a safe distance away. To learn more visit www.heatnglo.com/fireplace-safety

