

BLUONICS

THE PURE WATER EFFECT



ULTRAVIOLET 4 STAGE UNDER SINK WATER FILTER

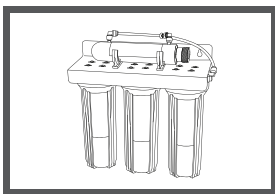
INSTALLATION MANUAL

www.bluonics.com

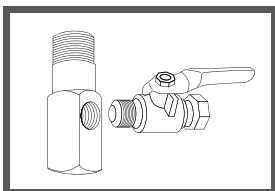
Table of Content

■ What is included?	3
■ Know your water filtration system	4
■ Before you start the installation	5
■ We made it easy for you, with quick connect fitting	6
■ Tubing connection	6
■ Installation steps	7
■ Step 1: filter assembly	8
■ Step 2: installing the system	9
■ Step 3: install ultraviolet sterilizer	14
■ System maintenance	16
■ Safty instruction	18

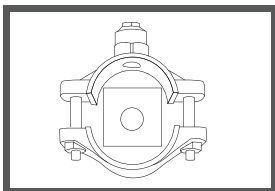
WHAT IS INCLUDED?



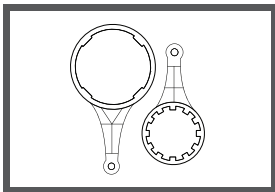
Bluonics 4 Stage Drinking Water Filter with UV: This purifier system is good to treat harmful Bacteria, E.Coli, Viruses Fungi, Algae & Microbes. Environmentally Friendly. No chlorine. Does not change acidic or alkaline water lev



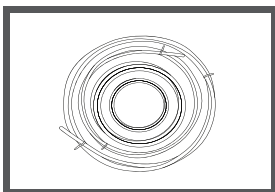
Feed Water Diverter Valve. This diverter piece also has a handy shut-off value .It is used to connect the feed water line to your exiting cold water line.



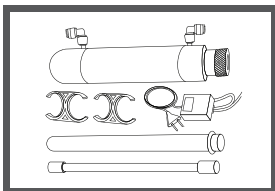
DRAIN SADDLE. This connects the reverse osmosis system's drain tube to the sinks drain pipe. The clamp style body will fit drain pipes up to 1-1/2 "diameter and should be installed between the sink basin and the trap.



HOUSING WRENCH. Only for use in loosening filter housing, never to tighten, over tightening may cause damage to the o- rings and make re-opening very difficult, Hand tighten only. Includes filter and membrane housing wrenches.



COLOR CODED TUBING. Polyethylene tubing is non-toxic, as well as highly resistive to stress and cracking. The color- coded tubing allows you to easily install your new system with our quick fit fittings.



ULTRA VOLET LIGHT. Kills harmful Bacteria, E Coli, viruses fungi, algae most microorganisms including cryptosporidium and giardia, and many other contaminants.

KNOW YOUR WATER FILTRATION SYSTEM

- This purifier system is good to treat harmful Bacteria, E.Coli, Viruses Fungi, Algae & Microbes. Environmentally Friendly. No chlorine. Does not change acidic or alkaline water levels, no impact on pH.
- The 3 stage filters remove Chlorine, Pesticides, Herbicides, Insecticides, Trihalomethanes, Benzene and many volatile organic compounds. Also Sediment, Bad Taste and Odors.
- Effectively eliminates many impurities from tap water to offer sparkling clean and great tasting water.
- Great for using in Homes, Offices, Commercial, RV, Boat and mobile homes.
- Voltage and Frequency: 110v/220V 50Hz/60Hz
- Wattage: 23W-36W
- Inlet TDS: ≤ 500 ppm
- Chlorine Level: ≤ 0.2 ppm
- Inlet Water Temperature (Min/Max): 40-113 F

BEFORE YOU START THE INSTALLATION

- Read through all instruction before beginning installation and using the system.
- Ensure source water pressure is between 40-60psi.
- Do not disassemble, open or modify this unit. Tampering with the unit may cause failure or damage and will void warranty.
- Do not cover the unit, as this will prevent proper heat dissipation and can cause damage or fire.
- Do not install on hot water source.
- Do not place objects on top of the unit as this may cause damage to the unit and may cause leaking.
- Follow all recommended operations pressure and temperature.
- Avoid contact with corrosive material.
- Keep away from heat.

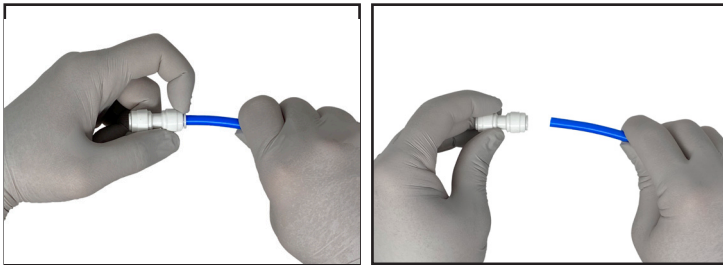
WE MADE IT EASY FOR YOU, WITH QUICK CONNECT

FITTING

The Quick Connect Fittings come with an end plug that needs to be removed before the tubing can be connected. Please disconnect the end plugs from the Quick Connect Fittings before connecting tubing.

TUBING CONNECTION

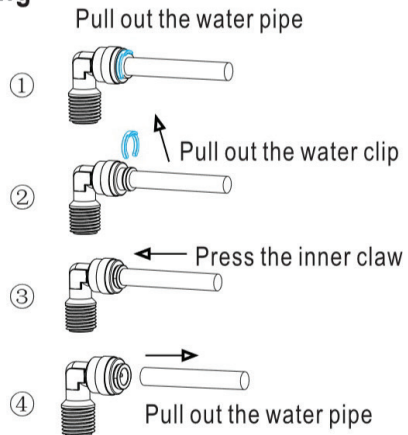
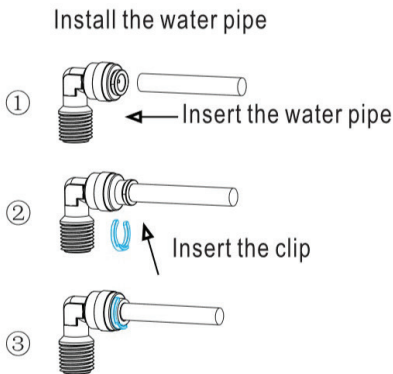
Refer to the following diagram for how to properly install the quick fitting



⦿ Tubing Connection

Refer to the following diagram for how to properly install the Quick fittings and JACO fittings.

Quick Fitting



INSTALLATION STEPS

There are 3 steps in installing the system.

Step 1

Assemble the filters and housings onto the main system

Step 2

Installing the system

Step 3

UV quartz sleeve and bulb installation



STEP 1

FILTER ASSEMBLY

Remove plastic/paper wrappings on the 3 filters, put them into the 3 housings, and assemble the housings onto the main system as follow:

Stand the 3 housings upright. Make sure each housing has a rubber O-ring in its groove.

- Put the Sediment filter into the 1st stage” housing on the left.
- Put the GAC Carbon filter into the 2nd stage” housing in the middle.
- Put the Carbon Block filter into the 3rd stage” housing on the right.

Starting from the 3rd stage housing on the right, hand twist the housing onto the main system turning counterclockwise, one by one, for all 3 housings.

Use the wrench provided to completely tighten the housing starting from 1st stage. Repeat this step for the 2nd stage housing in the middle, and for the 3rd stage housing on right to snug closed. Over tightening will deform the O-ring and cause a leak. Lubricating the o-ring with a compatible lubricant will add to its life.

Note:

For some people it is easier to use the wrench with the system laid down (face up).

STEP 2

STEP 2: INSTALLING THE SYSTEM

SPACE

Make sure there is sufficient space under the counter for installation (an area of about 15"L x 6"W x 15"H for the system).

The system is best installed under the kitchen sink. But if that is not feasible you can install the system anywhere where there is a cold water supply with sufficient water pressure.

MOUNTING

No need to mount the system on the wall. The system can stand in the sink cabinet without mounting, this makes future filter change easy and convenient. If you prefer to mount the system to the wall, please make sure it can be taken down easily for filter replacement.

FEED WATER CONNECTOR

The system must be connected to the COLD water supply only! Locate the Cold water supply valve under the kitchen sink (the round or oblong handle on the right side). Turn off the incoming cold water completely by turning the shut off handle clockwise.

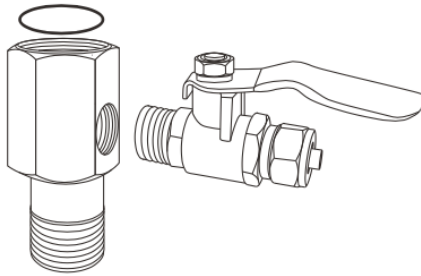
Note:

If the cold water shut off valve cannot turn off the water, the main water supply to the house must be shut off for the installation. Another option is to use a "self piercing saddle valve" from a local hardware store.

STEP 2-1: FEED WATER ADAPTOR

- Select the right size metal T fitting for your pipes (1/2" OR 3/8")
- Install Tee fitting and feed water valve as per diagram.
- Wrap threads of feed water valve and Tee fitting with teflon tape
- Connect white feed water tubing from unit to feed water valve
- Install the feed water valve and tee fitting and then connect to source water.

Caution: The water supply to your unit **MUST** be from **COLD WATER LINE**.



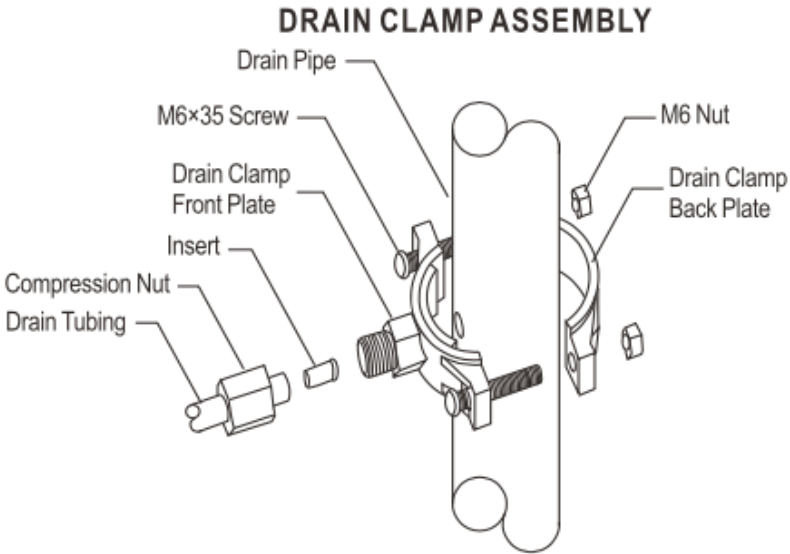
If you have a different size plumbing other than the valve supplied you need to get the correct size to fit your plumbing at your local hardware store.

STEP 2-2: DRAIN CLAMP INSTALLATION

- Position drain clamp on drain pipe above the drain trap and tighten securely
- Using the drain clamp as a guide, drill a 6mm hole, enough for the 1/4" tubing to pass through one side of the drain pipe. **DO NOT** drill through both sides
- Connect Red Waste Tubing from unit to drain clamp

Note:

When cutting the tubing, make clean, square cuts, failing to do so result in poor connection and possible leaks.

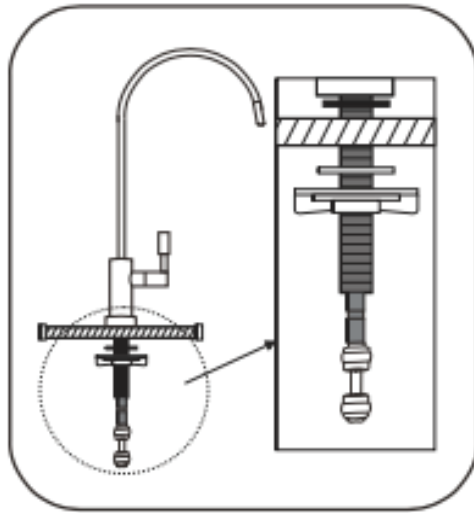


Caution:

The lowest point of the line should be the point of connection to the drain clamp. There should be no sag in the line as this may cause excessive noise.

STEP 2-3: FAUCET INSTALLATION

- Select a convenient location near your sink to place the faucet
- Drill a 1/2" diameter hole in the countertop
- Place washers, plates, seals and nuts in order as per diagram and tighten on the counter.
- Connect the tubing to the base of the faucet and to the outlet of the UV camber fitting (Quick Connect Fitting).



FAUCET LOCATION:

Make sure the faucet stud will be accessible from below when the hole is drilled. If space is not available on the upper sink area, the faucet can be located on the counter top by the edge of the sink. If the counter top is ceramic tile, the method for drilling the hole will be the same as for porcelain sinks.

Note:

For best results use a 1/2" carbide-tipped masonry drill bit. Wear safety glasses to protect your eyes while drilling the faucet hole.

No need to drill a hole if an existing hole is available or if there is a spare hole in the sink covered by a chrome cover, simply remove the chrome cover and install the faucet there.

HANGING FAUCET:

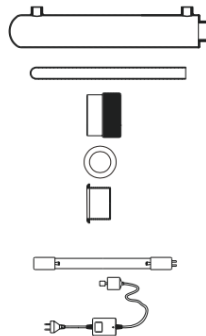
If drilling a hole is not feasible (i.e. rental home, drill tool not available etc.), the faucet can just hang on the cabinet door or wherever that is convenient.

Be creative! When drilling a hole for the faucet, choose a location that looks good, works well, and is most convenient for dispensing pure water. An ample flat area is required for the faucet base so that the faucet can be drawn down tightly.

STEP 3

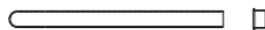
STEP 3: INSTALL ULTRAVIOLET STERILIZER

- A UV Chamber
- B Glass Tube
- C Aluminum Nut
- D Silicon O-ring
- E Silicone Stopper/Gasket
- F UV Lamp
- G Adaptor



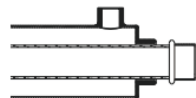
STEP 1

Place the Silicon Stopper OR Silicon Oring (Item D or E) at the tip of Glass Tube (B) until the end of the seal reach the end of the glass tube



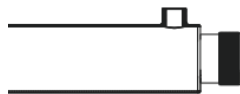
STEP 2

Slide in the Glass tube (B) into the UV Chamber (A)



STEP 3

Fasten the Aluminum Nut (C) to the seal at the UV Chamber (A)



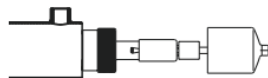
STEP 4

Plug the Adaptor (G) to the UV Lamp (F)



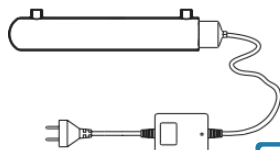
STEP 5

Insert the UV Lamp (F) into the UV Chamber (A)



STEP 6

Seal it up with the Rubber Stopper that is already attached the Adaptor (G)





Use Gasket OR O-ring over the open end of the tube then push it to the silver cap

Note:

Push the knurled nut or the O-ring OVER the gasket and glass tube end. Over-tightening the nut will deform the gasket and leak.

Once system has been set-up and has been plugged into power source, it will operate and begin treating water when the faucet is open. When the faucet is closed, the unit will switch off automatically.

SYSTEM MAINTENANCE

NEW You can **Subscribe & Save** to receive your filter replacements based on the recommendation frequency.

Visit www.bluonics.com and search for :

- Stage 1, 2 & 3 Replacements (6 to 9 month): FC-RO-PP-CTO-CAG
- UV Bulb Replacement (12 months): JY-W03F-8Q4L

Or just simply scan this QR code with your camera



To ensure the unit operates at its optimum level, routine maintenance is required. The frequency of maintenance depends on the feed water quality.

The following are some guidelines for scheduled filter changes, keep in mind that the frequency of filter changes may vary.

- Change the first 3 stages, PP Sediment Filter, Carbon Block Filter and Granular Carbon Filter every 6-9 months or as required.
- Change the UV Bulb, every year or 9000 hours

If you will be away or not using the unit for an extended period of time, please disconnect unit from power supply. If the unit has been shut

down and not used for an extended period of time, perform the same flushing procedure as in the initial set-up.

FILTER REPLACEMENT STEPS

Step 1 >> Close Feed Water Valve

Step 2 >> Open Faucet and drain any remaining water from system.

Step 3 >> Replace filters, reconnect, and open valves.

Step 4 >> Perform pre-filter flush after filters have been changed.

SAFTY INSTRUCTION

This appliance is intended to operate and function as per the instructions in this manual. It is not designed to operate outside of the specifications listed and any attempt to do so or tampering with the unit can cause damage to the unit and/or bodily harm. This unit is not a toy, keep out of reach from small children. If the unit requires service or repair, please contact your local service technician or sales representative.

- Please ensure feed water temperature is over 40°F. Using water below 40°F can cause ice to form and damage the unit.
- Please ensure power source is correct before connecting unit. Incorrect voltage could result in damage to unit and/or fire hazard.
- Do not cause damage to or use unit if the power cord is damaged.

A damaged power cord could cause an electrical shock or fire hazard. If power cord is damaged, unplug and discontinue use immediately.

CAUTION: To reduce possible hydrostatic damage and leaks, after installation but before turning on your water supply, open the filter's faucet to allow air to escape as the filter canisters fill.

It can take almost 2 minutes before you get water flow from the faucet. Run the filtered water for at least 5 minutes to remove loose carbon dust and air bubbles that will make the filtered water appear cloudy.

BLUONICS

THE PURE WATER EFFECT



**Scan this QR code with your phone
camera for your filter replacement**

**www.bluonics.com
888-207-8939**