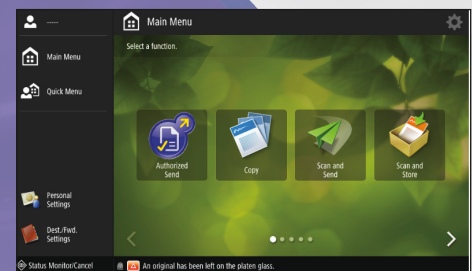




AUTHORIZED SEND Version 7



- Serverless
- Streamlined
- Secure



AUTHORIZED SEND v7—A NEW PLATFORM

Authorized Send v7 was created to meet your ever-changing business needs. This new platform is more user-friendly, more customizable, and was built from the ground up with the ability to add features and functionality to grow as your needs evolve and change.

POWERFUL, INTEGRATED, SERVERLESS DOCUMENT DISTRIBUTION

Thousands of offices, businesses, and government organizations rely on Canon imageRUNNER ADVANCE systems for copying, printing, scanning, and faxing. These powerful machines are renowned for providing outstanding productivity and efficiency in document workflows. Yet, as technology has made sending digital information to email and network locations possible at the press of a button, the security of the documents at every stage of their life cycle has become a critical part of office workflows. Company policies and government regulations increasingly require stringent controls to help protect the privacy of information.

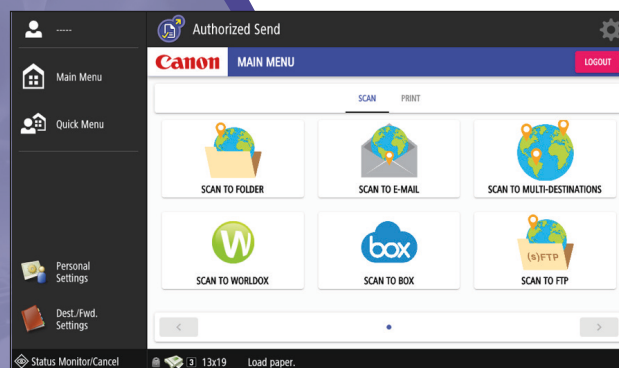
Gaining better control of how users transmit, receive, maintain, retain, collaborate, and destroy information is becoming increasingly important. Many local, state, and federal regulations now require audits and the ability to track, log, and examine those transactions is now paramount to everyday business practices.

OVERVIEW

Authorized Send (A-Send) is a MEAP application developed by Canon U.S.A. This serverless application is installed and operated on a third generation imageRUNNER ADVANCE device and is now available in a new offering.

Authorized Send can help your organization manage its information.

- Maintain productivity by allowing users to perform common walk-up operations, such as basic copying, without locking down the device.
- Reduce administrative burdens for MFP and document management.
- Restrict scanning and sending capabilities to authorized users while controlling who can receive transmitted documents.
- Offer preconfigured capture.
- Process and route scan workflows to single or multiple destinations, which can increase efficiency and help reduce manual errors and/or lost documentation.
- Allow authorized users to print from their folder structure directly at the interface, which can provide organizations the ability to have the most up-to-date information—such as forms and company documentation—available to its users. This also reduces excess prints and helps reduce waste.



“FOUNDATION” PRODUCT WITH “ADD-ON” OPTIONS

Authorized Send v7 is available as a “foundation” product with “add-on” options. Foundation products are stand-alone offerings that you can build on with add-ons as your organizations needs change and grow. This allows you to choose only what you need at that time and provides the option to continue to enhance your capture capabilities in the future.

Foundation Products	
A-Send Foundation comes with the following features:	A-Send to Fax Foundation comes with the following features:
<ul style="list-style-type: none"> • Scan to Folder/Print from Folder • Scan to Email • Scan to FTP • Scan to SharePoint/Print from SharePoint • Scan to Cloud/Print from Cloud (Google and Box) • Scan to Fax • Scan to iFax 	<ul style="list-style-type: none"> • Scan to RightFax • Scan to Fax2Mail

Add-On Products			
A-Send Add-On comes with the following features:	A-Send to Fax Server Add-On comes with the following features:	A-Send to Bar Code Recognition Add-On comes with the following features:	A-Send to Worldox Add-On comes with the following features:*
<ul style="list-style-type: none"> • Scan to Folder/Print from Folder • Scan to Email • Scan to FTP • Scan to SharePoint/Print from SharePoint • Scan to Cloud/Print from Cloud (Google and Box) • Scan to Fax • Scan to iFax 	<ul style="list-style-type: none"> • Scan to RightFax • Scan to Fax2Mail 	<ul style="list-style-type: none"> • UPC-A and UPC-E • EAN-8 and EAN-13 • Code 39 • Code 128 • QR Code • ITF • RSS-14 (Stacked and Limited) • Data Matrix 	<ul style="list-style-type: none"> • Favorite Matters • Quick Profiles • Workspaces • Bookmarks • Profile Groups

		Foundations	
		A-Send	A-Send to Fax
Add-Ons	A-Send Add-On		✓
	Worldox Add-On	✓	✓
	Fax Add-On	✓	
	Barcode Add-On	✓	✓

* Authorized Send enables Scan to Worldox.

SHARE INFORMATION, DOCUMENTS, AND IDEAS EFFICIENTLY

Organizations today need to be more focused on how they transmit, receive, maintain, retain, collaborate, and destroy information. Authorized Send v7 enables users to easily scan and index business-critical information to their appropriate locations, thereby making it easier than ever to save and share information.

THE AUTHENTICATION ADVANTAGE

With Canon A-Send installed on your Canon third generation imageRUNNER ADVANCE system, authorized users can send scanned documents via email, fax, and fax servers. Scanned documents can also be sent to an FTP server, SMB folder, Advanced Box, SharePoint Servers, and even multiple Google Drive and Box destinations with just a few taps of the touchscreen.

Common walk-up functions, such as copying and Mail Box, can still be available to any user without authentication. Yet, without impacting everyday access, A-Send allows control of document distribution required by many companies and government agencies. It's the ideal mix of security features, flexibility, and productivity.

When the optional Smart Card Service (SCS)* is installed on an imageRUNNER ADVANCE system, A-Send can support Common Access Card (CAC) environments and authenticates against Public Key Infrastructure (PKI) and Personal Identity Verification (PIV) servers, helping to reduce security vulnerabilities.

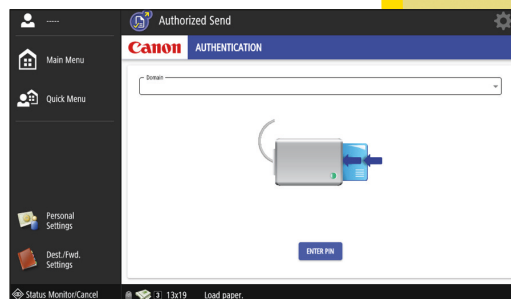
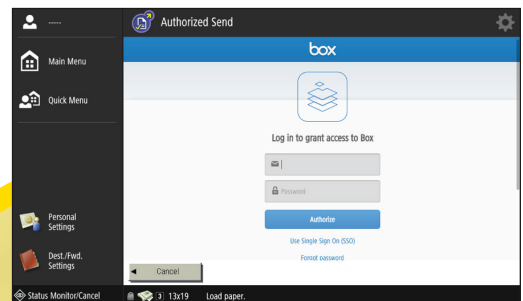
A-Send can also support ULM (Universal Login Manager) Integration. Users can log in with their MEAP log-in application and link with their A-Send users accounts. User credentials can be preserved to scan documents to shared folders or other destinations.

PREVIEW AND DELETE BLANK PAGES

Document preview allows users to preview scans and even choose pages to delete prior to sending. Blank Page removal** automatically identifies blank pages in the scan job based on total toner coverage on the page. The sensitivity level can be adjusted to optimize page detection accuracy.

FAST, SIMPLIFIED DISTRIBUTION

Authenticated users simply log in to A-Send with their user name and password or smartcards to access A-Send and its functions. Scanned documents can then be distributed quickly to preset groups of approved recipients. Authorized users can also create new folders to store archive scanned documents or just send to specific individuals.



* Installation of optional Smart Card Service requires professional services, which are sold separately.
** Not available on imageRUNNER ADVANCE 4000 or imageRUNNER ADVANCE 8200.

SERVERLESS AND EASY TO USE

Company initiatives and compliance strategies only work when IT and users alike adopt the solution. Authorized Send v7 is a simple-to-install, serverless, feature-rich application providing users one-touch access to their most frequently used scan workflows with an easy-to-use interface.

INTUITIVE/CUSTOMIZEABLE OPERATION

Users entering their name and password have quick access to a simple touchscreen interface that puts A-Send controls and choices at their fingertips. The Job-Build function lets users scan multiple documents and send them by email or to predetermined folders.

Standardized buttons control scanning and faxing functions that can be quickly adjusted for paper size, image resolution, brightness, color, image mode, simplex or duplex, and file format. Addresses of recipients can be automatically prepopulated as the destinations and users can search the address book for additional names or add new ones as needed.

Administrators can create “Favorite” one-touch buttons based on users’ common requirements, thereby providing simplicity, convenience, and helping to reduce user errors. For example, buttons can be set up for frequently used workflows, destinations, and specific distribution lists.

CLEAR FILE NAMES

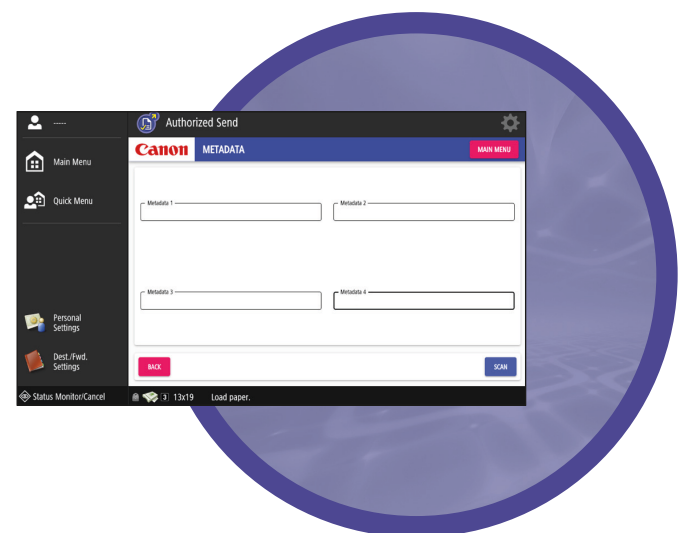
With documents growing in complexity and volume every day, it’s more important than ever that file names be easily understood, especially when multiple documents are combined in a single file. Using a syntax predefined by the administrator (User Name, Date, Time, Device IP, plus up to eight User Input Fields), A-Send users can define and create file names that will make sense to all recipients.

The contents of user input fields can be modified and the scanned document’s file name is automatically populated with a user name/time/date stamp to aid tracking.

To further help clarify the information being transmitted, A-Send allows the option of adding multiple fields of metadata to documents in XML or Text format, facilitating archiving and ease of use.

WEB ADMIN USER INTERFACE AND CONFIGURATION DISTRIBUTION

A web-based servlet residing on a Canon imageRUNNER ADVANCE MFP* lets administrators configure all scanning, faxing, and distribution settings on a single, similar MFP, then distribute that configuration to other machines. Based on organizational requirements, virtually all features and settings can be enabled or disabled, both globally and for individual users, providing flexibility for users and user access rights where it’s desired. Having functions defined by the administrator helps to simplify operation and helps ensure that users follow procedures for increased efficiency, device control, and productivity. In addition, the administrator can control the application’s images and colors to provide brand identity within the application.



* To assign rights to individual user level, a log-in application (ULM) and Access Management System (AMS) are required; both are included in third generation imageRUNNER ADVANCE.

HELP SAFEGUARD COMMUNICATIONS

Authorized Send v7 can be easily configured. It's designed to tap into your organization's existing workflow while helping users increase efficiency and productivity. Track, log, and audit those with the ability to send your core business information inside and outside your organization.

SERVERLESS

Shifting hosting, processing, storage, and input/output onto a single device eliminates the need to invest in, and support, costly dedicated application servers. Excellent for environments with large storage requirements yet relatively few applications, serverless technology is well-suited for offices where printing, scanning, and faxing are parts of a mission-critical workflow. A-Send takes the pressure off users and administrators by letting them focus on their jobs, without worrying about server reliability and performance.

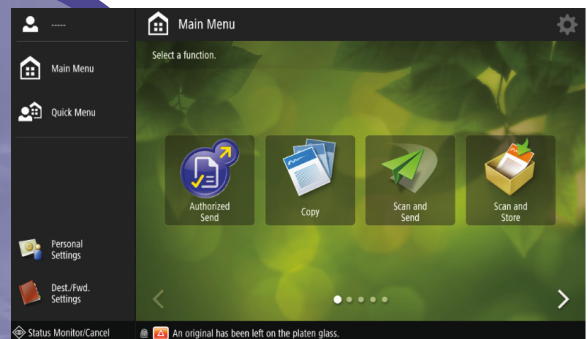
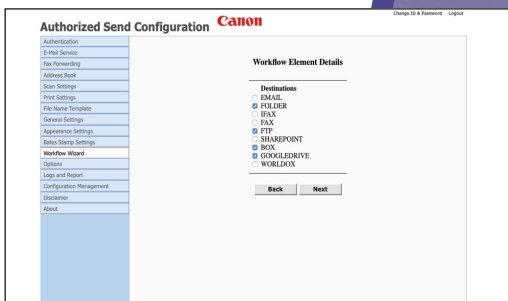
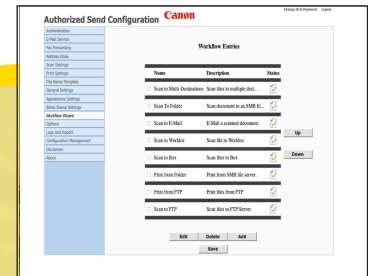
USER ACCESS CONTROL

The customizable A-Send makes it ideal for many corporate environments and select government agencies or departments. It provides the control and accountability needed for documents, from scanning through distribution.

STREAMLINED DISTRIBUTION AND DEPLOYMENT

A-Send raises the bar on convenience and efficiency. Documents can be seamlessly scanned and distributed to a variety of destinations from a single MFP with just the touch of a few buttons. It's easy to set up in multiple offices to ensure the same features and settings are in each location.

With A-Send and your Canon imageRUNNER ADVANCE system,* you get powerful document distribution for your critical business communications.



* To assign rights to individual user level, a log-in application (ULM) and Access Management System (AMS) are required; both are sold separately.

AT-A-GLANCE

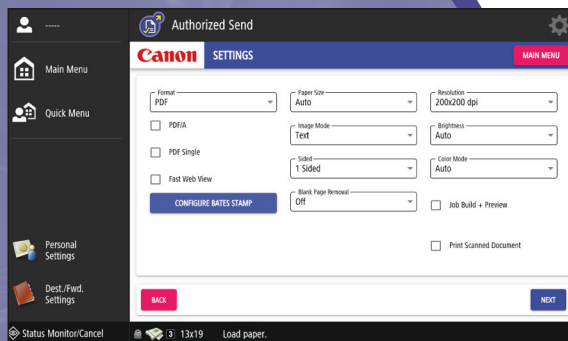
Robust features provide organizations with virtually endless possibilities for scan destinations and distribution choices.

AUTHENTICATION

- Provides individualized user authentication to help with flexibility and security with rights assigned to users
- Supports multiple authentication protocols, including Kerberos, NTLM, Simple Binding, and Anonymous Binding*
- Enables administrator's authentication, allowing access without end users having to provide sign-in credentials
- ULM integration

SCANNING AND DISTRIBUTION CHOICES

- Scan documents to email, networked folders, FTP/S-FTP/FTP-S servers and Microsoft® SharePoint® servers (2007/2010/2013/2016), analog fax lines, fax servers, Advanced Box, RightFax, Box.com,** Google Drive,** or multiple destinations
- Scan to SMB folder, including user's Home Folder and Shared Folders
- Support Distributed File System (DFS) for stand-alone DFS root folders and Share Clustered File Servers
- Create image or PDF documents
- Browse sub-folders to store related documents
- Create up to eight fields of metadata and include with scanned documents for enhanced identification and tracking
- Easily rescan and send documents to the same destination repeatedly
- Transmit documents automatically to users' Home Folder
- Create file names using predefined syntax at Canon MEAP-enabled imageRUNNER ADVANCE MFPs
- Support for SMB v2
- Support for SMB v3 including the following:
 - Scan to Folder where the share destination supports SMB v3 with features including signing and encryption (if enabled)
- Scan to Folder where the share destination is located on failover or scale-out clustered servers.





AUTHORIZED SEND Version 7

EXISTING SUPPORTED MODELS

- imageRUNNER ADVANCE 6555i/6565i/6575i/6555i II/6565i II/6575i II
- imageRUNNER ADVANCE 6555i III/6565i III/6575i III
- imageRUNNER ADVANCE 8505i III/8595i III/8585i III
- imageRUNNER ADVANCE C5535i/C5540i/C5550i/C5560i/C5535i II/C5540i II/C5550i II/C5560i II
- imageRUNNER ADVANCE C5535i III/C5540i III/C5550i III/C5560i III
- imageRUNNER ADVANCE C7565i/C7570i/C7580i/C7565i II/C7570i II/C7580i II
- imageRUNNER ADVANCE C7565i III/C7570i III/C7580i III
- imageRUNNER ADVANCE 4525i/4535i/4545i/4551i/4525i II/4535i II/4545i II/4551i II
- imageRUNNER ADVANCE 4525i III/4535i III/4545i III/4551i III
- imageRUNNER ADVANCE C3525i/C3530i/C3525i II/C3530i II (Scan to Fax is not supported)
- imageRUNNER ADVANCE C3525i III/C3530i III (Scan to Fax is not supported)
- imageRUNNER ADVANCE C255iF/C355iF (Scan to Fax is not supported)
- imageRUNNER ADVANCE C256iF II/C356iF II/C256iF II/C356iF II (Scan to Fax is not supported)
- imageRUNNER ADVANCE C256iF III/C356iF III/C256iF III/C356iF III (Scan to Fax is not supported)
- imageRUNNER ADVANCE 525iF/525iFZ, 615iF/615iFZ, 715iF/714iFZ (Scan to Fax is not supported)
- imageRUNNER ADVANCE 525iF II/525iFZ II, 615iF II/615iFZ II, 715iF II/714iFZ II (Scan to Fax is not supported)
- imageRUNNER ADVANCE 525iF III/525iFZ III, 615iF III/615iFZ III, 715iF III/714iFZ III (Scan to Fax is not supported)



USA.CANON.COM/SOFTWARE



Canon and imageRUNNER are registered trademarks of Canon Inc. in the United States and may also be registered trademarks or trademarks in other countries. All other referenced product names and marks are trademarks of their respective owners. Some items may not be available at this time; please check for availability. Specifications and availability subject to change without notice. Not responsible for typographical errors.
©2019 Canon U.S.A., Inc. All rights reserved.