

Strongcoat is a two-component virtually solvent free epoxy floor coating offering excellent abrasion and chemical resistance.

Strongcoat provides a tough, hard wearing coating for medium duty traffic giving high film build and wear resistance.

Also available in: Low-temperature Curing or Fast Cure and Anti-slip options.



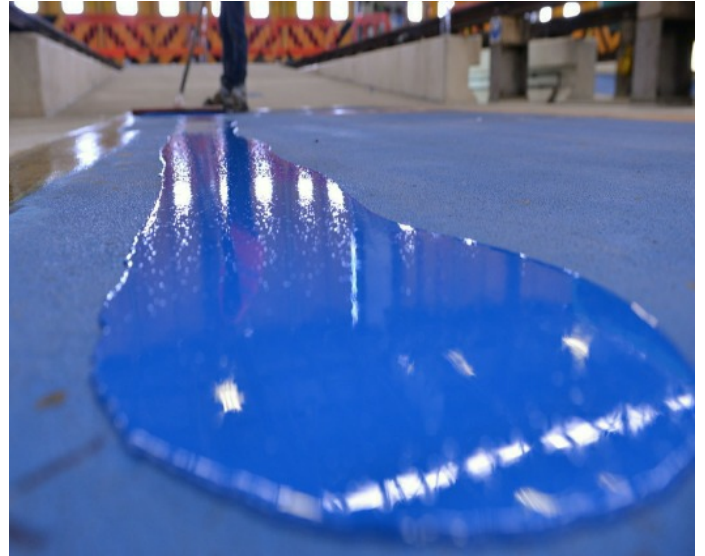
Strong



Anti-slip



Easy to clean



FeRFA Classification

BS 8204 Type 3.

Colours*

Available in a selection of standard colours. A large selection of BS 4800 or RAL colours are available upon Request.

* Strongcoat is not 100% colour fast and may yellow over time. The rate of change will depend on UV light and heat levels and cannot be predicted. This will be more pronounced with lighter colours and blue shades and does not compromise the product's performance or chemical resistance characteristics.

Appearance

Gloss finish in a range of attractive colours. Can have a textured finish with the addition of Anti-slip Aggregate.

Advantages

- ✓ Protects concrete from oil and chemical spillages
- ✓ High build with excellent wear resistance
- ✓ Virtually solvent free
- ✓ Non-dusting
- ✓ Slip-resistant options available

Suitable Substrates

Concrete and polymer modified cementitious screeds.

Uses

For medium duty areas requiring an easy to clean, tough and durable coating with excellent chemical resistance such as warehouses, factories, workshops, showrooms, packing and storage areas. Can also be used as a sealcoat for broadcast systems such as Intermediate Car Park Decks. Strongcoat is suitable for regular foot traffic, light duty fork lift truck traffic and occasional hard plastic-wheeled trolleys.

Pack Size

5, 10 and 15 kg units.

Components

Each unit of Strongcoat comprises of: one part Resin and one part Hardener.

Project References

Airport Fire station in Hampshire, Selhurst Train Depot.

VIRTUS RESINS

The Shippon, Faenol

Pentrecelyn

Ruthin LL15 2SP

Tel: 01978 790 744

Tel: 0843 289 8422

Email: info@epoxyresinsuppliers.co.uk

www.epoxyresinsuppliers.co.uk



virtusresins
Epoxy resin suppliers

Thickness

Approximately 400 microns (0.4mm) from two coats.

Chemical Resistance

Good Chemical Resistance, please consult us on specific materials.

Slip Resistance

Note: The slip resistance of a floor surface can vary as a result of the installation process, conditions at the time of application and subsequent traffic. Inappropriate cleaning or maintenance can adversely affect the performance. For further advice on potential wet areas please contact us.

Typical Properties, 7 days at 23 °C*

BS 8204-6	Type 3
Adhesion to concrete (BS EN 1504-2) (concrete failure)	>1.5 MPa

The typical physical properties given above are derived from testing in a controlled laboratory environment. Results derived from testing field-applied samples may vary dependent upon site conditions.

Cure Schedule at 20 °C*

Working life of full packs* 25 minutes

* Usable working life of material following mixing and immediate spreading as per the application instructions.

Finished floor*

Over coating time	16 - 36 hours
Cure time to pedestrian traffic	24 hours
Full chemical resistance	7 days

The floor should be protected from contact with water for at least 7 days.

* These cure times are approximate and given as a guide only. These times can vary due to prevailing site conditions. At lower temperatures curing times will be extended. If the over coating interval of 36 hours is extended, the first coat should be abraded to ensure inter-coat adhesion.

Pack Size

5, 10 and 15 kg units

Coverage (nominal 0.5 mm thickness)*

The coverage rate will vary depending on the texture and porosity of the substrate, film thickness and application technique. Two coats are normally sufficient but on very porous substrates, an initial coat of Flowprime SF may be required. As a guide:

Normal substrate: 1st coat - 375 g/m²
2nd coat - 250 g/m²

* Coverage figures given are theoretical. Practical coverage rates may vary due to wastage factors and the type, condition, profile and porosity of the substrate.

Application Conditions

Strongcoat is a relatively viscous coating. Do not apply outside of the range 10 °C to 25 °C. Localised heating or cooling equipment may be required outside this range to achieve ideal temperature conditions.

To reduce the risk of “blooming” caused by condensation, the climate above the uncured floor should be maintained at least 3°C above the dew point for at least 48 hours after application.

Surface Preparation

Concrete

Concrete substrates must be a minimum of 28 days old, dry, clean and free of surface laitance and contaminants such as dirt, oil, grease, poorly bonded coatings and surface treatments. Inadequate preparation will lead to loss of adhesion and failure. In coatings, there is a tendency for the finish to mirror imperfections in the substrate. Grinding, or light vacuum-contained shot-blasting is therefore preferred over planing for these systems.

Concrete must include a functional damp-proof membrane.

Priming

Strongcoat does not normally require a primer on dry substrates. When treating extremely porous or damp concrete, prime as follows:

Substrate relative humidity <75%: Flowprime SF (Weak or porous)
Substrate relative humidity >75%: Flowprime DPM ('green' concrete)

Application

Best results are obtained in warm conditions (minimum 15 °C). Apply with a medium pile simulated sheepskin roller working well into the surface taking care not to exceed the coverage rate. Edges and difficult to reach areas may be applied thinly by brush.

An anti-slip finish may be achieved by fully sprinkling the first coat with kiln dried silica sand at 3 - 4 kg/m². Allow the first coat to fully cure (24 hours at 15 °C or longer in colder temperatures) then remove all excess sand with a stiff broom and vacuum and apply a second coat to encapsulate the grains. Coverage rate will depend on surface profile but will be significantly greater than for the first coat. As a guide:

Sand Grading	Maximum Coverage	Achievable PTV (BS 7976-2)	
		Dry	Wet
mm	m ² /kg		
0.3 - 0.6	2.5	≥40	≥40
0.7 - 1.2	1.5	≥55	≥55

Note: These coverage figures are approximate as silica sand grading can vary widely as can site conditions. If in doubt, order extra material to account for wastage or install a test area prior to starting works. The pendulum test values given above are derived from testing in a controlled laboratory environment and are given for guidance only. Results derived from testing field-applied samples may vary dependent upon site conditions and application technique. Slip resistance can reduce over time due to poor maintenance, general wear or surface contaminants. Good housekeeping practices should be observed.

Technical Data

Mixing

Materials should be stored at 15 °C to 25 °C for a minimum of 8 hours prior to use. Pre-mix the coloured resin component before use. Add the hardener component to the coloured resin component and mix using a low speed electric mixer (200 - 500 rpm) for at least 3 minutes until homogeneous. Use a spatula to scrape the sides and bottom of the mixing vessel several times as unmixed material will result in uncured patches in the final finish.

Pot Life

Mixed material must be used immediately. When mixed, a chemical chain reaction takes place which creates heat and further reduces pot life. High ambient temperatures will reduce pot life.

Important: Both liquids are pre-weighed and designed to be mixed together in their entirety. It is essential that the full amounts are mixed together and until homogenous to ensure the product cures correctly and to the desired finish.

Cleaning

Tools and equipment should be cleaned whilst the resin is still wet with a suitable solvent. Strongcoat can be easily cleaned using industry standard cleaning chemicals and techniques designed for epoxy resin flooring. Test cleaning agents prior to use. Do not steam clean or subject to temperatures in excess of 60 °C.

Health and Safety

Refer to product Safety Data Sheet before use.

Before using this product, please ensure that you have received and read the product Safety Data Sheet. Refer to hazard labelling on the product. Wear gloves and avoid contact with skin and eyes.

Precautions

Remove food products from the area during application and curing. As with all high gloss paint finishes, scratching of the surface may occur with use due to surface contamination and abrasion. In common with all smooth floor finishes, Strongcoat may become slippery under certain conditions. In areas of chemical spillage, please consult our Technical Department for specific advice.

EU Directive 2004/42/EC

Complies with category j type SB (< 500 g/l).

Shelf Life

12 months if stored in accordance with the above recommendations.

Limitations

Do not proceed with application if atmospheric relative humidity is, or is anticipated to be >75% or if the surface temperature is <3 °C above the dew point. Application should not commence when the substrate temperature or the ambient temperature is, or is anticipated to be <10 °C during the application or within the curing period. The manufacture of Strongcoat is a batch process and despite close manufacturing tolerances, minor variations in shade may occur between batches. Products from different batches should not be used on the same surface or surfaces close together. If mixed batches are unavoidable, it is best practice to use the different batches only in areas where the colour cannot be directly compared. Touching up should only be attempted using product from the same batch using the same application methods. Product should be reserved specially for this purpose. It is recommended that touching up is carried out up to a break in the floor or surface.

Technical Advice

For further information on this or any other Virtus product, please contact our office.

Note: The information contained in this document, and all further technical advice given is based on our present knowledge and experience. However, it implies no liability or legal responsibility on our part. In particular, no warranty or guarantee of product performance in the legal sense is intended or implied as the conditions of use and the competence of any labour involved in the application are beyond our control. Properties listed are for guidance purposes only. We reserve the right to make any changes according to technological progress or further developments.

Availability

3 - 5 working days. **Country of Manufacture:** United Kingdom.

Virtus Resins, The Shippon, Pentre-Celyn, Ruthin LL15 2SP, England			
CE		13	DOP RV0026
EN 13813 SR-B2,0-AR0,5-IR9 Synthetic resin screed material for use internally in buildings not subject to reaction to fire regulations			
Reaction to fire	NPD	Impact resistance	IR9
Release of corrosive substances	SR	Sound insulation	NPD
Water permeability	NPD	Sound absorption	NPD
Wear resistance	AR0,5	Thermal resistance	NPD
Bond strength	B2,0	Chemical resistance	NPD

Disclaimer: FeRFa (The Resin Association) do not consider anhydrite, hemi-hydrate, and calcium sulphate screeds to be suitable for overlayment with resin floor finishes.

VIRTUS RESINS

The Shippon, Faenol

Pentrecelyn

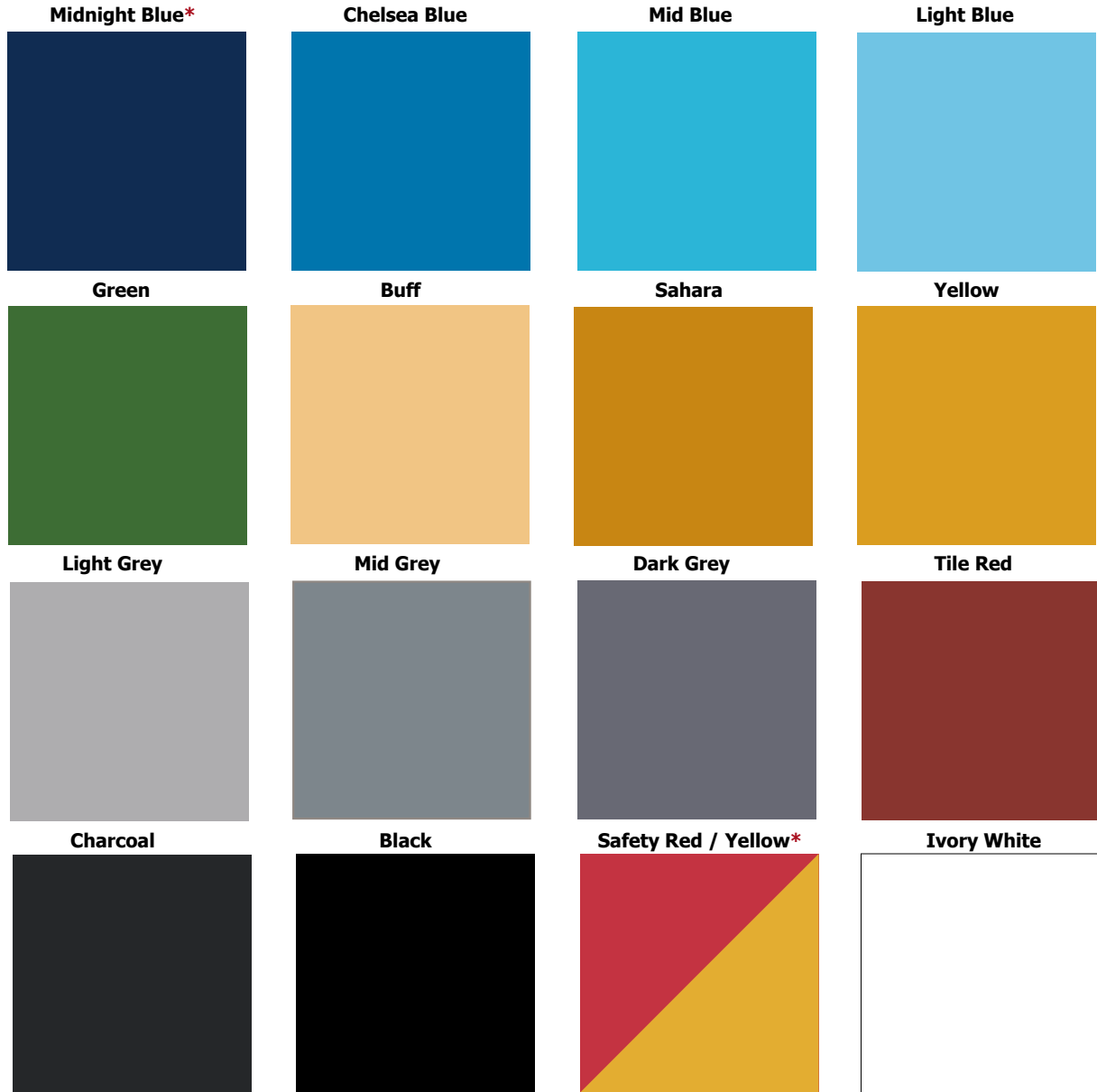
Ruthin LL15 2SP

Tel: 01978 790 744

Tel: 0843 289 8422

Email: info@epoxyresinsuppliers.co.uk

www.epoxyresinsuppliers.co.uk



The colours shown may differ from the original product due to reprographic and technological media variations. The same colour in different products may also vary due to the composition and texture of the final finish.

Samples: If colour and final aesthetics are of concern, please contact us to request an actual hard sample of the colour and system required.

* Surcharge applies