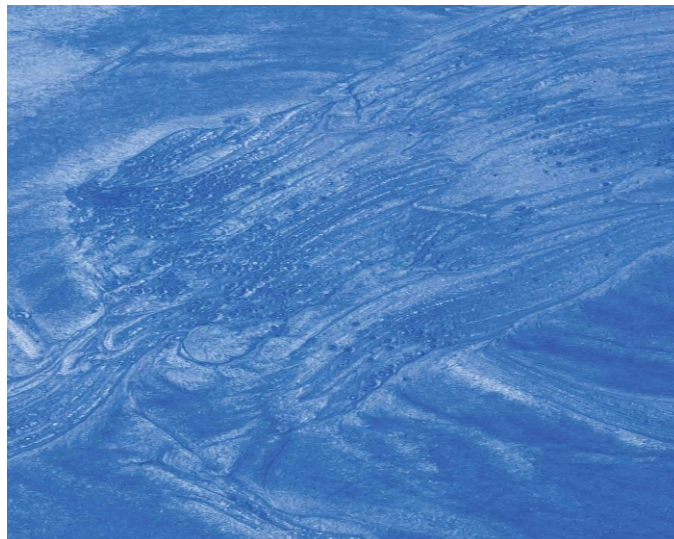


A range of coated mica-based pigments used to create metallic, iridescent and pearlescent effects in resinous flooring.

Can be adapted to give both natural mineral looks or creative, colourful effects.

Metallic Effect Pigment Powders are suitable for many applications, including direct resin systems and cementitious pigmentation.



### How It Works

Behind the attractive shimmer is the process of reaction contributed to by the particle composition which consists of a mica substrate with a metal oxide coating. The layering effect interacts with light and the resultant colour is dependent on the thickness of the metal oxide layer.

The principle of refraction shows at boundary layers, for example glass and air, white light is broken up and divided into its component colours.

The greater the difference between refraction indexes of the adjacent materials, the stronger the refraction.

This is the key feature of classic metallic effect pigments and it is the difference in colour between the proportion of the incoming light which is reflected by the pigment.

The colour of the transmitted light complements the colour of the reflected light.

### Suitable Substrates

Metallic Effect Pigment Powders are suitable for many applications, including direct resin systems and cementitious pigmentation.

### Pack Size

1, 5, 10, 25 kg or as required.

### Commodity Code

2525200000

### VIRTUS RESINS

The Shippon, Faenol  
Pentrecelyn  
Ruthin LL15 2SP

**Tel:** 01978 790 744

**Tel:** 0843 289 8422

**Email:** [info@epoxyresinsuppliers.co.uk](mailto:info@epoxyresinsuppliers.co.uk)

**[www.epoxyresinsuppliers.co.uk](http://www.epoxyresinsuppliers.co.uk)**

## Sample Production Method

The Metallic Effect Pigment samples have been produced using a two part Epoxy resin system, with Metallic Effect Pigment powder being added at a ratio of 3 - 5%. Therefore, you will require 0.3/0.5kg of Pigment per 10kg of Resin.

The decorative finish is achieved by agitating the surface prior to the system curing.

Metallic Effect Pigment Powders can also be used within other resin systems, and for other applications such as Polyurethane and MMA.

Samples are available for testing. Please contact us for more information.

## Physical Properties

Physical Properties	Group 1 Colours: Bronze, Brown, Green, Red, Yellow	Group 2 Colours: Beige, Blue, Dark Grey, Silver Grey, White
pH (at 100 g/l 20 °C)	6 - 9	8 - 11
Relative Density (g/cm <sup>3</sup> at 20 °C)	3.1 - 3.3	2.8 - 3.0
Bulk Density kg/m <sup>3</sup>	290 - 320	170 - 210
Water Solubility at 20 °C	Insoluble	Practically Insoluble
Particle Size	10 - 60 µm	10 - 60 µm
Oxidising Properties	None	None

### VIRTUS RESINS

The Shippon, Faenol  
Pentrecelyn  
Ruthin LL15 2SP

**Tel:** 01978 790 744

**Tel:** 0843 289 8422

**Email:** [info@epoxyresinsuppliers.co.uk](mailto:info@epoxyresinsuppliers.co.uk)

**[www.epoxyresinsuppliers.co.uk](http://www.epoxyresinsuppliers.co.uk)**

**Beige**



**Silver Grey**



**Blue**



**Dark Grey**



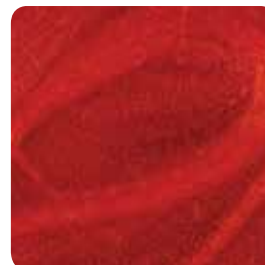
**Brown**



**Bronze**



**Red**



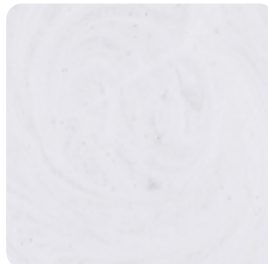
**Green**



**Yellow**



**White**



The colours shown may differ from the original product due to reprographic and technological media variations. The same colour in different products may also vary due to the composition and texture of the final finish.

**Samples:** If colour and final aesthetics are of concern, please contact us to request an actual hard sample of the colour and system required.

**VIRTUS RESINS**

The Shippon, Faenol  
Pentrecelyn  
Ruthin LL15 2SP

**Tel:** 01978 790 744

**Tel:** 0843 289 8422

**Email:** [info@epoxyresinsuppliers.co.uk](mailto:info@epoxyresinsuppliers.co.uk)

**[www.epoxyresinsuppliers.co.uk](http://www.epoxyresinsuppliers.co.uk)**