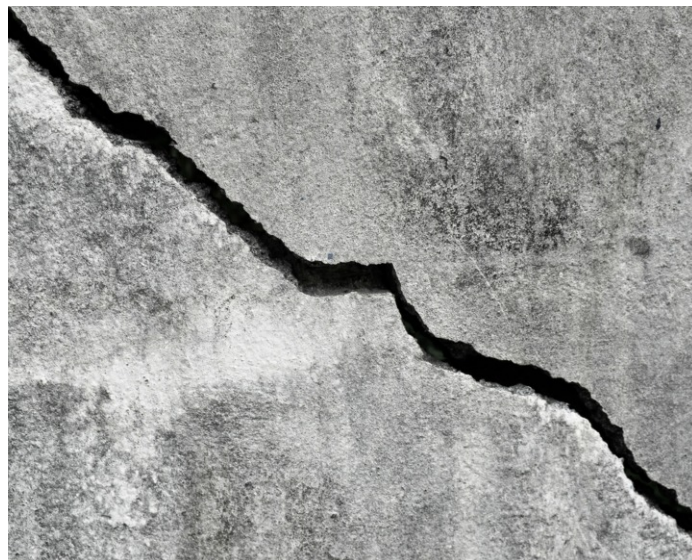


FlowPatch Repair Fine Fill Grade is a three-component solvent free rapid setting high strength epoxy repair mortar. The fine aggregate grading allows easy application with hand tools from 25 mm down to a feather edge providing a well compacted impermeable repair with excellent resistance to abrasion, chemical attack and virtually no shrinkage. A feather edge is always a weak point in a repair.



Strong



Interior



Trowel-applied

Appearance

Smooth impervious surface with a grey 'concrete' colour.

Uses

Repairs to damaged concrete floors, pre-cast concrete units, spalled joint arises, kerbstones, damaged steps etc. Can be also be used to form falls.

Advantages

- ✓ High strength for heavy wear areas
- ✓ Easily applied using hand tools
- ✓ Fast curing
- ✓ Impermeable and non-dusting
- ✓ Solvent free
- ✓ Good chemical resistance

Pack Size

6 kg and 18 kg units.

Components

FlowPatch Repair Fine Fill Grade is a 3 - pack product comprising of: resin, hardener and filler components. All components are carefully pre-weighed and ready to mix.

Suitable Substrates

Thoroughly prepared concrete, polymer modified sand and cement screeds, asphalt.

VIRTUS RESINS

The Shippon, Faenol
Pentrecelyn
Ruthin LL15 2SP

Tel: 01978 790 744

Tel: 0843 289 8422

Email: info@epoxyresinsuppliers.co.uk

www.epoxyresinsuppliers.co.uk



virtusresins
Epoxy resin suppliers

Thickness

Applied between 25 mm to feather edge. Full strength is achieved from 5 mm upwards.

Cure Schedule at 20 °C

Working life of full packs*	30 minutes
Foot Traffic	4 hours
Heavy Duty Traffic	6 hours
Full Mechanical and Chemical Cure	7 days

These times can vary due to prevailing site conditions. And are given as a guide only. At lower temperatures curing times will be extended and below 10 °C curing will be extremely slow or may stop.

* Usable working life of material following mixing and immediate spreading as per the application instructions.

Pack Size

6 and 18 kg packs.

Coverage*

Apply at approximately 2 kg/m² per 1 mm thickness. A 6 kg pack yields approximately 3 litres of mixed material.

*Coverage figures given are theoretical. Practical coverage rates may vary due to wastage factors and the type, condition, profile and porosity of the substrate.

Typical Properties 20 °C*

Compressive strength (7 days)	90 N/mm ²
Tensile strength (7 days)	16 N/mm ²
Flexural strength (7 days)	27 N/mm ²
Bond strength to concrete (7 days)	> 3 N/mm ² (substrate failure)

*The typical physical properties given above are derived from testing in a controlled laboratory environment. Results derived from testing field- applied samples may vary dependent upon site conditions.

Surface Preparation

Concrete

Concrete substrates must be a minimum of 28 days old, dry (< 75% RH), clean and free of surface laitance and contaminants such as dirt, oil, grease, coatings and surface treatments. Inadequate preparation will lead to loss of adhesion and failure. Surfaces should be thoroughly mechanically prepared by scabbling or grit-blasting to leave a roughened profile.

Steel

Remove loose or flaking material, rust and previous coatings by wire brushing or grinding to provide a bright surface. Grease and oil should be removed with a suitable de-greaser and allowed to dry. Prime immediately to prevent flash rusting.

Priming

Using **Flowprime TC**, pour the entire contents of the hardener container into the resin tub and mix thoroughly until homogeneous. Use a spatula to scrape the sides and bottom of the container several times as unmixed material will result in uncured patches in the primer and loss of adhesion. Apply a thin (250 to 500 microns), continuous layer to the work area using a stiff brush.

Place the mixed FlowPatch Repair Fine Fill Grade within 15 minutes and 1 hour of priming whilst the primer is still tacky. If the primer is absorbed by porous substrates, re-prime before placing FlowPatch Repair Fine Fill Grade.

Application Conditions

Do not apply outside of the range 10 °C to 25 °C. Localised heating or cooling equipment may be required outside this range to achieve ideal temperature conditions.

Mixing

FlowPatch Repair Fine Fill Grade consists of three pre-proportioned components. Under no circumstances should part mixing of units be carried out. Materials should be stored at 15 °C to 25 °C for a minimum of 8 hours prior to use.

Thoroughly re-mix the resin until consistent colour and pour the entire contents of the resin and hardener components into a suitable mixing vessel taking care to ensure that the bottom and sides of the containers are thoroughly scraped. Mix using a mortar stirrer fitted to a high torque, low speed electric mixer (200 - 500 rpm) until homogeneous. Slowly add the filler component whilst mixing. When all the filler has been added, mix for a further 1 minute or until homogeneous. Use a spatula to scrape the sides and bottom of the vessel several times as unmixed material will result in uncured patches in the final repair. Alternatively, a forced action mixer may be used i.e. Creteangle or Mixal. **Never mix by hand.**

Application

Best results are obtained in warm conditions (minimum 10 °C). Place the mixed material onto the primed surface using a clean trowel ensuring that the mortar is worked well into the surface, edges and cracks. A smooth surface finish can be achieved using a steel float moistened with a very small amount of **Flowsolve**. The mortar should be applied in layers from 10 mm up to 50. For thicker sections, the surface of the under-layer should be roughened or scored to aid adhesion. Subsequent primer and mortar layers can be applied once the under-layer is firm enough to take the working pressure without distorting (approximately 6 hours @ 20°C).

Tool Cleaning

Tools and equipment should be cleaned whilst the resin is still wet with **Flowsolve**.

purpose. It is recommended that touching up is carried out up to a break in the floor or surface.

General Maintenance

FlowPatch Repair Fine Fill Grade can be easily cleaned using industry standard cleaning chemicals and techniques designed for epoxy resin flooring. Test cleaning agents prior to use. Do not steam clean or subject to temperatures in excess of 60 °C.

Health and Safety

Remove food products from the area during application and curing. Smooth finishes may become slippery under certain conditions. In areas of chemical spillage, please consult our Technical Department for specific advice. Before using this product, please ensure that you have received and read the product Safety Data Sheet.

EU Directive 2004/42/EC

VOC content approximately 34 g/l (calculated).

Storage

Materials should be kept dry and stored in a weatherproof building maintained at 15 °C to 25 °C on pallets and away from walls. Consignments should be used in order of batch number. Protect from frost.

Shelf Life

12 months if stored in accordance with the above recommendations.

Limitations

Do not proceed with application if atmospheric relative humidity is, or is anticipated to be >75% or if the surface temperature is <3 °C above the dew point. Application should not commence when the substrate temperature or the ambient temperature is, or is anticipated to be <10 °C during the application or within the curing period. The manufacture of FlowPatch Repair Fine Fill Grade is a batch process and despite close manufacturing tolerances, minor variations in shade may occur between batches.

Note: The information contained in this document, and all further technical advice given is based on our present knowledge and experience. However, it implies no liability or legal responsibility on our part. In particular, no warranty or guarantee of product performance in the legal sense is intended or implied as the conditions of use and the competence of any labour involved in the application are beyond our control. Properties listed are for guidance purposes only. We reserve the right to make any changes according to technological progress or further developments

Availability

3 - 5 working days. **Country of Manufacture:** United Kingdom

Technical Advice

For further information please contact our office.

You Might Also Need:

- Flowprime TC
- Flowprime DPM (where it is impossible to dry out the floor)
- Flowsolve
- Mixing Drill Attachment