

Scan for the latest version  
of the Catalogue



*Fraser*  
*Essentials*  
CANINE COSMETICS

# CATALOGUE

*Created by Exhibitors,  
for Exhibitors*



"Sonic"

Multi BIS BISS CH ToplinePom Sunterra Stars

# OUR STORY

Founder of Fraser Essentials, Michelle Fraser, has had life-long experience with animals, especially dogs.

Together with her parents, Darrell and Maureen, she has been immersed into the world of pure bred dogs for over 45 years. She has owned, bred, groomed and exhibited a variety of breeds of dogs including Papillons, German Shepherds, American Cocker Spaniels, Afghan Hounds, Border Collies, English Springer Spaniels, Pekingese and Grand Basset Griffon Vendeen. Michelle is also licenced to judge toy and working dogs.

Now also a Formulating Chemist, Michelle oversees research & development, formulating and manufacture of products.



Over the years many products have been trialled and tested, with varying degrees of success. Along the way tips have been gathered from old time breeders and those from across the globe. Fraser Essentials brings to you the very best of these combinations and experience, coupled with scientific research, to produce products that assist you in getting the best from your dog whether it be for the show ring or at home as a treasured companion.

For the pet dog, Fraser Essentials products make it easier to keep your dog clean, smelling lovely and simply making them fabulous. We believe having a dog shouldn't be a chore, it should be enjoyable for both you and your pet.

*For the latest News, Tips & Tricks follow us on Social Media*



**YOU TUBE -  
FRASER ESSENTIALS  
TV**



**FACEBOOK**



**INSTAGRAM**

# THE BEST INGREDIENTS

*Results Driven, Scientifically Formulated and Inspired by Nature*

Fraser Essentials products are made in Australia, using Human grade Spa quality ingredients and actives. We use ingredients as per Suppliers research and development information and in concentrations as they are recommended, not just included in small amounts for marketing purposes. That means not cutting corners or using cheaper or second rate ingredients.

All our ingredients are human grade and cosmetic grade. Meaning these are the same ingredients that you would find in high end spa grade human personal care formulations.

Having our own in-house formulating chemist means that we continually evaluate new ingredients and literature to find the best possible raw ingredients for potential product formulations. Raw ingredient manufacturers internationally are always developing new and exciting ingredients and Fraser Essentials is at the forefront in assessing how these products can be effectively used in innovative and new formulations.



# TIPS & TRICKS

Fraser Essentials Shampoos and Conditioners are concentrated and designed to be diluted. Dilution rates are dependant upon the breed, individual dog and coat condition. The rate can extend up to 30:1 on a dog that is regularly bathed and in show condition. As an example of a 30:1 ratio is in a Gatorade Sports Type bottle (600ml) use 9 pumps of product diluted in each bottle. It is suggested to commence with this ratio and vary depending upon each individual dogs requirements. All products can also be used in hydrobaths which will increase the dilution rate even more.

It is suggested to put a little additional product neat on the hands and use on any areas that may need further shampoo or areas like the underside of ears which can get a little greasy.

The whitening and coloured shampoo's can also be used directly onto areas which need a little more sparkle or enhanced colour. The Classic White Shampoo contains no bleaches or optical whiteners so it won't bleach other colours. A little caution should be used when using the Black, Chocolate and Red Shampoo's as they may stain white or other coloured coats. To improve colour leave the shampoo's on the coat for 2 to 3 minutes before rinsing.

The complete Fraser Essentials range of Shampoo's and Conditioners can be combined and diluted together for example our Classic coloured shampoo's with the Coat Stimulant or Squeaky Clean Shampoo's.

Try Fraser Essentials Squeaky Clean Shampoo neat as a gentle clarifying shampoo. It is suggested to include a clarifying shampoo in your grooming regime from time to time or when starting out using the Fraser Essentials range.

Don't forget to always rinse well and then a little more!!

Brushing Spray and the Coat Stimulant Spray can be used on wet and dry coats and also includes a detangler ingredient. Ensure to shake the Sprays before each use. Both products are packaged ready to use and can be used right up to ring side.

Sparkle Spray is designed as a great finishing spray. Ensure that you shake the bottle before each use. Containing lovely essential oils it restores moisture back into the coat without leaving an oily or heavy residue. It is suggested to spray on the hands, lightly rub hands together and then over the coat of the dog.

Melt Matts Away is a favourite of groomers and exhibitors of long coated dogs. Apply spray on the matts before brushing or combing. For larger matts apply spray and then work into problem areas with the fingers, gently teasing apart the problem areas. Leave for a few minutes and then gently brush. Vitamin B5 will assist in moisturising the coat and help in preventing future matts. Packaged in a ready to use spray bottle.

# GROOMING SPRAYS



Scan for more  
information

**PACKAGED READY TO USE.  
ALL FRASER ESSENTIALS GROOMING SPRAYS ARE AVAILABLE IN A 250ML  
MIST SPRAY BOTTLE AND 1 LITRE REFILL**



## BRUSHING SPRAY

The ideal grooming spray to use on all coats during grooming. Apply an even mist of spray on either wet or dry coats before brushing. Fraser's Brushing Spray will assist in loosening and preventing smaller knots while moisturising and restoring. The unique blend of natural essential oils will help to calm both you and your dog while being gentle on the skin. Comes packaged in a ready to use spray bottle. Ingredients include: Lavender Oil, Lemon Cold Pressed Oil, Pine Oil, Australian Sandalwood Oils.

## COAT STIMULANT SPRAY

A grooming spray with a unique blend of natural essential oils that will help to encourage coat growth while moisturising, restoring and strengthening. Apply an event mist of spray on either wet or dry coats before brushing. Will not leave coat greasy or oily. Ingredients include Peppermint, Rosemary, Cedarwood & Lavendar Oils



## MELT MATS AWAY DETANGLER SPRAY

Also known as the Groomers best friend!  
Apply spray on matts and knots before brushing or combing. For larger matts apply spray and then work into problem area with fingers, gently teasing apart the coated area. Vitamin B5 will assist in moisturising the coat and help in preventing future matts. Infused with Lime Cold Pressed Oil



# SHAMPOO



Scan for more  
information

**FRASER ESSENTIALS SHAMPOO PRODUCTS ARE CONCENTRATED AND DESIGNED TO BE DILUTED. WE SUGGEST A STARTING DILUTION RATE OF 1 PART SHAMPOO TO 30 PARTS WATER. SHAMPOO PRODUCTS CAN BE DILUTED TOGETHER WITH THE OTHER SHAMPOOS IN THE FRASER ESSENTIALS RANGE. AVAILABLE IN 250ML AND 1 LITRE PUMP BOTTLES**



## COAT STIMULANT SHAMPOO

A Shampoo which not only cleans, but encourages coat growth. Coat Stimulant Shampoo is Paraben & Sulphate free. It's an invigorating shampoo designed to improve circulation of the skin, which in turns assists in promoting hair growth. Ingredients include the essential oils of Peppermint, Cedarwood, Rosemary and Geranium all of which traditionally have been used to help stimulate hair growth.

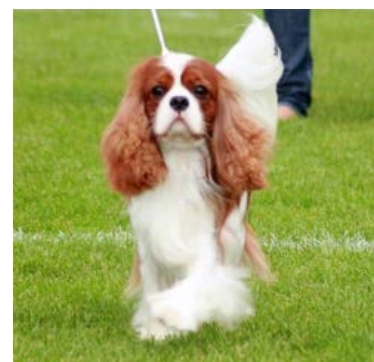
## SQUEAKY CLEAN SHAMPOO

A shampoo that is formulated to gently cleanse while at the same time leaving a bright shine and smell. Essential oils have been selected to provide antibacterial and antiseptic qualities. Can also be used as an effective Clarifying Shampoo. Ingredients include Tea Tree Oil, Lemon Myrtle Oil, Rosemary Oil and Peppermint Oil



## NURTURING SHAMPOO

A Shampoo designed to nourish and care for coat. The ingredients have been selected to strengthen and protect the coat. Hydrolyzed Rice Protein was selected to help prevent damage and nourish the coat while Keratin Amino Acids assist in improving the condition of the coat and providing shine. Can be diluted together with the other shampoo's in the Fraser Essentials range such as our Coloured Shampoo range.



# SHAMPOO

**FRASER ESSENTIALS SHAMPOO PRODUCTS ARE CONCENTRATED AND DESIGNED TO BE DILUTED. WE SUGGEST A STARTING DILUTION RATE OF 1 PART SHAMPOO TO 30 PARTS WATER. SHAMPOO PRODUCTS CAN BE DILUTED TOGETHER WITH THE OTHER SHAMPOOS IN THE FRASER ESSENTIALS RANGE. AVAILABLE IN 250ML AND 1 LITRE PUMP BOTTLES**



## FLAKY SHAMPOO

A gentle shampoo formulated to cleanse while caring for dry skin and those dogs that exhibit flakiness through the coat.

Ingredients include Pro Vitamin B5 which not only conditions the coat but also helps improve the health of the skin reducing the effects that create flakiness.

## GENTLE SHAMPOO

A gentle shampoo formulated for puppies and dogs with sensitive or irritated skin. No artificial colours or fragrances added.

Only the gentlest of ingredients have been used which include Aloe Vera, Avocado, Safflower, Sunflower and Rosehip Oils.

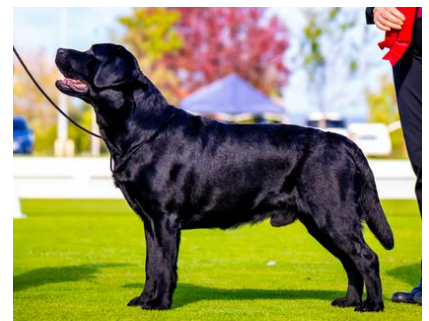


## CLASSIC WHITE DRY SHAMPOO POWDER

A Dry Shampoo Powder specifically designed to use for those little accidents or between bathing.

To use sprinkle into the hand and work through the coat starting from the roots and working outward. Follow with a good brush or a blow out with a hairdryer.

Take care to avoid contact with eyes or other sensitive areas. Infused with Lavender Essential Oils



# COLOURED SHAMPOO'S

**FRASER ESSENTIALS SHAMPOO PRODUCTS ARE CONCENTRATED AND DESIGNED TO BE DILUTED. WE SUGGEST A STARTING DILUTION RATE OF 1 PART SHAMPOO TO 30 PARTS WATER. SHAMPOO PRODUCTS CAN BE DILUTED TOGETHER WITH THE OTHER SHAMPOOS IN THE FRASER ESSENTIALS RANGE. AVAILABLE IN 250ML AND 1 LITRE PUMP BOTTLES**



## CLASSIC WHITE SHAMPOO

A shampoo specifically designed for white, silver or light coloured dogs. Formulated with a nourishing base to alleviate the dryness that most whitening shampoos cause. We are proud that the Fraser Essentials Classic White Shampoo is known as one of the best currently available. Ingredients include Hydrolyzed Rice Protein, Keratin Amino Acids, Green Tea Leaf Extract, Grapeseed Extract, Zizphys Fruit Extract, Horsetail Extract.

## CLASSIC BLACK SHAMPOO

A shampoo specifically designed for Black or Dark Coloured dogs. Formulated with a nourishing base to alleviate the dryness that most coloured shampoo's cause. Aniseed Essential Oil was selected as an ingredient to assist in restoring damaged coats, it is also known to stimulate new growth. Ingredients include - Keratin Amino Acids, Grapeseed Extract, Horsetail Extract, Star Aniseed Essential Oil.



## CLASSIC CHOCOLATE SHAMPOO

A shampoo specifically designed for Chocolate or Brown shaded coloured dogs. Formulated with a nourishing base to alleviate the dryness that most coloured shampoo's case. Theobroma Cacao Essential Oil was selected as an ingredient for its well known moisturising and strengthening properties. Ingredients Include Keratin Amino Acids, Grapeseed Extract Zizphys Fruit Extract, Horsetail Extract and Theobroma Cacao Essential Oil.

## CLASSIC RED SHAMPOO

A shampoo specifically designed for red and gold coloured/shaded dogs. Formulated with a nourishing base to alleviate the dryness that most coloured shampoo's cause. Mandarin Essential Oil was selected as an ingredient to promote shine and brighten the dullest of coats. It is also known to increase blood circulation to the skin leading to healthier coats and increased growth. Ingredients include: Hydrolyzed Rice Protein, Grapeseed Extract, Horsetail Extract and Mandarin Essential Oil.



## TIPS & TRICKS -

*Fraser Essentials Coloured Shampoo's can be combined to create the colour shade of your choosing*



# *The Winning Combination*

- COAT STIMULANT SHAMPOO
- SHINE BRIGHT CONDITIONER
- COAT STIMULANT SPRAY



*Fraser Essentials is the product of choice for top show exhibitors around the world.*

# CONDITIONERS

Scan for more  
information



**A CONCENTRATED PRODUCT DESIGNED TO BE DILUTED. WE SUGGEST A STARTING DILUTION RATE OF 1 PART CONDITIONER TO 30 PARTS WATER. CAN BE DILUTED TOGETHER WITH THE OTHER CONDITIONERS IN THE FRASER ESSENTIALS RANGE. AVAILABLE IN 250ML AND 1 LITRE PUMP BOTTLES**



## INTENSIVE CARE CONDITIONER

A Conditioner specifically formulated for dogs that are experiencing a dry and brittle coat and that require a rich extra moisturising component. Also suitable for dogs that require a heavier conditioner and for maintenance bathing. The ideal maintenance conditioner for wrapped breeds. Ingredients Include: Shea Butter, Jojoba Oil, Peppermint, Cedarwood, Rosemary Essential Oils and Buriti Oil.



## GENTLE CONDITIONER

A Gentle Conditioner formulated for puppies and dogs with sensitive or irritated skin. No artificial colours or fragrances added. Only the gentlest of ingredients have been used which include Shea Butter, Natural Vitamin E, Sunflower, Jojoba, Rosehip, Ylang Ylang, Lime Cold Pressed, Rosemary and Soya Bean Oils.



## CLASSIC WHITE CONDITIONER

The conditioner that will help give whites that added sparkle. This Conditioner is best used in combination and diluted with other conditioners in the Fraser Essentials range. Infused with Lavender Essential Oil



# CONDITIONERS

**A CONCENTRATED PRODUCT DESIGNED TO BE DILUTED. WE SUGGEST A STARTING DILUTION RATE OF 1 PART CONDITIONER TO 30 PARTS WATER. CAN BE DILUTED TOGETHER WITH THE OTHER CONDITIONERS IN THE FRASER ESSENTIALS RANGE. AVAILABLE IN 250ML AND 1 LITRE PUMP BOTTLES**



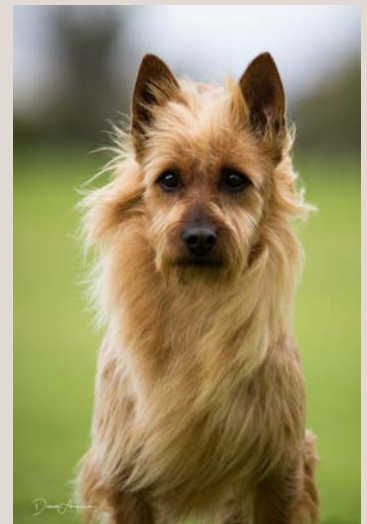
## SHINE BRIGHT CONDITIONER

The only product you will need to bring shine to a dull, lifeless coat. The perfect show bath Conditioner! A light, mild conditioner designed for dull, lifeless coats that require added shine. Lime Cold Pressed Essential Oil assists in providing not only a fresh scent but assists in adding vitality to the coat. The perfect product for a wide variety of coat types.



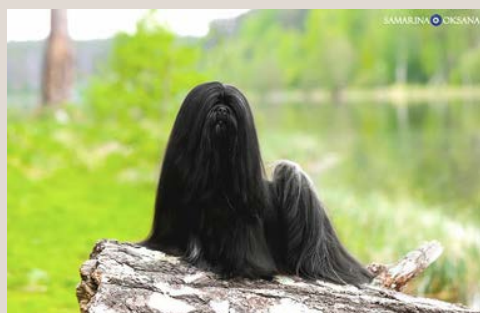
## PROTECTING CONDITIONER

A Conditioner specifically designed to condition while protecting the coat from colour fading and the effects from blow drying or straightening irons. The Ingredients have been selected to strengthen and protect the coat. UV absorbing compounds are also included which help protect from sun damage. Keratin Amino Acids has been selected as an ingredient to assist in improving the condition of the coat and providing shine.



## SQUEAKY CLEAN CONDITIONER

This high quality Conditioner is a good all round conditioner that will add moisture to a variety of coat types. It is a mild product that is designed for light to medium conditioning while increasing natural shine and strengthening of the coat. Ingredients include Neem Oil, Henna and Walnut Extract.



# THE BIG VOLUMISING RANGE

*Using Ingredients backed by scientific research*

When developing the Big Volumising range we decided that it shouldn't be just about increasing volume, it should be about strengthening and improving coat condition too!! It can be common when owners are looking for volume that the coat may not be in good condition and/or suffering from lack of coat or breakage. The BIG Volumising range includes actives that were selected to penetrate the hair shaft to increase moisture and build strength from within, whilst also reinforcing and protecting the surface of each hair. The properties combine to strengthen and help reduce the degree of damage to coat which reduces the amount of breakage. And backed with research!



**Without Volumising Active**

**The Research**

**With Volumising Active**



**Strengthening Active**



## BIG VOLUMISING SHAMPOO



Ingredients Include Almond Oil, Hydrolyzed Wheat Protein, Hydrolyzed Vegetable Protein, Ylang Ylang Essential Oil

## BIG VOLUMISING CONDITIONER



Ingredients Include Almond Oil, Hydrolyzed Wheat Protein, Hydrolyzed Vegetable Protein, Babassu Oil, Ylang Ylang Essential Oil

## BIG VOLUMISING SPRAY



Ingredients Include Almond Oil, Hydrolyzed Wheat Protein, Hydrolyzed Vegetable Protein, Ylang Ylang Essential Oil

## THE MUST HAVE COAT MAINTENANCE PRODUCT

With Panthenol, Vitamin E and Coconut, Almond, Macadamia, Peach, Soya Bean & Bisabolol Oils

A clear, light, fragrance free oil that has been formulated to protect and moisturise the coat and skin. High Quality ingredients assist in keeping coats in top condition by penetrating skin and coat to nourish while increasing elasticity and strength. Ingredients to help protect the coat from UVA and UVB light have also been included. This is a must try product for those dogs going through a coat change or those that experiences on-going matting.

Can be used undiluted directly to the coat after bathing, when wrapping coats or diluted in the final bathing rinse. It can be used on both wet and dry coats. This is a leave in maintenance type product.

Available in a 125ml and 250ml ready to use spray bottle.



"A big thank you for having a coat oil. By not having to brush during the week, which might break hair, and being able to oil and leave until the next bath I am sure Pete has grown ear fringe length" – Ian Rasmussen



PROTECTING COAT OIL

# FINISHING PRODUCTS

## SPARKLE SPRAY

The ideal spray to give your dog that added sparkle, shine and a fabulous smell. Spray onto hands, lightly rub the hands together and run through or over the dogs coat before heading into the show ring. Provides shine and lustre. Shake well before use. Packaged in a ready to use 125ml spray bottle  
Ingredients include: Pink Grapefruit Oil, Bergamot Oil, Vanilla Bean Extract, Olive Oil, Aloe Vera Leaf Juice Powder, Natural Vitamin E, Calendula Flower Extract, Tagetes Erecta Flower Extract, Soya Bean Oil.



## CLASSIC WHITE CHALK POWDER

The Fraser Essentials Classic White Chalk Powder, whitens whites and covers discoloured areas. Infused with Lavender Essential Oil to give a fresh fragrance. This fine powder product gives texture and builds body and substance while giving a natural feel. The Chalk Powder adheres well to the coat without giving a bulky heavy look.  
Apply using a soft bristle brush. Does not contain bleach or bleaching agents. Packaged in a 300g reusable zip lock stand up pouch.



## MAGIC CHALK

Goes on as a cream but dries like a Chalk Powder.  
Magic Chalk is the product to highlight white markings or cover those little imperfections without leaving a greasy or oily finish.  
Apply a little at a time, with this product less is better. When dry if more coverage is needed apply a second layer.  
Avoid contact with eyes.

### TIPS & TRICKS

*Scan the QR Code to see how to use Magic Chalk*



## CLASSIC WHITE CHALK BLOCK

The Fraser Essentials Classic White Chalk Block is soft and makes applying chalk to larger areas easy, while providing excellent coverage.  
Apply to white areas to make your whites even whiter or to cover areas which are discoloured, while giving a natural look and feel.  
The blocks can be easily broken in half to use on smaller areas.  
Does not contain bleach or bleaching agents.  
Available in a single pack or a twin (2) pack. Blocks are 9cm x 9cm in size.



### TIPS & TRICKS -

*Using Fraser Essentials Classic White Chalk Powder to Chalk legs  
Scan now to watch Video*

# COMBS & TOOLS

## THE HERITAGE COLLECTION



### HERITAGE COMB – SMALL & LARGE

The 25mm Stainless Steel teeth ensure the comb will get to the root of the hair. While the wider handle ensures easier use than traditional spine combs, especially for those groomers with hand/finger issues such as arthritis.

The combination of 2mm and 4mm tooth spacing make it a multi-functional comb for both grooming and as a finishing comb

Measures – Small – 5cm wide x 14cm long (2 in wide x 5 1/2 in long)

Large – 5.5cm wide x 18cm long (2 1/4 in wide x 7 1/4 in long)



### HERITAGE TAIL COMB

Fraser Essentials “The Heritage Tail Comb” is the ideal comb where a small fine toothed comb is required. Ideal for face or feet grooming.

The Stainless Steel teeth with rounded ends ensure the comb glides through the coat and is both kind to coat and skin

Measures – 3cm wide x 20cm long (1 1/4 in wide x 8in long)



### HERITAGE SLICKER BRUSH

Fraser Essentials “The Heritage Slicker” is the ideal brush for dogs with thicker coats and to fluff dry and style.

The long angled pins are able to get through the thickest of coats and assist in detangling. A soft cushion provides a gentle yet thorough groom for the dog.

The angled head provides ease of use for the user while a moulded handle fits well into the hand.



### HERITAGE RAKE

Fraser Essentials The Heritage Rake assists in removing undercoat. The rounded 2.5cm Stainless Steel pins glide through the coat removing dead and excess undercoat.

The moulded non slip handle helps when using the rake with wet hands.

An essential tool for double coated dogs when changing coat.



# BRUSHES & COMBS



## LIGHTWEIGHT PIN BRUSH

Are you finding that so many Pin Brushes are getting sooooo heavy? Us too!!! We are thrilled to introduce our Lightweight Pin Brush. Light but not flimsy in anyway. 11 Rows of 22mm Stainless Steel polished pins with rounded ends are embedded into a well anchored cushion base. The unique anchoring of pins ensures that pins are not easily pushed through the cushion or fall out. The grooming pad is finished in a quality Beechwood handle that sits comfortably in the hand. This brush glides through the coat with ease without damaging even the most delicate of coats.

## LIGHTWEIGHT OBLONG PIN BRUSH

Fraser Essentials Oblong Pin Brush is the ideal tool for medium to long coated breeds. The size is perfect for small to medium sized dogs and the smaller areas where it can be more difficult to use a larger brush. The soft cushion and rounded 22mm Stainless Steel pins slide through the coat with ease without damaging even the most delicate of coats. Pins are embedded securely into a well anchored cushion, designed to ensure that pins will not push in. The grooming pad is finished in a quality beechwood handle that sits comfortably in the hand. The lightweight nature of the brush will help prevent groomer fatigue for those that spend long periods of time drying and/or grooming.



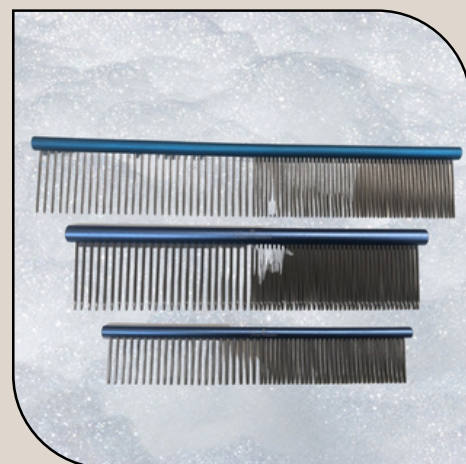
## MINI PIN BRUSH

The perfect little brush for the ring. Small enough to put in a pocket, big enough to be effective. The Rounded 17mm Steel pins are embedded securely into a well anchored cushion. The pad is finished in a quality wooden handle. Length 11.5cm long x 3.5cm wide.

## ESSENTIAL COMBS – SMALL, MEDIUM & LARGE

Fraser Essentials Large Essential comb is a multi-use tool for every dog groomer or owner. The 35mm steel teeth ensure the comb will get to the root of the hair. The combination of 2mm and 4mm tooth spacing make it a multi-functional comb for both grooming and when finishing. While the steel teeth with rounded ends ensure the comb glides through the coat and is both kind to coat and skin.

Large – 4.5cm wide x 25cm long (1 3/4 in wide x 9 7/8 in long)  
Medium – 4.5cm wide x 20cm long (1 3/4 in wide x 7 7/8 in long)  
Small – 2.8cm wide x 16.5cm long (1 1/8 in wide x 6 1/2 in long)





# HANDMADE BRISTLE BRUSHES

Handmade by European craftsmen with a 100 year family history of making quality brushes.



## OVAL BOAR BRISTLE BRUSH

Fraser Essentials Oval Boar Bristle Brush is the ideal tool to smooth the coat and create a beautiful natural shine. The Brush is suitable for short coated dogs or finishing long coats. Our Boar brushes consist of stiff natural boar bristle drilled into a quality wooden handle which sits comfortably in the hand.



## OBLONG BOAR BRISTLE BRUSH

Fraser Essentials Oblong Boar Bristle Brush is the ideal tool to smooth the coat and create a beautiful natural shine. The Brush is suitable for short coated dogs or finishing long coats. The Oblong shape is ideal for smaller areas where a larger brush is more difficult to use. Our Boar Brushes consists of stiff natural boar bristle drilled into a quality wooden handle which sits comfortably in the hand.



### TIPS & TRICKS -

*Having problems getting the coat to lay even and flat,? This may help  
Scan now to watch Video*



## OVAL PIG BRISTLE BRUSH

Fraser Essentials Pig Bristle Brush is the ideal tool to smooth the coat and create a beautiful natural shine. The Brush is suitable for short coated dogs or finishing the most delicate and fragile of long coats. Our Pig Bristle Brushes consist of a softer natural bristle drilled into a quality wooden handle which sits comfortably in the hand.



## GOAT HAIR BRUSH

Fraser Essentials Goat Hair Brush is the ideal tool for applying chalks and powders. Our Goat Hair Brushes consist of soft natural bristle drilled into a quality wooden handle which sits comfortably in the hand.

### TIPS & TRICKS -

*Selecting the right Bristle Brush  
Scan now to watch Video*





## GOLDEN GEL

Apply Gel twice daily to areas such as calloused elbows and tails, hot spots, clipper burn and other skin conditions to assist in moisturising, healing and promoting coat growth.

Ingredients include Aloe Vera, Calendula, Vitamin E, Rosemary and Geranium Essential Oils.



Scan for more information

## PARFUM'S

A true parfum that will take the pampered pooch from casual day outings to inside on the couch. This parfum is alcohol free making it kind on both coat and skin and without having a drying effect on coat. Spray 2 to 3 Spritzes on the coat taking care to avoid eye and other sensitive areas.



Parfum for Her No 1 – This feminine fragrance is fruity with floral notes, opening with strawberries, blackberries and musk but with distinctive rose heart notes. Notes – Top: Strawberry, Blackberry, Musk Middle: Rose, Rose Peony Base: Amber, Cashmere, Wood, Sugar

Parfum for Him No 2 – A modern alternative to traditional scents. A Majestic combination of vanilla, musk and amber, with tangerine and orange blossom top notes for the sophisticated male in your life. Notes – Top: Tangerine, Middle: Jasmine, Orange Blossom Base: Vanilla, Leather, Musk Patchouli, Amber

Parfum for Her No 3 – A vibrant parfum with Orange Blossom and Pink Pepper opening notes with the warmth of jasmine and coffee. Base notes of Vanilla and Patchouli make this a very special fragrance for the energetic, sporty, adventurous girl in your life. Notes – Top: Pink Pepper, Orange Blossom, Pear Middle: Coffee, Jasmine, Almond, Liquorice Base: Vanilla, Patchouli, Cedar, Cashmere, Wood

Parfum for Him No 4 – This earthy, woody fragrance with small hints of citrus and floral make this the ideal scent for the bold and outgoing man about town. Notes – Top: Rosemary, Carum Carvi, Fruity Basil, Bergamot, Lemon Middle: Coriander, Carnation, Sandalwood, Patchouli, Orris Root, Jasmine, Rose Base: Amber, Musk, Oak moss, Vetiver, Grass

Parfum for Her No 5 – This extensive blend of fruity, floral and warm notes make a rich scent for the sophisticated lady of the house. Notes – Top: Bergamot, Lemon, Verbena, Carum Carvi, Pink Pepper, Violet Middle: Pepper, Myristica, Flower-de-luce, Geranium Wilfordii, Rose, Happy Sage Base: Myrrh, Amber, Patchouli, Vetiver, Grass, Civet, Vanilla, Benzoin, Leather




## FINE MIST SPRAY BOTTLE

Designed with convenience and elegance in mind, this sleek spray bottle is branded with the Fraser Essentials logo.

The 250ml capacity provides ample space for water or your favorite Fraser Essentials Spray product.

The fine mist nozzle disperses the product evenly, preventing wastage and providing an even application. Unlike many mist sprayers which have a large trigger spray mechanism this bottle has a smaller pump spray which means a perfect fit for tack boxes, bags and at ringside.

# WHAT PRODUCTS TO USE

		Coat Stimulant Shampoo	Squeaky Clean Shampoo	Flaky Shampoo	Gentle Shampoo	Classic White Shampoo	Classic Black Shampoo	Classic Chocolate Shampoo	Classic Red Shampoo	Nurturing Shampoo	Dry Classic Shampoo Powder	Shine Bright Conditioner	Squeaky Clean Shampoo	Gentle Conditioner	Protecting Conditioner	Intensive Care Conditioner	Classic White Conditioner	Brushing Spray	Coat Stimulant Spray	Melt Matts Away	Sparkle Spray	BIG Volumising Range	Protecting Coat Oil	
Draping Coats																								
Spitz Breeds																								
Wire Haired Breeds																								
Short Coats																								
Poodle Coats																								
Puppies																								
Irritated Skin																								
Itchy Skin																								
Flaky Coats																								
Coat Growth																								
Sun Damaged Coats																								
Clarifying Coats																								
Static Control																								
White Dogs																								
Black Dogs																								
White Dogs																								
Black Dogs																								
Brown/Chocolate Dogs																								
Red Dogs																								
Coat Change/Mating																								
Wrapping Coats																								
For use as a Clarifying Shampoo use undiluted																								

Please note that these recommendations are a general guide only. If you have other coat problems/issues that you wish to address, we may recommend other products within the Fraser Essential range.

We may also recommend different products for maintenance bathing compared to that for a show finish.

## TIPS & TRICKS -

*How to Dilute Product*

*Scan now to watch Video*





# Happy Grooming!

The range of Fraser Essentials products are available around the world from our wonderful team of Stockists. To find your closest stockist, visit our website or scan the QR Code below.



*Stockist  
Listing*

Email – [enquiries@fraseressentials.com](mailto:enquiries@fraseressentials.com)

Social Media – [@fraseressentials](https://www.instagram.com/fraseressentials)

Website – [www.fraseressentials.com](http://www.fraseressentials.com)

or scan the QR Code

*Website*

