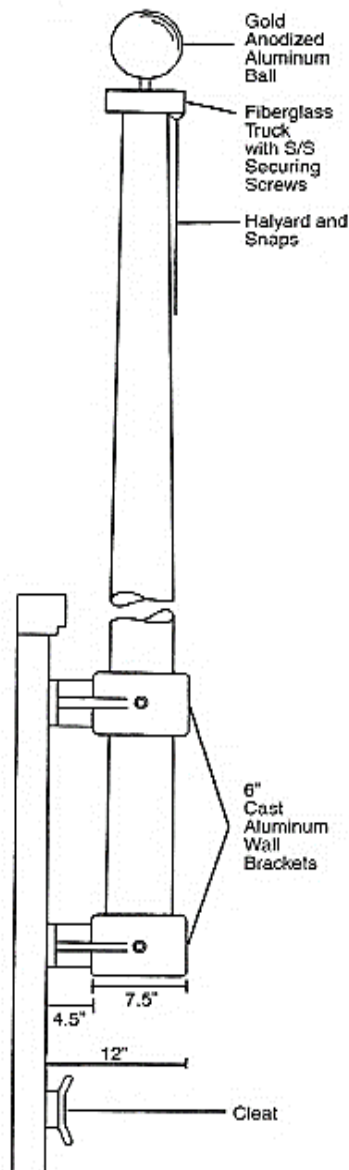
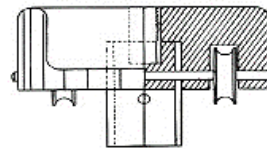




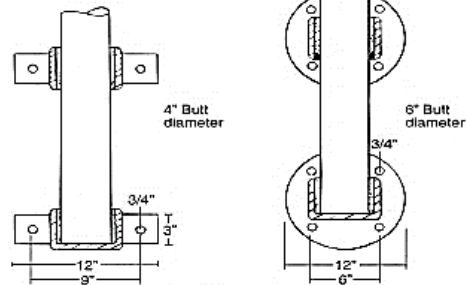
Aeolus Series Vertical Wall Mount V15-V30



Fiberglass Stationary External Truck



Cast Aluminum Wall Brackets



Wall brackets match pole size specified. Brackets are painted the same color as the pole. Wall bolts are not included.

Specifications and Accessories

	V 15	V 20	V 25	V30
Above Ground Height	V 15	V 20	V 25	V30
Overall Height	15'	20'	25'	30'
Butt Diameter	4"	4"	6"	6"
Top Diameter	2.75"	2.75"	3"	3"
Gold Anodized Ball	5"	5"	6"	6"
Truck	F/G	F/G	F/G	F/G
Nylon Cleat	8.5"	8.5"	8.5"	8.5"
Polyester Halyard	#10	#10	#10	#10
Snap Hooks	Brass	Brass	Brass	Brass
Pole Weight (lbs.)	27	36	44	61
Shipping Weight (lbs.)	63	75	106	129
Bracket	4" Alum	4" Alum	6" Alum	6" Alum
Standard Flag Size	4'x6'	4'x6'	5'x8'	5'x8'

Specifications

Provide a Fiberglass Reinforced Composite (FRC) Vertical Wall Mount Flagpole Model #V15 as manufactured by PLP Composites, Fitzwilliam, NH 03447.

The flagpole shall have an overall length of 15'. The butt diameter shall be 4" and the top diameter 2.75". The pole weight shall be approximately 27 lbs. and a total shipping weight of 63 lbs.

The flagpole shall be manufactured of fiberglass woven roving and polyester resin with 75% of the reinforcing fibers oriented in the axial plane for maximum stiffness and 25% in the radial plane for required hoop strength. Load calculations shall be based on AASHTO and NAAMM standards with the pole designed with a two to one (2:1) safety factor for 125 mph winds, unflagged, with a 1.3 gust factor.

The flagpole shall have an Entasis taper and shall be void of vertical mold seams.

The flagpole shall be sanded smooth and coated with a high gloss Aliphatic Polyurea coating system which provides extended UV protection and weatherability.

The color of the flagpole shall be:

Standard: white, bronze, black or other, as specified _____ (select one)

The flagpole shall be equipped with PLP standard fittings:

- A 5" gold anodized aluminum ball
- #10 (5/16") polyester halyard
- 8.5" nylon cleat
- brass snap hooks with vinyl covers
- External stationary double sheave fiberglass truck with self-securing screws
- 4" aluminum wall brackets

Note: Mounting bolts for wall brackets are not provided

Exceptions:

Project: _____

Location: _____

Date: _____

PLP Composites

57 Creamery Road - PO Box 429, Fitzwilliam, NH 03447 - Phone: 800-262-6075 - www.plpcomp.com - info@plpcomp.com