



NS-QT25

TWEETER SYSTEM

User Manual

www.nakamichicaraudio.com

PRODUCT INFORMATION

Specifications	NS-QT25
RMS.Power(W)	20
Nominal Impedance(Ω)	4
Sensitivity@1w/1m(dB)	89
Frequency Range	800Hz ~ 20KHz
Voice Coil	ASV 25mm
Magnet Mass(Oz)	102
Mounting Depth(mm)	30
Mounting Diameter(mm)	42

WHAT'S IN THE BOX

Check and identify the contents of your package:

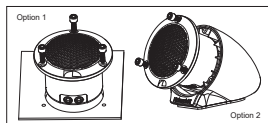
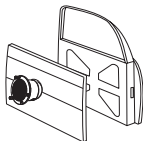
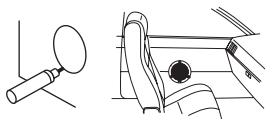
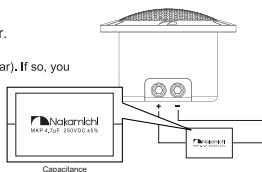
1. Installation Manual (x1);
2. Tweeter (x2);
3. Tweeter's Back Cover (x2);
4. Capacitance (x2);
5. 2.5mm "L" Type Wrench (x1);
6. Mounting Screw M3x10mm (x6);

INSTALLATION

MOUNT ON DOOR (FRONT OR REAR)

You can mount the tweeter on the front/rear door or rear tray of your car.

- ★ Make sure that nothing obstructs around the mounting location of the door.
- ★ A hole for mounting may already be cut out of the inner panel of the door(front or rear). If so, you need to modify the board only.
- ★ Ensure that the tweeter do not interfere with any inner parts (such as the window), etc. Also ensure that the tweeter does not touch any inner fittings, such as the window cranks, door handles, arm rests etc.
- ★ Turn off the car ignition key (If the power is on, the click noise generated by the connection may damage the speakers).
- ★ One standard capacitance should be connected with tweeter's positive terminal.



IMPORTANT

Read and understand all instructions before you use the apparatus. If damage is caused by failure to follow instructions, the warranty does not apply.

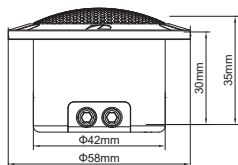
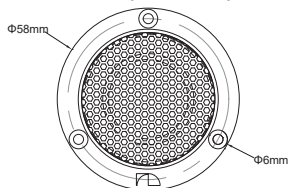
Use only the supplied mounting hardware for a safe and secure installation.

Do not continuously use the speaker system beyond the peak power handling capacity.

Keep credit cards, watches, recorded tapes etc. with magnetic coding away from the speaker system to prevent damage caused by the magnets in the speakers.

Clean the apparatus with soft, damp cloth. Never use substances such as alcohol, chemicals or household cleaners on the apparatus.

DIMENSIONS (UNIT:MM)





NS-QT25

高音揚聲器

使用說明書

www.nakamichicaraudio.com

产品信息

性能	NS-QT25
額定功率(W)	20
阻抗(Ω)	4
靈敏度@1w/1m(dB)	89
頻率響應	800Hz ~ 20KHz
音圈規格	ASV 25mm
磁鐵質量(Oz)	102
安裝深度(mm)	30
安裝直徑(mm)	42

包裝內物品

檢查並識別包裝中的物品:

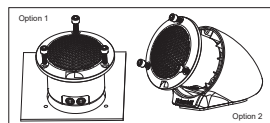
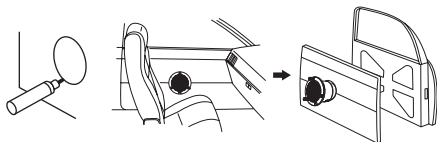
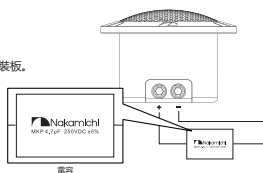
1. 安裝手冊 (x1);
2. 高音揚聲器 (x2);
3. 高音后罩 (x2);
4. 電容 (x2);
5. 2.5mm "L" 型扳手 (x1);
6. 螺絲 M3x10mm (x6);

安裝

方案1: 安裝在車門上 (前車門或後車門)

您可將高音安裝在汽車的前/後車門上

- ★ 確保車門上的按轉為周圍沒有任何障礙物
- ★ 車門 (前車門或後車門) 的內側面板可能已經切割好安裝孔。在此情況下, 只需修改安裝板。
- ★ 確保高音終端不會妨礙到任何內部零件, 如車門上的車窗系統 (不會妨礙打開或關閉車窗)。同時還要確保揚聲器格柵不會碰觸到任何內部配件, 如車窗搖柄、車門把手、扶手等。
- ★ 關閉汽車的点火鑰匙 (如果電源為接通狀態, 則電源連接所產生的震動聲可能會對揚聲器造成損壞)。
- ★ 在使用時, 高音正極須連接標配的電容。



重要信息

使用本裝置之前, 請仔細閱讀並理解所有相關說明。如果由于未遵循說明而造成損害, 則將不能享受保修。只能使用隨附的安裝硬件, 以確保安裝安全穩固。

切勿在超出峰值功率處理能力的情況下持續使用該揚聲器系統。

信用卡、手錶、錄音磁帶等具有磁性編碼的物件應遠離該揚聲器系統, 以免揚聲器內部的磁鐵帶來損壞。

用柔軟的濕布清潔本裝置。切勿使用酒精、化學品或家用清潔劑等物質清潔本裝置。

尺寸 (單位: 毫米)

