



NKSA60.4

4-channel Power Amplifier

User Manual

www.nakamichicaraudio.com

CONTENTS

INTRODUCTION -----	3 EN
ACCESSORY LIST -----	3 EN
SPECIFICATIONS -----	3 EN
DIMENSIONS -----	4 EN
POWER CONNECTION LEADS -----	5 EN
Notes on the power supply	
Power connection leads	
System 2: 3 channel mode	
System 3: 2 channel mode	
TROUBLESHOOTING -----	9 EN

INTRODUCTION

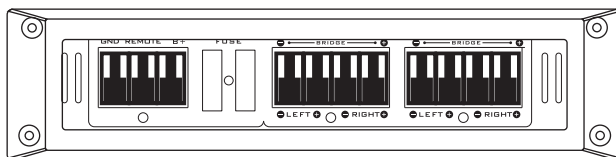
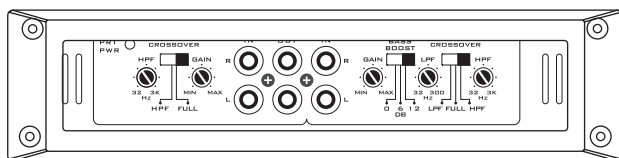
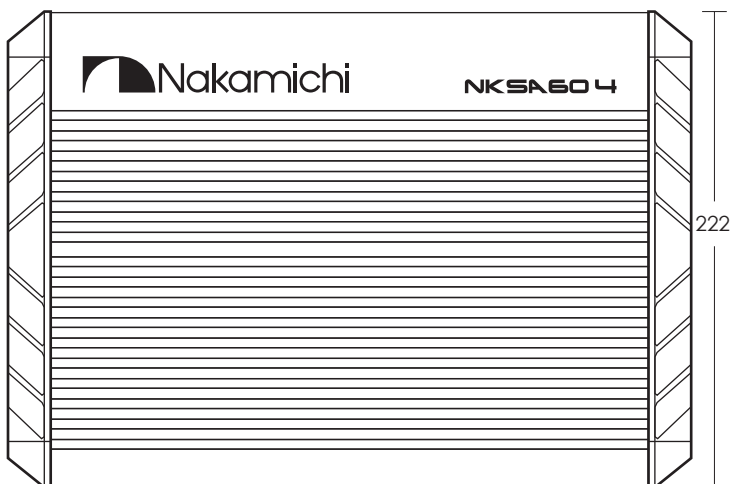
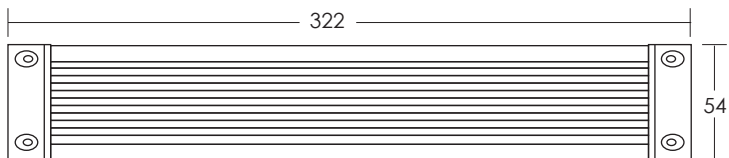
Thank you for your purchase, and welcome to Nakamichi! In order to enjoy the better service from us, please keep your original invoice well and complete. You'd better post the copy of back to the appointed service agent of Nakamichi so that you may get more technical support.

ACCESSORY LIST

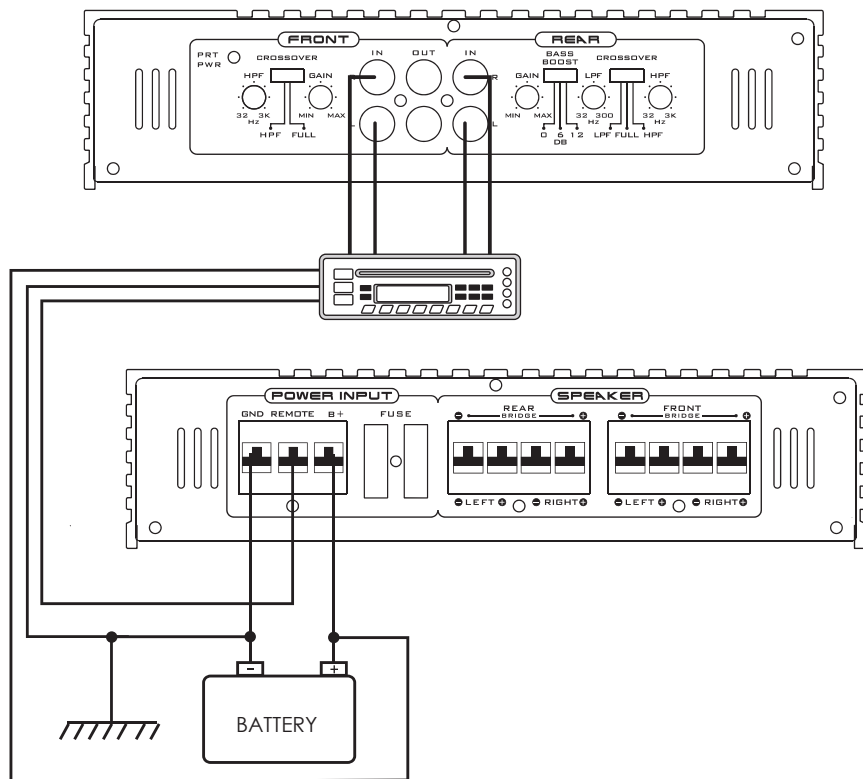
1. User Manual	1pc
2. Amplifier	1pc
3. Mounting Screw	4pcs
4. Fuse(20A)	2pcs

SPECIFICATIONS

N-power Output @ 4 Ohm	60W x 4
N-power Output @ 2 Ohm	120W x 2 (bridged)
T.H.D.	<0.1%
Frequency Response	20HZ - 20kHz
Signal To Noise Ratio	>90dB
Sensitivity	0.15V - 8V
Fuse Size	20A x 2
Unit Dimensions (L x H x W)	322 x 222 x 54 mm
Net Weight	Approx. 2.5 kg
Box Dimensions (L x H x W)	365 x 260 x 88 mm
Gross Weight	Approx. 2.8 kg

DIMENSINOS (UNIT:MM)


POWER CONNECTION LEADS



Notes on the power supply

Connect the +12V power input lead only after all other leads have been connected. Be sure to connect the ground wire of the unit securely to a metal part of the car. A loose connection may cause a malfunction of the amplifier.

REMOTE: The unit is turned on by applying +12Volts to this terminal. This terminal does not draw heavy current like the two power terminal so a thinner connecting wire is acceptable. Standard 18 GAUGE is fine and the standard colour is yellow. If the radio is equipped with a power antenna control wire, it can drive this terminal. If the power antenna wire is already in use, you can still splice into it. With this method, the unit will turn on automatically with

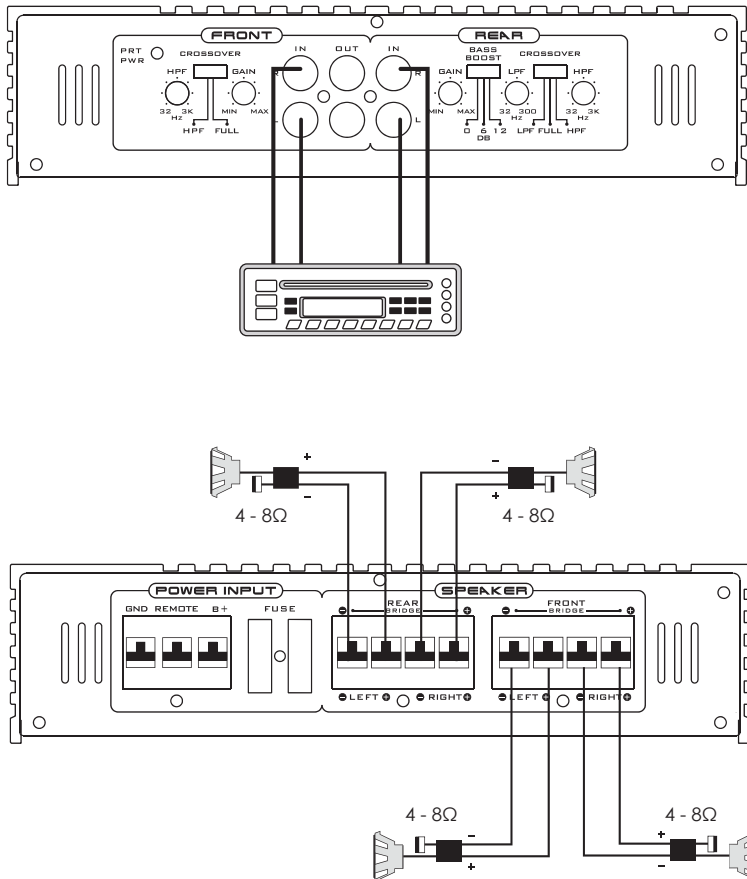
the radio. Use the power supply lead with a fuse attached whose value is the same as original fuse.

Place the fuse in the power supply lead as close as possible to the car battery.

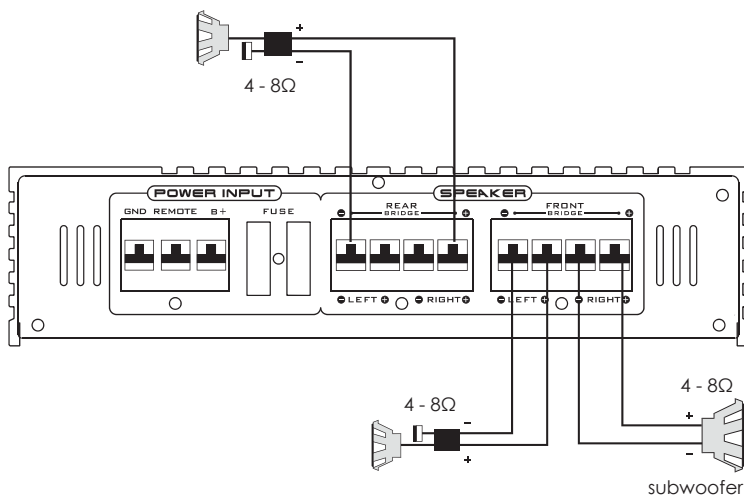
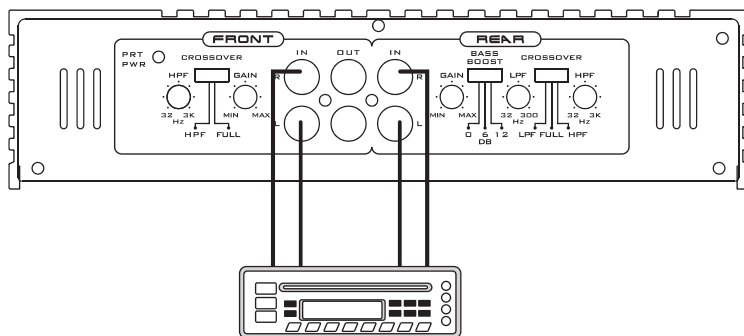
During a full power operation, Maximum current will run through the system.

Therefore. Make sure the that the leads to be connected to the +12V and GND terminals of the unit respectively must be larger than 8-Gauge (AWG.8).

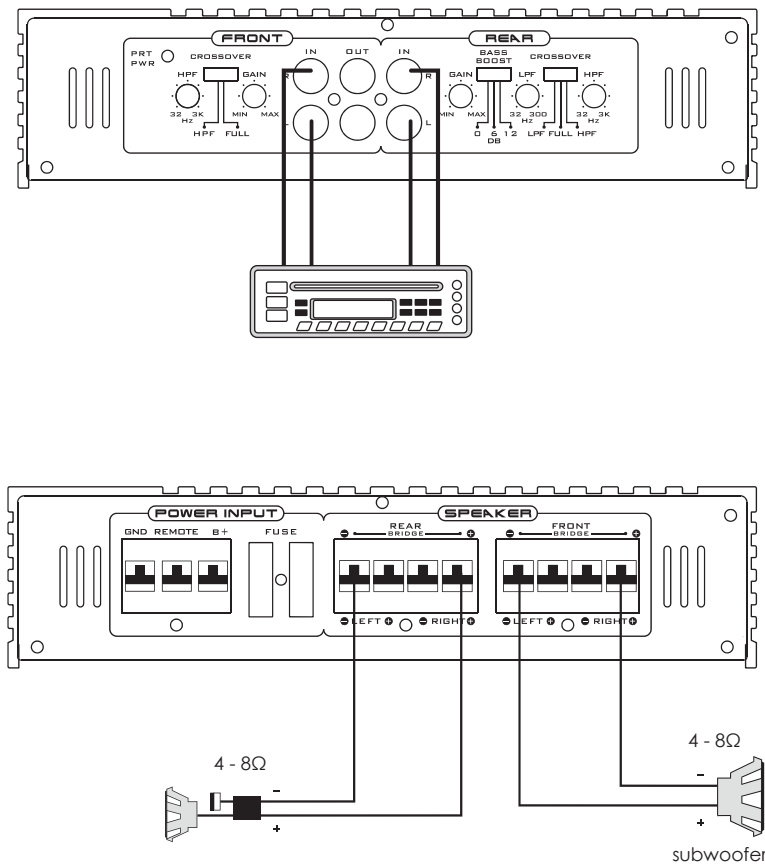
Power Connection Leads



System 2: 3 channel mode



System 3: 2 channel mode



TROUBLESHOOTING

Symptom	Possible Cause	Action To Take
no output	low or no remote turn-on input	check remote turn-on voltage output at amplifier and correct as needed
	fuse blown	check power wire integrity and reversed polarity, repair as needed and replace fuse
	power wires not connected	check power wire and ground connections and repair or replace as needed
	audio input not connected or no output from source	check input connections and signal integrity, repair or replace as needed
	speaker wires not connected	check speaker wires and repair or replace as needed
audio cycles on and off	speakers are blown	check system with known working speaker and repair or replace speakers as needed
	thermal protection engages when amplifier heat sink temperature exceeds 90°C	make sure there is proper ventilation for amplifier and improve ventilation as needed
	loose or poor audio input	check input connections and repair or replace as needed
distorted output	amplifier level sensitivity set too high; exceeding maximum output capability of amplifier	reset gain referring to the tuning section of the manual for detailed instructions
	impedance load to amplifier too low	check speaker impedance load if below 2ohm stereo or 4ohm mono rewire speakers to achieve a higher impedance
	shorted speaker wires	check speaker wire connections and repair or replace as needed
	speaker not connected to amplifier properly	check speaker wiring and repair or replace as needed refer to the installation section of this manual for detailed instructions

TROUBLESHOOTING

Symptom	Possible Cause	Action To Take
distorted output	internal crossover not set properly for speaker	reset crossovers referring to the multi-cross crossover configuration section of this manual
distorted output (cont'd)	speakers are blown	check system with known working speakers and repair or replace as needed
poor bass response	speakers wired wrong polarity causing cancellation at low frequencies	check speaker polarity and repair as needed
	crossover set incorrectly	reset crossovers referring to the multi-cross crossover configuration section of this manual for detailed instructions
distorted output (cont'd)	impedance load to amplifier too low	check speaker impedance load, if below 2ohm stereo or 4ohm mono rewire speakers to achieve a higher impedance
	short in power wire or incorrect power connections	check power and ground connections and repair as needed
	fuse used is smaller than recommended	replace with proper fuse size
	too much current being drawn	check speaker impedance load, if below 2ohm stereo or 4ohm mono rewire speakers to achieve a higher impedance
	short in power wire of incorrect	check power and ground connections and repair as needed



Nakamichi®

www.nakamichicaraudio.com