

The National Time 2M / 2MR series clock mechanisms are economical yet employ worm/worm gear drive technology similar to its bigger cousins providing smooth and continuous advancement of the hands. The standard mechanism is driven by a permanent magnet, 115V 50Hz or 60Hz synchronous gear motor. These mechanisms offer mounting options to suit all applications with dial sizes to 42" diameter. Custom shaft lengths can be provided to meet specific project requirements. Either can be set manually by turning the minute hand without damaging the unit. Access to the hands is required to set the time on the 2M series mechanism while the 2MR series incorporates dual motors and the ability to be reset remotely with multiple reset options.

Features

Dial Sizes to 42"

Illuminated Dial Applications

Through Wall Applications to 10"

Front Mount Applications

Continuous Positive Drive

Worm / Worm Gear Drive

Synchronous Torque Gear Motor

Manufactured in the U.S.A.

Specifications

Input Power: 120VAC specify 50Hz or 60Hz

Watts: 3

Weight: 2.25 lbs. - 1 kg. (Approximate)

Options

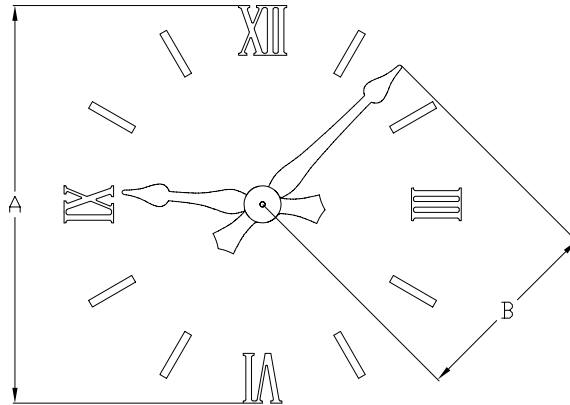
Reset : Manual Switch: 970 Reset Panel
Manual Switch with Pilot Clock: 970-PC
Auto: MC100 Master Clock with
GPS/LAN interface options.

Ordering Information

1. Determine outside diameter of clock dial. This is not the cabinet size or sight opening.

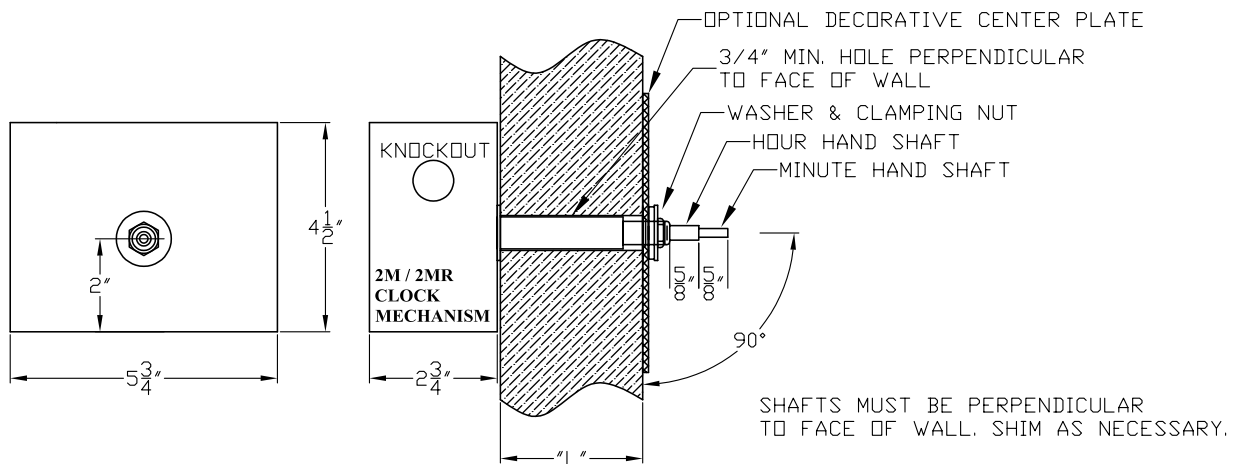
"A" = Dial Diameter

"B" = Minute hand center to tip



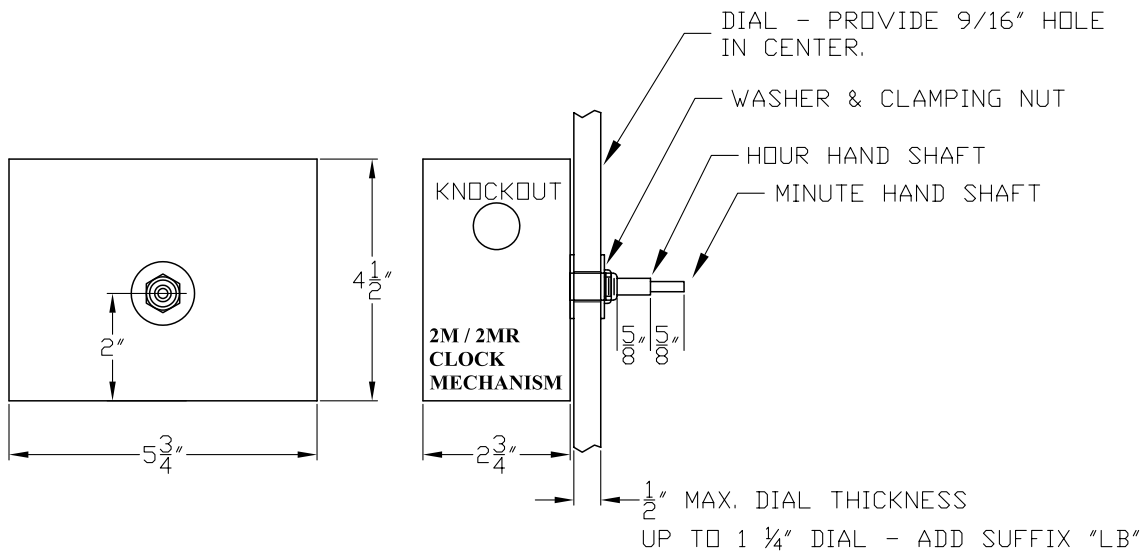
2. Determine the style hand that best matches the dial style or configuration for the project. Custom hand styles can be provided. Consult factory.
3. Determine the length required for the minute hand from center of the dial, to tip of hand that suits your dial style or configuration.
4. Determine dial or wall thickness.

Through Wall Mount



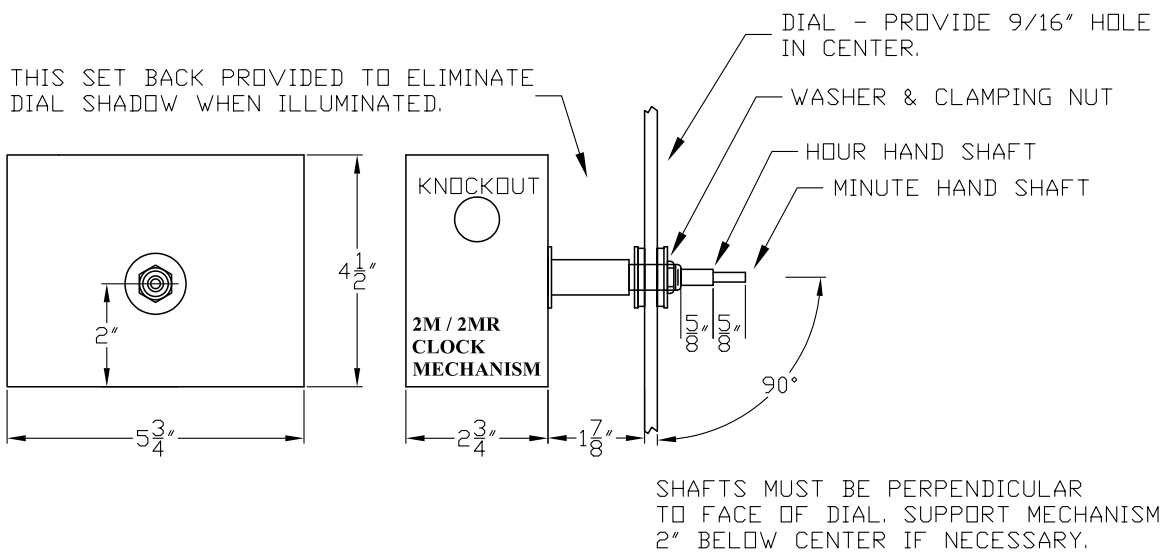
DRWG. 9055A

Standard Mount



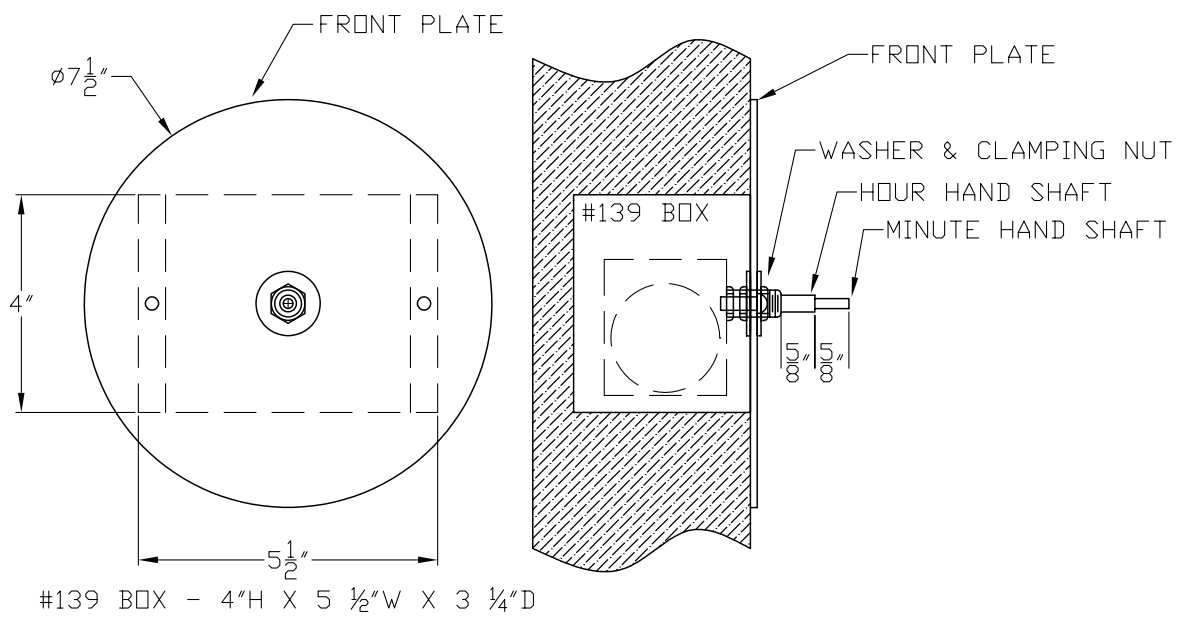
DRWG. 6563A

Illuminated Dial



DRWG. 6453A

Front Mount



DRWG. 9718A