

The National Time 3MR series clock mechanisms employ worm/worm gear drive technology to provide smooth and continuous advancement of the hands. In addition, this technology protects the clock mechanism from nature's harshest elements such as wind shear, snow and ice. The standard mechanism is driven by a permanent magnet, 115V 50Hz or 60Hz synchronous gear motor. The 3MR series mechanisms offer mounting options to suit all applications with dial sizes to 48" diameter. Custom shaft lengths can be provided to meet specific project requirements. Remote manual switch or automatic clock controls are used for resetting the units to the correct time following power outages or daylight savings adjustments. 3MR series mechanisms are compatible for synchronization with the NIST atomic clock when used with the MC100-GPS or MC100-LAN options.

Features

3MR Series Clock Mechanisms

Dial Sizes to 48"

Custom Shaft Lengths

Illuminated Dial Applications

Through Wall Applications to 12"

Front Mount Applications

Bulletin Mount Applications

Back to Back Dials to 16"

Continuous Positive Drive

Worm / Worm Gear Drive

Synchronous Torque Gear Motor

Manufactured in the U.S.A.

Specifications

Input Power: 120VAC specify 50Hz or 60Hz

Watts: 3

Weight: 4.75 lbs. - 2.16 kg. (Approximate)

Reset Options: Manual Switch: 970 Reset Panel

Manual Switch with Pilot Clock: 970-PC

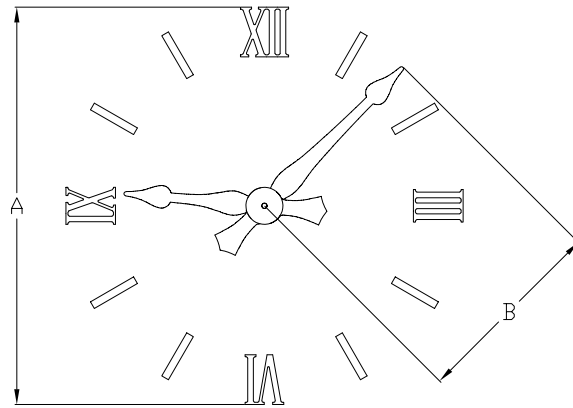
Automatic: MC100 Master Clock (See bulletin C-334 for GPS/LAN interface options)

Ordering Information

1. Determine outside diameter of clock dial. This is not the cabinet size or sight opening.

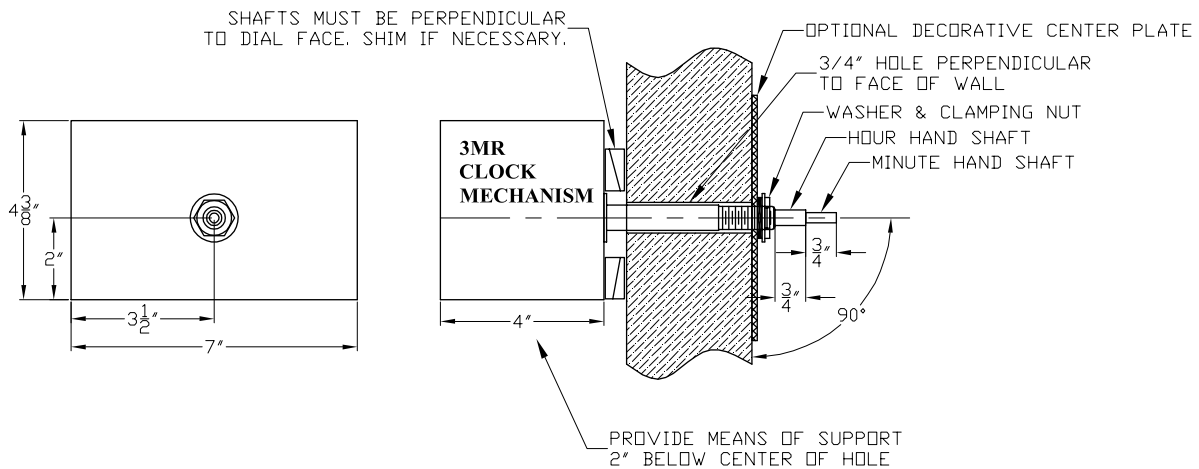
"A" = Dial Diameter

"B" = Minute hand center to tip



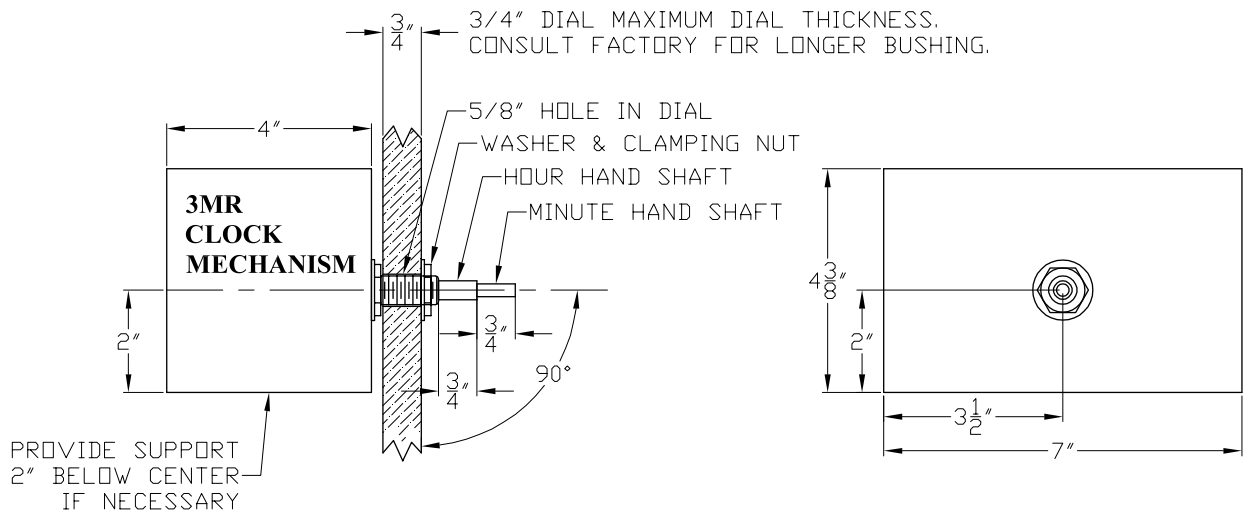
2. Determine the style hand that best matches the dial style or configuration for the project. Custom hand styles can be provided. Consult factory.
3. Determine the length required for the minute hand from center of the dial, to tip of hand that suits your dial style or configuration.
4. Determine dial or wall thickness.

3MR-Through Wall Mount



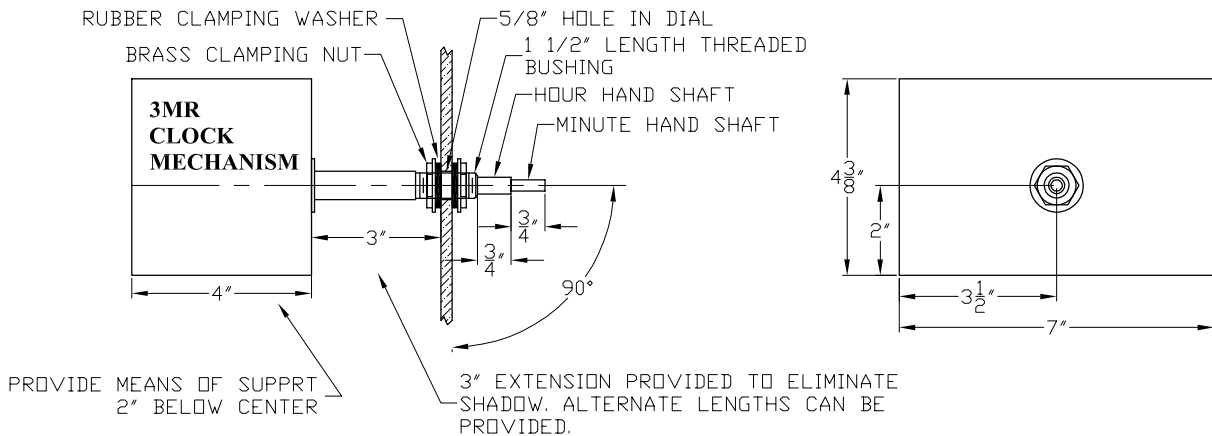
DRWG. 5957A

3MR-Standard Mount



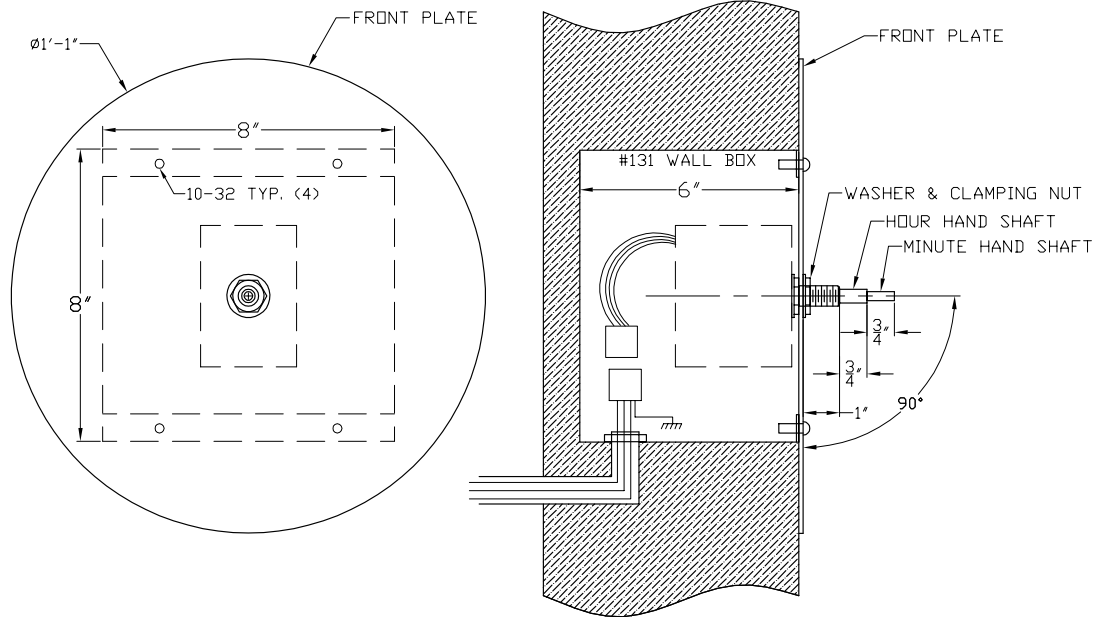
DRWG.

3MR-Illuminated Dial



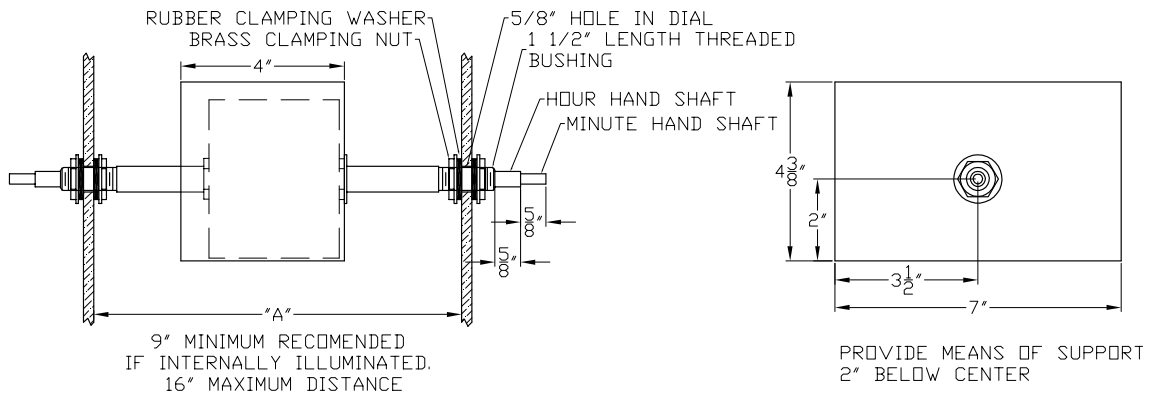
DRWG. 5956A

3MR- Front Mount



DRWG. 6324A

3MDR-Back to Back



DRWG. 5960A