

Food Waste Disposer

- Product – Introduction
- Specification
- Facilities – Manufacturing & Testing



Food Waste Disposer

➤ The convenient way to handle kitchen waste -converting it into an easily and recyclable form and helping preserve the environment .Keeps our kitchen clean and tidy.

➤ It can provide a convenient and environmentally friendly alternative to sending leftovers to landfills. Plus, capable wastewater treatment plants can even recycle food scraps into energy and fertilizer.





Products:

- 1/2HP Heavy Duty
- 3/4HP Deluxe Duty
- 1-1/4HP Premium Duty

Key Features

- Proper Size & Space Saving
Height 380~440mm from body bottom to feeding port top
- Super Reliability
10+ years' life – stainless steel grinding system and armature shaft
- Super Safety
Built-in Protectors for overheat, overload and over-current
Physical protection – splash guard
- Super Quite Operation
Dynamically balanced stainless steel turntable
High quality insulation pack

Key Features

- High Efficiency
 - 4 level grinding system
 - 3500~4000RMP permanent magnet motor
- Easy Installation
 - Simple but reliable locking system
- Easy Cleaning
 - Removable splash guard
- Convenient Connectivity to Dishwasher
 - Corrosion proof 7/8" dishwasher inlet with knock-out plug

Grinding system : Speed Grinding & Quieter



➤ Food waste disposer is driven by small DC motor, using centrifugal force to crush food waste into pieces. Crushing cavity has a filter function, automatically intercept solid food, the knife dish design as abrasive hammer, no razor blades. Safety and fast to disposal the food waste.

➤ The disposer works through grinding system, in which the food waste is ground into fine particles with a maximum diameter of 4mm. These particles pass through the grinding chamber, enter drain pipe and into the sewage treatment plant through city pipe network.

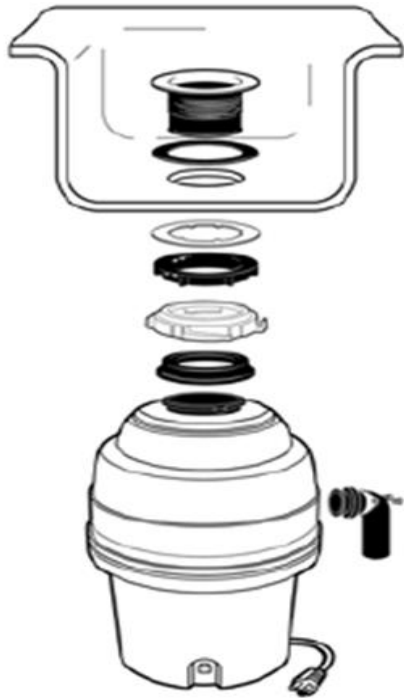
Standard Accessories:

Elbow	Stopper (for BH81/BH110)	Stopper (for BH91-D)	Splash guard (for BH81/BH110)
			

Optional Accessories:

Air Switch	Silver Guard	Wireless Control Switch	Multi Function Tool	Adapter
				

Easy Installation & Operation



- **Guard Master** removable splash guard for easy cleaning and replacement.
- **Mount Master** locking system for easy installation



Easy Installation & Operation



1、 Open the faucet



2、 Push the air switch



3、 Pull into the garbage



4、 Handle the food waste.



5、 Finished

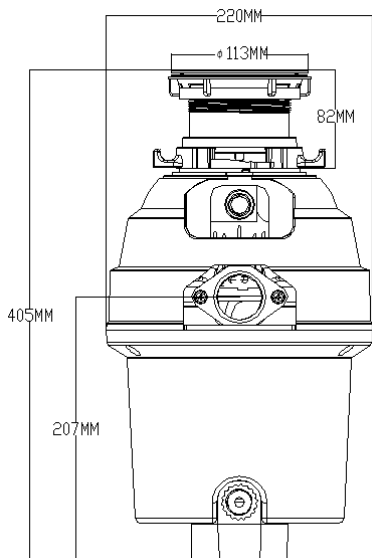


6、 Close the machine

- One click solve all troubles
- Leave a fresh and comfortable kitchen



Specification – BH 91-A Build-in Air Switch

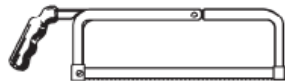


Product Size:	219*219*402mm	Stainless Steel	Yes
Voltage:	220V & 120V	Grinding Ring:	Balanced Stainless
Frequency:	50 & 60HZ	Steel Armature:	Yes
Power:	550W(3/4HP)	Corrosion Proof	Yes
Electric Current:	3.25A & 6A	Grinding Chamber:	Power Cord
Motor:	DC	Attached:	Yes
Rotating Speed:	3800-4000RPM	Overload Protector:	Yes
Product Weight:	5.85KG	Capacity:	≥1000ml
Sound Insulated:	Full	Packing:	1pc/box, 4 boxes/carton, 16cartons/pallet, 64pcs/pallet
Balanced Grinding System:	Yes	Box Size:	250*250*462mm
High RPM-high Torque PM Motor:	Yes	Carton size:	515*515*485mm
Balanced Stainless Steel Turnable:	Yes	Carton Weight:	24.40KG
		Pallet size:	1.05*1.05*2.01m
		1*20GP:	640PCS

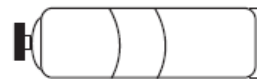
Tools and materials you may need



PHILLIPS & FLATBLADE
SCREWDRIVER



HACKSAW



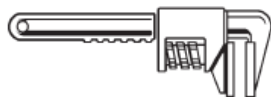
PLUMBER' S PUTTY



DISHWASHER CONNECTOR KIT



HAMMER



PIPE WRENCH



DOWEL OR
STEEL PUNCH

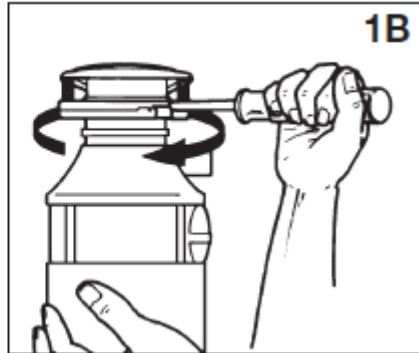
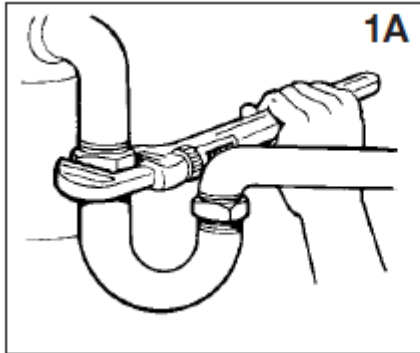


POWER CORD

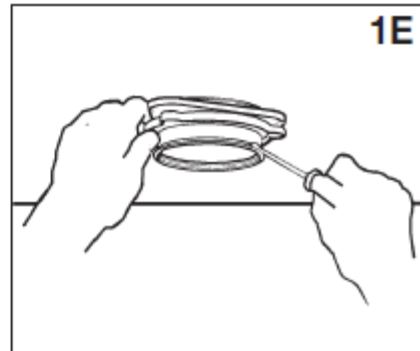
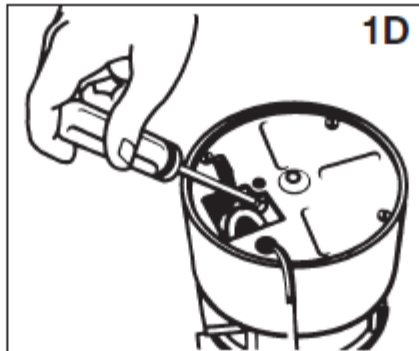
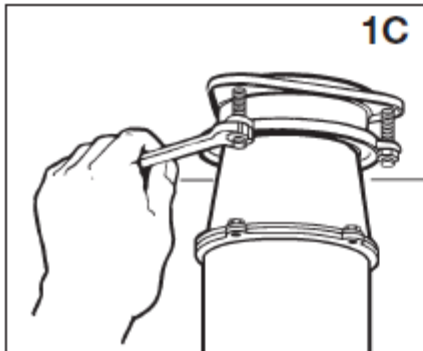


STRAIN RELIEF

1. REMOVAL OF OLD UNIT

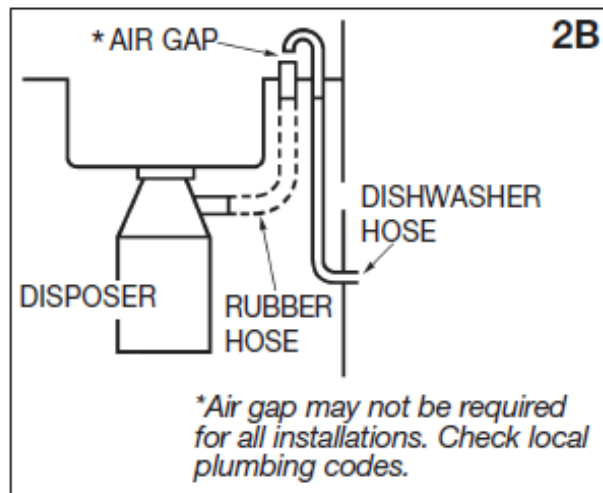
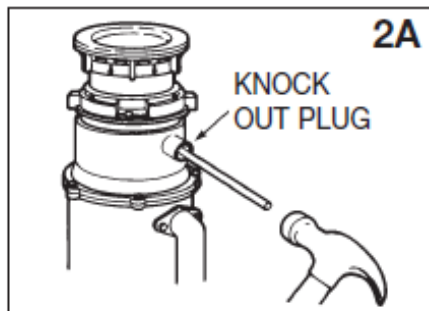


IMPORTANT: Unless you have a new home, this is a good time to clean out the trap and drain lines by running a drain auger or plumber's snake before installing your new disposer.

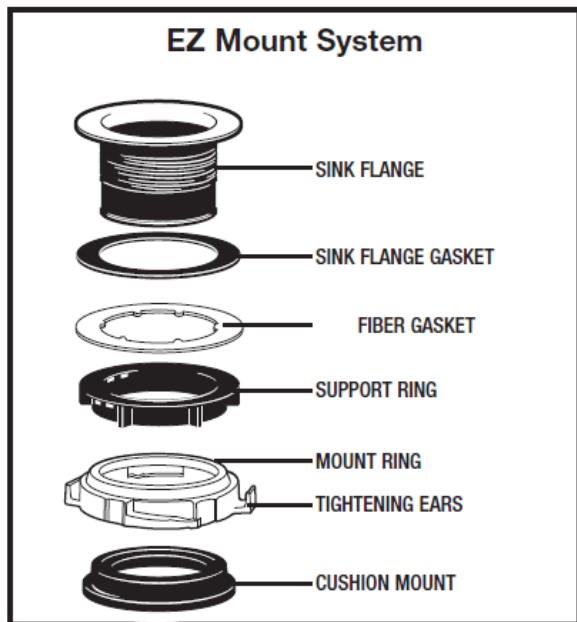


2. DISHWASHER CONNECTION

If you are utilizing a dishwasher, complete the following procedure. If dishwasher is not to be connected go on to section 3.

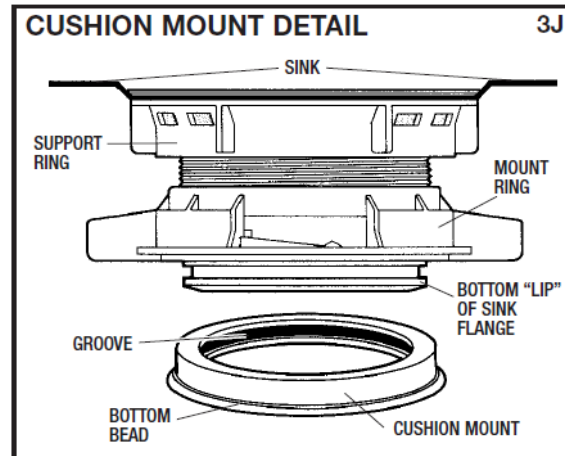
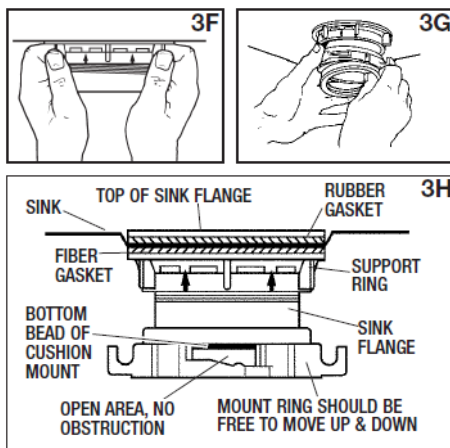


3. INSTALLATION OF MOUNTING ASSEMBLY



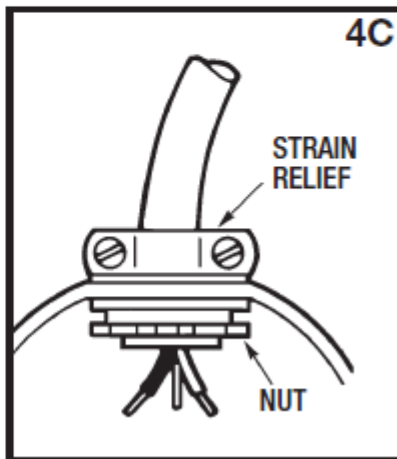
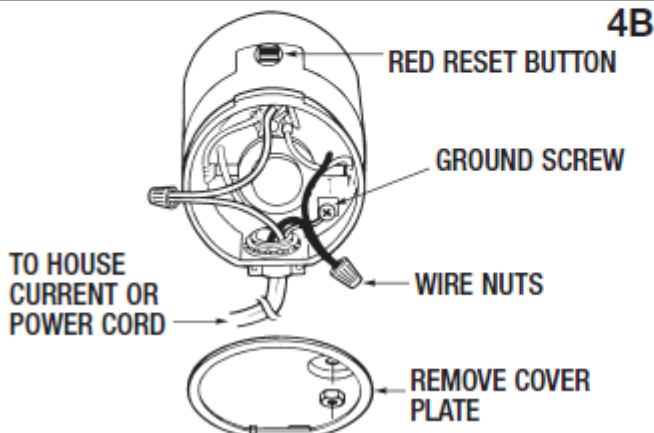
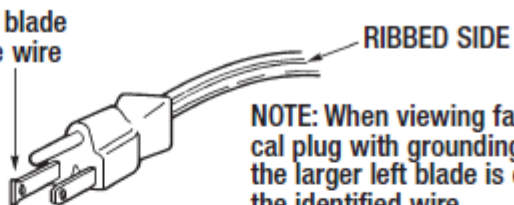
IMPORTANT NOTICE: CUSHION MOUNT DETAIL

When the cushion mount is installed correctly, the lip of the sink flange fits into the groove on the inside of the cushion mount and mount ring can be pulled downward over cushion mount and will be free to rotate. The bottom bead of the cushion mount acts as a gasket between the bottom of the sink flange and the top of the disposer. See illustration 3J.

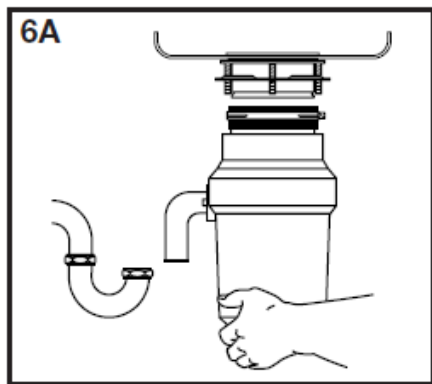
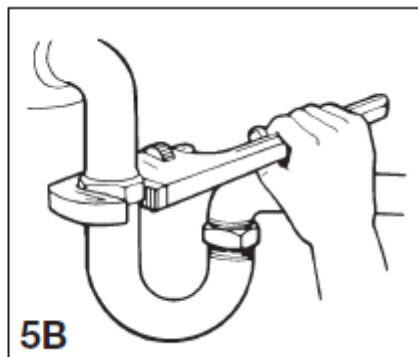
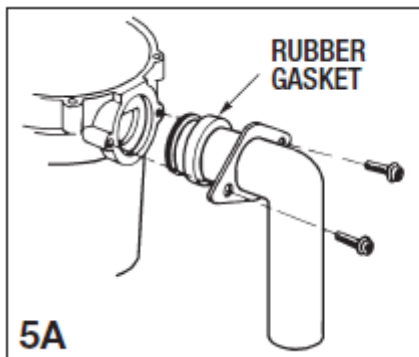


4. ELECTRICAL CONNECTIONS

Trace lead connected to this blade and attach that lead to white wire on disposer.

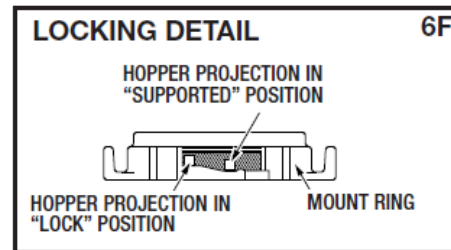
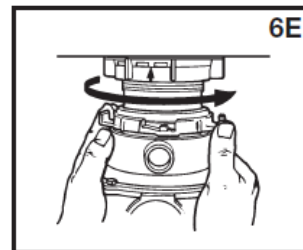
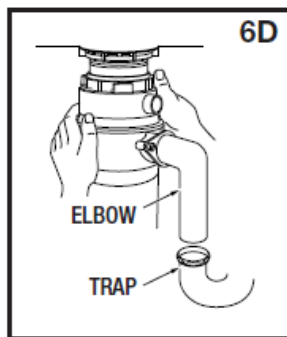
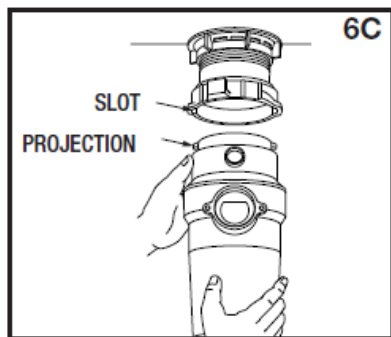


5. ATTACHING DISCHARGE ELBOW



- A. Connect waste elbow to the disposer (see 5A), proceed to step 6 and then connect bottom of the elbow by tightening the slip nut (see 5B).

6. CONNECTING DISPOSER TO MOUNT ASSEMBLY (continued)



Line up disposer under mounting assembly. Guide hopper projections into mount ring slots. Turn mount ring about 1/4" to right so that disposer is temporarily supported (see 6C).

Turn mount ring and disposer until disposer elbow lines up with trap (see 6D).