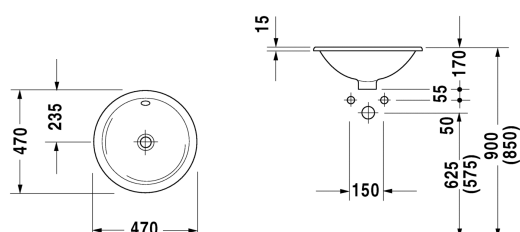


Vanity basin # 0468470000

| < Ø 470 mm > |



Vanity basin	Dimension	Weight	Order number
countertop basin, with overflow, without tap platform, underneath glazed, Ø 470 mm			
Colors			
00 White Alpin			
Variant			
☒	Ø 470 mm	7.300 kg	0468470000
Sanitary ceramics with the special WonderGliss surface finish will remain clean and attractive-looking for a long time to come. When ordering WonderGliss please add a "1" as eleventh digit to the model number.			
Accessory			
Push-open waste for washbasins with overflow		0.400 kg	005052
Suitable products			
Vanity unit wall-mounted 1 pull-out compartment, countertop including one cut-out, for 1 vanity basin central, 800 x 550 mm	800 x 550 mm		KT6794
Vanity unit wall-mounted 1 pull-out compartment, countertop including one cut-out, for 1 vanity basin central, 1000 x 550 mm	1000 x 550 mm		KT6795
Vanity unit wall-mounted 1 pull-out compartment, countertop including one cut-out, for 1 vanity basin central, 1200 x 550 mm	1200 x 550 mm		KT6796
Vanity unit wall-mounted 2 pull-out compartments, 1 countertop with one cut-out or two cut-outs, for 1 or 2 vanity basin(s), 1400 x 550 mm	1400 x 550 mm		KT6797 B/L/R
Console including drawer for vanity basin countertop including one cut-out, 1 drawer beneath console, 1 cover beneath console, 3 console supports, 1500 x 565 mm	1500 x 565 mm		DL6891 L/R
Console including drawer for vanity basin countertop including one cut-out, 1 drawer beneath console, 1 cover beneath console, 3 console supports, 1800 x 565 mm	1800 x 565 mm		DL6892 L/R
Vanity unit for console 1 pull-out compartment, compartment consists of glass dividers and 2 boxes (small/large), 600 x 548 mm	600 x 548 mm		XL6719

Vanity basin # 0468470000

|< Ø 470 mm >|

Vanity unit for console 1 pull-out compartment, compartment consists of glass dividers and 2 boxes (small/large), 800 x 548 mm	800 x 548 mm	XL6713
Vanity unit for console 1 pull-out compartment, compartment consists of glass dividers and 2 boxes (small/large), 1000 x 548 mm	1000 x 548 mm	XL6715

All drawings contain the necessary measurements which are subject to standard tolerances. Exact measurements, in particular for customised installation scenarios, can only be taken from the finished ceramic piece.