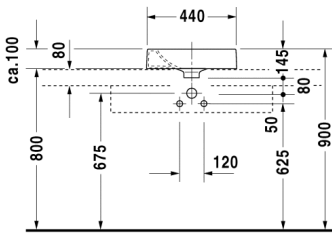
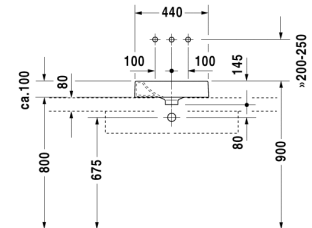
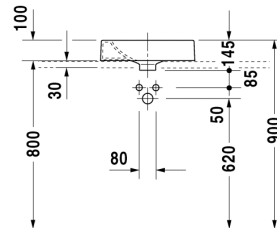
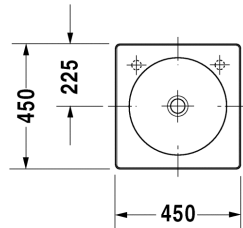


**Above counter basin # 032045..00 / 032045..08 / 032045..09**

|< 450 mm >|

Architec



Above counter basin	Dimension	Weight	Order number
ground, without overflow, with tap platform, fixings included, 450 mm Additional information Soap dispenser hole Ø 30 mm right or left available on request / Max. Ø 70 mm for lotion tank approved / For furniture and prices please see the furniture part			
<b>Colors</b>			
00 White Alpin			
<b>Variant</b>			
450 mm ☒	450 x 450 mm	11,400 kg	032045..00
450 mm ●	450 x 450 mm	11,400 kg	032045..08
450 mm ●	450 x 450 mm	11,400 kg	032045..09
<b>Accessories</b>			
Slotted waste	80 mm	0,400 kg	005038

All drawings contain the necessary measurements which are subject to standard tolerances. They are stated in mm and are non-binding. Exact measurements, in particular for customised installation scenarios, can only be taken from the finished ceramic piece.