

# INSTRUCTION MANUAL

DIY CLIPPER



**diy.**  
CLIPPERS

## 1. Precautions

- ❑ Please read these instructions carefully before use.
- ❑ Keep present instructions for future references.
- ❑ Check that your main voltage corresponds to that stated on the appliance.
- ❑ Only use the appliance in the manner indicated in these instructions.
- ❑ Inform potential users of these instructions.
- ❑ Never leave the appliance unsupervised when in use.
- ❑ The appliance must be used only for its intended purpose. Not responsible for any possible damage caused by incorrect use or improper handling.
- ❑ Children and persons with disabilities are not always aware of the danger posed by the use of this appliance.
- ❑ This device is not a toy, do not leave in the hands of small children or people with disabilities.
- ❑ In order to ensure your children's safety, please keep all packaging (plastic bags, boxes, polystyrene etc.) out of their reach.
- ❑ Caution! Do not allow small children to play with the foil. THERE IS A DANGER OF SUFFOCATION!
- ❑ Never immerse the appliance in water or any other liquid for any reason whatsoever due to danger of electrocution.
- ❑ Never place it into the dishwasher.
- ❑ Never use the appliance near hot surfaces.
- ❑ Never use the appliance outside and always place it in a dry environment.
- ❑ Never use accessories that are not recommended by the producer. They could constitute a danger to the user and risk to damage the appliance.
- ❑ Make sure the appliance has cooled down before cleaning and storing it.
- ❑ This appliance is not intended to be operated by means of an external timer or separate remote-control system.
- ❑ Always place the unit on a flat surface. Ensure, also, not to cover the device and not to put anything on it.
- ❑ Incorrect operation and improper use can damage the appliance and cause injury to the user.
- ❑ This device, designed for home use, complies with standards relating to this type of product.
- ❑ The item is not to be used, if it has been dropped or if there are visible signs of damage.
- ❑ This appliance is only intended for household use.
- ❑ Regarding the instructions for cleaning, please refer to the below paragraph of the manual.

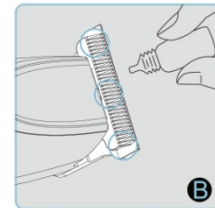
- ❑ Keep this out of the reach of children to avoid cutting by clipper blade or swallowing its small parts.

## 2. Specifications

Lithium Rechargeable Battery	Rated Voltage :3.7V
	Charging time: 90 minutes
	Running time: 60 minutes
	Capacity: 700mAh
Adaptor – UL Cert.	Input:100-240V 50/60Hz
	Output: DC 5.0V 1A
	Power:3W

## 3. Notices

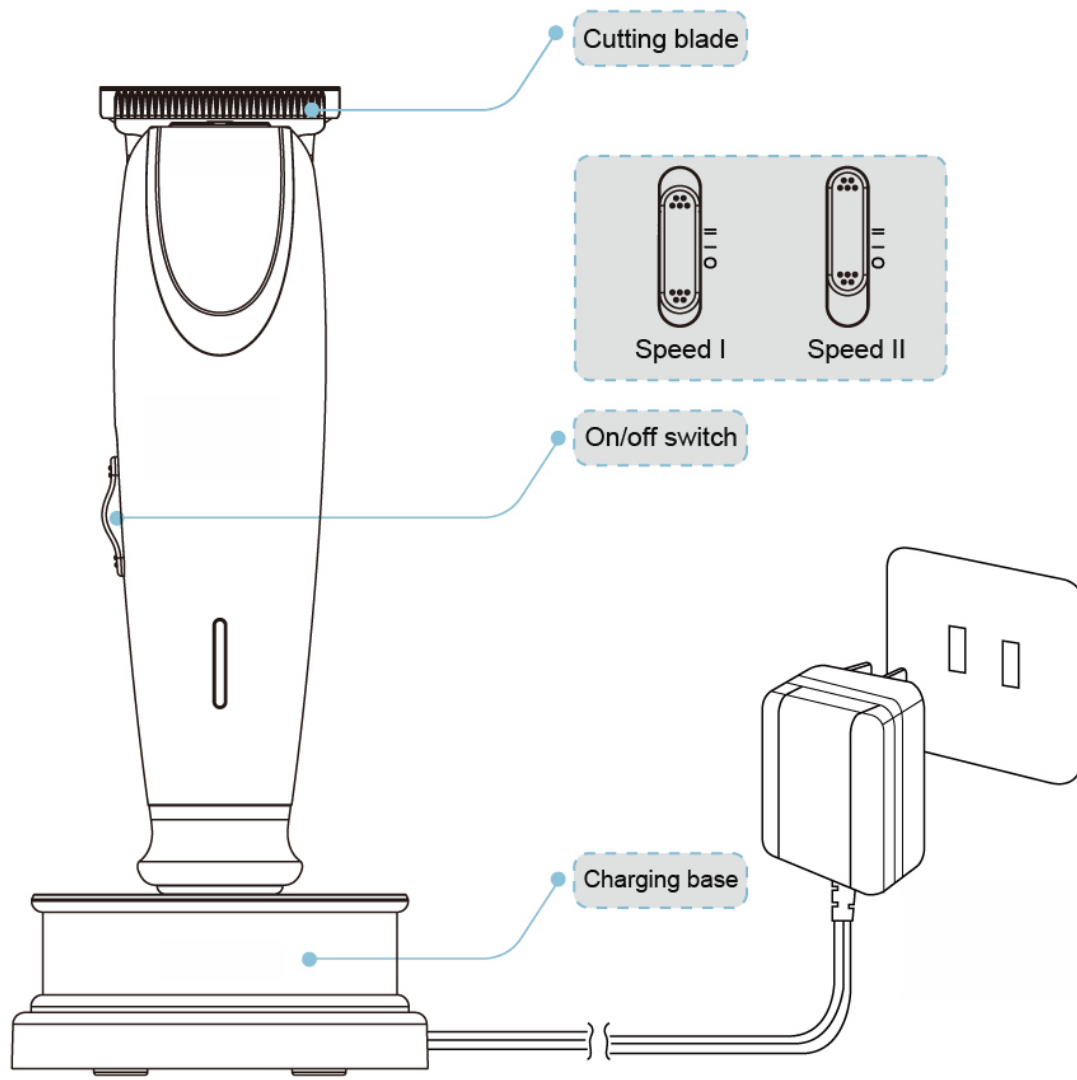
Add the oil into the cutter head before use. (Check the left picture for reference) The product body may be a little hot when using or charging. it will not affect its performance. Add one drop of oil to each of the 3 positions.



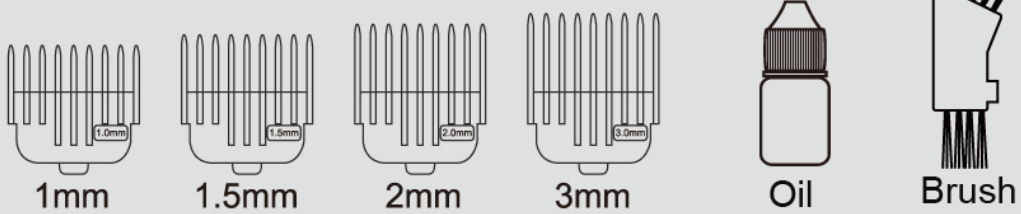
But

- Add the oil to the positions as directed by the circles on the above image.
- Don't use petrol, alcohol, thinner to clean the product. This may change the product.
- Use diluted soap water to clean the product.
- Don't charge the product if the room temperature is higher than 104° F or lower than 32° F.

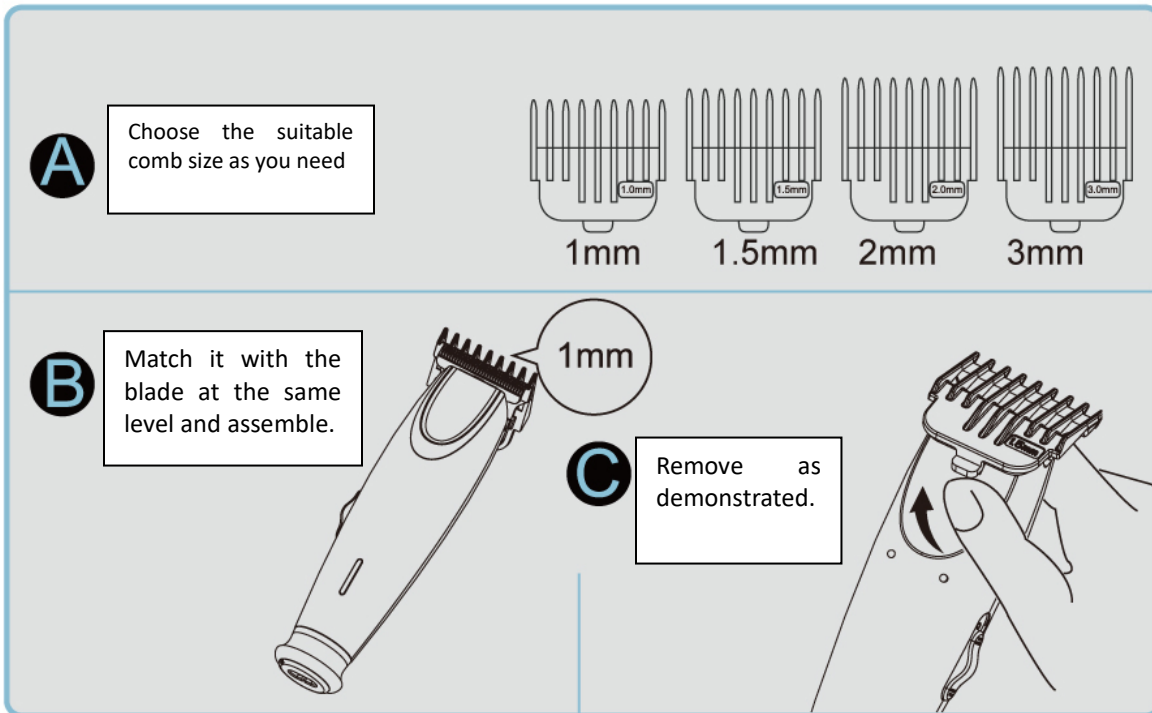
#### 4. Parts name



#### Accessories



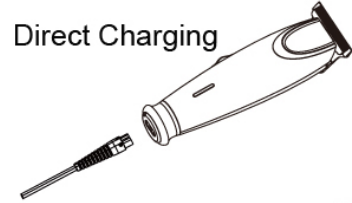
## 5. Cutting Size adjustment



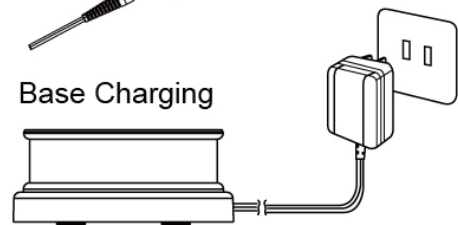
## 6. Charging Method

- Put the adaptor connector terminal into the base.
- Make sure the product is in the position, "Power Off" and then put it into charging base. The indicator will show red. As soon as it is fully charged, the light will turn green.
- Charging time is around 1.5 hours.
- If using charging base, please connect the adaptor with the base and then plug into the socket. And then put the product into the base to start the charging.

Direct Charging



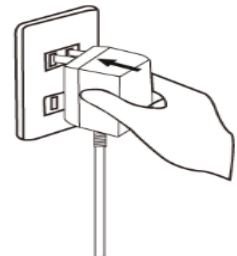
Base Charging



## 7. Charging Notices

- Notes: If the product is not being used for a long time, please ensure the battery be charged at least one time within 3 months to avoid damage. Plug-and-play function means that you can use the product while charging in case of insufficient power.
- Put the adaptor connector terminal into the port of the product and then plug into a socket. Switch on the product and then use it.
- After using, switch off and then disconnect the adaptor connector with product.
- If the battery has been used out, it may be difficult to start the product even if it is plugged in. You should restart it after charging at least one or two minutes. while charging, the product body and the adaptor may be a little hot, this is normal.

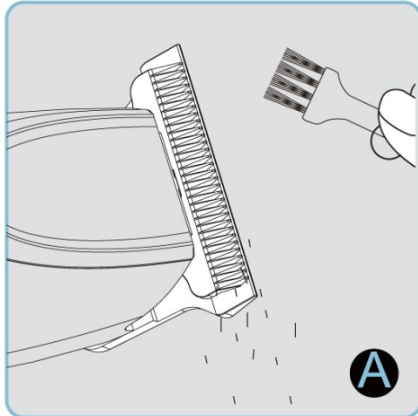
The using met



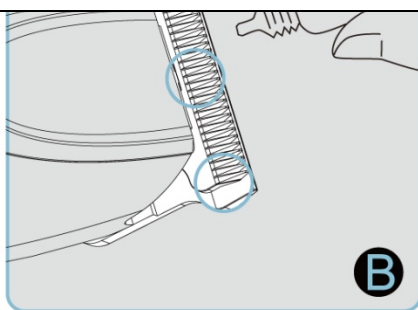
- Take the adaptor out from the power socket  
Take the plug out from the product  
Please hold the plug and take it out.  
Don't pull the cord in order to avoid any damage for adaptor.

8. Don't charge the product more than 6 hours each time, or the lifetime of battery will be reduced. Overcharging battery may void warranty.

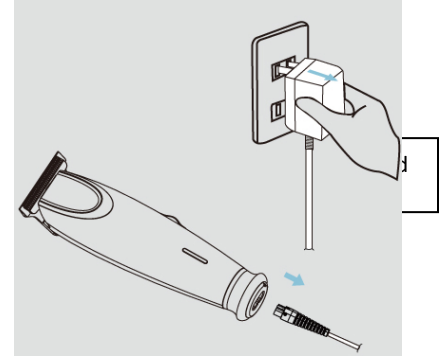
## 9. Cutting Head Cleaning & Maintenance



Remove remaining hair



Put a drop of oil into each circle



## 10. Repairing Service

- From the date of purchase, you can get a one year warranty if our appointed repairman confirms that the problems or the defects are caused by production process or material. (Except for the changes of blade.)
- This free service doesn't include the attachment, auxiliary device, transportation charge, and door-to-door service charge.
- It can only be valid as the date of purchase both in warranty card and purchase voucher are matched.
- Warranty card and invoice or other purchase voucher should be provided when repairing.
- The warranty card only can be used in the United States.
- The warranty card is the evidence of free repairing within specified conditions and period. But it doesn't limit the rights of consumers in law.
- Please keep the warranty card well after purchase.

Free repairing service can't be provided under the following conditions:

- The damage was caused by the repair or reconstruct in the place which isn't appointed by our company.
- The damage was caused by incorrect use, dropping, or accidents.
- The damage was caused by natural disaster or abnormal voltage.
- The damage was caused by industrial use, commercial use, or some other uses which are out of the ranges mentioned in instruction manual.

## **11. Warning!**

- Don't take the adaptor out from the socket by wet hands to avoid the risk of electric shock.
- As soon as the charging is finished:
  - Take the adaptor out from the power socket
  - Take the plug out, don't pull the cord in order to avoid any damage for the adaptor.