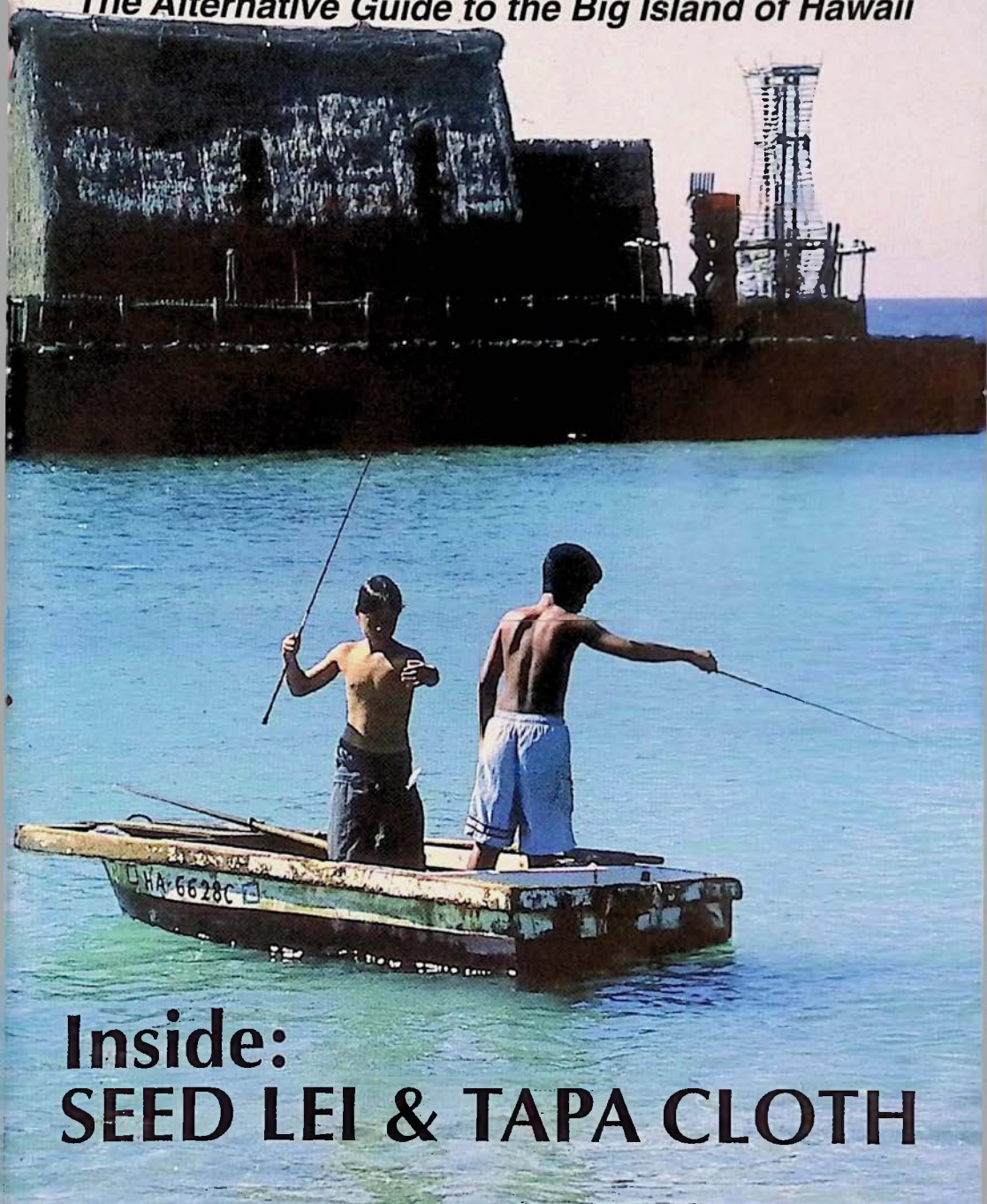


JUNE 1997

COMPLIMENTARY

Coffee Times

The Alternative Guide to the Big Island of Hawaii



**Inside:
SEED LEI & TAPA CLOTH**



KONA COFFEE

Daily Farm & Mill Tours



Open daily 9am to 5pm (FREE)

Imagine...



for a moment the smell of freshly milled Kona coffee, while in the background cascading cliffs drop into glassy Kealahou Bay and a golden sun surveys the day. In the trees above spongy mangos, papaya and bananas wait to drop into your hands. And, as you sip a cup of Kona coffee a distant sun shower passes over a lazy mountain and it's then that you realize your imagination for now has turned perfectly real.



See first hand how coffee is farmed and milled in Kona and view our collection of 18th and 19th century Hawaiian prints. We specialize in only 100% Kona coffee and are a family owned complete processing & roasting facility. Stop at our visitor center to taste and purchase some 100% Kona Coffee, Macadamia Nuts, Chocolate Covered Coffee Beans, T-Shirts and many other local items.

**CALL AHEAD FOR
SPECIAL GROUP TOURS**

For Mail Order Sales Call or Write: 1-800-662-5880 (808) 328-9658 Fax: 328-8693
Bay View Farm, P.O. Box 680, Honaunau-Kona HAWAII 96726

BUYING & SELLING

VINTAGE HAWAIIAN & POLYNESIAN

- ◆ Paintings ◆ Artifacts ◆ Rare Books ◆ Hawaiiana
- ◆ Hula Dolls ◆ Mings Jewelry ◆ Quilts
- ◆ Photography ◆ Prints & Engravings ◆ Old Koa Furniture
- ◆ Vintage Aloha Attire ◆ Ephemera

Come to Hawaii's number one source for all of the above. We are located in historic downtown Hilo in the Court Mauna Kea Building at the intersection of Furneaux and Keawe Streets.



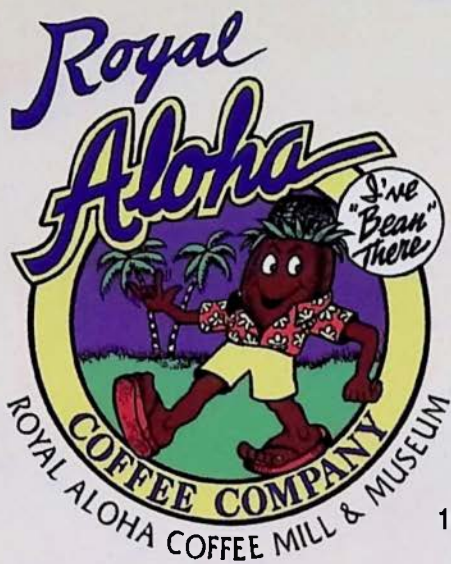
MAUNA
KEA
GALLERIES

276 Keawe Street,
Hilo, Hawaii 96720
808-969-1184
Fax: 808-969-4827

Appraisals available by senior certified appraiser.
We ship anywhere in the world by FedEx.

We will fly to buy any or all of the above listed items... Top dollar paid. House calls made!

BROUGHT TO YOU BY THE LARGEST COFFEE COOPERATIVE IN THE UNITED STATES
• 300 FARMERS STRONG •



FREE COFFEE TASTING

(ONLY PURE 100% KONA
TOP GRADES SOLD)

OPEN 9am to 6pm
7 DAYS A WEEK

*located at the base
of Napoopoo Rd.,
at Kealakekua Bay*

**1-800-566-2269,
808-328-9851**

160 Napoopoo Rd., Captain Cook, HI 96704
Box 1827, Kealakekua, HI 96750

Kona's Oldest Coffee Mill

*and the greatest
gourmet coffee in the world.*



A LICENSEE OF ROYAL ALOHA COFFEE TEA & SPICE CO., INC.

ROYAL ALOHA COFFEE MILL & MUSEUM

A warm mahalo to our advertisers.
Without them this guide would not possible.

*Please take the time to tell them you saw their ad in
 Coffee Times.*

And enjoy your stay on the Big Island of Hawaii.



Images as seen in *Coffee Times*

Voyagers

(Whalesong Publishing 1991) features 140 examples of Hawaii Living Treasure Herb Kane's paintings and sculptures, along with his telling of myths, legends, and history of Hawaii and the South Pacific. 176 pages. \$24.95 Includes Priority Air Mail and handling.

For an Autographed Book
Call 1-800-750-5662

*books by Artist-Historian Herb Kawainui Kane are personally
 inscribed and autographed by the artist/author.*

(Kawainui Press 1987) Myths, traditions, romances, and folktales about She Who Must Be Obeyed on the Island of Hawaii as written and illustrated by Herb Kawainui Kane. 72 pages, 36 in full color. \$9.95 Includes Priority Air Mail and handling.

PELE



DINE IN KONA'S MOST TRANQUIL SETTING.

'AHA 'AINA (LŪ'AU) & SHOW--

An Island Tradition for 26 Years

Authentic imu (underground oven) ceremony followed by a Polynesian Revue
 Fridays, 5:00 p.m.

PANILO STEAK & SEAFOOD DINNER

A country-style cook-out with music by John Keawe. Wednesdays, 6:00 p.m.

OCEANSIDE DINING

Seafood and Island Cuisine at the Hale Moana and Hale Samoa.

Lunch Buffet: 12:30-2:00 p.m. daily. Dinner from 6:00 p.m.

Reservations required. Call 325-6787 or 325-5555.

Complimentary historical tours scheduled daily.

Kona Village
 RESORT 

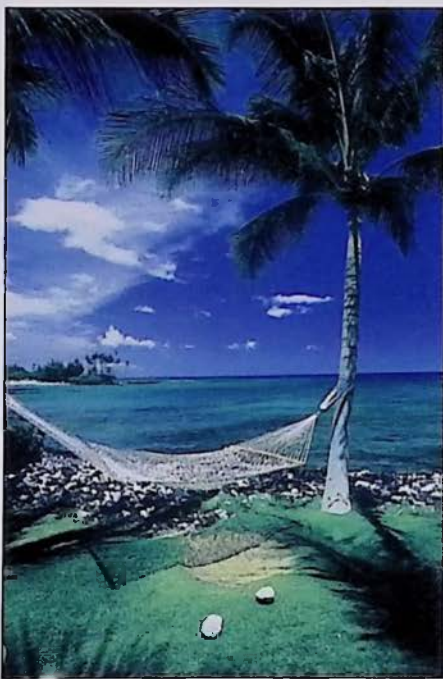
6 miles north of Keahole-Kona International Airport.

Coffee Times

REGIONAL PAGES

*A comprehensive guide to touring
the Big Island of Hawaii.*

- 14** Ka'u (South Point)
- 16** Volcano
- 27** Hilo-East Hawaii
- 30** Pahoa-Puna
- 36** Honokaa-Hamakua
- 40** Waimea
- 51** Kohala Coast
- 54** North Kohala
- 56** Holualoa
- 57** North Kona
- 60** South Kona



1997 BARISTA WORLD SERIES COMPETITION



WE'RE HOLDING TRYOUTS FOR THE
MOST VALUABLE BARISTA



"The Sultan of Shot" wins a trip for two to Nuova Simonelli's plant in Belforte del Chiente, Italy, and more.

WESTERN DIVISIONAL PLAYOFFS
to be held in conjunction with:

The Northwest Foodservice Show

Oregon Convention Center
April 12-14

• valuable prizes for regional winners •

Join us at **NASCORE '97** for the
**BARISTA WORLD SERIES
CHAMPIONSHIP**



North American Specialty
Coffee Retailers' Expo

Oregon Convention Center, Portland
October 4 - 6, 1997

*For information on entering your divisional
playoffs or attending NASCORE '97 call*

800/548-0551

FAX 503/653-5690

sponsored by



FRESH CUP MAGAZINE

The voice of the Specialty Coffee Industry

TREAT YOURSELF TO A BAD ASS COFFEE EXPERIENCE TODAY

THE LITTLE COMPANY THAT MADE KONA FAMOUS
(OR WAS IT THE OTHER WAY AROUND?)



WE SPECIALIZE IN PURE 100% KONA

(KONA BLEND IS ONLY 10% KONA, AND YOU'LL FIND THAT ALL OVER THE ISLAND)

MACADAMIA NUT CO.

KEAUHOU STORE

ORIGINAL KAINALIU STORE



WE ALSO OFFER THE BEST TASTING CUP OF COFFEE, ESPRESSO OR LATTE IN HAWAII AND IF YOU DON'T DRINK COFFEE WE HAVE SOME GREAT T-SHIRTS

VISIT ANY OR ALL OF OUR 7 BIG ISLAND LOCATIONS

**THE ORIGINAL STORE
KAINALIU VILLAGE, HI**

(808) 322-9196

**THE BAD ASS COFFEE CO.
OF KAWAIHAE, HI**

(808) 882-7019, (800) 719-2345

**"THE ISLAND'S OLDEST"
MACADAMIA NUT FACTORY
HONOKA'A, HI**

(808) 775-7743

**WATERFRONT ROW
ALII DRIVE KAILUA, KONA**

(808) 326-4637

**THE BAD ASS SHOP
DOWNTOWN ALII DRIVE**

(808) 329-8871

**KEAUHOU SHOPPING CENTER
NORTH END OF ALII DRIVE
KEAUHOU, KONA**

(808) 322-0100

**AND... THE BAD ASS MACADAMIA NUT CO., KEALAKEKUA
81-981 HALEKI ST. (808) 322-4135**

**WHOLESALE & RETAIL - BUSINESS OPPORTUNITIES AVAILABLE
CONTACT BAD ASS CORPORATE OFFICES AT P.O. BOX 205,
KEALAKEKUA, HI 96750 OR CALL US AT 808-322-2825**

Advertisers:

ART GALLERIES

Akaka Falls Inn & Gift Gallery	963-5468	P. 29
Aumary Saint-Gilles Cont. Fine Art	775-9278	P. 39
Kohala Koa Gallery (at Bamboo Rest.)	889-0055	P. 55
Mauna Kea Galleries	969-1184	P. 3

COFFEE FARMS

Bay View Farm & Mill	328-9865	P. 2
Captain Cook Coffee Co.	322-3501	P. 9
Royal Aloha Coffee Mill & Museum	328-9851	P. 4

COFFEE RETAILERS AND CAFES

Bad Ass Coffee Co.	322-2825	P. 7
Bikers Brew Coffee	329-2254	P. 59
Holuakoa Cafe	322-CAFE	P. 56
Mamane Street Bakery & Espresso	775-9478	P. 30
Waimea Coffee & Co.	885-4472	P. 41

DINING

Akaka Falls Inn & Gift Gallery (Deli)	963-5468	P. 29
Bamboo (Pacific Rim, Thai.)	889-5555	P. 55
Cafe Pesto (Pac Rim Italian) Kaiwihae	882-1071	P. 53
Hilo	969-6640	
Kilauea Lodge (Continental)	967-7366	P. 17
Luquin's Mexican Restaurant (Mexican)	965-9990	P. 31
Nuang Mai (Thai Kitchen)	965-8186	P. 31
Tex Drive Inn (Hawaiian, American)	775-0598	P. 39
The Godmother (Italian)	965-0055	P. 31

LODGING

Chalet Kilauea	967-7786	P. 18
Hale Kai B&B	935-6330	P. 29
Hale Ohia Cottages	967-7986	P. 17
Hilton Waikoloa Village	885-1234	P. 19
Kona Village	325-5555	P. 5
The Village Inn	965-6444	P. 31

AIR, LAND AND OCEAN ADVENTURES

Blue Hawaiian Helicopters	961-5600	P. 9
---------------------------	----------	------

SPECIALTY SHOPS & SERVICES

General Stores Naalehu Fruit Stand	929-9009	P. 15
Photo Imoco Media Inc.	883-0878	P. 59
Publications Ka'u Landing	929-8130	P. 15
Real Estate Kohala Pacific Realty	889-5181	P. 55
Savio Realty	934-7300	P. 20
Flowers Hawaii Tropicals Direct	1-800-840-3660	P. 63

Coffee Times

Published by Coffee Times ©

(Established 1993)

Box 1092, Captain Cook, HI 96704

EMAIL: coftimes@ILHawaii.net

1-800-750-KONA, (808) 326-7637

Les Drent

Publisher and Founder

COVER PHOTOS

March: Miguel A Meza Mozqueda picking coffee in Holualoa *by Les Drent* **April:** Hula on a black sand beach *by Kirk Aeder* **May** Cafe Pesto Food Shot. *by Kirk Aeder* **June:** Boys fishing in Kailua Bay. *by Kirk Aeder* **July:** Girl beside canoe at Hapuna Beach Park on the Kohala coast *by Kirk Aeder* **August:** Green Sea Turtle named Goofyfoot *by Ursula Keuper-Bennett and Peter Bennett.*

STAFF

Publisher: **Les Drent**

Photo Editor: **Kirk Aeder**

Feature Writer: **Sophia Schweitzer**

Feature Writer: **Betty Fullard-Leo**

Visit Our
World Wide Web Site at:
<http://www.coffeetimes.com>

Coffee Times is not the manufacturer, or an agent of the manufacturer, for the goods and services being advertised herein and therefore makes no express or implied warranty of any kind with respect to those goods and services. Illustrations used herein are for design purposes only and do not necessarily depict the actual items offered by the advertisers. This publication may not be reproduced in whole or in part without the prior written consent of Coffee Times and reserves the right to edit, revise or refuse any advertisement.

TREAT YOURSELF TO A BAD ASS COFFEE EXPERIENCE TODAY

THE LITTLE COMPANY THAT MADE KONA FAMOUS
(OR WAS IT THE OTHER WAY AROUND?)



WE SPECIALIZE IN PURE 100% KONA

(KONA BLEND IS ONLY 10% KONA, AND YOU'LL FIND THAT ALL OVER THE ISLAND)

MACADAMIA NUT CO.

KEAUHOU STORE

ORIGINAL KAINALIU STORE



WE ALSO OFFER THE BEST TASTING CUP OF COFFEE, ESPRESSO OR LATTE IN
HAWAII AND IF YOU DON'T DRINK COFFEE WE HAVE SOME GREAT T-SHIRTS

VISIT ANY OR ALL OF OUR 7 BIG ISLAND LOCATIONS

**THE ORIGINAL STORE
KAINALIU VILLAGE, HI**

(808) 322-9196

**THE BAD ASS COFFEE CO.
OF KAWAIHAE, HI**

(808) 882-7019, (800) 719-2345

"THE ISLAND'S OLDEST"

**MACADAMIA NUT FACTORY
HONOKA'A, HI**

(808) 775-7743

WATERFRONT ROW

ALII DRIVE KAILUA, KONA

(808) 326-4637

**THE BAD ASS SHOP
DOWNTOWN ALII DRIVE**

(808) 329-8871

KEAUHOU SHOPPING CENTER

NORTH END OF ALII DRIVE

KEAUHOU, KONA

(808) 322-0100

AND... THE BAD ASS MACADAMIA NUT CO., KEALAKEKUA

81-981 HALEKI ST. (808) 322-4135

**WHOLESALE & RETAIL - BUSINESS OPPORTUNITIES AVAILABLE
CONTACT BAD ASS CORPORATE OFFICES AT P.O. BOX 205,
KEALAKEKUA, HI 96750 OR CALL US AT 808-322-2825**

"Blue Hawaiian is the Cadillac of helicopter tour companies."

Frommer's Guide to Maui

We've spent ten years building that reputation. With a flawless safety record. No compromises. A tradition of excellence and rock-steady professionalism. And isn't that what you're really looking for in a helicopter company?

**Jurassic Park.
Crimson Tide.
Honeymoon In Vegas.
Flight of the Intruder.**



Top Hollywood directors choose Blue Hawaiian Helicopters.

Perhaps they know something you should know?



Blue Hawaiian's fleet of

float-equipped, fully air-conditioned **American Eurocopter ASTARS** is the finest in Hawaii.



The prestigious **5 Star Diamond Award of Quality** from the American Academy of Hospitality Sciences. In Hawaii, Blue Hawaiian is the only activity company, of any kind, to be so honored.

Exclusive - Broadcast Quality 3-CCD Video System.

Clearly superior 4-camera video of you on your flight - included free.



Incredible **Bose Electronic Noise-Canceling Headsets**. \$1500 each, just for your comfort. A Blue Hawaiian exclusive.



Battle-tested. Time-tested.



The best, most experienced pilots fly with Blue Hawaiian. Most are high time, military trained, decorated veterans.



DREAMS COME TRUE WITH BLUE HAWAIIAN™

**Big Island: (808) 961-5600
Maui: (808) 871-8844**



"WANTED"
Coffee Farmers

Will Pay \$1.00 Per Pound for your Coffee Cherry (Payment Every Two Weeks)

Free Cherry Pick-up, Fertilizer, and Coffee Trees
Farmers Are the Key to the Success of the Kona Coffee Industry!

**Please Call (808) 322-3501
For Assistance and Cherry Pick-up Appointment**

**Estate Grown Captain Cook Coffee Co. Ltd.
100% Pure Kona Coffee
"Roasted to Order" Gift Packages
Call 1-800-4-CRITIC • The Coffee Critic, Inc.®**

Did you know that out of the **20 million pounds** of Kona coffee bought and **consumed** every year under the name Kona only **2 million pounds** of that coffee is actually **grown** here in Kona? And the **frightening fact** of the matter is... that most Kona coffee drinkers around the world have no idea that what they are drinking is a coffee containing 90% of something other than Kona coffee. It's time for this deceptive labeling and misuse of the Kona name to end. In an attempt to preserve the coffee growing heritage here in Kona and the gourmet reputation of our local coffee and to combat this widespread misrepresentation of the Kona name to sell counterfeit coffee we here at *Coffee Times* magazine unconditionally guarantee that the coffee you receive from us is farmer direct, contains only 100% Kona coffee and meets the State of Hawaii's highest grading standards. Enjoy the pure taste of the world's finest coffee and help preserve our local farm lands by buying only 100% Kona.



\$15 lg., xlg.
+ \$3 shipping

DON'T JUST BLEND IN



BUY ONLY 100% KONA
The difference is in the cup

Help Fight Counterfeiting

Call 1-800-750-5662

By purchasing this anti-counterfeiting cartoon t-shirt from Coffee Times you will be helping to spread the word about the deceptive labeling practices that plague the Kona coffee industry.

Coffee Times

The Aroma of History

It has been many years since Reverend Samuel Ruggles brought the first coffee plant cuttings to Kealahou-Kona, Hawaii. The cuttings were taken from plants growing at the home of chief Boki, governor of Oahu, who with help from agriculturalist, John Wilkinson, brought back several young plants acquired in Rio de Janeiro during a royal British voyage taken in 1825.

Even though coffee was in Kona in 1828 it was not immediately seen as a viable agricultural commodity. However, the particular conditions in Kona's climate and soil turned out to be some of the best known in the world for growing coffee. The sheltered and fertile western

"Kona coffee has a richer flavor than any other, be it grown where it may and call it by what name you please."

Mark Twain, 1866

slopes of Mauna Loa and Mt. Hualalai along with sunny mornings and gentle afternoon rains helped the coffee plant thrive in its new environment. Soon enough coffee caught on in Kona, and its distinguished flavor became known throughout the world. In July of 1866 Mark Twain stated, in his "Letters From Hawaii", "Kona coffee has a richer flavor than any other, be it grown where it may and call it by what name you please."

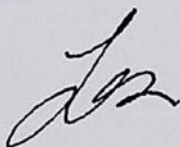
It was not until the late 1800's, the period following the California gold rush, that the coffee industry in Kona saw its first boom. In 1898 the Kona hillsides were consumed by coffee trees; over three million of them spread out over six thousand acres.

In the late 1800's and early 1900's the initial steps involved with processing the coffee were in most cases undertaken by the independent farmers themselves. This involved hand-powered pulpers, a sixteen hour soaking period and drying the beans under "false" pitched roofs that rolled back to receive the warm sunlight. Local mills in Kona then removed the final parchment membranes and loaded the grated beans into sacks before being carried down the mountain in mule powered freight wagons. The last leg of the journey began at either Kailua or Napoopoo piers where the coffee was shuttled by boats out to waiting steamships bound for San Francisco.

Today, very little has changed from the coffee culture in Kona as many of its farms continue to be owned and operated by independent families. There are now mills in the area that fully process the raw coffee cherries for brew guaranteeing that the hand picked beans get the full flavored roast they deserve, right here in Kona, Hawaii.

All of our beans at Coffee Times are hand picked, sun dried and undergo stringent grading standards to uphold the gourmet reputation and quality in every cup of coffee. And, unlike some of our competitors we only roast to order, so if it's freshness you seek it's freshness you will receive.

The true taste of 100% pure Kona Coffee now awaits you, so from my Coffee Times to your coffee times enjoy Kona's very best.



Les Drent

Coffee Times



Fresh Roasted 100% PURE KONA COFFEE

100% PURE KONA PEABERRY

Peaberry Kona coffee offers connoisseurs one of the finest and perhaps rarest coffee beans in the world. Only an estimated 4 percent of the annual Kona coffee harvest yields a Peaberry grade of coffee. Peaberry occurs when a coffee tree is stressed in its growing environment, resulting in an individual coffee cherry producing only one round and very dense bean rather than the usual two beans. The taste of Peaberry in the cup is simply exquisite.

20.95/lb. 99.95/5 lbs. 189.95/10 lbs.

100% PURE KONA FANCY

After many years of roasting, sampling and selling many different grades of 100% Pure Kona coffee the Fancy grade of Kona has proven itself time and time again to yield the finest and most consistent cup of coffee. Its clean grade, density, size, and aroma have set it apart from other Kona grades. Considered by many to be the best whole bean coffee available in Kona.

19.95/lb. 94.95/5 lbs. 179.95/10 lbs.

100% KAUAI COFFEE

11.95/lb.

(please specify medium, or dark roast with each coffee ordered)

Every pound of coffee you buy from us is roasted only to order.

CALL 1-800-750-KONA

Coffee Times



ORDER BY MAIL

Type	Roast	Lbs.	Price
_____	_____	_____	\$ _____
_____	_____	_____	\$ _____
_____	_____	_____	\$ _____
_____	_____	_____	\$ _____

**SATISFACTION
GUARANTEED**

Delivery Charges \$ _____

In U.S. please add \$3.50 for 1st pound and \$1.50 for each additional pound
(Call for international shipping fees)

GRAND TOTAL \$ _____

Please mail with check or money order to:
Coffee Times, P.O. Box 1092, Captain Cook, HI 96704

Pay by Credit Card



Cards

(MC) (VISA) (AM EX)#: _____ Exp. Date: ____ / ____
circle one

Name: _____ Signature: _____

Optional Billing Address: _____

Ship To: _____

Gift Note: _____

Please allow 3-7 DAYS for U.S. PRIORITY MAIL DELIVERY



Ka'u Region

South Point Hawaii: Land of Discovery

KIRK AEDER

A sailing canoe gliding over the ocean off South Point, probably the first place Polynesians set foot in Hawaii.

The actual place where Polynesians landed will always remain a mystery, but it was likely some where near the southern tip of the Big Island. This area seems like a probable place because their approach would have been from the south, where all of Polynesia lay. When sailing north, the Big Island would be the first island they would have seen, and South Point would have been the nearest landfall. Aside from the logic of such a choice, there is archaeological evidence supporting the supposition of a landing near **Ka Lae**, as the Hawaiians call the most southern tip of the island of Hawaii. Excavation of lava tubes, that were used as shelters, near Kailikii and Waiahukuni, villages four miles northwest of the Ka Lae, indicate people were using them by A.D.750. There is other evidence that indicates people first were in the area as early as A.D. 200.

The cliff near South Point Park is a

common mooring place for the modern day fishermen who find these waters a rich resource. From the precipice the drop is about forty feet to the ocean's surface, but the cliff base goes down another thirty feet below the surface of the water. Ladders, hung to make access to the boats easier, swing freely in the air just above the sea. The cliff is deeply undercut. In the heat of the day the water looks inviting. It is so clear the bottom can be seen plainly. For some there might be a temptation to leap into the cool water, and climb back up the ladder. It looks inviting, but don't do it. A swift current runs along the shore. The flow will carry anyone in the water straight out to sea. It is called the Halaea Current, named for a chief who was carried off to his death.

One of South Point's most famous scenic spots is **Mahana Beach**, also called Green Sands Beach because it has a distinctive golden

Places of Interest

At **Naalehu Fruit Stand**, owners John and Dorene Santangelo prepare homemade specialties daily. Take your meal on the road or take a picnic table seat on their front porch as you watch travelers on their way to Volcano pass by. While you're enjoying your lunch or a piece of local fruit pick up a copy of **Ka'u Landing**, the Big Island's alternative newspaper. Inside you will find interesting local news stories and the month's happenings around the island.



green color. Although none of the fragments in the sand are large enough for jewelry purposes, the beach is composed chiefly of peridot, a semiprecious gemstone. These tiny green gems are a silicate, one of the many families of quartz, which cook out of the basaltic magma over time. (They are apparent as green flecks in the raw lava stones used to build the columns and walls of the Jagger Museum at Kilauea's Volcano National Park.) As lava reached the coast, erosional forces, and the specific gravity of the stones, perhaps are responsible for the accumulation of such a large quantity of the granules that produced the green sand beach.

Up the coast from South Point's main hub of activity, **Naalehu town**, and heading towards Volcanoes National Park you will pass by **Punalu'u black sand beach** and later a

sign marking a road to **Pahala**. The short drive to Pahala is worth the excursion. In it are an actively working **sugar mill** and the not so active remains of the old **Pahala Theater**. Take time to drive into the lush tropical **Wood Valley** and past a **Buddhist temple**. Ask for specific directions to those sights at the local general supermarket, there is only one. South Point is a little more than an hour's drive from either Hilo or Kona.

Hawai'i Island's Uncommon News Magazine

KA'U LANDING



In-depth and ongoing coverage of the land, the people and the issues that affect the present and the future of our Big Island Communities

1 year (12 issues) \$18 Sample Copy \$2.00

P.O. Box 7179, Ocean View, Hawai'i 96737
(808) 928-6119



**Naalehu
Fruit Stand**

Try Our
Macadamia Nut Pie!

Southernmost point in U.S.A.

"A stop in good taste"

Tropical Fruit Breads • Cookies • Pies
• Giant Sub Sandwiches •
Pizzas • Garden Burgers • Hot Soups •
Fresh Salads • Fresh Juices

It's the perfect rest stop on the way to Volcano!
Sundry and Souvenir items available
Free souvenir with purchase
P.O. Box 31 Naalehu, HI 96722 (808) 929-9009



**Open Daily
at 9 am
on Hwy 11**

VOLCANO • HAWAII



KIKI AEDER

Above photo of Pu'u'u'O'o vent, the current sight of volcanic activity on the Big Island. Facing page photo is of the Hawaiian goose, the nene.

Volcanoes National Park has one entrance, off Route 11, 30 miles south from Hilo or 95 miles east from Kona. The park is open 24 hours a day all year round and requires a \$5.00 entrance fee per vehicle which is valid for 7 consecutive days. The hiker/bicyclist/bus passenger fee for people over 16 and under 62 is \$3.00. When you enter the park during daytime hours you will receive a park brochure at the entrance station. If you enter the park after hours you may pick up the brochure at the **Kilauea Visitor Center** which is located a quarter mile from the entrance on **Crater Rim Drive**. The visitor center is open from 7:45 a.m. to 5:00 p.m. daily. Visitors are encouraged to take the time to carefully read the park regulations and guidelines. The volcano fumes that

exist in the park may create a health hazard for pregnant women, infants and people with heart or respiratory problems. People at risk should avoid stopping at the Sulphur Banks, Halema'uma'u Crater and other areas where volcanic fumes are present.

Overnight trips in the park require a backcountry permit that can be obtained at no charge at the Kilauea Visitor Center. Once inside the park enjoy the 25-minute movie on eruptions shown hourly at the visitor's center. Other attractions are the **Thomas A. Jaggar Museum** three miles inside the park along Crater Rim Drive, **The Volcano House**, **Thurston Lava Tube** and **scenic vistas**. Depending on the timing of your visit **you might have a chance to see the volcano erupting**. A 45 minute drive

Places of Interest

Lodging, gas, camping supplies and dining all can be found in Volcano Village just a short drive from the park. Because of the remote loca-



tion of Volcano, the numerous Bed & Breakfasts existing in the region are a popular choice among visitors seeking lodging in this region. **Chalet Kilauea, The Inn at Volcano**, features rooms decorated with art from around the world and even a treehouse suite, a unique alternative for couples looking for that romantic getaway. Chalet Kilauea has also just finished the remodeling of their exclusive treehouse suite complete with marble bathroom, double Jacuzzi tub, fireplace, private covered deck and an upstairs bedroom, connected via a spiral staircase. Located off of Hwy. 11 are the private **Hale Ohia Cottages** surrounded by bonsai-style gardens and moss covered grounds. The suites and cottages are both spacious and comfortably outfitted. Also featured at Hale Ohia are two very private romantic cottages outfitted with fireplaces. Perhaps one of the most memorable dining experiences on the Big Island can be found at **Kilauea Lodge**, which features continental cuisine beside the historic Fireplace of Friendship. The mountain lodge also hosts thirteen romantic rooms for overnight visitors.



any closed areas! The park also offers many other hiking opportunities which are mapped out in the park brochure.

A reminder to drive slowly and carefully while touring the park as it will help to protect Hawaii's endangered state bird, the nene.

FOR SPECIFIC PARK INFORMATION

to the end of Chain of Craters Road and a short hike will get you to the most recent lava flow area. The new coastline is unstable and can collapse into the sea at anytime without warning. Obey all park signs. Do not enter

Call Volcanoes National Park at
(808) 967-7311

Or
For an Eruption Update
(808) 967-7977

*Romantic Rooms and Cottages
Fabulous Fireside Dining Nightly
5:30 - 9:00 p.m.*



KILAUEA LODGE

*...only minutes from Volcanoes
National Park*

**VOLCANO VILLAGE
HAWAII ISLAND ~ (808) 967-7366**



**HALE OHIA
COTTAGES**

"A Bed & Breakfast without all the goo."

-TRAVEL & LEISURE, JAN. '96

**Volcano Village, Hawai'i • (808) 967-7986
1-800-455-3803**

For those who deserve the best...

Introducing 3 Special Lodging Options in Volcano Village

On-Island 967-7244 / Off-Island: 1-800-736-7140

Chalet Kilauea - The Inn at Volcano

From: \$125 / 967-7786



This enchanting vision, created by owners Brian and Lisha Crawford, is among the most beautiful on the island. Quaint and endearing, the blend of radiant decor and glowing hospitality is made all the more special by such touches as two-course gourmet breakfasts and in-room whirlpools. From gracious welcome to cheerful farewell, the level of service is indulgent and discreet, charming and detailed. "Luxury is and art, and Chalet Kilauea is an artwork, indeed!"



The Lodge at Volcano - everything but expensive

From: \$85 / 967-8216



In the heart of 30 acres, amid a tropical landscape of private hiking trails, stands the Lodge at Volcano, an elegant reminder of the art of gracious travel. Guests enjoy a splendid ambience of comfort, detail and extravagance in one superb, relaxing package. Dipping in the huge whirlpool, quiet strolls at sunset, and evenings of chat amid the ferns and flowers soothe the traveler's heart.



Volcano Bed and Breakfast - Volcano's best value

From: \$45 / 967-7779



In the village of Volcano, amid a landscape sculpted by the powers of the earth, Volcano Bed & Breakfast welcomes the curious traveler. It offers, as one guest put it, "The comforts of home amid the wild unknown." There are six charming, affordable rooms for those who like to stretch their budget to fit their horizons. Swap stories with fellow guests around the fire, sleep tight, then enjoy a complimentary breakfast. The owners say, "if home is where the heart is, our heart is open to you!"





A C T I V I T I E S

Fine Dining

Award-winning Donatoni's for the best in Northern Italian cuisine or choose Imari for discriminating Japanese foods, Kamuela Provision Company for fresh island fish and Certified Black Angus Beef. For casual dining, select from themed buffets at Palm Terrace, poolside breakfast and lunch at Orchid Cafe or lagoon-side at Hang Ten.

Call 885-1234, ext. 54.

Kohala Spa

Offering the best in time-honored treatments for mind and body. Relax with an aromatherapy massage or a seaweed body masque. Enjoy state-of-the-art exercise equipment, a full-service beauty salon and luxurious locker facilities with sauna, steam, and outdoor whirlpool.

Call 885-1234, ext. 1260.

Kohala Tennis

6 plexi-cushion courts or 2 fast-dry clay courts. Private lessons, ball machine, pro-shop and match arrangements available.

Call 885-1234, ext. 1293.

JUNE

On The Island of Hawaii and in Hawaiian History

JUNE 1, 1997

Old Hawaii on Horseback, Waimea. Contact Waimea Main Street at 885-6707.

JUNE 3, 1906

1st automobile traffic fatality in Hawaii.

JUNE 4, 1997

Enhancing History Lecture Series on Hawaiian history, flora and fauna, interesting tidbits on indigenous animals. Pu'uhonua O Honaunau, National Park. FREE Contact Blossom Sapp at 328-2326.

JUNE 4, 1850

Bernice Pauahi and Charles Bishop are married.

JUNE 4, 1976

Hokule'a arrives in Tahiti. 1st voyage.

JUNE 5, 1832

Ka'ahumanu dies Kuhina Nui and wife of Kamehameha I.

JUNE 6, 1825

Kauike'aouli named Kamehameha III, with Ka'ahumanu as Kuhina Nui.

JUNE 6, 1980

Hokule'a returns from Tahiti, 2nd trip.

JUNE 7, 1839

Declaration of rights drafted by William Richards.

JUNE 7, 1845

Kekaulu'ohi dies, Kuhina Nui and mother of Liholiho.

JUNE 8, 1804

Imperial Russian ships arrive on islands.

JUNE 8, 1831

4th company of missionaries arrive.

JUNE 10, 1845

Keoni'ana (John Young) becomes Kuhina Nui until 15 January, 1855.

JUNE 11, 1997

Kamehameha Day Celebration at Mo'okini Heiau. Early morning ceremony and tours. Call Leimomi Mo'okini Lum at 591-1170.

JUNE 11, 1872

Henry Berger, conductor of Royal Hawaiian Band, gives 1st concert.

JUNE 11, 1877

Kapi'olani Park is opened.

JUNE 13, 1855

Bernice Pauahi's father, Abner Paki, dies.

JUNE 13, 1884

Smooth cayenne pineapple is introduced from Madeira.

JUNE 14, 1852

Constitution by Kamehameha III replaces 1840 Constitution.

JUNE 14, 1900

Territory established with Sanford Dole as 1st Governor.

JUNE 15, 1890

Queen gives residence and land to house Kapi'olani Maternity Home.

JUNE 17, 1826

Pauahi dies grand daughter of Kamehameha I, following birth of Ruth Ke'elikalani.

JUNE 21, 1886

Iolani Palace Square is illuminated with electric light bulbs.

JUNE 24, 1868

1st 148 laborers arrive from Japan.

JUNE 24, 1899

Queen Kapi'olani II dies.

JUNE 27-29, 1997

Pu'uhonua O Honaunau Annual Cultural Festival. Visitors can see demonstrations on poi-pounding, coconut frond and lauhala weaving, the making of leis, tapa (bark cloth) and toys, as well as learn Hawaiian words, hula and games. Take a canoe ride or join in the hukilau. 10am to 3pm. FREE Contact Blossom Sapp at 328-2288.

JUNE 29, 1927

1st plane to fly from mainland to Hawai'i lands at Wheeler Field, O'ahu.

All Month...

Mauna Kea Visitor Programs

Every Saturday and Sunday a Mauna Kea summit tour begins at 2:30pm. Participants should stop at the Visitor Information Station at least 45 minutes before the tour. Children under 16 not permitted due to health hazards from high altitude. 7-10pm every Friday and Saturday night the Visitor's Information Station presents an audio-visual or lecture and stargazing with an 11-inch Celestron telescope. Children encouraged to participate. Call (808) 961-2180. Free.

After Dark in the Park

Hawaii Volcanoes National Park presents its series of free programs in the Kilauea Visitor Center Auditorium at 7pm several nights per month. The series features cultural, geological, biological and historical presentations. Call 967-7184 for detailed monthly program information.

Historic Kailua Village Walking Tour

Presented by the Kona Historical Society tour the historic sites on alii drive including Hulihee Palace, Mokuaikaia Church and Ahu'ena Heiau. Learn about the significance of each site and what life was like in the early days of Kailua-Kona. Guided tours are given Tuesday through Saturday at 9:30am and Friday at 9:30am and 1:30pm. For reservations call 323-2005.

Seeds of Beauty

by Betty Fullard-Leo

Scholars theorize that of the twenty-seven plants thought to have been brought to the Islands by the first Polynesian explorers, only two—kamani and kukui—bore seeds with a hard enough shell to be used in seed craft. Of necessity, kukui nuts were first burned as a source of light, used as a dye for designs on kapa, canoes and tattoos, and a seasoning for food, and only when nuts and time permitted, were they strung for personal adornment. Kamani, a large, perfectly round brown nut, also may have been worn in leis, wristlets and anklets by early Hawaiians. According to Big Islander Marie MacDonald in her book, *Ka Lei*, “More lei hua or Lei’ano’ano, seed necklaces, were made as new plants with tough-shelled seeds were introduced and became common (after Western contact).”

The introduction of the electric light in Hawai‘i probably allowed the kukui to be used more extensively in leis. In recent times, writes MacDonald, “The steel-tipped drill and especially the electric drill have made seed lei making a popular pastime.”

Though seed craft has evolved to an art form over the last decade or two, paralleling a renaissance of all Hawaiian arts and crafts, it has a definite history in the Islands. Big Island-born crafter, Hanai Hayashida says, “I’ve seen pieces (leis) more than 100 years old. They just turn a darker color—darker brown for wiliwili. All you have to do is restring them and they can be worn again.”

Before she made seed leis, Hayashida learned to make floral leis from her mother when they lived on the Big Island’s Parker Ranch. Hayasida says, “My hobby was to find leis our tutus used to wear and try to duplicate them. Seeds were done in so many different colors and patterns, they sparked my imagination.”

A skilled crocheter now living on Oahu, Hayashida began to experiment with stringing seeds and then attaching the strand onto itself in a circular pattern using a crochet hook. She explains, “I adapted the American way of crocheting pearls that was popular with crafts people at that time (in the 1960s).” Sometimes she combined glossy bright red or brown wiliwili, or gray-green Kakalaio‘a, commonly called Hawaiian pearls, with perfect little sea shells for a pleasing



BETTY FULLARD-LEO



contrast in colors and textures. It was the first time the crochet method had been used for the Hawaiian craft, though other methods of seed lei making—stringing on single strands, or tying multiple strands together to make designs—had long existed. A spiral pattern of seeds similar to the crocheted method also can be achieved by stringing a single strand of seeds and wrapping it around a central cord.

Hayashida teaches the members of Chinky Mahoe's hula halau to make seed leis to wear during performances. Halau members teach friends and family, and they sell their work to raise funds for travel, costumes and other expenses involved in hula competitions such as the prestigious Merrie Monarch held annually in Hilo. Ipolani Vaughn took classes from

Hayashida because her daughter was taking hula and needed seed leis for her dance costume. In turn, Vaughn taught her friends: Big Islander Tuti Kanehele and Oahuan Bill Char. Vaughn and Char often work with small wili wili seeds; 300 of the beige, black, red and orange seeds are needed for a single spiral lei. Like most seed crafters, they don't make seed leis with get-rich-quick expectations, as too much time-consuming work is involved. Vaughn says laughingly, "The Lord gave us all these wonderful things to work with, but he certainly didn't make it easy."

When Vaughn taught Big Island seed crafter Tuti Kanehele crochet techniques, Kanehele was already familiar with the popular tied method. Originally from Niihau, she

had learned the tied method by stringing the treasured Niihau shell leis. In the simplest tied method, which can be adapted to seed leis, two strands of sugi (fishing line) are knotted together in the middle. Holes are drilled in each seed through the piko, the point at which the seed was attached to the pod, on one side and angled to emerge at the top. A seed is strung on each of two opposing lines; the lines are drawn together and knotted. Then seeds are strung on the opposite two lines, and these are drawn together and knotted. The pattern is repeated until a tied necklace of four strands or more, which look woven together, reaches the proper length.

Most crafters have favorite seeds to work with, occasionally experimenting with new seeds when they find something that strikes them as interesting. Wiliwili is popular because it can be found in abundance on all Islands in a variety of colors and it has a glossy finish that requires little cleaning. The red-orange wiliwili is endemic to Hawai'i. Orange wiliwili grows on Moloka'i. Beige seeds only grow two or three in each pod and they thrive on Kaua'i, and burgundy wiliwili have eight or nine seeds in a pod and grow on Oahu.

Some seeds are tiny, like the ali'i poe, which resembles a pepper pod, and the black-eyed Susan, a bright red, round seed with one dark spot. Palm seeds require a great deal of work to string, as they need to be dried, husked, filed, sanded and polished. Of the palms, the monkey nut and the Manila nut are commonly used in seed leis. Another palm, the coconut, might be cut into pieces, drilled and linked together with cord, wire or ribbon. Seeds like the small, black manele, or soapberry, and the brown skunk seed, or peka'a, commonly called burn beads, have a natural luster and need only be cleaned and drilled before stringing. Two of the easiest seeds to string are the pu'ohē'ohē, or Job's tears, which have a natural opening, and the brown ekoa, or haole koa seed, which can be boiled until soft and then pierced with a sharp needle for stringing.

Some seeds, like kamani nuts, grow in abundance, while others are unusual and only occasionally found in leis. The 'elepani, or elephant, is an oval brown seed, about the size of a bean with



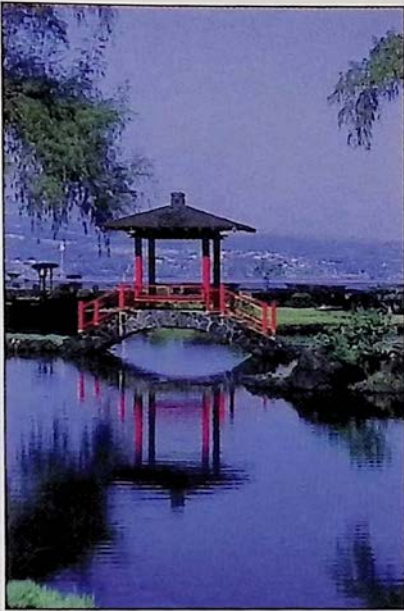
Gathering materials like flowers and seeds for lei making. *print by Marie McDonald*



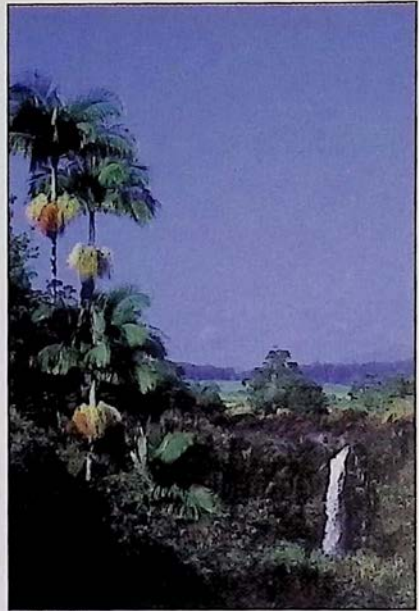
EAST HAWAII

AND OLD TOWN HILO

LAND OF CASCADING WATERFALLS, RIVERS AND BRIDGES TO THE PAST



KIRK AEDER



KIRK AEDER

When you talk about the old Hawaii, at least the one that hasn't been touched as much today by the long arms of commercialization and development, you cannot help but mention the East Coast on the Big Island. At the center of all this is old town **Hilo**. Hawaii's second largest city is seeing a revitalization of spirit thanks to the effort of the Downtown Hilo Organization who is busy restoring and preserving the storefronts of this yesterday town. Aiding this effort are the wealth of new businesses occupying Hilo's old buildings.

Adding to this old Hawaii feeling is the daily **Suisan Fish Market Auction** and the **Hilo Farmer's Market** which is held every Wednesday and Saturday in Downtown Hilo. Refer to the downtown Hilo map on page 22 for an interesting hike around some of the city's historic buildings and structures. It's fun to think about what the town was actually like around the early 1900's.

An easy to find waterfall is **Rainbow Falls** which is located inland along the **Wailuku River** at the north end of town. Follow the road running alongside the river to the Park where you won't have



KIRK AEDER

Photos on opposite page are of a walking bridge in Liliuokalani Gardens located near Banyan Drive in Hilo and a waterfall along the East Hawaii coast. Saint Joseph's Catholic Church in downtown Hilo is pictured above. Facing page are koa bracelets at the Hilo farmer's market.

to walk far to see one of the area's most frequented sights. If you're lucky you will catch sight of a rainbow at the falls.

After leaving Hilo you don't want to miss the drive north to Waipio Valley which takes you over scenic gorges that were once crossed by cane hauling trains in the heyday of sugar cane production. The plummeting waterfalls and river mouths under the extensive bridge systems leading north up the Hilo Coast are definitely an

awesome sight. On this drive north is **Onomea Bay** located along a 4 mile coastal scenic route. The lush ravines and botanical gardens are brilliantly picturesque along this coastal road and is well worth the detour.

Akaka Falls State Park and the village of **Honomu** can be reached by taking Hwy. 220 off of the main route, Hwy. 19 north. Once you reach the Park a short paved hike will take you past a



Specializing in First Time Home Buyers. Closed over two million dollars of sales for both 1995-1996.

Mention
this ad for a
FREE GIFT

SAVIO REALTY, LTD. **Better Homes and Gardens**[®]

HEATHER E. HEDENSCHAU
REALTOR/GRI For Acreage & Residential Sales

162 Kinoole Street, Suite 201, Hilo, HI 96720
Res: (808) 965-9605 Bus: (808) 934-7300

Places of Interest

A great place to start your tour of Hilo is at **Mauna Kea Galleries**, located at 276 Keawe Street in the old Court Mauna Kea Building. The gallery hosts many vintage Hawaiian and Polynesian



paintings, artifacts and ephemera and is open daily. See their ad on page 3. Up the coast in the town of Honomu and near Akaka Falls is **Akaka Falls Inn & Gift Gallery** located in the restored 1920's Akita Store building. Hawaiian crafts and gifts are just a few of the locally made items guests will find in the gallery. Also featured are original works of art and prints by Island artists. In addition to the gift gallery is a deli that will prepare a picnic lunch for your trip to Akaka Falls. Food items include sandwiches, pastries, cold drinks and coffee. If you are looking for overnight accommodations the gallery will also open its new B&B on May 1st. When you are done sight seeing the best lodging around Hilo can be found at the magnificent and luxurious **Hale Kai Bed and Breakfast**, located on the bluff above the ocean overlooking Hilo's premier surf spot, Honolii. Expect nothing less than gourmet island breakfasts and plenty of privacy. Hale Kai also has available a private cottage facing a pool and ocean. The owners, Evonne and Paul Bjornen are knowledgeable hosts and are always willing to lend a personal travel tip to their guests. After touring the area, you may find yourselves in love with Hawaii and you may want to acquire your own piece of paradise. Contact **Heather E. Hedenschau (R)** of **Savio Realty Ltd. Better Homes Gardens**. It might surprise you just how reasonable property in East Hawaii can be!



KIRK AEDER

network of smaller waterfalls and colorful tropical foliage to the plummeting Akaka Falls. Its accessibility and grand size make Akaka Falls a popular stop along this eastern coast. The historic town of Honomu boasts many old storefronts from the days when sugar was king. The drive and hike to Akaka Falls will only take you out of the way for an hour but you might just find

yourself passing more time over an ice cream and a pleasant cool breeze in the quiet town of Honomu.



Akaka Falls Inn & Gift Gallery

P.O. Box 190, Honomu, Hawaii 96728-0190
(808) 963-5468

28-1676 Mainstreet Honomu
Gift & Art Gallery • Deli • Picnic Lunches
call ahead to order your picnic lunch

IN HILO

2 BD
2 1/2 Bath
Condo
also
available

Hale Kai Bed & Breakfast Bjornen

Double
occupancy
is \$85
and up

★ ★ ★ ★ AAA approved

A 4 Star Bed & Breakfast on the bluff facing the ocean and overlooking Hilo Bay and Honolii surfing beach
VERY PRIVATE, POOL, HOT TUB, BREAKFAST,
Kona Coffee, Private Baths, Well Decorated Rooms
111 Honolii Pali, Hilo, HI 96720

Ph. (808) 935-6330 / Fax 935-8439

Pahoa-Puna

a town of quaint shops, local food, arts, crafts, and theater surrounded by a countryside filled with natural treasures.



PHOTO COURTESY CITIZENS OF PAHOA

Downtown Pahoa during the 1920's. Today the town still retains the same look but with a new group of businesses. One of the favorite small towns to visit on the Big Island.

For visitors who want to experience the true feeling of old Hawaii, **Pahoa village** holds the key to this untouched past. First a rugged sawmill town then a sugar town and also a crossroad on the old railroad, Main Street Pahoa has maintained its western style storefronts and wood boardwalks in a charming turn of the century Victorian style.

Quaint shops from surf, to curio and restaurants that span the flavors of the globe from Thailand, to Mexico, and Italy, make Pahoa Village one of the most pleasurable shopping

and dining stops on the Big Island. Every restaurant in Pahoa is owner operated, guaranteeing diners the best in food preparation. Lodging in Pahoa is alternative as well. The historic Village Inn, built in 1910, housed some of Puna's earliest travellers and still operates today. The rooms are clean and spacious with vintage victorian decor. Call ahead to any of the friendly shops to learn of any special events scheduled during your visit. Pahoa has the reputation of holding some lively and entertaining performances both on its Main Street and at the **Akebono**

Places of Interest

One of the nicest things about dining out in Pahoia is that you are guaranteed to get an authentic plate of food at most of its restaurants. At



the **Godmother Italian Restaurant** New York native and owner Liz Cestare has brought not only the taste of rich pasta but a little Big Apple character to this little Hawaiian village. At **Nuang Mai Thai Kitchen** diners have the opportunity to experience the flavors of the far east by another transplanted native. Owner and chef Alisa Wade, born and raised on a farm in northern Thailand has created the venue for what this publisher regards as the best tasting and best priced Thai-food on the island. If you wish to experience yet another international style of cuisine why not try **Luquin's Mexican Restaurant**, the busiest and most popular local dining spot. A full bar, fast service, and a lively atmosphere are all guaranteed by Salvador Luquin, owner, chef and former Mexico native. The great food at Luquin's is also very reasonably priced.

Theater, Hawaii's oldest theater.

The countryside surrounding Pahoia is filled with natural wonders

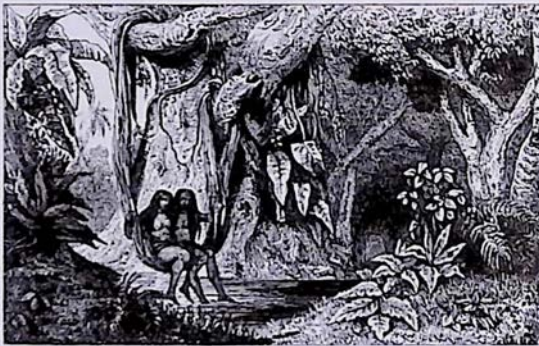
like the **Lava Tree State Park**, steam vents, groves of papaya trees and black sand beaches along the rugged Puna coast.

From the bays at **Isaac Hale Beach Park** to

the area of Puna once known as **Kalapana** the coastal road, **Route 137**, winds through untouched pine forests, open pastures and dense tropical

foliage. While traveling on 137 you will also pass seaside pools and quiet fishing spots perfect for picnicing or a

relaxing snooze. It's no wonder that many tour guides around the Big Island tout Puna as the most scenic and rural area of the Big



Island. Visitors are warned however that a prolonged stay in this Aloha time capsule may make leaving a very difficult task.

Naung Mai

Thai Kitchen

"We serve Cheng Mai, Bangkok & Phuket style cuisine."

Vegetarian Entrees offered

Located in downtown Pahoia
Sat - Mon 4:30 - 8:30pm
Tue - Fri 2 - 8:30pm

965-8186



The Godmother

965-0055

Breakfast: 8-11am,
Lunch: 11am-3pm,
Dinner: 5-Closing

EVERYTHING
HOMEMADE

Delicious authentic
New York-style Italian cuisine
Pahoia Village

LUQUIN'S

MEXICAN RESTAURANT

Chili Relleno, Carnitas,
Tamales & Taquitos,
Margaritas, Beer, Wine

FREE CHIPS
& SALSA
with Dinner

OPEN DAILY
11 a.m. to 9 p.m.

965-9990

THE VILLAGE INN

HISTORIC PAHOA
BUILT IN 1910
P.O. BOX 1987
PAHOA HAWAII 96778

LODGING
& HAWAIIANA
CURIO SHOP

\$39.95
double & up
965-6444

Big Island Lodging Guide

The next few pages is a regional listing of Bed & Breakfasts, Inns, and Vacation Rentals around the island of Hawaii. You are sure to enjoy their hospitality and Aloha.

1. Suds' Acres Innkeepers: Anita & Oliver
Suds, P.O. Box 277, Paauilo, HI 96776
Ph/Fax: 808-776-1611, 1-800-735-3262 e-mail: aphesis@interpac.net

Situated on our Macadamia Nut farm on the slopes of Mauna Kea at 1800' elevation, your choice of the privacy of our cozy rustic cottage w/ complete kitchen or accomodations in our main house, each unit with color TV, microwave, coffee pots and one is wheelchair accessible. A continental breakfast provided for you to enjoy at your leisure. 5 miles to Honokaa, 15 to Golf, 30 to Hawaii's best beaches, 40 miles to Hilo, 60 to Kona. \$65 dbl.



2. Hale Kai B&B Innkeepers: Evonne & Paul Bjornen, 111 Honolii 6330 Fax (808) 935-8439

This AAA approved 4 star B&B overlooks beautiful Honolii surfing beach and Hilo Bay. All private baths, cable TV, ocean front views, pool & hot tub, full breakfast-quiet area. Guests treated as family. 100% Kona coffee served. Chosen among top 100 B&B's in USA and Canada. Rates: \$85



and up dbl. occupancy. 2 miles from Hilo. Also available is an ocean front 2 bedroom 2 1/2 bath deluxe penthouse. \$2,000/month.



3. Wild Ginger Inn 100 Pueo St., Hilo, HI 96720 Ph: (808) 935-5556, 1-800-882-1887

Conveniently located across the Wailuku River from Historic Downtown Hilo. Beautiful view of Hilo Bay with bamboo-jungle

stream area and large garden yard. All rooms in this old Plantation style building are clean with private restrooms, shower, and refrigerator. Standard rooms cost \$39-\$44, and include Hawaiian style buffet breakfast. Ask about our deluxe rooms and extended stay discounts.



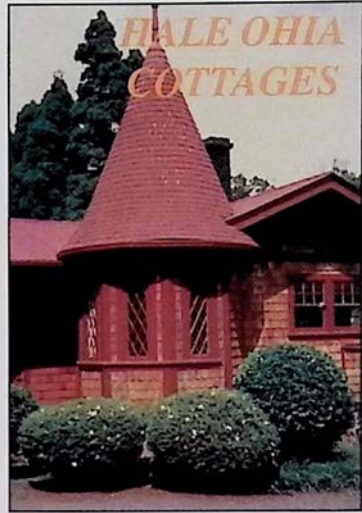
4. Merryman's B&B P.O. Box 474, Kealahou, HI 96750 Ph: (808) 323-2276 1-800-545-4390

Charming ocean view B&B in Kealahou, minutes from the best snorkeling. Enjoy immaculate, spacious rooms furnished w/ antiques & fresh flowers. A delightful Hawaiian breakfast of fresh fruits, chef's special & Kona coffee is served each morning. Snorkel gear & beach supplies provided.

5. Carson's Volcano Cottage Innkeepers: Tom & Brenda Carson, P.O. Box 503, Volcano, HI 96785 Ph: (808) 967-7683 1-800-845-LAVA, Fax: (808) 967-8094 email: carsons@aloha.net <http://www.carsonscottage.com>

Explore Hawaii's Volcano Natl. Park & stay in a fairy land forest of giant tree ferns & flowers. Private Romantic Cottages & Guest Rooms decorated with our collectables and antiques. • Woodburning stoves • Private Hot Tubs • Hearty Breakfast • Family Vacation Homes • Amenities without the price \$70 - \$145. Experience the true fantasy of Hawaii.

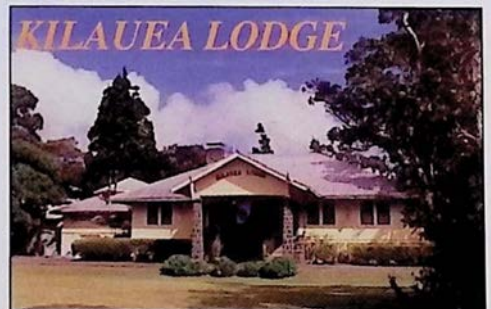
6. Hale Ohia Cottages Innkeeper: Michael Tuttle, Box 758, Volcano, HI 96785 Ph: (808) 967-7986, 1-800-455-3803

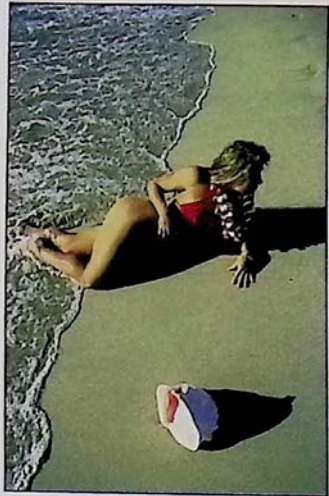


Noted in the NEW YORK TIMES, the SO-PHISTICATED TRAVELER, historic hide-away, unique architecture, garden setting, fireplaces, heated Japanese Furo, breakfast brought to your room. All accommodations have private baths. One mile from Natl. Pk., Rates: \$75 to \$95.

7. Kilauea Lodge Innkeepers: Lorna & Albert Jeyte, P.O. Box 116, Volcano, HI 96785. Ph: (808) 967-7366 Fax: (808) 967-7367

Popular mountain lodge and restaurant set on ten acres of forest and formal gardens. Romantic rooms and cottages with private baths, central heat for the cool mountain evenings, many with fireplaces. Common room with VCR, library and games. Original art. Full breakfast included. Fabulous fireside dining nightly.





Soft Sands of Hapuna Beach

KIRK AEDER

Fresh Produce of Hamakua



KIRK AEDER

Hilo's Palace Theater



KIRK AEDER

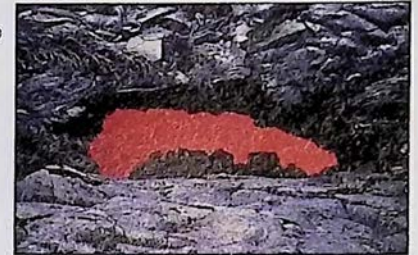
A

W

A



Hot Lava



KIRK AEDER

H

A

L

Kona Coffee Cherries



KIRK AEDER

O

H

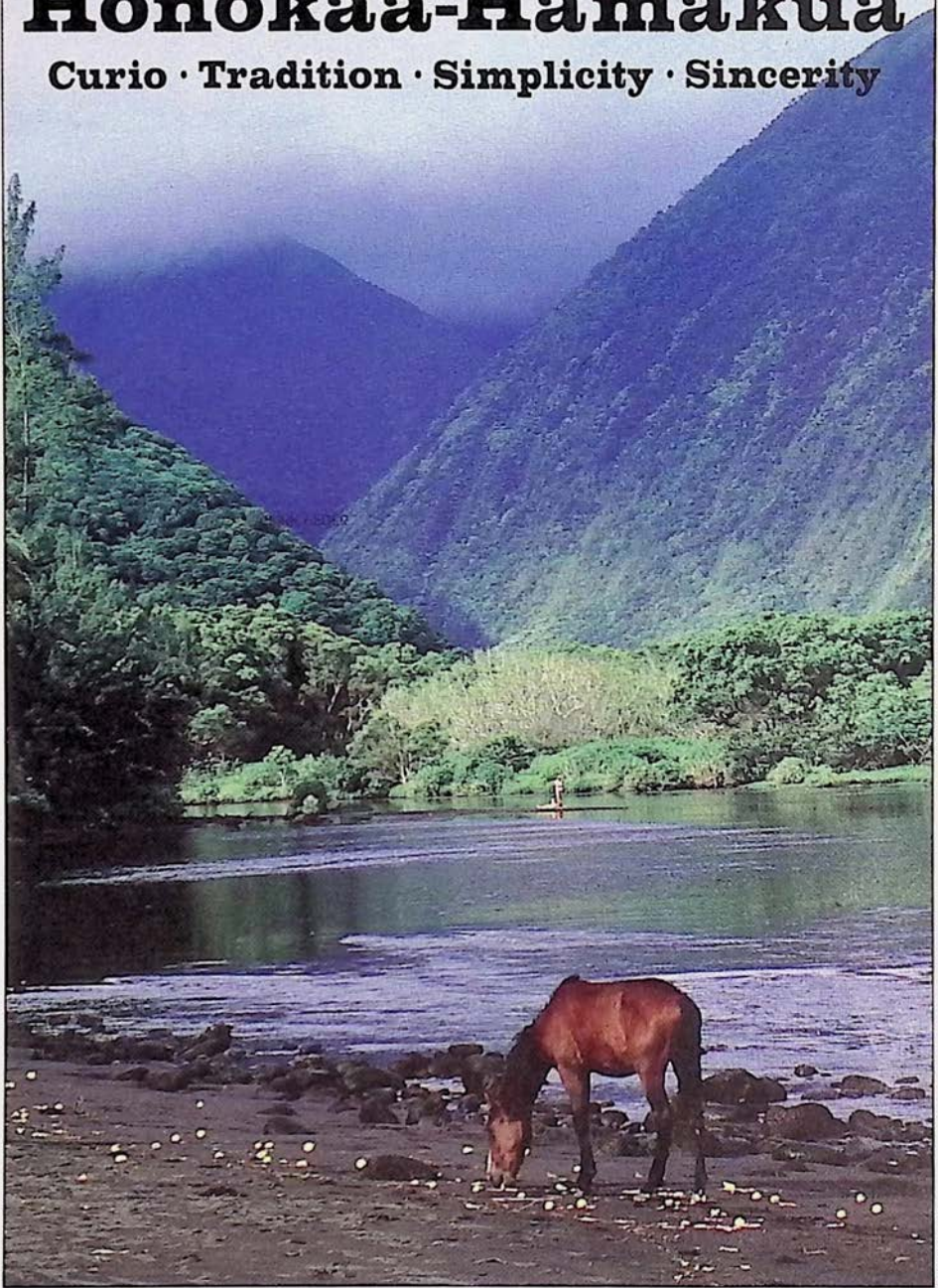
A

South Point Wave



KIRK AEDER

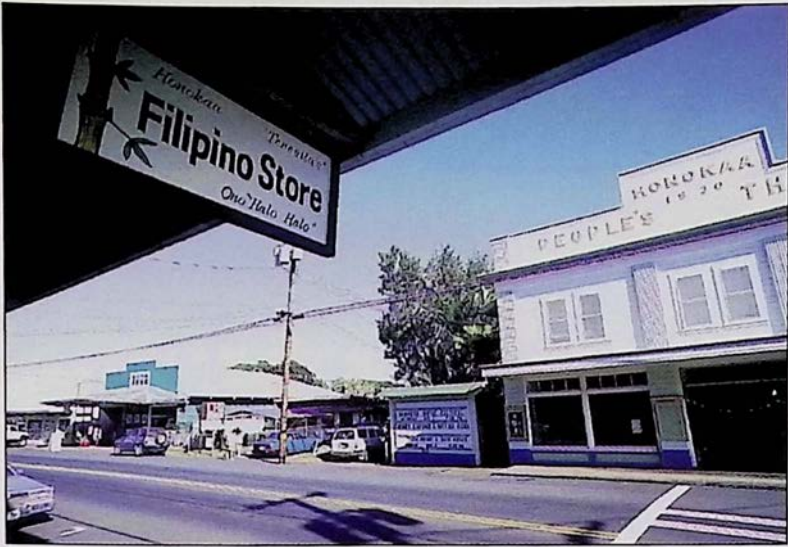
Sugar · Nuts · Waterfalls · Tranquility
Honokaa-Hamakua
Curio · Tradition · Simplicity · Sincerity



KIRK AEDER

For years the town of Honokaa sat idle, its home town theater empty, local store fronts ghostly quiet, and streets devoid of the bustle that

once rumbled down **Mamane Street** during the boom days of the **Hamakua Sugar Company**, an industry that for the last century has been the life blood



KIRK AEDER

Photo on opposite page is Waipio Valley and one of the many wild horses that roam the valley floor. Above is Honokaa's People Theater as seen from the steps of the Filipino Store. Below is a church in Honokaa.

of the people in this region. Since the decreasing activity of sugar production over the years and the recent decision to halt sugar production altogether, the local citizens of Honokaa have redirected their energy and begun one of Hawaii's most spirited movements of rejuvenation.

In the old days during the earlier part of the twentieth century it was only by train that one could reach the town of Honokaa, which was the third largest city in the territory of Hawaii. From Hilo, vacationers and soldiers on leave from Uncle Sam's army would take the train ride north to Honokaa where night life was king. A dance hall

was even built above the **Botelho building**, the first car dealership in the town.

Included in this new Honokaa is the town's farmers market that has become a weekly event in the downtown area in front of the Botelho Building. The market is open each

Saturday of the month. As Hawaii's old theaters are becoming more and more popular, the citizens of Honokaa enjoy their own **People's Theater**. The doors of the theater are opened for feature films every Friday, Saturday and Sunday evening at Honokaa's historic theater.

Outside of Honokaa town heading north to

KIRK AEDER





KIRK AEDER

Aerial view of waterfalls in the valleys between Waipio and Pololu.

Waipio Valley the landscape changes dramatically. A series of deeply cut valleys edge the coastline all the way to Pololu Valley, the tip of the North Kohala region. No roads exist here only rough trails leading up and down the valley rifts which should not be traveled by inexperienced hikers. The hike to Pololu Valley from Waipio takes even the most experienced hiker several days to complete.

Legend has it that it was in Waipio Valley, "the land of the falling

water", that the great **King Kamehameha**, as a young boy, received his leadership training and first learned to surf. Today, family ohanas, "houses", still dot the landscape which is separated by a river that leads into the open sea. Local farmers and their families continue to make their way of life from farming **taro** and fishing off the sandy shores of this peaceful and remote valley floor. Outside of Waipio Valley and Honokaa town are other early and small settlements of the Hamakua region such as **Paauilo, Kukuihaele and Laupahoe**. These towns are all filled with a rich and local culture that happily survives in this region of the Big Island. The Hamakua Coast is a jungle of botanical splendor.

Old doors and new businesses will continue to open in Hamakua as a period of positive change continues to sweep through the land.



FINE QUALITY BAKERY & ESPRESSO BAR

Located minutes from Waipio Valley. Fresh pastries, macadamia nut desserts, cookies, croissants, foccacia's, fresh sandwiches daily.

Snacks & Light Lunches and the Bakery's own Gift Shop.

(808) 775-9478



Mamane Street, Honokaa

Places of Interest

Outside of Honokaa town on Highway 19 is one of the Big Island's busiest local dining spots, **Tex Drive In**. This local diner is a popular place to stop for locals and visitors alike as it features both Hawaiian and American cuisine. The menu includes everything from hamburgers to malasadas, including fresh fish plates and rice. Service is quick and the atmosphere bustles making Tex a fun and tasteful stop for lunch. Before heading on to Waipio Valley make sure you stop in at **Mamane Street Bakery** for a mouthwatering treat. Owner/baker Ely Pessah, keeps his bake case filled with breads, pastries, and other delectables like Portuguese Sweet Bread and Money Macadamia Nut Bran Muffins. The aluring smell of freshly brewed espresso and cappuccino also lingers. Also, try Ely's famous macadia nut pie by the slice, its great!



Visitors wanting to see some of the very best in art should make **Amaury Saint-Gilles Contemporary Fine Art** a definite stop on their tour along the Hamakua Coast. New shows regularly feature original work from Hawaii & the Pacific Rim, many showing exclusively at this Honokaa gallery run by its' namesake owner, author of a half-dozen books on Japanese arts. Also located in Honokaa is the **Bad Ass Hawaiian Macadamia Nut Factory** which is located down the hill from Jolene's Kau Kau Korner. Hawaii's oldest macadamia nut mill allows visitors the opportunity to view the inner workings of a macadamia nut factory. Macadamia nut creations fill the store shelves and will undoubtedly make your taste buds dance when you try them. Also featured is the factory's own bake shop as well as a complete line of Bad Ass Coffee.

**AMAURY
SAINT-GILLES
CONTEMPORARY FINE ART**



(808) 775-9278

LOCATED IN HONOKAA'S HISTORIC
BOTELHO BLDG.
Open Daily, 10am - 5pm closed Wednesday

Famous Hot Malasadas

Try the
ISLAND'S
BEST
BURGER
and Local
Favorites



"Ono Kine"
in
Hawaiian
means
VERY
GOOD

775-0598

Open Daily from 5:30am - 8:30pm
THE PLACE TO STOP
between Waimea & Hilo on Hwy. 19 in Honokaa



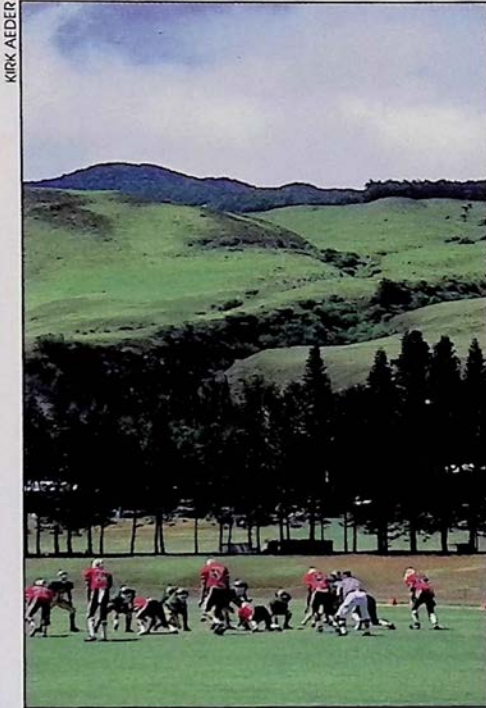
**TAKE A FREE TOUR OF
"THE ISLAND'S OLDEST
MACADAMIA NUT FACTORY"**
LOCATED IN HONOKA'A TOWN

VIEW THE INNER WORKINGS OF A MACADAMIA NUT FACTORY
OUR SHOWROOM OFFERS FRESH MACADAMIA NUT CREATIONS,
AND 100% KONA COFFEE

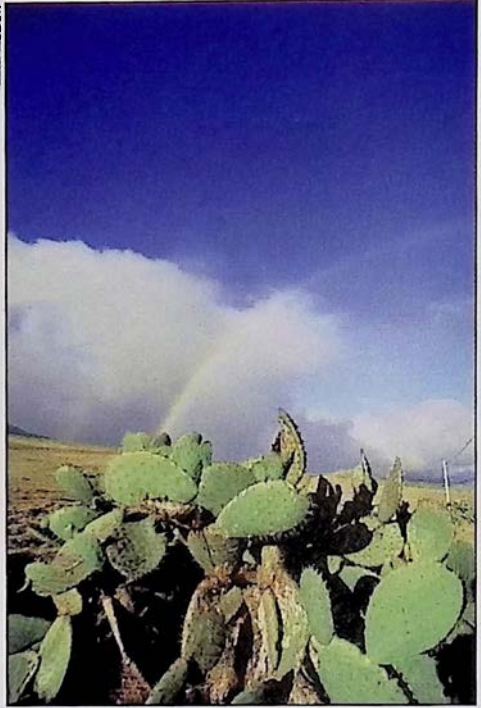
775-7743

Upcountry Waimea

Hawaii's Paniolo Town



KIRK AEDER



KIRK AEDER

Above photos are of a high school football game at Hawaii Preparatory Academy in Waimea and a rainbow and cactus in the high country of Mauna Kea. Opposite page photo was taken along Saddle road where the land is mostly used for ranching.

Between snow capped **Mauna Kea** and the Kohala mountains the green hillsides of North Kohala roll along under wispy white clouds, and afternoon rainbows that frequently stream their way from the skies above Waimea. Inside this landscape herds of grazing cattle can be seen meandering their way through sloping pastures filled with cactus and dry underbrush as Hawaiian cowboys called **paniolos** still ride horseback and

work the ranges.

Ranching began in this region of the Big Island after King Kamehameha appointed, in 1815, a young seaman named **John Parker** to hunt and shoot the herds of wild cattle whose population had grown uncontrollably since their introduction to Hawaii in 1793. Parker, who accomplished his mission, managed to domesticate a herd of his own before marrying a Hawaiian chiefess. The

Vast Upcountry Pasture Lands and Ranching, Under a Snow Capped Mountain

Places of Interest

Begin your tour of Waimea with a cup of coffee and a bite to eat at **The Waimea Coffee and Company** located on Hwy. 19 at Parker

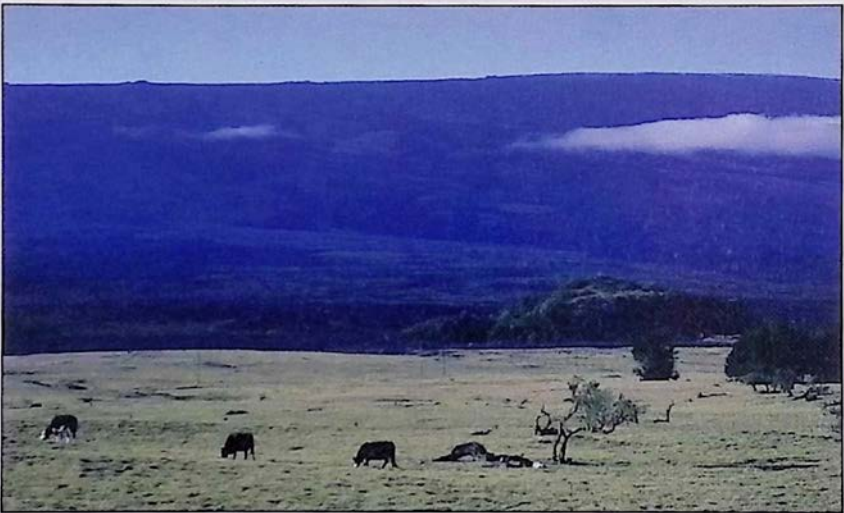


Square. The coffee shop boasts the Big Island's largest selection of gourmet coffees from around the world as well as a healthy selection of breakfast and lunch items which includes croissants, pastries, soup du jour, sandwiches, salads and a gourmet groceries pantry.

marriage helped Parker to acquire the land that would later be used to found his 250,000 acre ranch in 1847. Today's existence of Parker Ranch as one of the largest ranches in the United States gives the outsider an idea of the magnitude of its size.

Today, the town of Kamuela, more often referred to after its district

name Waimea, is a town that still surrounds itself with a ranching lifestyle. The brightly colored Victorian houses and shops, tidy yards filled with flowers and skeleton remains of wagons and wheels gives visitors the opportunity to see yet another sphere of the diversity of cultures that exist in Hawaii.



CAFÉ

MARKET

WAIMEA  **COFFEE**

"For a Welcome Break in Your Day"
Offering the best espresso drinks, hot or cold, fine teas, juices, gourmet coffees, mugs, t-shirts and 100% Pure Estate Grown Kona Coffee. Outdoor seating on the courtyard lanai at Parker Square.

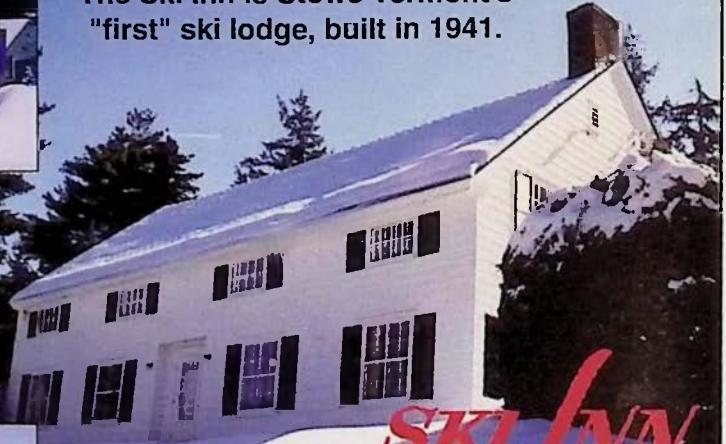
We mail-order anywhere!

1-800-854-5662 or 885-4472

Located on Hwy. 19 in Waimea

The next best thing to a vacation in Hawaii is a ski getaway in Stowe, Vermont.

The Ski Inn is Stowe Vermont's "first" ski lodge, built in 1941.



Your Hosts
The Heyer Family
 RR 1 Box 1940
 Stowe, VT 05672
 (802) 253-4050

Snorkel & Sail



Volcano & Falls



Manta Night Dive



Maui Kea Van/Hike



**☺ If You're Not ☺
 Booking With Us,
 You're Paying
 Too Much!**

REAL DISCOUNTS:

No timeshare presentations, gimmicks, buy 1 to get 1, or hidden charges. You save up to 15% on every activity we book! Don't spend money to save money or be fooled by "per couple" discounts!

Prices subject to change.

15% OFF!

MOST activities. 10% or 5% off many others!

329-1038

Call Any Day
 7:30 - 5:30



REAL EASY:

Call us and we'll book the activity with you on the phone, charge your credit card and fax your voucher directly to the operator. All you need to do is show up and have fun!

Visa, Master Card, AmEx.



continued from page 26

lay flat, side by side as they encircle the neck. "The first comment from people is that they have never seen anything like mine," he admits. "My nuts are hand polished. I never bleach the white ones and I never paint the dark ones. Varnish will turn yellow. Mine are all natural with a finish that's like putting your hand on glass," he says proudly. In his backyard, he has planted a tree that is expected to produce small nuts. White kukui must be hand-picked at an immature stage, so this will ensure him a reliable supply of the rare whites when the tree

Discoveries (phone 885-3633) on the Big Island, prices for leis reflect the rarity of the seed as well as the work put into making a lei. A small seed, Chinese-red wiliwili choker might cost \$450, though more common wiliwili leis can be found for much less at crafts fairs.

To choose a quality lei, look at the way the colors are combined to make a pattern, and check the workmanship. Seeds should be sized and the lei should be finished nicely, perhaps with a hand-polished kukui nut at either end. Pride in workmanship is universal with every crafter,



BETTY FULLARD-LEO

Hawaii's most popular seed lei, the kukui nut.

starts producing in a couple of years. Fegerstrom says kukui strands during the early 1900s were worn very long, almost to the knees, but today the leis are worn shorter, about 32-34 inches.

Fegerstrom's double necklaces are generally priced from \$65 to \$195 in fine retail boutiques.

In shops such as Cook's

whether he works with the demanding kukui, the smaller, more colorful wiliwili, or any of the less common seeds. For Island seed crafters, the rebirth of the art has brought a renewed respect for Hawaiian artisans of old, as well as increased pride in their own culture.



Coffee Times

Behind the Magazine



Kirk Lee Aeder is a world renowned ocean sports photographer who moved to the Big Island nearly four years ago. He previously lived for ten years on Maui. Besides his stunning photography of the Hawaiian Islands, Kirk travels regularly to far off places like Japan where he shoots photos for a variety of travel magazines. As a photo journalist, he is currently the overseas editor for *Surfing World* magazine in Japan, and has been published frequently in American publications like *Sports Illustrated*, *Outside*, and *Endless Vacation*.



Betty Fullard-Leo, as a freelance writer, has been covering Hawai'i culture, travel, art, food and lifestyle for fifteen years. A 1980 graduate of the University of Hawaii school of journalism, she is contributing food editor for *Hawaii* magazine, and a frequent contributor to other Hawaii-focused magazines, books and newspapers, such as *Aloha*, *Spirit of Aloha*, *Fodor's Guides* and *Los Angeles Times* special sections.



Sophia Schweitzer lives in North Kohala on the Big Island of Hawaii and is a freelance writer. She writes about food, health, travel, and Hawaiian history. She also writes fiction and teaches math to the young people of Kohala. Her business, *The Write Answer*, provides research, resume and biographical services.



Les Drent, a proud member of the notorious generation X, is founder and publisher of *Coffee Times*, the alternative guide to the Big Island of Hawaii. He is a New Hampshire native and 1991 graduate of the College of Wooster and has lived in the village of Holualoa on the Big Island of Hawaii for the past five years. Besides publishing Les also roasts, sells, and is a proud advocate of 100% Kona coffee. In his free time he enjoys surfing, travel and an occasional game of inline hockey at Old A's.

Hina's Kapa

by Sophia Schweitzer



KIRK AEDER

Hina spreads out her kapa, her beaten cloth, white as snow, clear as a mountain stream. She places stones on them, to prevent the raging winds from blowing her clouds away. Hawaiian women look up at the sky and understand the solemnity of their craft, the making of bark cloth. Working their tools, they pray.

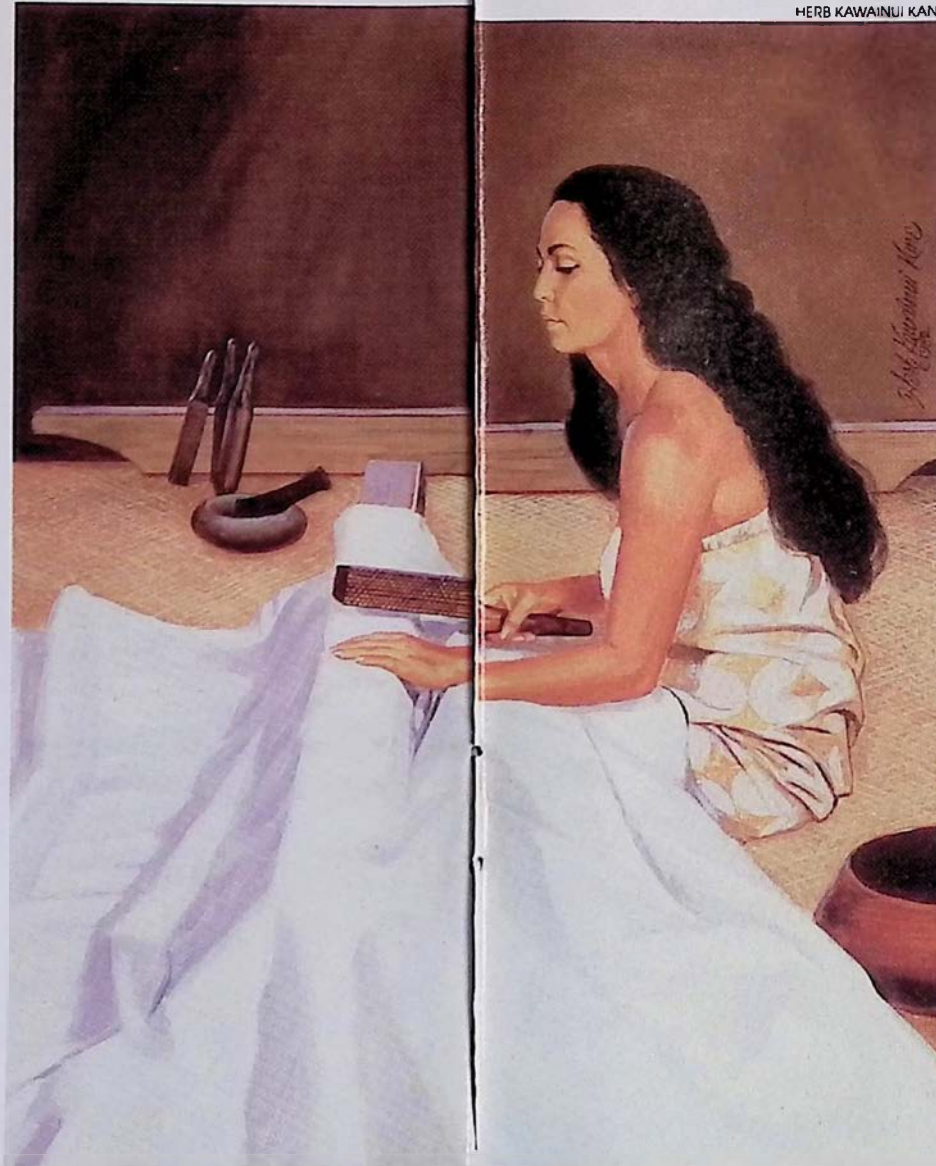
The leading kapa cloth experimenter and practitioner is Puanani Van Dorpe, depicted in the painting below at work in her studio. For nearly twenty years she has patiently gathered old accounts of kapa processes and put them to actual test, carefully recording and evaluating the results of each experiment. Through arduous practice she has also developed the skills for beating, watermarking, and decorating, and she is now able to produce kapa

Kapa was used for clothing, for the malo (loincloth), the pau (woman's wraparound), and the kihei (shoulder wrap). Kapa bed-sheets mirrored the wealth, rank, and social success of Hawaiians. In religious ceremonies, the cloth was considered a veil between their world and that of the gods.

As for the manufacturing, few cultures have paralleled the elaborate and increasingly sophisticated techniques of the Hawaiians. The first step was to cut and separate the inner and outer bark of wauke, the paper mulberry tree, favored for the task. The inner bark then soaked in water, to soften, purify, and bleach the fibers. Kapa should be as white as Hina's clouds.

Skilled men and women beat the soaked bark with a wooden, rounded hohua on a stone anvil till it was felted. A second beating took place in special halaus (houses) under kapu (taboo). Here, each woman used her personally designed carved i'e kuku beater, leaving an indelible and unique watermark on the cloth. A skilled kapa worker could beat one to two sheets in a day. Each cloth measured on average 67 by 17 inches. Paints and stamps created additional surface designs. Sandalwood and flowers lent sweet fragrance to the clear, crisp cloth.

In the 18th century kapa was thick. The bare watermark designs were angular and linear. When European merchants arrived with woven silks, interest in kapa rapidly declined. For a while women still continued the ancient craft, adding new



that is identical to kapa produced centuries ago. She has shared her discoveries with others, and a growing interest on the part of art collectors may further stimulate the revival of this almost-lost art.

She has taught others. In 1989 she enlisted the help of other Hawaiian women to make 1,000 pieces of kapa for the respectful reburial of human remains excavated by archaeologists from an ancient site.

Herb Kawainui Kane, **VOYAGERS**, 1991

fibers, using new tools. Watermarks now blended with detailed bamboo stamps in complicated, circular patterns. But what was gained in detail, was lost in function.

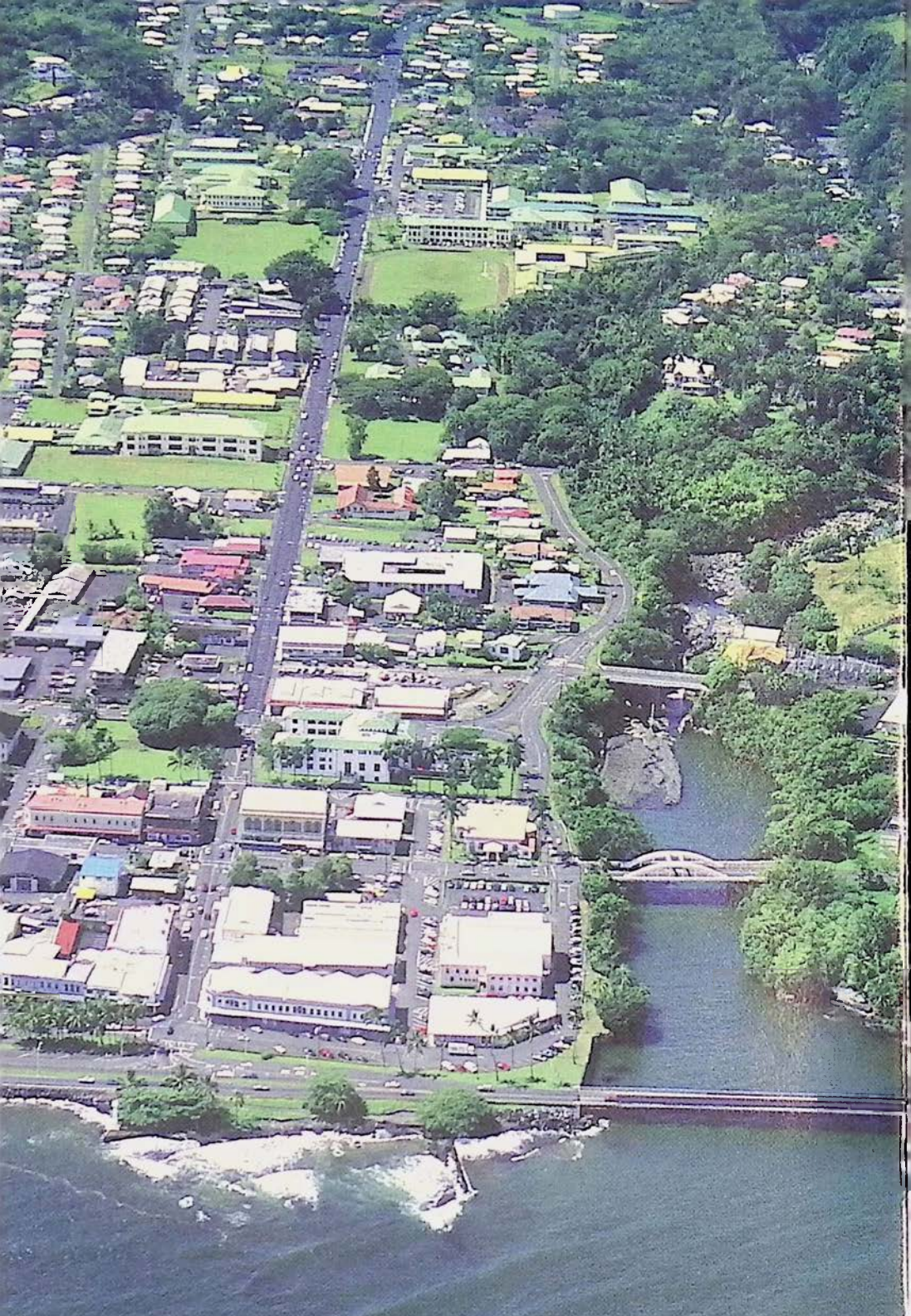
The luxurious blankets and bolts of fabric unfolding from foreign vessels won the Hawaiian heart.

And the missionary wives, eager to cover the Hawaiian's sinful nudity, grasped the opportunity. The American Board of Missions hosted its first official sewing circle on April 3, 1820. Taught by seven prim east-coast women, four half-naked large Hawaiian women, wives of chiefs and kings, made their first mu'u mu'u, the ample dress, still in use today.

The sewing circle marked a new era. The mastery of kapa beating almost died. But perhaps tradition never dies. Patchwork quilting, so favored by the missionary wives, never took off. When a Hawaiian woman saw a beautiful white sheet, like Hina's perfect kapa, she couldn't bear to cut it up in tiny blocks, only to sew it back together! She could, however, find the shape of a flower or a leaf in a scrap of fabric elsewhere. And appliqué it on that perfect white. To keep the kapa in place. So was born the kapa apana, the Hawaiian quilt.

White, smooth and fragrant as linen was the ancient kapa. White, smooth and crisp is the background of the Hawaiian quilt. Designs inspired by nature. As with other Hawaiian arts, the art of kapa lives on. Hina's clouds are still white today.





Old Hilo From Above
photo by Kirk Aeder



A Celebration of Life

3rd Big Island DOLPHIN DAYS

Friday, July 4 - Sunday, July 6, 1997

Join us as we celebrate the third birthdays of dolphin calves *Kuokoa*, *Lokahi* and *Kolohe*, second birthday for sister *Malia* and the first birthday for little brother *Kainalu*.



HAWAII SHRINERS HOSPITAL
FOR CRIPPLED CHILDREN

All Proceeds Benefit



Friday, July 4:

Waikoloa Marine Life Fund Keiki Program • "Trainer Talk" Seminar • Special Dolphin Program • Birthday Luau • Fireworks

Saturday, July 5:

Celebrity Golf Tournament • Volleyball and Tennis Tournaments • Concert & Auction

Sunday, July 6:

Sunday Brunch • Tennis Tournament Finals

Plan to spend your summer vacation with us

Special 3-Night package available; ask for code "DD"

CALL YOUR PREFERRED TRAVEL AGENT, HILTON'S RESORT DESK

1-800-221-2424 OR call HILTON WAIKOLOA VILLAGE 1-808-885-1234





Taste of Hawaii

Anita's Maple Macadamia Nut Coffee Cake

Ingredients:

- 1 1/2 cup flour
- 1 cup macadamia nuts, diced
- 2/3 cup light brown sugar
- 3/4 stick unsalted butter, softened
- 1 1/2 teaspoon cinnamon
- 1/4 teaspoon salt
- 1/4 cup pure maple syrup

In a food processor blend together everything but syrup. Blend until crumbly, then drizzle in syrup and pulse lightly.

Batter

Ingredients:

- | | |
|----------------------------|--------------------------|
| 2 cups flour | 1/4 cup pure maple syrup |
| 1 1/4 teaspoon baking soda | 1 1/2 maple extract |
| 3/4 teaspoon baking soda | 1/2 teaspoon vanilla |
| 1 teaspoon salt | 2 large eggs |
| 1 stick unsalted butter | 3/4 cup sour cream |
| 2/3 cup light brown sugar | |

Preheat oven to 350°. Butter and flour a 9" spring form pan. In a large bowl sift together flour, baking powder, baking soda & salt. Cream butter & sugar until light and fluffy. Beat in syrup, maple extract & vanilla. Beat in eggs one at a time. Add flour mixture to the butter mixture alternately with the sour cream until just combined. Spoon half the batter into the pan, spreading evenly. Sprinkle half the crumb mixture over it, then spoon in the remaining batter and sprinkle with the rest of the crumb mixture. Bake for 50 to 60 minutes, let cool for 5 minutes, then remove to rack. May be made one day in advance.

Recipes provided exclusively for Coffee Times by Heather Campbell of the Four Season's, Hualalai. Friend to Les Drent, Heather's recipes are inspired by truly the world's greatest coffee, Coffee Times 100% Pure Kona Coffee.

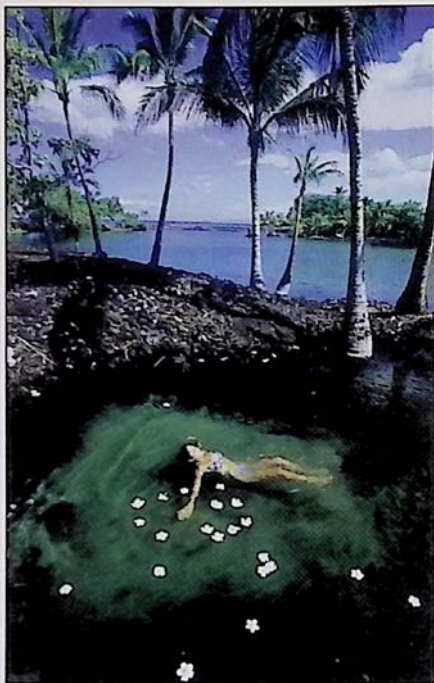
Enjoy!

HEATHER

The Golden KOHALA COAST

Almost always under bright sunny skies the Golden Kohala Coast of the Big Island of Hawaii has for years been the tropical playground of not only ancient Hawaiian royalty but contemporary vacationers from around the world. The Kohala coast which hosts many important historical sights is also home to one of America's most highly rated public beaches, **Hapuna Beach State Recreation Area**. Hapuna's long white sand beach, rolling surf, clear skies, and accessibility make it a popular destination for many island guests.

Among the ebony lava fields that comprise the Kohala Coast landscape are several world renown championship golf courses. From the air or from a distance the green fairways that blanket this rugged terrain soften its



KIRK AEDER

landscape. And, because of the Kohala coast's perfect sunny weather the courses are rarely closed...maybe once every five years.

Wild goat, donkeys and other four legged creatures roam the land freely and occasionally the Hawaiian short eared owl, the **pueo**, can be seen in flight.

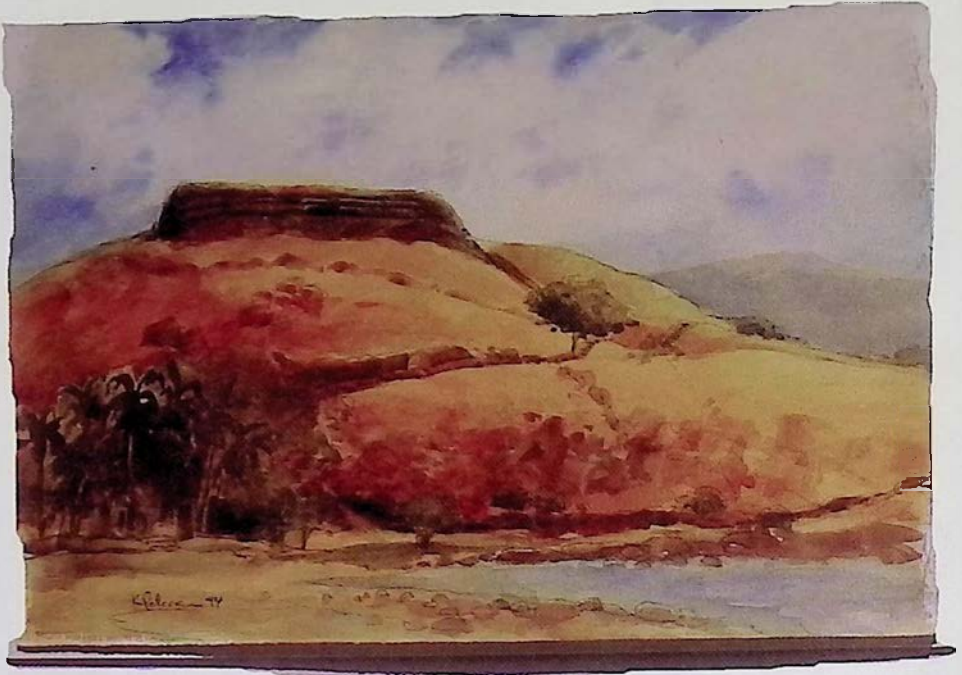
Connecting this forty or so mile coastline is the

ancient **King's Trail** which was travelled by the ruling *ali'i* as well as *malo*-clad runners who were responsible for transporting pond raised fish wrapped in *ti* leaves to the tables of Hawaiian royalty living down the coast in Kailua-Kona. The King's trail

passes through not only the several resort properties but **Pu'ukohala Heiau** and scores of **petroglyph fields**. Pu'ukohala was the last Hawaiian temple



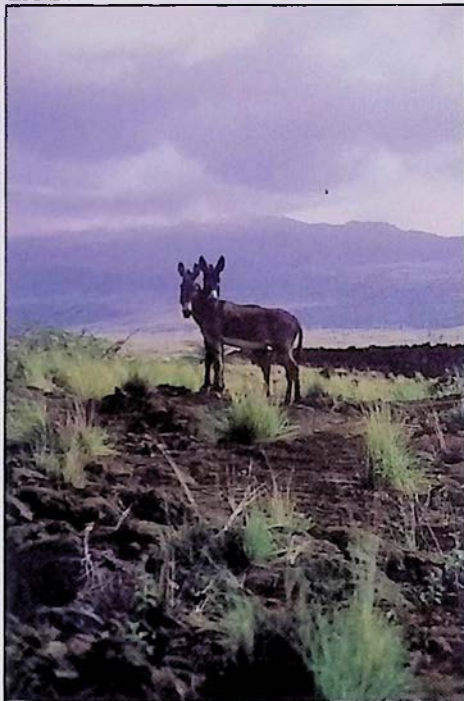
KIRK AEDER



Photos: Previous page photos are of a woman relaxing in one of the many inland pools that exist along the Kohala coast. Below on that page is a petroglyph of a surfer, the carving's design appears to be from modern days. Above painting is of Pu'ukohala Heiau, now a National Park. It was done by Kathleen Peterson and is courtesy of Aumary Saint-Gilles Contemporary Fine Art. The photo below is of two curious wild donkeys near the Kohala coast.

built during King Kamehameha's reign of power. It was said that if Pu'ukohala was built to honor the war god **Kuka'ilimoku**, Kamehameha would be granted the power to conquer and unite the islands of Hawaii under one kingdom. After the temple's completion, Kamehameha did go on to unite the islands of Hawaii, but only

LES DRENT



after several bloody battles had been waged on outer islands. Today the *heiau*, which was the last human sacrificial site in Hawaii, is preserved by the National Park service and is open daily to the public.

The extensive petroglyph fields that are found all along the King's trail hosts its most

Places of Interest

One particular place to enjoy is the **Hilton Waikoloa Village** set amidst lush tropical gardens and tranquil lagoons on 62-acres. The hotel of-



fers 1,241 rooms, three swimming pools, exotic wildlife, Dolphin Quest, children's program, restaurants, shops, two championship golf courses, tennis, Kohala Spa and a museum walkway - it's more Hawaii than you can imagine! **The Bad Ass Coffee Company of Kawaihae** is located upstairs from Cafe Pesto in the Kawaihae Shopping Center. The shop offers bulk coffee: whole bean or ground to your request. The shop also offers New York Style sandwiches, espresso drinks, filter coffee, Bad Ass Apparel & Mugs. For Mail Order call 1-800-719-2345. Also located in the Kawaihae Shopping Center is one of the most popular restaurants on the Big Island, **Cafe Pesto**. The Pacific-Rim Italian cuisine at Cafe Pesto is the epitome of island fresh cuisine as the innovative styles of owners/chefs David Palmer and Jim Williams constantly strive for perfection. From calzones to pizza and mouth watering pastas the ingredients are island fresh. Prices are reasonable too so you have no excuses to miss the Cafe Pesto experience. Another experience not to miss is a visit to **Kona Village Resort** where guests have the opportunity to enjoy a variety of dining pleasures in a unique Hawaiian setting. Reservations required. Call (808) 325-6787 or (808) 325-5555. Refer to their ad on page 5.

popular spot near the King's Shops on Waikoloa Beach drive. Follow the signs along a short trail that direct you to the petroglyphs. Keep in mind that the preservation of these field depends on people staying on the trail while viewing these ancient rock carvings.

Besides all the cultural sights and plush resorts many popular island events also take place along this Gold Coast of Hawaii and the calendar page in the magazine will advise you of them. Enjoy it all while you wine,

dine, and play on the Kohala coast.



**THE BAD ASS
COFFEE CO.
AT KAWAIIHAE
HARBOR
SHOPPING
CENTER**

**NEW YORK DELI STYLE SANDWICHES,
BULK COFFEE, BAD ASS APPAREL, & MUGS**

OPEN 8AM TO 8PM DAILY,
SUN. & MON. CLOSED AT 4PM
882-7019, 1-800-719-2345

Enjoy...

CAFE

Pesto

Open 11-9 daily
till 10 Fri-Sat

WOOD-FIRED PIZZAS • PASTAS
CALZONES • RISOTTOS

in a relaxed dining atmosphere

"1996 Hawaii Top Restaurants"
- 1996 Zagat Review

Two Locations:
KAWAIIHAE SHOPPING CENTER • 882-1071
DOWNTOWN HILO, ON THE BAY
Historic S. Hala Bldg. • 969-6640

Friendly North Kohala

Art Galleries, Fine Dining, Cafes, Quaint Shops, Kamehameha Statue, Pololu Valley



Above left: Joan Channon (right) and Aunty Mary (left) of Bamboo Restaurant in Hawi town. The restaurant features Pacific rim cuisine and hosts live entertainment on occasion. Above right: The view looking into Pololu valley. Below: the Hawi theater.

Following highway 270 north visitors will encounter a landscape filled with historical landmarks that include the original **King Kamehameha, statue, Kalahikiola Church, and Mo'okini Heiau** which is regarded as the oldest pre-Western contact temple of worship. In the year 1758 King Kamehameha was believed to have been born at Mo'okini. Also to be found in the North Kohala region are the remnants of a once thriving sugar industry of the 1880's which is still visible in the many old storefronts of **Hawi & Kapaau towns.**

When you're done visiting the

towns of Hawi and Kapa'au Hwy. 270 will lead you through North Kohala's fertile pasture lands, dense forests, and ultimately to **Pololu Valley**, which offers one of the best scenic view lookouts on the island. If the road were to continue on past Pololu Valley you would eventually end up at Waipio Valley at the northern end of the



Hamakua coast. Separating these two valleys are several other magnificent valleys accessible only by foot or horse. If you plan to

hike beyond Pololu be prepared for a long trek and bring plenty of water and supplies. The trails are narrow and

Places of Interest

The towns of Hawi and Kapaau are now preserved by a new generation of Hawaii businesses which have their own distinct local offerings.



In Hawi is the **Bamboo Restaurant & the Kohala Koa Gallery**. Inside what was once the grand old Takata store, Bamboo combines Pacific Rim dishes with farm fresh herbs and local fish to create an innovative style of cuisine. The atmosphere is cozy and authentic with live entertainment on weekends. Inside the Bamboo you'll find the Kohala Koa Gallery, featuring the works of over 40 additional island artists. On the other side of the street from Bamboo is **Kohala Pacific Realty**, where visitors are welcome to stop in for free maps of the North Kohala region. Owner John Adams is taking a different approach to real estate sales. He is promoting the renovation and preservation of many old buildings in North Kohala's towns.

steep and should not be walked by amateur trailmen. While driving along the coastline of North Kohala remember that if the skies are clear, you may be able to catch a view of the island of Maui looming on the other side of the **Alenuihaha channel**, which separates Maui from the Big Island. Between the months of December and April visitors are almost guaranteed a

DON RICH



humpback whale sighting off the coast of North Kohala. This region of the Big Island is a particularly favorite spot for our migrating friends from the north.

Come and enjoy this peaceful region of Hawaii. You will be amazed at the ancient and modern wonders it

has in store for you.

bamboo
RESTAURANT

Fresh Island Style Cuisine
889-5555
(closed Mondays)

Art & Custom Koa Furnishings
889-0055
(open daily)

Kohala Koa
GALLERY

Just 30 minutes from the Kohala Coast Resorts
In Historic Hawi Town

KOHALA PACIFIC REALTY

Specializing in **North Kohala LAND & HOMES**

Phone (808) 889-5181
Fax (808) 889-5161

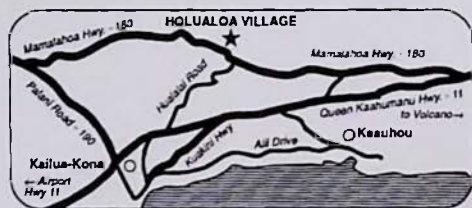
Located in the restored Toyama Building
Downtown Hawi

P.O. Box 307 Kapaau, Hawaii 96755

The Village of Holualoa

Art & Espresso

Days pass slowly in the artist's retreat town of Holualoa, almost like the gentle mountain breezes which weave their way through the groves of coffee trees lining the slopes of Mt. Hualalai. Steeped in natural beauty and tradition, this little mountainside coffee town blends a touch of today's art with a passion for the simpler life of the past. The village's many private galleries showcase the works of many local artists in a wide array of mediums.



When you are done visiting the galleries, the friendly local espresso bar, **Holuakoa Cafe**, will undoubtedly snatch an hour or two from your day and maybe more if you decide to indulge in the homemade cake and



pastry selection. Owner Meggie Worbach personally works the espresso bar every day of the week except for Sundays. Her espresso drinks are, hands down, the best on the island and Meggie's German heritage makes her a fanatic for perfection. Perhaps the most unique feature about the cafe are the European visitors it attracts. It seems like there is always a foreign voice being heard at Holuakoa. For many visitors who don't speak English Holuakoa is an extra nice stop on their vacation.

Make it a point to wander up for a visit to Holualoa you will love this adorable country town.

Holuakoa Cafe

ESPRESSO BAR

HOURS:

Mon-Sat 6:30am - 5pm
Closed Sunday

322-CAFE

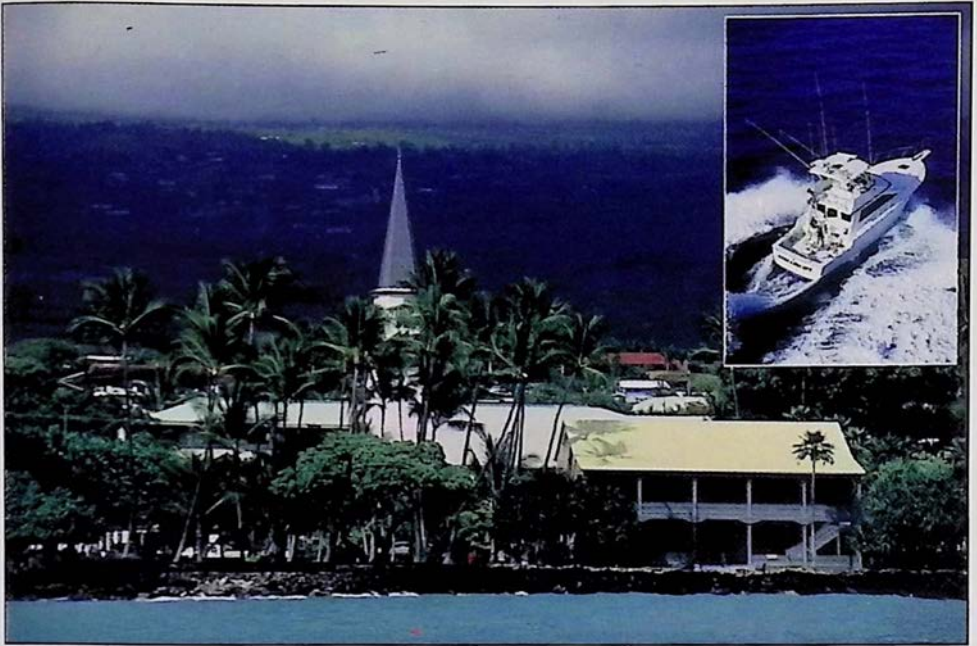


Holuakoa, Hawaii
96725

100% Kona Coffee and Coffees From
Around The World • Pastry • Salad
Light Fare • Indonesian Imports • Gifts

Enjoy a wide selection of my Kona coffee drinks while you converse with friendly locals and island travelers. Or, simply relax in the cafe's tropical garden.

Aloha, *Meggie*



KIRK AEDER

North Kona

Undoubtedly the busiest part of the Big Island is the district of North Kona and the seaside village of Kailua. Nestled in this busyness are a few significant historical and cultural landmarks. Beside the Kailua pier is *'Ahu'ena Heiau* built in 1817. This ancient temple which was built on a rock platform was dedicated

to patron spirits of learning, the arts, and healing. King Kamehameha also made his home here in a thatched hut where he could maintain control over boats entering and leaving the bay. Kamehameha also monitored the farming pursuits of his village from *'Ahu'ena*. Also on Alii Drive is *Mokuaikaua Church*. Built in the

We landed at Kailua (pronounced Ki-loo-ah), a little collection of native grass houses reposing under tall coconut trees, the sleepest, quietest, Sundayest looking place you can imagine. Ye weary ones that are sick of the labor and care, and the bewildering turmoil of the great world, and sigh for a land where ye may fold your tired hands and slumber your lives peacefully away, pack up your carpetsacks and go to Kailua! A week there ought to cure the saddest of you all.

Mark Twain, 1866

1820's *Mokuaikaua* was the first Christian church to be built by western missionaries. Across the street is *Hulihee* Palace, a nineteenth century vacation home to some of Hawaii's monarchy. *Hulihee* was built in 1838 and today serves as a museum open daily to the public. Occasionally, throughout the week, some of Hawaii's youngsters can be seen in the courtyard under the shade of giant banyan trees practicing hula under the direction of a *kumu hula* (teacher of hula). Later in the nineteenth century Kailua was a village that was used primarily as a sea port for shipping cattle, coffee and sugar off island. Most of the population in Kona lived in the mountainside towns between Honaunau and Holualoa along a stretch of road still called Mamalahoa Highway. The town of

Kailua, for the most part, was always a sleepy kind of village. Up until the early 1970's the population was no more than 700 people, today the population of Kailua is around 35,000 and growing rapidly. Directly contributing to this outbreak of growth is the recent influx of realtors, developers and land speculators that pay little or no attention to the sanity of the place. Looking beyond the trafficky bustle of Kailua there are many wonderful opportunities for personal dining, shopping and tour experiences around the town. This district of North Kona also hosts some of the Big Islands most beautiful white sand beaches. A short drive north of Honokohau Harbor on Queen Ka'ahumanu Highway are the beaches of *Makalawena*, and *Mahai'ula*. These beaches require a



KIRK AEDER

Photos on previous page are of a fishing boat heading out of Kailua Bay and Mokuaikaua Church and Hulihee Palace as seen from Kailua Pier. This page above is Kona's Shane Dorian now competing on the professional surfing tour.

KEEP KONA COUNTRY!

Places of Interest

If you're looking for a great place to relax and enjoy a coffee check out any one of the three Alii drive **Bad Ass Coffee Stores**.



They specialize in only top grade 100% Kona coffee and Hawaiian grown coffees. Purchase by the pound or by the cup. Their North Kona stores can be found in Waterfront Row, at the Keauhou Shopping Village and in the upcountry village of Kainaliu. **Biker's Brew coffee** specializes in 100% Kona coffee and you can get your motor running by stopping in the village of Holualoa and purchasing a pound at Holuakoa cafe. Their coffee is also available through mail order.

short hike to access them. Easier to reach and located on Alii Drive to the south are **Kahalu'u Beach Park** and **Magic Sand's**. Both these beaches provide ample parking and do not require a hike.

Around these historical sights are a whole host of restaurants and shopping opportunities and hundreds of

visitor and local businesses keep the streets and sidewalks around Kailua busy with activity throughout the year. Cruise ships lay at anchor off the shores of Kailua-Bay and many tour and activity companies provide visitors with ample opportunity for hiking, sailing cruises, snorkeling and scuba adventures.



**SPECIALIZING IN 100%
PURE KONA COFFEE**

THE ORIGINAL STORE
KAINALIU · 322-9196

THE BAD ASS COFFEE CO. OF KAWAIHAE
KAWAIHAE · 882-7019

BAD ASS MACADAMIA NUT FACTORY
HONOKA'A · 775-7743
WATERFRONT ROW

ALII DRIVE KAILUA, KONA · 326-4637

THE BAD ASS WAREHOUSE
DOWNTOWN ALII DRIVE · 329-8871

KEAUHOU SHOPPING CENTER
KEAUHOU · 322-0100

ALSO THROUGHOUT THE WORLD



**GET YOUR MOTOR
RUNNIN' WITH
BIKER'S BREW
100% KONA COFFEE**
**SOLD EXCLUSIVELY AT
HOLUAKOA CAFE
AND THROUGH MAIL
ORDER AT:**

(808) 329-2254

IMOCO MEDIA INC.

**PHOTOGRAPHIC
AND JOURNALISTIC SERVICES**

Kirk Lee Aeder

P.O. Box 385155
Waikoloa, Big Island of Hawaii

U.S.A. 96738

Phone / Fax #808-883-0878

SOUTH KONA

Kona Coffee Farms • Kealahou Bay •
 Captain Cook Monument • Pu`uhonua O
 Honaunau • The Painted Church



KIRK AEDER

There is, perhaps, no other region on the Big Island shrouded in more history than the district of South Kona. Whether it be the origins of Kona coffee, the ancient Hawaiian village setting of *Pu`uhonua O Honaunau* (Place of Refuge) National Park, or the Painted Church nestled along the hillside overlooking Kealahou Bay, the spot where the famous English explorer Captain Cook met his fate in 1779, South Kona will keep the historically minded visitor busy weaving their way through its network of mountain roads.

Coffee first came to Kona in 1828 when the **Reverend Samuel Ruggles** brought plant cuttings to Kealahou. The early Japanese

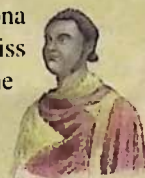
farmers cultivated many of Kona's first farms and engineered the system of milling and processing this prized coffee.

On highway 160 amidst coffee farms and high on the slopes of Kealahou Bay is **The Painted Church**, where sometime between 1899 and 1904, Father John Velge, a Catholic missionary from Belgium painted images on the interior walls of the church depicting the biblical scenes of heaven and hell.

At the bottom of Napoopoo Road is **Hikiau Heiau** at Kealahou Bay, and a white stone monument across the bay that marks the spot where **Captain Cook** was killed in 1779. The story behind Cook's death

Places of Interest

When traveling through South Kona you definitely do not want to miss the opportunity to visit one of the region's working Kona coffee



farms. On Painted Church Rd. you will pass **Bay View Farm and Mill**, family owned and operated by New Hampshire native Andy Roy and his wife Rosalyn. Over the distant hum of pulping and grading machines the sweet and damp smell of freshly milled coffee cherry fills the air during the fall and winter coffee season. Bay View has a coffee sampling room and gift shop along with their milling operation and guests have the opportunity here to 'cup up' some 100% pure Kona coffee. In Kealahou, **Greenwell Farms** also offers visitors a personal guided tour of their farm. The Greenwell family has been involved with the Kona coffee industry for over a hundred years and descendants to the founder, Henry Nicholas Greenwell, still work the farm. The tour of the farm concludes with a cupping of the farm's Estate Kona coffee and the opportunity to purchase some of this fabled family coffee. Also located in this region of South Kona is the **Captain Cook Coffee Company** dating back to 1898. The mill is currently owned by Mark Mountanos and Steve McLaughlin of San Francisco. Mark is the fourth generation of his family to operate the company. Captain Cook is primarily a processor, miller and exporter of Kona coffee but has also expanded its business into retail and offers mail order buyers an 800# to call for roasted coffee. Refer to their ad on page 58. The **Kona Historical Society**, located in Kealahou, has made available to visitors two different walking tours. One being a historic coffee mill tour and the other a tour of alii drive.

Kona Historical Society Museum

Historic Kailua Village Walking Tour

Tues.-Sat. 9:30am, Fri. 9:30am, 1:30pm

For Reservations Call 323-2005

Museum located on Hwy. 11, one-half mile south of rural Kealahou.

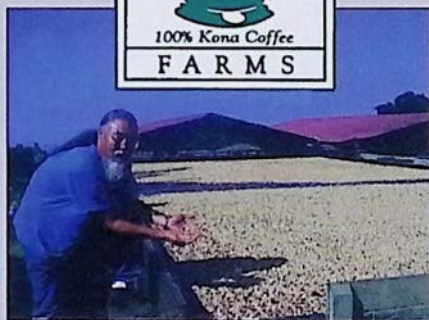


Box 398

Captain Cook, HI

96704

(808) 323-3222



COMPLIMENTARY FARM TOUR

tour of farm & mill concludes with a free cupping of our Estate 100% Kona coffees

(LOCATED BEHIND THE KONA HISTORICAL SOCIETY GROUNDS ON HWY. 11, between mile marker 110 & 111 in KEALAKEKUA) closed Sundays

(808) 323-2862

P.O. Box 248, Kealahou, HI 96750



COMING TO A CORALE NEAR YOU!

a product of Naalehu Fruit Stand

was that it was the result of a failed attempt by Cook and his soldiers to exchange the high chief Kalaniopuu hostage in return for a cutter that was stolen the night before. Cook, who had come south to the Hawaiian Islands seeking shelter for the winter months, was in search of a northwest passage to England.

A lower coastal road connects Kealakekua Bay to *Pu'uhonua O Honaunau* (Place of Refuge) National Park. In the early years of Hawaiian civilization it was to the Place of Refuge that people who broke *kapu* (sacred laws) would attempt to flee. If the *kapu* breaker could reach this sanctuary his life would be spared. Some of these *kapu* that governed the common people

included not being allowed to walk in the footsteps of the chiefs or to touch their possessions. Other rules forbade commoners from eating foods reserved for offering to the gods, and women were not allowed to eat with the men.

The gathering of wood, seasons for fishing and the taking of animals as well as the *hula* were also controlled under the *kapu* system. Other features at the park are *lokos* (ancient fish ponds), *hales* (thatched roof structures that served as homes), *heiaus* and ancient rock walls. Visitors are usually provided with live demonstrations of ancient Hawaiian

crafts such as the building of canoes and tikis at the park.



KIRK AEDER



KIRK AEDER

Photo on page 44 is of Kealakekua Bay. The photo of the woman and coffee cherry on top of this page was taken at a local coffee mill and below this page is a snorkeler touching an eel in Kealakekua Bay.

Hawaiian Tropicals Direct

A Little About What We Do

Nature has made the Hawaiian rainforest flowers absolutely beautiful. Our job is to preserve this beauty and deliver to you a perfect flower. To do this we work fast after we harvest to ship you the freshest product. We clear agriculture inspection and use the fastest means of transportation. We take all the care and precautions in preparing the shipment to ensure you the freshest longlasting flowers. Only the finest cut flower stems and first quality blooming potted plants are used. Our anthurium, orchid and mixed tropical flowers come with full instructions which allow anyone to create an attractive long lasting floral design. Our boxes of tropical cut flowers give the recipient the mix of greens and blooms that will become exotic displays. We are here in Hawaii to serve you night and day. Share the feeling of Aloha with the ones you care for.

1-800-840-3660 Toll Free 24 hours/day

Hawaiian Tropical Flower Boxes

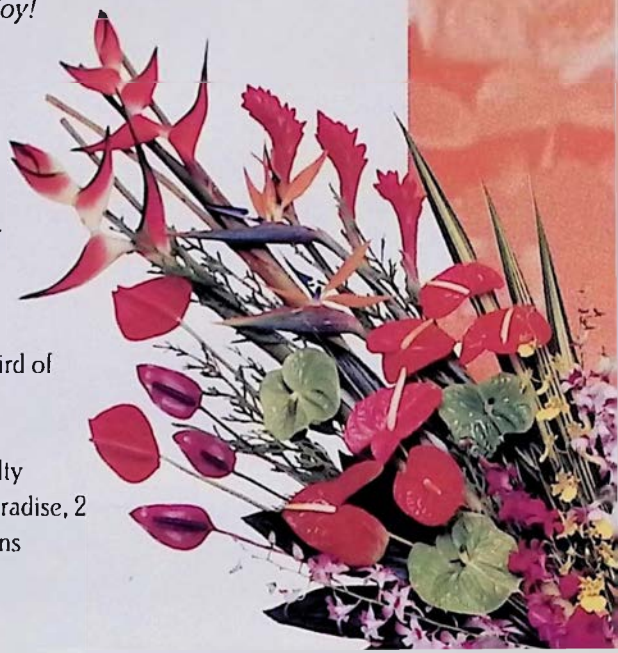
Imagine the delight in receiving a box of beautiful rainforest flowers that will be enjoyed day after day. The box contents listed below have been chosen for their long vase life and their natural beauty. Enjoy!

FB2-CT 7 std. red anthurium, 3 std. dendrobium orchids, 7 greens (17 pieces) \$29.50

FB3-CT 2 med. pink ginger, 2 bird of paradise, 3 std. dendrobium orchids, 4 std. anthuriums, 10 greens (21 pieces) \$39.95

FB4-CT 3 sm. red anthuriums, 3 novelty anthuriums, 3 std. red ginger, 2 bird of paradise, 2 heleconias, 11 greens (24 pieces) \$49.95

FB5-CT 5 med. red anthuriums, 3 novelty anthuriums, 4 std. red ginger, 3 bird of paradise, 2 heleconia, 3 dendrobium orchids, 15 greens (35 pieces) \$69.95



Dendrobium Flowers

DL6-CT 6 stems mixed colors dendrobium
sprays, greens, and vase \$24.95

DL12-CT 12 stems mixed colors dendrobium
sprays, greens, and vase \$39.95

DW12-CT 12 stems white dendrobium
sprays, greens, and vase (24 pieces) \$42.95



DL12-CT



DP6-CT

Potted Orchid Plants

DP4-CT 4" pot, blooming dendrobium
orchid plant with basket \$19.95

DP6-CT 6" pot, blooming dendrobium
orchid plant with basket \$27.95

Oncidium Flowers

OB6-CT 6 oncidium sprays, greens, and
vase \$29.95

OB12-CT 12 oncidium sprays, greens,
and vase \$54.95



OB12-CT



OP6-CT

Blooming Potted Oncidium Orchids

OP4-CT 4" pot, blooming yellow
oncidium orchid plant with basket
\$19.95

OP6-CT 6" pot, blooming yellow
oncidium orchid plant with basket
\$27.95

1-800-840-3660 Toll Free 24 hours/day

1-800-840-3660 Toll Free 24 hours/day

"Hawaiian Aloha"
Tropical Flower Mix

HA2-CT 3 ea. anthurium, 3 ea. ginger, 2
ea. bird of paradise, greens, vase and
foam \$44.95



HA2-CT

"Hawaiian Sunset"
Tropical Flower Mix

HS2-CT 3 ea. pink ginger, 2 ea. bird of
paradise, 6 ea. dendrobium orchids, 3
ea. anthurium, greens, container and
foam \$59.95

HS3-CT 6 oncidiums, 5 pastel anthu-
rium, 3 bird of paradise, 3 pink ginger,
greens, container and foam \$69.95



HS3-CT

Anthurium Flowers

RA6-CT 6 red anthurium flowers, greens,
container, and foam \$29.95



RA6-CT

Obake & Mixed
Anthuriums

OA9-CT 3 obake; 3 midori, and 3 pastel
anthurium flwrs., greens, container, and
foam \$49.95



OA9-CT



Traditional Orchid Leis

- LL6-CT 60 blossom lei, 42 in. long pastel \$14.95
- LW6-CT 60 blossom lei, 42 in. long white \$15.95
- LL13-CT 30 blossom lei, 42 in. long pastel \$25.95
- LW13-CT 30 blossom lei, 42 in. long white \$27.95
- LL60-CT Lip only of 600 blossoms, 42 in. long pastel \$90.00
- LW60-CT Lip only of 600 blossoms, 42 in. long white \$99.00

Note: Max capacity to make lip leis is three per day. Please contact farm to verify availability of lip leis. Allow 2 days for shipment of all leis as they are made on receipt of orders to ensure freshness.

General Ordering Information

Whenever possible we ship by Federal Express standard over night service which usually provides one to two day delivery west of the Rockies and two to three days to the east.

- Allow us a minimum of 48 hours to complete a delivery. We should have 15 days notice prior to Christmas, Mothers' Day, and Valentines' Day.
- Shipping charge is \$10.00 for the first item to a specific address and \$4.50 for each additional item to the same address. Add \$10.00 for each shipment to Alaska.
- Our product is guaranteed to arrive in perfect condition. The guarantee is voided and a \$10.00 rerouting charge will be billed to the sender if an incorrect address is provided us. No P.O. Box numbers, rural route addresses, or hospital addresses are to be used. Because of the nature of our product you must contact us with any problems within 10 days.
- Flower sizes and colors may vary according to seasonal availability. Standard containers are black or white. Please Note: All flowers do not come arranged as shown in these pages. They are shipped in a box with container and full arranging instructions.



Cards

Hawaiian Tropicals Direct

P.O. Box 2069 • Paho, Hawaii 96778

Phone (808) 965-0704 • Fax (808) 965-0143

1-800-840-3660

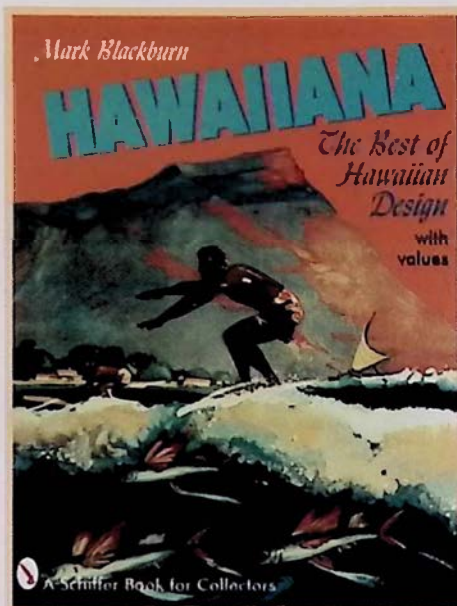
Toll-Free, 24 hours/day

A New Book

HAWAIIANA: *The Best of Hawaiian Design*

by Mark Blackburn

This beautifully illustrated book contains over 600 color photographs and an instructional text that capture the romance and allure of the Hawaiian Islands during their years as a territory of the United States, from 1900 to 1959. The objects shown in the book are all from collections in Hawaii: Aloha attire, jewelry, paper goods and prints, dolls, woodenware, and souvenirs. This is the first comprehensive



overview of Hawaiian objects and designs to be published, containing both the typical and the inspired patterns that are so eagerly sought after world-wide by collectors and designers alike; from Hawaii—the paradise

of the Pacific.

Author Mark Blackburn, a major collector of Hawaiiiana from Hilo, Hawaii, identifies and values the items individually, making this a useful as well as a beautiful book.

Size: 8 1/2" x 11"	Values with captions	256 pp.
ISBN: 0-7643-0109-8	hard cover	\$59.95

To order a personally autographed copy send \$59.95 plus \$6.00 to cover all taxes and postage to:

MAUNA KEA GALLERIES

276 Keawe Street, Dept. CT, Hilo, Hawaii 96720

Telephone (808) 969-1184 Fax (808) 969-4827

Allow 4 to 6 weeks for delivery.

All Major Credit Cards Accepted.

MASKED PADDLERS AT KEALAKEKUA BAY

by Herb Kane

The painting is based on an original sketch and watercolour done by John Webber, a 24 year old artist who accompanied Captain Cook during his voyage in the Pacific.

