

The Alternative Visitor's Guide

FREE

BULK RATE
U.S. POSTAGE
PAID
KAILUA-KONA, HI
PERMIT NO.
40-125



Coffee Times

April 1995 / Big Island of Hawaii / Volume 3 Edition 1

April 16-22
Hilo, Hawaii



"Ka hula Laua'e" by M. Leilehua McDonald

32nd Annual
Merrie Monarch Festival

Advertisers:

ART GALLERIES

Ackerman Galleries	889-5971	P. 25
Cook's Discoveries	885-3633	P. 17
Cottage Gallery	328-9392	P. 32
Kohala Koa Gallery (Inside Bamboo Rest)	889-0055	P. 23
Mauna Kea Galleries	969-1827	P. 3
Upcountry Connection	885-0623	P. 19
Volcano Art Center	967-8222	P. 8
Wo On Gallery	889-5002	P. 24
Woodcarver's Corner	985-8518	P. 9

COFFEE FARMS

Bay View Farm & Mill	328-9865	P. 39
Kahauloa Coffee Co.	328-9555	P. 33
Langenstein Farm	328-9486	P. 40
Old Hawaiian Coffee	328-2277	P. 6

COFFEE RETAILERS AND CAFES

Bad Ass Coffee Co.	1-800-338-7139	322-2646	P. 6
Holuakoa Cafe		322-CAFE	P. 30
Kohala Coffee Mill		889-5577	P. 23
Kona Cafe		1-800-900-KONA	P. 16
Waima Coffee & Co.		885-4472	P. 18

DINING

DINING

Bamboo (Pacific Rim, Thai.)		889-5555	P. 24
Cafe Pesto (Pacific Rim Italian)	Kaiwihae 882-1071	Hilo 969-6640	P. 13, 23
Don's Deli (International)		889-5822	P. 25
Edwards at the Terrace (Mediterranean Classics)		322-1434	P. 26
Jolene's Kau Kau Korner (Cafe)		775-9498	P. 14
La Bourgogne (French)		329-6711	P. 40
Luquin's Mexican Restaurant (Mexican)		965-9990	P. 10
Mamane St. Bakery		775-9478	P. 14
Matteo's Pizza		775-0944	P. 14
Nuang Mai (Thai Kitchen)		965-8186	P. 10
The Godmother (Italian)		965-0055	P. 10
Wakefield Gardens (Home Cooked)		328-9930	P. 32

LODGING

Becky's B&B		929 9690	P. 5
Bougainvillea B&B		929 7089	P. 5
Carson's Volcano Cottages		967 7683	P. 8
Chalet Kilauea		967 7786	P. 9
Hale Kai B&B		935 6330	P. 13
Hale Maluhia B&B	1-800-559-6627	329-1123	P. 30
Hale Ohia Cottages		967 7986	P. 9
My Island B&B		967 7216	P. 40
The Village Inn		965 6444	P. 10
Wild Ginger Inn		935 5556	P. 13

MUSEUMS

Kona Historical Society	323-3222	P. 33
-------------------------	----------	-------

AIR, LAND AND OCEAN ADVENTURES

Atlantis Submarines (Submarine Adventure)	329-6626	P. 27
Blue Hawaiian Helicopters	961-5600	P. 12
Chris' Adventures (Bike, Hike)	326-4600	P. 24
Dan McSweeney Whale Watch	322-0028	P. 11
Hawaii Forest & Trail (Nature Hikes)	329-1993	P. 26
Kona Kai-Yak (Tours, Rentals, Sales)	326-2922	P. 27
Lanakila (Snorkel, Sail, Whale Watch)	987-3999	P. 27
Nautilus Submarine Experience (Underwater Reef Tours)	326-2003	P. 27
Second Wind (Sailing Charters)	334-0577	P. 26
West Wind Sailing Charters	325-6471	P. 26

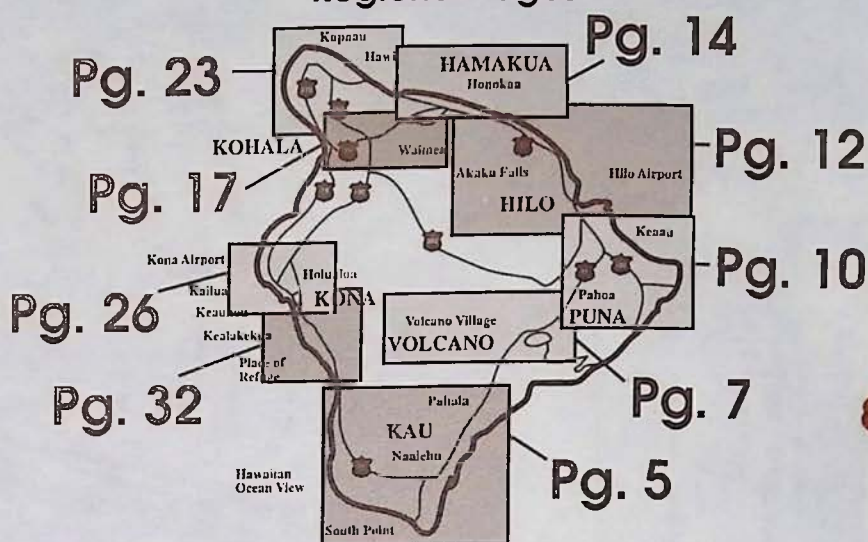
SPECIALTY SHOPS & SERVICES

Antiques	Honokaa Trading Co.	775-0808	P. 14
Clothing	Hawaiian Hemp Co.	965-8600	P. 10
Games	Hawaiian Bingo Co.	969-1521	P. 16
General Stores	Bentleys	885-5565	P. 18
	Naalehu Fruit Stand	929-9009	P. 5
	Pahoa Natural Groceries	965-8322	P. 10
Hair Brushes	Hawaiian Brushes	775-9958	P. 40
Ice Cream	Simply Natural	775-0119	P. 14
Gardens	Akatsuka Orchid Garden	967-8234	P. 7
Live Music	Bosco the One Man Band	322-6604	P. 16
Photo Developing	One Hour Moto Photo	329-2080	P. 27
Publications	Ka'u Landing	929-8130	P. 29
Real Estate	Kohala Pacific Realty	889-5181	P. 25
Spa Service	Querencia Spa	328-2569	P. 32

THEATRES

Kona Market Place Cinemas	329-4488	P. 26
---------------------------	----------	-------

Regional Pages



COFFEE TIMES©

For calendar inserts, historical comments or TO RESERVE AD SPACE

Call or write the publisher, Les Drent, at: (808) 326-7637

P.O. BOX 1092 Captain Cook, Hawaii 96704

PRINTED ON RECYCLED PAPER BY COFFEE TIMES PRESS

For Mainland Subscriptions:

Send \$50 for a lifetime subscription. Add \$10 if outside of USA. Mail to: Up Country Productions
P.O. Box 1092 Captain Cook, HI 96704

Read This

UP COUNTRY is not the manufacturer, or an agent of the manufacturer, for the goods and services being advertised herein and therefore makes NO EXPRESS OR IMPLIED WARRANTY OF ANY KIND WITH RESPECT TO THOSE GOODS AND SERVICES. The publisher will not be responsible for typographical or printing errors, but will reprint without charge that portion of the ad in which the error occurs. Publisher accepts no responsibility for errors resulting from telephone insertions.

Illustrations used herein are for design purposes only and do not necessarily depict the actual items offered by the advertisers. This publication may not be reproduced in whole or in part without the prior written consent of UP COUNTRY and reserves the right to edit, revise or refuse any advertisement.

BUYING & SELLING

VINTAGE
HAWAIIAN &
POLYNESIAN

- ◆ *Paintings*
- ◆ *Artifacts*
- ◆ *Rare Books*
- ◆ *Ephemera*
- ◆ *Photography*
- ◆ *Prints & Engravings*
- ◆ *Old Koa Furniture*
- ◆ *Quilts*
- ◆ *Hawaiiana*

Come to Hawaii's
number one source
for all of the above.
We are located in
historic downtown
Hilo in the Court
Mauna Kea Build-
ing at the intersec-
tion of Furneaux
and Keawe.

We will fly to buy any or all of the
listed items... Top dollar paid.

House calls made!

INTERIOR
DECORATORS
WELCOME !

We specialize in both
residential and
commercial visual
arts-No job is too
large or small.

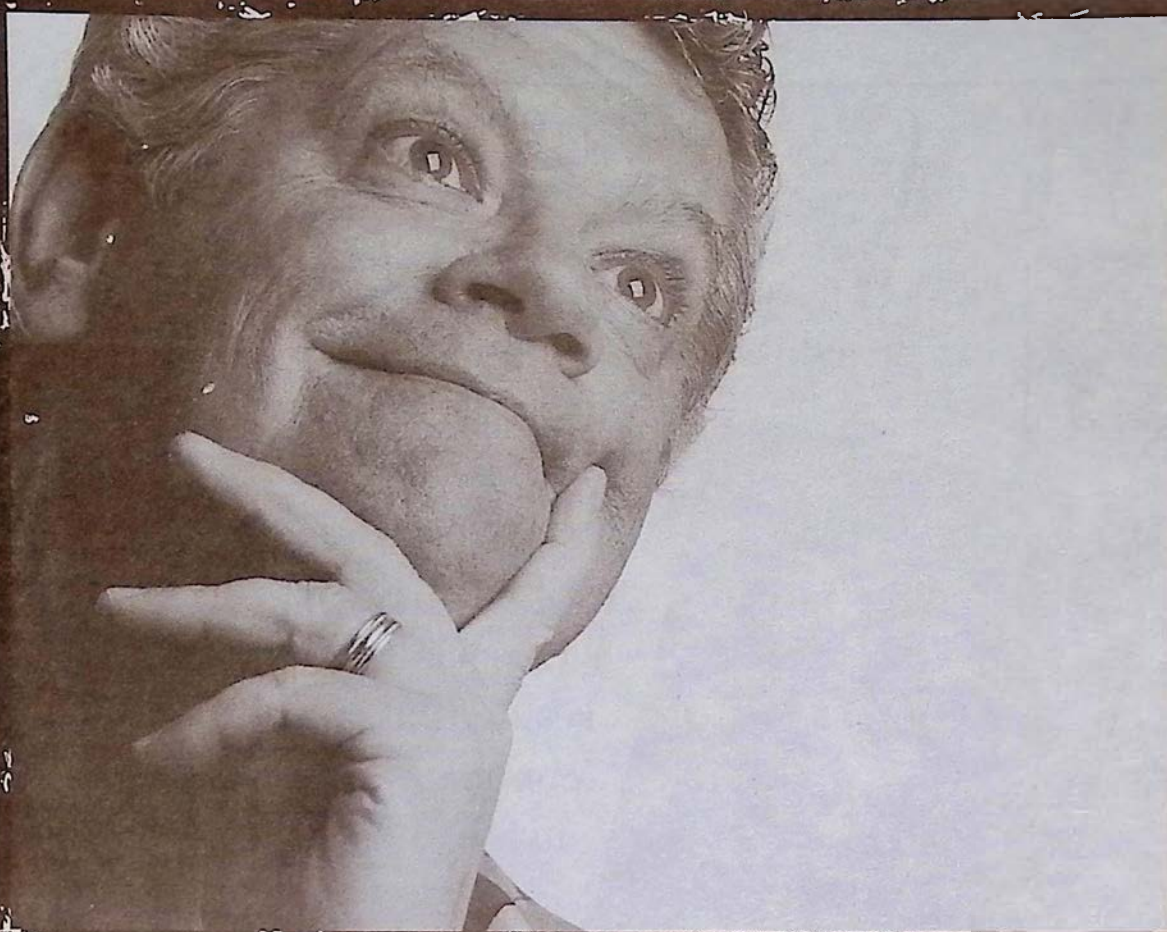


**MAUNA
KEA**

GALLERIES

276 Keawe Street, Hilo, Hawaii 96720
808-969-1184 ◆ Fax: 808-969-4827

Appraisals available by senior certified appraiser .
We ship anywhere in the world by Fed Ex.



After my morning
cup of Bad Ass Coffee,
I go to the park
And feed the Birds...

To My Cat.



**Bad Ass Coffee. 100 percent
nothin' but Hawaiian-grown.**

1-800-338-7139 (808)322-2825



**FOR A FREE BROCHURE
OR TO MAIL ORDER
CALL YOUR NEAREST
BAD ASS COFFEESTORE.**

BIG ISLAND

The Original Store
Kainaliu, HI
(808) 322-9196

Macadamia Nut Co.
Honokaa, HI
(808) 775-7743

Bad Ass Warehouse
Alii Dr., Kailua-Kona, HI
(808) 329-8871

Waterfront Row
Alii Dr., Kailua-Kona, HI
(808) 326-4637

Bad Ass Coffee Shack
Kawaihae, HI
(808) 882-7019

Parker Ranch Shopping Ctr.
Kamuela, HI
(808) 885-7191

Uncle Billy's Hilo Bay Hotel
Banyan Dr., Hilo, HI
(808) 322-2825

Keauhou Shopping Ctr.
Keauhou, HI
(808) 322-0100

OAHU

1110 Pensacola St.
Honolulu, HI
(808) 531-5882

Hickam Air Force Exchange
Honolulu, HI
(808) 423-0995

159 Kaiulani Ave.
Waikiki, HI
(808) 926-5662

MAUI

1280 S. Kihei
Maui, HI
(808) 875-8558

Lahaina, Maui, HI
Opening summer 1995

MAINLAND

Old Town, San Felipe St.
Santa Fe, NM
(505) 242-5409

104 W. San Francisco St.
Santa Fe, NM
(505) 989-7877

Central Ave.
Albuquerque, NM
(505) 247-1331

Bourbon St.
New Orleans, LA
Opening April 1st

Telluride, CO
Opening Soon

272 West St.
Keene, NH
(603) 355-8859

CANADA

Ottawa, Canada
Opening soon

South Point: Land of Discovery

Ka'u Region

The actual place where Polynesians landed will always remain a mystery, but it was likely somewhere near the southern tip of the Big Island. This area seems a probable place because their approach would be from the South where all of Polynesia lay. When sailing North, the Big Island would be the first island they would see, and South Point would be the nearest landfall. Aside from the logic of such a choice, there is archaeological evidence supporting the supposition of a landing near Ka Lae, as the Hawaiians call the most southern tip of the island of Hawaii.

Excavation of lava tubes, that were used as shelters, near Kailikii and Waiahukuni, villages four miles Northwest of the Ka Lae, indicate people were using them by A.D. 750. There is other evidence that indicates people first were in the area as early as A.D. 200.

The cliff near South Point Park is a common mooring place for the modern day fishermen who find these waters a rich resource. From the precipice the drop is about forty feet to the ocean's surface, but the cliff base goes down another thirty feet below the surface of the water. Ladders, hung to make access to the boats easier, swing freely in the air just above the sea. The cliff is deeply undercut.

In the heat of the day the water looks inviting. It is so clear the bottom can be seen plainly. For some there might be a temptation to leap into the cool water, and climb back up the ladder. It looks inviting, but don't do it. A swift current runs along the shore. The flow will carry anyone in the water straight out to sea. It is called the Halaea Current, named for a chief who was carried off to his

death.

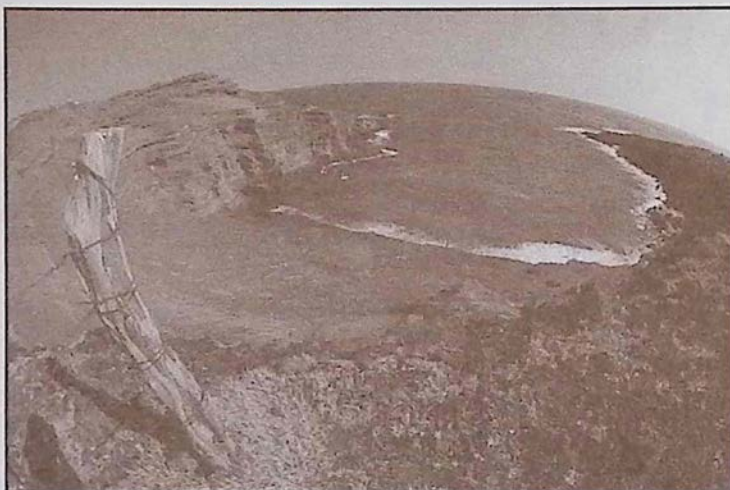
One of South Point's most famous scenic spots is Mahana Beach, also called Green Sands Beach because it has a distinctive golden green color. Although none of the fragments in the sand are large enough for jewelry purposes, the beach is composed chiefly of peridot, a semiprecious gemstone.

These tiny green gems are a silicate, one of the many families of quartz, which cook out of the basaltic magma over time. (They are apparent as green flecks in the raw lava stones used to build the columns and walls of the Jagger Museum at Kilauea's Volcano National Park.) As lava reached the coast, erosional forces, and the specific gravity of the stones, perhaps are responsible for the accumulation of such a large quantity of the granules that produced the green sand beach.

When looking at the severe landscape of the whole area it is hard to visualize what a delightful land it must have been about fifteen hundred years ago

when people first lived there. They came to a lush land, but one with few food plants. Soon, in just a few seasons, the introduced food plants bloomed and produced their fruits. Over the centuries the land became one great garden. Hawaiians were not farmers, instead, they were the world's greatest gardeners. The soil was never tilled by beasts or machines, but always by hand. In the mild climate, there was no need for an extensive annual harvest. Only the food needed for the day was gathered from the garden. Intimate working with the land made Hawaiians expert in how to get the most from a given plot of soil. Today the small villages of Pahala and Naalehu exist near the sea in the southern district of Kau. The remote setting of these towns is supported by home cooked goodness and fresh local fruit at the Naalehu Fruit Stand. Becky's Bed and Breakfast, an affordable option for lodging and Bougainvillea Bed and Breakfast with nights and breakfasts to remember offer visitors a couple of alternative and comfortable lodging opportunities in the area. Its quaint setting is still only thirty minutes

to Volcano Village if you are moving around the island. Kau landing, the progressive local newspaper, focuses on the issues that affect the entire community of the Big Island can be found at numerous locations around the island. A subscription to Kau Landing allows visitors the opportunity to stay in touch with Big Island news. See their ad on page 29.



South Point's Mahana Beach or Green Sands Beach.

Photo by Michael Stewart

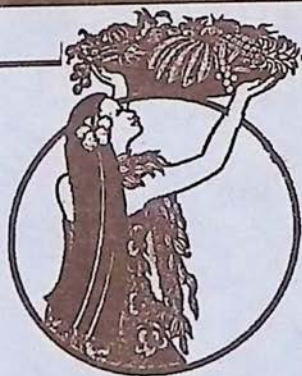
BECKY'S

Full Breakfast *All You Can Eat*
BED and BREAKFAST
Southern Most Town in USA

Phone or Fax: (808) 929-9690 Off Island: 1-800-235-1233

Rooms Comfortable, affordable, with cable TV, private bath, queen or two double beds. Rates \$38 and up with full breakfast. Children welcome. Close to: Black and Green Sand Beaches. Swim with the Turtles, Golf courses or Volcano Park. Or after a long day on the Island just relax in our Whirlpool Spa and Star gaze. Location is the most southern town in the USA on Hwy. 11.

25% Off
on 4 day stay or longer



Southernmost point in U.S.A.

Naalehu Fruit Stand

"A stop in good taste"

Tropical Fruit Breads • Cookies • Pies • Giant Sub Sandwiches • Pizzas
• Garden Burgers • Hot Soups • Fresh Salads • Fresh Juices

Try Our Macadamia Nut Pie!

It's the perfect rest stop on the way to Volcano!
Sundry and Souvenir items available
Free souvenir with purchase
P.O. Box 31 Naalehu, HI 96722 (808) 929-9009

Bougainvillea Bed and Breakfast



Dusk at South Point's Bougainvillea B&B

"Nights and Breakfasts to Remember"

808-929-7089

1-800-688-1713

Details in our B&B listing
page 34



Open Daily at 9 am
on Hwy 11

Kilauea Expedition

Volcano

*as traveled and written
by James Pinnock, 1902*

(excerpt from *Wander Years Round the World*, published in 1904)

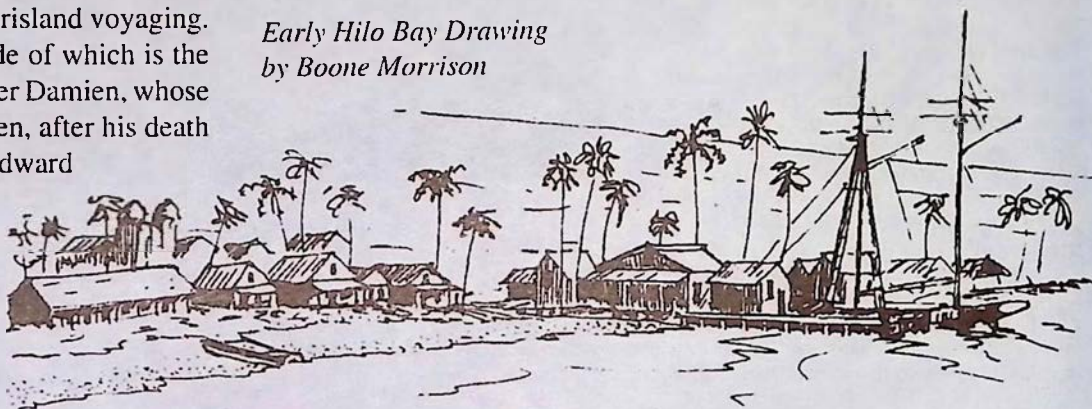
15th April, 1902. We set off today on a four days' expedition to the island of Hawaii, mainly with the object of visiting the famous volcano of Kilauea. Taking only hand baggage with us, we went on board the *Kinau*, a well appointed little steamer built in Philadelphia thirty years ago, and now employed upon this interisland voyaging. We passed the island of Molokai, on the north side of which is the leper settlement so intimately associated with Father Damien, whose name is not now so much venerated as it was, when, after his death in 1889, a memorial to him was erected by King Edward VII., then Prince of Wales. We did not call there, but we did at Lahaina in the island of Maui, where we landed the Territorial Brass Band, which had been playing on deck. We touched at some half a dozen other stations before reaching our destination of Hilo on the island of Hawaii, and our de-

tours added 70 miles to the run of 180 miles from Honolulu.

16th April. The weather and the temperature in our deck-cabins were delightful throughout, and we reached Hilo at nine o'clock to-

cont. on page 22

*Early Hilo Bay Drawing
by Boone Morrison*



*Old Hawaiian
Coffee*

Specializing only in 100% pure estate grown
Kona Coffee

COME TOUR OUR HISTORIC 1870 COFFEE FARM

Take a **FREE** tour of our farm for the real story of how coffee is produced. We are located off Highway 11 in Honaunau, one tenth of a mile south of mile marker 105, just after the mailbox on the mauka side of the road.

"We'll take you from the tree to the roast."

Misha Sperka (farmer/owner)

HIGH QUALITY MODERN COFFEE PULPING MILL

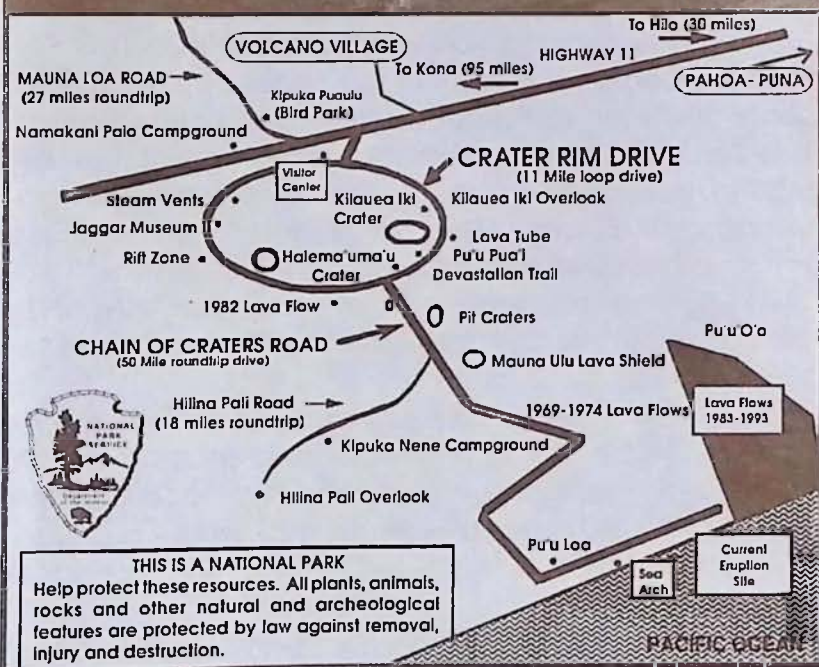
CERTIFIED ORGANIC
H.B.G.A.

(808) 328-2277

84-5042 A Mamalahoe Hwy.,

Captain Cook, HI 96704

Hawaii Volcanoes National Park and Village Information



Pu'u O'o Vent. the sight of recent volcanic activity at Volcanoes National Park.
Photo by Michael Stewart©, Molten Images.

Volcanoes National Park has one entrance, off Route 11, 30 miles south from Hilo or 95 miles east from Kona. The park is open 24 hours a day all year round and requires a \$5.00 entrance fee per vehicle which is valid for 7 consecutive days. The hiker/bicyclist/bus passenger fee for people over 16 and under 62 is \$3.00.

When you enter the park during daytime hours you will receive a park brochure at the entrance station. If you enter the park after hours you may pick up the brochure at the Kilauea Visitor Center which is located

cont. on pg. 8

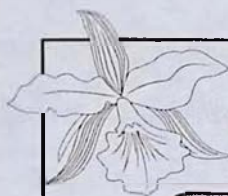
Twelve Romantic Rooms ~
Fabulous Fireside Dining Nightly 5:30 - 9:00 p.m.



KILAUEA LODGE

...only minutes from Volcanoes National Park

VOLCANO VILLAGE ~ HAWAII ISLAND ~ (808) 967-7366



Akatsuka Orchid
GARDENS

FREE GARDEN TOUR

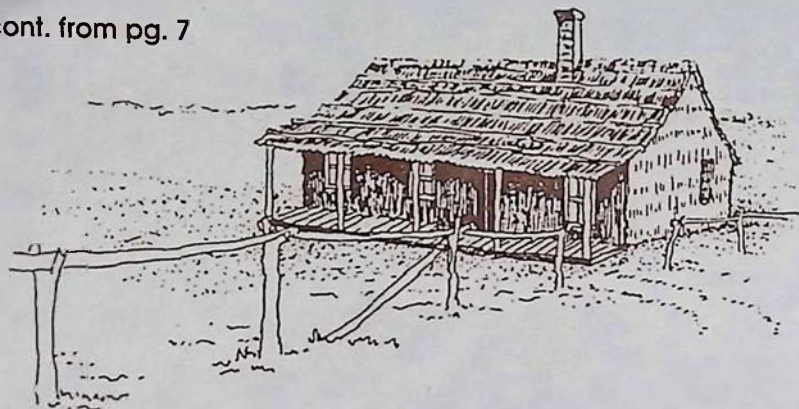
Wander in awe through our covered garden of exotic orchids and island plants then help your self to a FREE orchid blossom. We feature Certified Hawaiian orchid plants, cut flowers & anthuriums. Take them home or we'll ship them for you!

LOCATED ON HWY. 11

22 1/2 MILES FROM HILO

(808) 967-7660 P.O. Box 220, Volcano, HI 96785

cont. from pg. 7



The Original Volcano House,

Now the Volcano Art Center at Volcanoes National Park.

a quarter mile from the entrance on Crater Rim Drive. The visitor center is open from 7:45 a.m. to 5:00 p.m. daily.

Visitors are encouraged to take the time to carefully read the park regulations and guidelines. The volcano fumes that exist in the park may create a health hazard for pregnant women, infants and people with heart or respiratory problems. People at risk should avoid stopping at the Sulphur Banks, Halema'uma'u Crater and other areas where volcanic fumes are present.

Overnight trips in the park require a backcountry permit that can be obtained at no charge at the Kilauea Visitor Center. Once inside the park enjoy the 25-minute

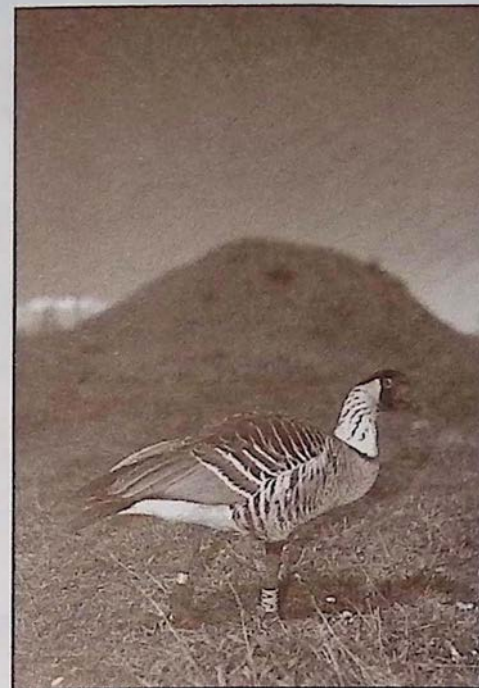
movie on eruptions shown hourly at the visitor's center. Other attractions are The Thomas A. Jaggar Museum three miles inside the park along Crater Rim Drive, The Volcano House, Thurston Lava Tube and scenic vistas. Depending on the timing of your visit you might have a chance to see the volcano erupting. A 45 minute drive to the end of Chain of Craters Road and a short hike will get you to the most recent lava flow area. The new coastline is unstable and can collapse into the sea at anytime without warning. Obey all park signs. Do not enter any closed areas. The park also offers many other hiking opportunities which are mapped out in the park brochure.

Before leaving you won't want to miss The Volcano Art Center, adjacent to the visitor center. The Art Center hosts the works of some of Hawaii's finest artists. The Center is also responsible for many of the art, cultural, environmental, and community activities happening in the park. The dates and times of these activities are listed in the Coffee Times calendar.

A reminder to drive slowly and carefully while touring the park as it will help to protect Hawaii's endangered state bird, the nene.

Lodging, gas, camping supplies and dining all can be found in Volcano Village just a short drive from the park. When in the village stop by Wood Carver's Corner. This cozy shop is filled with wood arts from around the world including Native American and Hawaiian crafts.

Because of the remote location of the volcano,



The endangered nene in Hawaii
Volcanoes National Park.

Molten Images

Professional Island
Photography by

MICHAEL T. STEWART

Specializing in Volcanic & Island Stock
Advertising & Weddings
P.O. Box 4462, Kailua-Kona, HI 96745

(808) 334-3270



Aloha Volcano Vacation Rentals

Modest to Luxurious
Accommodations,
Romantic Hideaways
for Two or Homes with
Great Family Value.

(808) 967-7683
1-800-845-LAVA

VOLCANO ART CENTER

Hawaii Volcanoes National Park
Open daily 9 a.m. to 5 p.m.

APRIL EXHIBIT: "Tribute to Kalamainu'u"
Traditional Hawaiian Fiber Arts
by Willy Grey Eagle Maglothin

**Hawaii Opera Theatre's Inter-island
tour of four mainland soloists singing
Opera's Greatest Hits**

Kilauea Theater, April 29, 7:30 p.m.
\$10 Adults, \$8 Children (VAC members - \$2 off)
Call 967-8222 to purchase tickets by credit card.

CARSON'S VOLCANO COTTAGE

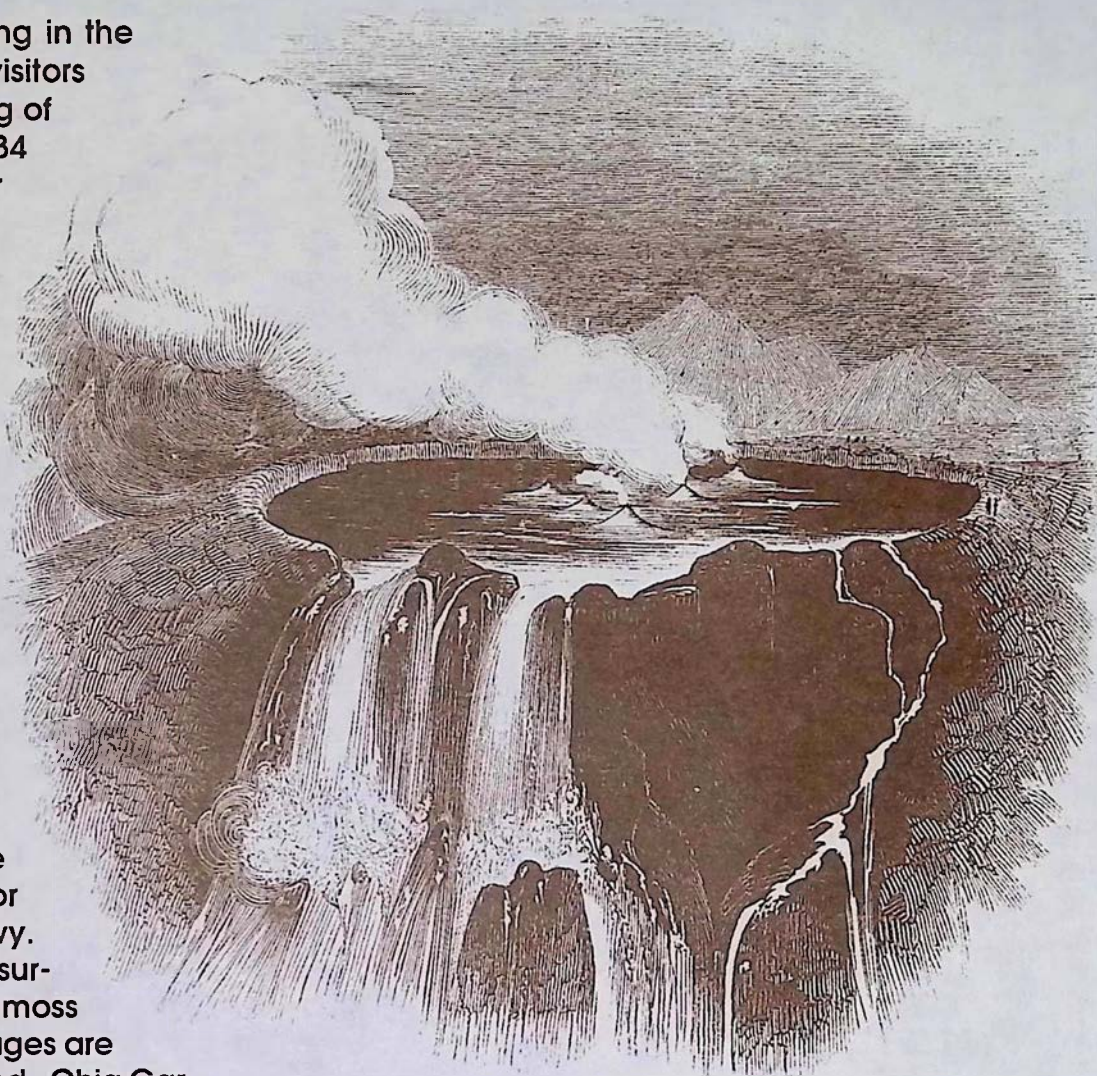
Volcano's most private and inviting B&B



Experience The True Fantasy
Of Hawaii ~ Forested Garden
setting ~ Separate Guest
Rooms & Cottages ~ Hot Tub ~
Wood Burning Stove ~
Amenities Without The Price
(808) 967-7683
1-800-845-LAVA

the numerous Bed & Breakfasts existing in the region are a favorite choice among visitors staying in Volcano. A complete listing of Volcano B & B's can be seen on pages 34 & 35 of Coffee Times. A few particular favorites are My Island Bed and Breakfast, Carson's Volcano Cottages, Chalet Kilauea and Hale Ohia Cottages. If you are looking for seclusion, Carson's Volcano Cottages are tucked away in the region's rainforest and offers guests the most in privacy as well as a hot tub and even wood burning stoves to keep you warm on those cool volcano nights. Chalet Kilauea, The Inn at Volcano, features rooms decorated with art from around the world and even a treehouse suite, a unique alternative for couples looking for that romantic getaway. My Island Bed and Breakfast, located on a five acre botanical estate, is an 1886 missionary home offering guests the choice of rooms in either the main house or garden apartments. Located off of Hwy. 11 are the private Hale Ohia Cottages surrounded by bonsai-style gardens and moss covered grounds. The suites and cottages are both spacious and comfortably outfitted. Ohia Gardens offers guests all the comforts of home with their own kitchen, lounge, TV etc. The two guest rooms are separate from the main house and have a shared bath.

Perhaps one of the most memorable dining experiences on the Big Island can be found at Kilauea Lodge, which features continental cuisine beside the historic fireplace of friendship. The mountain lodge also hosts twelve romantic rooms for overnight visitors. One spectacular stop you do not want to miss when you are in the volcano region is Akatsuka Orchid Garden. Seeing is believing when you arrive at this exotic and tropical garden. Visitors are welcome to free tours and complimentary orchids during their visit.



Print depicting the eruption of Mauna Loa in 1843. Printed in *The Illustrated London News*, Jan. 27, 1844.

For Park Information Call: (808) 967-7311 or

For Eruption Update Call: (808) 967-7977

No Booking Fee

967-7244

Volcano Reservations
SELECT STATE WIDE ACCOMMODATIONS
Bed & Breakfasts ~ Cottages ~ Vacation Homes ~ Condos
 Your Key To Hospitality
 BUDGET TO LUXURY ~ GREAT VALUE

Chalet Kilauea -
The Inn at Volcano

EXPLORE TREASURES FROM AROUND THE WORLD
Unique Theme Rooms ~ TreeHouse Suite ~ Vacation Homes
Jacuzzi ~ Fireplace ~ Library ~ Garden

Gourmet Breakfasts Afternoon Tea



967-7786



HALE OHIA

COTTAGES

RETREAT, RELAX,
RELIVE HAWAII

Volcano, Hawai'i • (808) 967-7986



Woodcarvers Corner

A Showcase of
 Hawaiian, Modern and,
 Native American Art
 Jim and Chris McLuckie, Owners

Wir bedienen auch gern in deutscher Sprache



(808) 985-8518

Historic Main St. Pahoa-Puna, Hawaii Quaint Shops, Local Food, Arts, Crafts, Theater

For visitors who want to experience the true feeling of old Hawaii, Pahoa village holds the key to this untouched past. First a rugged sawmill town then a sugar town and later a crossroad on the old railroad, Main Street Pahoa has maintained its western style storefronts and wood boardwalks in a charming turn of the century Victorian style.

Quaint shops from surf, to curio and restaurants span the flavors of the globe from Thailand, to Mexico, and Italy, making Pahoa Village one of the most pleasurable and tasteful stops on the Big Island.

Call ahead to any of the friendly shops to see if there are any special events scheduled during your visit. Pahoa has the reputation of holding some lively

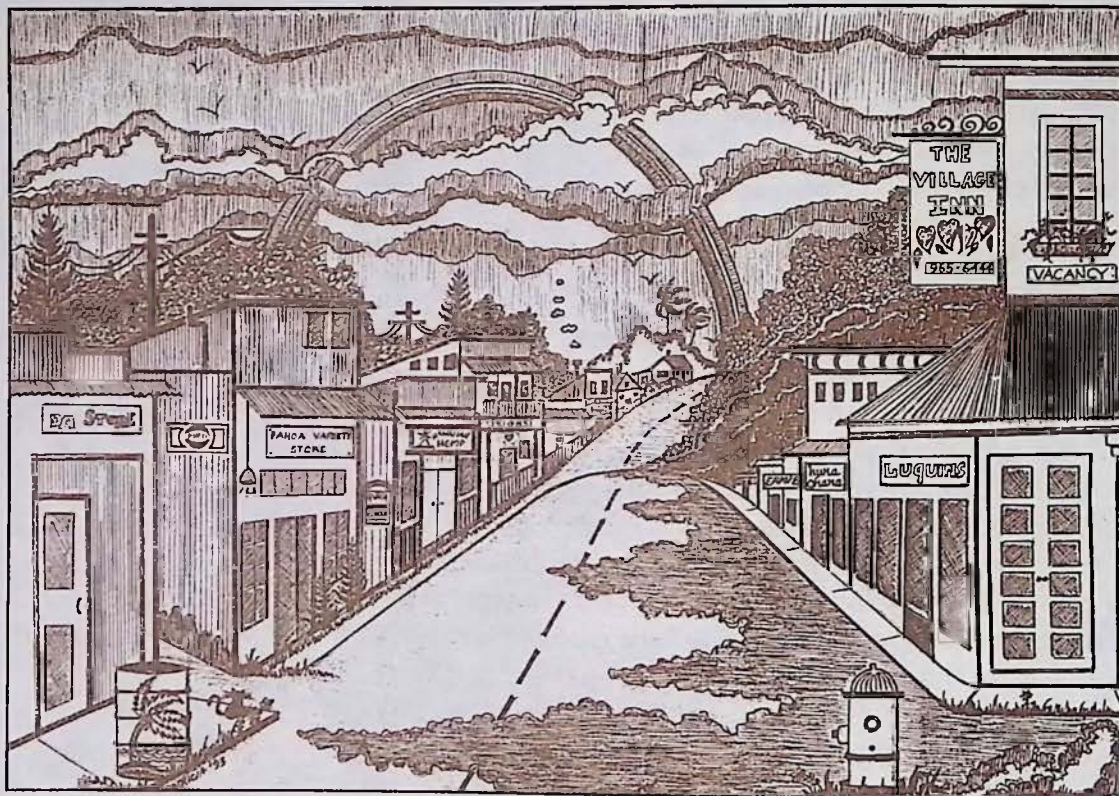
Naung Mai

Thai Kitchen

"We serve Cheng Mai,
Bangkok & Phuket style cuisine."
Vegetarian Entrees offered

Mon. - Sun. 4:30 - 8:30pm
Tue. & Sat. 2 - 8:30pm

965-8186



Drawing of Historic Downtown Pahoa Village by artist Patricia Borton



The Godmother 965-0055

Breakfast: 8-11am, Lunch:
11am-3pm, Dinner: 5-Closing

EVERYTHING HOMEMADE

Delicious authentic
New York-style Italian cuisine
Located in historic Pahoa Village

THE VILLAGE INN

**HISTORIC PAHOA
BUILT IN 1910**

P.O. BOX 1987 • PAHOA HAWAII 96778
(808) 965-6444

LODGING & HAWAIIANA
CURIO SHOP

\$39.95 double & up



huna ohana
METAPHYSICAL BOOKS
& ESPRESSO CAFE

VEGETARIAN FOOD
Open 8am - 5:30pm

Muffins, croissants, salads, sandwiches,
& 100% organic Kona Coffee.
P.O. Box 536, Pahoa, HI 96778
(808) 965-9661

LUQUIN'S
MEXICAN RESTAURANT
Chili Relleno, Carnitas,
Tamales & Taquitos

FREE CHIPS & SAUSA
with Dinner
OPEN DAILY
11 a.m. to 9 p.m.
965-9990

NATURAL GROCERIES

Puna's Organic Connection
Produce, Coffee, Grains, Beans & Nuts
Gourmet Deli and Bakery
Hours 9-9 Mon-Sat, 9-6 Sun

965-8322



Located in the Heart of Historic Pahoa

NATURAL EMPORIUM

Clothing and Jewelry from Around the World
Creations by Local Artists
Toys • Cards • Gifts
Hours 10-6 Daily

965-6634

HAWAIIAN
HEMP
COMPANY
PAHOA-HAWAII

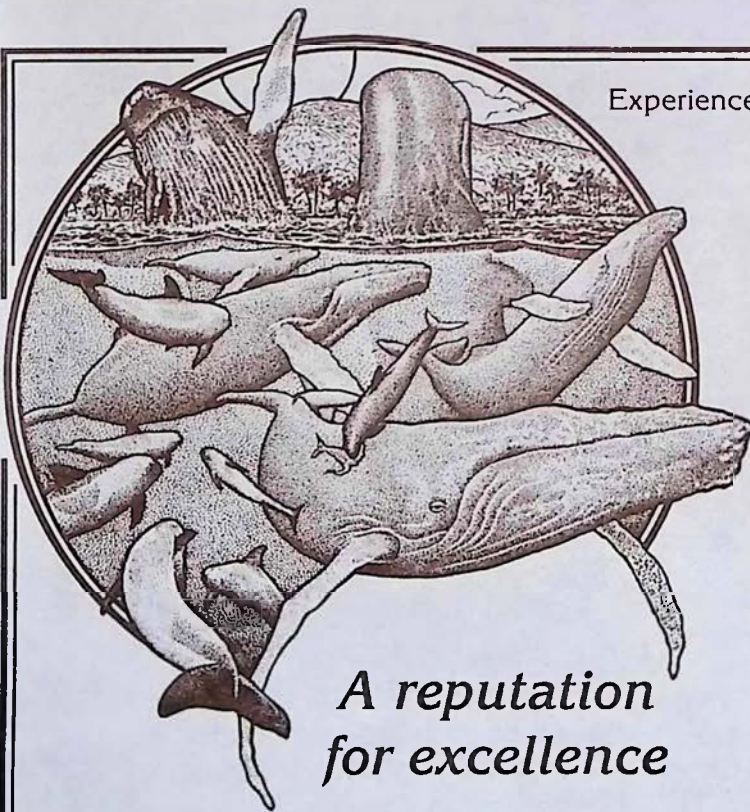
HEMP FASHIONS
CLOTHING
FOOD
PAPER
LITERATURE
& ART
(808) 965-8600
Pahoa Village

Send \$2
For our catalog of products
P.O. Box 2056, Pahoa, HI 96778

Whales of Plenty in the Waters of Kona, Hawaii



Upper Left: A curious male pilot whale "spy hops." **Lower Left:** Spinner dolphins leaping gracefully. **Center:** Hawaii's most famous winter visitor, the humpback whale. **Lower Right:** A giant sperm whale "spy hopping" off the Kona coast. **Upper Right:** The acrobatic breaching of two humpback whales off the Kona coast. All photos by Dan McSweeney©.



*A reputation
for excellence*

3 Hour Daily Cruises
Special Family & Kamaaina Rates

HELP PROTECT THE WHALES.
Proceeds benefit whale conservation.

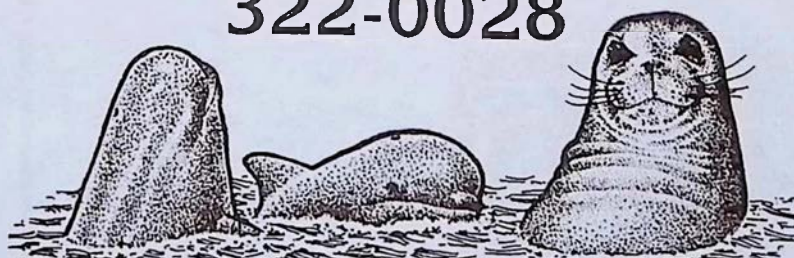
Experience is the difference between Whale Glimpsing and Whale Watching!

Kona's Only Guaranteed
Year-Round
Whalewatch
With Capt. Dan McSweeney

Experience the whales with a devoted professional researcher/guide who has spent the past 20 years and over 30,000 hours around Hawaii's whales.

Call for information & reservations:

322-0028



EAST HAWAII AND HISTORIC HILO

When you talk about the old Hawaii, at least the one that hasn't been touched as much today by the long arms of commercialization and development, you cannot help but to mention the East Coast on the Big Island. At the center of all this is old town Hilo, seeing a revitalization of spirit thanks to the effort of the Downtown Hilo Organization is busy restoring and preserving the storefronts of this yesterday town. Aiding this effort are the wealth of new businesses occupying Hilo's old buildings.

One of the brightest spots has been the renovation and remodeling of the S. Hata Building by **Cafe Pesto**. This restaurant has maintained the building's Renaissance Revival style of architecture and filled the air with smells of wood oven baked pizza and Pacific Rim Italian cuisine.

To add to this old Hawaii feeling are the daily Suisan Fish Market Auction and the Hilo Farmer's Market which is held every Wednesday and Saturday in Downtown Hilo.

Outside the town to the north are the Hawaii Tropical Botanical Garden, located along a 4 mile coastal scenic route, and Akaka Falls with its self guided path-

ways that take visitors over ravines and past several other waterfalls before ending up at the grand daddy of them all, Akaka.

When you are done sight seeing, lodging in Hilo is a snap and can accommodate every type of visitor. The magnificent and luxurious **Hale Kai**

Bed and Breakfast on the bluff above the ocean overlooks Hilo's premier surf spot, Honolii. Expect nothing less than gourmet breakfasts and plenty of privacy. Hale Kai also has available a private cottage facing a pool and ocean. If you are looking to stay within walking distance to downtown Hilo stop in at the affordable **Wild Ginger Inn** which features a jungle garden and stream setting overlooking Hilo Bay. If a stay in the Hawaiian countryside is what you are seeking, head seven miles north out of town to Papaikou and check in at **Hale Lamalani** vacation rentals. Situated at 1,000 feet above sea level this country retreat offers plantation style lodging with all the serenity one could ever desire.

After leaving Hilo you don't want to miss the drive north to Waipio

Valley which takes you over scenic gorges that were once crossed by cane hauling trains in the hey day of sugar cane production. The plummeting waterfalls and river mouths under the extensive bridge systems leading north up the Hilo Coast are definitely an awesome sight. Akaka Falls State Park and the village of Honamu can be reached by taking Hwy. 220 off of the main route, Hwy. 19 north. See the map. Once you reach the Park a short paved hike will trail you past a network of smaller waterfalls, lush and colorful tropical foliage to the plummeting Akaka Falls. Its accessibility and grand size make Akaka Falls a popular stop along this eastern coast.

Blue Hawaiian Helicopters, located at the Hilo International Airport, can take you for an air adventure you are not soon to forget. Whether you fly over magnificent waterfalls, or soar over an active volcano Blue Hawaiian is certain to take you places few would dare venture to on foot. The tour also includes a free personal video tape of your flight. For reservations see their ad below.

Hale Lamalani (House of Heavenly Light)

A Hawaiian Hideaway, Vacation Rental & Hostel

Serenely situated with Inspirational Ocean, Mountain, Hilo Bay and Volcano Views from \$15 to \$55/Night! With Breakfast Fixings

Located 5 miles north of Hilo above Botanical Garden and before Akaka Falls at the gateway to Hamakua.

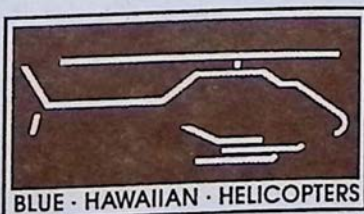


Phone/Fax: (808) 964-5401, Outside Hawaii 1-800-238-8BED
R.R. 1 Box 206, Papaikou, HI 96781



Print by Dumont Durville of Hilo's
Waiakea village. Circa 1830

We'll take you places
where your feet can't go!



ON THE BIG ISLAND:
961-5600
IN MAUI:
1-800-745-BLUE (2583)

HISTORIC HILO

Historical information and map provided by the Downtown Hilo Organization whose interests involve the preservation of Old Hilo, Hawaii.

This self-guided walking tour of historic Downtown Hilo will take about one hour if walked continuously. However, you are encouraged to go at your own pace and spend additional time discovering and exploring that which interests you.

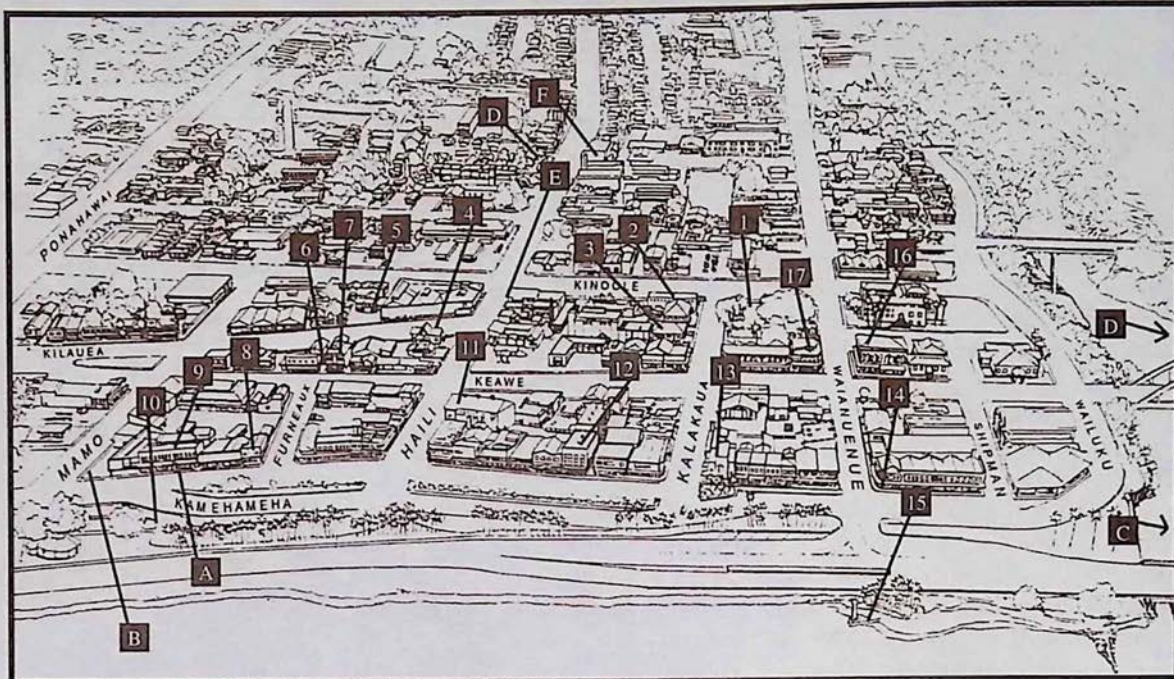
The seventeen stops along the way will provide you with information about the town from 1870 to the present. The history of Hilo begins much earlier, however, with the arrival of the Polynesians in 1100 A.D. They eventually inhabited the shores of Hilo Bay, farmed their crops, fished and traded their goods with each other along the Wailuku River. Changes came to this life-style upon the arrival of missionaries who brought with them new ideas, education and Christianity.

Hilo became a stopping place for explorers curious about the active volcanoes, whaling ships and traders. By the 1900's a number of wharves had been constructed, the breakwater was begun and the railroad connected Hilo with other parts of the island. Hilo became the center of commerce. Two destructive tsunamis, in 1946 and 1960, caused a shift in the location of Hilo's government and commercial life.

Today, historic Downtown Hilo is alive and bustling with renewed energy. New and old businesses alike are meeting the challenge of revitalizing our city center while preserving the historic character which remains very special.

Historic Structures

1. Kalakaua Park
2. Old Police Station
3. Hawaiian Telephone
4. Central Christian Church
5. Taishoji Soto Mission
6. Furneaux Lane
7. Ancient Order of Foresters Building
8. Furneaux Building
9. S. Hata Building
10. Bayfront
11. Palace Theatre
12. S.H. Kress Company Building
13. First Hawaiian Bank Building
14. Koehnen's Building
15. Landing Wharf
16. First Trust Building
17. Pacific Building



Dining, Lodging and Other Sights...

- A. Cafe Pesto (*Pacific Rim Cuisine*)
- B. Hilo Farmer's Market
- C. Hale Kai B&B
- D. Wild Ginger Inn
- E. Lyman Museum



whether you choose...

WOOD-FIRED PIZZAS, FINE PASTAS
OR
SCRUMPTIOUS DESSERTS
you will always get...

AN ADVENTURE IN TASTE

CAFE

Pesto

HILO BAY

OPEN FOR LUNCH & DINNER
Historic S. Hata Bldg., Hilo Bay, 969-6640
Live Hawaiian Music on Sundays, 6pm - Closing

Hale Kai
Bed & Breakfast
Bjornen

Private Cottage also available

Double occupancy is \$80 and up

★★★★

A 4 Star Bed & Breakfast on the bluff facing the ocean and overlooking Hilo Bay and Honolii surfing beach

VERY PRIVATE, POOL, HOT TUB, BREAKFAST, Kona Coffee, Private Baths, Well Decorated Rooms

111 Honolii Pali, Hilo, HI 96720

(808) 935-6330 Fax 935-8439

1940's Plantation style B & B with jungle garden & stream. A nonsmoking Inn.

Wild Ginger Inn

\$39 private bath double with breakfast.

100 Puueo St. Hilo, HI 96720

Call 808-935-5556

BED & BREAKFAST

NO FRILLS SPECIAL: 7 days for \$150

HONOKAA

CURIO TRADITION SIMPLICITY SINCERITY

For years the town of Honokaa sat idle, its home town theater empty, local store fronts ghostly quiet, and streets void of the bustle that once rumbled down Mamane Street during the boom days of the Hamakua Sugar Company, an industry that for the last century has been the life blood of the people in this region. Since the decreasing activity of sugar production over the years and the recent decision this year to halt sugar production all together, the local citizens of Honokaa have redirected their energy and begun one of Hawaii's most spirited movements of rejuvenation. Local merchants have taken the initiative to reopen some of the closed doors in this picturesque town, including the local ice cream parlor, now called **Simply Natural**, outfitted with an old fashioned soda fountain and spinning stools. Other shops such as the **Honokaa Marketplace Inc.** as well as many curio shops overflow with Hawaiian memorabilia, local crafts, and wearable arts. Home town cooking at **Mateo's Pizza**, **Jolene's Kau Kau Korner**, and **Mamane Street Bakery** adds to the distinctly local flavor of what Mateo's Pizza owner, Alex Mateo, proudly calls, "The New Honokaa". Included in this new Honokaa is the town's farmers market that has become a weekly event in the downtown area in front of the Historic Botelho Building. The market is open each Saturday of the month.



As Hawaii's old theaters are becoming more and more popular the citizens of Honokaa celebrated the reopening of their own **People's Theater**. The doors have officially been opened and evening feature films can be caught every Friday, Saturday and



Left: Waipio Valley's most bountiful food source, taro.
Above: Honokaa Farmer's Market Entertainment.

Sunday evening at Honokaa's historic theater.

A locally produced gift item that is manufactured in Honokaa also adds to this region's unique offerings. **Hawaiian Brushes** uses the exotic hardwoods of Hawaii to hand-make hair brushes. The wind- and rain swept slopes of the Hawaiian Islands grow the

Michael Stewart

Open Daily
in Honokaa



Banana Taro
Pancakes
Fresh Deli
Sandwiches
Old Fashion
Ice Cream Sodas
Soups of the Day
Hilo Homemade
Ice Cream
Even Taro
Ice Cream

Now Serving Breakfast
775-0119

Historic People's Theater

Now Showing
Feature Films
Every Friday
& Saturday

Mamane Street,
Downtown Honokaa
775-0000

Mateo's
PIZZA
Open Daily at 11 a.m.

Spaghetti
Salads
Veggie Pizza

SPECIALS
2nd Medium
\$7.00
2nd Large
\$9



HONOKAA
775-0944



Located in
Honokaa

Open
Mon - Sat
10 am - 8 pm

Serving the Island's Favorite
Local and American Dishes

What better place to share
a little something with the
community and travelers
from afar.

dine in 775-9498 take out



Visitor
& Local Information

(Farmers & Cultural Market Saturday)

**Country Goodness
Honokaa!**

ARTS • CRAFTS • FLOWERS
(coop store daily)

Historical Photos/Heritage

775-9239



HONOKAA
MARKETPLACE INC.
"The Mary Guava Shop"

Second hand Furniture •
Antiques • Collectibles •
Clothing • Craft Classes

775-8255

P.O. Box 1813
Honokaa, HI 96727

**MAMANE
STREET
BAKERY**

• Cafe •



RETAIL/WHOLESALE
open daily

MORE THAN JUST A BAKE SHOP

A must see on your vacation!!!

Located in downtown Honokaa our gourmet bake shop has just expanded to include a unique Hawaiiana Room constructed out of local woods.

A NEW HAWAIIANA GIFT SHOP

Surrounded in a tropical wood decor we offer the finest Kona Coffee, pottery, prints, cards and paintings by local artists. Browse or relax in our cafe dining area while you enjoy such treats as espresso, cappuccino, croissants, cookies and other deserts.

(808) 775-9478

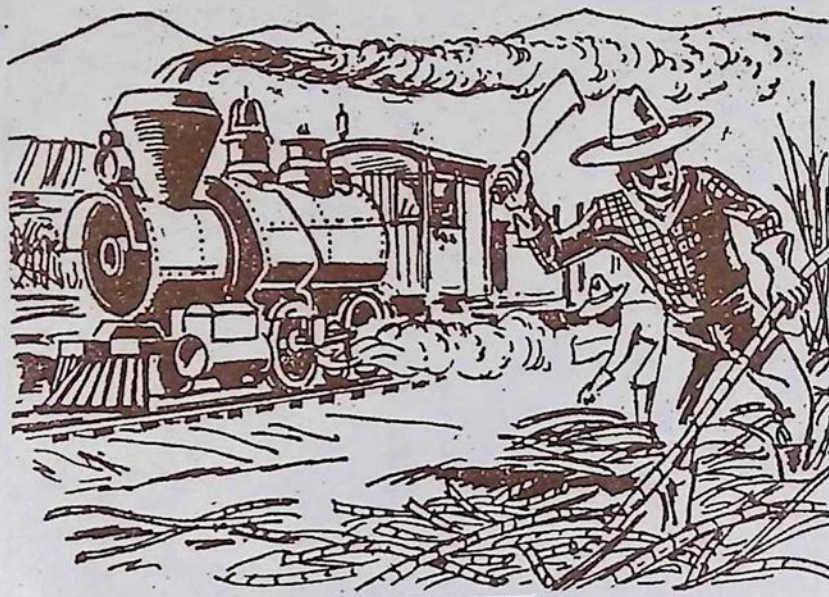
HAMAKUA

SUGAR

NUTS

WATERFALLS

TRANQUILITY



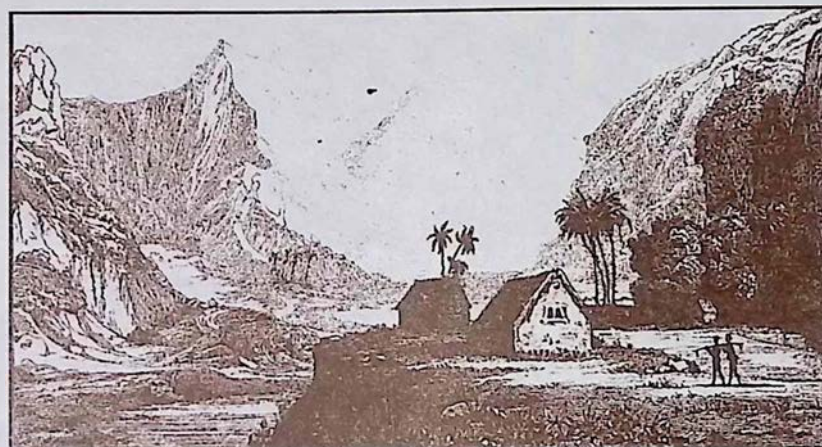
rare and exotic hardwood Koa, a member of the Acaia family which was used exclusively by the ruling Ali'i in ancient Hawaii. These Hawaiian koa trees can provide many varieties of color and grain characteristics and Hawaiian Brushes hairbrushes and mirrors are made of the finest type known as "Curly" or "Fiddleback." For more information refer to their ad on the back page of this magazine.

Also located in Honokaa is the **Bad Ass Hawaiian Macadamia Nut Plantation** which is located down the hill from Kau Kau Korner. The plantation allows visitors the opportunity to view the inner workings of a macadamia nut factory. Factory creations fill the store shelves and will undoubtedly make your taste buds dance when you try them. Also featured is the plantation's own bake shop as well as a complete line of Bad Ass Coffee.

Legend has it that it was in Waipio Valley, "the land of the falling

water", the great King Kamehameha, as a young boy, received his leadership training and first learned to surf. Today, family ohanas, "houses", still dot the landscape which is separated by a river that leads into the open sea. Local farmers and their families continue to make their way of life from farming taro and fishing off the sandy shores of this peaceful and remote valley floor.

Outside of Waipio Valley and Honokaa town are other early and small settlements of the Hamakua region such as Paauilo, Kukuihaele and Laupahoehoe all filled with a rich and local culture that happily survives in this region of the Big Island. New doors will continue to open for all of Hamakua as a period of change sweeps through the land with the fall of the sugar empire and the rise of small businesses in Honokaa.



Waipio Valley in Hamakua was once populated by ancient Hawaiians who farmed extensive fields of taro. Families living in the valley today still cultivate the taro plant which is made into poi. Poi remains a staple in many modern day diets and is quite good when used with other local products. Honey, sugar, coconut and poi baked in an imu or oven is the favorite of *Coffee Times*. Ask any Hamakua local for the details of preparation, most love to share the secrets of good poi making. **Print by Doms, circa 1785.**

HONOKAA-HAMAKUA FARMERS and CULTURAL MARKET

Market held every Saturday beginning at 8:30am in front of the historic Botelho Building on Mamane Street in downtown Honokaa. Call Hal Hisa Yamato at 775-9239 for more information.

Weekly Small Town Hawaii Celebration

features fresh local produce, food, crafts and entertainment of some sort.

The Bad Ass Coffee
Company isn't crazy.
Just Nuts.

The Bad Ass Macadamia Nut Co. of Honokaa

Visit our factory store in Honokaa Town for some truly Bad Ass macadamia nut creations. Like our freshly-roasted mac nuts in creamy rich milk chocolate, or our macadamia nut/coconut butter brittle. Of course, they're even better with a hot cup of 100 percent Hawaiian-grown Bad Ass coffee.



For Factory Tours, call 775-7743.

Sure you can
put cream in your
Bad Ass Coffee.



But we're not gonna
get it for you.

Bad Ass Coffee. 100 percent
nothin' but Hawaiian-grown.

1-800-338-7139 (808)322-2825

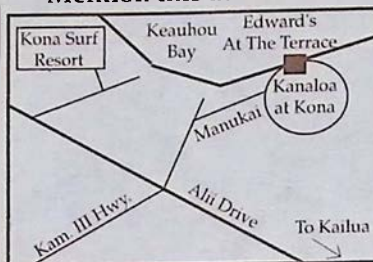


Edward's

AT THE TERRACE

Serving Breakfast, Lunch & Dinner 322-1434

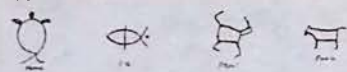
Mention this ad for a free after dinner cup of Kona coffee



"Ki'i Pohaku"

Petroglyph Bingo

FUN EDUCATIONAL GREAT SOUVENIR



Includes 6 playing cards (5"x7"), 40 calling cards (2 1/2"x3 1/2"), & an instruction sheet.

Published & Printed in Hilo, Hawaii

Store Locations: Cook's Discoveries, Alapaki's, Pueo Bookshop, Up Country Quilters, Volcano House, Hawaii Tropical Botanical Garden, Native Books, Oahu

Also available is the Hawaiian Bingo Game

A Fun Way to Learn Hawaiian

For more locations call

969-1521

KONA CAFE

GOURMET "ESTATE" KONA COFFEE

"Our 100% Pure Kona Coffee is grown in Paradise, custom roasted in San Francisco and our customers rave about it!"

- Mail order for home or office.
- Available in Medium, Dark and French Roast.
- \$15 per lb. + shipping (\$3.50 for 1 lb. \$1.50 for ea. addl. lb.)

Call KONA CAFE at
1-800-900-KONA



KONA MARKETPLACE

CINEMAS

Call For April Feature Film Listing

FREE 3 HOUR PARKING WITH VALIDATION
at the Kona Marketplace on Alii Drive, Kailua-Kona

showtime info. call 329-4488

ONE HOUR MOTOPHOTO

FREE SET OF PRINTS

with every roll of film developed

WITH THIS COUPON

329-2080 Kona Inn 322-8091 Keauhou

Located at: Kona Inn Shopping Village (1 hour) on Alii Drive
& at the Keauhou Shopping Village (overnight service)

From the Southernmost District of Hawai'i Island

KA'U LANDING

(808) 928-6449



P.O. Box 7179, Ocean View, Hawai'i 96737

In-depth and ongoing coverage of the land, the
people and the issues that affect the present and
the future of our Big Island Communities.

☐ 1 year (12 issues) \$12

☐ Sample Copy \$1.50

HAWAII'S HOTTEST NEW MUSIC VIDEO!

HANG IN' WITH BOSCO!

A GUARANTEED "HAWAIIAN CLASSIC"
FOR RESIDENTS & VISITORS ALIKE!



... BY LAND, SEA, AND AIR ...
BOSCO DELIVERS A UNIQUE, ONE-OF-A-KIND
MUSICAL VIDEO CRUISE, AROUND THE
SPECTACULAR ISLAND OF HAWAII!
~ BOSCO STYLE ~

GREAT GIFT IDEA!
MUSIC, COMEDY, AND AWESOME BEAUTY!

FOR FAMILY FUN! ... THIS VIDEO HAS IT ALL!!
AVAILABLE IN 50 LOCATIONS ISLAND-WIDE

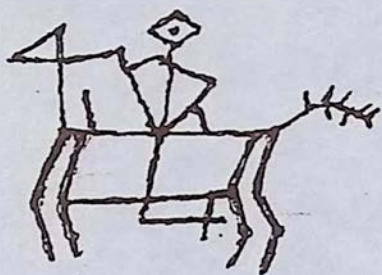
OTHER ISLANDS, AND
MAINLAND ORDERS ETC.

WE SHIP FREE!

BOSCONOVA PRODUCTIONS
P.O. Box 245, Honolulu, HI 96728
1-800-85-BOSCO (822-6804)

Waimea Country

Snow Capped Mountains and lush rolling pasture lands

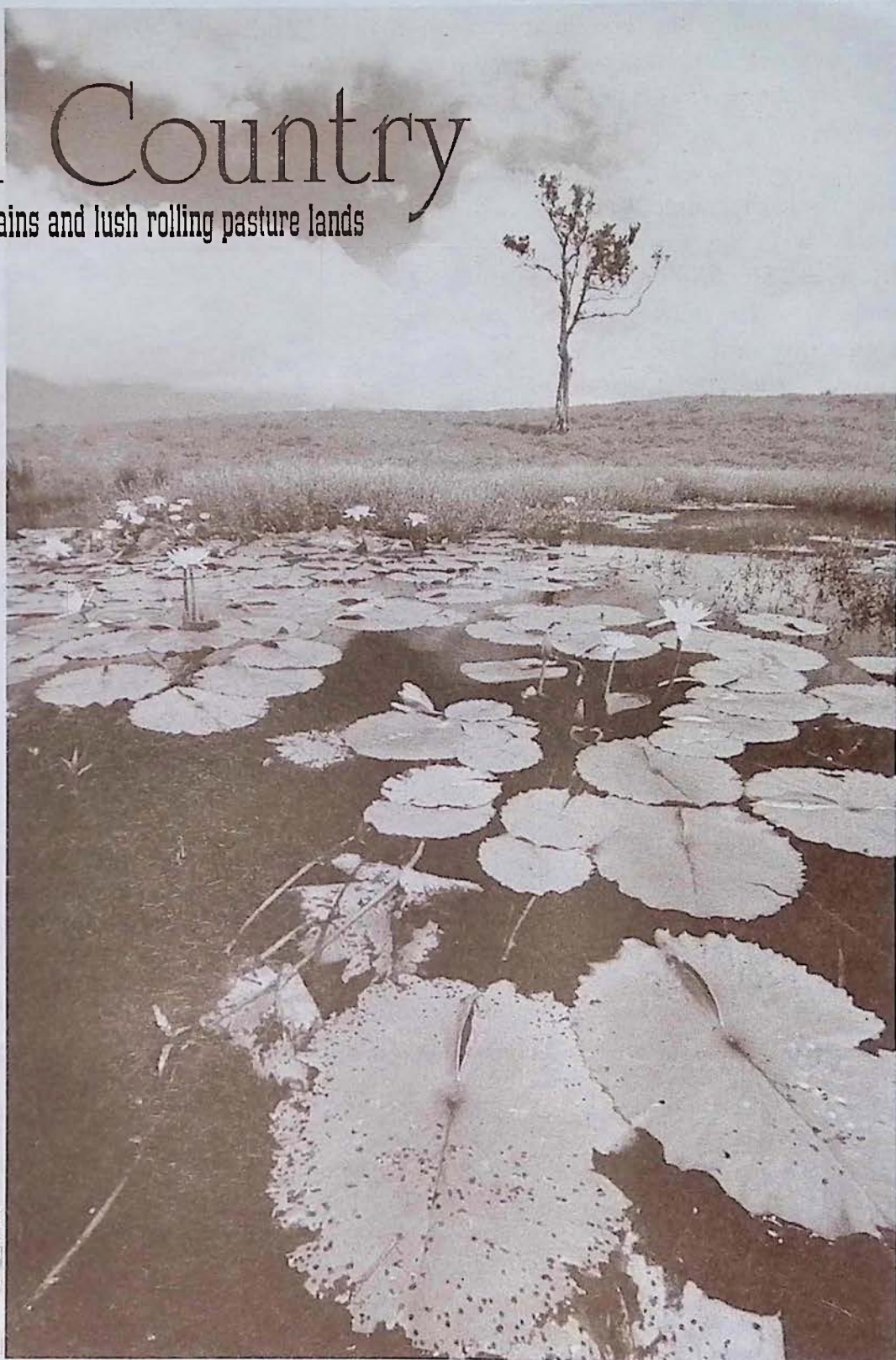


Between snow capped Mauna Kea and the Kohala mountains the green hill-sides of North Kohala roll along under wispy white clouds, and afternoon rain-bows frequently stream their way from the skies above Waimea. Inside this landscape herds of grazing cattle can be seen meandering their way through sloping pastures filled with cactus and dry underbrush as Hawaiian cowboys called paniolos still ride horseback and work the ranges.

Ranching began in this region of the Big Island after King Kamehameha appointed, in 1815, a young seaman named John Parker to hunt and shoot the herds of wild cattle whose population had grown uncontrollably since their introduction to Hawaii in 1793. Parker, who accomplished his mission, managed to domesticate a herd of his own before marrying a Hawaiian chiefess. The marriage helped Parker to acquire the land that would later

continued on pg. 18

Michael Stewart



Discover the Best of Hawaii AT COOK'S DISCOVERIES

Open daily 10 a.m. to 6 p.m.

In Historic Spencer House circa 1850 - Waimea Center Next to McDonalds (Hwy 19)

(808) 885-3633

Discover proudly made in Hawai'i treasures including koa, sandalwood, coconut, mango & avocado boxes and bowls. Hawai'ian books and language tapes. Hawai'ian music and hula implements. Hawaiian quilts, collectibles and authentic reproductions of ancient palaoa, tapa beaters, fish hooks, squid lures. Island wear by Nike'u, Sig Zane and Island Cowboy. Woven lauhala. Feather, Ni'ihau, wiliwili, kukui and puakenikeni leis. Custom sterling jewelry by former Cartier goldsmith and Mings. Originals and prints by distinguished Island artists including Herb Kane, Harry Wishard, Kathy Long and Doug Po'olua Tolentino. Pure Organic Kona coffee, triple chocolate chunk cookies, fresh Waipi'o poi and poi cake, lemon-macadamia and guava-rum truffles. Even Poi Dog Biscuits! Many goodies under \$15! Remember... Buy Hawaii.



be used to found his 250,000 acre ranch in 1847. Today's existence of Parker Ranch as one of the largest ranches in the United States gives the outsider an idea of the magnitude of its size.

Today, the town of Kamuela, more often referred to after its district name Waimea, is a town that still surrounds itself with a ranching lifestyle. The brightly colored Victorian houses and shops, tidy yards filled with flowers and skeleton remains of wagons and wheels gives visitors the opportunity to see yet another sphere of the diversity of cultures that exist in Hawaii. Beginning a tour of Kamuela with a cup of coffee and a bite to eat at **The Waimea Coffee and Company**. The coffee shop boasts the largest selection of gourmet coffees from around the world as well as a healthy selection of lunch items that includes

Michael Stewart



a daily soup, quiches, croissants, pastries and a gourmet groceries pantry. The shop is nestled inside Parker Square beside Waimea General Store. Contributing to the ambiance of Parker Square is **Bentleys**, which s always revolving its inventory to keep the character of the shop fresh. Cookbooks and kitchenware including stemware and fine

Shops of distinction.

PARKER SQUARE

apart from the rest!

CAFÉ

MARKET



"For a Welcome Break in Your Day"

Espresso, gourmet coffees and fine teas

Iced coffees, teas & juices

Pastries and desserts

Homemade soups and salads

Unique Tee-shirts, mugs
and gourmet coffees

Outdoor seating on the courtyard lanai
at Parker Square

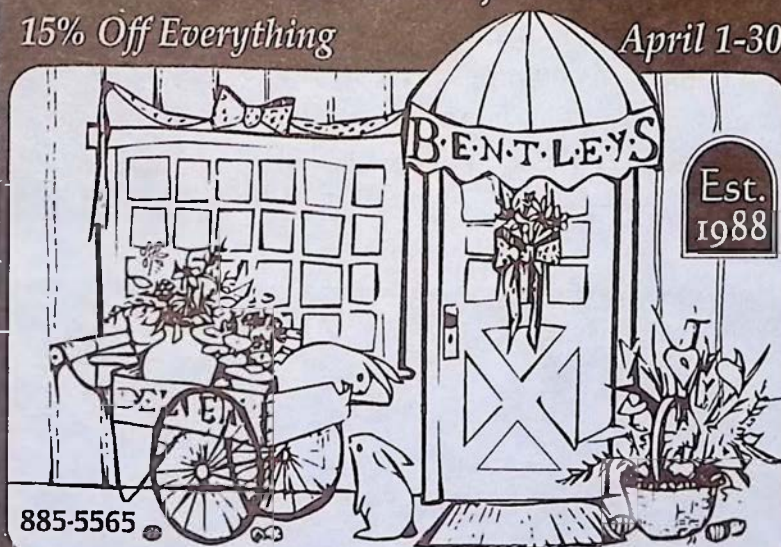
We mail-order anywhere!

1-800-854-5662 or 885-4472

B·E·N·T·L·E·Y·S
7th Anniversary Sale!

15% Off Everything

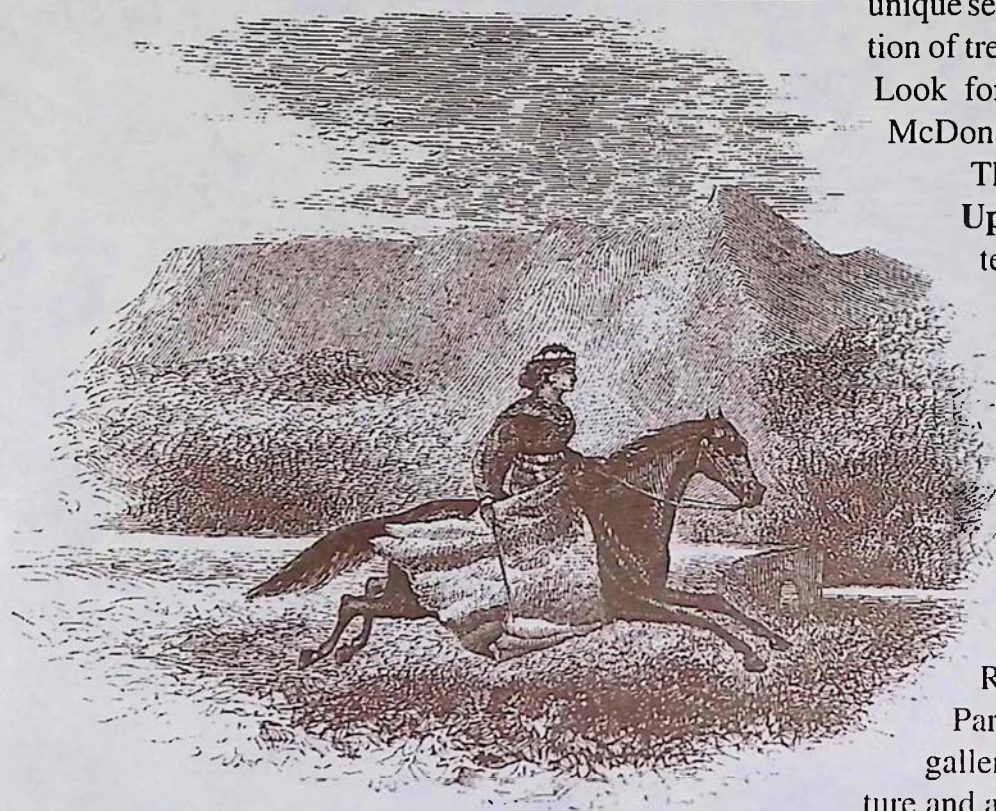
April 1-30



Collectibles • Antiques • Country Furnishings
for the Home and Garden

Parker Square • Waimea

Below: Woman wearing a pa'u (popular Hawaiian skirt of elegant design used for horseback riding during the 1800's). Print from Isabella Bird's *Six Months in the Sandwich Islands*. Opposite: Lone snowboarder ascending snow capped Mauna Kea. The mountain is often snow capped between the winter months of December to March



dishware are just a few of the items the home lover will find at Bentelys.

Make sure you don't miss stopping at **Cook's Discoveries** in Historic Spencer House at Waimea Center. The warm aloha of a 150-year-old restored home creates a unique setting for Cook's Discoveries' one-of-a-kind collection of treasures made in Hawaii by Hawaii's proud people. Look for the Hawaiian flags across from the Waimea McDonalds.

The Marushka hand-beaded jewelry is a must see at **Upcountry Connection**, located at Mauna Kea Center (located next to Waimea Center and across from the banks at the light in Waimea). This exclusive gallery is often the spot for some of Waimea's most spectacular art showings that feature the works of both local and visiting artists. Wood works by Tai Lake, Lark Dimond Cates bronzes, Herb Kane paintings, and exotic bowls by Dan Cunningham are only a few of the featured works at Upcountry. The gallery has also designed a paniolo room into its interior setting. A Reconstructed wood wall taken from the original Parker Ranch corral surrounds the corner of the gallery fronting antiques from the local ranching culture and art depicting paniolo life.

Upcountry Connection

Gallery of Art & Antiques

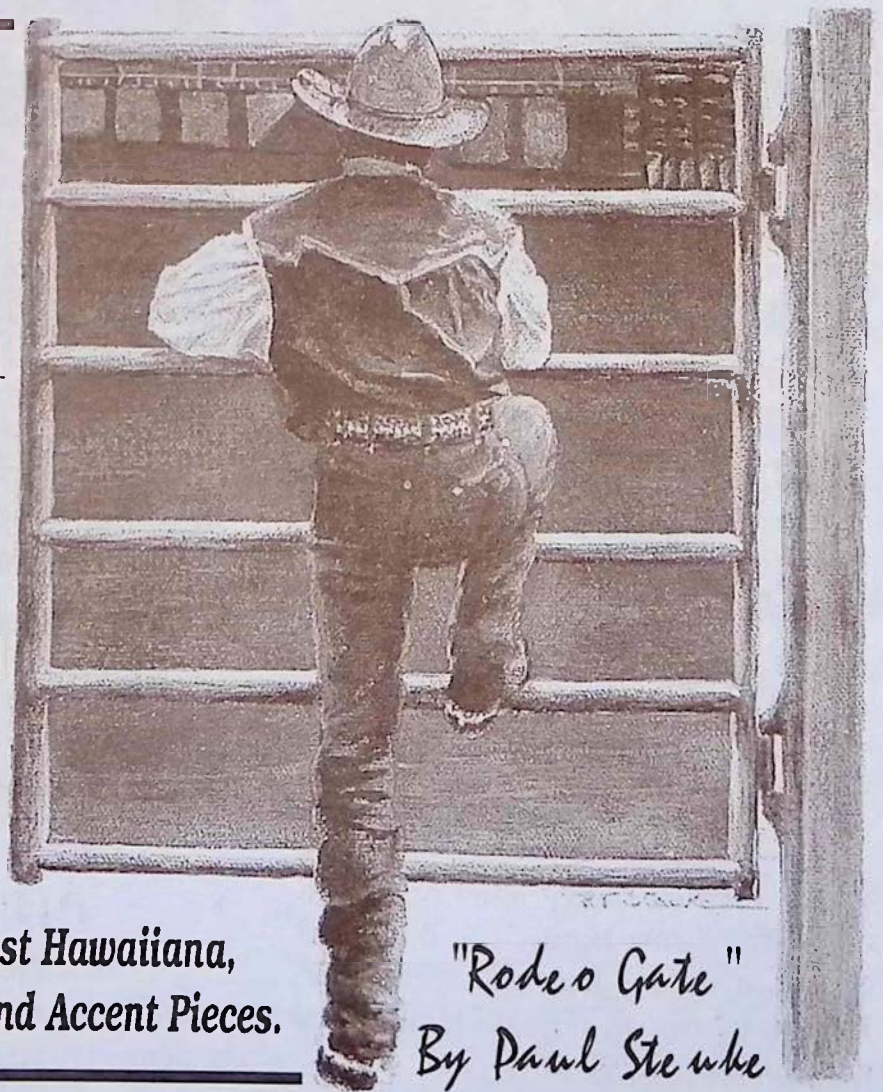
April Is Paniolo Month

Come join us in celebration of our new location!

Open Mon.-Sat. 10am to 6pm ~ 885-0623

Located at Mauna Kea Center
(Across from the banks at the light in Waimea)

Our Expanded Showroom is Full of the Finest Hawaiiana,
Paniolo Artwork ~ Koa Furniture ~ Antiques and Accent Pieces.



"Rodeo Gate"
By Paul Steube

WELCOME!

You have arrived at Hawaii's last true frontier in paradise and your stay on the Big Island is guaranteed to be one of adventure, discovery, and a true taste of Hawaiian reality. Unlike its neighbor island's Hawaii has worked hard to maintain a rural and distinctly local flavor throughout its many small towns and the people that live and work within them will attest to the genuine friendliness of the place. We encourage you to take your time while traveling the island, which shouldn't be driven in a day. So, pick a destination, take your time getting there, and relax once you do get there. You are now on Hawaiian time, and where you are going tomorrow is never as important as where you are today.

The pub.

HISTORIC HILO

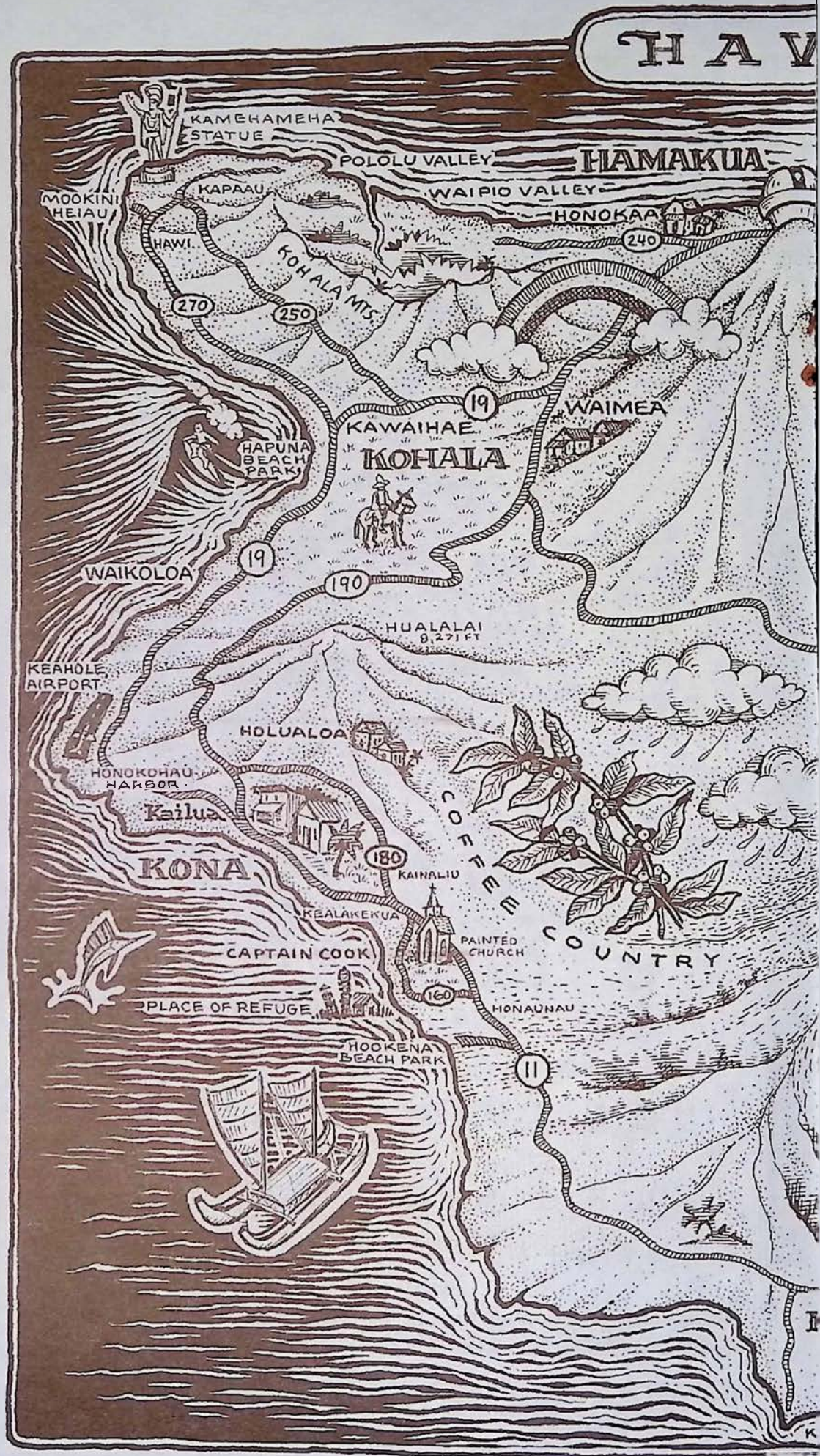
Early 20th century Hawaii happily lives on in the storefronts and buildings of this yesterday town. Outside the town are magnificent Akaka Falls and Hawaii Tropical Botanical Garden to the north. During the 1800's and early 1900's travel outside of Hilo was usually achieved by train, which was the only mode of transportation going north to Honokaa.

VOLCANOES NATIONAL PARK

Home of Pele, the Hawaiian goddess of fire. A region of unique features, volcanoes and a diverse biosphere. Volcano village hosts many alternative and unique lodging opportunities for overnight visitors.

SOUTH KONA

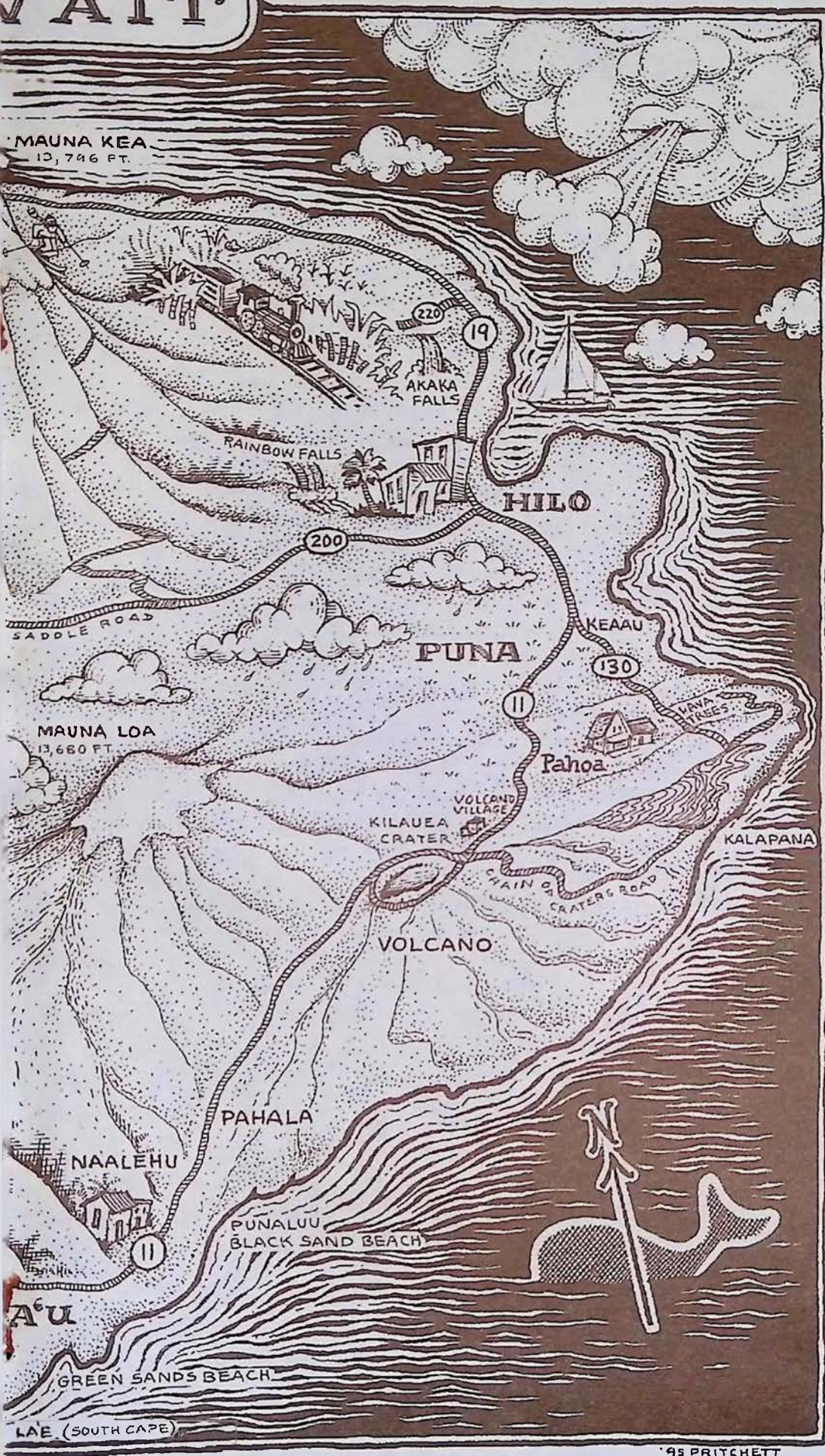
Rich in coffee, this region includes the painted church, and magnificent Kealahou Bay, the spot where English navigator, Captain James Cook was killed in 1779.



PU'UHONUA O HONAUNAU

An ancient Hawaiian village that is now a national park. Located in South Kona this spot should not be missed by visitors looking to see how ancient Hawaiians once lived.

WAI'I



WAIPIO VALLEY

Spectacular views into a lush valley of waterfalls, rivers and cascading cliffs. Taro farmers still farm the land here and horses roam wild. (4WD, horse, or a hike are necessary for access into the valley)

WAIMEA COUNTRY

In the heart of Big Island ranch country this western style town sits at the base of Mauna Kea, which is usually snow capped during the winter months. Parker Ranch and the paniolo (Hawaiian cowboy) lifestyle still shape the character of this region.

HEIAUS & PETROGLYPHS

Both can be found on the Kohala coast. The petroglyphs can be seen by following a path on top of the lava rocks at the Royal Waikoloan Resort. Puukohala Heiau is now a state park and is the spot where King Kamehameha began his effort to conquer and unite the Hawaiian Islands. The Heiau is located on Hwy. 19, near Kawaihae.

NORTH KOHALA & POLOLU VALLEY

A northern valley lookout. The road there will take you through friendly N. Kohala towns and perhaps a view of Hawaii's neighboring islands. Mookini Heiau and other historic landmarks dot the landscape towards Hawaii's northern tip.

PUNA

Hosts the rustic western style town of Pahoa in addition to wild roadside orchids, steam vents, Lava Trees State Park and black sand beaches. Truly the place to visit for the adventuresome!

SOUTH POINT U.S.A.

The southern most point in the U.S. It boasts a magnificent ocean side drive through rolling green hillsides filled with Holstein cows grazing above a coast line of rugged cliffs and crashing waves. The sleepy town of Pahala operates the last sugar mill on the Big Island.



Above: Train Tracks through fern forest in Volcano Below: Kilauea Volcano
Drawings by Boone Morrison

cont. from page 6

night after a charming voyage, putting up at the Hilo Hotel.

17th April. Being called at 5:30, we got off by the train at 7 a.m. for Mountain View, 16 miles distant from Hilo and 15 from Mount Kilauea, which is reached thence by a four-horse diligence or coach. It is said that this stage drive to the volcano is unequalled in any part of the world, being through miles of matted jungle, thousands upon thousands of the prettiest fern trees, and many rose trees, including innumerable hedge rows of mountain roses. On reaching the Volcano Hotel, finely situated opposite to and overlooking the volcano, we had luncheon; and at two o'clock we proceeded on horseback, accompanied by a mounted guide, to descend into the crater of Kilauea. This vast outer crater is 13 1/4 miles in circumference, the inner, a very active one, being considerably less in dimensions. The early descent is very precipitous, but our sure-footed mountain horses never made a mistake. The sides of the crater are covered with various tropical plants and shrubs. We at last reached the plateau of broken rough lava, with huge fissures here and there, the lava jammed together like fields of ice, resembling in places huge entangled coils of rope the size of hawsers, and of every possible shape and form. After riding about 3 miles the heat and the sulphurous steam arising from the ground became too much for the horses, and we had to dismount and secure them in a kind of small corral made in the crater out of blocks of lava.

We then proceeded on foot, the guide pointing out some very hot caves, two or three of which we tried and found almost unbearable. The pungency of the sulphur fumes arising from numerous blow-holes was around us on all sides. We had with us a few sticks which we put down some fissures only about 2 feet deep, with the result that they instantly took fire and blazed with the roar of a blast furnace. It appeared to us that the whole of this vast crater is at a white heat a very few feet beneath the surface. The fact of our being able to walk on it must, I know, appear almost incredible to those who have never visited the place. The terminal wall of the greater crater is only a few yards from the hotel.

Most of us, I think, have been inclined to imagine that a volcano must be a cone. Such has been my own idea after recent visits to Vesuvius, Etna, and Stromboli. But Kilauea is altogether different. The abyss, which is 4000 feet above the sea-level, has the appearance of a great pit, but a pit 13 1/4 miles in circumference. At the farther extremity is enclosed a smaller crater, which varies in depth from being level with the larger crater when the molten lava is in great activity, to 1500 feet when in a quiescent state. This lake-the "Hale-mau-mau"- of everlasting fire was in the latter state at the time of my visit, but looking over from the brink we found it entirely

and effectually covered with huge clouds of steam arising so as to entirely obstruct all view of the mighty lower chasm.

All the surface we now traversed was some time since a sea of fire. We were supported by a congealed mass of lava reasonably cool on the surface, but all at a white heat below: and the imprisoned forces beneath at intervals shot forth immense mountains of liquid lava.

One is forgetful of all danger in the intoxicating excitement of exploring this weird scene, with the crevasses through which one looks into fiery furnaces heated a hundredfold. A canopy of vapor hangs day and night over what appears the "Inferno." Nowhere else in the world is there a living crater to compare with it.

Vesuvius, Etna, and Stromboli sink almost into insignificance beside Kilauea, which is the largest active volcano in the world.

The lava from it threatened once upon a time to reach Hilo, as it had flowed within 8 miles of that town; and the superstition of the inhabitants led to their belief that the Goddess Pele, the tutelary deity of the volcano, had resolved upon their destruction. But the panic was stayed by Queen Kapiolani, who personally visited the crater and defied the Goddess Pele, a bold move fortunately followed by the stoppage of the lava flow.

18th April. This Volcano Hotel belongs to the enterprising Wilder Steamship Co. whose boat brought us here. For a spot so remote it seemed singularly civilized, with its large billiard room lounge in which a fire burnt cheerfully in the evenings. The Chinese cook too did his work very well, his bread, which we found to have been made with milk instead of water, being quite exceptionally good. After another comfortable night, in rooms both of which faced the volcano, we rose early in order to catch the coach at 6 a.m. for our drive back to Mountain View Station. It was an exceptionally bright morning with a slight hoar frost, for we were fortunate enough to escape any of the rain, which is so heavy here that according to official statistics the fall last month reached and registered the almost incredible amount of 7 feet. The drive struck us by its rare beauty quite as much as it did yesterday, and we particularly admired one species of tree, many specimens of which were growing 10 to 15 feet high by the roadside and having huge clusters several inches long of trumpet-shaped white flowers. This is the *Datura brugmansia*, which has for its local name Bellflower, and is said to smell most deliciously at night.

We caught our train all right at Mountain View, reached Hilo, got on board the Kinau once more, and sailed for Honolulu at 11 a.m. Amongst our fellow passengers were five thoroughbreds for the coming Honolulu Races. They were bred in California. ■



Friendly North Kohala

Art Galleries, Fine Dining, Cafes, Quaint Shops, and even a local Ice Cream Factory

Following highway 270 north visitors will encounter a landscape filled with historical landmarks that include the original statue of King Kamehameha, Kalahikiola Church, and Mo'okini Heiau which is regarded as the oldest pre-Western contact temple of worship. In the year 1758 King Kamehameha was believed to be born at Mo'okini.

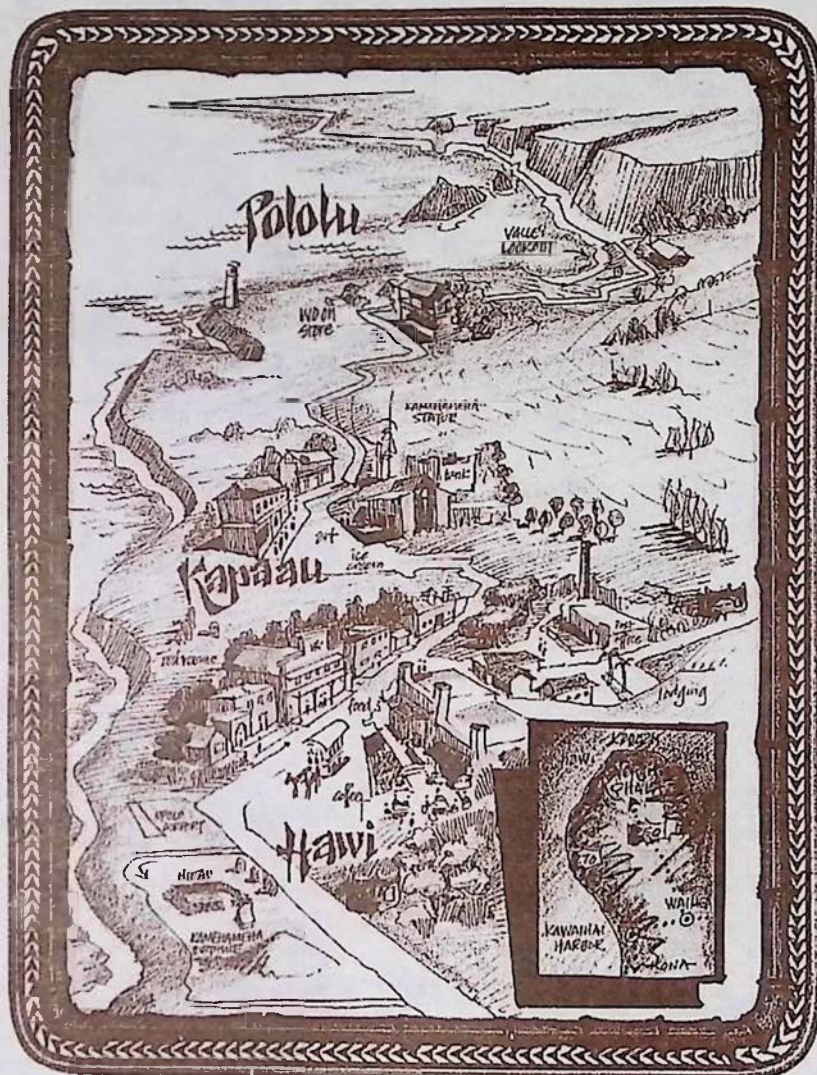


photo by Don Rich

Also to be found in the North Kohala region are the remnants of a once thriving sugar plantation industry of the 1880's which is still visible in the many old storefronts of Hawi & Kapaau towns. These towns are now preserved by a new generation of Hawaii business which have their own distinct local offerings. In Hawi Town, a fun romantic & wild boutique called **As Hawi Turns** awaits those visitors seeking

new clothing for the Hawaiian life-style and is not for the weak at the knees. The shop also carries handmade crafts by Big Island artists.

Next to As Hawi Turns is **Kohala Pacific Realty**, where visitors are welcome to stop in for free maps of the North Kohala region. On the other side of the street is the **Bamboo Restaurant and Gallery**. Inside what was once the grand old Takata Store,



Map by Jim Channon

built during the booming days of sugar cane, Bamboo combines Pacific Rim dishes with flavors from as far off as Thailand to create an innovative style of cuisine. Farm fresh herbs and local fish contributes a local flare to the food. The **Kohala Koa**

continued on page 8



**KOHALA
COFFEE
MILL**

889-5577

WELCOME to the newest addition to
Big Island Coffee Houses

KOHALA COFFEE MILL

Located in the restored 1932 Toyama
Building in downtown Hawi

*Enjoy espresso, cappuccino and a
full line of coffee drinks (all made with 100%
Kona coffee).*

*Relax, share wisdom, 'talk story'
and feel the pace of old Hawaii in a shop
that is decorated with scenes from early Ha-
waii coffee plantation days.*

*Also featured are fine pastries,
fresh donuts, coffee accessories and gifts.*

Open 7 Days A Week

whether you choose...

HAND-TOSSED PIZZAS, FINE PASTAS
OR
SCRUMPTIOUS DESSERTS
you will always get...

AN ADVENTURE IN TASTE

CAFE
Pesto
KOHALA COAST

OPEN FOR LUNCH & DINNER
Kawaihae Center, On the Kohala Coast, 882-1071

continued from page 23



Gallery, inside Bamboo, features Pacific Art and fine crafted wood furniture.

Just up the road a piece, smack dab in the middle of Kapaau Town is Hawaii's own local ice cream factory, **Tropical Dreams**. The owners, Lou and Deby Bleier, feature their fresh fruit sorbets and homemade ice creams and their original macadamia nut and honey butters in a parlor that fills one storefront in old Kapaau town. **FREE TASTES!!!** Across the street from the ice cream factory and also across from the King

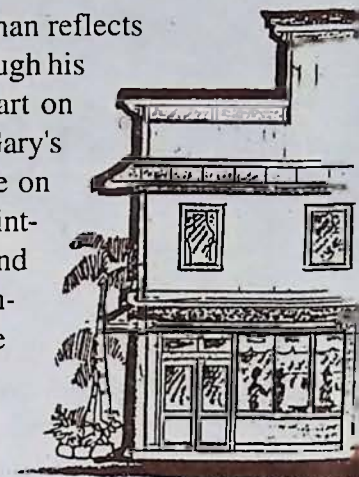
Kamehameha statue artist Gary Ackerman reflects

on the landscape around him through his impressionistic style of painted art on display in **Ackerman Galleries**. Gary's combination of a free liquid style on canvas and varied techniques of painting allows him to successfully blend the colors of the natural environment. Both galleries also feature the works of other local artists.

If the drive up the Kohala coast and gallery hopping has got your appetite going at this point, maybe it's time to visit **Don's Deli** across from the King Kamehameha statue. Let Don prepare a sandwich from his large selection of cold cuts and cheeses or try one of his homemade vegetarian quiches or pastas. Don's Deli is a great place to relax before heading north to Pololu Valley.

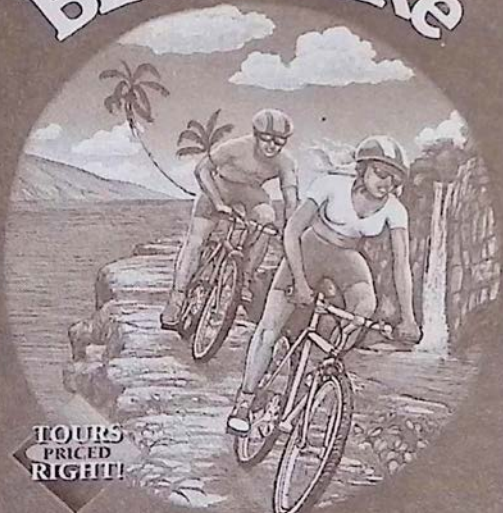
The latest addition to downtown Hawi is the **Kohala Coffee Mill**. Owned and operated by Jon and Dixie Adams the historic Toyama building circa 1932 is now the home to a new coffee shop which will serve 100% Kona coffee at its espresso bar.

When you're done in town Hwy. 270 will lead you through North Kohala's fertile pasture lands, dense forests, and ultimately to Pololu Valley, which offers one of the best scenic view lookouts on the island. Along your way to Pololu



CHRIS' ADVENTURES

Bike or Hike




TOURS PRICED RIGHT!

See "the wilder side of paradise"
Bike or Hike down a volcano through scenic terrain and exotic tropics....
or maybe explore Secret Trails....
How about a magnificent Waterfall?...
or Experience "Hidden Hawaii" along the coast.
All these adventures...and much more!


Maui • Kauai • Hawaii • Molokai • Lanai

Big Island Call - 326-4600

Bike or hike at your own pace!



Fun, Informative Tour-Hosts



bamboo

Restaurant & Gallery

Lunch Tues. - Sat. 11:30 - 2:30pm
Dinner Tues. - Sat. 5:30 - 9pm
Pupus served all day
Sunday Brunch 9 - 2pm
(808) 889-5555

Fresh Island Cuisine
"In Old Hawaii"
in Hawi Town



和安

Wo On Gallery

featuring:
wood, watercolors,
wearable art,
and much more

Devoted to the artists of North Kohala
and showing work by: Sandra Gray, Jim Parker, Lesley Patton and Patrick Rankin

7 mile past the 25 mile marker on 270 North
(808) 889-5002

Tropical Dreams™

Homemade Ice Cream
Sorbets & Frozen Yogurt
Used by Top Chefs of the Islands

Windows Cafe
"Every seat has a view"
Come have lunch,
but leave room for dessert
889-0505

OPEN DAILY:
Mon.-Sat. 11-5 • Sun. 1-5

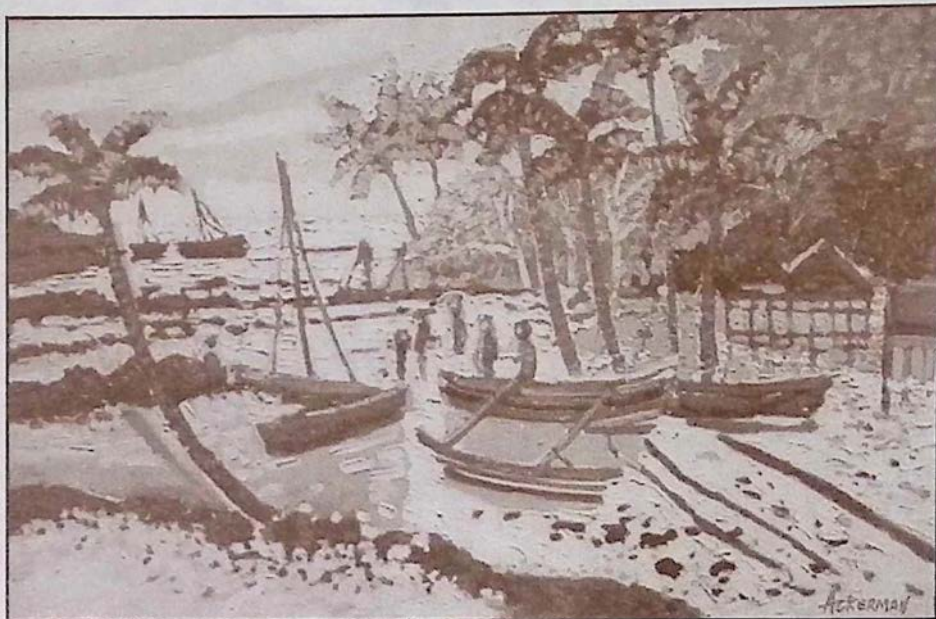


Art & Photos: Page 23: The King Kamehameha statue in downtown Kapaau **Page 24:** Kohala Coast Petroglyphs and Pu'ukohala Heiau **Below:** Impressionistic painting, "HAWAIIAN FISHING VILLAGE," by North Kohala artist Gary Ackerman. **Left:** The Old Takata Store, now the Bamboo Restaurant. Keeping North Kohala and its buildings alive are the goals of Kohala Pacific Realty.

their is **Wo On Gallery**, three miles past Kapaau town, which now occupies the old Wo On General Store, built by Chinese immigrants around 1920. The gallery hosts the works of only North Kohala artists, its youngest contributor being only 6 years old. Wearable art, sculptures, pottery, woodwork and watercolor paintings by Patrick Rankin can all be found at this local gallery.

If your interests lie in seeing all their is in this region **Chris' Adventures** offers a "bike at your own pace" bike tours and hiking trips through this region of the Big Island. The bike and hike adventures are suited for all levels of enthusiasts. Included with these tours are breakfast and lunch consisting of fresh fruit, coffee, tea, and baked goods in the morning and a **Don's Deli** sandwich for the afternoon's concluding picnic.

While driving along the coastline of North Kohala remember that if the skies are clear, you may be able to catch a view of the island of Maui looming from the other side of the Alenuihaha channel, which separates Maui from the Big Island. Between the months of December and April visitors are almost guaranteed a humpback whale sighting off the coast of North Kohala. This region of the Big Island is a particularly favorite spot for our migrating friends from the north. Perhaps the favorite way to cap off the afternoon in North Kohala is to stop in Kaiwihae and enjoy a Pacific Rim Italian meal at the original **Cafe Pesto** located in the Kaiwihae Shopping Center near the harbor. The reasonably priced meals are complimented by wonderful pastas, fresh salads and hand-tossed pizzas as well as an original selection of delicious desserts. If you are planning on visiting the town of Hilo



Cafe Pesto can also be found in the old S. Hata Building near the bay front.

Come and enjoy this peaceful region of Hawaii. You will see and taste the wonders it has in store for you.

Ackerman
GALLERIES

ORIGINAL WORKS BY
ISLAND ARTISTS
ORIENTAL ANTIQUES
PRIMITIVE ARTIFACTS AND GIFTS

Open daily 9:30 to 5:30 p.m.
Both locations in Kapaau town Hwy. 270 North

(808) 889-5971

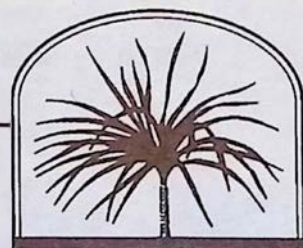
DON'S Family DELI

New...
Fresh Fruit
Smoothies &
Carrot Juice

10% OFF
all lunch orders over \$10
see our coupon

sandwiches, lasagnes, quiches,
pastas and chicken enchiladas
CAPPUCINO & ICE CREAM

CAFE LOCATED ACROSS FROM KING'S STATUE
MON-FRI 8-6 SAT/SUN 8-5
(808) 889-5822



**KOHALA
PACIFIC
REALTY**

Specializing in
North Kohala
LAND & HOMES

Phone (808) 889-5181
Fax (808) 889-5161

Located in the restored Toyama Building
Downtown Hawi

P.O. Box 307 Kapaau, Hawaii 96755

HAWAII ISLAND

BY LAND, BY SEA

Atlantis Submarines: Your adventure begins at port, where you'll board a fun-sailing catamaran/boat. Lush island vistas and the picturesque coastline is the backdrop for your leisurely sail to the Atlantis dive site. Thrilling surfers, jet skiers and colorful parasailers provide great photo opportunities along the way. The Atlantis Submarine is a welcome sight! Climb aboard and you're set for a once-in-



SECOND WIND SAIL / SNORKEL CHARTERS

- Six Guest Maximum - No Crowds
- Guided Snorkel Tour, with Coral & Fish Identification
- Free Lunch & Juice
- Half Day Trips are Over Four Hours- Time to Relax, "Hawaiian Style"

REAL SAILING ON FAST, SAFE
STILETTO 27-FT. CATAMARAN

(808) 334-0577

Call for info., reservations

EXPERIENCE THE BIG ISLAND NATURALLY



Photo by Jack Jeffrey

Explore remote native forest areas on guided nature adventures.

- Fully catered and equipped
- Natural, cultural, geological history
- Hakalau National Wildlife Refuge
Hualalai Volcano
- Easy to moderate walks
- Day trips with airport pickup
- Member of the Ecotourism Society

329-1993

H A W A I I
FOREST & TRAIL

P.O. Box 2975 Kailua-Kona, HI 96745

a-lifetime journey through Hawaii's natural undersea world. Come face-to-face with "puhi," Hawaii's feared moray eels. See why the "humuhumunukunukuapua'a" is nicknamed the "Picasso fish." Witness the docile behavior of manta rays and the circling nature of the awesome shark! Discover why your teeth glow and orange looks pink at depths of 100 feet. It's a wondrous experience of sights and sounds aboard a real submarine! **329-6626 for booking.**



West Wind Sailing Charters lays anchor in historic Kealahou Bay.

Hawaii Forest & Trail: Hawaii Forest & Trail takes you on excursions to remote wilderness locations around this diverse Big Island. On these nature adventures, which include all food and gear, you'll learn about Hawaii's unusual and indigenous species of plants and animal life. You'll find out how Hawaii has become the evolutionary showcase of the world. And you'll come to appreciate the geology, climate, and delicate ecosystems of this special place. Children are welcome, lunch and beverages are provided, space limited to eight guests and customized excursions are available. For all ages. All you bring are comfortable walking shoes and an adventurous spirit - we'll do the rest. Hawaii Forest and Trail is a member of the Eco-Tourism Society and dedicated to low-impact environmental etiquette and nature education. **329-1993 for booking.**

Kona Kai-Yaks: Offering guided Kayak adventures these customized excursions accommodate personal preferences, physical capabilities, time frame and weather conditions. Each participant receives personalized instruction on paddling techniques, water safety and historical significance of the area, no one is left behind or rushed thru points of interest. All trips are conducted by knowledgeable, experienced guides. Our trip prices range from \$45 for a two hour beginner paddle to \$65 for a half day or \$95 for a full day outing. Over-

West Wind Sailing Charters

Whale Watch
and Snorkel
on our Family
Overnighters

4-6 passengers
enjoy sailing on
our very spacious
41' ketch



(808) 334-3455

night and extended voyages or off island Kai-expeditions to Molokai, Kauai or New Zealand are also available. Our shop is located in the Honokohau Harbor and carries new and used kayaks, gear and equipment, and offers rentals for as low as \$10 a day. **326-2922 for booking.**

Lanakila Ventures: Let us show you the romance of sail. Lanakila carries 12 sails, from a gigantic spinnaker and blooper for running before the warm tropical breezes of Kona, to staysail yankees for going to windward. At our reef destination enjoy gourmet food and spectacular snorkeling with our friendly and experienced crew. We offer morning, afternoon, whale watching, and sunset cruise. Included in the morning is a breakfast of snacks and fresh fruit, lunch offers a gourmet menu and a full service bar is available. Private party charters, film, underwater cameras, fishing gear and snorkeling gear is all available. **Call 987-3999 for booking.**

Nautilus II: Join us for Kona's newest underwater adventure. We will take you to the undersea coral gardens of the Kona Coast where thousands of tropical fish, dolphins and sea turtles reside. Inside Nautilus II large personal viewing windows, fish feeding by our diver and a live narration by our expert crew all combine to make this family fun adventure the "Experience of a lifetime." We are located across from the pier in Kailua Bay. **Call 326-2003 for booking.**

Second Wind Sail/Snorkel Charters: Geared for sailing enthusiasts and snorkelors, life long sailor Captain Lary Ratliff invites small parties of six or less to discover the Kona Coast. His state of the art, totally unsinkable, 27 foot Stilleto catamaran is designed for speed with the capability to move in the lightest Kona breeze. Two cabins enclose a bridge deck with cushioned seats for a dry, comfortable ride. There is a trampoline forward for sunning and a portapotti on board. Unhurried, half day sails, from 10am to 2pm., visit Kona's snorkeling reefs. Narration, snorkel gear, instruction, lunch, and juice are included. Custom fullday and sunset cruises also available. **Call 334-0577 for booking.**

West Wind Sailing Charters: Offering custom sailing excursions to Kona's remote coastal destinations West Wind's captain Eric Witt accomodates 4-6 passengers for sailing adventures. The spacious 41 foot ketch is perfect for family overnigheters, whale watching and snorkeling. Gourmet foods are always available for meal times. Leave your worries behind and come aboard and sail away into a true island paradise aboard the West Wind. **Call 334-3455 for booking.**



SAILING • SNORKELING Sunsets & Whale Watching

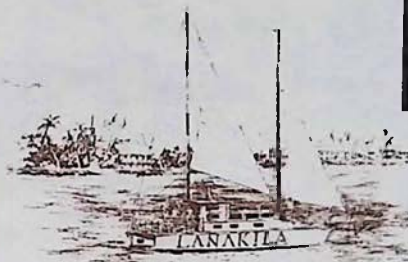
VENTURES, INC. 987-3999

Kona's uncrowded 60' trimaran sailing yacht

Experience the blue water adventures of the Kona Coast aboard the Lanakila.

"We offer an alternative to the crowded tourist boats."

**\$10 OFF per adult couple on
Snorkel - Whale Watch
(direct booking)**



NAUTILUS II SEMI SUBMERSIBLE

HAWAII'S SUBMARINE EXPERIENCE




Enjoy Both Topside and Underwater Viewing in our Air-Conditioned, 58-Foot, 34-Passenger Coast Guard Approved Vessel. No Age Limit, Day and Night Cruises, Special Group Charters Available

**\$5 OFF
UNDERWATER RIDE
WITH THIS COUPON**

For reservations call or stop in at our shop. We are located across from the pier in Kailua-Kona

326-2003

GENTRY'S KONA MARINA,
HONOKOHAU HARBOR,
KAILUA-KONA.

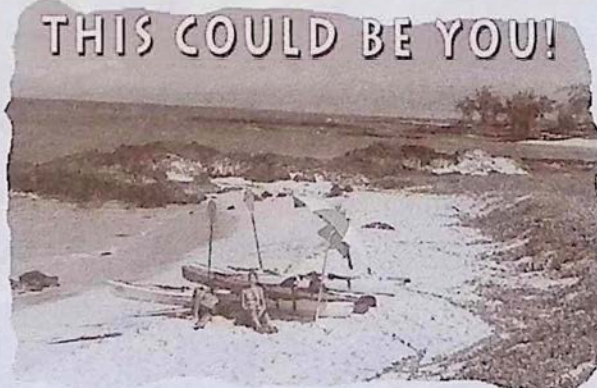


KONA KAI-YAK



THE BIG ISLAND'S ONLY FULL SERVICE KAYAK SHOP SELLING NEW AND USED BOATS AND ALL THE ACCESSORIES TO MAKE YOUR OCEAN EXPERIENCE FUN AND SAFE.

YOU CAN RENT A KAYAK FOR AS LITTLE AS \$10/DAY.

THIS COULD BE YOU!



CALL US FOR **GUIDED TOUR INFO.**

(808) 326-2922  

MENTION COFFEE TIMES

Hawaii's ONLY Submarine Adventure

Come descend into the ocean world with us as we explore 25 acres of Kona's natural coral reef and hundreds of tropical fish. Life under the Hawaiian ocean will fascinate you! Hourly tours departing from King Kamehameha's Kona Beach Hotel on Alii Drive in Kailua-Kona, Sunday through Thursday.

Receive \$10 OFF SUBMARINE TOUR

Tour must be booked direct with this coupon

For reservations please call

(808) 329-6626

King Kamehameha's Kona Beach Hotel on Alii Drive in Kailua-Kona



32nd Annual Merrie Monarch Festival

"The World's Showcase of Hula"

April 16, Sunday, 11am to 4pm,

Coconut Island (Mokuoloa) Hoolaulea, Master of Ceremony: Keoni Fujitani

11am	Halau Hula O Kahikilaulani
12pm	Ke Onaona
1pm	Special K (Kaa'ih'i Ohana from Kona)
2pm	Pauahi
3pm	Janoe Kalawa (Winner Aloha Week Falsetto)
4pm	Himani Pili'aloa

April 17, Monday

12pm	Halau Hula O Kahikilaulani	Hawaii Naniloa Hotel
1pm	Na Pua Me Kealoha of California	Hilo Hawaiian Hotel

April 18, Monday

12pm	Hula Halau O Lilinoe of California	Hawaii Naniloa Hotel
1pm	Halau Keali'i O Nalani of California	Hilo Hawaiian Hotel

April 19, Wednesday

12pm	Halau Keli'i O Nalani of California	Hawaii Naniloa Hotel
1pm	Lorilei's Hula Studio	Hilo Hawaiian Hotel

Main Festivities at Edith Kanaka'ole Tennis Stadium

6:30pm	Royal Court Enters
6:45pm	National Anthem-Hawaii Pono'i
6:55pm	Pule
7:00pm	The Merrie Monarch Glee Club
8:00pm	Kawahineali'ino'ho'ikeanuenue/Keali'i O Kamalu
9:00pm	Johnny Lum Ho's - Halau O Ka Ua Kani Lehua Presents: Tau'ati
	Under the direction of Matauranui & Viriamu

April 20, Thursday

12pm	Kuulei Hashimoto of Japan	Hilo Hawaiian Hotel
1pm	Halau Hula O Kahikilaulani	Hilo Hawaiian Hotel

Main Festivities at Edith Kanaka'ole Tennis Stadium

6:00pm	Royal Court Enters
6:15pm	National Anthem-Hawaii Pono'i
6:20pm	Pule
6:25pm	Introduction of Judges
6:30pm	Miss Aloha Hula Competition, Presentation of Awards

April 21, Friday

11am	Halau Hula O Kahikilaulani	Pier 1, Kuhio Wharf
12pm	Hula Halau O Hilo Hanakahi	Hawaii Naniloa Hotel
1pm	Kuulei Hashimoto of Japan	Hilo Hawaiian Hotel

Main Festivities at Edith Kanaka'ole Tennis Stadium

6:00pm	Royal Court Enters
6:15pm	National Anthem-Hawaii Pono'i
6:20pm	Pule
6:30pm	Hula Kahiko Group Hula, Kane & Wahine

April 22, Saturday

8am to 4pm	Cultural Fair, Moku 'O Keawe	Mooheau Park, Downtown Hilo
10:30am	Royal Parade	Downtown Hilo

Main Festivities at Edith Kanaka'ole Tennis Stadium

5:30pm	Royal Court Enters
5:45pm	National Anthem-Hawaii Pono'i
5:55pm	Pule
6:00pm	Hula 'Auana Group Hula, Kane & Wahine, Presentation of Awards

April Hula Festivities at Waimea's Cook's Discoveries



Above: "Keoni Kani" by Doug Tolentino

Facing Page: "Kukuna O Kala" by Doug Tolentino



Performance of hula is incomplete without the lei. Whether worn by the dancer, ho'opa'a (chanter), kumu hula (dance master) or simply used to decorate the drums and dance platforms, the lei is present at each hula performance. Native flowers and greenery that are kino lau (another form) of the patron of the dance are preferred for the performance of the hula kahiko (ancient dance), while lei of native as well as introduced plant materials adorn dancers in their performance of the hula auana (contemporary dance).

Lei-making masters and students will gather at Cook's Discoveries in Waimea's historic Spencer House throughout this year's Merrie Monarch Festival (April 16-22) to share the arts of ancient hula so revered by King David Kalakaua, the Merrie Monarch.

A fitting place for lei and crafts demonstrations and talk story sessions, the 150-year-old Spencer House hosted Kalakaua during his reign. Featured masters during this year's Merrie Monarch salute include native Hawaiian lei-maker and Smithsonian "living treasure," Marie McDonald, and respected authorities in native crafts Kana's Keawe and Ka'imiloa Chrisman. Keawe will demonstrate pahu (drum) carving from the trunk of an ulu (breadfruit tree). Kaimiloa will demonstrate seldom-seen gourd decoration.

Throughout Merrie Monarch week, numerous other respected lei makers, many from the upcountry region of Waimea, will demonstrate various styles of lei making, from feathers and ti leaves, to akulikuli, ekoa, kikania and the new hybrid bat-faced kika. For a full schedule, call Cook's Discoveries, tel. (808) 885-3633.

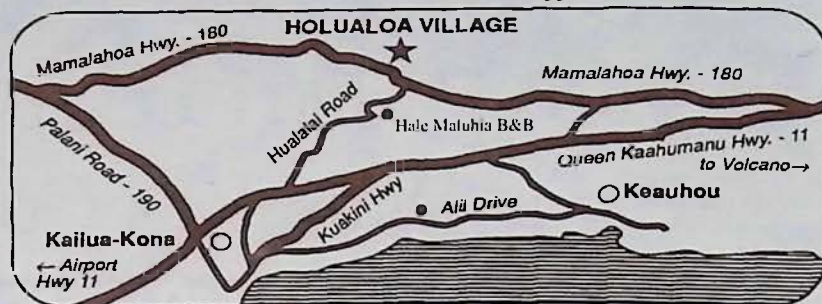
"The lei is a fragile art form. Giving a lei represents love, affection, respect and honor. Leis exemplify arms entwined about another person's neck -- mother and child, lover and beloved, friend and friend. And the memory lasts forever." Marie McDonald, master lei-maker

Holualoa Aloha & Art

Days pass slowly in the artist's retreat town of Holualoa, almost like the gentle mountain breezes which weave their way through the groves of coffee trees lining the slopes of Mt. Hualalai. Steeped in natural beauty and tradition, this little mountainside coffee town blends a touch of today's art with a passion for the simpler life of the past. The village's many private galleries showcase the works of many local artists in a wide array of mediums.

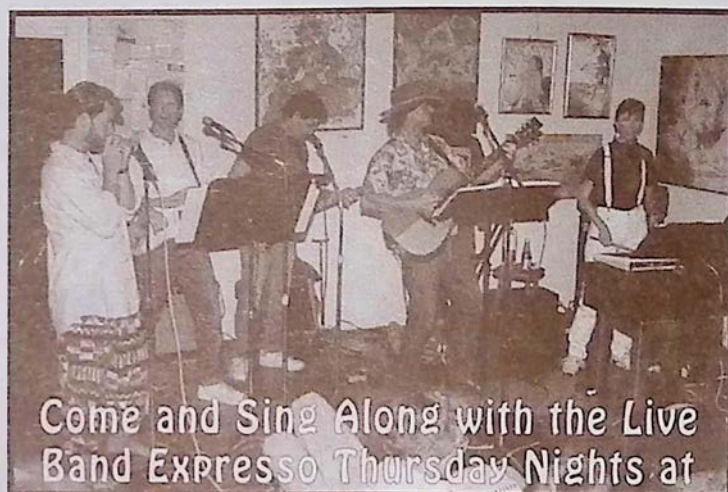
When you are done visiting the galleries, the friendly local espresso bar, **Holuakoa Cafe**, will undoubtedly snatch an hour or two from your day and maybe more if you decide to indulge in the homemade cake and pastry selection. Every Thursday night the sound of acoustic guitars may be heard in the night air strumming over a chorus of 'gone happy' coffee drinkers packing the cafe for Holualoa's only night time entertainment. (Give cafe owner, Meggi Worbach, a call at 322-CAFE for an up to date scoop on her local entertainment schedule).

If you are looking for a place to spend the night, **Hale' Maluhia** (House of Peace) Bed and Breakfast is



located below the village on Hualalai road. This rambling home offers guests a sense of seclusion and a touch of paradise and is outfitted with several lanais, an outdoor spa, kitchen and even office facilities.

Make it a point to wander up for a visit to Holualoa you will love this adorable country town.



Come and Sing Along with the Live Band Espresso Thursday Nights at Holuakoa Cafe from 7:00 to 10 pm



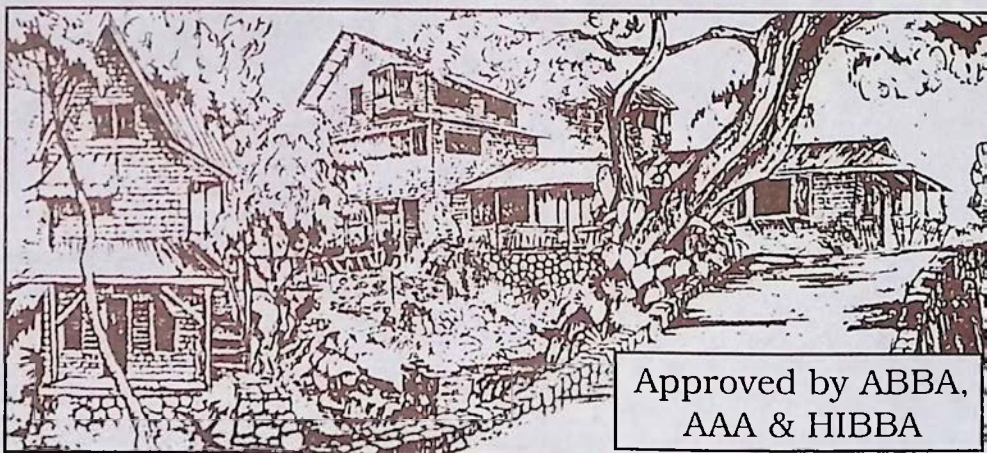
Hale' Maluhia Bed & Breakfast

GRACIOUS KONA PLANTATION LIVING UP-COUNTRY COFFEE LAND

- * Truly, a friendly touch of Aloha, in Old Hawaii
- * Great rooms, Comfortable Beds, Private Baths
- * Custom Stone/Tile Spa, Waterfalls, Koi Ponds
- * Double Rm. with full buffet breakfast from \$50
- * 3.5 miles to Kailua-Kona, Easy airport access

For reservations or a FREE brochure write or call:

76-770 Hualalai Rd. Kailua-Kona, HI 96740
Toll Free 800-559-6627, (808) 329-5773.
Fax (808) 326-5487



Approved by ABBA,
AAA & HIBBA

Holuakoa Cafe

ESPRESSO BAR

HOURS: Mon-Sat 6:30am - 5pm Thurs. nites
7-10pm Closed Sunday **322-CAFE**



For that delicious coffee drink in an upcountry atmosphere, stop on by Holualoa's most Happenin' Scene...

Love, *Meggi*

PS. Don't forget to come in and hear our new live music on Thursday nights!

Coffee Times 100% PURE KONA™ COFFEE

Hand Picked, Sun Dried and Truly Graded

Did you know that out of the 20 million pounds of Kona Coffee bought and consumed every year under the name Kona only 2 million pounds of that coffee is actually grown here in Kona? And the frightening fact of the matter is...that most Kona coffee drinkers around the world have no idea that what they're drinking is a coffee containing 90% of something other than Kona coffee. It's time for this deceptive labeling and misuse of the Kona name to end. In an attempt to preserve the coffee growing heritage here in Kona and the gourmet reputation of our local coffee and to combat this widespread misrepresentation of the Kona name to sell counterfeit coffee we here at Coffee Times magazine unconditionally guarantee that the coffee you receive from us is farmer direct, contains only 100% Kona coffee and meets the State of Hawaii's highest grading standards. Enjoy the pure taste of the world's finest coffee and help preserve our local farm lands by buying only 100% Kona.



Our Mail Order Coffee Makes The Perfect Gift ~ Hotel Delivery Available ~ We Only Roast To Order!

ORDERING INFORMATION

Type	Roast	Lbs.	Total
_____	_____	_____	\$ _____
_____	_____	_____	\$ _____
_____	_____	_____	\$ _____
_____	_____	_____	\$ _____
_____	_____	_____	\$ _____
_____	_____	_____	\$ _____

Delivery Charges \$ _____

In U.S. please add \$3.50 for 1st pound & \$1.50 for each additional pound (Call for international fees)

Grand Total \$ _____

Please mail with check or money order to:
Coffee Times, P.O. Box 1092, Captain Cook, HI 96704

by Credit Card
circle one
(MC) (VISA) (AM EX)#: _____

Exp. Date: ____/____/____ Name: _____

Signature: _____

Ship To: _____

Please allow up to 1 week for delivery

PEABERRY

The finest Kona coffee bean available (The result of single bean growth in the usual two bean coffee cherry)

17.95/lb. 84.95/5 lbs. 159.95/10 lbs.

EXTRA FANCY

Exquisite taste, high elevation, large single bean coffee

16.95/lb. 79.95/5 lbs. 149.95/10 lbs.

FANCY

Excellent quality, average sized bean, high cupping standard

14.95/lb. 69.95/5 lbs. 129.95/10 lbs.

PRIME

Choice bean of most specialty Kona coffee consumers.

12.95/lb. 59.95/5 lbs. 109.95/10 lbs.

FLAVORED KONA (Prime) COFFEE

Vanilla, Macadamia Nut & Chocolate Macadamia Nut
15.95/lb.

(please specify medium, dark or espresso roast)

Other Goods Offered:

T Shirts \$15.00 (add \$1.50 each shirt for shipping)
*(Coffee Times Logo on front, counterfeiting cartoon on back)
please specify Large or Xtra Large shirt size)*

Kona Coffee Crunch Candy \$3.00 2.5oz pkgs.
(1-4 pkgs. no shipping chg., 5 or more add 1.50 for each five)
*(These Homemade Hawaiian Candies contain Hawaiian
Macadamia Nuts, English Toffee, and 100% Kona™ Coffee
Beans Smothered in Rich Bittersweet Chocolate.)*

WE SHIP WORLD WIDE

1-800-750-KONA

In Hawaii Call: (808) 326-7637

P.O. Box 1092, Captain Cook, HI 96704



We welcome the
American Express Card

Don't Leave Home Without It.

SOUTH KONA

Kona Coffee Farms, Kealahakua Bay, Captain Cook Monument, Pu'uhonua O Honaunau, The Painted Church

There is, perhaps, no other region on the Big Island shrouded in more history than the district of South Kona. Whether it be the origins of Kona coffee, the ancient Hawaiian village setting of *Pu'uhonua O Honaunau* (Place of Refuge) National Park, or the Painted Church nestled along the hillside overlooking Kealahakua Bay, the spot where the famous English explorer Captain Cook met his fate in 1779, South Kona will keep the historically minded visitor busy weaving their way through its network of mountain roads.

High on the slopes and off Hwy. 160 is The Painted Church, where sometime between 1899 and 1904, Father John Velge, a Catholic missionary from Belgium painted images on the interior walls of the church depicting the biblical scenes of heaven and hell. Near The Painted Church is the rural setting of **Wakefield Gardens Restaurant**. Owner Arlene Wakefield serves lunch daily at her botan-



Tiki Carvings at Pu'uhonua O Honaunau (Place of Refuge) National Park in Honaunau. Photo by Michael Stewart

anical garden setting in Honaunau. Look for her famous Papaya Boat with tuna salad, it has become a favorite dish among the local population and continues to thrill visiting diners. The restaurant is open for lunch only and includes a free tour of the botanical gardens surrounding the estate.

If your time in South Kona allows for it leave room in your stay for the "Narcissus" at therapist Sheila Pattison's **Querencia Spa**. Her massage treatment includes a jacuzzi, herbal facial, full body massage, beverages, light pupus and a catered gourmet dinner in the Spa's Tea Room. Custom catering is available to meet all your needs.

From the wonders of The Painted Church, Middle Keei road empties out onto Napoopoo Road before passing **Bay View Farms and Mill**, family owned and operated by New Hampshire native Andy Roy and his wife Rosalyn. Over the distant hum of pulping



Featuring:

"The Narcissus"

A Very Special Private Affair

A romantic candlelight massage for couples followed by a catered supper and pupus.

Insurance & Work Comp.
Accepted

mat. 2225 mat. 3053

Massage, Body Wraps &
Pacs, Injury Therapy,
Jacuzzi & Hydrotherapy

*Located near the Place of Refuge
in Honaunau*

(808) 328-2569



Querencia Spa Tea Room



An artists cooperative located in the headmaster's quarters of an old Japanese schoolhouse in Honaunau, this site offers a glance into older and quieter Hawaii. A wonderful place to view fine, affordable local art.

Find us at SKEA on Hwy. 11 between mile markers 106-105 on the makai (ocean) side of the road.

Cottage Gallery

at SKEA

Paintings

Sculpture

Pottery

Stained Glass

Jewelry

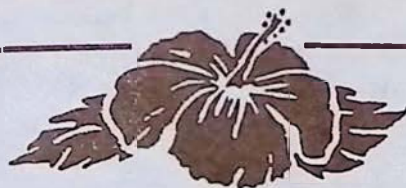
Quilting

Wearable Art

Candles & Woodwork

328-9392

OPEN Tues-Sat 9am-5pm



**FREE BOTANICAL
GARDEN TOUR**

Buy one get one Free Papaya Boat filled
w/Tuna Salad & Herb Dressing!!!
with this coupon

Homemade sandwiches, soups, full vegetarian
fare, Kona Coffee, fresh baked pies
OPEN 11 am to 3 pm (7 days a week)

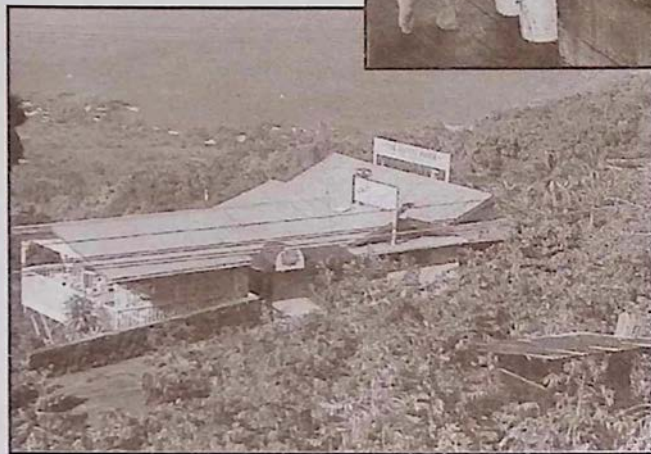
(808) 328-9930 P.O. Box 18, Honaunau, HI 96726

A TRULY RURAL DINING EXPERIENCE



Located in the heart of coffee country, Hwy. 11 south to
Hwy. 160 (Painted Church & Place of Refuge)

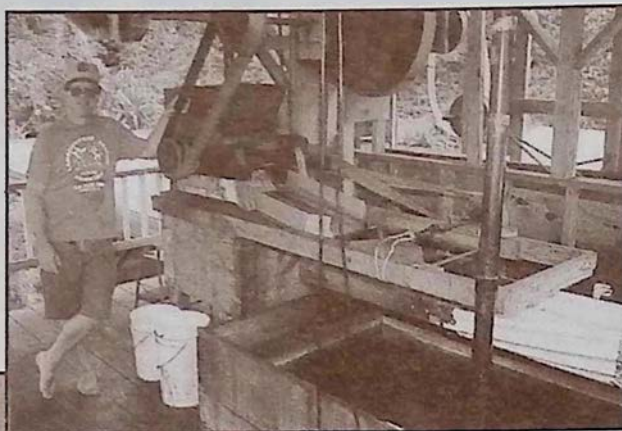
and grading machines the sweet and damp smell of freshly pulped coffee cherry fills the air during the fall and winter coffee season. An extensive system of outlying drying decks and groves of coffee trees cover the landscape in front of the now visible cliffs of Kealakekua Bay, which in the hazy distance plummet their way seaward. Bay View Farms has recently added a rural coffee and gift shop to their operation, where guests will have the opportunity to 'cup up' some 100% pure Kona coffee. Farm and mill tours available at Bay View are also available at the upslope Old Hawaiian Coffee farm and mill that dates back to the late 1800's and also at Langenstein Farm, where coffee is grown, picked, milled and roasted exclusively on the Estate. For personalized group tours at any of these farms feel free to call ahead for an appointment. Also located in South Kona is the **Kahauloa Coffee Co.** high above Kealakekua Bay on Hwy. 11. The Kona coffee outlet also hosts a deli and espresso bar including a covered porch area perfect for lunch. From the porch visitors have the chance to overlook some of Kona's most beautiful coffee farms.



Top: John Langenstein of Langenstein Farm, where visitors are welcome to a free tour of a working coffee farm. See ad on back page. Bottom: Kahauloa Coffee Co. offers guests, sweeping views of Kealakekua Bay and coffee farms, a gourmet deli and espresso bar and gift shop.

At the bottom of Napoopoo Road is Hikiau Heiau at Kealakekua Bay, and a white stone monument across the bay that marks the spot where Captain Cook was killed in 1779. The story behind Cook's death was that it was the result of a failed attempt by Cook and his soldiers to take the high chief Kalaniopuu hostage in return for a cutter that was stolen the night before. Cook, who had come south to the Hawaiian Islands seeking shelter for the winter months, was in search of a northwest passage to England.

A lower coastal road connects Kealakekua Bay to Pu'uhonua O Honaunau (Place of Refuge) National Park. In the early years of Hawaiian civilization it was the Place of Refuge



that people who broke *kapu* (sacred laws) would attempt to flee. If the *kapu* breaker could reach this sanctuary his life would be spared. Some of these *kapu* that governed the common people included not being allowed to walk in the footsteps of the chiefs or to touch their pos-

sessions. Other rules forbade commoners from eating foods reserved for offering to the gods, and women were not allowed to eat with the men. The gathering of wood, seasons for fishing and the taking of animals as well as the *hula* were also controlled under the *kapu* system. Other features at the park are *lokos* (ancient fish ponds), *hales* (thatched roof structures that served as homes), *heiaus* and ancient rock walls. Visitors are usually provided with live demonstrations of ancient Hawaiian crafts such as the building of canoes and tikis at the park.

Back out on Hwy. 11 the **Cottage Gallery** hosts the works of area artists with many affordable pieces being offered as the perfect mementos of your stay

in South Kona.

Kona Historical Society Museum

The Kona Historical Society, a non-profit organization, was founded in 1976 to collect, preserve and disseminate information about the history of the Kona districts on the island of Hawaii. It maintains a growing reference library and archive containing photographs, manuscripts, maps and oral histories as well as a small collection of artifacts.

Historical Photo Exhibits on display every month

Museum Hours:

9:00 a.m. - 3:00 p.m. Weekdays

Closed All Holidays

ADMISSION IS \$1.00

(members & children under 12 free)



Located on Highway 11, one-half mile south of rural Kealakekua.
P.O. Box 398 Captain Cook, HI 96704 TELEPHONE (808) 323-3222

KAHAULOA COFFEE CO.

PLANTATION

DIRECT OUTLET

DELI & ESPRESSO BAR

Tasting Room

Our Plantation is located next to the coffee trees which bear our famous beans. We do all our own roasting and packaging here at the Kahauloa Coffee Company's direct outlet. Let us serve you a Freshly brewed cup of coffee while overlooking this beautiful valley of coffee trees. Look for our coffee in stores and we also Mail Order.

We are located near mile marker 109 on Hwy. 11 in Captain Cook, South Kona. Call or Write for a Free Brochure.



(808) 328-9555

P.O. Box 510, Captain Cook, HI 96704

1-800-800-6267

Bed & Breakfasts of THE HAWAII

HAMAKUA & KOHALA REGIONS

1. **Kamuela's Mauna Kea View** Innkeepers: Richard & Deb Mitchell, P.O. Box 6375, Kamuela, HI 96743 Ph: (808) 885-8425

Popular private Suite and COTTAGE (each with Fireplace, Kitchette, Sun deck, Telephone and color TV) "Now with Jacuzzi" Bordering Parker ranchlands with panoramic views of 14,000 ft. Mauna Kea. Enjoy Hapuna and Island's best white sand beaches, historic Waipio & Pololu Valleys and world class resorts. A Kamuela tradition of hospitality since 1988!

2. **Luana Ola B&B Cottages** Innkeepers: Tim & Jeannie Mann, P.O. Box 430, Honokaa, HI 96727 Ph: (808) 775-7727, 1-800-357-7727

In the coastal village of Honokaa, charming, private, new cottages overlook sweeping ocean views. Kitchenette, full bath, large porch, laundry facilities, private phone, wheelchair accessible, breakfast of fresh fruit, muffins, coffee, teas and juice. Walk to Honokaa town, tennis & golf. Waipio Valley nearby. \$75/night.

3. **Suds' Acres** Innkeepers: Anita & Oliver Suds, P.O. Box 277, Paauilo, HI 96776 Ph: 808-776-1611, 1-800-735-3262

We are located on a macadamia farm at 1800' elevation on the slopes of Mauna Kea with a view of the Hamakua coast. Our 2 bedroom cottage with bath, lvg. rm. is 5 miles to Honokaa & 20 miles to Waimea. Additional rooms in main house, color TV in all units.

4. **Waimea Gardens Cottage** Innkeeper: Barbara Campbell, P.O. Box 563, Kamuela, HI 96743 Ph: (808) 885-4550, 1-800-262-9912

Charming streamside cottage, inspected and rated "Excellent" by the American B&B Assn., has 2 units on 1 1/2 acres in the foothills of the Kohala Mtns. French doors open to private patios; private baths; .2 mi. west of Waimea town; 8 mi. to best beaches. \$110 dbl.; Min. 3 Nts.

5. **Waipio Wayside B&B** Innkeeper: Jackie Horne, P.O. Box 840, Honokaa, HI 96727 Ph./Fax: (808) 775-0275, 1-800-833-8849

Experience the gracious hospitality of a 1938 sugar plantation home. We cater to those who wish to unwind in a comfortable atmosphere. Choose from 5 unique bedrooms, 2 with full bath, 1 with 1/2 bath. 1 night stay \$70-\$100, multiple nights \$60-\$90 plus tax.

HILO REGION

6. **Holmes Sweet Home B&B** Innkeepers: John & Charlotte Holmes, 107 Koula St., Hilo, HI 96720-1625 Ph. (808) 961-9089

Sweeping view of Hilo Bay. Cool, quiet, tropical setting 5 minutes from restaurants, shopping, ocean. 15 minutes from airport - 2 rooms with queen beds, private baths and entrances. Guest lanai and sitting room with microwave & fridge. Fresh Hawaiian fruit, Kona coffee, island juices, teas, homemade breads served. \$60-\$70 plus taxes. Please phone for availability.

KAU REGION

7. **Becky's B&B** Innkeepers: Becky & Chuck McLinn, P.O. Box 673, Naalehu, HI 96772 Ph./Fax: (808) 929-9690 or 1-800-235-1233

Rooms affordable \$38 up, with private baths & entrance, full breakfast cable TV. Black or Green sand beaches, swim with turtles, golfing. Or after a long day, just sit in our whirlpool spa & enjoy a lovely evening under the stars. Our town, gives you a feeling for old Hawaii.

8. **Bougainvillea B&B** P.O. Box 6045, Ocean View, HI 96737 Ph./Fax: (808) 929-7089 1-800-688-1763

Nights & Breakfasts to Remember. In historic "Kau" district between Kona & Hilo. Near green & black sand beaches, South Point & Ocean View. Rooms-pvt. bath, entrance & TV/VCR. Awesome view of the stars from the pool & spa. Hosts Martie & Don Nitsche share secrets of Hawaii.

9. **Wood Valley B&B** Innkeeper: Jessie Hillinger P.O. Box 37, Pahala, HI 96777 Fax 808-928-9400 Ph:(808) 928-8212, 1-800-854-6754

Vintage plantation home/farm- in misty uplands above rural sugar town. Near Green & Black sand beaches, ocean view. Unique outdoor bath and steam house, quiet healing environment, homegrown breakfast Hawaiian. Gay Friendly.

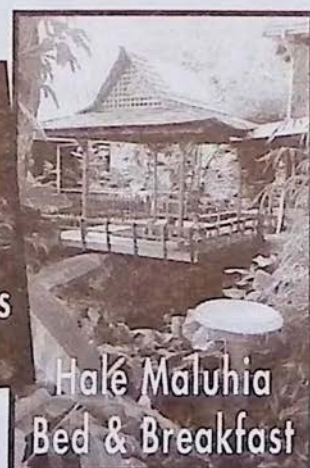
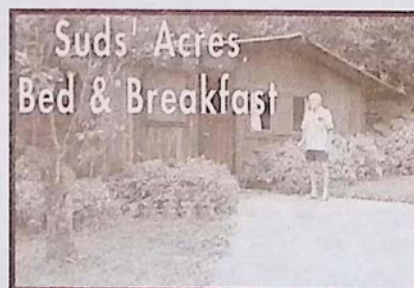
KONA REGION

10. **Lion's Gate Bed & Breakfast** P.O. Box 761, Honaunau, HI 96726 Ph./Fax: (808) 328-2335

Enjoy a country lifestyle on a working macadamia nut farm with all the conveniences of modern life. Secluded and completely private with panoramic vistas of Kealahou Bay & the Kona Coast. Tropical fruits, mac nuts, Kona Coffee & fresh baked breads and rolls for breakfast.

11. **Hale Maluhia B&B** Innkeepers: Ken & Anne Smith, 76-770 Hualalai Rd. Kailua-Kona, HI 96740 Ph: (808) 329-5773, US: 1-800-559-6627

Up-Country Kona Plantation Living just 3 miles to Kailua-Kona with easy airport access. Big Beds, Pvt. Baths, Spa, Stream, Waterfalls, VCR Lib. Fresh ranch eggs, homemade breads, local fruits & juices, Pure Kona Coffee. Snorkle & Beach Equip. Rooms from \$50, Cottages from \$100, fax 326-5487.



HAWAII ISLAND B&B ASSOCIATION

12. Merryman's B&B P.O. Box 474, Kealahou, HI 96750 Ph: (808) 323-2276 1-800-545-4390

Charming ocean view B&B in Kealahou, minutes from the best snorkeling. Enjoy immaculate, spacious rooms furnished w/antiques & fresh flowers. A delightful Hawaiian breakfast of fresh fruits, chef's special & Kona coffee is served each morning. Snorkel gear & beach supplies provided.

13. Three Bears's B&B Innkeeper: Anne Stockel, 72-1001 Puukala, Kailua-Kona, HI 96740 Ph/fax: (808) 325-7563, 1-800-765-0480

Enjoy spectacular ocean views from our new cedar home nestled amongst tropical fruit trees & flowers. Located above Kona Coast Beach Park, our rooms feature private baths, TV, micro, refrig., coffee maker. A hearty breakfast is served on the lanai. Wir sprechen Deutsch.

VOLCANO REGION

14. Carson's Volcano Cottage Innkeepers: Tom & Brenda Carson, P.O. Box 503, Volcano, HI 96785 Ph: (808) 967-7683 1-800-845-LAVA

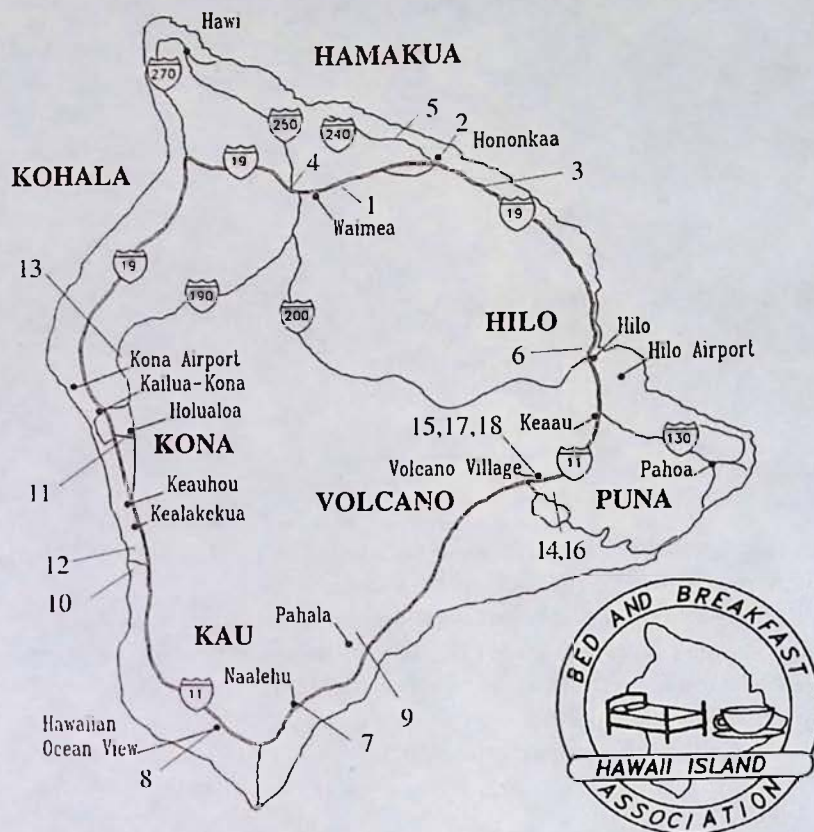
Secluded, peaceful B&B next to Volcano Ntl. Park. Beautiful theme rooms, with botanical garden views. Unique Bromeliad collections. Romantic outdoor jacuzzi. All rooms have private entrances and baths. Some with fireplaces. Rates start at \$65.00 night.

15. Chalet Kilauea-The Inn at Volcano P.O. Box 998, Volcano Village, HI 96785 Ph: 1-800-937-7786

EXPLORE TREASURES FROM AROUND THE WORLD. Amazing Theme Rooms, Tree House suite (\$75-\$175). Amenities include: jacuzzi, TV, fireplace, library, sunken tub, robes, flowers, chocolates, maid service, afternoon tea and a candlelight 2-course gourmet bkfast. Just outside Volcanoes National Park.

16. Hale Ohia Cottages Innkeeper: Michael Tuttle, Box 750, Volcano, HI 96785 Ph: (808) 967-7986, 1-800-455-3803

Noted in the NEW YORK TIMES, the SOPHISTICATED TRAVELER, historic hideaway, unique architecture, garden setting, fireplaces, heated Japanese Furo, breakfast brought to your room. All accommodations have private baths. One mile from Natl. Pk., Rates: \$60 to \$95.

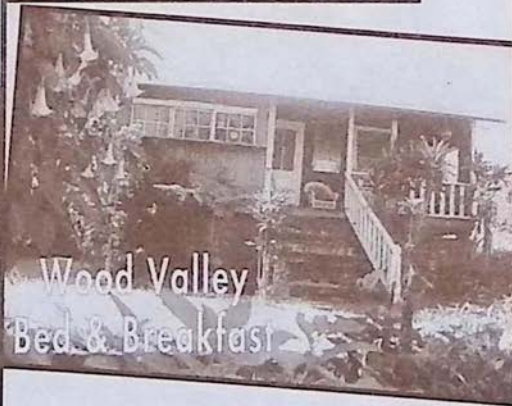
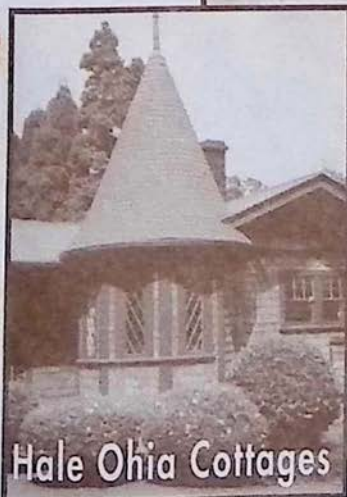


17. Lokahi Lodge P.O. Box 7, Volcano, HI 96785 Ph: (808) 985-8647 or 1-800-457-6924

Newest, affordable LUXURY B&B in Volcano. 1 mile to Volcano Ntl. Park, offers accommodations with private baths & entrances to each room. A sumptuous breakfast includes fresh baked homemade bread, juices, fruits, jams, coffee and teas. A haven for those who want to be pampered!

18. My Island B&B Innkeepers: Gordon & Joann Morse, P.O. Box 100, Volcano, HI 96785 Ph: (808) 967-7216, 808-967-7110, Fax: 808-967-7719

An 1886 historic missionary home at Kilauea Volcano surrounded by a 5 acre botanical estate. Rooms in main 3 story house with shared or private bath. Couples, singles & families welcome. Full breakfast. \$30 to \$75. All the macnuts you can eat.



Our Monthly Big Island Bed & Breakfast Review

WAIPIO WAYSIDE BED AND BREAKFAST INN: Innkeeper: Jacqueline Horne. P.O. Box 840, Honokaa, HI 06727. Phone/Fax: (808) 775-0275, 1-800-833-8849. Rates: \$50 to \$100. Notes: Wheelchair accessible.

*L*ocated close to the entrance of Hawaii's Valley of the Kings, Waipio Wayside Bed and Breakfast Inn is a quiet and relaxing retreat for adventuresome explorers or weary travelers. You can relax in the large double hammocks on the spacious deck or sit in the gazebo and whale watch.

Afternoons are filled with pure Hamakua Coast organic coffee (Kona and Blue Mountain coffee trees) and an array of Republic of Tea teas. Enjoy lively conversation and experience the gracious hospitality of an old plantation home.

The Inn offers five bedrooms that have been renovated & decorated to preserve the character of Old Hawaii. Two with private bath, one 1/2 bath and two shared bath.

The Inn is a traditional B&B that serves generous home cooked breakfasts and encourages interaction with its international clientele. Your hostess, Jacqueline Horne, is an expert on hiking trails and a great source of information on the island.

Call today for more information.



Waipio Wayside is located outside of the sugar town of Honokaa on the way to Waipio Valley.

BECKY'S BED AND BREAKFAST: Innkeepers: Becky & Chuck McLinn. P.O. Box 673, Naalehu, HI 96772. (808) 929-9690, 1-800-235-1233. Rates: \$38 and up. Notes: Private baths, entrances.

*B*ecky's Bed and Breakfast is located in the southern most town in the United States. The lodge boasts a style of old Hawaii while the house decor consists of articles from Alaska, the McLinn's former residence. Every morning at Becky's brings guests a full breakfast consisting of Big Island sweet bread french toast, local banana hot cakes, and chilled fresh island fruits. The nicest part of the breakfast is that it is ALL YOU CAN EAT! Located within five miles from both the high soft cliffs of Mahana Beach (Green Sands Beach) and the abundant sea turtle Punaluu Black Sand Beach, Becky's is located in one of Hawaii's most rural town settings. Thirty miles from Naalehu on Hwy. 11 is the Volcanoes National Park and in between is the sugar town of Pahala that continues its plantation operations to this day. When your done sight seeing the Ka'u region return to Becky's and relax under the one hundred year old monkeypod tree or enjoy a glass of wine in the B&B's hot tub. Wonderful star gazing opportunities are available from the back lanais of the inn. Located half way between Kona and Hilo we hope you will find the time to visit us and our unique setting in Hawaii, Becky and Chuck.



From under a monkey pod tree is the rural setting of Becky's B&B in Naalehu Town.

Coffee Talk on Local Art

April Opening of Hilo's Mauna Kea Gallery,

*M*auna Kea Galleries, the State's only gallery devoted to the Hawaiian and Polynesian past, has announced its grand opening in April. Specializing in the buying and selling of items from Hawaii's and other islands' past, this new gallery represents the owner's unique accumulation of items bought over the last twenty years. There is a diversified stock of rare books, paintings, ephemera, photographs, engravings, quilts, artifacts, hula lamps, furniture, monarchy items, jewelry, souvenir spoons, etc. This is a must stop for visitors and Kama'ainas alike.

Some of the unusual items in the vast gallery stock are paintings from Hawaii's "Old Masters" such as D. Howard Hitchcock and Joseph Strong. In the area of rare books on Hawaii and Polynesia is the state's largest selection of titles from the 18th and 19th century, including early accounts of "Cooks Voyages." The rare first edition of the Hawaiian classic "Ellis Tour of Hawaii" is also available.

A large stock of ephemera is also carried, including a large selection of postcards, posters, advertising items, menus, etc. all featuring Hawaiian and Polynesian subjects. Rare vintage photographs from the 19th and early 20th century are also featured including early period views of Hawaii's monarchy and native life in the islands.



An abundance of museum quality artifacts from Hawaii including 18th century wood calabashes from Hawaii and the proprietor's favorite piece, a pair of woven lauhala shoes which are an accession from a west coast institution that once belonged to King Kamehameha the First. Both of these items are quite remarkable.

Some of the more interesting items from the other islands of Polynesia are intricately carved ceremonial paddles from the Austral Islands dating to the first quarter of the 19th century as well as unusual items such as stilt steps from the mysterious Marquesas Islands, which also date to the 18th century.

Needless to say this amazing new gallery is a treasure from the past and represents the only one of its type in the world devoted entirely to the Hawaiian and Polynesian past. No trip to the Big Island would be complete without a stop at Mauna Kea Galleries. Open five days a week the gallery is located in the Historic Court Mauna Kea Building at 276 Keawe Street at the corner of Furneaux and Keawe. (refer to the map on page 13) Call 969-1184 for gallery hours and more information.

These 1901 Nichols issued souvenir playing cards are just one of the many unusual items you will find in Mauna Kea Gallery's stock of ephemera.

Edward's
AT THE TERRACE

Restaurant
à *Bourgogne*



CAFE
Pesto

Big Island Dining Experiences



KILAUEA LODGE

DON'S *Family* DELI



HILO

CAFE PESTO: (pgs. 13) Cafe Pesto has extended its service to the historic S. Hata Building in downtown Hilo. While the cuisine remains similar to what is offered at the original Kawaihae location diners can experience the tastes of wood fired pizzas and local dishes such as fresh fish and lomi lomi served on a bed of noodles. Organic produce and edible flowers complement the reasonably priced food which is always "an adventure in taste".

KOHALA / HAMAKUA

BAMBOO RESTAURANT & GALLERY: (pg. 24) At Bamboo you will find warm "Old Hawaii", featuring fine Hawaiian Regional Cuisine and "Local Style" food. Located in a fully restored historic building, Bamboo is a tropical restaurant, with "the best atmosphere on the island!" Here, local people gather in the deep old wicker chairs for passion fruit margaritas, Hawaiian entertainment, and Sunday Brunch. Try to catch one of their "theme nights" for a truly special evening. Browse and find a gift in the Kohala Koa Gallery of fine art and Pacific handcrafts. Open for Lunch & Dinner: Tuesday- Saturday till 9:30pm. Sunday brunch, 9-2:30pm. Closed Mondays.

CAFE PESTO: (pg. 23) Cafe Pesto has earned a reputation as an innovator of provocative island cuisine specializing in Pacific rim pizzas, pastas, salads and seafood served in a setting of casual elegance. the menu draws upon fresh organic produce from Puna and edible flowers and herbs from Hualalai and Volcano. With locations in downtown Hilo and south Kohala's Kawaihae, Cafe Pesto is reasonably priced and always, "an adventure in taste".

DON'S FAMILY DELI: (pg. 25) Just 6 miles before the end of the road there is an oasis of food and drink. A variety of meats, cheeses and breads. That's what makes it a deli. Also bagels, cream cheese, and lox and cappuccino make it a good place to sit and talk. Our garden room faces the King's statue across the road. To round out the menu we cater to vegetarians with quiche, enchiladas and lasagnes. We always have two soups, fresh carrot juice and our famous fruit smoothies and remember that everything travels well; to the end of the road at Pololu Valley lookout and the beach parks near by. Deserts, salads and dip ice cream also. Plenty of parking and always a refreshing breeze.

SIMPLY NATURAL: (pg. 14) Located in Honokaa town, Simply Natural combines a flare for fun and nostalgia as guests are greeted daily by Sharon Bethausser, owner and operator of this one woman show. The ice cream parlor/deli/soda fountain delivers one of the more unique dining experiences you will ever find. Sharon's breakfasts include such fixings as taro pancakes while lunch serves up selections of homemade sandwiches made while you wait. If you decide not to eat you should at least try a Simply Natural old fashion ice cream soda or a scoop of Hilo ice cream. The spinning

stools at the counter and the attached game room conjur up childhood memories to make Simply Natural a choice spot for both young and old.

WAIMEA COFFEE AND COMPANY: (pg. 19) Located at Parker Square on Hwy. 19 as you drive through beautiful upcountry Waimea. Sample the finest world-class coffees, cappuccino and gourmet treats at this friendly oasis. David Ellis and his cheerful staff will make you feel at home at this cozy country cafe- a great place to stop for lunch or for a welcome break in your day. Enjoy a variety of estate-grown pure Kona coffee as well as gourmet coffees from around the world, and take advantage of their easy mail order service to send coffee home. A perfect way to savor the relaxed pace and quality lifestyle of this beautiful area.

KONA

EDWARD'S AT THE TERRACE: (pg. 26) Edward's at the Terrace is Kona's only ocean front restaurant featuring the cuisine of the Mediterranean region of Europe. Edward's is located on the grounds of the Kanaloa Condominiums in Keauhou, and is open for breakfast, lunch and dinner from Tuesday thru Sunday. Let the soft crash of the waves sooth your mind as you dine on such things as couscous grilled shrimp and babaganous, or robust fisherman's soup served under a puff pastry crust. For lunch you may select an old familiar favorite such as salade nicoise topped with fresh grilled tuna or one of the best burgers you'll have anywhere. Breakfast offers such treats as apple spice sausage patties and a family special of eggs and bacon.

LA BOURGOGNE FRENCH RESTAURANT: (pg. 40) Located just 3 miles south of Kailua-Kona this small, intimate restaurant makes you think you might be at a delightful French Country Inn. Chef/Owner Ron Gallaher features the simple, flavorful food of the Burgundy Region of France created from the freshest of local ingredients. In addition, La Bourgogne's wine list includes quality selections from Burgundy and California at modest prices. Open Monday through Saturday from 5:30pm to 10:00 pm. Reservations recommended at 329-6711. All major credit cards accepted.

THE COFFEE SHACK: (pg. 33) Kahauloa Coffee Company's Coffee Shack is a must see for the whole family. It is located on the most spectacular stretch of coastline in Kona. Surrounded by the coffee trees that bear the famous coffee cherries have a cup of freshly brewed Kona coffee in our Deli and Espresso Bar while overlooking a beautiful valley of coffee farms and the miles of coastline. Our menu includes fresh pastries and breads, quiches, pizza and deli sandwiches. Open at 6am we're here to serve you breakfast or a great tasting latte or cappuccino on your trip through South Kona.

WAKEFIELD GARDENS & RESTAURANT: (pg. 32) For that old time feeling provoking life-long memories visit

Wakefield Gardens & Restaurant. Enjoy relaxed charm while dining amid the personal, friendly, uncrowded, fragrant botanical atmosphere. World-wide letters relate our best features. Aloha Spirit- a warm welcome giving an "at home" feeling; Old Time Hawaiian Music, Fresh - Clean - Wholesome Food, Something for everyone and our Strawberry Papaya filled with special tuna salad received 4 stars in Gourmet Magazine; Kona hot or iced coffee. Kids cheeseburgers, vegetarian fare, homemade macadamia nut pies, reasonable prices. Free botanical garden self-guided tours. Open 11am - 3pm. Spread the word - the magic of romantic Hawaii still exists. Aloha!

PUNA

NUANG MAI THAI CUISINE: (pg. 10) Looking for authentic Thai cuisine? Look no further because there is a gem called Nuang Mai in historic Pahoa village that is about as close to the tastes of Thailand you will ever get without actually landing in Asia. From Cheng Mai, Bangkok and Phuket styles of cooking guests are able to choose from numerous stirfries and curries as well as rice and noodle dishes that include many vegetarian dishes. Among the favorites are the Evil Jungle Chicken and Cashew Chicken dishes as well as the red, green and yellow curries. Also very popular are the non-fried vegetarian spring rolls that are made daily. Dessert at Nuang Mai brings homemade tapioca pudding, which owner Alisa Wade first learned to make back on her Thailand farm where the family grew the tapioca plant. Make sure a meal at Nuang Mai is included in your stay if you are planning on visiting the village of Pahoa.

THE GODMOTHER - RISTORANTE ITALIANO: (pg. 10) A pleasant surprise awaits you. Located amid romantic surroundings on Main Street in Historic Pahoa Village, the large menu features delectable pasta selections and traditional New York-style family recipes. With indoor-outdoor dining, the Godmother is serving breakfast and lunch from 8am until 3 pm and dinner from 5 pm until 11 every day. Stop by, meet the family, enjoy the ambiance and savor the food. Daily specials, a full bar and a friendly staff combine to create the perfect occasion. Major credit cards welcome. Ciao Bella!

VOLCANO

KILAUEA LODGE: (pg. 7) Well known for Chef/Owner Albert Jeyte's Continental-local cuisine, Kilauea Lodge is located in the cool sub-alpine rain forest region of Volcano. the misty region encourages a hearty appetite and Chef Albert, whose menu favors fish and fowl, does not disappoint. An inspired wine list, helpful staff, Hawaiian decor, and historic Fireplace of Friendship, make Kilauea Lodge a memorable experience. Open nightly 5:30-9:00pm. Reservations recommended. Located one mile Hilo-side of Volcanoes National Park.

The Godmother
Ristorante Italiano

WAKEFIELD GARDENS & RESTAURANT

bamboo

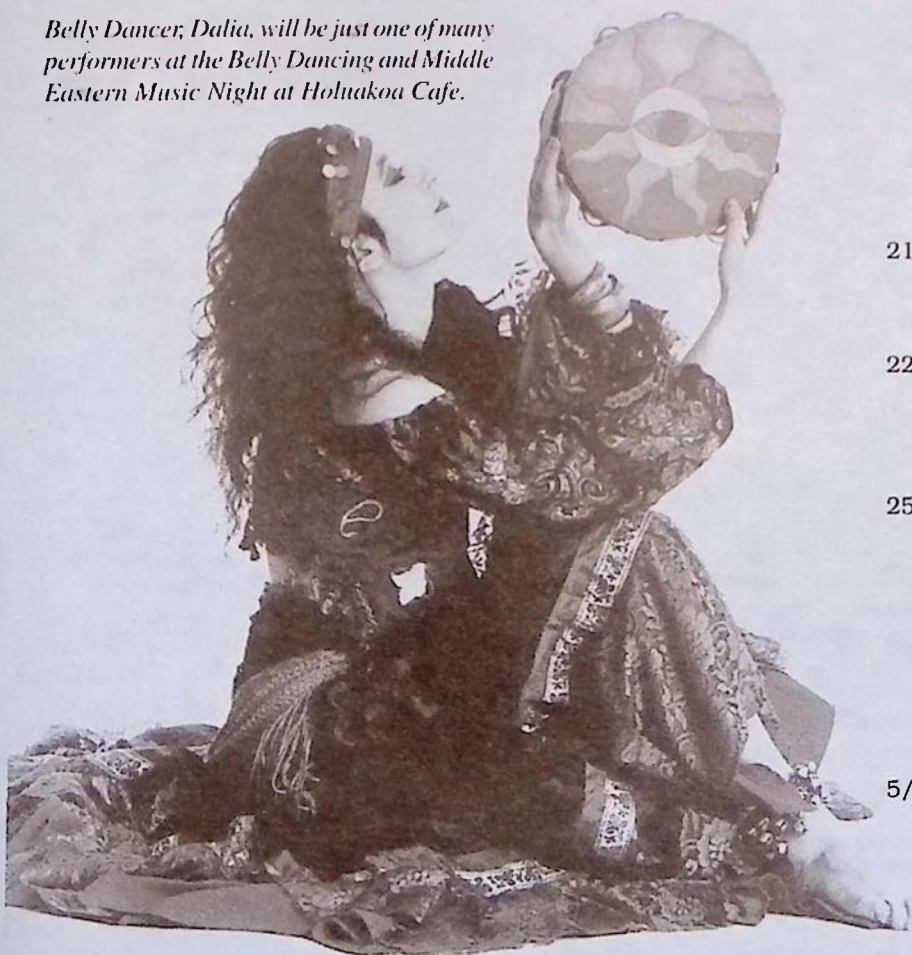


Nuang Mai
Thai Kitchen

April On The Big Island

- 1-31 **BOSCO THE AMAZING ONE MAN BAND LIVE!**
Free! Live music outside at the Kona Inn Shopping Village. Also, free reviews of Bosco's new Big Island music video "Hangin' With Bosco! Hawaii." The Video is filled with music, comedy, and the awesome beauty of Hawaii- by land, sea, and air! Bring your dancin' shoes and have some fun. Wednesday through Saturdays at 7pm, Kona Inn Shopping Village, Alii Drive, Kailua-Kona. 322-6604 for more info.
- 1-31 **KOHAHA COMMUNITY ARTS PROGRAM**
Host of classes including theatre, ballet, movement explorations, oriental dance, folk dancing, Hawaiian Lei making, hula lessons, Japanese language lessons, conversational French, drawing, watercolor, oil and acrylic painting, minute art, tai chi, common sense, gymnastics and shamanic journeying will all be offered. Call 889-0421 for more info.
- 1-9 **THE SOCIETY FOR HAWAIIAN ARCHAEOLOGY DISPLAYS EXHIBIT AT THE KONA HISTORICAL SOCIETY**
Also available at the display will be a full color poster for Archaeology Week done by Herb Kane. For more info, call the KHS at 323-3222.
- 1 **HAUNANI-KAY TRASK READING**
Haunani-Kay Trask will read from "Lights in the Crevice Never Seen." It is the first book of poetry by an indigenous Hawaiian to be published in North America and is a revelation about a native woman's love for her land. The reading will be free of charge. Cooper Center, Volcano, Call VAC at 967-8222 for more info.
- 4-29 **SPACE ARTIST**
and Arizona resident, Bill Hartman displays oil landscapes. Mini Fountain Gallery, Wailoa Center, Hilo, 933-4360
- 5-29 **MERRIE MONARCH QUILT SHOW**
A collection of Hawaiian Quilts from Kama'aina families and aikane's coordinated by Junedale Quinones and Margaret Webster. Daily quilting demonstrations will be given during this display. Upstairs Gallery, Wailoa Center, Hilo, 933-4360.

Belly Dancer, Dalia, will be just one of many performers at the Belly Dancing and Middle Eastern Music Night at Holuakoa Cafe.



- 8 **KONA HISTORICAL SOCIETY OFFERS HISTORICAL JEEP TOUR AROUND SOUTH POINT**
In celebration of Archeology week (April 1-9) there will be an historical jeep tour around South Point with archeologist, Lloyd Soehren, and Kona Historian, Jean Greenwell, as our guides. The tour will explore the coastline between Kaalualu and South Point which abounds in historic ruins, petroglyphs, canoe moorings, and natural phenomena. Visitors and locals should call KHS at 323-3222 for space reservations or more information.
- 8.10 **BELLY DANCING AND MIDDLE EASTERN MUSIC - LIVE AT THE HOLUAKOA CAFE**
Returning to the Big Island for the fifth time from New York City, Souren Baronian plays clarinet, flute, dumbek (hand-drum) and def (tambourine), while Haig Manoukian performs on oud (an eleven string instrument resembling a lute). These two musicians have performed world-wide, including Carnegie Hall and on the Tonight Show. Featured dancers are Dalia (who has performed at the Lincoln Center in New York), Sahira and Elisheva (from Hilo). Call Meggie at 322-CAFE (2233) for more info. Holuakoa Cafe is located in Holualoa Village above Kailua.
- 11 **AFTER DARK IN THE PARK PRESENTS: "Volcanic Impacts on Human Society: A Geological Perspective"**
In this trilogy of accounts by Hawaiian Volcano Observatory staff members, geologist Christina Heliker will discuss the impact of Kilauea's ongoing eruption on Puna's prehistoric sites and present day communities. Geophysicist Jim Kauahikaua will detail methods of using magnetometers to locate archeological features inundated by lava. Geologist Jack Lockwood will explore the effects of Mauna Loa's eruptions on human societies during the last 1,500 years. 7pm. Kilauea Visitor Center Auditorium, Volcanoes National Park. 967-7184.
- 18 **AFTER DARK IN THE PARK PRESENTS: "Hawai'i in Transition: Vision for a Sustainable Future"**
Hawai'i's social and economic change offers both challenge and opportunity. A half-hour video, produced by ECO Productions and the Institute for a Sustainable Future, will focus on traditional and modern models for sustainable development. Following the video, Ka'u resident Eugene Dudoit will discuss his recycling and macadamia nut composting business. Hilo High teacher Mike Hosford will report on his students' appropriate technology program, which includes a solar powered vehicle project. 7pm. Kilauea Visitor Center Auditorium, Volcanoes National Park. 967-7184.
- 21 **SOUTH KONA EDUCATION ASSOCIATION PRESENTS: Adult Pottery Class with Carol Carol**
SKEA is located on Hwy. 11 between mile markers 106 and 105 in South Kona. Call 328-9392 for more information.
- 22 **SOUTH KONA EDUCATION ASSOCIATION PRESENTS: Taiko Drum Artist, Kenny Endo**
4pm performance on the grounds of SKEA in Honaunau. SKEA is located on Hwy. 11 between mile markers 106 and 105 in South Kona. Call 328-9392 for more information.
- 25 **AFTER DARK IN THE PARK PRESENTS: "Malama Aku, Malama Mai: The Intrinsic Relationship between Taro and Humans"**
Throughout Hawaiian history, humans and taro have shared in a family relationship. Nalei Pate and Ku Kahakalau, Hawaiian educators and Waipi'o Valley taro farmers, will discuss the cultivation and traditional approach in educating native Hawaiians. Their oli, mele and hula will spotlight taro's ancient and modern significance. 7pm. Kilauea Visitor Center Auditorium, Volcanoes National Park. 967-7184.
- 5/5,6 **HAWAII ISLAND HEALTH & FITNESS SYMPOSIUM/EXPO**
at the King Kamehameha Kona Beach Hotel. Guest Speakers, Breakfast Sessions, Activity Sessions, Give Aways. Friday, May 5 from 12noon to 5pm, and Saturday, May 6 from 8am to 12noon. For more info. call 322-0033 (West Hawaii) 933-4539 (East Hawaii).



Coffee Mill and Farm Tour



Open Daily 9am to 5pm (FREE)



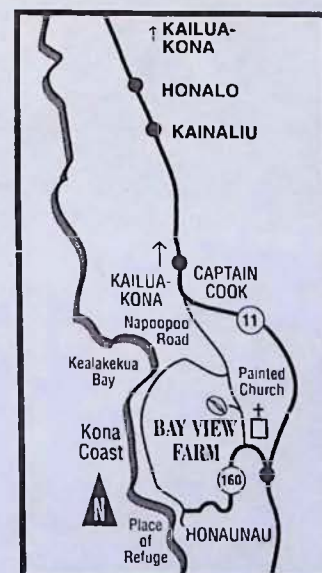
See first hand how coffee is farmed and milled in Kona and view our historic Kona coffee photo display as well as a collection of 18th & 19th century Hawaiian prints. We specialize in only 100% certified Kona™ coffee and are a complete processing & roasting facility. And, stop at our visitor center to purchase some 100% Kona™ coffee.

Spectacular Views of Kealakekua Bay from the Bay View Gazebo!

(Call ahead for special group tours)



For Mail Orders
Call or Write:
1-800-662-5880
(808) 328-9658
Fax orders: **328-8693**
P.O. Box 680, Honaunau,
HAWAII 96726



Daily Farm Tours



Come and visit our family owned Kona Coffee Estate where coffee is hand picked and milled the old fashioned way. Our estate certified 100% Kona™ coffee beans are sundried and air roasted to perfection. We personally guarantee the pure and fresh taste of Kona in every bag of coffee we sell.

Open Daily (You may call ahead for an appointment)
Located between mile markers 104 & 105 on Hwy. 11
(just north of Honaunau State Baseyard - Look for sign)

808-328-8356

84-4956 Mamalahoa Hwy., Capt. Cook, HI 96704

Hawaiian Brushes



**Locally
Hand Crafted
Hairbrushes
and Mirrors**

*Made From Select
Native Hardwoods
Koa, Milo, Mango,
& Sandalwood*

Hawaiian Brushes and Mirrors, carefully hand-crafted by local artisans, are made to be heirloom pieces for everyday use. The woods of Koa, Milo, Mango, Hala, Sugi and Sandalwood give a varied and unique appearance to each Brush and Mirror. There are twelve different brush-head/handle styles and seven mirror styles from which to choose. The brushes with Chinese Boar Bristles can easily be removed for cleaning and replacement. Each use promises to help beautify your hair and energize your scalp. Hold or Gift a piece of Royal Hawaii for years of Beauty, Usefulness and Satisfaction.

Available at selected Art & Craft Galleries, Gift Shops
and other locations throughout the Islands.

Call (808) 775-9958 for more retail information. Enjoy & Mahalo!

La Bourgogne announces a novel concept in dining: *fine wine at reasonable prices.*

In a recent survey of wine lists at other top Big Island restaurants, we found the very same wines priced from 25% to 150% more than at La Bourgogne. But then, we think a bottle of fine wine should add enormously to your meal. Not your bill.

Exceptional Wines

Restaurant
La Bourgogne

Exceptional Prices

(LAH BOR-GOAN-YUH)

CUISINE FRANCAISE

"...the classic French cuisine at this wonderful, intimate place may be the best in Kona."

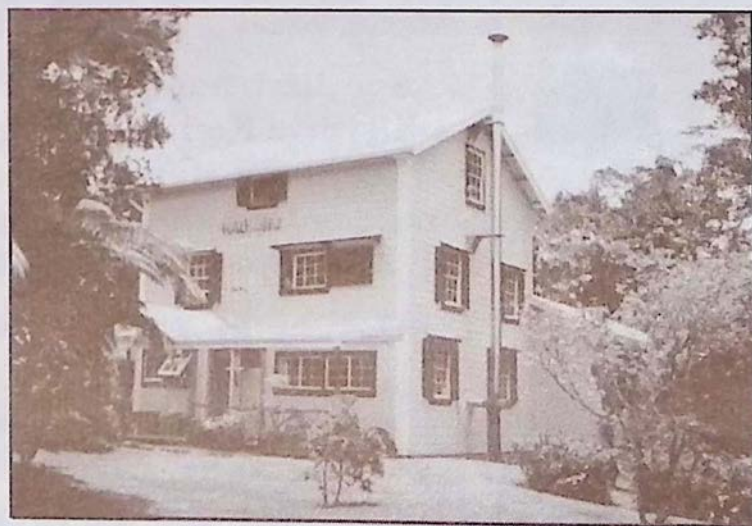
THE ZAGAT RESTAURANT SURVEY

Open 6:00 to 10pm, Monday through Saturday
Located Just 3 miles south of Kailua-Kona on Hwy. 11

RESERVATIONS RECOMMENDED

329-6711

MY ISLAND BED & BREAKFAST AT VOLCANO



Featuring...

- ~All the macadamia nuts you can eat~
- ~A variety of rooms at a range of prices~
- ~We serve a "stuff-yourself" breakfast~
- ~Located on a 5-acre estate full of flower gardens~
- ~Personalized touring information for East Hawaii~
- ~Come spend time in our 108-year old historic house~

967-7216 OR 967-7110

(See our listing in B&B section)