

The Alternative Visitor's Guide

FREE

BULK RATE
U.S. POSTAGE
PAID
KAILUA-KONA, HI
PERMIT NO.
40-125



Coffee Times

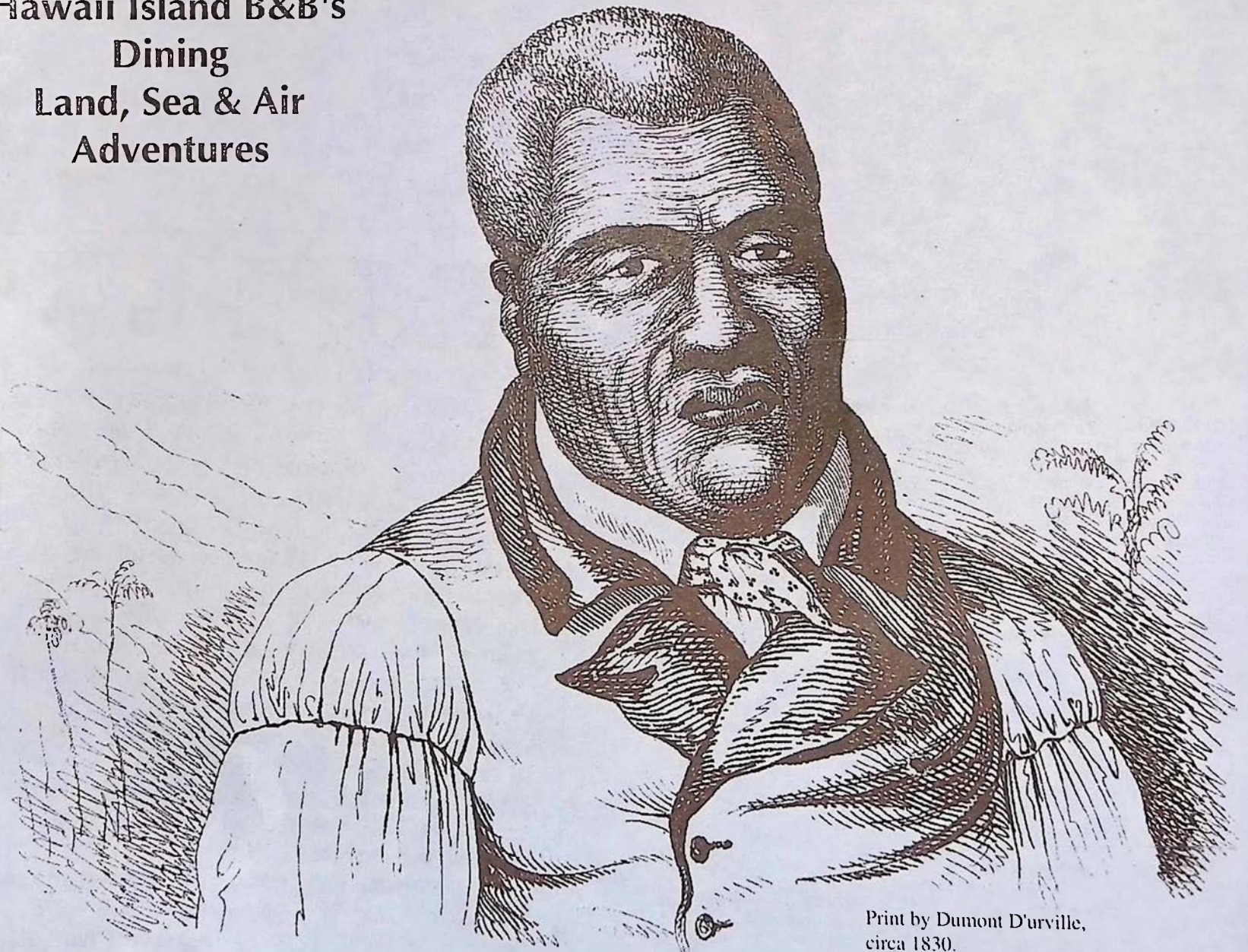
February 1995 / Big Island of Hawaii / Volume 2 Edition 11

Inside:

Historic Sights
Hawaii Island B&B's
Dining
Land, Sea & Air
Adventures

CAPTAIN COOK'S FIRST THREE DAYS IN HAWAII

JANUARY 18 TO 20, 1778



Print by Dumont D'urville,
circa 1830.

Kamehameha I

Advertisers:

ART GALLERIES

| | | |
|----------------------|----------|-------|
| Ackerman Galleries | 889-5971 | P. 25 |
| Cook's Discoveries | 885-3633 | P. 17 |
| Cottage Gallery | 328-9392 | P. 32 |
| Upcountry Connection | 885-0623 | P. 18 |
| Volcano Art Center | 967-8222 | P. 8 |
| Wo On Gallery | 889-5002 | P. 24 |
| Woodcarver's Corner | 985-8518 | P. 9 |

COFFEE FARMS

| | | |
|----------------------|----------|------|
| Bay View Farm & Mill | 328-9865 | P 39 |
| Langenstein Farm | 328-9486 | P 40 |
| Old Hawaiian Coffee | 328-2277 | P 3 |

COFFEE RETAILERS AND CAFES

| | | | |
|---------------------|----------------|----------|-------|
| Bad Ass Coffee Co. | 1-800-338-7139 | 322-2646 | P 6 |
| Holuakoa Cafe | | 322-CAFE | P. 30 |
| Kahauloa Coffee Co. | | 328-9555 | P 33 |
| Kohala Coffee Mill | | 889-5577 | P. 23 |
| Waimea Coffee & Co. | | 885-4472 | P 19 |

DINING

| | | |
|---|------------------|-------------------------|
| Bamboo (Pacific Rim, Thai.) | 889-5555 | P. 24 |
| Cafe Pesto (Pacific Rim Italian) | Kaiwaha 882-1071 | Hilo 969-6640 P. 13, 23 |
| Don's Deli (International) | 889-5822 | P. 25 |
| Edwards at the Terrace (Mediterranean Classics) | 322-1434 | P. 26 |
| Jolene's Kau Kau Korner (Cafe) | 775-9498 | P. 14 |
| Jill's Country Kitchen (Deli, Bakery) | 329-6010 | P. 27 |
| La Bourgogne (French) | 329-6711 | P. 40 |
| Luquin's Mexican Restaurant (Mexican) | 965-9990 | P. 10 |
| Mamane St. Bakery | 775-9478 | P. 14 |
| Mateo's Pizza | 775-0944 | P. 14 |
| Nuang Mai (Thai Kitchen) | 965-8186 | T. 10 |
| The Godmother (Italian) | 965-0055 | P. 10 |
| Waketfield Gardens (Home Cooked) | 328-9930 | P. 32 |

LODGING

| | | | |
|---------------------------|----------------|----------|-------|
| Becky's B&B | | 929-9690 | P. 5 |
| Bougainvillea B&B | | 929-7089 | P. 5 |
| Carson's Volcano Cottages | | 967-7683 | P. 8 |
| Chalet Kilauea | | 967-7786 | P. 9 |
| Hale Kai B&B | | 935-6330 | P. 13 |
| Hale Maluhia B&B | 1-800-559-6627 | 329-1123 | P. 30 |
| Hale Ohia Cottages | | 967-7986 | P. 9 |
| My Island B&B | | 967-7216 | P. 40 |
| The Village Inn | | 965-6444 | P. 10 |
| Waipio Wayside | 1-800-833-8849 | 775-0273 | P. 40 |
| Wild Ginger Inn | | 935-5536 | P. 13 |

MUSEUMS

Kona Historical Society 323-3222 P. 33

AIR, LAND AND OCEAN ADVENTURES

| | | |
|---|----------|-------|
| Atlantis Submarines (Submarine Adventure) | 329-6626 | P. 26 |
| Blue Hawaiian Helicopters | 961-5600 | P. 12 |
| Chris' Adventures (Bike, Hike) | 326-4600 | P. 24 |
| Dan McSweeney Whale Watch | 322-0028 | P. 11 |
| Hawai Forest & Trail (Nature Hikes) | 329-1993 | P. 3 |
| Impulse Charters (Sport Fishing) | 325-7749 | P. 36 |
| Kona Kai Yak (Tours, Rentals, Sales) | 326-2922 | P. 27 |
| Lanakila (Snorkel, Sail, Whale Watch) | 987-3999 | P. 16 |
| Nautilus Submarine Experience (Underwater Reef Tours) | 326-2003 | P. 3 |
| West Wind Sailing Charters | 325-6471 | P. 3 |

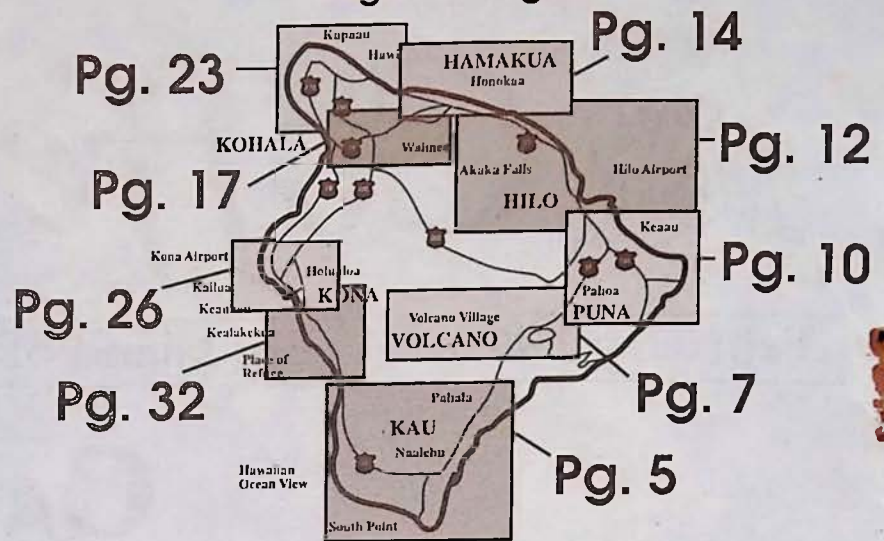
SPECIALTY SHOPS & SERVICES

| | | | |
|------------------|----------------------------|----------|-------|
| Antiques | Honokaa Trading Co. | 775-0808 | P. 14 |
| Book Stores | Island Books | 322-2006 | P. 29 |
| Clothing | Hawaiian Hemp Co. | 965-8600 | P. 10 |
| | Princess Kaiulani Fashions | 885-2177 | P. 17 |
| General Stores | Bentleys | 885-5565 | P. 19 |
| | Naalehu Fruit Stand | 929-9009 | P. 5 |
| | Pahoa Natural Groceries | 965-8322 | P. 10 |
| Ice Cream | Simply Natural | 775-0119 | P. 14 |
| | Tropical Dreams | 889-0505 | P. 24 |
| Gardens | Akatsuka Orchid Garden | 967-8234 | P. 7 |
| Live Music | Bosco the One Man Band | 322-6604 | P. 16 |
| Photo Developing | One Hour Moto Photo | 329-2080 | P. 27 |
| Psychic Readers | Rev. Waldron & Montana | 885-8355 | P. 22 |
| Publications | Ka'u Landing | 929-8130 | P. 29 |
| Real Estate | Kohala Pacific Realty | 889-5181 | P. 25 |
| Spa Service | Querencia Spa | 328-2569 | P. 32 |
| Tattoo | Big Island Tattoo | 329-7384 | P. 16 |

THEATRES

| | | | |
|------------------------------|----------------|----------|-------|
| Aloha Performing Arts Center | (see calendar) | 322-9924 | P. 28 |
| Kona Market Place Cinemas | | 329-4488 | P. 26 |

Regional Pages



COFFEE TIMES©

For calendar inserts, historical comments or TO RESERVE AD SPACE

Call or write the publisher, Les Drent, at: (808) 326-7637

P.O. BOX 1092 Captain Cook, Hawaii 96704

PRINTED ON RECYCLED PAPER BY COFFEE TIMES PRESS

For Mainland Subscriptions:

Send \$50 for a lifetime subscription. Add \$10 if outside of USA. Mail to: Up Country Productions

P.O. Box 1092 Captain Cook, HI 96704

Read This ↓

UP COUNTRY is not the manufacturer, or an agent of the manufacturer, for the goods and services being advertised herein and therefore makes NO EXPRESS OR IMPLIED WARRANTY OF ANY KIND WITH RESPECT TO THOSE GOODS AND SERVICES. The publisher will not be responsible for typographical or printing errors, but will reprint without charge that portion of the ad in which the error occurs. Publisher accepts no responsibility for errors resulting from telephone insertions.

Illustrations used herein are for design purposes only and do not necessarily depict the actual items offered by the advertisers.

This publication may not be reproduced in whole or in part without the prior written consent of UP Country and reserves the right to edit, revise or refuse any advertisement.



Old Hawaiian Coffee

COME TOUR OUR HISTORIC
1870 COFFEE FARM

Take a *FREE* tour of our farm for the real story of how coffee is produced. We are located off Highway 11 in Honaunau, one tenth of a mile south of mile marker 105, just after the mailbox on the mauka side of the road.

"We'll take you from the tree to the roast."

Misha Sperka (farmer/owner)

HIGH QUALITY MODERN
COFFEE PULPING MILL

CERTIFIED ORGANIC
H.B.G.A.

(808) 328-2277

84-5042 A Mamalahoa Hwy.,

Captain Cook, HI 96704

Specializing only in 100% pure estate grown
Kona Coffee

West Wind Sailing Charters

Whale Watch
and Snorkel
on our Family
Overnighters

4-6 passengers
enjoy sailing on
our very spacious
41' ketch



(808) 334-3455



NAUTILUS II
SEMI SUBMERSIBLE

HAWAII'S SUBMARINE EXPERIENCE



Enjoy Both Topside and Underwater Viewing in our Air-Conditioned, 58-Foot, 34-Passenger Coast Guard Approved Vessel. No Age Limit. Day and Night Cruises, Special Group Charters Available

\$5 OFF
UNDERWATER RIDE
WITH THIS COUPON

For reservations call or stop in at our shop. We are located
across from the pier in Kailua-Kona

326-2003

EXPERIENCE THE BIG ISLAND NATURALLY



Photo by Jack Jeffrey

Explore remote native forest areas on guided nature adventures.

- Fully catered and equipped
- Natural, cultural, geological history
- Hakalau National Wildlife Refuge
Hualalai Volcano
- Easy to moderate walks
- Day trips with airport pickup
- Member of the Ecotourism Society

329-1993

H A W A I I
FOREST & TRAIL

P.O. Box 2975 Kailua-Kona, HI 96745



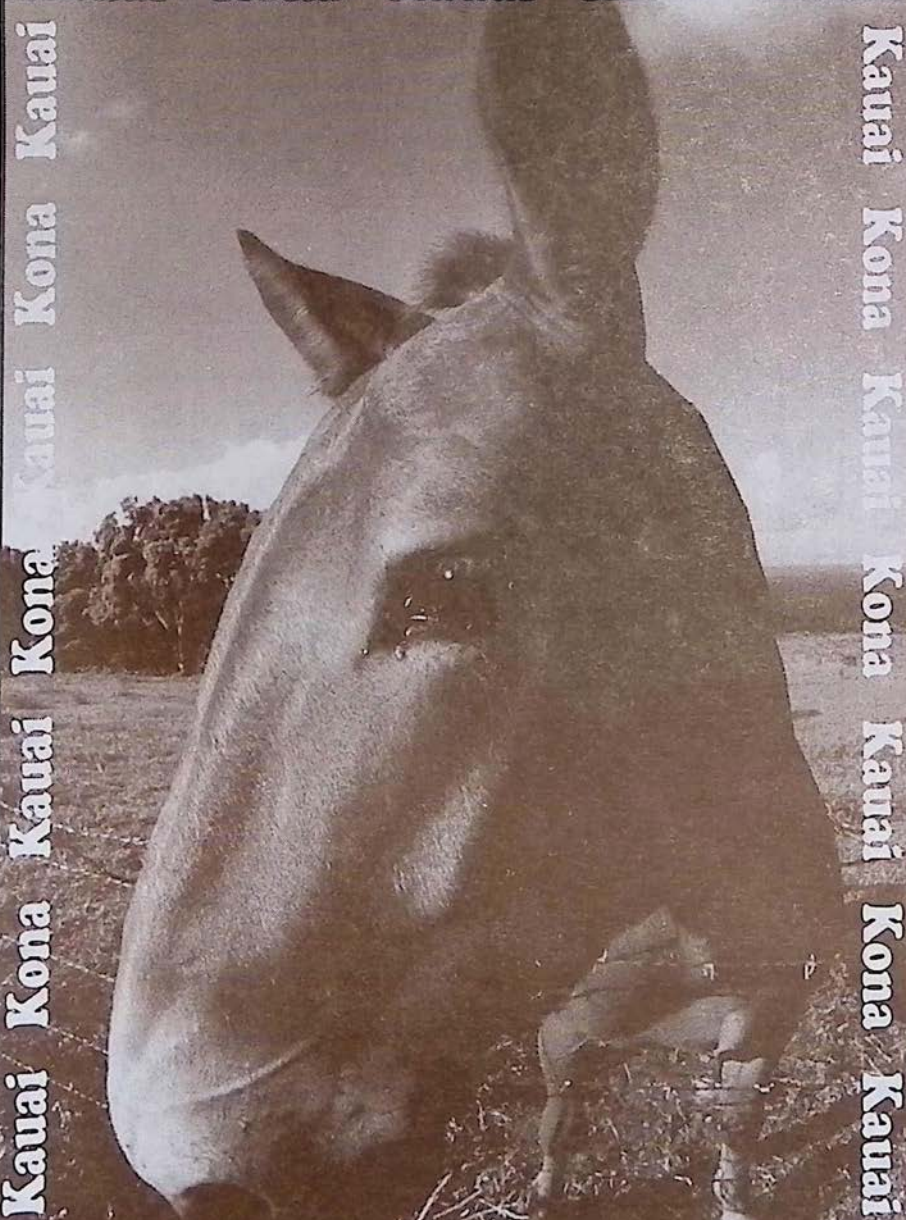
1-800-338-7139
(808) 322-2825
MAIL ORDER or INFO.

The Mighty Bad Ass Sweeps the Nation!

For a **FREE** brochure
 or to Mail Order call your
 nearest Bad Ass Coffee Store.

We are proud to introduce our new line
 of Kauai Coffee starting in February.

Kauai Kona Kauai Kona Kauai



We offer only the finest
100% Hawaiian Coffee.



BAD ASS STORES:

1. The Original Store
Kainaliu, HI
(808) 322-9196
2. Macadamia Nut Co.
Honokaa, HI
(808) 775-7743
3. 1110 Pensacola Street
Honolulu, HI
(808) 531-5882
4. Old Town, San Felipe St.
Santa Fe, NM
(505) 242-5409
5. 104 West San Francisco St.
Santa Fe, NM
(505) 989-7877
6. Waterfront Row
Alii Dr., Kailua-Kona, HI
(808) 326-4637
7. Bad Ass Warehouse
Alii Dr., Kailua-Kona, HI
(808) 329-8871
8. Bad Ass Coffee Shack
Kawaihae, HI
(808) 882-7019
9. 1280 S. Kihei
Maui, HI
(808) 875-8558
10. Central Ave.
Albuquerque, NM
(505) 247-1331
11. Parker Ranch
Shopping Cntr.
Kamuela, HI
(808) 885-7191
12. Uncle Billy's
Hilo Bay Hotel
Banyan Dr., Hilo, HI
(808) 322-2825
13. Hickam Air Force
Exchange
Honolulu, HI
(808) 423-0995
14. Ottawa, Canada
opening soon
15. Bourbon St.
New Orleans, LA
Opening April 1st
16. Telluride, CO
opening soon
17. 159 Kaiulani Ave.
Waikiki, HI
(808) 926-5662
18. Lahaina, Maui, HI
opening this summer
19. Keauhou
Shopping Center
Keauhou, HI
(808) 322-0100
20. 272 West St.
Keene, NH
(603) 355-8859

South Point: Land of Discovery

Ka'u Region

The actual place where Polynesians landed will always remain a mystery, but it was likely somewhere near the southern tip of the Big Island. This area seems a probable place because their approach would be from the South where all of Polynesia lay. When sailing North, the Big Island would be the first island they would see, and South Point would be the nearest landfall. Aside from the logic of such a choice, there is archaeological evidence supporting the supposition of a landing near Ka Lae, as the Hawaiians call the most southern tip of the island of Hawaii.

Excavation of lava tubes, that were used as shelters, near Kailikii and Waiahukuni, villages four miles Northwest of the Ka Lae, indicate people were using them by A.D. 750. There is other evidence that indicates people first were in the area as early as A.D. 200.

The cliff near South Point Park is a common mooring place for the modern day fishermen who find these waters a rich resource. From the precipice the drop is about forty feet to the ocean's surface, but the cliff base goes down another thirty feet below the surface of the water. Ladders, hung to make access to the boats easier, swing freely in the air just above the sea. The cliff is deeply undercut.

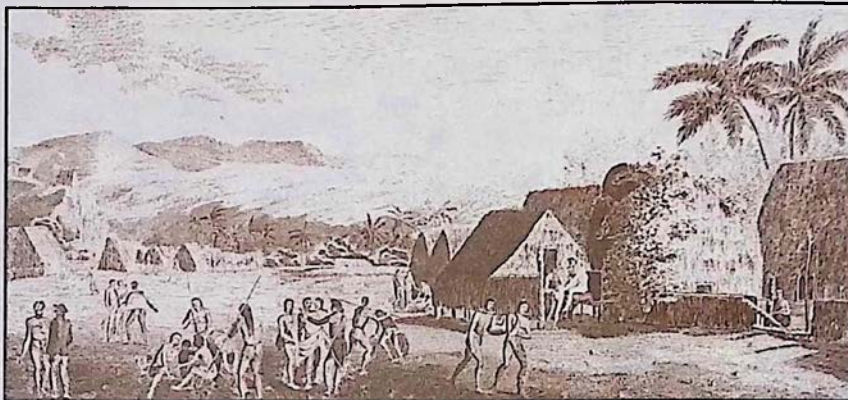
In the heat of the day the water looks inviting. It is so clear the bottom can be seen plainly. For some there might be a temptation to leap into the cool water, and climb back up the ladder. It looks inviting, but don't do it. A swift current runs along the shore. The flow will carry anyone in the water straight out to sea. It is called the Halaea Current, named for a chief who was carried off to his death.

One of South Point's most famous scenic spots is Mahana Beach, also called Green Sands Beach because it has a distinctive golden green color. Although none of the fragments in the sand are large enough for jewelry purposes, the beach is composed chiefly of peridot, a semiprecious gemstone.

These tiny green gems are a silicate, one of the many families of quartz, which cook out of the basaltic magma over time. (They are apparent as green flecks in the raw lava stones used to build the columns and walls of the Jagger Museum at Kilauea's Volcano National Park.) As lava reached the coast, erosional forces, and the specific gravity of the stones, perhaps are responsible for the accu-

mulation of such a large quantity of the granules that produced the green sand beach.

When looking at the severe landscape of the whole area it is hard to visualize what a delightful land it must have been about fifteen hundred years ago when people first lived there. They came to a lush land, but one with few food plants. Soon, in just a few seasons, the introduced food plants bloomed and produced their fruits. Over the centuries the land became one great garden. Hawaiians were not farmers, instead, they were the world's greatest gardeners. The soil was never tilled by beasts or machines, but always by hand. In the mild climate, there was no need for an extensive annual harvest. Only the food needed for the day was gathered from the garden. Intimate working with the land made Hawaiians expert in how to get the most from a given plot of soil. Today the small villages of Pahala and Naalehu exist near the sea in the southern district of Kau. The remote setting of these towns is supported by home cooked goodness and fresh



Early copper engraving of a Hawaiian village made from a drawing by John Webber, circa 1776-1780.

local fruit at the Naalehu Fruit Stand. Becky's Bed and Breakfast, an affordable option for lodging and Bougainvillea Bed and Breakfast with nights and breakfasts to remember offer visitors a couple of alternative and comfortable lodging opportunities in the area. Its quaint setting is still only thirty minutes to Volcano Village if you are moving around the island. Kau landing, the progressive local newspaper, focuses on the issues that affect the entire community of the Big Island can be found at numerous locations around the island. A subscription to Kau Landing allows visitors the opportunity to stay in touch with Big Island news. See their ad on page 29.

BECKY'S BED and BREAKFAST

Full Breakfast All You Can Eat
Southern Most Town in USA

Phone or Fax: (808) 929-9690 Off Island: 1-800-235-1233

Rooms Comfortable, affordable, with cable TV, private bath, queen or two double beds. Rates \$38 and up with full breakfast. Children welcome. Close to: Black and Green Sand Beaches. Swim with the Turtles, Golf courses or Volcano Park. Or after a long day on the Island just relax in our Whirlpool Spa and Star gaze. Location is the most southern town in the USA on Hwy. 11.

25% Off
on 4 day stay or longer

Bougainvillea Bed and Breakfast



Dusk at South Point's Bougainvillea B&B
"Nights and Breakfasts to Remember"

808-929-7089
1-800-688-1713

Details in our B&B listing
page 34



Southernmost point in U.S.A.

Naalehu Fruit Stand

"A stop in good taste"

Tropical Fruit Breads • Cookies • Pies • Giant Sub Sandwiches • Pizzas
• Garden Burgers • Hot Soups • Fresh Salads • Fresh Juices

Try Our Macadamia Nut Pie!

It's the perfect rest stop on the way to Volcano!
Sundry and Souvenir items available
Free souvenir with purchase
P.O. Box 31 Naalehu, HI 96722 (808) 929-9009



**Open Daily at 9 am
on Hwy 11**

"Hawaiian Lava Ballet"

Descending, so inexorably,
Toward the sea below,
Destroying nearly everything,
This pyrotechnic show
Incandescent molten rock,
Reminiscent of the sun,
Obliterating anything,
It Elects to overrun.

Mother Nature, transcendent artist,
Engineering the profound,
As she modifies her landscapes,
Spewing lava all around.
Nights that glow with flaming fountains,
Searing steam that fills the air.
Destroying all that man constructs,
A mighty force, beyond compare!

Like an artist with a canvas
She has painted on before,
With her passion, in her fashion,
She obscures it all once more.
Though observers may lament,
Precious treasures will be lost.
The end result may supplement,
Even more than what it cost.

There's a tidal pool, surrounded,
Lava flows around it's sides.
It's been cutoff from the ocean,
Now, it cannot greet the tides.
As it cools, the flowing lava
Forms a crystal silver crust.
The inevitable will happen.
The pool is warming, as it must.

Time, is quickly running out,
For life existing in the pool!
Soon, the pond will be too warm,
Before the lava flow can cool.
The scorching, blazing tropic sun
Helps guarantee the fate,
Of nearly every living thing,
That waits to leave, too late!

Frantic fish take to the air
As the pond absorbs the heat,
Flashing colors, everywhere!
With escape, no easy feat.
An impressive, large procession
Of A'ama crabs emerging.
Instincts shouting, "Leave this place!"
Are inspired by thermal urging.

Most pick the right direction
For travel to the sea.
Then, with bellies elevated
As high as they can be,
They start their tippy-toeing
Out across the hot terrain!
There's nothing now to save them.
They'll be steamed, if it should rain!

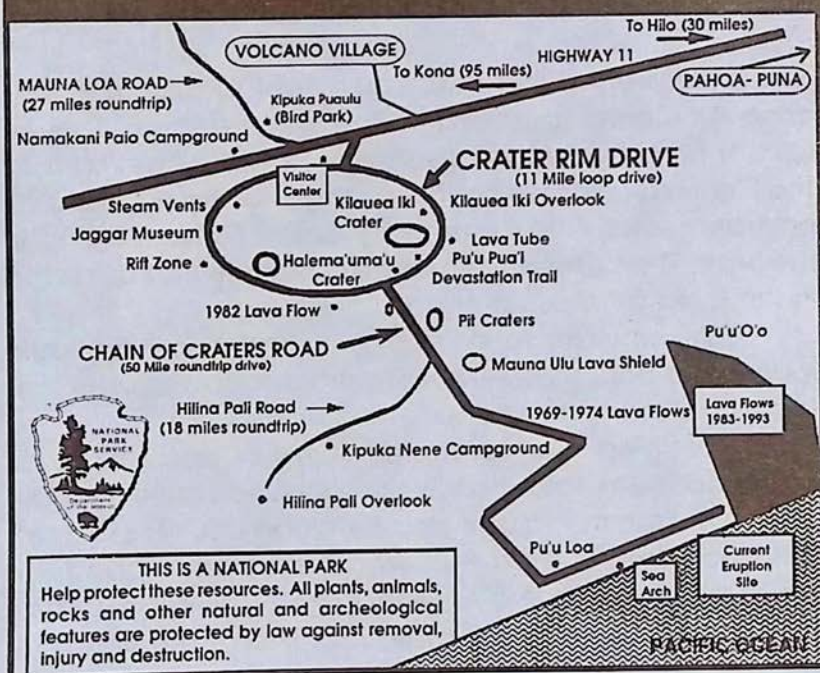
Speed becomes essential,
As they come to know distress,
And soon they all are running,
Tippy-toeing, nonetheless!
Their clicking sounds grow louder,
And the Crab Ballet, intense,
As their tiny, pointed toes
Dance across the lava fence.

Many make it to the ocean.
In the water, they'll survive,
Many others just can't take it!
Some expire, as they arrive.
Others run the wrong direction,
And are barbecued, instead.
Scattered out there, on the lava,
Colored red, and very dead.

Mother Nature's often rough,
On those living off the land.
Ask any black A'ama crabs,
Who have homes near new black sand.
They'll tell you life's explosive,
When hot lava hits the sea!
And frankly, any other place
is a better place to be!

by Howard M. Pierce 11 Jan. '95

Hawaii Volcanoes National Park and Village Information



Crater View inside Volcanoes National Park. Photo by Michael Stewart©, Molten Images.

Volcanoes National Park has one entrance, off Route 11, 30 miles south from Hilo or 95 miles east from Kona. The park is open 24 hours a day all year round and requires a \$5.00 entrance fee per vehicle which is valid for 7 consecutive days. The hiker/bicyclist/bus passenger fee for people over 16 and under 62 is \$3.00.

When you enter the park during daytime hours you will receive a park brochure at the entrance station. If you enter the park after hours you may pick up the brochure at the Kilauea Visitor Center which is located a quarter mile from the entrance on Crater Rim Drive. The

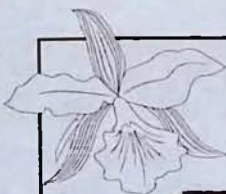
cont. on pg. 8

Twelve Romantic Rooms ~
Fabulous Fireside Dining Nightly 5:30 - 9:00 p.m.



...only minutes from Volcanoes National Park

VOLCANO VILLAGE ~ HAWAII ISLAND ~ (808) 967-7366



Akatsuka Orchid
GARDENS

FREE GARDEN TOUR

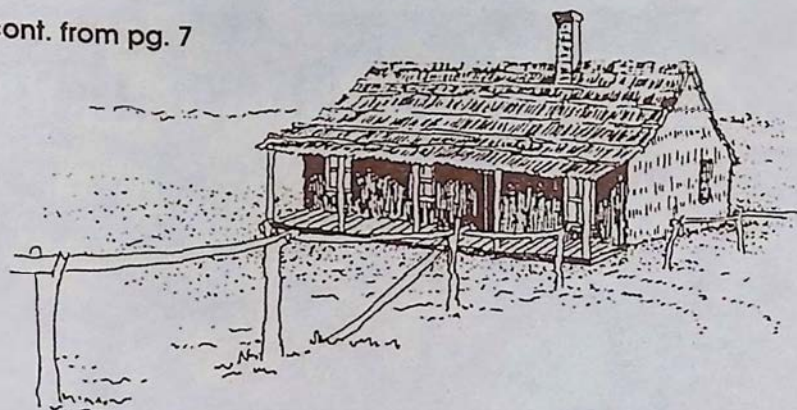
Wander in awe through our covered garden of exotic orchids and island plants then help your self to a FREE orchid blossom. We feature Certified Hawaiian orchid plants, cut flowers & anthuriums. Take them home or we'll ship them for you!

LOCATED ON HWY. 11

22 1/2 MILES FROM HILO

(808) 967-7660 P.O. Box 220, Volcano, HI 96785

cont. from pg. 7

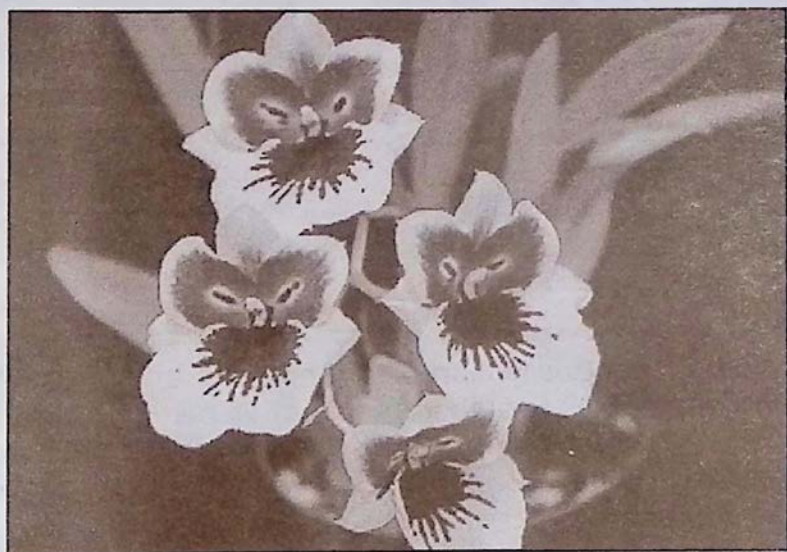


The Original Volcano House,

Now the Volcano Art Center at Volcanoes National Park.

visitor center is open from 7:45 a.m. to 5:00 p.m. daily.

Visitors are encouraged to take the time to carefully read the park regulations and guidelines. The volcano fumes that exist in the park may create a health hazard for pregnant women, infants and people with heart or respiratory problems. People at risk should avoid stopping at the Sulphur Banks, Halema'uma'u Crater and



Miltonia Orchids at exotic Akatsuka Orchid Garden!

other areas where volcanic fumes are present.

Overnight trips in the park require a backcountry permit that can be obtained at no charge at the Kilauea Visitor Center.

Once inside the park enjoy the 25-minute movie on eruptions shown hourly at the visitor's center. Other attractions are The Thomas A. Jaggar Museum three miles inside the park along Crater Rim Drive, The Volcano House, Thurston Lava Tube and scenic vistas. Depending on the timing of your visit you might have a chance to see the volcano erupting. A 45 minute drive to the end of Chain of Craters Road and a short hike will get you

to the most recent lava flow area. The new coastline is unstable and can collapse into the sea at anytime without warning. Obey all park signs. Do not enter any closed areas. The park also offers many other hiking opportunities which are mapped out in the park brochure.

Before leaving you won't want to miss The Volcano Art Center, adjacent to the visitor center. The Art Center hosts the works of some of Hawaii's finest artists. The Center is also responsible for many of the art, cultural, environmental, and community activities happening in the park. The dates and times of these activities are listed in the Coffee Times calendar.

A reminder to drive slowly and carefully while touring the park as it will help to protect Hawaii's endangered state bird, the nene.

Lodging, gas, camping supplies and dining all can be found in Volcano Village just a short drive from the park. When in the village stop by Wood Carver's Corner. This cozy shop is filled with wood arts from around the world including Native American and Hawaiian crafts.

Because of the remote location of the volcano,



Lorna and Albert Jeyte of Kilauea Lodge pictured in front of the dining room fireplace with original owners, Mr. & Mrs. Hiraki.

Aloha Volcano Vacation Rentals

Modest to Luxurious
Accommodations,
Romantic Hideaways
for Two or Homes with
Great Family Value.

(808) 967-7683
1-800-845-LAVA

VOLCANO ART CENTER GALLERY

The very best in island fine arts and crafts,
representing more Hawai'i artists than
any other gallery in the state.

FEBRUARY EXHIBIT: "Kilauea, Past & Present"
Photographs by Harry Jefferson

**Adjacent to Kilauea Visitor Center
in Hawaii Volcanoes National Park.
Open daily 9 a.m. to 5 p.m.**

Call 967-7511 for dates and times of
Hawaiian crafts demonstrations.

CARSON'S VOLCANO COTTAGE

Volcano's most private and inviting B&B



Experience The True Fantasy
Of Hawaii ~ Forested Garden
setting ~ Separate Guest
Rooms & Cottages ~ Hot Tub ~
Wood Burning Stove ~
Amenities Without The Price
(808) 967-7683
1-800-845-LAVA

the numerous Bed & Breakfasts existing in the region are a favorite choice among visitors staying in Volcano. A complete listing of Volcano B & B's can be seen on pages 34 & 35 of Coffee Times. A few particular favorites are My Island Bed and Breakfast, Carson's Volcano Cottages, Chalet Kilauea and Hale Ohia Cottages. If you are looking for seclusion, Carson's Volcano Cottages are tucked away in the region's rainforest and offers guests the most in privacy as well as a hot tub and even wood burning stoves to keep you warm on those cool volcano nights. Chalet Kilauea, The Inn at Volcano, features rooms decorated with art from around the world and even a treehouse suite, a unique alternative for couples looking for that romantic getaway. My Island Bed and Breakfast, located on a five acre botanical estate, is an 1886 missionary home offering guests the choice of rooms in either the main house or garden apartments. Located off of Hwy. 11 are the private Hale Ohia Cottages surrounded by bonsai-style gardens and moss covered grounds. The suites and cottages are both spacious and comfortably outfitted. Ohia Gardens

offers guests all the comforts of home with their own kitchen, lounge, TV etc. The two guest rooms are separate from the main house and have a shared bath.

Perhaps one of the most memorable dining experiences on the Big Island can be found at Kilauea Lodge, which features continental cuisine beside the historic fireplace of friendship. The mountain lodge also hosts

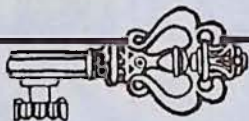
twelve romantic rooms for overnight visitors. One spectacular stop you do not want to miss when you are in the volcano region is Akatsuka Orchid Garden. Seeing is believing when you arrive at this exotic and tropical garden. Visitors are welcome to free tours and complimentary orchids during their visit.

For Park Information Call: (808) 967-7311 or For Eruption Update Call: (808) 967-7977



A NIGHT SCENE IN THE CRATER OF THE VOLCANO OF KILAUEA, HAWAII. Print from Isabella Bird's Six Months in the Sandwich Islands, 1876.

No Booking Fee



967-7244

Volcano Reservations

SELECT STATE WIDE ACCOMMODATIONS

Bed & Breakfasts ~ Cottages ~ Vacation Homes ~ Condos

Your Key To Hospitality

BUDGET TO LUXURY ~ GREAT VALUE

Chalet Kilauea - The Inn at Volcano



EXPLORE TREASURES FROM AROUND THE WORLD

Unique Theme Rooms ~ TreeHouse Suite ~ Vacation Homes

Jacuzzi ~ Fireplace ~ Library ~ Garden

Gourmet Breakfasts

967-7786

Afternoon Tea

HALE OHIA COTTAGES

RETREAT, RELAX,
RELIVE HAWAII

Volcano, Hawai'i • (808) 967-7986



Woodcarvers Corner

A Showcase of
Hawaiian, Modern and,
Native American Art
Jim and Chris McLuckie, Owners

Wir bedienen auch gern in deutscher Sprache



(808) 985-8518

Historic Main St. Pahoa-Puna, Hawaii Quaint Shops, Local Food, Arts, Crafts, Theater

For visitors who want to experience the true feeling of old Hawaii, Pahoa village holds the key to this untouched past. First a rugged sawmill town then a sugar town and later a crossroad on the old railroad, Main Street Pahoa has maintained its western style storefronts and wood boardwalks in a charming turn of the century Victorian style.

Quaint shops from surf, to curio and restaurants span the flavors of the globe from Thailand, to Mexico, and Italy, making Pahoa Village one of the most pleasurable and tasteful stops on the Big Island.

Call ahead to any of the friendly shops to see if there are any special events scheduled during your visit. Pahoa has the reputation of holding some lively and entertaining performances both on its Main Street and at the Akebono Theater, Hawaii's oldest theater.

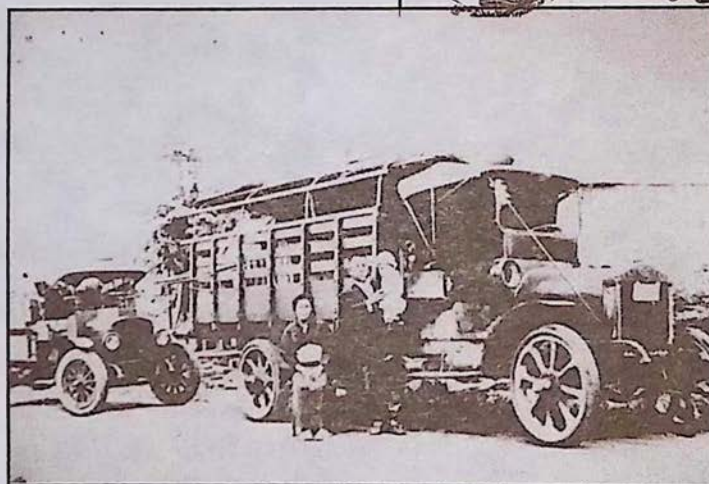
Naung Mai

Thai Kitchen

"We serve Cheng Mai,
Bangkok & Phuket style cuisine."
Vegetarian Entrees offered

Mon. - Fri. 3 - 8:30pm
Sat. & Sun. 12 - 8:30pm

965-8186



Japanese family arriving in Pahoa probably to work in the early Puna sugar industry. photo courtesy of the citizens of Pahoa, circa 1920



Drawing of Historic Downtown Pahoa Village by artist Patricia Borton

also available for those visitors looking to spend the night.

The countryside surrounding Pahoa is filled with natural wonders like the Lava Tree State Park, steam vents, groves of papaya trees and black sand beaches along the rugged Puna coast. Visitors are warned however that a prolonged stay in this Aloha time capsule may make leaving a very difficult task.



The Godmother 965-0055

Breakfast: 8-11am, Lunch:
11am-3pm, Dinner: 5-Closing

EVERYTHING HOMEMADE

Delicious authentic
New York-style Italian cuisine
Located in historic Pahoa Village

THE VILLAGE INN

HISTORIC PAHOA
BUILT IN 1910
P.O. BOX 1987 • PAHOA HAWAII 96778
(808) 965-6444

LODGING & HAWAIIANA
CURIO SHOP

\$39.95 double & up



huna ohana
METAPHYSICAL BOOKS
& ESPRESSO CAFE

VEGETARIAN FOOD
Open 8am - 5:30pm

Muffins, croissants, salads, sandwiches,
& 100% organic Kona Coffee.
P.O. Box 536, Pahoa, HI 96778
(808) 965-9661

LUQUIN'S

MEXICAN RESTAURANT
Chili Relleno, Carnitas,
Tamales & Taquitos

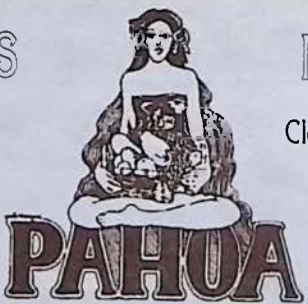
FREE CHIPS & SALSA
with Dinner

OPEN DAILY
11 a.m. to 9 p.m.
965-9990

NATURAL GROCERIES

Puna's Organic Connection
Produce, Coffee, Grains, Beans & Nuts
Gourmet Deli and Bakery
Hours 9-9 Mon-Sat, 9-6 Sun

965-8322



PAHOA

Located in the Heart of Historic Pahoa

NATURAL EMPORIUM

Clothing and Jewelry from Around the World
Creations by Local Artists
Toys • Cards • Gifts
Hours 10-6 Daily

965-6634



HAWAIIAN

HEMP FASHIONS
CLOTHING
FOOD
PAPER
LITERATURE
& ART

(808) 965-8600
Pahoa Village

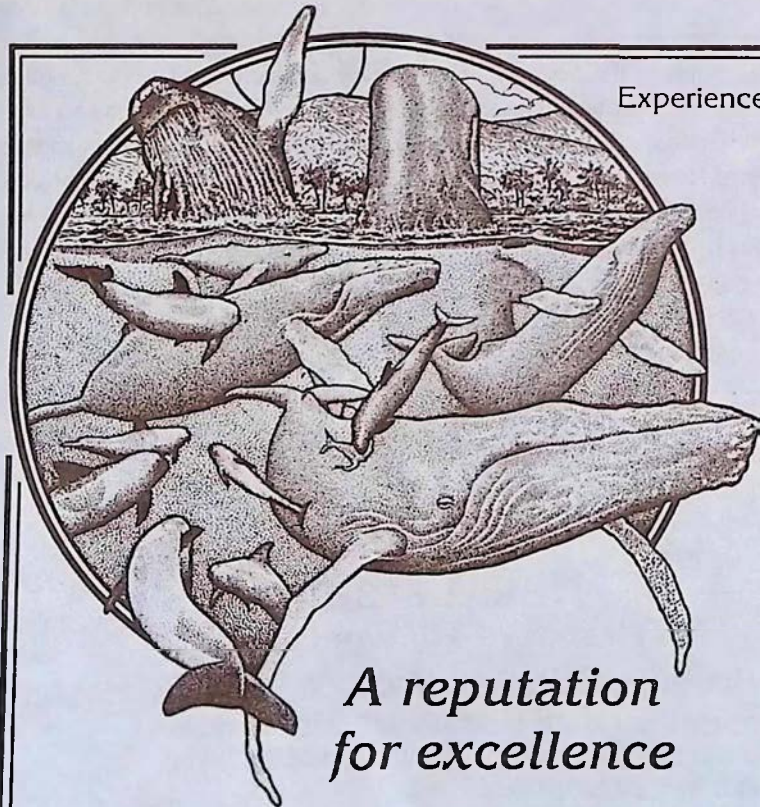
Send \$2

For our catalog of products
P.O. Box 2056, Pahoa, HI 96778

Whales of Plenty in the Waters of Kona, Hawaii



Upper Left: A curious male pilot whale "spy hops." **Lower Left:** Spinner dolphins leaping gracefully. **Center:** Hawaii's most famous winter visitor, the humpback whale. **Lower Right:** A giant sperm whale "spy hopping" off the Kona coast. **Upper Right:** The acrobatic breaching of two humpback whales off the Kona coast. All photos by Dan McSweeney©.



*A reputation
for excellence*

3 Hour Daily Cruises
Special Family & Kamaaina Rates

HELP PROTECT THE WHALES.
Proceeds benefit whale conservation.

Experience is the difference between Whale Glimpsing and Whale Watching!

**Kona's Only Guaranteed
Year-Round**

Whale Watch

With Capt. Dan McSweeney

Experience the whales with a devoted professional researcher/guide who has spent the past 20 years and over 30,000 hours around Hawaii's whales.

Call for information & reservations:

322-0028



EAST HAWAII AND HISTORIC HILO

When you talk about the old Hawaii, at least the one that hasn't been touched as much today by the long arms of commercialization and development, you cannot help but to mention the East Coast on the Big Island. At the center of all this is old town Hilo, seeing a revitalization of spirit thanks to the effort of the Downtown Hilo Organization is busy restoring and preserving the storefronts of this yesterday town. Aiding this effort are the wealth of new businesses occupying Hilo's old buildings.

One of the brightest spots has been the renovation and remodeling of the S. Hata Building by **Cafe Pesto**. This restaurant has maintained the building's Renaissance Revival style of architecture and filled the air with smells of wood oven baked pizza and Pacific Rim Italian cuisine.

To add to this old Hawaii feeling are the daily Suisan Fish Market Auction and the Hilo Farmer's Market which is held every Wednesday and Saturday in Downtown Hilo.

Outside the town to the north are the Hawaii Tropical Botanical Garden, located along a 4 mile coastal scenic route, and Akaka Falls with its self guided path-

ways that take visitors over ravines and past several other waterfalls before ending up at the grand daddy of them all, Akaka.

When you are done sight seeing, lodging in Hilo is a snap and can accommodate every type of visitor. The magnificent and luxurious **Hale Kai**

Bed and Breakfast on the bluff above the ocean overlooks Hilo's premier surf spot, Honolii. Expect nothing less than gourmet breakfasts and plenty of privacy. Hale Kai also has available a private cottage facing a pool and ocean. If you are looking to stay within walking distance to downtown Hilo stop in at the affordable **Wild Ginger Inn** which features a jungle garden and stream setting overlooking Hilo Bay. If a stay in the Hawaiian countryside is what you are seeking, head seven miles north out of town to Papaikou and check in at **Hale Lamalani** vacation rentals. Situated at 1,000 feet above sea level this country retreat offers plantation style lodging with all the serenity one could ever desire.

After leaving Hilo you don't want to miss the drive north to Waipio

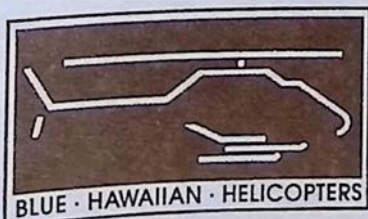
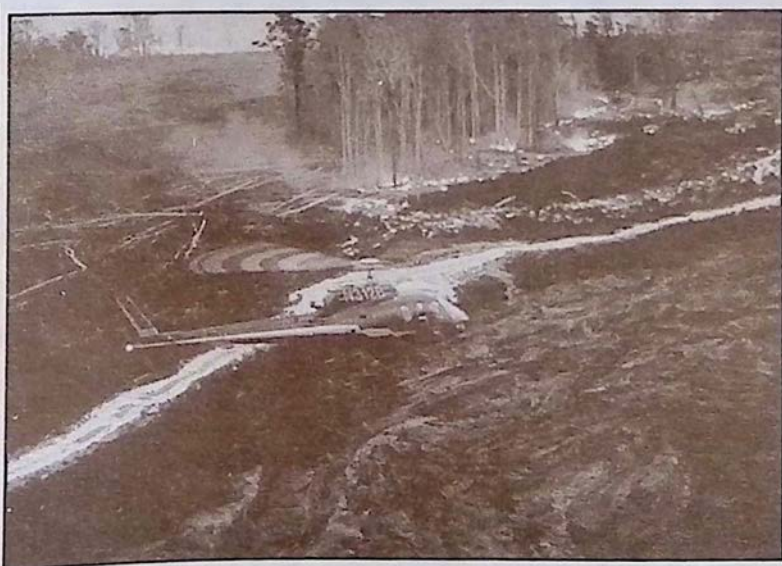
Valley which takes you over scenic gorges that were once crossed by cane hauling trains in the hey day of sugar cane production. The plummeting waterfalls and river mouths under the extensive bridge systems leading north up the Hilo Coast are definitely an awesome sight. Akaka Falls State Park and the village of Honamu can be reached by taking Hwy. 220 off of the main route, Hwy. 19 north. See the map. Once you reach the Park a short paved hike will trail you past a network of smaller waterfalls, lush and colorful tropical foliage to the plummeting Akaka Falls. Its accessibility and grand size make Akaka Falls a popular stop along this eastern coast.

Blue Hawaiian Helicopters, located at the Hilo International Airport, can take you for an air adventure you are not soon to forget. Whether you fly over magnificent waterfalls, or soar over an active volcano Blue Hawaiian is certain to take you places few would dare venture to on foot. The tour also includes a free personal video tape of your flight. For reservations see their ad below.



*Print by Dumont Durville of Hilo's
Waiakea village. Circa 1830*

We'll take you places
where your feet can't go!



ON THE BIG ISLAND:
961-5600
IN MAUI:
1-800-745-BLUE (2583)

Hale Lamalani

(House of Heavenly Light)

A Hawaiian Hideaway, Vacation Rental & Hostel
Serenely situated with Inspirational Ocean, Mountain,
Hilo Bay and Volcano Views from \$15 to \$55/Night!
With Breakfast Fixings

Located 5 miles north of
Hilo above Botanical Gar-
den and before Akaka
Falls at the gateway to
Hamakua.



Phone/Fax: (808) 964-5401, Outside Hawaii 1-800-238-8BED
R.R. 1 Box 206, Papaikou, HI 96781

HISTORIC HILO

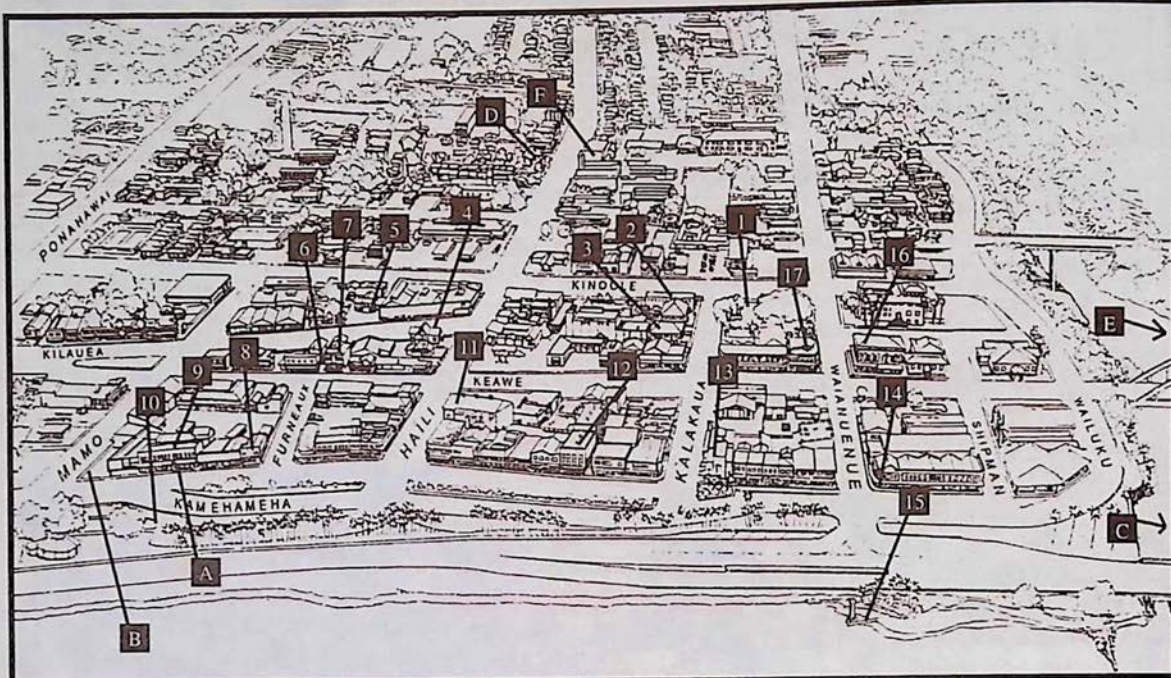
Historical information and map provided by the Downtown Hilo Organization whose interests involve the preservation of Old Hilo, Hawaii.

This self-guided walking tour of historic Downtown Hilo will take about one hour if walked continuously. However, you are encouraged to go at your own pace and spend additional time discovering and exploring that which interests you.

The seventeen stops along the way will provide you with information about the town from 1870 to the present. The history of Hilo begins much earlier, however, with the arrival of the Polynesians in 1100 A.D. They eventually inhabited the shores of Hilo Bay, farmed their crops, fished and traded their goods with each other along the Wailuku River. Changes came to this life-style upon the arrival of missionaries who brought with them new ideas, education and Christianity.

Hilo became a stopping place for explorers curious about the active volcanoes, whaling ships and traders. By the 1900's a number of wharves had been constructed, the breakwater was begun and the railroad connected Hilo with other parts of the island. Hilo became the center of commerce. Two destructive tsunamis, in 1946 and 1960, caused a shift in the location of Hilo's government and commercial life.

Today, historic Downtown Hilo is alive and bustling with renewed energy. New and old businesses alike are meeting the challenge of revitalizing our city center while preserving the historic character which remains very special.



Historic Structures

1. Kalakaua Park
2. Old Police Station
3. Hawaiian Telephone
4. Central Christian Church
5. Taishoji Soto Mission
6. Furneaux Lane
7. Ancient Order of Foresters Building
8. Furneaux Building
9. S. Hata Building
10. Bayfront
11. Palace Theatre
12. S.H. Kress Company Building
13. First Hawaiian Bank Building
14. Koehnen's Building
15. Landing Wharf
16. First Trust Building
17. Pacific Building

Dining, Lodging and Other Sights...

- A. Cafe Pesto (*Pacific Rim Cuisine*)
- B. Hilo Farmer's Market
- C. Hale Kai B&B
- D. Haili House Inn
- E. Wild Ginger Inn
- F. Lyman Museum



whether you choose...

WOOD-FIRED PIZZAS, FINE PASTAS
OR
SCRUMPTIOUS DESSERTS
you will always get...

AN ADVENTURE IN TASTE

CAFE

Pesto

HILO BAY

OPEN FOR LUNCH & DINNER
Historic S. Hata Bldg., Hilo Bay, 969-6640
Live Hawaiian Music on Sundays, 6pm - Closing

Hale Kai
Bed & Breakfast

Private Cottage also available

Bjornen

★★★★

A 4 Star Bed & Breakfast on the bluff facing the ocean and overlooking Hilo Bay and Honolii surfing beach

VERY PRIVATE, POOL, HOT TUB, BREAKFAST,
Kona Coffee, Private Baths, Well Decorated Rooms

111 Honolii Pali, Hilo, HI 96720

(808) 935-6330 Fax 935-8439

Double occupancy is \$80 and up

1940's Plantation style B & B with jungle garden & stream. A nonsmoking Inn.

Wild Ginger Inn

\$39 private bath double with breakfast.
100 Puueo St.
Hilo, HI 96720
Call 808-935-5556

BED & BREAKFAST

NO FRILLS SPECIAL: 7 days for \$150

HONOKAA

CURIO

TRADITION

SIMPLICITY

SINCERITY

For years the town of Honokaa sat idle, its home town theater empty, local storefronts ghostly quiet, and streets void of the bustle that once rumbled down Mamane Street during the boom days of the Hamakua Sugar Company, an industry that for the last century has been the life blood of the people in this region. Since the decreasing activity of sugar production over the years and the



Wood artisan, Greg Osowiecki, started the construction of Mamane Street Bakery's new Hawaiiana Gift Shop by hand selecting local trees to mill. The shop's decor is a unique blend of tropical wood designs.

recent decision this year to halt sugar production all together, the local citizens of Honokaa have re-directed their energy and begun one of Hawaii's most spirited movements of rejuvenation. Local merchants have taken the initiative to reopen some of the closed doors in this picturesque town, including the local ice cream parlor, now called **Simply Natural**, outfitted with an old fashioned soda fountain and spinning

stools. Other shops such as the **Honokaa Marketplace Inc.** as well as many curio shops overflow with Hawaiian memorabilia, local crafts, and wearable arts. Home town cooking at **Mateo's Pizza**, **Jolene's Kau Kau Korner**, and **Mamane Street Bakery** adds to the distinctly local flavor of what Mateo's Pizza owner, Alex Mateo, proudly calls, "The New Honokaa". Included in this

new Honokaa is the town's farmers market that has become a weekly event in the downtown area in front of the Historic Botelho Building. The market is open each Saturday of the month.

As Hawaii's old theaters are becoming more and more popular the citizens of Honokaa celebrated the reopening of their own **People's Theater**. The doors have officially been opened and evening feature films can be caught every Friday, Saturday and Sunday evening at Honokaa's historic theater. Also located in Honokaa is the **Bad Ass Hawaiian Macadamia Nut Plantation** which is located down the hill from Kau Kau Korner. The plantation allows visitors the opportunity to view the inner workings of a macadamia nut factory. Factory creations fill the store shelves and will undoubtedly make your taste buds dance when you try them. Also featured is the plantation's own bake shop as well as a complete line of Bad Ass Coffee.

Legend has it that it was in Waipio Valley, "the land of the falling water", the great King Kamehameha, as a young boy, received his leadership training and first learned to surf. Today, family ohanas, "houses", still dot the landscape which is separated by a river that leads into the open sea. Local



Mamane Street Bakery adds local flavor and a shop of distinction to the positive growth of small businesses in Honokaa.

Open Daily
in Honokaa



Banana Taro
Pancakes
Fresh Deli
Sandwiches
Old Fashion
Ice Cream Sodas
Soups of the Day
Hilo Homemade
Ice Cream
Even Taro
Ice Cream

See our coupon for a
FREE ice cream cone

Now Serving Breakfast

775-0119

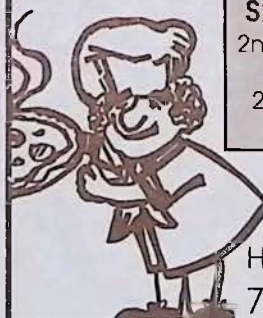
Historic People's Theater

Now Showing
Feature Films
Every Friday
& Saturday

Mamane Street,
Downtown Honokaa
775-0000

Mateo's PIZZA

Open Daily at 11 a.m.



Spaghetti
Salads
Veggie Pizza

SPECIALS
2nd Medium
\$7.00
2nd Large
\$9

HONOKAA
775-0944



Located in
Honokaa

Open
Mon - Sat
10 am - 8 pm

Serving the Island's Favorite
Local and American Dishes

What better place to share
a little something with the
community and travelers
from afar.

dine in 775-9498 take out



Visitor
& Local Information

(Farmers & Cultural Market Saturday)

Country Goodness Honokaa!

ARTS · CRAFTS · FLOWERS
(coop store daily)

Historical Photos/Heritage

775-9239



HONOKAA MARKETPLACE INC. "The Mary Guava Shop"

Second hand Furniture •
Antiques • Collectibles •
Clothing • Craft Classes

775-8255

P.O. Box 1813
Honokaa, HI 96727

MAMANE STREET BAKERY

• Café •



RETAIL/WHOLESALE
open daily

MORE THAN JUST A BAKE SHOP

A must see on your vacation!!!

Located in downtown Honokaa our gourmet bake shop has just expanded to include a unique Hawaiiana Room constructed out of local woods.

A NEW HAWAIIANA GIFT SHOP

Surrounded in a tropical wood decor we offer the finest Kona Coffee, pottery, prints, cards and paintings by local artists. Browse or relax in our cafe dining area while you enjoy such treats as espresso, cappuccino, croissants, cookies and other desserts.

(808) 775-9478

HAMAKUA

SUGAR NUTS WATERFALLS TRANQUILITY

farmers and their families continue to make their way of life from farming taro and fishing off the sandy shores of this peaceful and remote valley floor.

Outside of Waipio Valley and Honokaa town are other early and small settlements of the Hamakua region such as Paauilo, Kukuihaele and Laupahoehoe all filled with a rich and local culture that happily survives in this region of the Big Island. A couple of popular overnight accommodations in the area are Waipio Wayside Bed & Breakfast Inn and Waipio Ridge vacation rentals. The only bed and breakfast in the area **Waipio Wayside B&B Inn** offers 5 relaxing bedrooms that have been renovated and decorated to preserve the character of old Hawaii. The master bedroom is very private and set back from the house (perfect for a romantic getaway). Enjoy the interaction of a traditional bed and breakfast while relaxing in a historic 1938 plantation home. Swing in the large double hammocks on the expansive deck or watch a sunset from the gazebo. After hiking soak in the old 6 foot bath tub filled with an array of aromatherapy products. At check-in sip one of 20 flavors of tea brought to you by The Republic of Tea. Or experience our amazing Hamakua coast coffee. Your host Jacqueline Horne is an expert on hiking trails and a great source of information on the Island. See add on last page and browse through the Hawaiian Island B&B Association pages. **Waipio Ridge Vacation Rental** lies perched on cliffs above scenic Waipio Valley and hosts magnificent



Waipio Valley in Hamakua was once populated by ancient Hawaiians who farmed extensive fields of taro. Families living in the valley today still cultivate the taro plant which is made into poi. Poi remains a staple in many modern day diets and is quite good when used with other local products. Honey, sugar, coconut and poi baked in an imu or oven is the favorite of Coffee Times. Ask any Hamakua local for the details of preparation, most love to share the secrets of good poi making. Print by Doms, circa 1785.

valley views. See their ad below. New doors will continue to open for all of Hamakua as a period of change sweeps through the land with the fall of the sugar empire and the rise of small businesses in Honokaa.

HONOKAA-HAMAKUA FARMERS AND CULTURAL MARKET

Market held every Saturday beginning at 8:30am in front of the historic Botelho Building on Mamane Street in downtown Honokaa. Call Hal Hisa Yamato at 775-9239 for more information.

First Anniversary Celebration, February 18th at 9am

The celebration will feature live entertainment by the Honokaa High School Band, Bob Yurth, Uncle J. Batalona, Alfred Wilson, Eddie Ku. Refreshments will be served, and games will be provided for the children. According to Hal Yamato, market coordinator, the market is all about the Hamakua heritage and environment and is very different from the usual images of Hawaii that portray only sunny beaches. And, the region hosts an awesome, beautiful, rugged coastline of pounding surf, sweeping views of the blue Pacific and magnificent Mauna Kea, multi-vegetated gulches, a moderate pleasing climate, and quaint villages of common, multi cultural, neighborly people. The only thing that has changed is that the sugar industry is gone and the community is finding new ways to exhibit its qualities through the open market and new town shops.

HAWAIIAN MACADAMIA NUT PLANTATION

Home of the Bad Ass Macadamia Nut Co. of Honokaa

Visit our Factory and Store in Honokaa for delicious macadamia nut creations - from freshly-roasted nuts surrounded by creamy chocolate, to macadamia nuts and coconut combined in a fantastic butter brittle. And of course we carry a full inventory of our Bad Ass Kona Coffee products.



FACTORY TOURS

LOCATED IN HONOKAA
TOWN, THE HEART OF
HAMAKUA
775-7743

Captain Cook's First Three Days in Hawaii

After spending the last few months bashing the corporate Kona coffee counterfeiters and the rampant and undesirable mele of mass marketers moving in on our peaceful island of Hawaii we thought it best to turn the subject of articles this month towards old Hawaii once again. And what better historical matter for a story than delving once again into the personal journal of Captain James Cook and reliving Western man's first four days in these Hawaiian islands. It was 216 years ago this month Cook met his fate in Kealahou Bay on the Big Island in a skirmish between his soldiers and Hawaiians. Nearly one year before his untimely death Cook first discovered Hawaii by sailing upon the island of Kauai while taking winter refuge in the South Pacific during his search for a Northwest passage. Cook writes:

On the 2nd day of January, at day break, we weighed anchor, and resumed our course to the North; having fine weather, and a gentle breeze at East, and East South East, till we got into the latitude of 7°, 45' North, and the longitude of 205° East, where we had one calm day. This was succeeded by a North East by East, and East North East wind. At first it blew faint, but freshened as we advanced to the North. We

continued to see birds every day, of the sorts last mentioned; sometimes in greater numbers than others; and between the latitude of 10° and 11°, we saw several turtles. All these are looked upon as signs of the vicinity of land. However, we discovered none till daybreak, in the morning of the 18th, when an island made its appearance, bearing North East by East; and soon after, we saw more land bearing North, and entirely detached from the former. Both had the appearance of being high land. At noon, the first bore North East by East, half East, by estimation about eight or nine leagues distant; and an elevated hill, near the East end of the other, bore North, half West. Our latitude, at this time, was 21° 12', North; and longitude 200° 41', East. We had now light airs and calms, by turns; so that, at sunset, we were not less than nine or ten leagues from the nearest land.

On the 19th, at sunrise, the island first seen, bore East, several leagues distant. This being directly to windward, which prevented our getting near it, I stood for the other, which we could reach; and, not long after, discovered a third island in the direction of West North West,

continued on page 22

BIG ISLAND TATTOO

25 Years Experience • State Licensed
Approved by the Health Dept. of Hawaii

Specializing in Tattooing

Traditional, Polynesian, Japanese, Fine Line Portraits, Custom Coverups

808 329-7384

By Appointment Only, In the Old Industrial Next to Salvation Army
Kailua-Kona, Hawaii
If We Can't Do It, It Can't Be Done



ENHANCE YOUR VACATION BY OPENING YOUR MIND

HAWAII'S OWN RETURN

Kama'ainas Rev. Linda Waldron & Rev. Leroy Montana

New York City's Finest Psychic Readers Return to Hawaii

- Readers to Oscar & Tony Winners, Financiers, Authors, Artists
- Authors of The Crystal Oracle & The Children's Handbook of Real Magic
- Guests on talk shows, radio broadcasts & 2 Emmy Award Winning Television Shows
- International Lecturers
- Creators & Directors of The Intuitive Training Institute

- Members of the National Association of Spiritual Healers
- Interfaith ministers performing ceremonies of all types worldwide
- Subjects of articles in Vogue, Self, Interview & New Women Magazine

10% OFF when you mention this AD.

For Appointments, telephone readings & personal consultations call **885-8355** or **334-3434** (voice mail)

HAWAII'S HOTTEST NEW MUSIC VIDEO!

HANG IN' WITH BOSCO!

A GUARANTEED "HAWAIIAN CLASSIC" FOR RESIDENTS & VISITORS ALIKE!

... BY LAND, SEA, AND AIR ...

BOSCO DELIVERS A UNIQUE, ONE-OF-A-KIND MUSICAL VIDEO CRUISE, AROUND THE SPECTACULAR ISLAND OF HAWAII!

~ BOSCO STYLE ~

GREAT GIFT IDEA!

MUSIC, COMEDY, AND AWESOME BEAUTY!

FOR FAMILY FUN! ... THIS VIDEO HAS IT ALL!! AVAILABLE IN 50 LOCATIONS ISLAND-WIDE

OTHER ISLANDS, AND MAINLAND ORDERS

WE SHIP FREE!

BOSCONOVA PRODUCTIONS
P.O. Box 243, Hialeah, HI 96728
1-800-63-BOSCO (522-6604)

LANAKILA

VENTURES, INC. 987-3999

Kona's uncrowded 60' trimaran sailing yacht

"We offer an alternative to the crowded tourist boats."

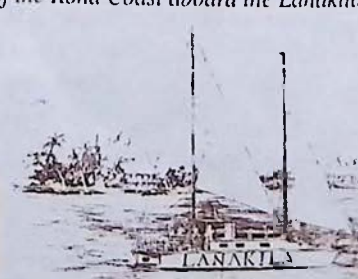
\$10 OFF per adult couple on Snorkel - Whale Watch

(direct booking)

SAILING • SNORKELING

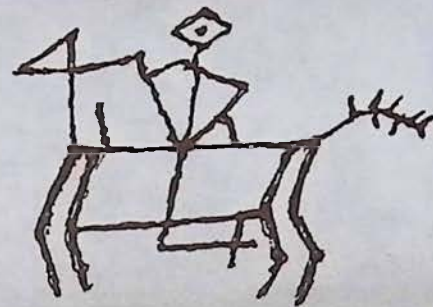
Sunsets & Whale Watching

Experience the blue water adventures of the Kona Coast aboard the Lanakila.



Waimea Country

Snow Capped Mountains and the Wild West Hawaiian Style



Lone snowboarder ascending snow capped Mauna Kea. Photo by Michael Stewart© Molten Images.

Princess Kaiulani

FASHIONS

Owned and Operated by a Local "Big Island" Gal

Phone: 885-2177

Located in
Waimea Center

Featuring:

Miss Elaine, Marilyn Miglin's world famous scent
"Phermone," Christian Dior, Princess Kaiulani Muu'muus,
Carol Anderson, Karen Kane, Adele Joyce, Crazy Horse

**SPRING FASHIONS ARRIVING
IN MID FEBRUARY**

A Boutique adorned with antiques with a Victorian flare offers

Fashions designed and manufactured in Hawaii

Traditional Hawaiian Holokus for weddings or other special occasions

Ladies Lingerie, Sportswear, Sweaters, Bridal Gowns, Formals.

(Alterations arrangements offered to ensure a custom fit)

We also offer Jewelry, including a 24K Hawaiian coin which features
Princess Kaiulani herself, available in earrings, pendants, rings and bracelets.

Stop in and see our many wonderful gift items. Open 7 days a week.



Discover the Best of Hawaii AT COOK'S DISCOVERIES

Open daily 10 a.m. to 6 p.m.

In Historic Spencer House circa 1850 - Waimea Center Next to McDonalds (Hwy 19)

(808) 885-3633

Discover proudly made in Hawai'i treasures including koa, sandalwood, coconut, mango & avocado boxes and bowls. Hawaiian books and language tapes. Hawaiian music and hula implements. Hawaiian quilts, collectibles and authentic reproductions of ancient palaoa, tapa beaters, fish hooks, squid lures. Island wear by Nike'u, Sig Zane and Island Cowboy. Woven lauhala. Feather, Ni'ihau, wiliwili, kukui and puakenikeni leis. Custom sterling jewelry by former Cartier goldsmith and Mings. Originals and prints by distinguished Island artists including Herb Kane, Harry Wishard, Kathy Long and Doug Po'olua Tolentino. Pure Organic Kona coffee, triple chocolate chunk cookies, fresh Waipi'o poi and poi cake, lemon-macadamia and guava-rum truffles. Even Poi Dog Biscuits! Many goodies under \$15! Remember... Buy Hawaii.





"Beans, Beans and More Beans at Waimea Coffee & Co."

Between snow capped Mauna Kea and the Kohala mountains the green hillsides of North Kohala roll along under wispy white clouds, and afternoon rainbows frequently stream their way from the skies above Waimea. Inside this landscape herds of grazing cattle can be seen meandering their way through sloping pastures filled with cactus and dry underbrush as Hawaiian cowboys called paniolos still ride horseback and work the ranges.

Ranching began in this region of the Big Island after

King Kamehameha appointed, in 1815, a young seaman named John Parker to hunt and shoot the herds of wild cattle whose population had grown uncontrollably since their introduction to Hawaii in 1793. Parker, who accomplished his mission, managed to domesticate a herd of his own before marrying a Hawaiian chiefess. The marriage helped Parker to acquire the land that would later be used to found his 250,000 acre ranch in 1847. Today's existence of Parker Ranch as one of the largest ranches in the United States gives the outsider an idea of the magnitude of its size.

Today, the town of Kamuela, more often referred to after its district name Waimea, is a town that still surrounds itself with a ranching lifestyle. The brightly colored Victorian houses and shops, tidy yards filled with flowers and skeleton remains of wagons and wheels gives visitors the opportunity to see yet another sphere of the diversity of cultures that exist in Hawaii. Beginning a tour of Kamuela with a cup of coffee and a bite to eat at **The Waimea Coffee and Company**. The coffee shop boasts the largest selection of gourmet coffees from around the world as well as a healthy selection of lunch items that includes a daily soup, quiches, croissants, pastries and a gourmet groceries pantry. The shop is nestled inside Parker Square beside Waimea General Store. Contributing to the ambi-

Upcountry Connection

Gallery of Art & Antiques

NOW LOCATED

at Mauna Kea Center

(Across from the banks at the light in Waimea)

Open Mon.-Sat. 10am to 6pm ~ 885-0623

We've Moved!

**Come by and Visit our Expanded Showroom,
Full of the Finest Hawaiiana, Paniolo Artwork ~
Koa Furniture ~ Antiques and Accent Pieces.**

Lark Dimond Cates
Bronzes



Marushka Jewelry



Dan Cunningham Bowls



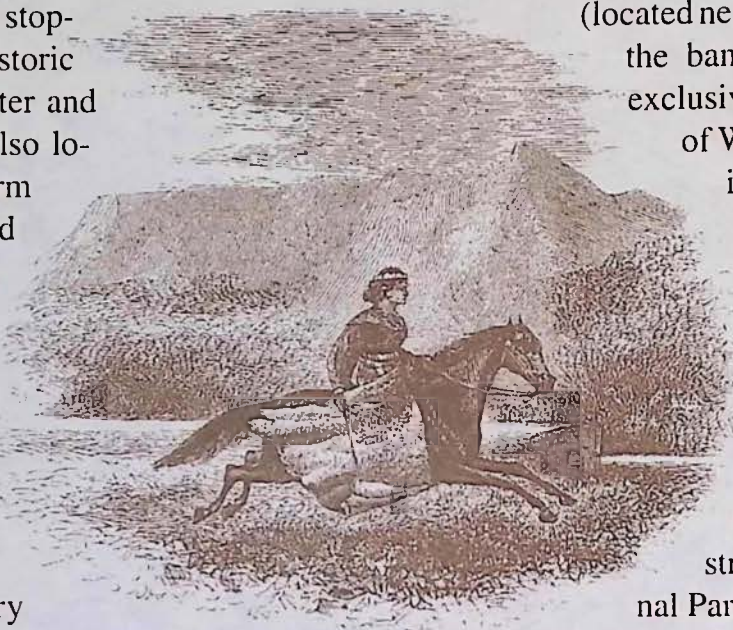
Chuck DeHaan Prints

Herb Kane
Paintings



ance of Parker Square is **Bentleys**, which s always revolving its inventory to keep the character of the shop fresh. Cookbooks and kitchenware including stemware and fine dishware are just a few of the items the home lover will find at Bentelys.

Make sure you don't miss stopping at **Cook's Discoveries** in Historic Spencer House at Waimea Center and **Princess Kaiulani Fashions**, also located at Waimea Center. The warm aloha of a 150-year-old restored home creates a unique setting for Cook's Discoveries' one-of-a-kind collection of treasures made in Hawaii by Hawaii's proud people. Look for the Hawaiian flags across from the Waimea McDonalds. Princess Kailulani Fashions, owned and operated by Terry Paiva-Steckling, is a shop filled with local fashions for women. The boutique offers traditional clothing designs for women of all sizes that even includes services for alterations and custom fits. Besides the local garment line, Princess Kaiulani offers jewelry, and other



gift items. Few shops in Hawaii offer designer clothing also manufactured in Hawaii. And price and value make the shop a popular shopping destination when traveling in Waimea.

The marushka hand-beaded jewelry is a must see at **Upcountry Connection**, located at Mauna Kea Center

(located next to Waimea Center and across from the banks at the light in Waimea). This exclusive gallery is often the spot for some of Waimea's most spectacular art showings that feature the works of both local and visting artists. Wood works by Tai Lake, Lark Dimond Cates bronzes, Herb Kane paintings, and exotic bowls by Dan Cunningham are only a few of the featured works at Upcountry. The gallery has also designed a paniolo room into its interior setting. A Reconstructed wood wall taken from the original Parker Ranch stable surrounds the corner of the gallery fronting antiques from the local ranching culture and art depicting paniolo life.

Woman wearing a pa'u (popular Hawaiian skirt of elegant design used for horseback riding during the 1800's). Print from Isabella Bird's Six Months in the Sandwich Islands.

Shops of distinction.

PARKER SQUARE

apart from the rest!

CAFÉ

MARKET



"For a Welcome Break in Your Day"

Espresso, gourmet coffees and fine teas

Iced coffees, teas & juices

Pastries and desserts

Homemade soups and salads

Unique Tee-shirts, mugs and gourmet coffees

Outdoor seating on the courtyard lanai at Parker Square

We mail-order anywhere!

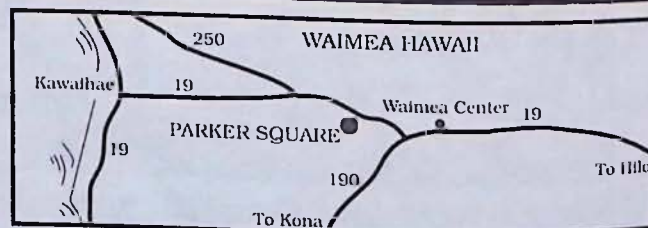
1-800-854-5662 or 885-4472

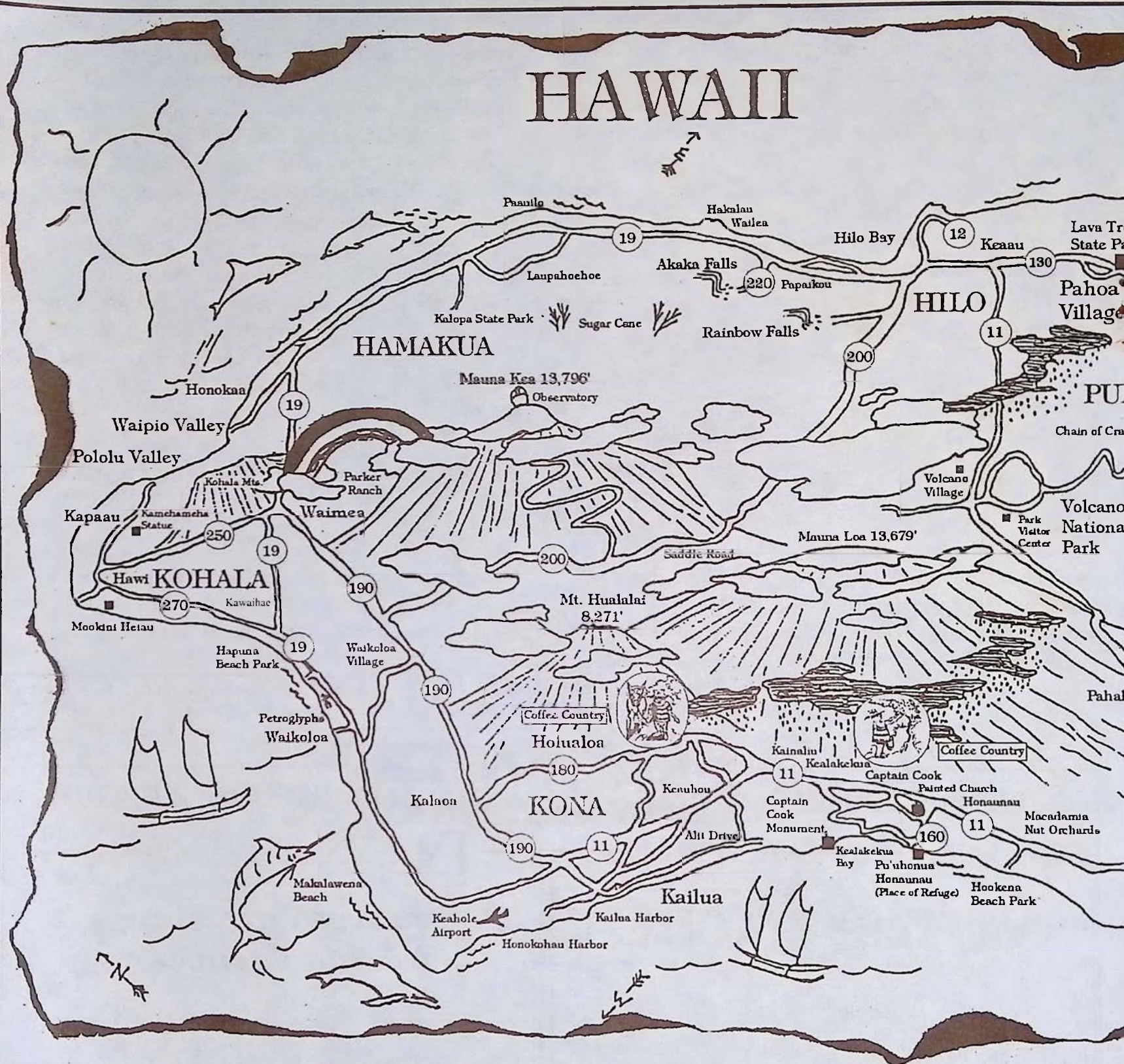
B·E·N·T·L·E·Y·S

**Country Furnishings
& Indulgences**

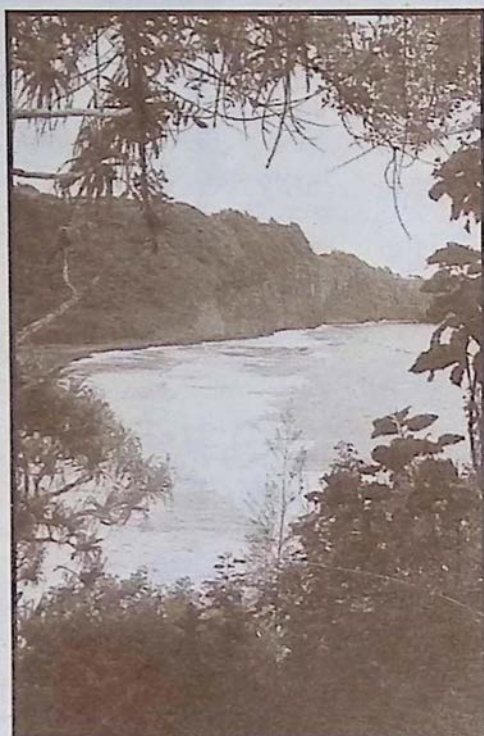


Located in up-country Waimea, Parker Square remains the favorite shopping grounds for both locals and visitors. The collection of shops, including the latest arrival of Waimea Coffee & Company, offers a variety of items for the home decorator or art collector. It's cool ranch-style setting, open grass square and wood boardwalk connecting the shops looks inviting to even the weariest visitor. So... stop by and visit, stay for coffee, browse, shop or simply relax. Parker Square will brighten your day!

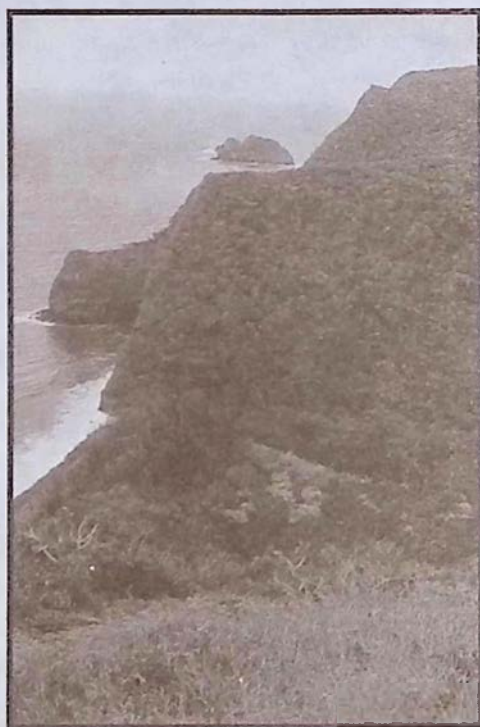




"North Kohala's Pololu Valley" Left: River inside Pololu Valley. Center: Wild horses stroll the beach at Pololu. Right: Viewing the M



Pololu Valley in North Kohala



Pololu's Neighbor Valley, Honokane Valley



Western Pacific from the ridge between Pololu and Honokane Valleys.

What To See...



HISTORIC HILO

Early 20th century Hawaii happily lives on in the storefronts and buildings of this yesterday town. Outside the town are magnificent Akaka Falls and Hawaii Tropical Botanical Garden to the north.



VOLCANOES NATIONAL PARK

Home of Pele, the Hawaiian goddess of fire. A region of unique features, volcanoes and a diverse biosphere. See page 6 of Coffee Times for volcano information.



CAPTAIN COOK MONUMENT

The spot in Kealahou Bay where English navigator, Captain James Cook was killed in 1779.



PU'UHONUA O HONAUNAU

An ancient Hawaiian village that is now a national park. Located in south Kona. Stop and see the Painted Church along the way on Hwy 160.



WAIPIO VALLEY LOOKOUT

Spectacular views into a lush valley of waterfalls, rivers and cascading cliffs. (4WD, horse, or a hike are necessary for access into the valley)



WAIMEA COUNTRY

In the heart of Big Island ranch country this western style town sits at the base of Mauna Kea.



AKAKA & RAINBOW FALLS

Two separate waterfalls northwest of Hilo. Easily accessed by car and short enjoyable paved hikes.



HEIAUS & PETROGLYPHS

Both can be found on the Kohala coast. The petroglyphs can be seen by following a path on top of the lava rocks at the Royal Waikoloan Resort.



POLOLU VALLEY LOOKOUT

A northern valley lookout. The road there will take you through friendly N. Kohala towns and perhaps a view of Hawaii's neighboring islands.



PUNA DISTRICT

Hosts the rustic western style town of Pahoa in addition to wild roadside orchids, steam vents, Lava Trees State Park and black sand beaches.



SOUTH POINT U.S.A.

The southern most point in the U.S. It boasts a magnificent ocean side drive through rolling green hillsides filled with Holstein cows grazing above a coast line of rugged cliffs and crashing waves.

continued from page 16

as far distant as land could be seen. We had now a fine breeze at East by North; and I steered for the East end of the second island; which, at noon, extended from North, half East, to West North West, a quarter West, the nearest part being about two leagues distant. At this time, we were in some doubt whether or not the land before us was inhabited; but this doubt was soon cleared up, by seeing some canoes coming off from the shore, toward the ships. I immediately brought to, to give them time to join us. They had from three to six men each; and, on their approach, we were agreeably surprised to find, that they spoke the language of Tahiti, and of other islands we had lately visited. It required but very little address, to get them to come along side; but no entreaties could prevail upon any of them to come on board. I tied some brass medals to a rope, and gave them to those in one of the canoes, who, in return, tied some small mackerel to the rope, as an equivalent. This was repeated; and some small nails, or bits of iron, which they valued more than any other article, were given them. For these they exchanged more fish, and a sweet potato; a sure sign that they had some notion of bartering; or, at least, of returning one present for another. They had nothing else in their canoes, except some large gourd shells, and a kind of fishing net; but one of them offered for sale the piece of stuff that he wore round his waist, after the manner of the other islands. These people were of a brown color; and, though of the common size, were stoutly made. There was little difference in the casts of their color, but a considerable variation in their features; some of their visages not being very unlike those of Europeans. The hair of most of them was cropt pretty short; others had it flowing loose; and, with a few, it was tied in a bunch on the crown of the head. In all, it seemed to be naturally black; but most of them had stained it, as is the practice of the Friendly Islanders, with some stuff which gave it a brown or burnt colour. In general, they wore their beards. They had no ornaments about their persons, nor did we observe that their ears were perforated; but some were punctured on the hands, or near the groin, though in a small degree; and the bits of cloth, which they wore, were curiously stained with red, black, and white colors. They seemed very mild; and had no arms of any kind, if we except some small stones, which they had evidently brought for their own defense; and these they threw overboard when they found that they were not wanted.

Seeing no signs of an anchoring place at this Eastern extreme of the island, I bore away to leeward, and ranged along the South East side, at the distance of half a league from the shore. As soon as we made sail, the canoes left us; but others came off, as we proceeded along the coast, bringing with them roasting pigs, and some very fine potatoes, which they exchanged, as the others had done, for whatever was offered to them. Several small pigs were purchased for a six penny nail; so that we again found ourselves in a land of plenty; and just at the time when the turtles, which we had so fortunately procured a Christmas Island, were nearly expended. We passed several villages; some seated near the sea, and others farther up the country. The inhabitants of all of them crowded to the shore, and collected themselves on the elevated places to view the ships. The land upon this side of the island rises, in a gentle slope, from the sea to the foot of the mountains, which occupy the center of the country, except at one place near the East end, where they rise directly from the sea, and seemed to be formed of nothing but stone, or rocks lying in horizontal strata. We saw no wood, but what was up in the interior part of the island, except a few trees about the villages; near which, also, we could observe several plantations of plantains and sugar canes, and spots that seemed cultivated for roots.

We continued to found, without striking ground with a line of fifty fathoms, till we came abreast of a low point, which is about the middle of this side of the island, or rather fourteen fathoms, over a

rocky bottom. Being past this point, from which the coast trended more Northerly, we had twenty, then sixteen, twelve, and, at last, five fathoms over a sandy bottom. The last soundings were about a mile from the shore. Night now put a stop to any farther researches; and we spent it standing off and on. The next morning, we stood in for the land, and were met with several canoes filled with people; some of whom took courage, and ventured on board.

In the course of my several voyages, I never before met with the natives of any place so much astonished, as these people were, upon entering a ship. Their eyes were continually flying from object to object; the wildness of their looks and gestures fully expressing their entire ignorance about every thing they saw, and strongly making to us, about every thing they saw, and strongly marketing to us, that, till now, they had never been visited by Europeans, nor been acquainted with any of our commodities, except iron; which, however, it was plain, they had only heard of, or had known it in some small quantity, brought to them at some distant period. They seemed only to understand, that it was a substance, much better adapted to the purposes of cutting, or of boring of holes, than anything their own country produced. They asked for it by the name of *hamaite*, probably referring to some instrument, in the making of which iron could be usefully employed; for they applied that name to the blade of a knife, though we could be certain that they had no idea of that particular instrument; nor could they, at all, handle it properly. For the same reason, they frequently called iron by the name of *toe*, which, in their language, signifies a hatchet, or rather a kind of adze. On asking them what iron was, they immediately answered, "We do not know; you know what it is, and we only understand it as *toe* or *hamaite*." When we showed them some beads, they asked first, "What they were; and then, whether they should eat them." But on their being told, that they were to be hung in their ears, they returned them as useless. They were equally indifferent as to a looking glass, which was offered them, and returned it, for the same reason; but sufficiently expressed their desire for *hamaite* and *toe*, which they wished might be very large. Plates of earthen ware, china cups, and other such things, were so new to them, that they asked if they were made of wood; but wished to have some, that they might carry them to be looked at on shore. They were, in some respects, naturally well bred; or, at least, fearful of giving offense, asking, whether they should sit down, whether they might spit upon the deck, and the like. Some of them repeated a long prayer before they came on board; and others, afterward, sung and made motions with their hands, such as we had been accustomed to see in the dances of the islands we had lately visited. There was another circumstance, in which they also perfectly resembled those other islanders. At first; on their entering the ship, they endeavoured to steal every thing they came near; or rather to take it openly, as what we either should not resent, or not hinder. We soon convinced them of their mistake; and if they, after some time, became less active in appropriating to themselves whatever they took a fancy to, it was because they found that we kept a watchful eye over them.

At nine o'clock, being pretty near the shore, I sent three armed boats, under the command of Lieutenant Williamson, to look for a landing place, and for fresh water. I ordered him, that if he should find it necessary to land in search of the latter, not to suffer more than one man to go with him out of the boats. Just as they were putting off from the ship, one of the natives having stolen the butcher's cleaver, leaped overboard, got into his canoe, and hastened to the shore, the boats pursuing him in vain.

The order not to permit the crews of the boats to go on shore was issued, that I might do everything in my power to prevent the importation of a fatal disease into this island, which I knew some of our

continued on page 28

Friendly North Kohala

Art Galleries, Fine Dining, Cafes, Quaint Shops, and even a local Ice Cream Factory

Following highway 270 north visitors will encounter a landscape filled with historical landmarks that include the original statue of King Kamehameha, Kalahikiola Church, and Mo'okini Heiau which is regarded as the oldest pre-Western contact temple of worship. In the year 1758 King Kamehameha was believed to be born at Mo'okini.



photo by Don Rich

Also to be found in the North Kohala region are the remnants of a once thriving sugar plantation industry of the 1880's which is still visible in the many old storefronts of Hawi & Kapaau towns. These towns are now preserved by a new generation of Hawaii business which have their own distinct local offerings. In Hawi Town, a fun romantic & wild boutique called **As Hawi Turns** awaits those visitors

seeking new clothing for the Hawaiian life-style and is not for the weak at the knees. The shop also carries handmade crafts by Big Island artists.

Next to As Hawi Turns is **Kohala Pacific Realty**, where visitors are welcome to stop in for free maps of the North Kohala region. On the other side of the street is the **Bamboo Restaurant and Gallery**. Inside what was once the grand old Takata Store,



built during the booming days of sugar cane, **Bamboo** combines Pacific Rim dishes with flavors from as far off as Thailand to create an innovative style of cuisine. Farm fresh herbs and local fish contributes a local flare to the food. The Kohala Koa Gallery, inside **Bamboo**, features Pacific Art and fine crafted wood furniture.

Just up the road a piece, smack dab in the middle of Kapaau Town is Hawaii's own local ice cream factory, **Tropical Dreams**. The owners, Lou and Deby Bleier, feature their fresh fruit sorbets and homemade ice creams and their original macadamia nut and honey butters in a parlor that fills one storefront in old Kapaau town. **FREE TASTES!!!** Across the street from the ice cream factory and also across from the King

continued on page 8

**KOHALA
COFFEE
MILL**

889-5577

WELCOME to the newest addition to
Big Island Coffee Houses
KOHALA COFFEE MILL
Located in the restored 1932 Toyama
Building in downtown Hawi

*Enjoy espresso, cappuccino and a
full line of coffee drinks (all made with 100%
Kona coffee).*

*Relax, share wisdom, 'talk story'
and feel the pace of old Hawaii in a shop
that is decorated with scenes from early Ha-
waii coffee plantation days.*

*Also featured are fine pastries,
fresh donuts, coffee accessories and gifts.*

Open 7 Days A Week

whether you choose...

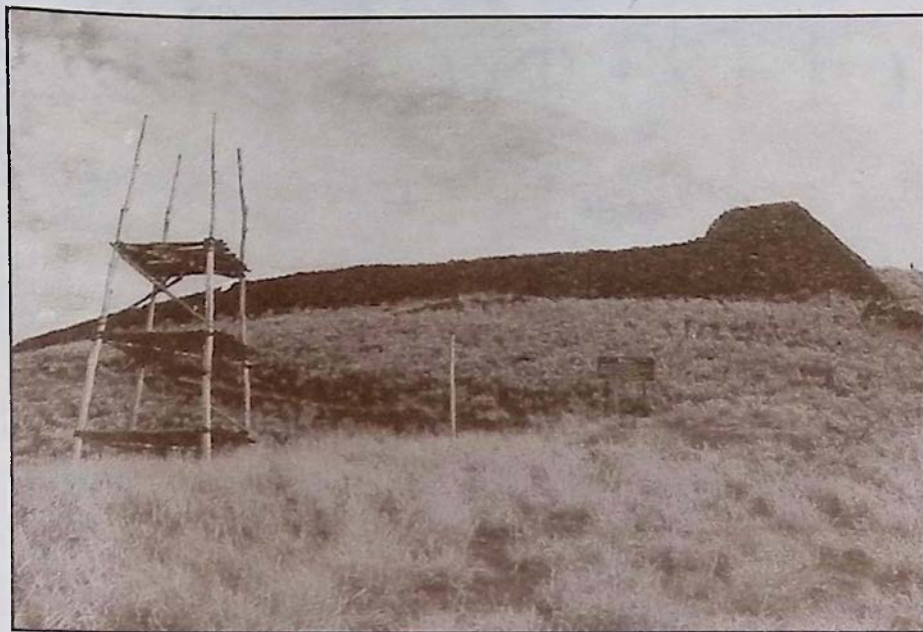
HAND-TOSSED PIZZAS, FINE PASTAS
OR
SCRUMPTIOUS DESSERTS
you will always get...

AN ADVENTURE IN TASTE

CAFE
Pesto
KOHALA COAST

OPEN FOR LUNCH & DINNER
Kawaihae Center, On the Kohala Coast, 882-1071

continued from page 23



Kamehameha statue artist Gary Ackerman reflects on the landscape around him through his impressionistic style of painted art on display in **Ackerman Galleries**. Gary's combination of a free liquid style on canvas and varied techniques of painting allows him to successfully blend the colors of the natural environment. Both galleries also feature the works of other local artists.

If the drive up the Kohala coast and gallery hopping has got your appetite going at this point, maybe it's time to visit **Don's Deli** across from the King Kamehameha statue. Let Don

prepare a sandwich from his large selection of cold cuts and cheeses or try one of his homemade vegetarian quiches or pastas. Don's Deli is a great place to relax before heading north to Pololu Valley.

The latest addition to downtown Hawi is the **Kohala Coffee Mill**. Owned and operated by Jon and Dixie Adams the historic Toyama building circa 1932 is now the home to a new coffee shop which will serve 100% Kona coffee at its espresso bar.

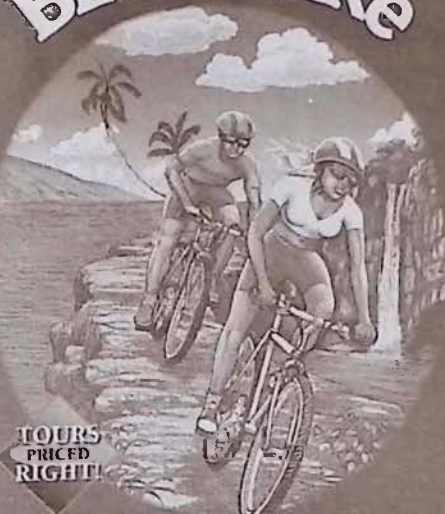


When you're done in town Hwy. 270 will lead you through North Kohala's fertile pasture lands, dense forests, and ultimately to Pololu Valley, which offers one of the best scenic view lookouts on the island. Along your way to Pololu their is **Wo On Gallery**, three miles past Kapaau town, which now occupies the old Wo On General Store, built by Chinese immigrants around 1920. The gallery hosts the works of only North Kohala artists, its youngest contributor being only 6 years old. Wearable art, sculptures, pottery, woodwork and watercolor paintings by Patrick Rankin can all be found at this local gallery.

If your interests lie in seeing all their is in this region

CHRIS' ADVENTURES

Bike or Hike




TOURS PRICED RIGHT!


See "the wilder side of paradise"
Bike or Hike down a volcano through scenic terrain and exotic tropics....
or maybe explore Secret Trails....
How about a magnificent Waterfall?...
or Experience "Hidden Hawaii" along the coast.
All these adventures...and much more!

Maul • Kauai • Hawaii • Molokai • Lanai
Big Island Call - 326-4600

Bike or hike at your own pace!



Fun, Informative Tour-Hosts



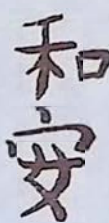
bamboo

Restaurant & Gallery

Lunch Tues. - Sat. 11:30 - 2:30pm
Dinner Tues. - Sat. 5:30 - 9pm
Pupus served all day
Sunday Brunch 9 - 2pm
(808) 889-5555

Fresh Island Cuisine
"In Old Hawaii"
in Hawi Town





Wo On Gallery

featuring:
wood, watercolors,
wearable art,
and much more

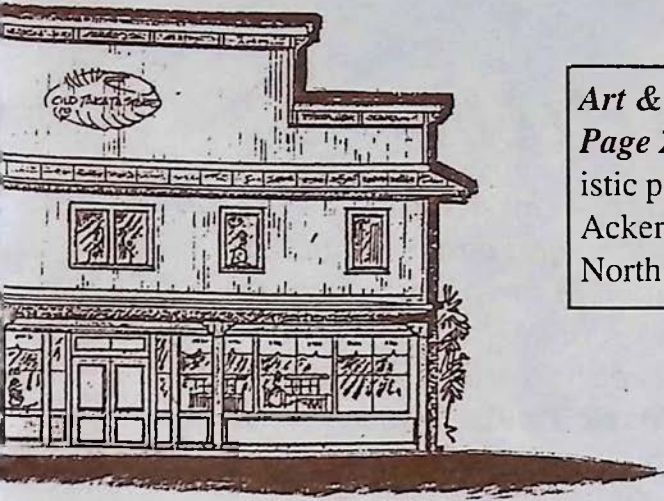
Devoted to the artists
of North Kohala
and showing work by: Sandra
Gray, Jim Parker, Lesley Patton
and Patrick Rankin
1/2 mile past the 25 mile marker
on 270 North
(808) 889-5002

Tropical Dreams™

Homemade Ice Cream
Sorbets & Frozen Yogurt
Used by Top Chefs of the Islands

Windows Cafe
"Every seat has a view"
Come have lunch,
but leave room for dessert
889-0505

OPEN DAILY:
Mon.-Sat. 11-5 • Sun. 1-5



Art & Photos: Page 23: The King Kamehameha statue in downtown Kapaau
Page 24: Kohala Coast Petroglyphs and Pu'ukohala Heiau **Below:** Impressionistic painting, "HAWAIIAN FISHING VILLAGE," by North Kohala artist Gary Ackerman. **Left:** The Old Takata Store, now the Bamboo Restaurant. Keeping North Kohala and its buildings alive are the goals of Kohala Pacific Realty.

Chris' Adventures offers a "bike at your own pace" bike tours and hiking trips through this region of the Big Island. The bike and hike adventures are suited for all levels of enthusiasts. Included with these tours are breakfast and lunch consisting of fresh fruit, coffee, tea, and baked goods in the morning and a Don's Deli sandwich for the afternoon's concluding picnic.

While driving along the coastline of North Kohala remember that if the skies are clear, you may be able to catch a view of the island of Maui looming from the other side of the Alenuihaha channel, which separates Maui from the Big Island. Between the months of December and April visitors are almost guaranteed a humpback whale sighting off the coast of North Kohala. This region of the Big Island is a particularly favorite spot for our migrating friends from the north. Perhaps the favorite way to cap off the afternoon in North Kohala is to stop in Kaiwihae and enjoy a Pacific Rim Italian meal at the original **Cafe Pesto** located in the Kaiwihae Shopping Center near the harbor. The reasonably priced meals are complimented by wonderful pastas, fresh salads and hand-tossed pizzas as well as an original selection of delicious desserts. If you are planning on visiting the town of Hilo Cafe Pesto can also be found in the old S. Hata Building near the bay front.

Come and enjoy this peaceful region of Hawaii. You will see and taste the wonders it has in store for you.



Ackerman
GALLERIES

ORIGINAL WORKS BY
 ISLAND ARTISTS
 ORIENTAL ANTIQUES
 PRIMITIVE ARTIFACTS AND GIFTS

Open daily 9:30 to 5:30 p.m.
 Both locations in Kapaau town Hwy. 270 North

(808) 889-5971

DON'S Family DELI

New...
 Fresh Fruit
 Smoothies &
 Carrot Juice

10% OFF
 all lunch orders over \$10
 see our coupon

sandwiches, lasagnes, quiches,
 pastas and chicken enchiladas
CAPPUCCHINO & ICE CREAM

CAFE LOCATED ACROSS FROM KING'S STATUE
MON-FRI 8-6 SAT/SUN 8-5
(808) 889-5822

**KOHALA
 PACIFIC
 REALTY**

Specializing in
**North Kohala
 LAND & HOMES**

Phone (808) 889-5181
 Fax (808) 889-5161

Located in the restored Toyama Building
 Downtown Hawi

P.O. Box 307 Kapaau, Hawaii 96755

Kailua-Kona

We landed at Kailua (pronounced Ki-loo-ah), a little collection of native grass houses reposing under tall cocoanut trees, the sleepest, quietest, Sundayest looking place you can imagine. Ye weary ones that are sick of the labor and care, and the bewildering turmoil of the great world, and sigh for a land where ye may fold your tired hands and slumber your lives peacefully away, pack up your carpetsacks and go to Kailua! A week there ought to cure the saddest of you all.

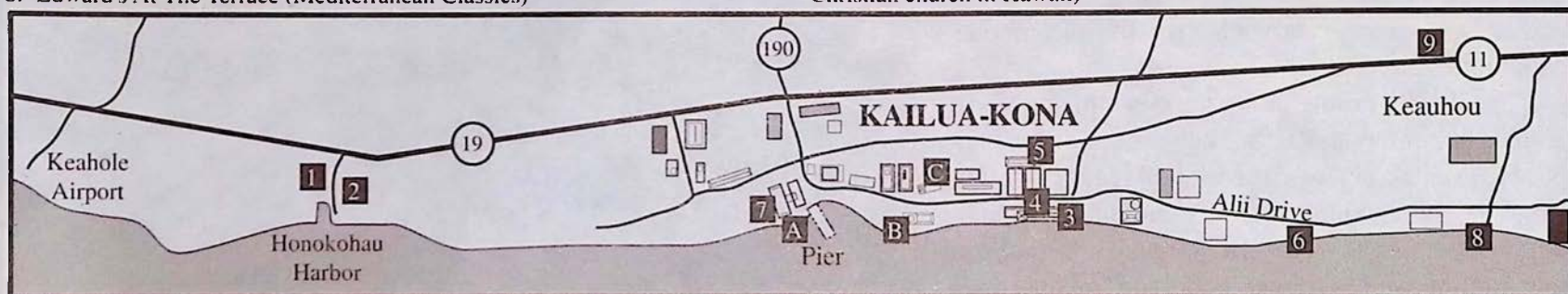
~Mark Twain 1866

1. Kona Kai-Yak (Rentals and Tours)
2. Impulse Charters (Sport Fishing)
3. Bosco the One Man Band (Live Music at the Kona Inn Shopping Village)
4. Moto Photo (One Hour Photo Developing)
5. Kona Marketplace Cinemas
6. Jill's Country Kitchen (Deli and Bakery)
7. Atlantis Submarines (King Kamehameha Kona Beach Hotel)
8. Edward's At The Terrace (Mediterranean Classics)

9. La Bourgogne French Cuisine (French Classics)

HISTORICAL SIGHTS:

- A. Ahuena Heiau (Constructed to honor the god Lono, Ahuena was King Kamehameha's center of rule from 1813 until his death in 1819)
- B. Hulihee Palace (Built in 1838 the palace was a vacation home for Hawaiian royalty)
- C. Mokuaukaia Church (Founded during the 1820's Mokuaukaia was the first Christian church in Hawaii)



IMPULSE CHARTERS

Affordable Sport Fishing

1/2 & Full Day Charters

For Reservations During
Your Stay on the Big Island
Call Today or for a Free
Brochure write.

FREE LUNCH
with full day charter

Capt. Roger Christiansen
73-4343 Ama Ama St.
Kailua-Kona, HI 96740

Located at Honokohau
Harbor (808) 325-7749



KONA MARKETPLACE

CINEMAS

February Feature Films:
Quick in the Dead & Heavyweights

FREE 3 HOUR PARKING WITH VALIDATION
at the Kona Marketplace on Alii Drive, Kailua-Kona
showtime info. call 329-4488

HAWAII'S ONLY Submarine Adventure

Come descend into the ocean world with us as we explore 25 acres of Kona's natural coral reef and hundreds of tropical fish. Life under the Hawaiian ocean will fascinate you! Hourly dives daily Departing from King Kamehameha's Kona Beach Hotel on Alii Drive in Kailua-Kona.

\$10 OFF SUBMARINE DIVE
with direct booking this coupon

For reservations please call or
see nearest activity desk.

(808) 329-6626

Atlantis
SUBMARINES

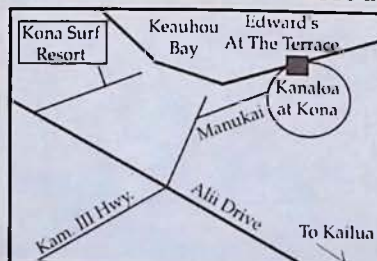
Edward's

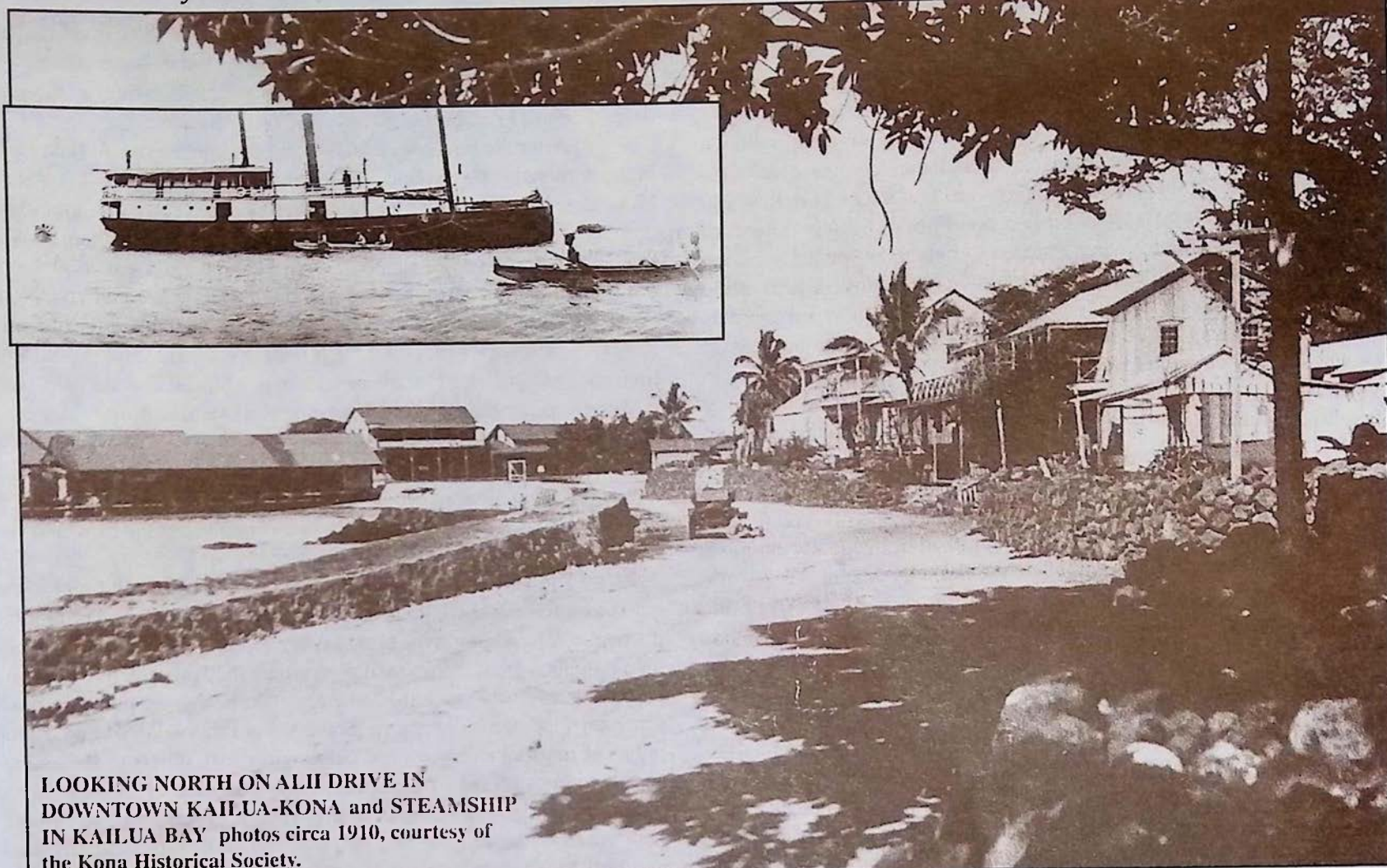
AT THE TERRACE

Featuring Mediterranean Classics,
Ocean Side Tues. - Sun.

Serving Breakfast, Lunch & Dinner 322-1434

Mention this ad for a free after dinner cup of Kona coffee





LOOKING NORTH ON ALII DRIVE IN
DOWNTOWN KAILUA-KONA and STEAMSHIP
IN KAILUA BAY photos circa 1910, courtesy of
the Kona Historical Society.



Located at Kona Bali Kai Condo,
76-6246 Alii Dr. by the Banyan
Surf Spot.

329-6010

FRESH HOME COOKED QUALITY

In our New Deli Location
Lunch & Dinner

Fresh Fruit Smoothies,
Deli Sandwiches, Quiches, Salads
(Home of the famous South Point Salsa)

And an outrageous Bakery:
Banana Split Cake, Kona Coffee Chocolate
Swirl, Lilikoi Cheese Cakes and more...

Stop by and try one of
our daily specials!

ONE HOUR MOTOPHOTO™

FREE SET OF PRINTS

with every roll of film developed

WITH THIS COUPON

329-2080 Kona Inn 322-8091 Keauhou

Located at: Kona Inn Shopping Village (1 hour) on Alii Drive
& at the Keauhou Shopping Village (overnight service)

GENTRY'S KONA MARINA,
HONOKOHAU HARBOR,
KAILUA-KONA



\$5 OFF KAYAK TOUR OR RENTAL WITH THIS AD.

RENTALS/SALES/TOURS CHRISTMAS HOLIDAY SPECIALS

Custom Kayak Tours Around The Big Is-
land, Day & Overnight Trips To Remote
Island Destinations.

(2 hour introductions, half or full day trips)

(808) 326-2922

continued from page 22

men now laboured under, and which, unfortunately, had been already communicated by us to other islands in these seas. With the same view, I ordered all female visitors to be excluded from the ships. Many of them had come off in the canoes. Their size, color, and features did not differ much from those of the men; and though their countenances were remarkably open and agreeable, there were few traces of delicacy to be seen, either in their faces, or other proportions. The only difference in their dress, was their having a piece of cloth about the body, reaching from near the middle, to half way down the thighs, instead of the maro worn by the other sex. They would as readily have favoured us with their company on board as the men; but I wished to prevent all connection, which might, too probably, convey an irreparable injury to themselves, and, through their means, to the whole nation. Another necessary precaution was taken, by strictly enjoining, that no person, known to be capable of propagating the infection, should be sent upon duty out of the ships.

Whether these regulations, dictated by humanity, had the desired effect, or no, time only can discover. I had been equally attentive to the same object, when I first visited the Friendly Islands; yet I afterward found, with real concern, that I had not succeeded. And I am much afraid, that this will always be the case, in such voyages as ours, whenever it is necessary to have a number of people on shore. The opportunities and inducements to an intercourse between the sexes are then too numerous to be guarded against; and however confident we may be of the health of our men, we are often undeceived too late. It is even a matter of doubt with me, if it be always in the power of the most skilful of the faculty to pronounce, with any certainty, whether a person who has been under their care, in certain stages of this malady, is so effectually cured, as to leave no possibility of his being still capable of communicating the taint. I think I could mention some instances which justify my presuming to hazard this opinion. It is, likewise, well known, that, amongst a number of men, there are, generally, to be found some so bashful as to endeavor to conceal their labouring under any symptoms of this disorder. And there are others, again, so profligate, as not to care to whom they communicate it. Of this last, we had an instance at Tongataboo, in the gunner of the *Discovery*, who had been stationed on shore to manage the trade for that ship. After he knew that he had contracted this disease, he continued to have connections with different women, who were supposed not to have already contracted it. His companions expostulated with him without effect, till Captain Clerke, hearing of this dangerous irregularity of conduct, ordered him on board.

While the boats were occupied in examining the coast, we stood on and off with the ships, waiting for their return. About noon, Mr. Williamson came back, and reported, that he had seen a large pond behind a beach near one of the villages, which the natives told him contained fresh water; and that there was anchoring ground before it. He also reported, that he had attempted to land in another place, but was prevented by the natives, who, coming down to the boats in great numbers, attempted to take away the oars, muskets, and, in short, everything that they could lay hold of; and pressed so thick upon him, that he was obliged to fire, which one man was killed. But this unhappy circumstance I did not know till after we had left the island; so that all my measures were directed as if nothing of the kind happened. Mr. Williamson told me, that, after the man fell, his countrymen took him up, carried him off, and then retired from the boat; but still they made signals for our people to land, which he

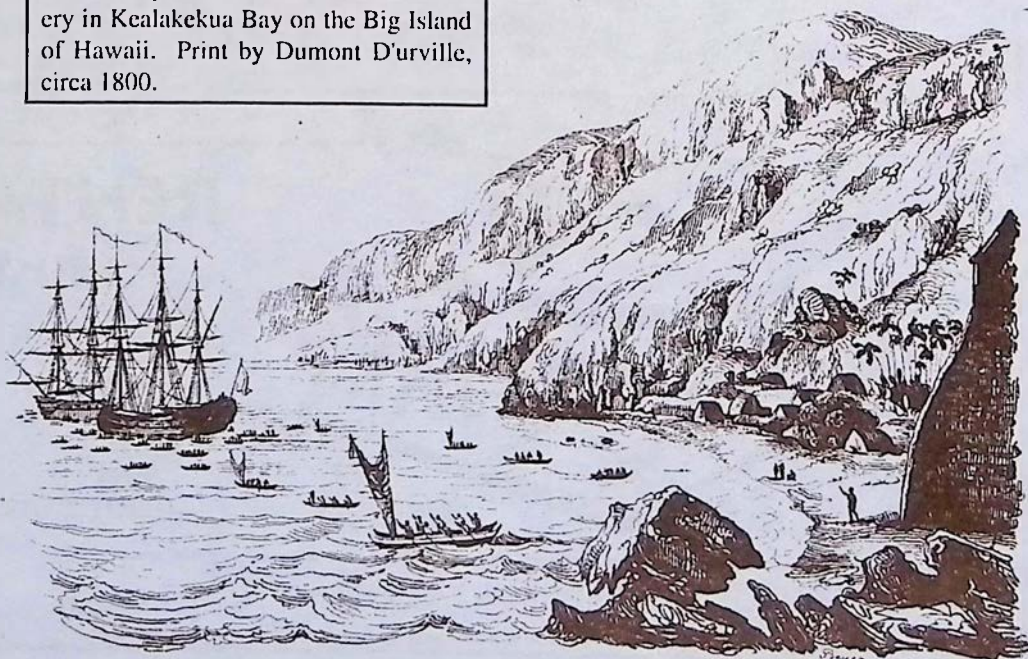
declined. It did not appear to Mr. Williamson, that the natives had any design to kill, or even to hurt, any of his party; but they seemed excited by mere curiosity, to get from them what they had, being, at the same time, ready to give, in return, anything of their own.

After the boats were on board, I dispatched one of them to lie in the best anchoring ground; and as soon as she had got to this station, I bore down with the ships, and anchored in twenty five fathoms water; the bottom a fine grey sand. The East point of the road, which was the low point before mentioned, bore South 51° East; the West point, North 65° West; and the village, behind which the water was said to be, North East by East, distant one mile. But, little more than a quarter of a mile from us, there were breakers, which I did not see till after the *Resolution* was placed. The *Discovery* anchored to the Eastward of us, and farther from the land. The ships being thus stationed, between three and four o'clock, I went ashore with three armed boats, and twelve marines, to examine the water, and to try the disposition of the inhabitants, several hundred of whom were assembled on a sandy beach before the village; behind it was a narrow valley, the bottom of which was occupied by the piece of water.

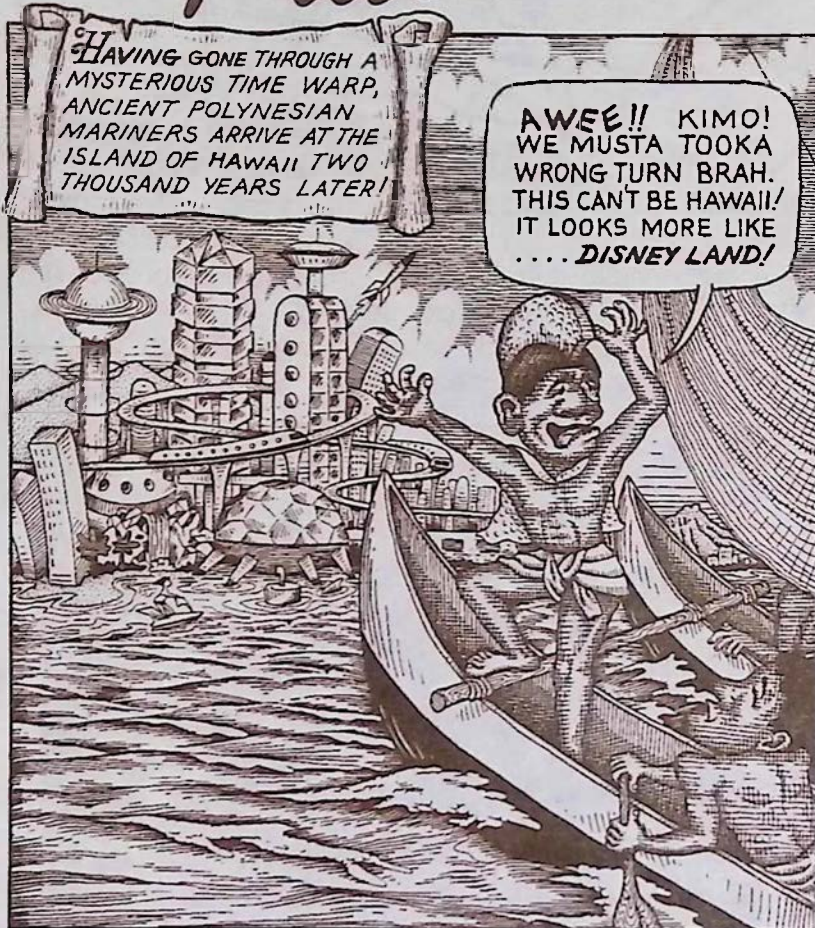
The very instant I leaped on shore, the collected body of the natives all fell flat upon their faces, and remained in that very humble posture, till, by expressive signs, I prevailed upon them to rise. They then brought a great many small pigs, which they presented to me, with plantain trees using much the same ceremonies that we had seen practiced, on such occasions, at the Society and other islands; and a long prayer being spoken by a single person, in which others of the assembly sometimes joined. I expressed my acceptance of their proffered friendship, by giving them, in return, such presents as I had brought with me from the ship for that purpose. When this introductory business was finished, I stationed a guard upon the beach, and got some of the natives to conduct me to the water, which proved to be very good, and in a proper situation for our purpose. It was so considerable, that it may be called a lake; and it extended farther up the country than we could see. Having satisfied myself about this very essential point, and about the peaceable disposition of the natives, I returned on board; and then gave orders that everything should be in readiness for landing and filling our water casks in the morning.

(It should be noted that there is evidence, through the use of 16th century maps, supporting earlier discoveries of Hawaii by Western man. Cook, however, was the first to document the discovery in writing.)

Cook's ships the *Resolution* and *Discovery* in Kealahakua Bay on the Big Island of Hawaii. Print by Dumont D'urville, circa 1800.



Pritchett



© 1993 JOHN S. PRITCHETT

From the Southernmost District of Hawai'i Island

KA'U LANDING

(808) 928-6449

P.O. Box 160, Pahala, Hawai'i 96777

In-depth and ongoing coverage of the land, the people and the issues that affect the present and the future of our Big Island Communities.

☐ 1 year (12 issues) \$12 ☐ Sample Copy \$1.50

Island Books

ISLAND BOOKS

FINE USED BOOKS BOUGHT & SOLD

Hawaiiana, Classic & Modern
Literature, Mysteries, Art, Mythology,
Miscellany

Located in Kainaliu
1/4 mile south of the
Aloha Theater

322-2006

P.O. Box 645
Kealahou, HI 96750

KONA COFFEE LACE COOKIES

| | |
|-----------|------------------------------|
| 1/2 cup | unsalted butter, room temp. |
| 1/2 cup | packed brown sugar |
| 2 tbsps. | 100% Kona Espresso |
| 1/4 cup | heavy or whipping cream |
| 4 ozs. | semisweet chocolate, |
| | chopped |
| 1/4 cup | unbleached all purpose flour |
| 1/8 tspn. | baking soda |
| 1/4 tspn. | salt |
| 1 cup | quick cooking oats |
| 1/2 cup | shredded coconut |
| 1/2 cup | chopped pecans |

Preheat oven 350 degrees F. Grease and flour cookie sheets. Cream the butter and sugar in a mixer bowl until light and fluffy, about 5 minutes. Beat in 1 tbspn. of the espresso. Heat the cream to boiling in small saucepan. Reduce heat and stir in the remaining 1 tbspn. of espresso. Simmer 2 to 3 minutes. Remove from heat and stir in the chocolate until it melts and mixture is well blended. Beat 1/3 cup of the chocolate mixture into the butter mixture. Sift the flour, baking soda and salt together. Stir into the butter mixture. Fold in the oats, coconuts and pecans. Drop rounded teaspoons of the batter 2 inches apart onto the prepared cookie sheets. Bake for 8 minutes. Remove from the oven and let cool on the cookie sheets for 5 minutes to harden. Drizzle the remaining chocolate mixture over the cookies in a lacy pattern.



Visit the Original Bad Ass Coffee Company
Store in downtown Kainaliu.

ROASTED FRESH DAILY



Come see our original line of Bad Ass Merchandise that includes, t-shirts, mugs, candy bars, hats and the best line of Kona coffee.

The Bad Ass Coffee Company
1-800-338-7139 (808) 322-2825

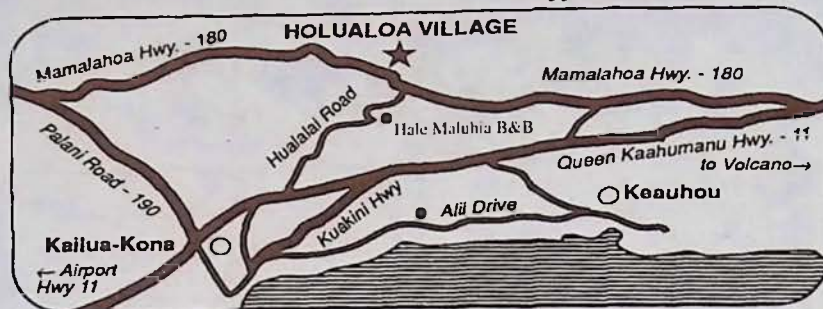
Holualoa

Aloha & Art

Days pass slowly in the artist's retreat town of Holualoa, almost like the gentle mountain breezes which weave their way through the groves of coffee trees lining the slopes of Mt. Hualalai. Steeped in natural beauty and tradition, this little mountainside coffee town blends a touch of today's art with a passion for the simpler life of the past. The village's many private galleries showcase the works of many local artists in a wide array of mediums.

When you are done visiting the galleries, the friendly local espresso bar, **Holuakoa Cafe**, will undoubtedly snatch an hour or two from your day and maybe more if you decide to indulge in the homemade cake and pastry selection. Every Thursday night the sound of acoustic guitars may be heard in the night air strumming over a chorus of 'gone happy' coffee drinkers packing the cafe for Holualoa's only night time entertainment. (Give cafe owner, Meggi Worbach, a call at 322-CAFE for an up to date scoop on her local entertainment schedule).

If you are looking for a place to spend the night, **Hale' Maluhia** (House of Peace) Bed and Breakfast is



located below the village on Hualalai road. This rambling home offers guests a sense of seclusion and a touch of paradise and is outfitted with several lanais, an outdoor spa, kitchen and even office facilities.

Make it a point to wander up for a visit to Holualoa you will love this adorable country town.



Come and Sing Along with the Live Band Expresso Thursday Nights at Holuakoa Cafe from 7:00 to 10 pm



Hale' Maluhia

Bed & Breakfast

GRACIOUS KONA PLANTATION LIVING UP-COUNTRY COFFEE LAND

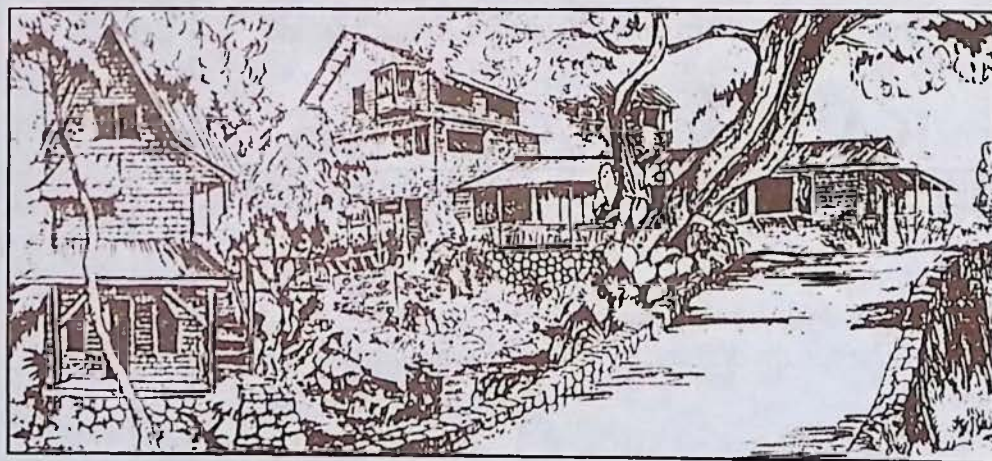
- * Truly, a friendly touch of Aloha, in Old Hawaii
- * Great rooms, Comfortable Beds, Private Baths
- * Custom Stone/Tile Spa, Waterfalls, Koi Ponds
- * Double Rm. with full buffet breakfast from \$50
- * 3.5 miles to Kailua-Kona, Easy airport access

For reservations or a FREE brochure write or call:

76-770 Hualalai Rd. Kailua-Kona, HI 96740

Toll Free 800-559-6627, (808) 329-5773,

Fax (808) 326-5487



Holuakoa

Cafe

ESPRESSO BAR

HOURS: Mon-Sat 6:30am - 5pm Thurs. nites
7-10pm Closed Sunday **322-CAFE**



For that delicious coffee drink
in an upcountry atmosphere,
stop on by Holualoa's most
Happenin' Scene...

Love, *Meggi*

PS. Don't forget to come in and hear our
new live music on Thursday nights!

Coffee Times 100% PURE KONA™ COFFEE

Hand Picked, Sun Dried and Truly Graded

Did you know that out of the 20 million pounds of Kona Coffee bought and consumed every year under the name Kona only 2 million pounds of that coffee is actually grown here in Kona? And the frightening fact of the matter is...that most Kona coffee drinkers around the world have no idea that what they're drinking is a coffee containing 90% of something other than Kona coffee. It's time for this deceptive labeling and misuse of the Kona name to end. In an attempt to preserve the coffee growing heritage here in Kona and the gourmet reputation of our local coffee and to combat this widespread misrepresentation of the Kona name to sell counterfeit coffee we here at Coffee Times magazine unconditionally guarantee that the coffee you receive from us is farmer direct, contains only 100% Kona coffee and meets the State of Hawaii's highest grading standards. Enjoy the pure taste of the world's finest coffee and help preserve our local farm lands by buying only 100% Kona.



Our Mail Order Coffee Makes The Perfect Gift ~ Hotel Delivery Available ~ We Only Roast To Order!

ORDERING INFORMATION

| Type | Roast | Lbs. | Total |
|-------|-------|-------|----------|
| _____ | _____ | _____ | \$ _____ |
| _____ | _____ | _____ | \$ _____ |
| _____ | _____ | _____ | \$ _____ |
| _____ | _____ | _____ | \$ _____ |
| _____ | _____ | _____ | \$ _____ |
| _____ | _____ | _____ | \$ _____ |

Delivery Charges \$ _____

In U.S. please add \$3.50 for 1st pound & \$1.50 for each additional pound (Call for international fees)

Grand Total \$ _____

Please mail with check or money order to:
Coffee Times, P.O. Box 1092, Captain Cook, HI 96704

_____ by Credit Card
circle one
(MC) (VISA) (AM EX)#: _____

Exp. Date: _____ Name: _____

Signature: _____

Ship To: _____

Please allow up to 1 week for delivery

PEABERRY

The finest Kona coffee bean available (The result of single bean growth in the usual two bean coffee cherry)

17.95/lb. 84.95/5 lbs. 159.95/10 lbs.

EXTRA FANCY

Exquisite taste, high elevation, large single bean coffee

16.95/lb. 79.95/5 lbs. 149.95/10 lbs.

FANCY

Excellent quality, average sized bean, high cupping standard

14.95/lb. 69.95/5 lbs. 129.95/10 lbs.

PRIME

Choice bean of most specialty Kona coffee consumers.

12.95/lb. 59.95/5 lbs. 109.95/10 lbs.

FLAVORED KONA (Prime) COFFEE

Vanilla, Macadamia Nut & Chocolate Macadamia Nut
15.95/lb.

(please specify medium, dark or espresso roast)

Other Goods Offered:

T Shirts \$15.00 (add \$1.50 each shirt for shipping)
*(Coffee Times Logo on front, counterfeiting cartoon on back)
please specify Large or Xtra Large shirt size)*

Kona Coffee Crunch Candy \$2.50 2.5oz pkgs.
(1-4 pkgs. no shipping chg., 5 or more add 1.50 for each five)
(These Homemade Hawaiian Candies contain Hawaiian Macadamia Nuts, English Toffee, and 100% Kona™ Coffee Beans Smothered in Rich Bittersweet Chocolate.)

WE SHIP WORLD WIDE
1-800-750-KONA

In Hawaii Call: (808) 326-7637
P.O. Box 1092, Captain Cook, HI 96704



We welcome the
American Express Card

Don't Leave Home Without It.

SOUTH KONA

Kona Coffee Farms, Kealahakua Bay, Captain Cook Monument, Pu'uhonua O Honaunau, The Painted Church

There perhaps is no other region on the Big Island shrouded in more history than the district of South Kona. Whether it be the origins of Kona coffee, the ancient Hawaiian village setting of *Pu'uhonua O Honaunau* (Place of Refuge) National Park, or the Painted Church nestled along the hillside overlooking Kealahakua Bay, the spot where the famous English explorer Captain Cook met his fate in 1779, South Kona will keep the historically minded visitor busy weaving their way through its network of mountain roads.

High on the slopes and off Hwy. 160 is The Painted Church, where sometime between 1899 and 1904, Father John Velge, a Catholic missionary from Belgium painted images on the interior walls of the church depicting the biblical scenes of heaven and hell. Near The Painted Church is the rural



Tiki Carvings at Pu'uhonua O Honaunau National Park in Honaunau.

setting of **Wakefield Gardens Restaurant**. Owner Arlene Wakefield serves lunch daily at her botanical garden setting in Honaunau. Look for her famous Papaya Boat with tuna salad, it has become a favorite dish among the local population and continues to thrill visiting diners. The restaurant is open for lunch only and includes a free tour of the botanical gardens surrounding the estate.

If your time in South Kona allows for it leave room in your stay for the "Narcissus" at therapist Sheila Pattison's **Querencia Spa**. Her massage treatment includes a jacuzzi, herbal facial, full body massage, beverages, light pupus and a catered gourmet dinner in the Spa's Tea Room. Custom catering is available to meet all your needs.

From the wonders of The Painted Church, Middle Keel road empties out onto Napoopoo Road before passing **Bay View Farms and Mill**, family owned and operated



Featuring:

"The Narcissus"

A Very Special Private Affair

A romantic candlelight massage for couples followed by a catered supper and pupus.

Insurance & Work Comp.
Accepted

mat. 2225 mat. 3053

Massage, Body Wraps &
Pacs, Injury Therapy,
Jacuzzi & Hydrotherapy

*Located near the Place of Refuge
in Honaunau*

(808) 328-2569



Querencia Spa Tea Room



An artists cooperative located in the headmaster's quarters of an old Japanese schoolhouse in Honaunau, this site offers a glance into older and quieter Hawaii. A wonderful place to view fine, affordable local art.

Find us at SKEA on Hwy. 11 between mile markers 106-105 on the makai (ocean) side of the road.

Cottage Gallery

at SKEA

Paintings

Sculpture

Pottery

Stained Glass

Jewelry

Quilting

Wearable Art

Candles & Woodwork

328-9392

OPEN Tues-Sat 9am-5pm



**FREE BOTANICAL
GARDEN TOUR**

Buy one get one Free Papaya Boat filled
w/Tuna Salad & Herb Dressing!!!
with this coupon

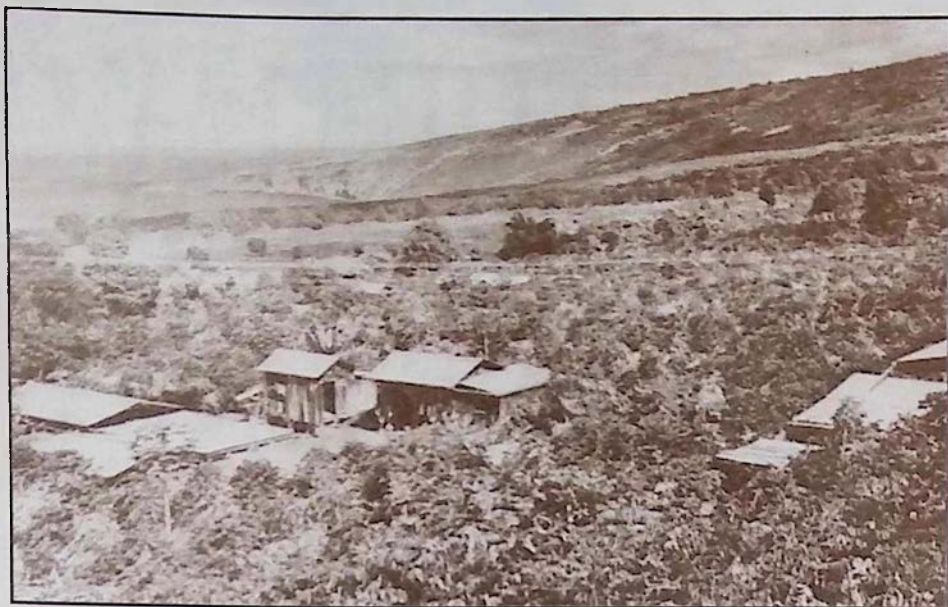
Homemade sandwiches, soups, full vegetarian
fare, Kona Coffee, fresh baked pies
OPEN 11 am to 3 pm (7 days a week)

(808) 328-9930 P.O. Box 18, Honaunau, HI 96726

A TRULY RURAL DINING EXPERIENCE



Located in the heart of coffee country, Hwy. 11 south to
Hwy. 160 (Painted Church & Place of Refuge)



Looking north across the South Kona coffee country into Kealahou Bay, circa 1930, courtesy of Kona Historical Society.

by New Hampshire native Andy Roy and his wife Rosalyn. Over the distant hum of pulping and grading machines the sweet and damp smell of freshly pulped coffee cherry fills the air during the fall and winter coffee season. An extensive system of out-lying drying decks and groves of coffee trees cover the landscape in front of the now visible cliffs of Kealahou Bay, which in the hazy distance plummet their way seaward. Bay View Farms has recently added a rural coffee and gift shop to their operation, where guests will have the opportunity to 'cup up' some 100% pure Kona coffee. Farm and mill tours available at Bay View are also available at the upslope Old Hawaiian Coffee farm and mill that dates back to the late 1800's and also at Langenstein Farm, where coffee is grown, picked, milled and roasted exclusively on the Estate. For personalized group tours at any of these farms feel free to call ahead for an appointment. Also located in South Kona is the Kahauloa Coffee Co. high above Kealahou Bay on Hwy. 11. The Kona coffee outlet also hosts a deli and espresso bar including a covered porch area perfect for lunch. From the porch visitors have the chance to overlook some of Kona's most bountiful coffee farms.

At the bottom of Napoopoo Road is Hikiau Heiau at Kealahou Bay, and a white stone monument across the bay that marks the spot where Captain Cook was killed in 1779.

Kona Historical Society Museum

The Kona Historical Society, a non-profit organization, was founded in 1976 to collect, preserve and disseminate information about the history of the Kona districts on the island of Hawaii. It maintains a growing reference library and archive containing photographs, manuscripts, maps and oral histories as well as a small collection of artifacts.

Historical Photo Exhibits on display every month

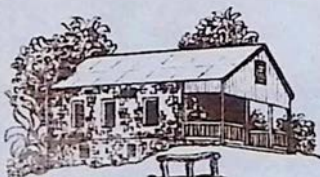
Museum Hours:

9:00 a.m. - 3:00 p.m. Weekdays

Closed All Holidays

ADMISSION IS \$1.00

(members & children under 12 free)



Located on Highway 11, one-half mile south of rural Kealahou. P.O. Box 398 Captain Cook, HI 96704 TELEPHONE (808) 323-3222

The story behind Cook's death was that it was the result of a failed attempt by Cook and his soldiers to take the high chief Kalaniopuu hostage in return for a cutter that was stolen the night before. Cook, who had come south to the Hawaiian Islands seeking shelter for the winter months, was in search of a northwest passage to England.

A lower coastal road connects Kealahou Bay to Pu'uhoonua O Honaunau (Place of Refuge) National Park. In the early years of Hawaiian civilization it was the Place of Refuge that people who broke *kapu* (sacred laws) would attempt to flee. If the *kapu* breaker could reach this sanctuary his life would be spared. Some of these *kapu* that governed the common people included not being allowed to walk in the footsteps of the chiefs or to touch their possessions. Other rules forbade commoners from eating foods reserved for offering to the gods, and women were not allowed to eat with the men. The gathering of wood, seasons for fishing and the taking of

animals as well as the *hula* were also controlled under the *kapu* system. Other features at the park are *lokos* (ancient fish ponds), *hales* (thatched roof structures that served as homes), *heiaus* and ancient rock walls. Visitors are usually provided with live demonstrations of ancient Hawaiian crafts such as the building of canoes and tikis at the park.

Back out on Hwy. 11 the Cottage Gallery hosts the works of area artists with many affordable pieces being offered as the perfect mementos of your stay in South Kona.

KAHAULOA COFFEE CO.

PLANTATION

DIRECT OUTLET

• DELI & ESPRESSO BAR •

Tasting Room

Our Plantation is located next to the coffee trees which bear our famous beans. We do all our own roasting and packaging here at the Kahauloa Coffee Company's direct outlet. Let us serve you a Freshly brewed cup of coffee while overlooking this beautiful valley of coffee trees. Look for our coffee in stores and we also Mail Order.

We are located near mile marker 109 on Hwy. 11 in Captain Cook, South Kona. Call or Write for a Free Brochure.

(808) 328-9555

P.O. Box 510, Captain Cook, HI 96704

1-800-800-6267



Bed & Breakfasts of THE HAWAII

HAMAKUA & KOHALA REGIONS

1. Kamuela's Mauna Kea View Ph: (808) 885-8425

Popular private Suite and COTTAGE (each with JFireplace, Kitchette, Sun deck, Telephone and color TV) Bordering Parker ranchlands with panoramic views of 14,000 ft. Mauna Kea. Enjoy Hapuna and Island's best white sand beaches, historic Waipio & Pololu Valleys and world class resorts. A Kamuela tradition of hospitality since 1988!

Richard & Deh Mitchell, P.O. Box 6375, Kamuela, HI 96743

2. Luana Ola B&B Cottages Ph: (808) 775-7727, 1-800-357-7727

In the coastal village of Honokaa, charming, private, new cottages overlook sweeping ocean views. Kitchenette, full bath, large porch, laundry facilities, private phone, wheelchair accessible, breakfast of fresh fruit, muffins, coffee, teas and juice. Walk to Honokaa town, tennis & golf. Waipio Valley nearby. \$75/night.

Tim & Jeannie Mann, P.O. Box 430, Honokaa, HI 96727

3. Suds' Acres Ph: 808-776-1611, 1-800-735-3262

We are located on a macadamia farm at 1800' elevation on the slopes of Mauna Kea with a view of the Hamakua coast. Our 2 bedroom cottage with bath, lvg. rm. is 5 miles to Honokaa & 20 miles to Waimea. Additional rooms in main house, color TV in all units.

P.O. Box 277, Paauiilo, HI 96776

4. Waimea Gardens Cottage Ph: (808) 885-4550, 1-800-262-9912

Charming streamside cottage, inspected and rated "Excellent" by the American B&B Assn., has 2 units on 1 1/2 acres in the foothills of the Kohala Mtns. French doors open to private patios; private baths; .2 mi. west of Waimea town; 8 mi. to best beaches. \$110 dbl.; Min. 3 Nts.

Write: P.O. Box 563, Kamuela, HI 96743

5. Waipio Wayside B&B Ph/Fax: (808) 775-0275, 1-800-833-8849

Experience the gracious hospitality of a 1938 sugar plantation home. We cater to those who wish to unwind in a comfortable atmosphere. Choose from 5 unique bedrooms, 2 with full bath, 1 with 1/2 bath. 1 night stay \$70-\$100, multiple nights \$60-\$90 plus tax.

Jackie Horne, P.O. Box 840, Honokaa, HI 96727

HILO REGION

6. Holmes Sweet Home B&B Ph: (808) 961-9089

Sweeping view of Hilo Bay. Cool, quiet, tropical setting 5 minutes from restaurants, shopping, ocean. 15 minutes from airport - 2 rooms with queen beds, private baths and entrances. Guest lanai and sitting room with microwave & frige. Fresh Hawaiian fruit, Kona coffee, island juices, teas, homemade breads served. \$60-\$70 plus taxes. Please phone for availability.

John & Charlotte Holmes, 107 Koula St., Hilo, HI 96720-1625

KAU REGION

7. Becky's B&B Ph/Fax: (808) 929-9690 or 1-800-235-1233

Rooms affordable \$38 up, with private baths & entrance, full breakfast cable TV. Black or Green sand beaches, swim with turtles, golfing. Or after a long day, just sit in our whirlpool spa & enjoy a lovely evening under the stars. Our town, gives you a feeling for old Hawaii.

Becky & Chuck McLinn, P.O. Box 673, Naalehu, HI 96772

8. Bougainvillea B&B Ph/Fax: (808) 929-7089 1-800-688-1763

Nights & Breakfasts to Remember. In historic "Kau" district between Kona & Hilo. Near green & black sand beaches, South Point & Ocean View. Rooms-pvt. bath, entrance & TV/VCR. Awesome view of the stars from the pool & spa. Hosts Martie & Don Nitsche share secrets of Hawaii.

P.O. Box 6045, Ocean View, HI 96737

9. Wood Valley B&B Ph:(808) 928-8212, 1-800-854-6754

Vintage plantation home/farm- in misty uplands above rural sugar town. Near Green & Black sand beaches, ocean view. Unique outdoor bath and steam house, quiet healing environment, homegrown breakfast Hawaiian. Gay Friendly.

P.O. Box 37, Pahala, HI 96777 Fax 808-928-9400

KONA REGION

10. Lion's Gate Bed & Breakfast Ph/Fax: (808) 328-2335

Enjoy a country lifestyle on a working macadamia nut farm with all the conveniences of modern life. Secluded and completely private with panoramic vistas of Kealahakua Bay & the Kona Coast. Tropical fruits, mac nuts, Kona Coffee & fresh baked breads and rolls for breakfast.

P.O. Box 761, Honaunau, HI 96726

11. Hale Maluhia, Ph: (808) 329-5773, US: 1-800-559-6627,

Up-Country Kona Plantation Living just 3 miles to Kailua-Kona with easy airport access. Big Beds, Pvt. Baths, Spa, Stream, Waterfalls, VCR Lib. Fresh ranch eggs, homemade breads, local fruits & juices, Pure Kona Coffee. Snorkle & Beach Equip. Rooms from \$50, Cottages from \$100, fax 326-5487.

76-770 Hualalai Rd, Kailua-Kona, HI 96740



HAWAII ISLAND B&B ASSOCIATION

12. Merryman's B&B Ph: (808) 323-2276 1-800-545-4390

Charming ocean view B&B in Kealahou, minutes from the best snorkeling. Enjoy immaculate, spacious rooms furnished w/antiques & fresh flowers. A delightful Hawaiian breakfast of fresh fruits, chef's special & Kona coffee is served each morning. Snorkel gear & beach supplies provided.

P.O. Box 474, Kealahou, HI 96750

13. Three Bears's B&B Ph/fax: (808) 325-7563, 1-800-765-0480

Enjoy spectacular ocean views from our new cedar home nestled amongst tropical fruit trees & flowers. Located above Kona Coast Beach Park, our rooms feature private baths, TV, micro, refrig., coffee maker. A hearty breakfast is served on the lanai. Wir sprechen Deutsch.

Anne Stockel, 72-1001 Puukala, Kailua-Kona, HI 96740

VOLCANO REGION

14. Carson's Volcano Cottage Ph: (808) 967-7683 1-800-845-LAVA

Secluded, peaceful B&B next to Volcano Natl. Park. Beautiful theme rooms, with botanical garden views. Unique Bromeliad collections. Romantic outdoor jacuzzi. All rooms have private entrances and baths. Some with fireplaces. Rates start at \$65.00 night.

P.O. Box 503, Volcano, HI 96785

15. Chalet Kilauea-The Inn at Volcano Ph: 1-800-937-7786

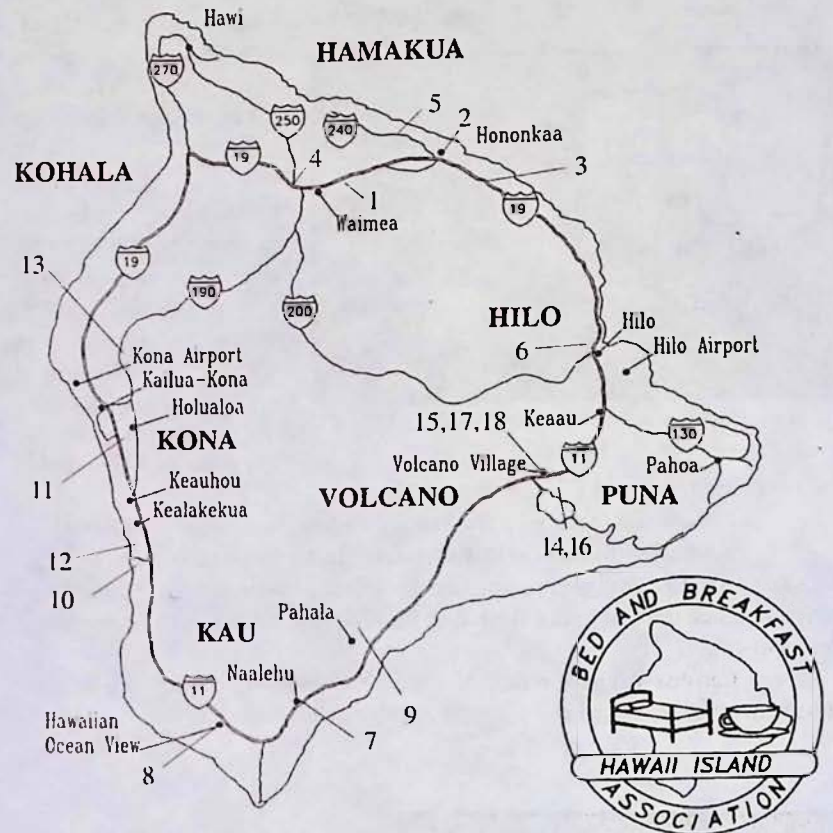
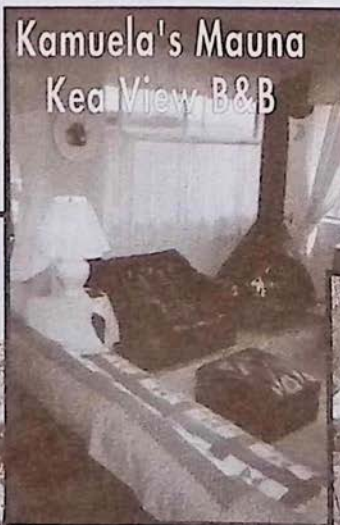
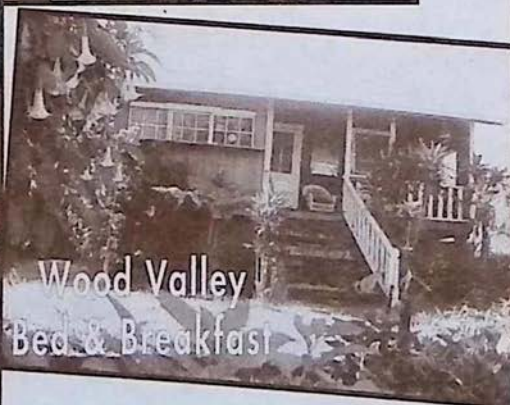
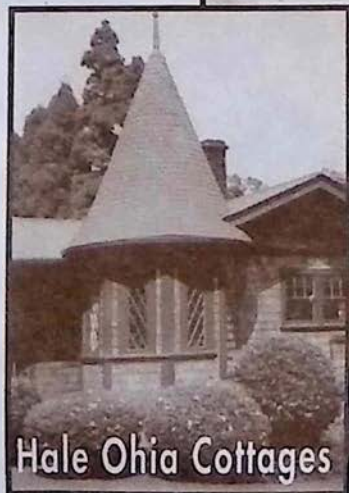
EXPLORE TREASURES FROM AROUND THE WORLD. Amazing Theme Rooms, Tree House suite (\$75-\$175). Amenities include: jacuzzi, TV, fireplace, library, sunken tub, robes, flowers, chocolates, maid service, afternoon tea and a candlelight 2-course gourmet bkfst. Just outside Volcanoes National Park.

P.O. Box 998, Volcano Village, HI 96785

16. Hale Ohia Cottages Ph: (808) 967-7986, 1-800-455-3803

Noted in the NEW YORK TIMES, the SOPHISTICATED TRAVELER, historic hideaway, unique architecture, garden setting, fireplaces, heated Japanese Furo, breakfast brought to your room. All accommodations have private baths. One mile from Natl. Pk., Rates: \$60 to \$95.

Michael Tuttle, Box 750, Volcano, HI 96785



17. Lokahi Lodge Ph: (808) 985-8647 or 1-800-457-6924

Newest, affordable LUXURY B&B in Volcano. 1 mile to Volcano Natl. Park, offers accommodations with private baths & entrances to each room. A sumptuous breakfast includes fresh baked homemade bread, juices, fruits, jams, coffee and teas. A haven for those who want to be pampered!

P.O. Box 7, Volcano, HI 96785

18. My Island B&B Ph: (808) 967-7216, 808-967-7110, Fax: 808-967-7719

An 1886 historic missionary home at Kilauea Volcano surrounded by a 5 acre botanical estate. Rooms in main 3 story house with shared or private bath. Couples, singles & families welcome. Full breakfast. \$30 to \$75. All the macnats you can eat.

Gordon & Joann Morse, P.O. Box 100, Volcano, HI 96785

Our Monthly Big Island Bed & Breakfast Review

CARSON'S VOLCANO COTTAGE: Innkeepers: Brenda and Tommy Carson. P.O. Box 503, Volcano, HI 96785, (808) 967-7683, 1-800-845-LAVA. Rates: \$65-\$100. Notes: Minutes from Hawaii Volcanoes National Park, private baths/entrances, hot tub, wood burning stoves and vacation homes.

High on the slopes of an ancient mist shrouded volcano, deep in the lush fern forest is where you'll find Hawaii's most wonderful bed and breakfast, Carson's Volcano Cottage. This B&B is very tranquil, private and unique as Balinese Statues

guard the winding walkways that weave through botanical gardens to your room or hot tub pavilion.

At Carson's you may choose between four deluxe theme rooms such as the Kahau'a'lea Room. This room features Hawaiian Monarchy period decor. Lace curtains soften the light coming in from the lush tropical gardens. Antiques grace the room as well as period pho-



Carson's Volcano Cottage rooms are filled with the memories of a Hawaiian Monarchy.

tos and art reminiscent of Princess Kaiulani's Hawaii.

The comforts that you'll find at Carson's Volcano Cottage will delight you.

But wait until breakfast!!! Every morning is a treat with Tom and Brenda's breakfast served in your room. The popular menu includes items as these: Kona coffee, teas and tropical juices, fresh fruit platters, bagels & lox with cream cheese and capers.

Carson's Volcano Cottage - Rich in island hospitality, comfort, and beauty... striving to make our island visitors happy, one guest at a time.

HALE MALUHIA BED & BREAKFAST: Innkeepers: Ken & Ann Smith. 76-770 Hualalai Rd., Kailua-Kona, HI 96740, (808) 329-1123, 1-800-559-6627 Rates: \$55 - \$225 Notes: Private baths, hot tub.

On the way up to Holualoa at the 900' elevation, 1.5 miles above highway 11, when the banana trees come into view you will find an off the beaten path, very special bed and breakfast inn, Hale Maluhia (house of peace). Hale Maluhia provides hospitality, seclusion and comfort for visitors after a day of sight seeing in the Kona/Holualoa Village area. This one-acre estate was lovingly designed by the owners, Ken & Ann Smith as a Hawaiian Plantation-style home for four generations of family. The home is really a 16 room compound in four different buildings allowing for an unusual amount of privacy. The spa is made from stone and ceramic tile with a Japanese feeling of openness and peace, the spa is central to the setting of koi ponds, stream and waterfalls.

Hale Maluhia is just minutes from diving, snorkeling, and sailing cruises, hunting in season, and even skiing on the beautiful slopes of Mauna Kea each winter. Easy access to the Kona Airport (Ke-aholi).

The estate includes an 800 square foot honeymoon cottage with a private jacuzzi. Two, two room suites, two large bedrooms with private baths and two bed rooms with a shared bath. The rooms contain Victorian era and wicker furniture with over stuffed sofas. Oriental rugs, large lanais, game room and a library also exists on the estate.

Breakfast includes fresh island fruit, daily baked breads, pastries, granola and other cereals, cinnamon breads, fruit juices, teas and 100% pure Kona Coffee.

You will find Hale Maluhia to be an excellent starting point for exploring the Big Island. For reservations or a free brochure call 1-800-559-6627. Experience old Hawaii at its very best.



A quiet lanai awaits your Hawaiian breakfast at Hale Maluhia Bed & Breakfast.



Artist Sandra Gray hand painting a piece of wearable art.

Coffee Talk on Local Art

Sandra Gray from North Kohala's Wo On Gallery

Any first, or lasting, impression of the Wo On Gallery in North Kohala will prominently feature the fabric art of Sandra Gray. Her silk and cotton scarves, shawls, poncho, and T-shirts fill the gallery with life and color. The titles of each of these one-of-a-kind pieces also engage the viewer intellectually, drawing her/him into the artist's experience of the work.

Little did Sandy guess that this would be the case when she took her first silk-painting class with Elizabeth Douris, also of North Kohala, back in 1989. Elizabeth turned her onto "shibori," a traditional style and technique of Japanese indigo tie-dye. A four-day shibori workshop soon followed at Tamari in Honolulu, with a sensei who had come here from Japan to escape the restrictions of traditional form.

More workshops followed, with Ana Lisa Headstrom at

the Art Academy in Honolulu and with Yael Tomono in Hilo, plus more classes at Tamari, including the chemistry of dyes.

Major artistic influences on her work would have to include Tomono, Randy Takaki, artist Steve Irvine, and writing teacher Garrett Hongo.

The result is a consistently rich and fresh body of work by Sandy, combining painting, dying, and tie-dying into unique and beautiful artistic statements, reflecting much from her life on the Big Island and the inner life of her mind and soul.

Her work, ranging in mood from whimsical to philosophical, is currently available at the Wo On Gallery in North Kohala, the Volcano Arts Center, and the East Hawaii Cultural Center in Hilo.



Two of Sandra Gray's "shibori" t-shirts. (Shibori is a traditional style and technique of Japanese indigo tie-dye.)

Edward's
AT THE TERRACE

Restaurant
La Bourgogne

CAFE
Pesto

Big Island Dining Experiences



KILAUEA LODGE

DON'S Family DELI



HILO

CAFE PESTO: (pgs. 13) Cafe Pesto has extended its service to the historic S. Hata Building in downtown Hilo. While the cuisine remains similar to what is offered at the original Kawaihau location diners can experience the tastes of wood fired pizzas and local dishes such as fresh fish and lomi lomi served on a bed of noodles. Organic produce and edible flowers complement the reasonably priced food which is always "an adventure in taste".

KOHALA / HAMAKUA

BAMBOO RESTAURANT & GALLERY: (pg. 24) At Bamboo you will find warm "Old Hawaii", featuring fine Hawaiian Regional Cuisine and "Local Style" food. Located in a fully restored historic building, Bamboo is a tropical restaurant, with "the best atmosphere on the island!" Here, local people gather in the deep old wicker chairs for passion fruit margaritas, Hawaiian entertainment, and Sunday Brunch. Try to catch one of their "theme nights" for a truly special evening. Browse and find a gift in the Kohala Koa Gallery of fine art and Pacific handcrafts. Open for Lunch & Dinner: Tuesday- Saturday till 9:30pm. Sunday brunch, 9-2:30pm. Closed Mondays.

CAFE PESTO: (pg. 23) Cafe Pesto has earned a reputation as an innovator of provocative island cuisine specializing in Pacific rim pizzas, pastas, salads and seafood served in a setting of casual elegance. The menu draws upon fresh organic produce from Puna and edible flowers and herbs from Hualalai and Volcano. With locations in downtown Hilo and south Kohala's Kawaihau, Cafe Pesto is reasonably priced and always, "an adventure in taste".

DON'S FAMILY DELI: (pg. 25) Just 6 miles before the end of the road there is an oasis of food and drink. A variety of meats, cheeses and breads. That's what makes it a deli. Also bagels, cream cheese, and lox and cappuccino make it a good place to sit and talk. Our garden room faces the King's statue across the road. To round out the menu we cater to vegetarians with quiche, enchiladas and lasagnes. We always have two soups, fresh carrot juice and our famous fruit smoothies and remember that everything travels well; to the end of the road at Pololu Valley lookout and the beach parks near by. Deserts, salads and dip ice cream also. Plenty of parking and always a refreshing breeze.

SIMPLY NATURAL: (pg. 14) Located in Honokaa town, Simply Natural combines a flare for fun and nostalgia as guests are greeted daily by Sharon Betthausen, owner and operator of this one woman show. The ice cream parlor/deli/soda fountain delivers one of the more unique dining experiences you will ever find. Sharon's breakfasts include such fixings as taro pancakes while lunch serves up selections of

homemade sandwiches made while you wait. If you decide not to eat you should at least try a Simply Natural old fashion ice cream soda or a scoop of Hilo ice cream. The spinning stools at the counter and the attached game room conjure up childhood memories to make Simply Natural a choice spot for both young and old.

WAIMEA COFFEE AND COMPANY: (pg. 19) Located at Parker Square on Hwy. 19 as you drive through beautiful upcountry Waimea. Sample the finest world-class coffees, cappuccino and gourmet treats at this friendly oasis. David Ellis and his cheerful staff will make you feel at home at this cozy country cafe- a great place to stop for lunch or for a welcome break in your day. Enjoy a variety of estate-grown pure Kona coffee as well as gourmet coffees from around the world, and take advantage of their easy mail order service to send coffee home. A perfect way to savor the relaxed pace and quality lifestyle of this beautiful area.

KONA

EDWARD'S AT THE TERRACE: (pg. 26) Edward's at the Terrace is Kona's only ocean front restaurant featuring the cuisine of the Mediterranean region of Europe. Edward's is located on the grounds of the Kanaloa Condominiums in Keauhou, and is open for breakfast, lunch and dinner from Tuesday thru Sunday. Let the soft crash of the waves soothe your mind as you dine on such things as couscous grilled shrimp and babaganous, or robust fisherman's soup served under a puff pastry crust. For lunch you may select an old familiar favorite such as salade nicoise topped with fresh grilled tuna or one of the best burgers you'll have anywhere. Breakfast offers such treats as apple spice sausage patties and a family special of eggs and bacon.

LA BOURGOGNE FRENCH RESTAURANT: (pg. 40) Located just 3 miles south of Kailua-Kona this small, intimate restaurant makes you think you might be at a delightful French Country Inn. Chef/Owner Ron Gallaher features the simple, flavorful food of the Burgundy Region of France created from the freshest of local ingredients. In addition, La Bourgogne's wine list includes quality selections from Burgundy and California at modest prices. Open Monday through Saturday from 5:30pm to 10:00 pm. Reservations recommended at 329-6711. All major credit cards accepted.

WAKEFIELD GARDENS & RESTAURANT: (pg. 32) For that old time feeling provoking life-long memories visit Wakefield Gardens & Restaurant. Enjoy relaxed charm while dining amid the personal, friendly, uncrowded, fragrant botanical atmosphere. World-wide letters relate our best features. Aloha Spirit- a warm welcome giving an "at home" feeling; Old Time Hawaiian Music, Fresh - Clean -

Wholesome Food; Something for everyone and our Strawberry Papaya filled with special tuna salad received 4 stars in Gourmet Magazine; Kona hot or iced coffee, Kids cheese burgers, vegetarian fare, homemade macadamia nut pies, reasonable prices. Free botanical garden self-guided tours. Open 11am - 3pm. Spread the word - the magic of romantic Hawaii still exists. Aloha!

PUNA

NUANG MAI THAI CUISINE: (pg. 10) Looking for authentic Thai cuisine? Look no further because there is a gem called Nuang Mai in historic Pahoa village that is about as close to the tastes of Thailand you will ever get without actually landing in Asia. From Cheng Mai, Bangkok and Phuket styles of cooking guests are able to choose from numerous stirfries and curries as well as rice and noodle dishes that include many vegetarian dishes. Among the favorites are the Evil Jungle Chicken and Cashew Chicken dishes as well as the red, green and yellow curries. Also very popular are the non-fried vegetarian spring rolls that are made daily. Dessert at Nuang Mai brings homemade tapioca pudding, which owner Alisa Wade first learned to make back on her Thailand farm where the family grew the tapioca plant. Make sure a meal at Nuang Mai is included in your stay if you are planning on visiting the village of Pahoa.

THE GODMOTHER - RISTORANTE ITALIANO: (pg. 10) A pleasant surprise awaits you. Located amid romantic surroundings on Main Street in Historic Pahoa Village, the large menu features delectable pasta selections and traditional New York-style family recipes. With indoor-outdoor dining, the Godmother is serving breakfast and lunch from 8am until 3 pm and dinner from 5 pm until 11 every day. Stop by, meet the family, enjoy the ambiance and savor the food. Daily specials, a full bar and a friendly staff combine to create the perfect occasion. Major credit cards welcome. Ciao Bella!

VOLCANO

KILAUEA LODGE: (pg. 7) Well known for Chef/Owner Albert Jeyte's Continental-local cuisine, Kilauea Lodge is located in the cool sub-alpine rain forest region of Volcano, the misty region encourages a hearty appetite and Chef Albert, whose menu favors fish and fowl, does not disappoint. An inspired wine list, helpful staff, Hawaiian decor, and historic Fireplace of Friendship, make Kilauea Lodge a memorable experience. Open nightly 5:30-9:00pm. Reservations recommended. Located one mile Hilo-side of Volcanoes National Park.

The Godmother
Ristorante Italiano

WAKEFIELD GARDENS & RESTAURANT

bamboo



Nuang Mai
Thai Kitchen

February On The Big Island

- 1-28 **BOSCO THE AMAZING ONE MAN BAND LIVE!**
Free! Live music outside at the Kona Inn Shopping Village. Also, free reviews of Bosco's new Big Island music video "Hangin' With Bosco! Hawaii." The Video is filled with music, comedy, and the awesome beauty of Hawaii- by land, sea, and air! Bring your dancin' shoes and have some fun. Wednesday through Saturdays at 7pm. Kona Inn Shopping Village, Alii Drive, Kailua-Kona. 322-6604 for more info.
- 1-28 **KOHALA COMMUNITY ARTS PROGRAM**
Host of classes including theatre, ballet, movement explorations, oriental dance, folk dancing, Hawaiian Lei making, hula lessons, Japanese language lessons, conversational French, drawing, watercolor, oil and acrylic painting, minute art, tai chi, common sense, gymnastics and shamanic journeying will all be offered. Call 889-0421 for more info.
- 3,4 **CHEATERS**
An adult comedy of couples and coincidences. Live at the Aloha Theater, Kainaliu, 8pm. 322-9924.
- 4 **BEGINNING POLYMER CLAY FOR ADULTS**
Audrey Forcier teaches a full range of techniques for working polymer clay. Planning and assembly of wearable art, properties of various brands of polymer clay, and where to find supplies. 10am to 4pm, call the Volcano Art Center at 967-8222 for more info.
- 4-26 **PETROGLYPHS AS AN ART FORM**
From February 4-26, 1995, Volcano Art Center will host an exciting photography exhibit entitled "Kilauea: Past and Present" by Harry Jefferson. Jefferson presents an impressive grouping of realistic photographs of petroglyphs representing the past and flora of the Kilauea region representing the present. His collection includes over 40,000 images and selections from these will be exhibited. Call 967-8222 for more info.
- 5 **CHEATERS**
4pm matinee at the Aloha Theater, Kainaliu, 322-9924.
- 5 **POLYMER CLAY FOR KIDS**
with Audrey Forcier. Kids learn the basics of molding and firing polymer clay, how to assemble jewelry and ornaments, and safety precautions. Each child will take home at least one finished piece. 11am to 3pm. Call the Volcano Art Center at 967-8222 for more info.
- 4-28 **COLLECTIONS AND RECOLLECTIONS by the Doll Collectors of Hawaii**
Upstairs Gallery, Walloa Center, Hilo, 933-4360.
- 4-28 **PHOTOGRAPHY BY CLIFF PANIS**
award winning Big Island artist will entertain you with select photography. Walloa Center, Mini Fountain Gallery, Hilo, 933-4360.
- 8-3/15 **IN THE SPOTLIGHT - 'BROADWAY BABIES' ENCORE**
If you ever wondered what it felt like to perform up on stage, or wished you could, now is the time to sign up for a fun-filled six weeks with three talented instructors. Vocal/instrumental coach K. David Coe, choreographer/dancer Camille Sigmund, and director/actress Judi Floyd will focus on developing singing, dancing and acting skills specifically for musical theater. The final will be a showcase performance for the public. 6:30pm to 8:30pm, call the Volcano Art Center at 967-8222 for more info.
- 10-12 **THE PASSIONS OF PAHOA LIVE AT THE AKEBONO**
Written and directed by Pat Rocco Hawaii's oldest theatre will present a hometown comedy production. Local talent from the Puna district will play the roles in a play that has been described as "tailor-made." Showtime is 7:30pm. Call 965-9943 or 965-8122 for more info.
- 11 **9th ANNUAL BIG ISLAND MAGIC SPECTACULAR**
is happening for two shows only at the Aloha Theater in Kainaliu. The magic show will host the talents of both local and traveling magicians. Fund raiser for the American Cancer Society. 2:30pm and 7pm. Call 323-9707 for more information. Tickets at the door.
- 11 **FIRST EVER MS. BIG ISLAND TUTU PAGEANT**
4pm at Hilo's Hawaii Naniloa Hotel's Crown Room. The contestants must be 40 or over, have at least one true blood grandchild and be a Big Island Resident. The Pageant will award prizes, trophies and flowers. For more information call 968-8439.
- 11,12 **ADVANCED POLYMER CLAY FOR ADULTS**
with Audrey Forcier. Experienced polymer clay practitioners learn the secrets of how to form complex "killer" canes; a rose cane notable for its subtle shadings, and a face cane. Mastering these two canes opens up endless possibilities for polymer clay artists. 10am to 4pm. Call the Volcano Art Center at 967-8222 for more info.
- 14 **AFTER DARK IN THE PARK PRESENTS: "The Hawai'i - Mars Connection"**
Hawaii Volcanoes National Park is the site for field testing of a robot rover designed to explore Mars. What unique aspects of our volcanic terrain mimic conditions on the Red Planet? How will scientists and engineers of the test team simulate a robotic expedition to another world? Join Laszlo Keszthelyi from UH-Manoa and Darryl Rasmussen from the NASA Ames Research Center for an in-depth look at the Mars rover test program in Hawai'i. This program is presented in co-operation with the Planetary Society. Kilauea Visitor Center Auditorium, 7:00pm, Volcanoes National Park, 967-7184.
- 16 **HAWAIIAN QUILTING CLASS**
with Hilo born quiltmaker Linda Smith. Students will make pillows, using traditional Hawaiian patterns and methods of hand stitching. 6:30pm to 8:30pm. Call the Volcano Art Center at 967-8222 for more info.
- 17-19 **THE PASSIONS OF PAHOA LIVE AT THE AKEBONO**
Written and directed by Pat Rocco Hawaii's oldest theatre will present a hometown comedy production. Local talent from the Puna district will play the roles in a play that has been described as "tailor-made." Showtime is 7:30pm. Call 965-9943 or 965-8122 for more info.
- 21 **AFTER DARK IN THE PARK PRESENTS: "The Mars Rover Tests: What Happened and What Comes Next?"**
A remote controlled Mars rover is being field-tested at Hawai'i Volcanoes National Park. NASA Ames Research Center's Darryl Rasmussen, Hawai'i Site Rover Test Manager, will report on the current findings of the Mars rover team. He will offer a look at the Russian-built rover in action via a stereo 3-D video presentation filmed during the previous week. In addition, George Powell of the Jet Propulsion Laboratory and the Planetary Society will preview the exciting future of Mars explorations planned by spacefaring nations worldwide. This program is presented in co-operation with the Planetary Society. Kilauea Visitor Center Auditorium, 7:00pm, Volcanoes National Park, 967-7184.
- 25 **PAHOA HO'O LEI - LEI FESTIVAL**
The second annual festival is being celebrated in Pahoa on Saturday, February 25th. The Festival includes Circus Arts performances and workshops, a Talent Show, Arts and Crafts booths, rides and games plus lots of music featuring several of the top local bands. This is a community festival offering lots of fun for the whole family. For more information call 965-8756.
- 28 **AFTER DARK IN THE PARK PRESENTS: "The Life Cycle of the Ohi'a and its Role in Hawai'i's Unique Rain Forests"**
The rain forests of Hawaii are distinctly different from those in other tropical regions of the world and the ohi'a tree plays a key role in these unique ecosystems. Dieter Mueller-Dombois, Emeritus Professor of Botany at UH-Manoa, has studied the ohi'a and its dynamics in the forests of Hawaii Volcanoes National Park since 1963. Editor of Island Ecosystems and former director of the International Biological Program, Mueller-Dombois will present a slide program on the ohi'a lehua, Hawaii Island's signature tree. Kilauea Visitor Center Auditorium, 7:00pm, Volcanoes National Park, 967-7184.



Coffee Mill and Farm Tour



Open Daily 9am to 5pm (FREE)



See first hand how coffee is farmed and milled in Kona and view our historic Kona coffee photo display as well as a collection of 18th & 19th century Hawaiian prints. We specialize in only 100% certified Kona™ coffee and are a complete processing & roasting facility. And, stop at our visitor center to purchase some 100% Kona™ coffee.

Spectacular Views of Kealakekua Bay from the Bay View Gazebo!

(Call ahead for special group tours)



For Mail Orders
Call or Write:

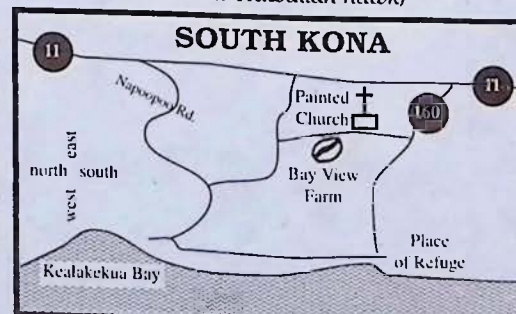
1-800-662-5880

(808) 328-9658

Fax orders: **328-8693**

**P.O. Box 680, Honaunau,
HAWAII 96726**

As the io flies...
(io means Hawaiian hawk)



...Bay View is located 1/2 mile from Painted Church and 2 miles from Place of Refuge

Daily Farm Tours

Langenstein Farm

SUN DRIED
BEANS

HAND PICKED
TO ROAST



J. Langenstein

Come and visit our family owned Kona Coffee Estate where coffee is hand picked and milled the old fashioned way. Our estate certified 100% Kona™ coffee beans are sundried and air roasted to perfection. We personally guarantee the pure and fresh taste of Kona in every bag of coffee we sell.

Open Daily (You may call ahead for an appointment)
Located between mile markers 104 & 105 on Hwy. 11
(just north of Honaunau State Baseyard - Look for sign)

808-328-8356

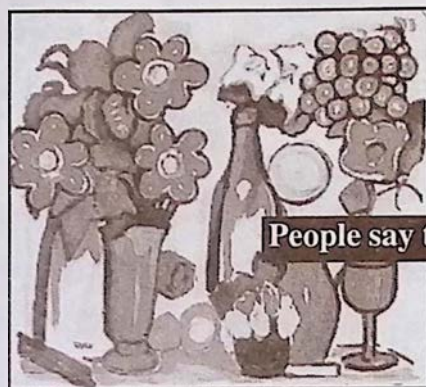
84-4956 Mamalahoa Hwy., Capt. Cook, HI 96704

Restaurant La Bourgogne

(LAH BOR-GOAN-YUH)
CUISINE FRANCAISE

"...the classic French cuisine at this wonderful, intimate place may be the best in Kona."

THE ZAGAT RESTAURANT SURVEY



"La Bourgogne is a must!!"
COFFEE TIMES

People say the nicest things about us.

"Classic French cooking at its best keep the 10 tables filled six nights a week.
Reservations advised (to be safe, call a couple of days in advance)."

FODOR'S '95

Open 6:00 to 10pm, Monday through Saturday
Located Just 3 miles south of Kailua-Kona on Hwy. 11

RESERVATIONS RECOMMENDED

329-6711

Destination Waipio Valley

*Mile long black sand beach with
waterfalls and horseback riding*

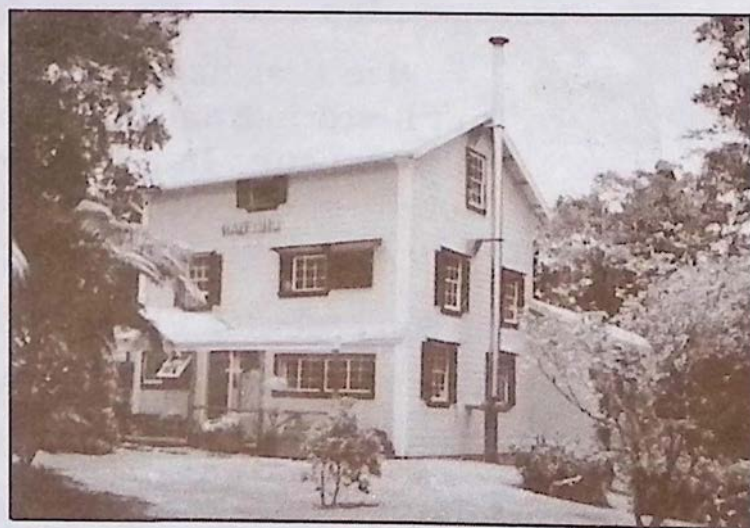
Waipio Wayside B&B Inn

Retreat of artist, writers and the adventuresome.
Come relax and enjoy old Hawaii.

775-0275 or 1-800-833-8849



MY ISLAND BED & BREAKFAST AT VOLCANO



Featuring...

- ~All the macadamia nuts you can eat~
- ~A variety of rooms at a range of prices~
- ~We serve a "stuff-yourself" breakfast~
- ~Located on a 5-acre estate full of flower gardens~
- ~Personalized touring information for East Hawaii~
- ~Come spend time in our 108-year old historic house~

967-7216 OR 967-7110

(See our listing in B&B section)