

The Alternative Visitor's Guide

FREE

BULK RATE  
U.S. POSTAGE  
PAID  
KAILUA-KONA, HI  
PERMIT NO.  
40-125



# Coffee Times

October 1994 / Big Island of Hawaii / Volume 2 Edition 7

*State of the Bean Address for 1994*



also inside... things of a lighter nature

# Advertisers:

## ART GALLERIES

Ackerman Galleries	889-5971	P. 25
Cook's Discoveries	885-3633	P. 19
Cottage Gallery	328-9392	P. 32
Upcountry Connection	885-0623	P. 18
Volcano Art Center	967-8222	P. 8
Wo On Gallery	889-5002	P. 24
Woodcarver's Corner	985-8518	P. 9

## COFFEE FARMS

Bay View Farm & Mill	328-9865	P. 39
Langenstein Farm	328-9486	P. 40
Old Hawaiian Coffee	328-2277	P. 3

## COFFEE RETAILERS AND CAFES

Bad Ass Coffee Co.	1-800-338-7139	322-2646	P. 29
Holuakoa Cafe		322-CAFE	P. 30
Kohala Coffee Mill		889-5577	P. 23
Waimea Coffee & Co		885-4472	P. 19

## DINING

Aloha Cafe (International, Mexican...)		322-3383	P. 28
Bamboo (Pacific Rim, Thai.)		889-5555	P. 24
Cafe Pesto (Pacific Rim Italian)	Kawaihae 882-1071	Hilo 969-6640	P. 13, 23
Don's Deli (International)		889-5822	P. 25
Edwards at the Terrace (Mediterranean Classics)		322-1434	P. 26
Jolene's Kau Kau Korner (Cafe)		775-9498	P. 14
Jill's Country Kitchen (Deli, Bakery)		329-6010	P. 16
La Bourgogne (French)		329-6711	P. 40
Luquin's Mexican Restaurant (Mexican)		965-9990	P. 10
Mamane St. Bakery		775-9478	P. 14
Mateo's Pizza		775-0944	P. 14
Nuang Mai (Thai Kitchen)		965-8186	P. 10
Sibu Cafe (Indonesian & Southeast Asian)		329-1112	P. 27
The Godmother (Italian)		965-0055	P. 10
Wakefield Gardens (Home Cooked)		328-9930	P. 32

## LODGING

Adrienne's B&B and Casa Del Sol		326-2272	P. 26
Bamboo House		965-9340	P. 10
Becky's B&B		929-9690	P. 5
Carson's Volcano Cottages		967-7683	P. 8
Chalet Kilauea		967-7786	P. 9
Haili House Inn		969-7378	P. 40
Hale Kai B&B		935-6330	P. 13
Hale Maluhia B&B	1-800-559-6627	329-1123	P. 30
Hale Ohia Cottages		967-7986	P. 9
Holualoa Inn		324-1121	P. 16
Ho'onanea		328-9445	P. 33
Kealahou Bay Lodge		328-8019	P. 33
My Island B&B		967-7216	P. 40
Papaya's Plantation		965-7119	P. 10
The Village Inn		965-6444	P. 10
Waipio Ridge Vacation Rental		775-0603	P. 15
Waipio Wayside	1-800-833-8849	775-0275	P. 40
Wild Ginger Inn		935-5556	P. 13

## MUSEUMS

Kona Historical Society		323-3222	P. 33
-------------------------	--	----------	-------

## AIR, LAND AND OCEAN ADVENTURES

Atlantis Submarines (Submarine Adventure)		329-6626	P. 3
Blue Hawaiian Helicopters		961-5600	P. 12
Body Glove Snorkeling Cruise (Snorkeling Cruise)		326-7122	P. 3
Dan McSweeney Whale Watch		322-0028	P. 11
Impulse Charters (Sport Fishing)		325-7749	P. 26
Kona Kai Yak (Tours, Rentals, Sales)		326-2922	P. 27
Nautilus Submarine Experience (Underwater Reef Tours)		326-2003	P. 3
West Wind Sailing Charters		325-6471	P. 3

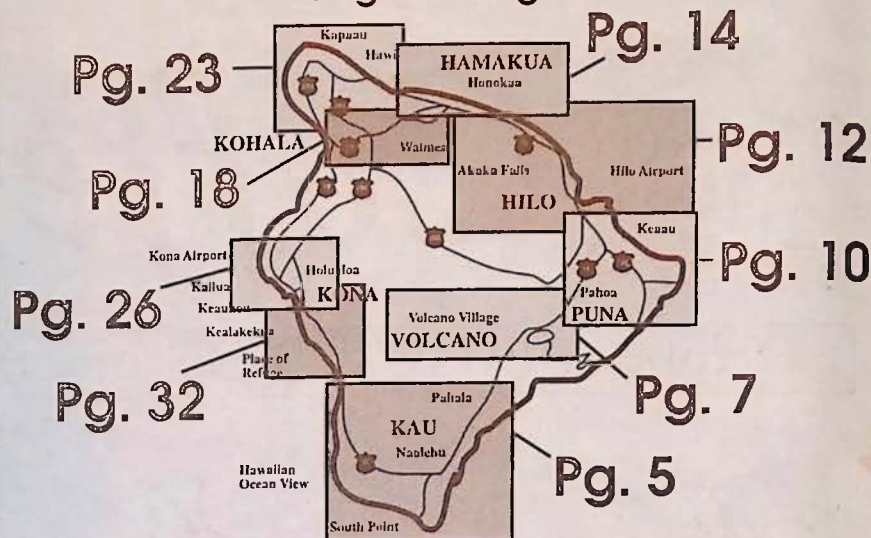
## SPECIALTY SHOPS

Antiques	Honokaa Trading Co.	775-0808	P. 14
Book Stores	Island Books	322-2006	P. 29
Clothing	As Hawi Turns	889-5023	P. 23
	Hawaiian Hemp Co.	965-8600	P. 10
	Princess Kaiulani	885-2177	P. 19
General Stores	Naalehu Fruit Stand	929-9009	P. 5
	Pahoa Natural Groceries	965-8322	P. 10
Builders	Island Log Homes	968-6633	P. 12
	Steel Buildings	324-4109	P. 16
Ice Cream	Simply Natural	775-0119	P. 14
	Tropical Dreams	889-0505	P. 24
Gardens	Akatsuka Orchid Garden	967-8234	P. 7
Mac Nut Factory	Hawaii Mac Nut Plantation	775-7201	P. 15
Photo Developing	One Hour Moto Photo	329-2080	P. 27
Publications	Ka'u Landing	929-8130	P. 5
Real Estate	A Real Estate Concern	322-3677	P. 29
	Kohala Pacific Realty	889-5181	P. 25
Spa Service	Querencia Spa	328-2569	P. 32

## THEATRES

Aloha Performing Arts Center	(see calendar)	322-9924	P. 28
Kona Market Place Cinemas		329-4488	P. 26
People's Theater		775-0000	P. 14

## Regional Pages



# COFFEE TIMES©

For calendar inserts, historical comments or TO RESERVE AD SPACE  
Call or write the publisher, Les Drent, at: (808) 326-7637  
P.O. BOX 1092 Captain Cook, Hawaii 96704

PRINTED ON RECYCLED PAPER BY COFFEE TIMES PRESS

For Mainland Subscriptions:  
Send \$50 for a lifetime subscription. Add \$10 if  
outside of USA. Mail to: Up Country Productions  
P.O. Box 1092 Captain Cook, HI 96704

# Read This ↓

UP COUNTRY is not the manufacturer, or an agent of the manufacturer, for the goods and services being advertised herein and therefore makes NO EXPRESS OR IMPLIED WARRANTY OF ANY KIND WITH RESPECT TO THOSE GOODS AND SERVICES. The publisher will not be responsible for typographical or printing errors, but will reprint without charge that portion of the ad in which the error occurs. Publisher accepts no responsibility for errors resulting from telephone insertions. Illustrations used herein are for design purposes only and do not necessarily depict the actual items offered by the advertisers. This publication may not be reproduced in whole or in part without the prior written consent of UP COUNTRY and reserves the right to edit, revise or refuse any advertisement.



# Old Hawaiian Coffee

COME TOUR OUR HISTORIC  
1870 COFFEE FARM

Take a **FREE** tour of our farm for the real story of how coffee is produced. We are located off Highway 11 in Honaunau, one tenth of a mile south of mile marker 105, just after the mailbox on the mauka side of the road.

"We'll take you from the tree to the roast."

*Misha Sperka (farmer/owner)*

## HIGH QUALITY MODERN COFFEE PULPING MILL

CERTIFIED ORGANIC  
H.B.G.A.

**(808) 328-2277**

84-5042 A Mamalahoa Hwy.,

Captain Cook, HI 96704

Specializing only in 100% pure estate grown  
Kona Coffee

# Coffee Times

HAWAII

WELCOME TO THE BIG ISLAND

READ IT, DRINK IT, LIVE IT!

**NAUTILUS II**  
SEMI SUBMERSIBLE

**\$5 Off**

Underwater Ride with this coupon

see page 3 **326-2003** expires 10/31/94

see page 21 **BADASS COFFEE CO.** expires 10/31/94

Buy 5 Pounds of Kona Coffee Get 1 **FREE** at our Kainaliu Roasting Room with this coupon (except prime grades)

expires 10/31/94 **KONA KAI-YAK** see page 27

**\$5.00 OFF**

**KAIYAK RENTAL OR TOUR**  
**326-2922**

see page 3 **BODY GLOVE** expires 10/31/94

**\$10 OFF ADULT COUPLE FARE** with this coupon

**326-7122**

see page 13 **WAIMEA COFFEE COMPANY** expires 10/31/94

for a welcome break in your day

**1.00 OFF** one pound of coffee or a **FREE** cup of our coffee of the day with this coupon. (with purchase)

885-4472 or 1-800-854-5662

See Page 23 **WAKEFIELD GARDENS & RESTAURANT** expires 10/31/94

**2 for 1 Papaya Boat Special** filled with tuna salad & herb dressing buy one get one free with this coupon

**328-9930**

**Holuakoa Cafe**

Free cup of 100% Kona Coffee with this coupon

see page 25 **322-CAFE** expires 10/31/94

located in Holualoa Town

**ONE HOUR MOTOPHOTO** expires 10/31/94

**FREE SET OF PRINTS** Receive a second set of prints for **FREE** with every roll of film processed with this coupon

**329-2080** see page 5

see page 30 **SUPPLY NATURAL** expires 10/31/94

**FREE ICE CREAM CONE** with purchase of deli sandwich and this coupon

expires 10/31/94 **Atlantis SUBMARINES** see page 3

**FREE ATLANTIS CAP** With purchase of dive, one cap per coupon. Departs hourly from King Kamehameha's Kona Beach Hotel on Alii Drive in Kailua-Kona. **329-6626**

**DON'S Family DELI**  
Kapaau Town by the King's statue

**10% OFF**

**ALL LUNCH ORDERS** over \$10 with this coupon

expires 10/31/94 **889-5822** see page 9

**SNORKEL AND SUN** **SNORKELING EQUIPMENT RENTAL \$14/week**

With this coupon only. Located at Sunset Plaza on Alii Drive in Kailua-Kona.

**329-3772** expires 10/31/94

**Coffee Times**

**FREE KONA™ COFFEE**

FOR A FREE SAMPLE OF OUR COFFEE

CALL OR WRITE: P.O. BOX 1092, CAPTAIN COOK, HI 96704 1-800-750-KONA (808) 326-7637

# Coffee Times

## HAWAII

WELCOME TO THE BIG ISLAND  
READ IT, DRINK IT, LIVE IT!

Coffee Times

see page 21 expires 10/31/94



Buy 5 Pounds of Kona Coffee Get 1 **FREE** at our Kainaliu Roasting Room with this coupon (except prime grades)

NAUTILUS II SEMI SUBMERSIBLE

**\$5 Off**

Underwater Ride with this coupon

see page 3 expires 10/31/94

326-2003

see page 3 expires 10/31/94

**BODY GLOVE**

**\$10 OFF ADULT COUPLE FARE**

with this coupon




326-7122

expires 10/31/94 see page 27



**\$5.00 OFF**

**KAIYAK RENTAL OR TOUR**

326-2922


See Page 23 expires 10/31/94



2 for 1 Papaya Boat Special filled with tuna salad & herb dressing buy one get one free with this coupon

**328-9930**

see page 13 expires 10/31/94



for a welcome break in your day

**1.00 OFF** one pound of coffee or a **FREE** cup of our coffee of the day with this coupon. (with purchase)

885-4472 or 1-800-854-5662

ONE HOUR MOTOPHOTO™ expires 10/31/94

**FREE SET OF PRINTS**

Receive a second set of prints for FREE with every roll of film processed with this coupon

329-2080

Holuakoa Cafe

Free cup of 100% Kona Coffee with this coupon

see page 25 expires 9/30/94

322-CAFE

located in Holualoa Town

expires 10/31/94 see page 3



**FREE ATLANTIS CAP**

With purchase of dive, one cap per coupon. Departs hourly from King Kamehameha's Kona Beach Hotel on Alii Drive in Kailua-Kona. 329-6626

see page 30 expires 10/31/94



**FREE ICE CREAM CONE** with purchase of deli sandwich and this coupon

SNORKEL AND SUN

SNORKELING EQUIPMENT RENTAL

**\$14/week**

With this coupon only. Located at Sunset Plaza on Alii Drive in Kailua-Kona.

**329-3772**

expires 10/31/94

DON'S Family DELI

Kapaau Town by the King's statue

**10% OFF**

ALL LUNCH ORDERS over \$10 with this coupon

expires 10/31/94 889-5822 see page 9

**HAWAII'S ONLY**

**Submarine Adventure**

Come descend into the ocean world with us as we explore 25 acres of Kona's natural coral reef and hundreds of tropical fish. Life under the Hawaiian ocean will fascinate you! Hourly dives daily Departing from King Kamehameha's Kona Beach Hotel on Alii Drive in Kailua-Kona.

**FREE ATLANTIS CAP**  
see our coupon

For reservations please call or see nearest activity desk.

**(808) 329-6626**



*West Wind Sailing Charters*

Private 41' Ketch  
Wet & Fun!

1/2 day, full day, overnight charters



**(808) 325-6471**

NAUTILUS II SEMI SUBMERSIBLE

**HAWAII'S SUBMARINE EXPERIENCE**

Enjoy Both Topside and Underwater Viewing in our Air-Conditioned, 58-Foot, 34-Passenger Coast Guard Approved Vessel. No Age Limit, Day and Night Cruises, Special Group Charters Available

**INTRODUCTORY PRICES**

ADULTS	\$34.95
CHILDREN	\$19.95

For reservations call or stop in at our shop. We are located across from the pier in Kailua-Kona



**326-2003**

Coffee Times

**FREE KONA™ COFFEE**

FOR A FREE SAMPLE OF OUR COFFEE

CALL OR WRITE: P.O. BOX 1092, CAPTAIN COOK, HI 96704 1-800-750-KONA (808) 326-7637

**BODY GLOVE**

**KONA'S PREMIUM SNORKEL CRUISE**

**SNORKEL • SCUBA • SNUBA**

- Snorkel Gear & Instruction
- Continental Breakfast
- Deli Buffet Lunch
- Flotation Water Toys
- Full Service Bar (no host)
- Water Slide




**326-7122**

# South Point: Land of Discovery

## Ka'u Region

The actual place where Polynesians landed will always remain a mystery, but it was likely somewhere near the southern tip of the Big Island. This area seems a probable place because their approach would be from the South where all of Polynesia lay. When sailing North, the Big Island would be the first island they would see, and South Point would be the nearest landfall. Aside from the logic of such a choice, there is archaeological evidence supporting the supposition of a landing near Ka Lae, as the Hawaiians call the most southern tip of the island of Hawaii.

Excavation of lava tubes, that were used as shelters, near Kaihiki and Waiahukuni, villages four miles Northwest of the Ka Lae, indicate people were using them by A.D. 750. There is other evidence that indicates people first were in the area as early as A.D. 200.

The cliff near South Point Park is a common mooring place for the modern day fishermen who find these waters a rich resource. From the precipice the drop is about forty feet to the ocean's surface, but the cliff base goes down another thirty feet below the surface of the water. Ladders, hung to make access to the boats easier, swing freely in the air just above the sea. The cliff is deeply undercut.

In the heat of the day the water looks inviting. It is so clear the bottom can be seen plainly. For some there might be a temptation to leap into the cool water, and climb back up the ladder. It looks inviting, but don't do it. A swift current runs along the shore. The flow will carry anyone in the water straight out to sea. It is called the Halaea Current, named for a chief who was carried off to his death.

One of South Point's most famous scenic spots is Mahana Beach, also called Green Sands Beach because it has a distinctive golden green color. Although none of the fragments in the sand are large enough for jewelry purposes, the beach is composed chiefly of peridot, a semiprecious gemstone.

These tiny green gems are a silicate, one of the many families of quartz, which cook out of the basaltic magma over time. (They are apparent as green flecks in the raw lava stones used to build the columns and walls of the Jagger Museum at Kilauea's Volcano National Park.) As lava reached the coast, ero-

sional forces, and the specific gravity of the stones, perhaps are responsible for the accumulation of such a large quantity of the granules that produced the green sand beach.

When looking at the severe landscape of the whole area it is hard to visualize what a delightful land it must have been about fifteen hundred years ago when people first lived there. They came to a lush land, but one with few food plants. Soon, in just a few seasons, the introduced food plants bloomed and produced their fruits. Over the centuries the land became one great garden. Hawaiians were not farmers, instead, they were the worlds greatest gardeners. The soil was never tilled by beasts or machines, but always by hand. In the mild climate, there was no need for an extensive annual harvest. Only the food needed for the day was gathered from the garden. Intimate working with the land made Hawaiians expert in how to get the most from a given plot of soil. Today the small villages of Pahala and Naalehu exist



Early copper engraving of a Hawaiian village made from a drawing by John Webber, circa 1776-1780.

near the sea in the southern district of Kau. The remote setting of these towns is supported by home cooked goodness and fresh local fruit at the Naalehu Fruit Stand and Becky's Bed and Breakfast, an affordable option for lodging. Its quaint setting is still only thirty minutes to Volcano Village if you are moving around the island. Kau Landing, the progressive local newspaper, focuses on the issues that affect the entire community of the Big Island can be found at numerous locations around the island. A subscription to Kau Landing allows visitors the opportunity to stay in touch with Big Island news.

**BECKY'S**  
**BED and BREAKFAST**  
 Southern Most Town in USA

Full Breakfast All You Can Eat


Phone or Fax: (808) 929-9690 Off Island: 1-800-235-1233

Rooms Comfortable, affordable, with cable TV, private bath, queen or two double beds. Rates \$38 and up with full breakfast. Children welcome. Close to: Black and Green Sand Beaches. Swim with the Turtles, Golf courses or Volcano Park. Or after a long day on the Island just relax in our Whirlpool Spa and Star gaze. Location is the most southern town in the USA on Hwy. 11.

**25% Off**  
 on 4 day stay or longer

From the Southernmost District of Hawai'i Island

**KA'U LANDING**

(808) 928-6449  P.O. Box 160, Pahala, Hawai'i 96777

*In-depth and ongoing coverage of the land, the people and the issues that affect the present and the future of our Big Island Communities.*

1 year (12 issues) \$12     Sample Copy \$1.50

Southernmost point in U.S.A.

# Naalehu Fruit Stand

*"A stop in good taste"*

Tropical Fruit Breads • Cookies • Pies • Giant Sub Sandwiches • Pizzas  
 • Garden Burgers • Hot Soups • Fresh Salads • Fresh Juices

It's the perfect rest stop on the way to Volcano!  
 Sundry and Souvenir items available  
 Free souvenir with purchase  
 P.O. Box 31 Naalehu, HI 96722 (808) 929-9009

**Try Our Macadamia Nut Pie!**

**Open Daily at 9 am on Hwy 11**

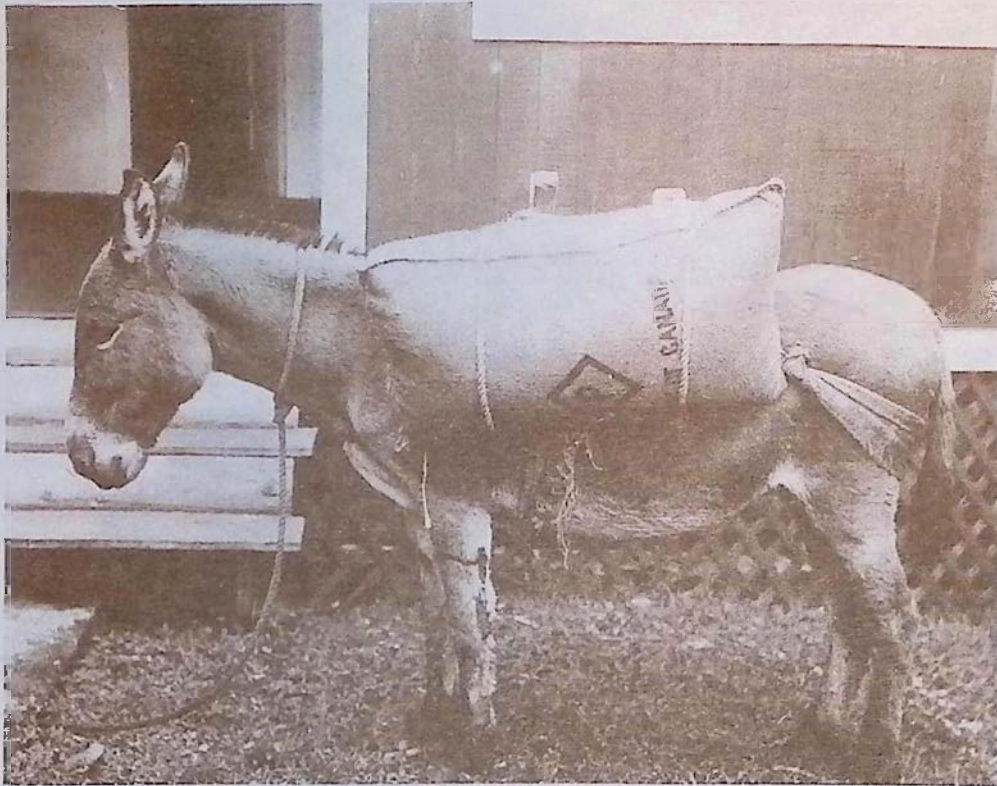
# Coffee Times

## 1994 State of the Bean Address

The sweet smell of freshly pulped coffee cherry stagnates in the morning air as coffee shacks of decrepit weathered wood and their patchwork of tin roofs sit low in the shade of tropical foliage. Woodrose creeps in the foreground, up crooked telephone poles and out across weeping lines. Along the mountain side are farmers hidden in groves of coffee, their fingers rapidly plucking the cherries from a twisted and gnarled system of branches. A bursting autumn sun begins to shed its tropical light over the countryside. Connecting the steep passages to the coffee farms is Mamalahoa Highway, a nearly two lane bumpy mountain road that winds its way through the districts of North and South Kona. The road was first built

as a foot path by ancient Hawaiians to travel the mountain route around the island and revised later in Kona for donkey and horse travel before being widened for the transportation of coffee by jeep.

To understand why and how coffee grows the way it does in Kona you have to allow your thoughts for a moment to be consumed in the environment that it grows in. What does this mean? Well, to begin, picture what the weather looks like on your average summer day in coffee country. It begins with a clear blue sunny morning before clouding over at noon to create a greenhouse like effect that follows with a light shower around mid afternoon. The day finishes off with a brief exodus of light including an orange and hazy sunset around dusk. Throw in some fair weathered humidity and a high air moisture content that has the power to make every piece of clothing, if not often used and washed weekly, thicken with mildew. And so you begin to understand the climate of Kona coffee country. This weather pattern holds true more often than not in the summer months of longer daylight but is not uncommon in the winter months when the upward growth of vegetation slows and browns a bit due to a lessening of rain. With this endless summer, so to speak, winter and summer temperatures maintain a mellow equilib-



rium between the dry arid heat of Kailua and the snow capped tops of Hawaii's two largest mountains, Mauna Loa (13,679') and Mauna Kea (13,796). Low temperatures in the coffee belt hardly ever drop below fifty degrees Fahrenheit. In the dead of winter and as you go up over the coffee belt, just above the three to four thousand foot mark in elevation, it is not uncommon to see or smell ohia smoke coming from someone's wood furnace.

How are you doing now? With this picture in mind imagine the descendants of age-old coffee trees with outstretched roots in the porous and rocky mountain slopes consisting only of lava rock and a thin layer of dark decaying acidic soil. The first coffee seedlings were planted in Kona in 1828, thanks to reverend Samuel Ruggles, who indirectly acquired thirty or so cuttings from coffee trees grown in Brazil. This early variety of coffee came to be known as "Kanaka Koppe", or Hawaiian Coffee, and is still prevalent throughout Kona today. Later coffee introduced at the end of the nineteenth century was of the Guatemalan strain. This strain of coffee came to be known as "Meliken Koppe", or American Coffee, and was first introduced by Albert Horner from Hamakua, a northeast region of the Big Is-

land. The Meliken Koppe became the choice strain in planting and now constitutes the major variety of coffee trees found in Kona today. To get a better idea of the mystique that surrounds Kona coffee we trace its roots even further back in history to learn that this strain first originated in Ethiopia, where it grew wild on the high plateaus. It is believed that coffee was first discovered by tribal goat herders that first used the raw but sweet coffee cherry to enhance their strength and endurance during times of hard work or struggle. The neighboring Persians, who upon raiding Ethiopia, brought back the coffee and started planting on the southern tip of the Arabian Pen-

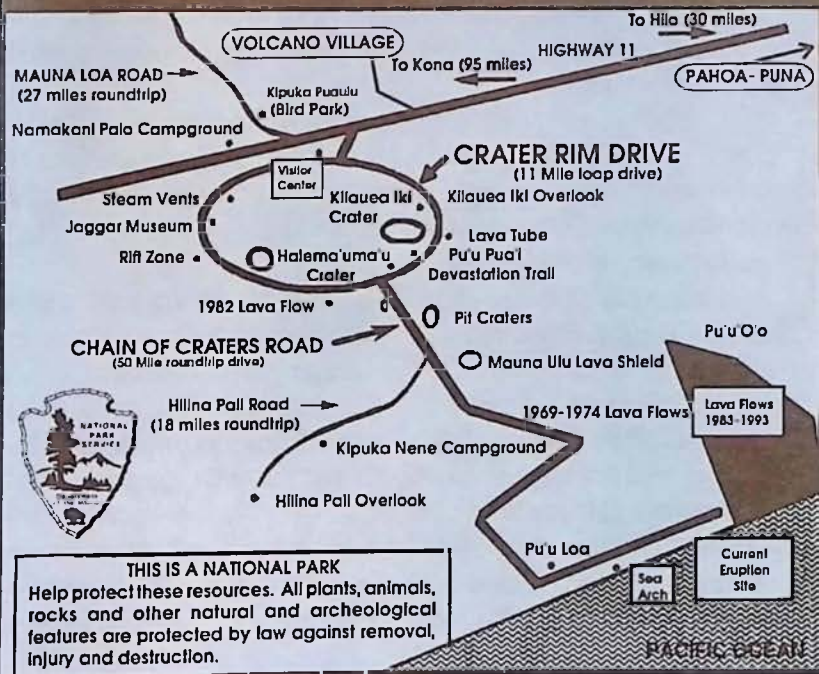
insula. This was the first cultivation of coffee. Around 1,000 AD, these Persians began brewing their coffee into a drink, *coffea arabica*, making its consumption a daily part of their culture. Thus the beginning of the drink we now know as coffee. Sultans of the land did not allow the magical coffee beans to be taken off their lands, but colonizers, missionaries and merchant traders found ways to smuggle the beans out of their kingdoms. These events marked the beginning of numerous adventures of coffee contraband staged throughout history.

In 1683 treasured sacks of Arabian coffee beans were left outside the gates of Vienna by a fleeing Turkish army whose attempts to conquer the city failed. Subsequently, Vienna's first coffee house, *The Blue Bottle*, opened in that same year soon to be followed by many others all across Europe. The arabica coffee beans found their way across the Atlantic ocean by way of the Jesuits who were often travelling to South America by

*continued on page 17*

Cover photo: Woman sorting green coffee. circa 1920  
Above photo: "Kona Nightingale" or donkey used to transport coffee in Kona. circa 1950's. Photos courtesy of the Kona Historical Society.

# Volcano Region Information



Volcanic eruption at Volcanoes National Park, Hawaii photo by Dorian Weisel

Volcanoes National Park has one entrance, off Route 11, 30 miles south from Hilo or 95 miles east from Kona. The park is open 24 hours a day all year round and requires a \$5.00 entrance fee per vehicle which is valid for 7 consecutive days. The hiker/bicyclist/bus passenger fee for people over 16 and under 62 is \$3.00.

When you enter the park during daytime hours you will receive a park brochure at the entrance station. If you enter the park after hours you may pick up the brochure at the Kilauea Visitor Center which is located a quarter mile from the entrance on Crater Rim Drive. The visitor center is open from 7:45 a.m. to 5:00 p.m. daily.

cont. on pg. 8

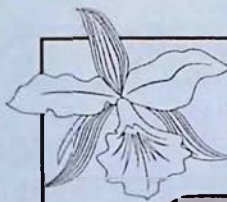
Twelve Romantic Rooms ~  
 Fabulous Fireside Dining Nightly 5:30 - 9:00 p.m.



## KILAUEA LODGE

...only minutes from Volcanoes National Park

VOLCANO VILLAGE ~ HAWAII ISLAND ~ (808) 967-7366



## Akatsuka Orchid GARDENS

### FREE GARDEN TOUR

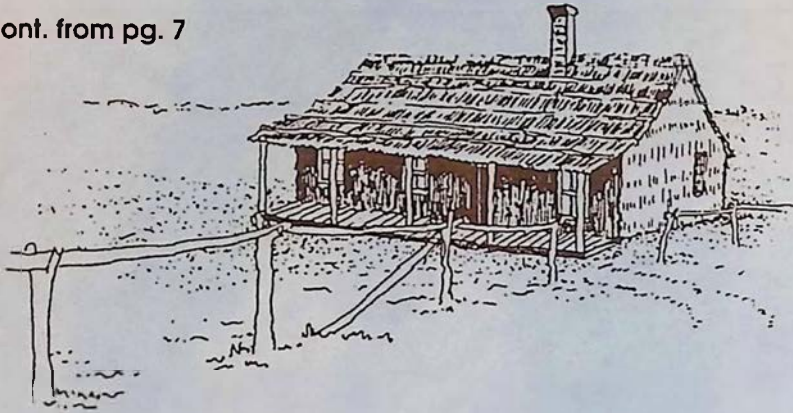
Wander in awe through our covered garden of exotic orchids and island plants then help your self to a FREE orchid blossom. We feature Certified Hawaiian orchid plants, cut flowers & anthuriums. Take them home or we'll ship them for you!

LOCATED ON HWY. 11

22 1/2 MILES FROM HILO

(808) 967-7660 P.O. Box 220, Volcano, HI 96785

cont. from pg. 7



## The Original Volcano House,

Now the Volcano Art Center at Volcanoes National Park.

Visitors are encouraged to take the time to carefully read the park regulations and guidelines. The volcano fumes that exist in the park may create a health hazard for pregnant women, infants and people with heart or respira-



Miltonia

tory problems. People at risk should avoid stopping at the Sulphur Banks, Halema'uma'u Crater and other areas where volcanic fumes are present.

Overnight trips in the park require a backcountry permit that can be obtained at no charge at the Kilauea Visitor Center.

Once inside the park enjoy the 25-minute movie on

eruptions shown hourly at the visitor's center. Other attractions are The Thomas A. Jaggar Museum three miles inside the park along Crater Rim Drive, The Volcano House, Thurston Lava Tube and scenic vistas. Depending on the timing of your visit you might have a chance to see the volcano erupting. A 45 minute drive to the end of Chain of Craters Road and a short hike will get you to the most recent lava flow area. The new coastline is unstable and can collapse into the sea at anytime without warning. Obey all park signs. Do not enter any closed areas. The park also offers many other hiking opportunities which are mapped out in the park brochure.

Before leaving you won't want to miss The Volcano Art Center, adjacent to the visitor center. The Art Center hosts the works of some of Hawaii's finest artists. The Center is also responsible for many of the art, cultural, environmental, and community activities happening in the park. The dates and times of these activities are listed in the Coffee Times calendar



Cattleya

A reminder to drive slowly and carefully while touring the park as it will help to protect Hawaii's endangered state bird, the nene.

Lodging, gas, camping supplies and dining all can be found in Volcano Village just a short drive from the park. When in the village stop by Wood Carver's Corner. This cozy shop is filled with wood arts from around the world including Native American and Hawaiian crafts.

Because of the remote location of the volcano, the numerous Bed & Breakfasts existing in the region are a favorite choice among visitors staying in Volcano. A complete listing of Volcano B & B's can be seen on pages 34 & 35 of Coffee Times. A few particular favorites are My Island Bed and Breakfast, Carson's Volcano Cottages, Charet Kilauea and Hale Ohia Cottages. If you are looking for seclusion, Carson's Volcano Cottages are tucked away in the region's rainforest and offers guests the most in privacy as well as a hot tub and even wood burning stoves to keep

### Aloha Volcano Vacation Rentals

Modest to Luxurious  
Accommodations,  
Romantic Hideaways  
for Two or Homes with  
Great Family Value.

(808) 967-7683  
1-800-845-LAVA

### VOLCANO ART CENTER

Hawaii Volcanoes National Park  
Gallery open daily 9 a.m. to 5 p.m.

**OCTOBER EXHIBIT: "Local Color"**  
paintings by Dietrich Varez

SUSPENSE THRILLER

**Wait Until Dark**

Kilauea Theater

Fridays & Saturday at 7:30, Oct. 28 thru Nov. 12  
Sundays at 4:00, Oct. 30 & Nov. 6

Call 967-8222 for reservations and information.

See Coffee Times Calendar for classes & workshops.

### CARSON'S

### VOLCANO COTTAGE

Volcano's most private and inviting B&B



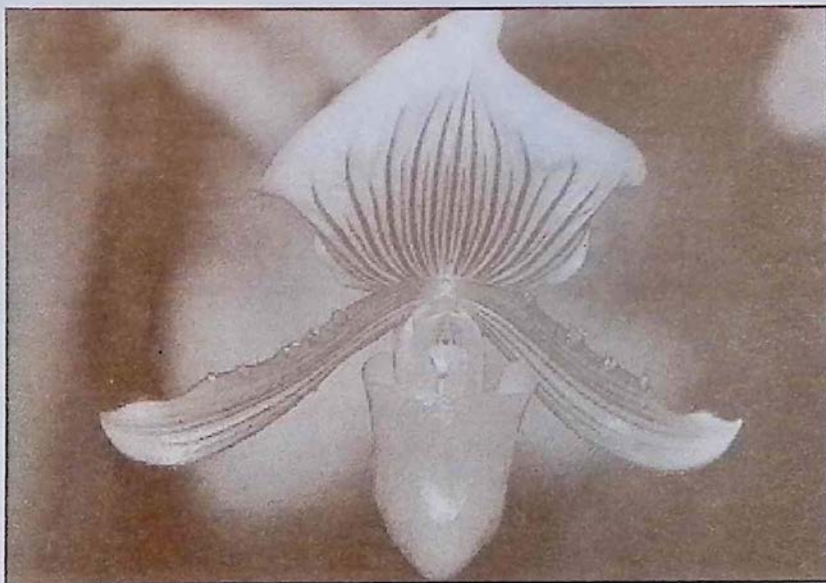
Experience The True Fantasy  
Of Hawaii ~ Forested Garden  
setting ~ Separate Guest  
Rooms & Cottages ~ Hot Tub ~  
Wood Burning Stove ~  
Amenities Without The Price  
(808) 967-7683  
1-800-845-LAVA



## Akatsuka Orchid Garden, an Orchid Lover's Paradise!

All orchid photos courtesy of Akatsuka Orchid Garden

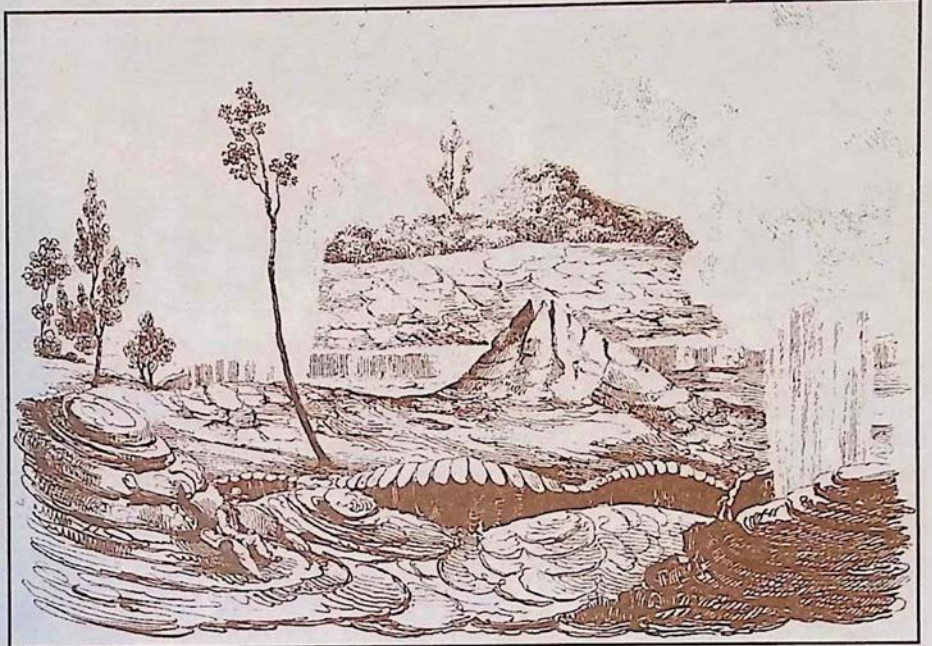
you warm on those cool volcano nights. Chalet Kilauea, The Inn at Volcano, features rooms decorated with art from around the world and even a treehouse suite, a unique alternative for couples looking for that romantic getaway. My Island Bed and Breakfast, located on a five acre botanical estate, is an 1886 missionary home offering guests the choice of rooms in either the main house or garden apartments. Located off of Hwy. 11 are the private Hale Ohia Cottages surrounded by bonsai-style gardens and moss covered grounds. The suites and cottages are both spacious and comfortably outfitted. Ohia Gardens offers guests all the comforts of home with their own kitchen, lounge, TV etc. The two guest rooms are separate from the main house and



Paphiopedilum

have a shared bath.

Perhaps one of the most memorable dining experiences on the Big Island can be found at Kilauea



Print of the Volcanoes by M. Dumont D'urville circa 1836  
from Voyage Pittoresque Autour Du Monde

Lodge, which features continental cuisine beside the historic fireplace of friendship. The mountain lodge also hosts twelve romantic rooms for overnight visitors. One spectacular stop you do not want to miss when you are in the volcano region is Akatsuka Orchid Garden. Seeing is believing when you arrive at this exotic and tropical garden. Visitors are welcome to free tours and complimentary orchids during their visit.



Cattleya

For Park Information Call: (808) 967-7311 or For Eruption Update Call: (808) 967-7977

No Booking Fee  967-7244

**Volcano Reservations**  
SELECT STATE WIDE ACCOMMODATIONS  
Bed & Breakfasts ~ Cottages ~ Vacation Homes ~ Condos  
Your Key To Hospitality  
BUDGET TO LUXURY ~ GREAT VALUE



**HALE OHIA**  
COTTAGES

RETREAT, RELAX,  
RELIVE HAWAII

Volcano, Hawaii • (808) 967-7986

*Chalet Kilauea -  
The Inn at Volcano*



EXPLORE TREASURES FROM AROUND THE WORLD  
Unique Theme Rooms ~ TreeHouse Suite ~ Vacation Homes  
Jacuzzi ~ Fireplace ~ Library ~ Garden

Gourmet Breakfasts **967-7786** Afternoon Tea



### Woodcarvers Corner

A Showcase of

Hawaiian  
Modern and  
Native American Art

Jim and Chris McLuckie, Owners



(808) 985-8518

Historic Main St.  
Pahoa-Puna, Hawaii  
Quaint Shops, Local Food,  
Arts, Crafts, Theater

For visitors who want to experience the true feeling of old Hawaii, Pahoa village holds the key to this untouched past. First a rugged sawmill town then a sugar town and later a crossroad on the old railroad, Main Street



Sumo wrestling was popular in a town that was built by early Japanese sugar workers. photo courtesy of the citizens of Pahoa, circa 1960's

Pahoa has maintained its western style storefronts and wood boardwalks in a charming turn of the century Victorian style.

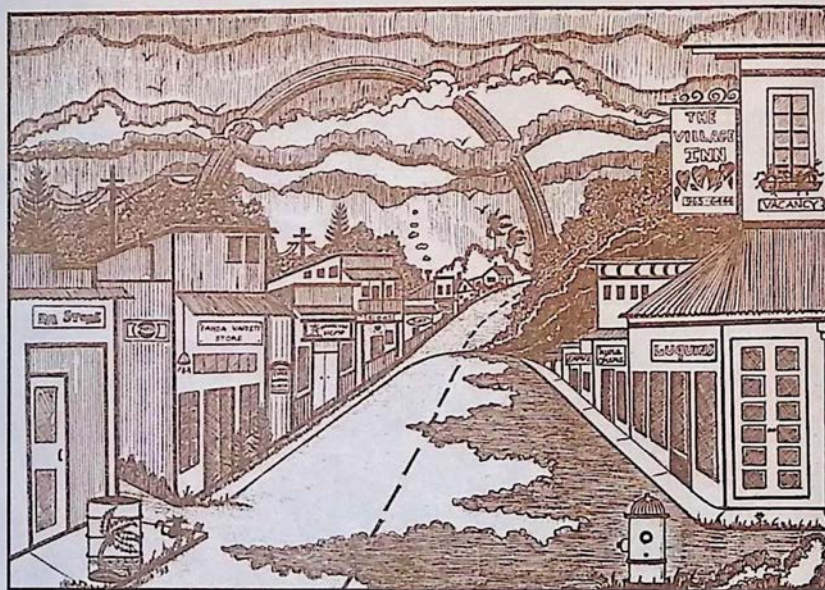
Quaint shops from surf, to curio and restaurants span the flavors of the globe from Thailand, to Mexico, and Italy, making Pahoa Village one of the most pleasurable and tasteful stops on the Big Island.

Call ahead to any of the friendly shops to see if there are any special events scheduled during your visit. Pahoa has the reputation of holding some lively and entertaining performances both on its Main Street and at the Akebono Theater,

Hawaii's oldest theater.

Lodging in Pahoa is an alternative as well. The historic Village Inn, built in 1910, housed some of Puna's earliest travellers and still operates today. The rooms are clean and spacious with vintage victorian decor. The Bamboo House, located above Pahoa Natural Groceries is also available for those visitors looking to spend the night.

The countryside surrounding Pahoa is filled with natural wonders like the Lava Tree State Park, steam vents, groves of papaya trees and black sand beaches along the rugged Puna coast. Visitors are warned however that a prolonged stay in this Aloha time capsule may make leaving a very difficult task.



Drawing of Historic Downtown Pahoa Village by artist Patricia Borton

NATURAL GROCERIES  
**PAHOA**  
Organic produce Health Foods  
Open 9 - 9 p.m.  
Sunday 9 - 6 p.m.

**The Godmother** 965-0055  
Breakfast: 8-11am, Lunch: 11am-3pm, Dinner: 5-Closing  
EVERYTHING HOMEMADE  
Delicious authentic  
New York-style Italian cuisine  
Located in historic Pahoa Village

**THE VILLAGE INN**  
HISTORIC PAHOA  
BUILT IN 1910  
P.O. BOX 1987 • PAHOA HAWAII 96778  
(808) 965-6444  
LODGING & HAWAIIANA  
CURIO SHOP  
\$39.95 double & up

**huna ohana**  
METAPHYSICAL BOOKS  
& ESPRESSO CAFE  
VEGETARIAN FOOD  
Open 8am - 5:30pm  
Muffins, croissants, salads, sandwiches,  
& 100% organic Kona Coffee.  
P.O. Box 536, Pahoa, HI 96778  
(808) 965-9661

**LUQUIN'S**  
MEXICAN RESTAURANT  
Chili Relleno, Carnitas,  
Tamales & Taquitos  
FREE CHIPS & SALSA  
with Dinner  
OPEN DAILY  
11 a.m. to 9 p.m.  
**965-9990**

**Naung Mai**  
Thai Kitchen  
"We serve Cheng Mai,  
Bangkok & Phuket style cuisine."  
Vegetarian Entrees offered  
Mon. - Fri. 3 - 8:30pm  
Sat. & Sun. 12 - 8:30pm  
**965-8186**

NATURAL EMPORIUM  
**PAHOA**  
Imports, Clothing,  
Jewelry, Gifts,  
Open 10 am to 6 pm

**HAWAIIAN HEMP COMPANY**  
HEMP FASHIONS  
CLOTHING  
FOOD  
PAPER  
LITERATURE  
& ART  
(808) 965-8600  
Pahoa Village  
Send \$2  
For our catalog of products  
P.O. Box 2056, Pahoa, HI 96778

**BAMBOO HOUSE**  
Unique Private Lodging  
in Downtown Pahoa  
Call  
**(808) 965-8322**  
for information

# False Killer Whales of Kona

by Dan McSweeney

The false killer whale is one of the many "toothed" whale species found in Hawaiian waters. They are related to the killer whales called the "Orcas" which have also been seen in Hawaiian waters. But, the false killer whale does not have the distinctive black and white markings as the Orca does. Both species are legendary for their adeptness at hunting large prey.

At first glance, the false killer whale appears similar to the Hawaiian pilot whale. It is about the same length (16-18 feet), but it has a narrow, tapered head, rather than bulbous head like the pilot whale. The false killer whale's body is all black, except for a grey chest patch and a light grey blaze that is located on both sides of the head.

Off the Kona Coast, I have seen false killer whales in groups numbering 20 to 30 individuals, although they are reported in herds of hundreds. They are considered an oceanic species of whale. However, they will come close to the Big Island, especially when pursuing prey. False killer whales feed primarily on squid and fish and have recently been reported stealing bait and fish from sport and commercial fisherman's lines.



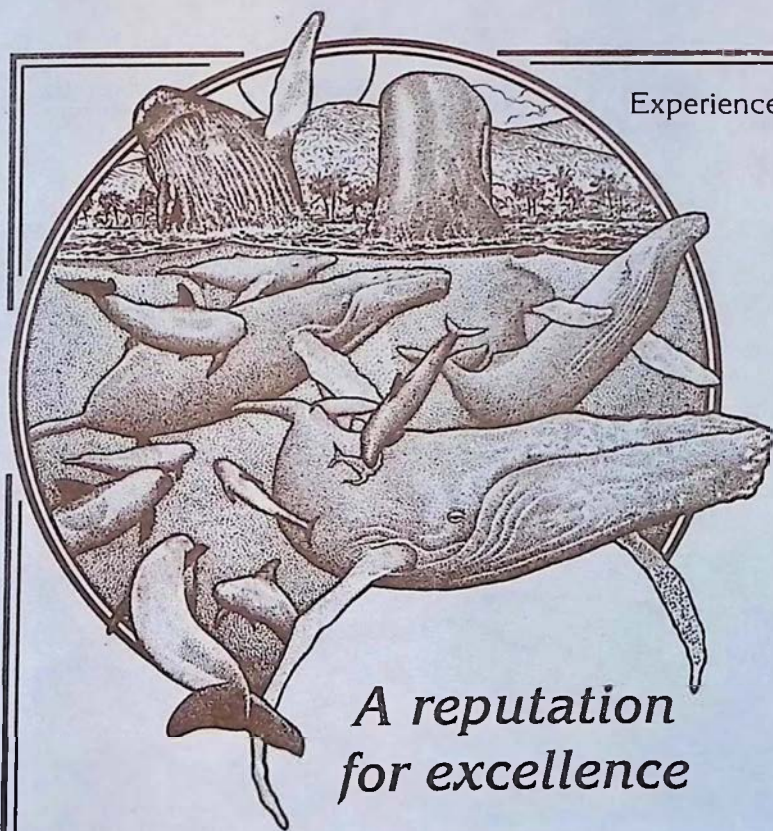
"False killer whales eating tuna"  
photo by Dan McSweeney®

These animals are frequently seen playing in and riding the bow waves of boats and often will jump completely out of the water. False killer whales are curious and some will not hesitate to approach boats and divers. They have an impressive mouth full of large teeth used for catching and holding fish and squid.

Some personal observations of mine confirm that they will frequently pass and share captured fish with other group members. False killers have also been reported attacking humpback calves and occasionally feeding on dolphins.

False killer whales are sometimes taken for food in "drive fisheries" off Japan. The Japanese fishermen believe that by eliminating these whales they will reduce the whales' predation on prized fish resources. Also, mass strandings of these whales have been reported involving hundreds of these false killer whales.

To learn more about the false killer whale and other year-round species spend the morning with us on one of our whale watching adventures. Refer to our ad below for more information.



*A reputation  
for excellence*

**3 Hour Daily Cruises**  
Special Family & Kamaaina Rates

HELP PROTECT THE WHALES.  
Proceeds benefit whale conservation.

Experience is the difference between Whale Glimpsing and Whale Watching!

Kona's Only Guaranteed  
Year-Round

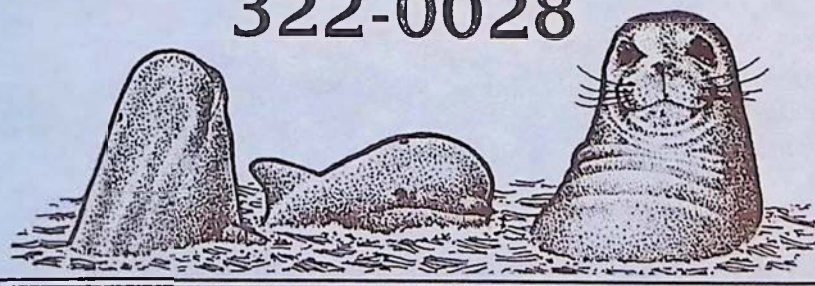
*Whalewatch*

With Capt. Dan McSweeney

Experience the whales with a devoted professional researcher/guide who has spent the past 20 years and over 30,000 hours around Hawaii's whales.

Call for information & reservations:

**322-0028**



# EAST HAWAII AND HISTORIC HILO

When you talk about the old Hawaii, at least the one that hasn't been touched as much today by the long arms of commercialization and development, you cannot help but to mention the East Coast on the Big Island. At the center of all this is old town Hilo, seeing a revitalization of spirit thanks to the effort of the Downtown Hilo Organization is busy restoring and preserving the storefronts of this yesterday town. Aiding this effort are the wealth of new businesses occupying Hilo's old buildings.

One of the brightest spots has been the renovation and remodeling of the S. Hata Building by **Cafe Pesto**. This new restaurant has maintained the building's Renaissance Revival style of architecture and filled the air with smells of wood oven baked pizza and Pacific Rim Italian cuisine.

To add to this old Hawaii feeling are the daily Suisan Fish Market Auction and the Hilo Farmer's Market which held every Wednesday and Saturday in Downtown Hilo.

Outside the town to the north are the Hawaii Tropical Botanical Garden, located along a 4 mile coastal scenic route, and Akaka Falls with its self guided pathways that take visitors over ravines and past several other waterfalls before ending up at the grand daddy of them all, Akaka.

When you are done sight seeing, lodging in Hilo is a snap and can accommodate every type of visitor. The magnificent and luxurious **Hale Kai Bed and Breakfast** on the bluff above the ocean overlooks Hilo's premier surf spot, Honolii. Expect nothing less than gourmet breakfasts and plenty of privacy. Hale Kai also has available a private cottage

facing a pool and ocean. If you are looking to stay within walking distance to downtown Hilo stop in at the affordable **Wild Ginger Inn** which features a jungle garden and stream setting overlooking Hilo Bay. If a stay in the Hawaiian countryside is what you are seeking, head seven miles north out of town to Papaikou and check in at **Hale Lamalani** vacation rentals. Situated at 1,000 feet above sea level this country retreat offers plantation style lodging with all the serenity one could ever desire.

After leaving Hilo you don't want to miss the drive north to Waipio Valley which takes you over scenic gorges that were once crossed by cane hauling trains in the hey day of sugar cane production. The plummeting waterfalls and river mouths under the extensive bridge systems leading north up the Hilo Coast are definitely an awesome sight. Akaka Falls State Park and the village of Honamu can be reached by taking Hwy. 220 off of the main route, Hwy. 19 north. See the map. Once you reach the Park a short paved hike will trail you past a network of smaller waterfalls, lush and colorful tropical foliage to the plummeting Akaka Falls. Its accessibility and grand size make Akaka Falls a popular stop along this eastern coast.

**Blue Hawaiian Helicopters**, located at the Hilo International Airport, can take you for an air adventure you are not soon to forget.

Whether you fly over magnificent waterfalls, or soar over an active volcano Blue Hawaiian is certain to take you places few would dare venture to on foot. The tour also includes a free personal video tape of your flight. For reservations see their ad below.



*Hilo's Suisan Fish Market*

## Island Log Homes



*"Quality cedar home packages"*

Deona and Jesse Garcia  
of Jim Barna Log Systems

334-3377  
1-800-968-Logs

## Hale Lamalani (House of Heavenly Light)

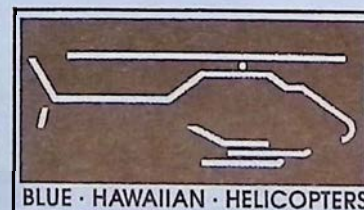
**A Hawaiian Hideaway, Vacation Rental & Hostel**  
Serenely situated with Inspirational Ocean, Mountain,  
Hilo Bay and Volcano Views from \$15 to \$55/Night!  
With Breakfast Fixings

Located 5 miles north of  
Hilo above Botanical Garden  
and before Akaka Falls at the gateway to  
Hamakua.



Phone/Fax: (808) 964-5401, Outside Hawaii 1-800-238-8BED  
R.R. 1 Box 206, Papaikou, HI 96781

We'll take you places  
where your feet can't go!



ON THE BIG ISLAND:  
961-5600  
IN MAUI:  
1-800-745-BLUE (2583)

# HISTORIC HILO

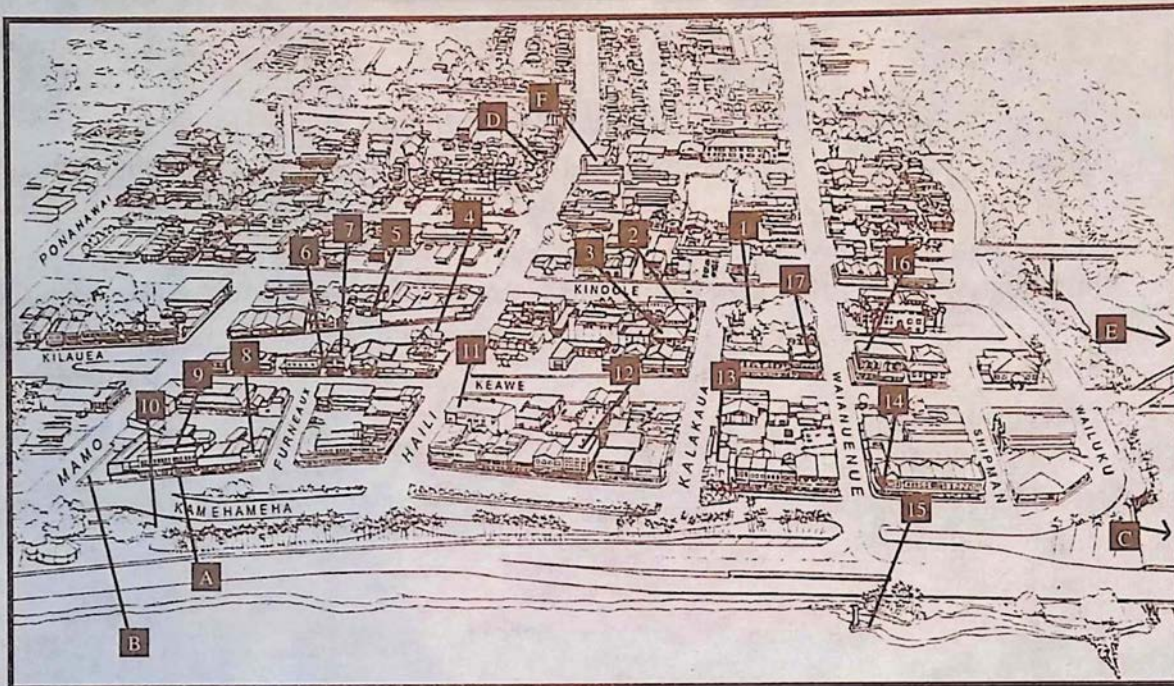
Historical information and map provided by the Downtown Hilo Organization whose interests involve the preservation of Old Hilo, Hawaii.

This self-guided walking tour of historic Downtown Hilo will take about one hour if walked continuously. However, you are encouraged to go at your own pace and spend additional time discovering and exploring that which interests you.

The seventeen stops along the way will provide you with information about the town from 1870 to the present. The history of Hilo begins much earlier, however, with the arrival of the Polynesians in 1100 A.D. They eventually inhabited the shores of Hilo Bay, farmed their crops, fished and traded their goods with each other along the Wailuku River. Changes came to this life-style upon the arrival of missionaries who brought with them new ideas, education and Christianity.

Hilo became a stopping place for explorers curious about the active volcanoes, whaling ships and traders. By the 1900's a number of wharves had been constructed, the breakwater was begun and the railroad connected Hilo with other parts of the island. Hilo became the center of commerce. Two destructive tsunamis, in 1946 and 1960, caused a shift in the location of Hilo's government and commercial life.

Today, historic Downtown Hilo is alive and bustling with renewed energy. New and old businesses alike are meeting the challenge of revitalizing our city center while preserving the historic character which remains very special.



## Historic Structures

1. Kalakaua Park
2. Old Police Station
3. Hawaiian Telephone
4. Central Christian Church
5. Taishoji Soto Mission
6. Furneaux Lane
7. Ancient Order of Foresters Building
8. Furneaux Building
9. S. Hata Building
10. Bayfront
11. Palace Theatre
12. S.H. Kress Company Building
13. First Hawaiian Bank Building
14. Koehnen's Building
15. Landing Wharf
16. First Trust Building
17. Pacific Building

## Dining, Lodging and Other Sights...

- A. Cafe Pesto (*Pacific Rim Cuisine*)
- B. Hilo Farmer's Market
- C. Hale Kai B&B
- D. Haili House Inn
- E. Wild Ginger Inn
- F. Lyman Museum



whether you choose...  
**WOOD-FIRED PIZZAS, FINE PASTAS**  
 OR  
**SCRUMPTIOUS DESSERTS**  
 you will always get...  
**AN ADVENTURE IN TASTE**

CAFE  
*Pesto*  
 HILO BAY

**OPEN FOR LUNCH & DINNER**  
 Historic S. Hata Bldg., Hilo Bay, 969-6640  
 Live Hawaiian Music on Sundays, 6pm - Closing

## Hale Kai

### Bed & Breakfast

Bjornen

★★★★

A 4 Star Bed & Breakfast on the bluff facing the ocean and overlooking Hilo Bay and Honolii surfing beach

**VERY PRIVATE, POOL, HOT TUB, BREAKFAST,**  
 Private Baths, Well Decorated Rooms

111 Honolii Pali, Hilo, HI 96720

**(808) 935-6330 Fax 935-8439**

Private Cottage also available      Double occupancy is \$80 and up

1940's Plantation style B & B with jungle garden & stream. A nonsmoking Inn.

*Wild Ginger Inn*

\$39 private bath double with breakfast.  
 100 Puueo St.  
 Hilo, HI 96720  
 Call 808-935-5556

**BED & BREAKFAST**  
**NO FRILLS SPECIAL: 7 days for \$150**

# HONOKAA

**CURIO**

**TRADITION**

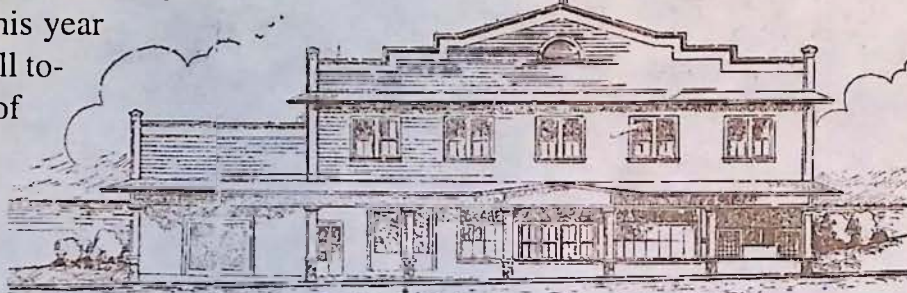
**SIMPLICITY**

**SINCERITY**

For years the town of Honokaa sat idle, its home town theater empty, local storefronts ghostly quiet, and streets void of the bustle that once rumbled down Mamane Street during the boom days of the Hamakua Sugar Company, an industry that for the last century has been the life blood of the people in this region. Since the decreasing activity of sugar production over the years and the recent decision this year to halt sugar production all together, the local citizens of Honokaa have redirected their energy and begun one of Hawaii's most spirited movements of rejuvenation. Local merchants have taken the initiative to reopen some of the closed doors in this picturesque town, including the local ice cream parlor, now called **Simply Natural**, outfitted with an old fashioned soda fountain and spinning stools. Other shops such as the **Honokaa Trading Company**, as well as many curio shops overflow with Hawaiian memorabilia, local crafts, and wearable arts. Home town cooking flows out of **Mateo's Pizza**, **Jolene's Kau Kau Korner**, and **Mamane Street Bakery** to add to the distinctly local flavor of what pizza parlor owner, Alex Mateo proudly calls, "The New Honokaa". Included in this

new Honokaa is the town's farmers market that has become a weekly event in the downtown area in front of the Historic Botelho Building. The market is open each Saturday of the month.

As Hawaii's old theaters are becoming more and more popular the citizens of Honokaa celebrated the reopening of their own **People's Theater**. The doors have officially been opened and evening feature films can be caught every Friday, Saturday and Sunday evening at Honokaa's historic theater. Also located in Honokaa is the **Hawaiian Macadamia Nut Plantation** which



BOTELHO'S GARAGE

is located down the hill from Kau Kau Korner. The plantation allows visitors the opportunity to view the inner workings of a macadamia nut factory. Factory creations fill the store shelves and will undoubtedly make your taste buds dance when you try them. Also featured is the plantation's own bake shop.

Legend has it that it was in Waipio Valley, "the land of the falling water", the great King Kamehameha, as a young boy, received his leadership training and first learned to surf. Today, family ohanas, "houses", still dot the landscape which is separated by a river that leads into the open sea. Local farmers and their families

Open Daily in Honokaa

Banana Taro Pancakes  
Fresh Deli Sandwiches  
Old Fashion Ice Cream Sodas  
Soups of the Day  
Hilo Homemade Ice Cream  
Even Taro Ice Cream

See our coupon for a **FREE ice cream cone**  
Now Serving Breakfast  
**775-0119**

curio shops overflow with Hawaiian memorabilia, local crafts, and wearable arts. Home town cooking flows out of **Mateo's Pizza**, **Jolene's Kau Kau Korner**, and **Mamane Street Bakery** to add to the distinctly local flavor of what pizza parlor owner, Alex Mateo proudly calls, "The New Honokaa". Included in this

Located in Honokaa  
Open Mon - Sat  
10 am - 8 pm

Serving the Island's Favorite Local and American Dishes  
What better place to share a little something with the community and travelers from afar.  
dine in 775-9498 take out

**MAMANE STREET BAKERY**  
Cafe

Fine Quality Baking, Quiches, Focccasias, Croissants, Desserts, Pastries, Cookies, Espresso, Cappuccino

Wholesale and Retail  
Located in Downtown Honokaa  
**(808) 775-9478**

**Honokaa Trading Company**

Antiques Collectibles New & Used Goods & Furniture

Downtown Honokaa  
**(808) 775-0808**

**Mateo's PIZZA**

Spaghetti Salads Veggie Pizza  
Open Daily at 11 a.m.

**SPECIALS**  
2nd Medium \$7.00  
2nd Large \$9

HONOKAA  
**775-0944**

It's the return of **HISTORIC PEOPLE'S THEATER**  
Feature Films Now Playing every Fri., Sat. and Sun. in Downtown Honokaa  
**775-0000**

**HONOKAA FARMERS MARKET**  
Every Saturday in Downtown Honokaa

# HAMAKUA

SUGAR

NUTS

WATERFALLS

TRANQUILITY

continue to make their way of life from farming taro and fishing off the sandy shores of this peaceful and remote valley floor.

Outside of Waipio Valley and Honokaa town are other early and small settlements of the Hamakua region such as Paauilo, Kukuihaele and Laupahoehoe all filled with a rich and local culture that hap-

pily survives in this region of the Big Island. A couple of popular overnight accommodations in the area are Waipio Wayside Bed & Breakfast Inn and Waipio Ridge vacation rentals. The only bed and breakfast in the area **Waipio Wayside B&B Inn** offers 5 relaxing bedrooms that have been renovated and decorated to preserve the character of old Hawaii. The master bedroom is very private and set back from the house (perfect for a romantic getaway). Enjoy the interaction of a traditional bed and breakfast while relaxing



EARLY WAIPIO VALLEY VILLAGE PRINT - engraving by Doms, circa 1785.

in a historic 1938 plantation home. Swing in the large double hammocks on the expansive deck or watch a sunset from the gazebo. After hiking soak in the old 6 foot bath tub filled with an array of aromatherapy products. At check-in sip one of 20 flavors of tea brought to you by The Republic of Tea. Or experience our amazing Hamakua coast coffee. Your

host Jacqueline Horne is an expert on hiking trails and a great source of information on the Island. See add on last page and browse through the Hawaiian Island B&B Association pages. **Waipio Ridge Vacation Rental** lies perched on cliffs above scenic Waipio Valley and hosts magnificent valley views. See their ad below. New doors will continue to open for all of Hamakua as a period of change sweeps through the land with the fall of the sugar empire and the rise of small businesses in Honokaa.

## October Honokaa-Hamakua Farmers and Cultural Market

Market held every Saturday beginning at 8:30am in front of the historic Botelho Building in downtown Honokaa

Call Hal Hisa Yamato at 775-9239 for more information

October Themes:

"Plantation Memories" and a "New Vision"  
& "Katsu Goto" Memorial Dedication This Month.

Katsu Goto was a "first ship" Japanese immigrant who became a respected community leader and successful general store owner in Honokaa before being killed in October of 1889 by resentful men of the powerful sugar cane industry. The men were able to escape punishment and the events surrounding Goto's death are now just being recognized. For more information on the "Katsu Goto" Memorial Dedication call Mr. Imada at 775-7276.

**Waipi'o Ridge Vacation Rental**  
Enjoy Breathtaking Ocean and Valley Views from this Private Secluded Cottage on Waipio Ridge. Spacious Studio Sleeps 4. Private Bath, Kitchen and Yard.

(808) 775-0603  
P.O. Box 5039, Kukuihaele, HAWAII 96727

## HAWAIIAN MACADAMIA NUT PLANTATION

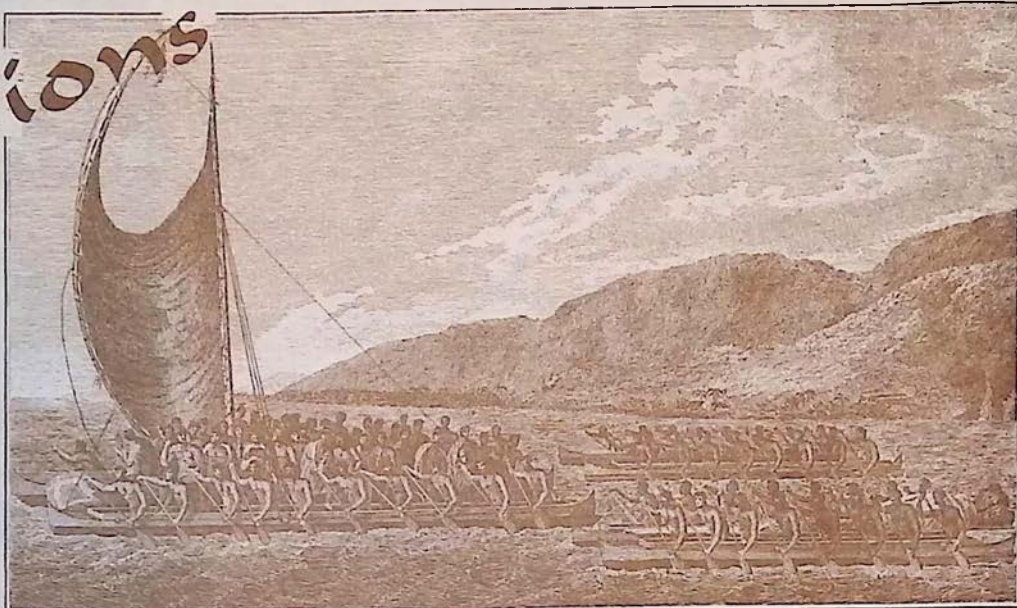
Factory Tours...and more!

Visit our Factory and Store in Honokaa for delicious macadamia nut creations - from freshly-roasted nuts surrounded by creamy chocolate, to macadamia nuts and coconut combined in a fantastic butter brittle, to the best macadamia nut cookies from "our" bakery...mmmm good.

LOCATED IN HONOKAA TOWN, THE HEART OF HAMAKUA

775-7201

# Koa Creations Past and Present



This early 19th century print portrays the ancient Hawaiian's use of koa canoes in Kealakekua Bay on the island of Hawaii.  
Print by John Webber

Koa, an endemic tree that grows at the middle to high elevations, has long been a part of the Hawaiian culture and in ancient times was used to build canoes, surfboards, weapons and other implements. The koa tree, which at maturity stands at a height of nearly sixty feet with an average trunk width of six feet, became the choice wood of canoe building. Other than koa, few species of trees in the islands were either large enough for canoe building or hard enough to play a sustainable role in ocean battle. It is even widely believed that the abundance of koa on the Big Island helped Kamehameha I conquer the other islands, such as Oahu and Molokai, which were low lying and without significant forests of koa. High chiefs often placed a *kapu* (taboo) on large logs that would be used for canoe building. Because it was much easier to transport a lighter and rough hewn canoe to a beach *hale* (house) for finishing work, much of the initial shaping work was completed in the forest near

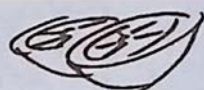
where the tree had fallen. Religious ceremonies including a blessing always surrounded the building of canoes which were built to last a lifetime.

Surfboards, like canoes, in ancient Hawaii were usually made of koa as well. The boards once cut out were first smoothed with coral abraders and then with finer stone abraders before being covered with a black stain derived from the *ti* plant or pounded *kukui* bark. The final treatment usually included a rubbing of *kukui* or *niu* oil.

Koa was used to construct weapons like *pololu* (long spears) and handles of daggers but because size was not an important factor in the making of many of these weapons other wood types were used to spare the koa.

Today Koa has become a popular choice with island craftsmen constructing furniture, bowls, sculpture pieces and in special cases the construction of canoes.

see pg. 29



Holualoa  
I N N

"The finest B&B on this or any other island in Hawaii..."

Jerry Hulse, L.A. Times

You are invited to visit this elegant country estate overlooking Kailua Bay, set amid coffee orchards and home of Holualoa Kona Coffee Company.



HOLUALOA  
Kona Coffee  
c o m p a n y

Nightly Rates, \$100-150 • Weddings & Events Welcomed  
Coffee Hulling & Roasting

For tours & information, call (808) 324-1121 or (800) 392-1812

ATTENTION COFFEE FARMERS

## STEEL BUILDINGS

POLE-BARN STYLE • MILL OR WAREHOUSE  
COFFEE, GRAIN OR EQUIPMENT STORAGE • GARAGES  
HORSE ARENAS • COMMERCIAL • RESIDENTIAL

Pre-Engineered, Certified, Easy Assembly

"The best Buildings for Hurricane Areas, Earthquake Zones... and Termites don't like them."

Great Bargain Prices - Financing Available  
Call Terry Bumstead 322-7003



FRESH HOME  
COOKED QUALITY

In our New Deli Location  
Breakfast, Lunch & Dinner

Fresh Fruit Smoothies,  
Deli Sandwiches, Quiches, Salads  
(Home of the famous South Point Salsa)

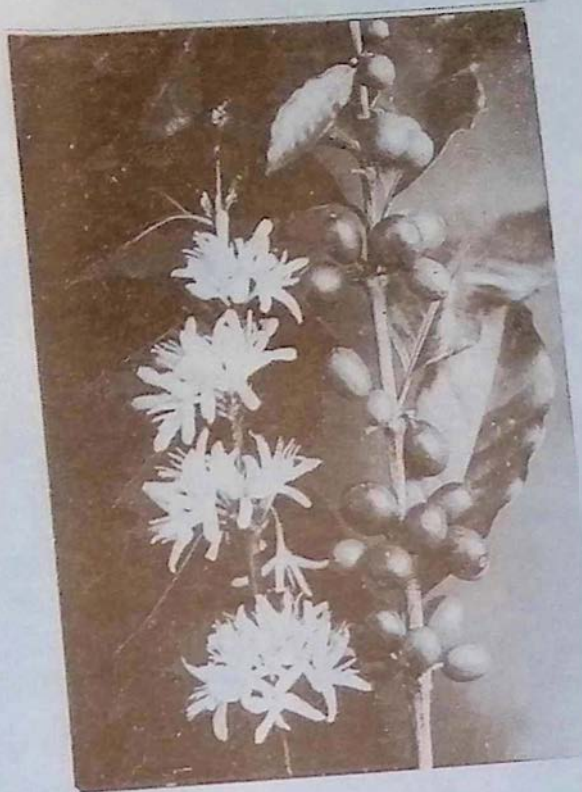
And an outrageous Bakery:  
Banana Split Cake, Kona Coffee Chocolate  
Swirl, Lilikoi Cheese Cakes and more..

Located at Kona Bali Kai Condo,  
76-6246 Alii Dr. by the Banyan  
Surf Spot.

329-6010

Stop by and try one of  
our daily specials!





*continued from page 6*

this time. Wide spread planting in Brazil, especially in the mountainous regions around Rio de Janeiro occurred often. It was there that an English agriculturalist named John Wilkinson acquired the coffee that would be brought to Hawaii and planted at the home of chief Boki, then governor of Oahu. The reverend Samuel Ruggles of Kealahou took cuttings from this Oahu estate and planted them at his home in Kona. So you see, coffee has had an incredible journey before ever reaching the mountains of Kona back in 1828.

So, how did the coffee culture in Kona evolve. Even though coffee was in Kona in 1828 it wasn't until many years later that it was seen as a viable crop.

Through the later part of the 1800's and into the 1900's the situation in Kona was constantly changing and the industry experienced many booms and busts, never making Kona coffee an easy commodity to bank on. Many today who have experienced the ups and downs with Kona coffee over the years will warn the unsuspecting investor of the risks involved with the industry. Recently the price per cherry pound in Kona reached a high of one dollar in 1989 before falling to sixty five cents four years later in 1993.

Many Japanese who were in Hawaii as contracted workers on the sugar plantations during the boom years of the 1880's fled the sugar industry to work on the Caucasian owned coffee plantations in Kona which were experiencing a rapid rate of growth. But with a crash in the world coffee market in 1899 many of the large plantations were forced to lease their land to their Japanese laborers in parcels averaging from five to fifteen acres per lot. The lease agreement in

most cases was in exchange for one-half of the farms output in coffee. It was the Japanese family style of farming that pioneered and created the coffee culture in Kona.

The tenacious work ethic of these Japanese farmers and their usually large families seemed well suited for life in Kona as their ingenuity created some pretty industrious ways of producing a bountiful and vibrant crop of coffee. One case of this ingenuity came in the form of a moving roof system that operated on wheels to protect sun-drying coffee from the onset of afternoon rains. If you have the chance, look closely at many of the old coffee shacks along Mamalahoa Highway and you can still see wheels and tracks under many of these roofs, which the Japanese called "hoshidanas". "It was always fun to observe the bewildered reaction of an outsider when they witnessed the spectacle of a moving house," recalls Mr. Inaba, an early coffee pioneer, at last year's Kona Historical Society's Kona Coffee Pioneer's Day.

Because coffee developed into a family run operation in Kona, a strong sense of community centered around the Japanese in Kona. An independent mill was begun by the community for those who were seeking to establish their own autonomy in coffee production, and in the fall school was even postponed or put off so children could help their families with the picking of coffee. Many of these ideals, whether obvious or not, sustain independence among farmers in Kona today.

The modern coffee market demands new ways of thinking among its farmers. Many areas of coffee production have changed and new struggles face those who operate within Kona's present coffee industry. Farms and mills today are owned by people who first started coming to Hawaii from the mainland United States in the late

1960's. A considerable number of Japanese still operate their farms but many as growers and pickers that only sell their crop to local mills and have nothing more to do with the industry. Because many of the children of these coffee ancestors moved away from Kona to pursue dreams outside the farm, this era in Kona coffee history seems to be slowly drawing to a conclusion. It's interesting to note that the satire of the urbanized city child returning to the coffee farm has been played out more than a few times on local theater stages around Kona. The counter culture that is on the rise in Kona is one that is creating new and much needed inroads to today's industry and focuses on strengthening the reputation of Kona coffee and continuing its road to farmer independence.

For years Kona coffee saw its role in the world market as only a master blend that made inferior coffee taste better, and for years farmers in Kona were subservient to an industry that relied on the fine and superior characteristics of coffee grown in Kona. With the changing times in Kona, the rise of land and production costs, and the influx of mainlanders arriving from the United States to take advantage of all the riches a tropical paradise has to offer, Kona coffee faces the threat of extinction at the hands of corporations that intend not only to use Kona coffee as a master blend but the name "Kona" to sell a coffee which contains no more than ten percent Kona coffee. How this can be allowed to happen is the most often asked question by those outside of the industry. The answer is actually quite simple, it is

*continued on page 22*

Above left: Kona coffee beans and flowers. Below right: Man picking Kona coffee. Photos courtesy of Kona Historical Society, circa 1950's

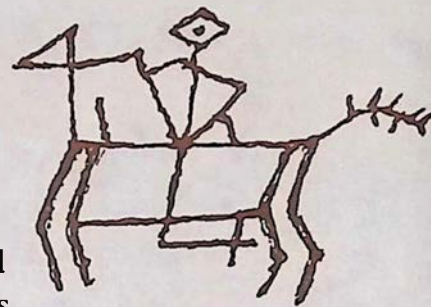


# Waimea Country

Between snow capped Mauna Kea and the Kohala mountains the green hillsides of North Kohala roll along under wispy white clouds, and afternoon rainbows frequently stream their way from the skies above Waimea. Inside this landscape herds of grazing cattle can be seen meandering their way through sloping pastures filled with cactus and dry underbrush as Hawaiian cowboys called paniolos still ride horseback and work the ranges.

Ranching began in this region of the Big Island after King Kamehameha appointed, in 1815, a young seaman named John Parker to hunt and shoot the herds of wild cattle whose population had grown uncontrollably since their introduction to Hawaii in 1793. Parker, who accomplished

his mission, managed to domesticate a herd of his own before marrying a Hawaiian chiefess. The marriage helped Parker to acquire the land that would later be used to found his 250,000 acre ranch in 1847. Today's existence of Parker Ranch as one of the largest ranches in the United States gives the outsider an idea of the magnitude of its size.



Today, the town of Kamuela, more often referred to after its district name Waimea, is a town that still surrounds itself with a ranching lifestyle. The brightly colored Victorian houses and shops, tidy yards filled with flowers and skeleton remains of wagons and wheels gives visitors the opportunity to see yet another sphere of the diversity of cultures that exist in Hawaii. Beginning a tour of Kamuela

with a cup of java and a bite to eat at **The Waimea Coffee and Company** is a great place to start.

Make sure you don't miss stopping at **Cook's Discoveries** in Historic Spencer House and **Up Country Connection** Gallery of Art & Antiques. Both shops are located in Waimea Center. At Cook's Discoveries the warm aloha of a 150-year-old restored home creates a unique setting for Cook's Discoveries' one-of-a-kind collection of treasures made in Hawaii by Hawaii's proud people. Look for the Hawaiian flags across from Waimea McDonalds. The marushka hand-beaded jewelry is a must see at Up Country Connection, which is often the spot for some of Waimea's most spectacular art showings that feature the works of both local and visting artists.



*Old wagon on the cattle ranching lands of Mauna Kea along Saddle Rd.*



*Discover the Best of Hawaii* AT COOK'S DISCOVERIES

Open daily 10 a.m. to 6 p.m.

In Historic Spencer House circa 1850 - Waimea Center Next to McDonalds (Hwy 19)

**(808) 885-3633**

Discover proudly made in Hawai'i treasures including koa, sandalwood, coconut, mango & avocado boxes and bowls. Hawai'ian books and language tapes. Hawaiian music and hula implements. Hawaiian quilts, collectibles and authentic reproductions of ancient palaoa, tapa beaters, fish hooks, squid lures. Island wear by Nike'u, Sig Zane and Island Cowboy. Woven lauhala. Feather, Ni'ihau, wiliwili, kukui and puakenikeni leis. Custom sterling jewelry by former Cartier goldsmith and Mings. Originals and prints by distinguished Island artists including Herb Kane, Harry Wishard, Kathy Long and Doug Po'olua Tolentino. Pure Organic Kona coffee, triple chocolate chunk cookies, fresh Waipi'o poi and poi cake, lemon-macadamia and guava-rum truffles. Even Poi Dog Biscuits! Many goodies under \$15! Remember... Buy Hawaii.



# Upcountry Connection Presents:

## OCTOBER KOA SHOW



### "Significant Other" by Tai Lake

Winner of the Past Presidents' Award at the 1994 Hawaii Craftsman Show in Honolulu. This and other koa pieces will be featured all October at Upcountry Connection in Waimea.

# Waimea Coffee and Company

## Now Even Better at Parker Square

In early October, Waimea Coffee and Company will be moving from its present location on Highway 19 in Waimea, just across the street to Parker Square ~ an exciting country collection of galleries, boutiques and shops. Waimea Coffee's famous espresso drinks and gourmet treats ~ and friendly country ambiance ~ have long made it a favorite gathering place for both residents and visitors.

Visitors to Parker Square enjoy the historic charm of its early, ranch-style buildings and spacious courtyard, while shopping at Waimea General Store, Bentleys Home and Garden and the Gallery of Great Things. Now, with the addition of Waimea Coffee and Company, you can relax on the covered lanai with a steaming cafe latte and croissant, enjoying the vista of Waimea's famous rolling green hills.

In the five years since Waimea Coffee and Company first opened, owner Dave Ellis has invested his lifelong gourmet food and wine experience plus two magic ingredients: old fashioned hospitality, and a determination to find the finest quality ingredients and products. Today Waimea Coffee has become both a cafe and market, giving customers a tempting selection of many excellent coffees and gourmet specialty items to serve at home.

Open Monday - Friday, 7:00am - 5:00pm and Saturdays 8:00am - 4:00pm, the cafe and market offers gourmet coffee drinks, fresh roasted beans, tempting baked goods, homemade country-style lunches, delicious desserts, a unique offering of coffee-related gift items and tee-shirts, and a selection of gourmet groceries and Hawaiian-made food gifts. All this is in addition to its mail-order service for Estate Grown 100 percent Pure Kona Coffees.

Now in its charming new setting, complete with abundant easy parking, you'll find "the same fun gang and great service" in the historic country ambiance of Parker Square. For more information call 885-4472 (Big Island) or 800-854-5662 (from the Mainland).

### Enjoy our Country Style Cafe ~ now at Parker Square

- Espresso, gourmet coffees and fine teas
- Unique Tee-shirts, mugs and gourmet groceries
- Iced coffees, teas & juices
- 100%-pure Estate-grown Kona coffees
- Pastries and desserts
- Mail-Order: 800-854-5662
- Homemade soups and salads



Outdoor seating on the courtyard lanai at Parker Square

In Paniolo country ~ on Hwy 19 ~ Waimea 885-4472

# Upcountry Connection

Gallery of Art & Antiques

Original Artwork, Bronze  
Sculpture, Ceramics & Antiques,  
Hand-Beaded Jewelry  
Koa Furniture & Accent Pieces  
Limited Edition Prints

## OCTOBER KOA SHOW

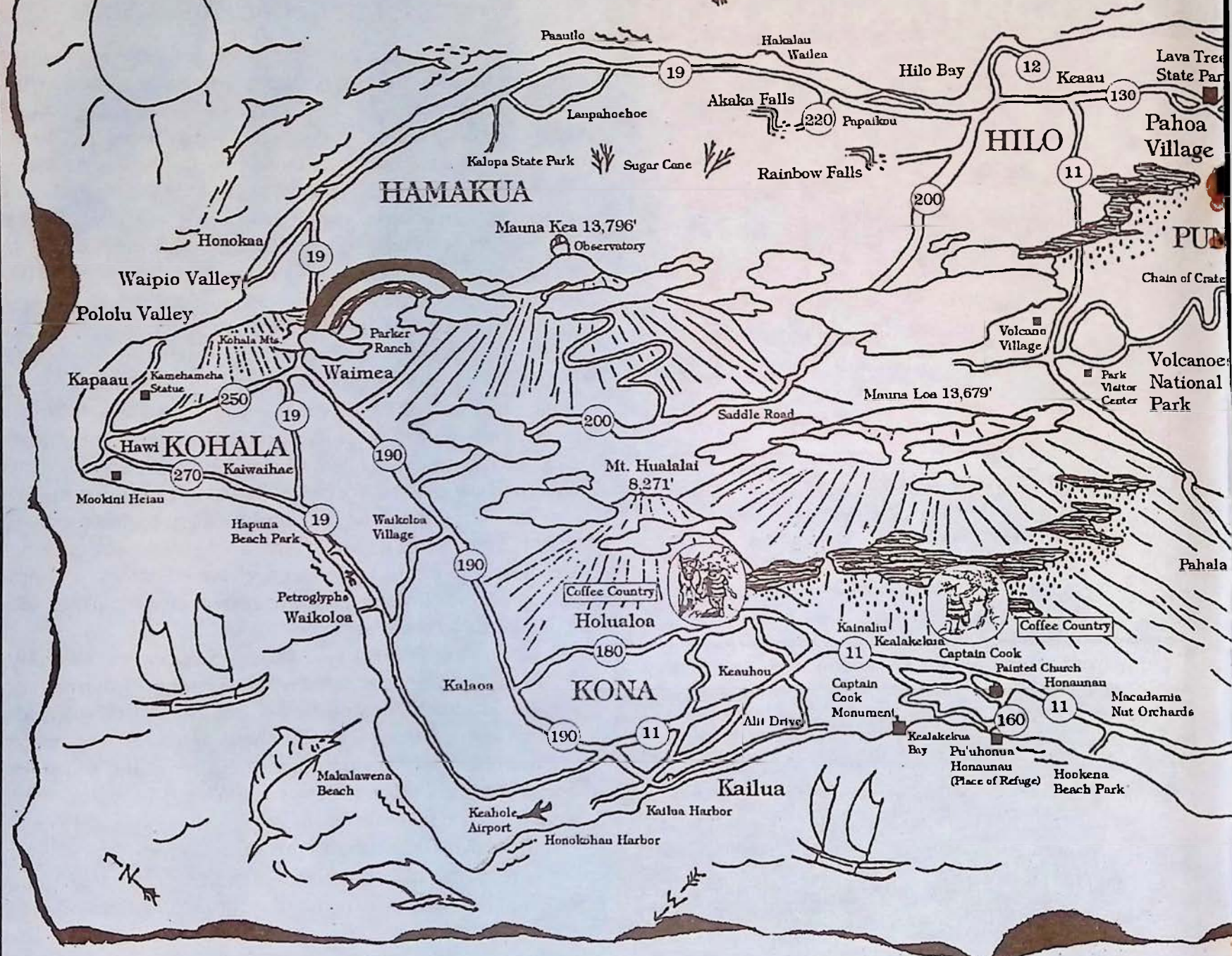
Featuring furniture and accent pieces by island artists

Tai Lake ~ Table, chairs, accent pieces  
Donavan's Design ~ Curly koa boxes, chest, tables  
Don Wilkinson ~ Rocking chairs, tables  
Gene Busher ~ Natural rim bowls

as well as other gallery artists

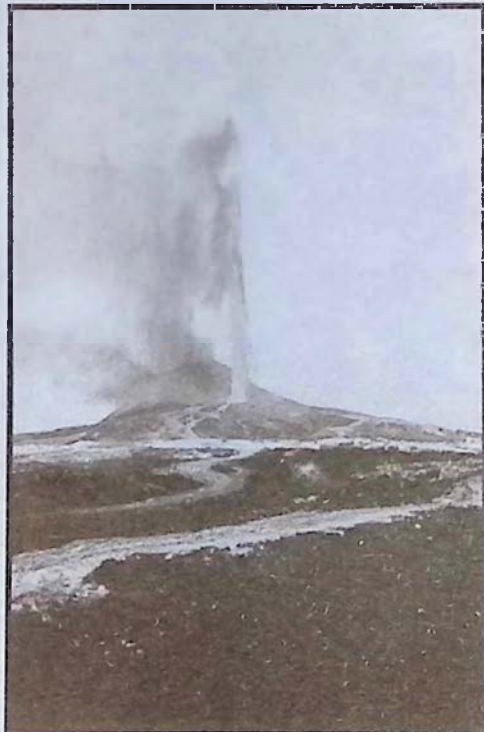
Waimea Center ~ Kamuela, Hawaii ~ Open Mon. - Sat. 10 AM to 6 PM ~ 885-0623

# HAWAII



Spectacular views of volcanic eruptions and lava flows by renown photog

# What To See...



- HISTORIC HILO**  
Early 20th century Hawaii happily lives on in the storefronts and buildings of this yesterday town. Outside the town are magnificent Akaka Falls and Hawaii Tropical Botanical Garden to the north.
- VOLCANOES NATIONAL PARK**  
Home of Pele, the Hawaiian goddess of fire. A region of unique features, volcanoes and a diverse biosphere. See page 6 of Coffee Times for volcano information.
- CAPTAIN COOK MONUMENT**  
The spot in Kealahou Bay where English navigator, Captain James Cook was killed in 1779.
- PU'UHONUA O HONAUNAU**  
An ancient Hawaiian village that is now a national park. Located in south Kona. Stop and see the Painted Church along the way on Hwy 160.
- WAIPIO VALLEY LOOKOUT**  
Spectacular views into a lush valley of waterfalls, rivers and cascading cliffs. (4WD, horse, or a hike are necessary for access into the valley)
- WAIMEA COUNTRY**  
In the heart of Big Island ranch country this western style town sits at the base of Mauna Kea.
- AKAKA & RAINBOW FALLS**  
Two separate waterfalls northwest of Hilo. Easily accessed by car and short enjoyable paved hikes.
- HEIAUS & PETROGLYPHS**  
Both can be found on the Kohala coast. The petroglyphs can be seen by following a path on top of the lava rocks at the Royal Waikoloan Resort.
- POLOLU VALLEY LOOKOUT**  
A northern valley lookout. The road there will take you through friendly N. Kohala towns and perhaps a view of Hawaii's neighboring islands.
- PUNA DISTRICT**  
Hosts the rustic western style town of Pahoa in addition to wild roadside orchids, steam vents, Lava Trees State Park and black sand beaches.
- SOUTH POINT U.S.A.**  
The southern most point in the U.S. It boasts a magnificent ocean side drive through rolling green hillsides filled with Holstein cows grazing above a coast line of rugged cliffs and crashing waves.

continued from page 17  
allowed!

Because we live in a world filled with product names that associate very little with the actual contents of products, Kona was an easy target for marketers looking to exploit the name "Kona" on a package of coffee that quite simply didn't contain Kona coffee. Today, the detriment of these blends and misuse of the name "Kona" is great. Commercial coffee companies operating in Hawaii and around the world continue to place their emphasis on the name "Kona" rather than on the actual contents of the coffee they are selling. Kona's coffee lands barely reach two thousand acres, and when compared to the nearly six thousand acres reported to have been in production at the turn of the century, and the nearly seven thousand that were reported in 1958 something is apparently wrong, especially when considering we are in a period of time when the gourmet coffee market is booming in our fellow forty nine states of the Union.

At this point if you are upset with where we are in the State of the Bean Address and the survival of Kona coffee in the world marketplace I apologize because I haven't told you the whole story.

We can guarantee you that in the quiet hills above the now sprawling world of mass development, better known as Kailua-Kona, Hawaii, there is a healthy new breed of coffee farmers operating with their own ingenuities, much like their early Japanese counterparts. In an effort to protect the name "Kona" from fraudulent use the local Kona Coffee Council, a nonprofit coalition of independent farmers and processors in Kona, has spear headed an effort to federally register the name "Kona" with a certification mark that would protect it from counterfeit and fraudulent use. The Certification mark confers powerful enforcement remedies including confiscation of counterfeit goods, a maximum of treble damages for intentional infringement, as well as court costs and attorney fees. To this point the determined Council, chartered by the State of Hawaii, has had to fork out nearly twenty thousand dollars in legal fees to fight opposition in Washington by companies who stand opposed to the certification. Local merchants, banks, millers, farmers as well as the local public have contributed the funds needed thus far to wage this legal battle of federally registering the name "Kona" which would have cost, if not for opposition, only time, effort and an insignificant filing fee. The total cost of the registration

could reach nearly sixty thousand dollars when all is said and done.

Certification will be available for everyone's use as long as the basic industry standards are met which means that when a coffee bears the name "Kona Coffee" it contains only



At the center of controversy in Kona these women were protesting the replacement of their brays by jeeps at the annual Kona Coffee Festival. Photo courtesy of the Kona Historical Society, circa 1950's.

100% Kona coffee of Prime grade or higher.

"It's obvious that the registration will occur, but not without a significant cost to the farmers," one twenty year independent farmer remarked to me last September as he proudly pointed to the spot on the ground where he first roasted coffee over an open fire using a rotating metal barrel. It's this kind of spirit of perseverance that will guide the registration process to success.

Great care and concern for the future of Kona coffee is wide spread throughout Kona. As one farm proudly hangs a banner in support for the certification mark others open their farms to public tours and stories of the struggles of coffee farming in Kona, it is plain to see that this is just another step in the long road to coffee independence.

Today, coffee farms in Kona are active with both ancient and modern methods of coffee production. In all cases the coffee is still hand-picked at the picker's average rate of one to three hundred cherry pounds per day. From the fields the coffee is transported in everything from old station wagons to heavy trucks to the mill where farmers can collect an average of eighty cents per pound for their efforts. In the past donkeys called "Kona Nightingales" were used to transport coffee up and down the hillsides but were later replaced by small farm jeeps that weren't quite as stubborn as the donkeys. Once at the mill the coffee cherries are husked and the beans undergo

a twelve hour soaking period before being spread out to sundry for fifteen to eighteen days. At larger operations rotary driers may be used to speed up this process but it is believed by many farmers that a finer tasting bean is produced when the coffee is sun-dried slowly. From the drying decks the beans are usually stored in what is known as parchment (a thin shell membrane that surrounds the coffee bean). Storage in parchment usually helps preserve the freshness of the bean. When the beans are prepared for shipment or roasting they are removed of their parchment and graded on a gravity table that separates the beans into grades according to their size and weight. The minimum size and grade of Kona coffee is called Prime with the highest grade being labeled extra fancy. One rare and round grade of Kona coffee is called peaberry, which is the result of single bean growth in the usual two bean coffee cherry. Peaberry is regarded by some to have distinct cupping characteristics be-

cause it is believed to retain all the flavor of two beans in only one. Many independent farms that operate solely on their own produce a grade of coffee known as an estate grade, simply meaning that it is coffee grown exclusively on that farm and is of a prime grade or higher. Organic coffee farming is coming of age in Kona as well and constitutes the last variety of coffee in Kona. Farmers who have perfected the natural fertilization process have themselves created a more natural coffee that carries a distinct taste as well as having a positive impact on the environment.

Many large and small farms around Kona now grow, mill, roast and sell their own coffee by the pound to island visitors or through mainland accounts and mail-orders.

The modern age of desktop publishing and data bases have outfitted the Kona coffee farmer with important marketing tools by which they can operate their operation entirely from their farm.

All this self initiative sweeping through Kona, despite a local and mainland marketplace wrought with the perils brought on by neighborly competition, the industry and reputation of Kona coffee will continue to benefit and grow from its continued spirit of independence. And such is the positive state of the Kona coffee bean in 1994.

For more information on the certification of Kona Coffee or to lend support to the issue of certification contact the Kona Coffee Council at (808) 328-9486. Happy Festival Season!!

# Friendly North Kohala

Art Galleries, Fine Dining, Cafes, Quaint Shops, and even a local Ice Cream Factory

Following highway 270 north visitors will encounter a landscape filled with historical landmarks that include the original statue of King Kamehameha, Kalahikiola Church, and Mo'okini Heiau which is regarded as the oldest pre-Western contact temple of worship. In the year 1758 King Kamehameha was believed to be born at Mo'okini.



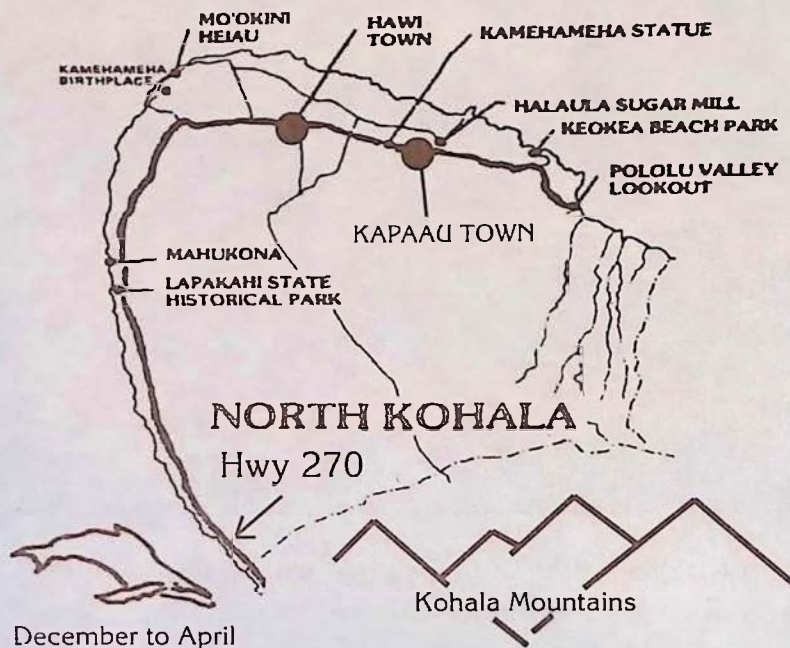
photo by Don Rich

Also to be found in the North Kohala region are the remnants of a once thriving sugar plantation industry of the 1880's which is still visible in the many old storefronts of Hawi & Kapaau towns. These towns are now preserved by a new generation of Hawaii business which have their own distinct local offerings. In Hawi

Town, a fun romantic & wild boutique called **As Hawi Turns** awaits those visitors seeking new clothing for the Hawaiian life-style and is not for the weak at the knees. The shop also carries handmade crafts by Big Island artists.

Next to As Hawi Turns is **Kohala Pacific Realty**, where visitors are welcome to stop in for free maps of the

continued on page 8



December to April

**KOHALA  
COFFEE  
MILL**

889-5577

WELCOME to the newest addition to Big Island Coffee Houses

## KOHALA COFFEE MILL

Located in the restored 1932 Toyama Building in downtown Hawi

Enjoy espresso, cappuccino and a full line of coffee drinks (all made with 100% Kona coffee).

Relax, share wisdom, 'talk story' and feel the pace of old Hawaii in a shop that is decorated with scenes from early Hawaii coffee plantation days.

Also featured are fine pastries, fresh donuts, coffee accessories and gifts.

Open 7 Days A Week

## As Hawi Turns

Clothing for the  
Hawaiian Lifestyle,  
Local Crafts

Located in downtown Hawi  
across from Kohala Health  
Food and Pumehana Flowers

889-5023



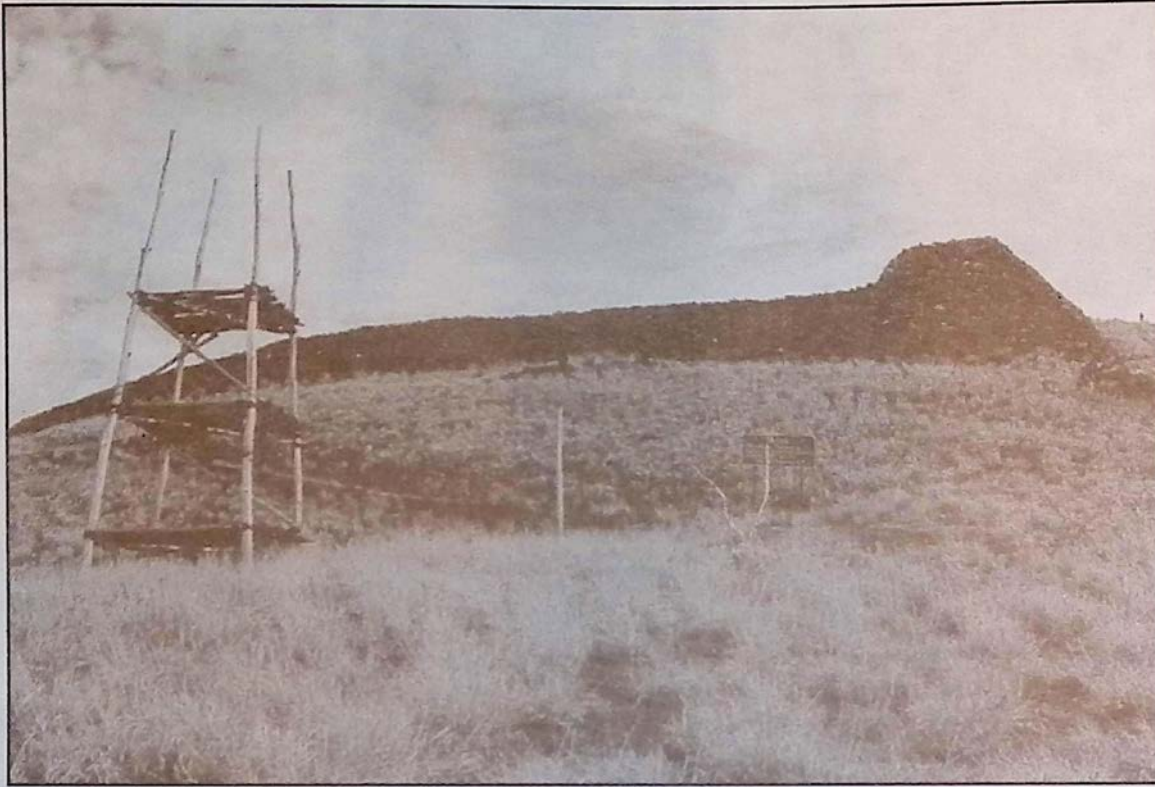
whether you choose...  
HAND-TOSSED PIZZAS, FINE PASTAS  
OR  
SCRUMPTIOUS DESSERTS  
you will always get...  
AN ADVENTURE IN TASTE

CAFE

*Pesto*  
KOHALA COAST

OPEN FOR LUNCH & DINNER  
Kawaihae Center, On the Kohala Coast, 882-1071

continued from page 23



North Kohala region. On the other side of the street is the newly opened **Bamboo Restaurant**. Inside what was once the grand old Takata Store, built during the booming days of sugar cane, Bamboo combines Pacific Rim dishes with flavors from as far off as Thailand to create an innovative style of cuisine. Farm fresh herbs and local fish contributes a local flare to the food.

Just up the road a piece, smack dab in the middle of Kapaau Town is Hawaii's own local ice cream factory, **Tropical Dreams**. The owners, Lou and Deby Bleier, feature their fresh fruit sorbets and homemade ice creams and their original macadamia nut and honey butters in a parlor that fills one storefront in old Kapaau town. **FREE TASTES!!!** Across the street from the ice cream factory and also across from the King Kamehameha statue artist Gary Ackerman reflects on the landscape around him through

his impressionistic style of painted art on display in **Ackerman Galleries**. Gary's combination of a free liquid style on canvas and varied techniques of painting allows him to successfully blend the colors of the natural environment. Both galleries also feature the works of other local artists.

If the drive up the Kohala coast and gallery hopping has got your appetite going at this point, maybe it's time to visit **Don's Deli** across from the King Kamehameha statue. Let Don prepare a sandwich from his large selection of cold cuts and cheeses or try one of his homemade vegetarian quiches or pastas. Don's Deli is a great place to relax before heading north to Pololu Valley.

The latest addition to downtown Hawi is the **Kohala Coffee Mill**. Owned and operated by Jon and Dixie Adams the historic Toyama building circa 1932 is now the home to a new coffee shop which will serve 100% Kona coffee at its espresso bar.



Fresh Tastes  
"Old Hawaii" Feeling  
in Hawi town

bamboo

Lunch Tues. - Sat. 11:30 - 2:30pm  
Dinner Tues. - Sat. 6 - 9pm  
Pupus served all day  
Sunday Brunch 9 - 2pm  
**(808) 889-5555**



和安 Wo On Gallery

featuring:  
wood, watercolors,  
wearable art,  
and much more

Devoted to the artists  
of North Kohala  
and showing work by: Sandra  
Gray, Jim Parker, Lesley Patton  
and Patrick Rankin

.7 mile past the 25 mile marker  
on 270 North  
**(808) 889-5002**

Tropical Dreams™

Homemade Ice Cream  
Sorbets & Frozen Yogurt  
Used by Top Chefs of the Islands

Windows Cafe

"Every seat has a view"  
Come have lunch,  
but leave room for dessert  
889-0505

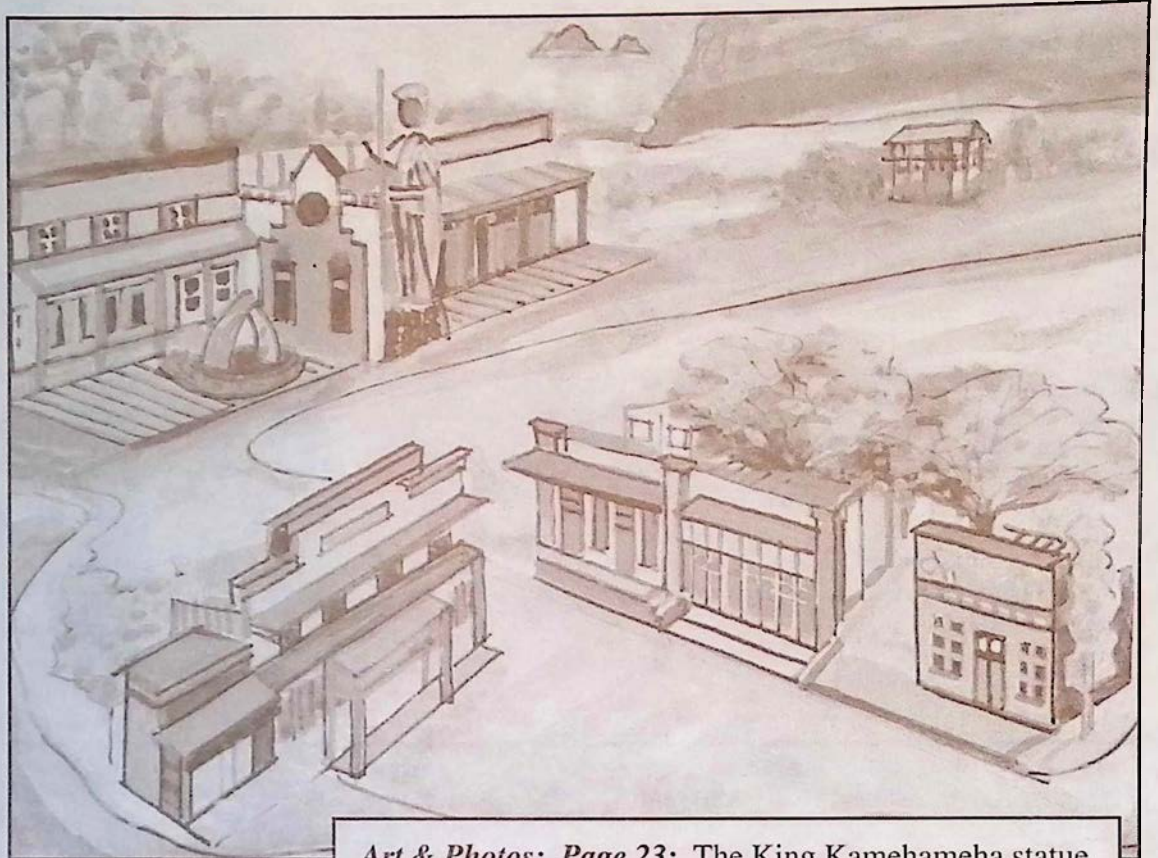
OPEN DAILY:  
Mon.-Sat. 11-5 • Sun. 1-5



When you're done in town Hwy. 270 will lead you through North Kohala's fertile pasture lands, dense forests, and ultimately to Pololu Valley, which offers one of the best scenic view lookouts on the island. Along your way to Pololu there is **Wo On Gallery**, three miles past Kapaau town, which now occupies the old Wo On General Store, built by Chinese immigrants around 1920. The gallery hosts the works of only North Kohala artists, its youngest contributor being only 6 years old. Wearable art, sculptures, pottery, woodwork and watercolor paintings by Patrick Rankin can all be found at this local gallery.

While driving along the coastline of North Kohala remember that if the skies are clear, you may be able to catch a view of the island of Maui looming from the other side of the Alenuihaha channel, which separates Maui from the Big Island. Between the months of December and April visitors are almost guaranteed a humpback whale sighting off the coast of North Kohala. This region of the Big Island is a particularly favorite spot for our migrating friends from the north. Perhaps the favorite way to cap off the afternoon in North Kohala is to stop in Kaiwaihae and enjoy a Pacific Rim Italian meal at the original **Cafe Pesto** located in the Kaiwaihae Shopping Center near the harbor. The reasonably priced meals are complimented by wonderful pastas, fresh salads and hand-tossed pizzas as well as an original selection of delicious desserts. If you are planning on visiting the town of Hilo **Cafe Pesto** can also be found in the old S. Hata Building near the bay front.

Come and enjoy this peaceful region of Hawaii. You will see and taste the wonders it has in store for you.



*Art & Photos: Page 23: The King Kamehameha statue in downtown Kapaau Page 24: Kohala Coast Petroglyphs and Pu'ukohala Heiau Above: Impressionistic painting by Big Island artist Gary Ackerman of the North Kohala towns of Hawi and Kapaau.*

*Ackerman*  
**GALLERIES**

ORIGINAL WORKS BY  
ISLAND ARTISTS  
ORIENTAL ANTIQUES  
PRIMITIVE ARTIFACTS AND GIFTS

Open daily 9:30 to 5:30 p.m.  
Both locations in Kapaau town Hwy. 270 North

**(808) 889-5971**

**DON'S Family DELI**

New...  
Fresh Fruit  
Smoothies &  
Carrot Juice

**10% OFF**  
all lunch orders over \$10  
see our coupon

sandwiches, lasagnes, quiches,  
pastas and chicken enchiladas  
**CAPPUCCINO & ICE CREAM**

CAFE LOCATED ACROSS FROM KING'S STATUE  
MON-FRI 8-6 SAT/SUN 8-5  
**(808) 889-5822**

**KOHALA  
PACIFIC  
REALTY**

Specializing in  
North Kohala  
**LAND & HOMES**

Phone (808) 889-5181  
Fax (808) 889-5161

Located in the restored Toyama Building  
Downtown Hawi

P.O. Box 307 Kapaau, Hawaii 96755

# Kailua-Kona

*We landed at Kailua (pronounced Ki-lee-ah), a little collection of native grass houses reposing under tall cocoanut trees, the sleepest, quietest, Sundayest looking place you can imagine. Ye weary ones that are sick of the labor and care, and the bewildering turmoil of the great world, and sigh for a land where ye may fold your tired hands and slumber your lives peacefully away, pack up you carpetsacks and go to Kailua! A week there ought to cure the saddest of you all.*

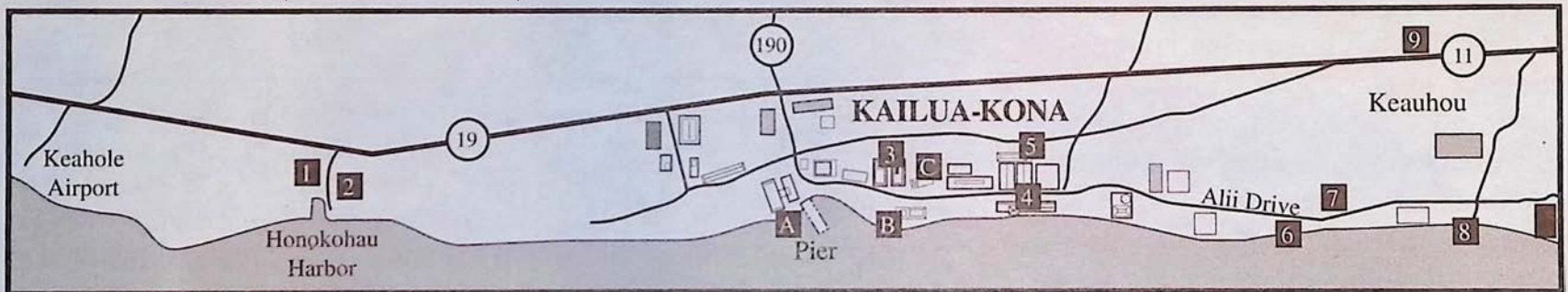
*-Mark Twain 1866*

1. Kona Kai-Yak (Rentals and Tours)
2. Impulse Charters (Sport Fishing)
3. Sibu Cafe (Indonesian Cuisine) located inside Banyan Court
4. Moto Photo (One Hour Photo Developing)
5. Kona Marketplace Cinemas
6. Jill's Country Kitchen (Deli and Bakery)
7. Adrienne's Casa Del Sol B&B
8. Edward's At The Terrace (Mediterranean Classics)

9. La Bourgogne French Cuisine (French Classics)

**HISTORICAL SIGHTS:**

- A. Ahuena Heiau (Constructed to honor the god Lono, Ahuena was King Kamehameha's center of rule from 1813 until his death in 1819)
- B. Hulihee Palace (Built in 1838 the palace was a vacation home for Hawaiian royalty)
- C. Mokuaikaua Church (Founded during the 1820's Mokuaikaua was the first Christian church in Hawaii)



**IMPULSE CHARTERS**  
Affordable Sport Fishing  
1/2 & Full-Day Charters

For Reservations During Your Stay on the Big Island Call Today or for a Free Brochure write:

**FREE LUNCH**  
with full day charter

Capt. Roger Christiansen  
73-4343 Ama Ama St.  
Kailua-Kona, HI 96740

Located at Honokohau Harbor (808) 325-7749

**W KONA MARKETPLACE CINEMAS**

October Film Features:  
**"Radioland" & "Junior"**

FREE 3 HOUR PARKING WITH VALIDATION  
at the Kona Marketplace on Alii Drive, Kailua-Kona

showtime info. call 329-4488

KONA OCEAN FRONT  
**Adrienne's Casa Del Sol**  
Bed and Breakfast Inn  
(House of the sun - a traditional Bed and Breakfast)

Ocean Front/Views From Every Room & Suites (\$80-\$150), all with Private Baths, Breakfast Buffet Served By Inground Swimming Pool/Ocean View Spa Area, Relaxing Atmosphere.

Summer Special: 25% discount on 2 day stay or more!

77-6335 Alii Dr., Kailua-Kona, HI 96740, (808) 326-CASA(2272)

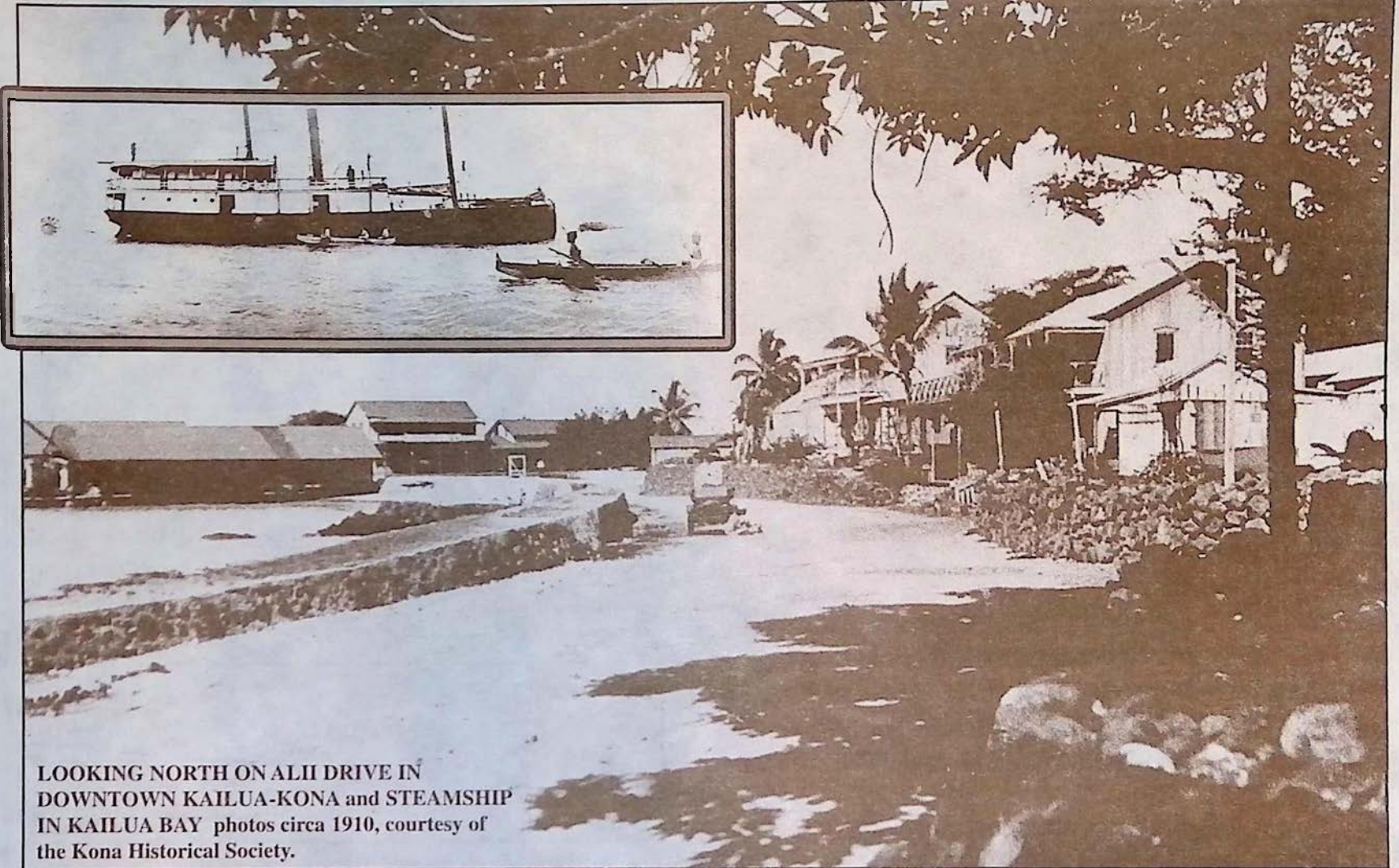
MEMBER VISITORS CLUB  
PROFESSIONAL INNKEEPERS

**Edward's**  
AT THE TERRACE

Featuring Mediterranean Classics,  
Ocean Side Tues. - Sun.

Serving Breakfast, Lunch & Dinner 322-1434

\*\*\*Mention this ad for a free after dinner cup of Kona coffee\*\*\*



LOOKING NORTH ON ALII DRIVE IN DOWNTOWN KAILUA-KONA and STEAMSHIP IN KAILUA BAY photos circa 1910, courtesy of the Kona Historical Society.



Vegetarian Specialties  
Fresh Ingredients

"SIBU CAFE serves the best and the most interesting, moderately priced food in Kailua-Kona."

~Hawaii Handbook '92

"One of the best places to eat on the Island...almost erotically good offerings."

~San Francisco Chronicle

"Delicious Indonesian food in a casual setting. They also have...vegetarian dishes and good karma."

~Lonely Planet Travel Survival Kit

Open 7 Days A Week 11:30am - 3pm, 5pm - 9pm  
Banyan Court Mall, Downtown Alii Drive, Kailua-Kona  
329-1112 • No Reservations • No Credit Cards

ONE HOUR  
**MOTOPHOTO**<sup>TM</sup>

**FREE SET OF PRINTS**

with every roll of film developed

SEE OUR COUPON

329-2080 Kona Inn 322-8091 Keauhou

Located at: Kona Inn Shopping Village (1 hour) on Alii Drive & at the Keauhou Shopping Village (overnight service)

GENTRY'S KONA MARINA,  
HONOKOHAU HARBOR,  
KAILUA-KONA



SEE OUR COUPON FOR KAYAK RENTAL

**RENTALS/SALES/TOURS**

Custom Kayak Tours Around The Big Island, Day & Overnight Trips To Remote Island Destinations.

all levels

(2 hour introductions, half or full day trips)

**(808) 326-2922**

# ALOHA THEATER COMPLEX

## In Up-country Kainaliu

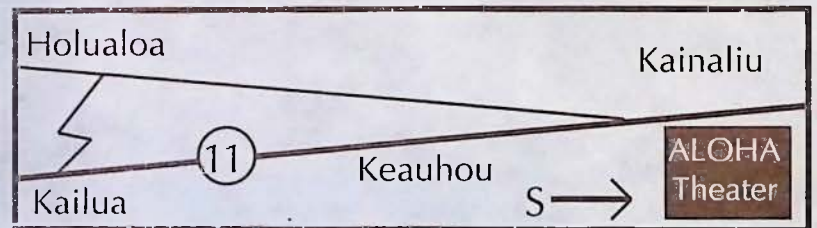
Located just a short drive south on highway 11 from Kailua-Town, central to Kona's coffee country, is the historic Aloha Theater Complex built in 1932.



Local theater performances produced by the Aloha Performing Arts Center and various other local community groups are on stage every month at the complex that also hosts a Cafe, and Dance Academy. At the cafe visitors can enjoy breakfast, lunch and dinner, which including many vegetarian specialties. A second floor bake shop turns out breads, cakes

and cookies that fill the glass case just inside the front door to the theater. Relax on the outside lanai while you sip a cup of pure Kona coffee, something very few restaurants on the Big Island actually serve. To round off this Aloha experience, the local Academy of Dance run by Reni Damron is always alive with people of all ages practicing tap, ballet or jazz in the hall located at the north end of the complex.

Holualoa Kainaliu  
Kailua Keauhou S → ALOHA Theater



"DELICIOUS HOMEMADE GOODNESS"

Open for breakfast, lunch & dinner  
8 a.m. to 8 p.m. Mon. - Sat  
Sunday Brunch 9 a.m. to 2 p.m.

THE BEST BURGERS IN KONA

MEXICAN SPECIALTIES  
FRESH BAKED BREADS, CAKES, COOKIES...  
ESPRESSO BAR  
INTERNATIONAL BEER & WINE SELECTION

IN THE HEART OF KONA COFFEE COUNTRY

322-3383

The Aloha Performing Arts Center presents the Aloha Community Play... production of  
Neal DuBrock's Sensuous Halloween Mystery Melodrama

# Countess DRACULA

Directed by Harald Bouton

October 14, 15, 21, 22, 28, 29, 30, 31, 1994

All evening performances at 8:00 pm  
\*Devotees 4:00 pm Sunday Matinee

General Admission - \$10  
Students & Seniors - \$8

Tickets available at: Blake's Bookmark Shop, Keauhou Village Book Shop and at the Office

**ALOHA THEATRE**  
KAINALIU, HAWAII 322-3924

*As always, we encourage you to support local artists and performers.*

ADULT SITUATIONS  
PARENTAL GUIDANCE  
SUGGESTED

from pg. 16

Because so much emphasis is placed on the preservation of the scarce resource of koa, most, if not all of the wood being used to create these works are taken from trees that have already fallen to the ground. An extensive planting of koa on the Big Island by highland ranchers and Kamehameha Schools in Honolulu has been practiced for years but it is expected that a gap of nearly twenty years will exist between the time a crop can actually be harvested for use. Rest assured though, koa will be around for years to come and its future uses will continue to grow in the world of art, craft and canoe building as well.

If you are unfamiliar with the look of koa it is one that only the eye of the beholder could best describe. Its butterfly like design of the inner grain and rich color of red wood exhibits a warm and organic feeling. In most cases the koa design piece is left with its outer edge of the tree intact letting it flow naturally in its surroundings.



You might call it koa furniture. It's as well crafted as any of the conventional designs, but the comparison stops there. Well known to canoe racing clubs for his work in koa and fiberglass, as well as his work on the voyaging canoe replica Hokule'ia, Kona artist-craftsman Jerry Benson has also been applying his talent to koa creations for the home.

The wood itself tells Jerry what it wants to be. Each piece of koa is unique in grain or color. One piece may suggest a desktop or table top. Another may have a grain pattern which, when opened up like the wings of a butterfly, becomes the back of a chair. The possibilities are limited only by the imagination.

Jerry is now joined by his equally talented brother Gary, and good things are happening

# Home creations by Big Island artist Jerry Benson

in their secluded South Kona studio. Amidst the sounds of hot saw blades and cool jazz, functional sculptures for the home are being created, each as unique as the koa from which it's made.

From there the pieces go to the home of their patrons David and Mary Randall, where they may be seen by appointment. You may call David at 328-9445 for photographs or to schedule a convenient time to view the collection. If you have something very special in mind, the Benson brothers will be pleased to help you turn your fantasy into reality.

This new "grown in Kona" enterprise will operate under the name "Custom Koa Furniture by Jerry Benson" and will begin accepting orders in October 1994, when the initial 54-piece "showpiece" collection is completed. They will specialize in serving clients who want their entire home (or at least several rooms) done entirely in custom-crafted koa.

Ho'onanea, the home of David and Mary Randall is nestled on the slopes above Kealakekua Bay and functions as a vacation rental that hosts guests from around the world, as well as serving as a venue for weddings and catered parties and a showroom for Big Island artists including several magnificent paintings by Herb Kawainui Kane.

The first public showing, outside of Ho'onanea, of this art including the koa furniture and paintings will take place on October 1 at Kamehameha Mall in Kailua-Kona. For more information on Ho'onanea refer to their ad on page 33.



KEEP KONA COUNTRY  
BUY A FARM!!!

**ARNOLD RABIN (R) (GRI)**  
PRINCIPAL BROKER

**A REAL ESTATE CONCERN-HAWAII**  
(808) 322-3677 / FAX: (808) 322-6119  
P.O. BOX 766, CAPT. COOK, HI 96704 / (RES) 328-2386

SERVING THE KONA COFFEE  
COMMUNITY SINCE 1980

**Island Books**

**ISLAND BOOKS**  
FINE USED BOOKS BOUGHT & SOLD

Hawaiiana, Classic & Modern  
Literature, Mysteries, Art, Mythology,  
Miscellany

Located in Kainaliu  
1/4 mile south of the  
Aloha Theater

P.O. Box 645  
Kealakekua, HI 96750

**322-2006**

**THE BAD ASS COFFEE CO.**  
Of Kona Hawaii

**ROASTED FRESH DAILY**

See Our Coupon for a  
**FREE POUND OF COFFEE**

**CAFE LOCATIONS:**

**The Original Bad Ass Coffee Co., 322-9196**  
Kainaliu Next to Crystal Star Gallery  
The Bad Ass Coffee Co., 326-4637  
Kailua Waterfront Row on Alii Drive

**The Bad Ass Coffee Co. Kailua Warehouse 329-8871**  
Next to Giuseppe's Italian Cafe on Alii Drive

**The Bad Ass Coffee Shack of Kaiwihae 882-7019**  
Above Cafe Pesto in Kaiwihae Shopping Center

**Bad Ass Coffee Shop, 875-8558**  
1280 S. Kihei, Maui

**INDEPENDENT DISTRIBUTORS**

**Hawaii Mac Nut Plantation Inc., 775-7201** (Honoka'a),  
**Long's Drugs** (In Hilo & Kona)  
**Keep In Touch, 885-7191** (Parker Ranch Shopping Center)  
**Uncle Billy's Hilo Bay Hotel, 322-2825** (Hilo)

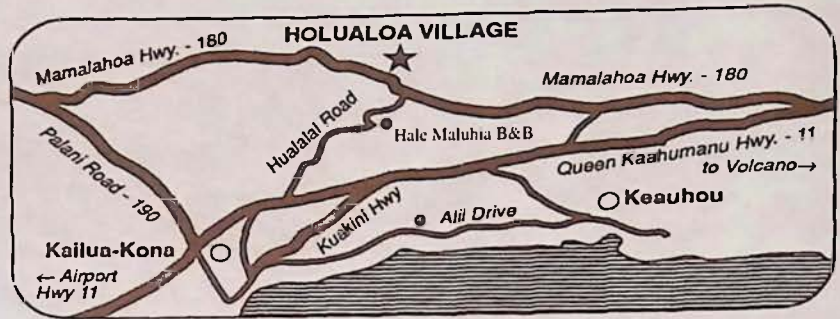
**The Bad Ass Coffee Company**  
**1-800-338-7139 (808) 322-2825**

# Holualoa Aloha & Art

Days pass slowly in the artist's retreat town of Holualoa, almost like the gentle mountain breezes which weave their way through the groves of coffee trees lining the slopes of Mt. Hualalai. Steeped in natural beauty and tradition, this little mountainside coffee town blends a touch of today's art with a passion for the simpler life of the past. The village's many private galleries showcase the works of many local artists in a wide array of mediums.

When you are done visiting the galleries, the friendly local espresso bar, **Holuakoa Cafe**, will undoubtedly snatch an hour or two from your day and maybe more if you decide to indulge in the homemade cake and pastry selection. Every Thursday night the sound of acoustic guitars may be heard in the night air strumming over a chorus of 'gone happy' coffee drinkers packing the cafe for Holualoa's only night time entertainment. (Give cafe owner, Meggi Worbach, a call at 322-CAFE for an up to date scoop on her local entertainment schedule).

If you are looking for a place to spend the night, **Hale' Maluhia** (House of Peace) Bed and Breakfast is



located below the village on Hualalai road. This rambling home offers guests a sense of seclusion and a touch of paradise and is outfitted with several lanais, an outdoor spa, kitchen and even office facilities.

Make it a point to wander up for a visit to Holualoa you will love this adorable country town.



**Come and Sing Along with the Live Band Expresso Thursday Nights at Holuakoa Cafe from 7:00 to 10 pm**

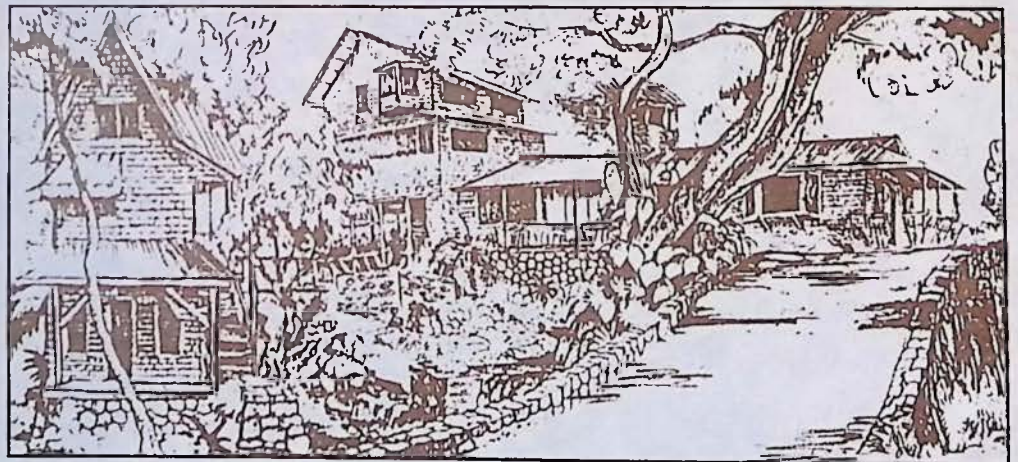
## Hale' Maluhia Bed & Breakfast

### GRACIOUS KONA PLANTATION LIVING UP-COUNTRY COFFEE LAND

- \* Just the right touch of Old Hawai'i.
- \* Big rooms/beds and private baths.
- \* Chinese Slate & Tile Spa with Jets.
- \* 3 miles to Village. Easy Airport Access
- \* \$55-\$110 Dbl. with Full Breakfast

For reservations or a FREE brochure write or call:

76-770 Hualalai Rd. Kailua-Kona, HI 96740  
Toll Free 800-559-6627. (808) 329-5773.  
Fax (808) 326-5487



# Holuakoa Cafe

## ESPRESSO BAR

HOURS: Mon-Sat 6:30am - 5pm Thurs. nites  
7-10pm Closed Sunday **322-CAFE**



For that delicious coffee drink in an upcountry atmosphere, stop on by Holualoa's most Happinin' Scene...

Love, *Meggi*

PS. Don't forget to come in and hear our new live music on Thursday nights!

# 100% PURE KONA™ COFFEE

Hand Picked, Sun Dried and Truly Graded

Did you know that out of the **20 million pounds** of Kona Coffee bought and **consumed** every year under the name Kona only **2 million pounds** of that coffee is actually **grown** here in Kona? And the **frightening fact** of the matter is...that most Kona coffee drinkers around the world have no idea that what they're drinking is a coffee containing 90% of something other than Kona coffee. It's time for this deceptive labeling and misuse of the Kona name to end. In an attempt to preserve the coffee growing heritage



here in Kona and the gourmet reputation of our local coffee and to combat this widespread misrepresentation of the Kona name to sell counterfeit coffee we here at Coffee Times magazine unconditionally guarantee that the coffee you receive from us is farmer direct, contains only 100% Kona coffee and meets the State of Hawaii's highest grading standards. Enjoy the pure taste of the world's finest coffee and help preserve our local farm lands by buying only 100% Kona.

*Our Mail Order Coffee Makes The Perfect Gift ~ Hotel Delivery Available ~ We Only Roast To Order!*

## ORDERING INFORMATION

Type	Roast	Lbs.	Total
_____	_____	_____	\$ _____
_____	_____	_____	\$ _____
_____	_____	_____	\$ _____
_____	_____	_____	\$ _____
_____	_____	_____	\$ _____
_____	_____	_____	\$ _____

Delivery Charges \$ \_\_\_\_\_

In U.S. please add \$3.50 for 1st pound & \$1.50 for each additional pound (Call for international fees)

Grand Total \$ \_\_\_\_\_

Please mail with check or money order to:  
Coffee Times, P.O. Box 1092, Captain Cook, HI 96704

by American Express Credit Card

Am. Express Card #: \_\_\_\_\_

Exp. Date: \_\_\_\_/\_\_\_\_/\_\_\_\_ Name: \_\_\_\_\_

Signature: \_\_\_\_\_

Ship To: \_\_\_\_\_

*Please allow up to 1 week for delivery*

**WE SHIP WORLD WIDE**

**1-800-750-KONA**

In Hawaii Call: (808) 326-7637

P.O. Box 1092, Captain Cook, HI 96704

### PEABERRY

The finest Kona coffee bean available (The result of single bean growth in the usual two bean coffee cherry)  
16.95/lb. 79.95/5 lbs. 149.95/10 lbs.

### EXTRA FANCY

Exquisite taste, high elevation, large single bean coffee  
15.95/lb. 74.95/5 lbs. 139.95/10 lbs.

### FANCY

Excellent quality, average sized bean, high cupping standard  
13.95/lb. 64.95/5 lbs. 119.95/10 lbs.

### PRIME

Choice bean of most specialty Kona coffee consumers.  
10.95/lb. 49.95/5 lbs. 89.95/10 lbs.

### FLAVORED KONA (Prime) COFFEE

Vanilla, Macadamia Nut & Chocolate Macadamia Nut  
15.95/lb.

*(please specify medium, dark or espresso roast)*

**Coffee Times**



Don't Leave Home Without It®

We welcome the  
American Express Card

# SOUTH KONA

*Kona Coffee Farms, Kealahou Bay, Captain Cook Monument, Pu'uhonua O Honaunau, The Painted Church*

There perhaps is no other region on the Big Island shrouded in more history than the district of South Kona. Whether it be the origins of Kona coffee, the ancient Hawaiian village setting of *Pu'uhonua O Honaunau* (Place of Refuge) National Park, or the Painted Church nestled along the hillside overlooking Kealahou Bay, the spot where the famous English explorer Captain Cook met his fate in 1779, South Kona will keep the historically minded visitor busy weaving their way through its network of mountain roads.

High on the slopes and off Hwy. 160 is The Painted Church, where sometime between 1899 and 1904, Father John Velge, a Catholic missionary from Belgium painted images on the interior walls of the church depicting the biblical scenes of heaven and hell. Near The Painted Church is the rural setting of **Wakefield Gardens Restaurant**. Owner Arlene Wakefield serves lunch daily at her botanical garden setting in Honaunau. Look for her famous Papaya Boat with tuna salad, it has become a favorite dish among the local population and continues to thrill visit-



*Tiki Carvings at Pu'uhonua O Honaunau National Park in Honaunau.*

ing diners. The restaurant is open for lunch only and includes a free tour of the botanical gardens surrounding the estate.

If your time in South Kona allows for it leave room in your stay for the "Narcissus" at therapist Sheila Pattison's **Querencia Spa**. Her massage treatment includes a jacuzzi, herbal facial, full body massage, beverages, light pupus and a catered gourmet dinner in the Spa's Tea Room. Custom catering is available to meet all your needs.

From the wonders of The Painted Church, Middle Keel road empties out onto Napoopoo Road before passing **Bay View Farms and Mill**, family owned and operated by New Hampshire native Andy Roy and his wife Rosalyn. Over the distant hum of pulping and grading machines the sweet and damp smell of freshly pulped coffee cherry fills the air during the fall and winter coffee season. An extensive system of outlying drying decks and groves of coffee trees cover the landscape in front of the now visible cliffs of Kealahou Bay, which in the hazy distance plummet their way seaward. Bay View Farms has re-

## QUERENCIA SPA

Featuring:

**"The Narcissus"**

*A Very Special Private Affair*

A romantic candlelight massage for couples followed by a catered supper and pupus.

Insurance & Work Comp.  
Accepted

mat. 2225 mat. 3053

Massage, Body Wraps & Pacs, Injury Therapy, Jacuzzi & Hydrotherapy

*Located near the Place of Refuge in Honaunau*

(808) 328-2569



Querencia Spa Tea Room



## Cottage Gallery

at SKEA

Paintings

Sculpture

Pottery

Stained Glass

Jewelry

Quilting

Wearable Art

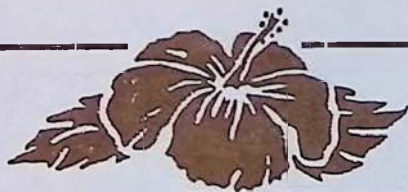
Candles & Woodwork

**328-9392**

An artists cooperative located in the headmaster's quarters of an old Japanese schoolhouse in Honaunau, this site offers a glance into older and quieter Hawaii. A wonderful place to view fine, affordable local art.

Find us at SKEA on Hwy. 11 between mile markers 106-105 on the makai (ocean) side of the road.

OPEN Tues-Sat 9am-5pm



FREE BOTANICAL GARDEN TOUR

Buy one get one Free Papaya Boat filled w/Tuna Salad & Herb Dressing!!!  
see our coupon

Homemade sandwiches, soups, full vegetarian fare, Kona Coffee, fresh baked pies

OPEN 11 am to 3 pm (7 days a week)

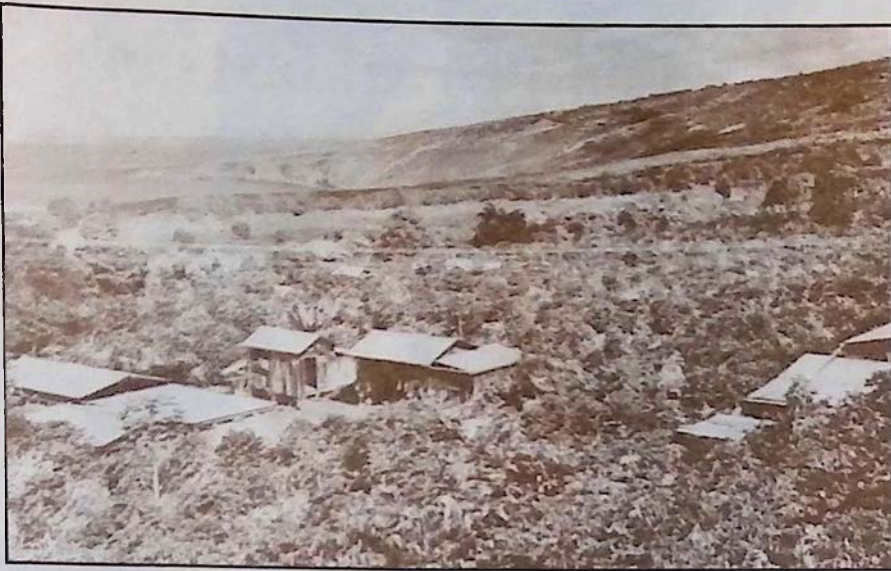
(808) 328-9930 P.O. Box 18, Honaunau, HI 96726

A TRULY RURAL DINING EXPERIENCE



Located in the heart of coffee country, Hwy. 11 south to Hwy. 160 (Painted Church & Place of Refuge)





Looking north across the South Kona coffee country into Kealahou Bay, circa 1930, courtesy of Kona Historical Society.

cently added a rural coffee and gift shop to their operation, where guests will have the opportunity to 'cup up' some 100% pure Kona coffee. Farm and mill tours available at Bay View are also available at the upslope Old Hawaiian Coffee farm and mill that dates back to the late 1800's and also at Langenstein Farm, where coffee is grown, picked, milled and roasted exclusively on the Estate. For personalized group tours at any of these farms feel free to call ahead for an appointment.

At the bottom of Napoopoo Road is Hikiau Heiau at Kealahou Bay, and a white stone monument across the bay that marks the spot where Captain Cook was killed in 1779. The story behind Cook's death was that it was the result of a failed attempt by Cook and his soldiers to take the high chief Kalaniopuu hostage in return for a

cutter that was stolen the night before. Cook, who had come south to the Hawaiian Islands seeking shelter for the winter months, was in search of a northwest passage to England.

A lower coastal road connects Kealahou Bay to *Pu'uhoonua O Honaunau* (Place of Refuge) National Park. In the early years of Hawaiian civilization it was the Place of Refuge that people who broke *kapu* (sacred laws) would attempt to flee. If the *kapu* breaker could reach this sanctuary his life would be spared. Some of these *kapu* that governed the common people included not being allowed to walk in the footsteps of the chiefs or to touch their possessions. Other rules forbade commoners from eating foods reserved for offering to the gods, and women were not allowed to eat with the men. The gathering of wood, seasons for fishing and the taking of animals as well as the *hula* were also controlled under the *kapu* system. Other features at the park are *lokos* (ancient fish ponds), *hales* (thatched roof structures that served as homes), *heiaus* and ancient rock walls. Visitors are usually provided with live demonstrations of ancient Hawaiian crafts such as the building of canoes and tikis at the park.

Back out on Hwy. 11 the **Cottage Gallery** hosts the works of area artists with many affordable pieces being offered as the perfect mementos of your stay in South Kona.

If you are looking for exclusive and private accommodations in this region of South Kona, **Ho'onanea** is prepared to accommodate your lodging needs. The cliff side setting of Ho'onanea, owned and operated by your hosts David and Mary Randall, allows guests a unique experience in business or vacation accommodations. The home is decorated in koa furniture, includes private baths, and lanais that overlook tropical gardens and spectacular Kealahou Bay. Adrienne's Bed & Breakfast serves continental breakfasts on a lanai that boasts ocean views. Private baths/entrances, hot tub and rooms with king and queen size beds in this custom cedar home rounds off your stay.

## Kona Historical Society Museum

The Kona Historical Society, a non-profit organization, was founded in 1976 to collect, preserve and disseminate information about the history of the Kona districts on the island of Hawaii. It maintains a growing reference library and archive containing photographs, manuscripts, maps and oral histories as well as a small collection of artifacts.

Historical Photo Exhibits on display every month  
Museum Hours:  
9:00 a.m. - 3:00 p.m. Weekdays  
Closed All Holidays  
ADMISSION IS \$1.00  
(members & children under 12 free)



Located on Highway 11, one-half mile south of rural Kealahou Bay.  
P.O. Box 398 Captain Cook, HI 96704 TELEPHONE (808) 323-3222

## KEALAKEKUA BAY LODGE

*Vacation or Business Lodging*

*A Beautiful New 2 Bedroom, 2 Bath Home on 5 acres. Fantastic ocean views at 850' elevation. Cool Breezes & Quiet rural setting.*

Fees begin at \$125/night (4 day min.)  
or \$775/week double occupancy.

PH: (808) 328-8019 Fax: (808) 328-8014

yes,

people do come to the Big Island to purchase Koa furniture. This magnificent and rare wood is harvested on Hawaii's uplands. Artist Jerry Benson creates furniture that is shipped worldwide to clients desiring the ultimate in fine furniture that will last a lifetime and beyond.

CUSTOM  
**Koa**  
Art Furniture  
by Jerry Benson

808 • 328-9445  
available for viewing  
by appointment at

# HO'ONANEA

a beautiful and unusual  
vacation rental estate  
overlooking Kealahou Bay.

54 piece  
Collection



## HAMAKUA &amp; KOHALA REGIONS

1. **Kamuela's Mauna Kea View Ph: (808) 885-8425**

Popular private Suite and COTTAGE (each with JFireplace, Kitchette, Sun deck, Telephone and color TV) Bordering Parker ranchlands with panoramic views of 14,000 ft. Mauna Kea. Enjoy Hapuna and Island's best white sand beaches, historic Waipio & Pololu Valleys and world class resorts. A Kamuela tradition of hospitality since 1988!

**Richard & Deb Mitchell, P.O. Box 6375, Kamuela, HI 96743**

2. **Luana Ola B&B Cottages Ph: (808) 775-7727, 1-800-357-7727**

In the coastal village of Honokaa, charming, private, new cottages overlook sweeping ocean views. Kitchenette, full bath, large porch, laundry facilities, private phone, wheelchair accessible, breakfast of fresh fruit, muffins, coffee, teas and juice. Walk to Honokaa town, tennis & golf. Waipio Valley nearby. \$75/night.

**Tim & Jeannie Mann, P.O. Box 430, Honokaa, HI 96727**

3. **Sud's Acres 808-776-1611 Ph: (808) 776-1592, 1-800-735-3262**

We are located on a macadamia farm at 1800' elevation on the slopes of Mauna Kea with a view of the Hamakua coast. Our 2 bedroom cottage with bath, lvg. rm. is 5 mi. to Honokaa & 20 mi. to Waimea.

**P.O. Box 277, Paauilo, HI 96776**

4. **Waimea Gardens Cottage Ph: (808) 885-4550, 1-800-262-9912**

Charming streamside cottage, inspected and rated "Excellent" by the American B&B Assn., has 2 units on 1 1/2 acres in the foothills of the Kohala Mtns. French doors open to private patios; private baths; .2 mi. west of Waimea town; 8 mi. to best beaches. \$100 dbl.; Min. 3 Nts.

**Write: P.O. Box 563, Kamuela, HI 96743**

5. **Waipio Wayside B&B Ph./Fax: (808) 775-0275, 1-800-833-8849**

Experience the gracious hospitality of a 1938 sugar plantation home. We cater to those who wish to unwind in a comfortable atmosphere. Choose from 5 unique bedrooms, 2 with full bath, 1 with 1/2 bath. 1 night stay \$70-\$100, multiple nights \$60-\$90 plus tax.

**Jackie Horne, P.O. Box 840, Honokaa, HI 96727**

## HILO REGION

6. **Maureen's Bed & Breakfast Ph: (808) 935-9018**

The former Saiki mansion, built in 1932, offers a Japanese tea room, koi ponds and botanical gardens. The home is located across from swimming and snorkeling and is convenient to downtown Hilo. Breakfast is generous and includes tropical island fruits.

**Please phone for availability.**

7. **Our Place Papaikou's B&B Ph: 1-800-245-5250, (808) 964-5250**

Located 4 miles north of Hilo on Rt. 19. Our 4 bedrooms are in a modern cedar home. Overlooking a stream, tropical vegetation, common lanais lead to the bedrooms, cathedral living room, library, TV, fireplace, grand piano. Full continental breakfast \$50-\$65.

**Box 469, Papaikou, HI 96781**

## KAU REGION

8. **Becky's B&B Ph./Fax: (808) 929-9690 or 1-800-235-1233**

Rooms affordable \$38 up, with private baths & entrance, full breakfast cable TV. Black or Green sand beaches, swim with turtles, golfing. Or after a long day, just sit in our whirlpool spa & enjoy a lovely evening under the stars. Our town, gives you a feeling for old Hawaii.

**Becky & Chuck McLinn, P.O. Box 673, Naalehu, HI 96772**

9. **Bougainvillea B&B Ph./Fax: (808) 929-7089 1-800-688-1763**

Nights & Breakfasts to Remember. In historic "Kau" district between Kona & Hilo. Near green & black sand beaches, South Point & Ocean View. Rooms-pvt. bath, entrance & TV/VCR. - Pool & spa. Hosts Martie & Don Nitsche share secrets of Hawaii. "Your home to our home."

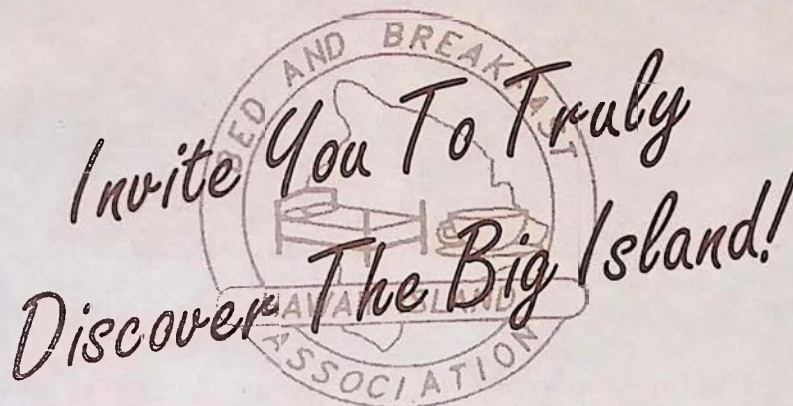
**P.O. Box 6045, Ocean View, HI 96704**

10. **Wood Valley B&B Ph:(808) 928-8212, 1-800-854-6754**

Vintage plantation home/farm- in misty uplands above rural sugar town. Near Green & Black sand beaches, ocean view. Unique outdoor bath and steam house, quiet healing environment, homegrown breakfast Hawaiian. Gay Friendly.

**P.O. Box 37, Pahala, HI 96777 Fax 808-928-9400**

# Bed and Breakfasts of THE HAWAII ISLAND B&B ASSOCIATION



*Stay in one or more of our unique Bed and Breakfasts located throughout the island. You will enjoy comfortable lodgings at reasonable costs and friendly knowledgeable hosts with inside information on local attractions. We will make your stay memorable and you too will capture the true ALOHA SPIRIT OF THE BIG ISLAND OF HAWAII.*

## KONA REGION

11. **Adrienne's B&B Ph: (808) or 1-800-328-9726 Fax: 808-328-9787**

Our cedar home has an unobstructed ocean view from hot tub on our lanai where a healthy breakfast is served. All rooms w/kings or queens, private baths, entrances, TV, VCR & refrigs.. Near beaches and Place of Refuge. Rates \$40-\$70 with families welcome

**85-4577 Mamalahoa Hwy. #8E, Capt. Cook, HI 96704**

12. **Adrienne's Casa Del Sol B&B Ph: (808) 326-2272 / 1-800-395-CASA**

Footsteps away from ocean, 5 Rms., with ocean views, pr. baths, lanais, TV. Bkft. buffet served pool/spa side. Watch surfers at Lyman's Pt., whale & fishing boats. Minutes to world class golf, diving, shopping, restaurants & airport. Rates \$80-\$150

**77-6335 Alii Dr., Kailua-Kona, HI 96740**

13. **Da Third House B&B Ph: (808) 328-8410**

Enjoy the privacy of this quiet, peaceful studio with private entrance & lanai. Unobstructed ocean view. Relax in hammock amidst lush tropical grounds. Minutes from sandy beaches, best snorkeling. Full continental breakfast, King bed, refrig., micro, TV, VCR, full bath. Rates \$50-\$60

**P.O. Box 321, Honaunau, HI 96726**

14. **Hale Maluhia, Ph: (808) 329-5773, US: 1-800-559-6627,**

Up-Country Kona Plantation Living just 3 miles to Kailua-Kona with easy airport access. Big Beds, Pvt. Baths, Spa, Stream, Waterfalls, VCR Lib. Fresh ranch eggs, homemade breads, local fruits & juices, Pure Kona Coffee. Snorkle & Beach Equip. Rooms from \$50, Cottages from \$100, fax 326-5487.

**76-770 Hualalai Rd, Kailua-Kona, HI 96740**

15. **Merryman's B&B Ph: (808) 323-2276 1-800-545-4390**

Charming ocean view B&B in Kealakekua, minutes from the best snorkeling. Enjoy immaculate, spacious rooms furnished w/antiques & fresh flowers. A delightful Hawaiian breakfast of fresh fruits, chef's special & Kona coffee is served each morning. Snorkel gear & beach supplies provided.

**P.O. Box 474, Kealakekua, HI 96750**

*Waimea Gardens Cottage*



*Adrienne's Casa Del Sol*



*Chalet Kilauea*

**16. Rosy's Rest Ph: (808) 322-REST**

For those who love up country old Hawaii and natural beauty. A panoramic view of miles of Kona Coast shoreline. Ohia "TWIG" Bed inspires country cottage look. Private bath, TV, VCR, low rates. Walking distance to Holualoa town. Home of many artists, galleries and shops.

**Rosy's Rest, 76-1012 Mamalahoa Hwy., Holualoa, HI 96725**

**17. Three Bears's B&B Ph/fax: (808) 325-7563, 1-800-765-0480**

Enjoy spectacular ocean views from our new cedar home nestled amongst tropical fruit trees & flowers. Located above Kona Coast Beach Park, our rooms feature private baths, TV, micro, refrig., coffee maker. A hearty breakfast is served on the lanai. Wir sprechen Deutsch.

**Anne Stockel, 72-1001 Puukala, Kailua-Kona, HI 96740**

**VOLCANO REGION**

**18. Carson's Volcano Cottage Ph: (808) 967-7683 1-800-845-LAVA**

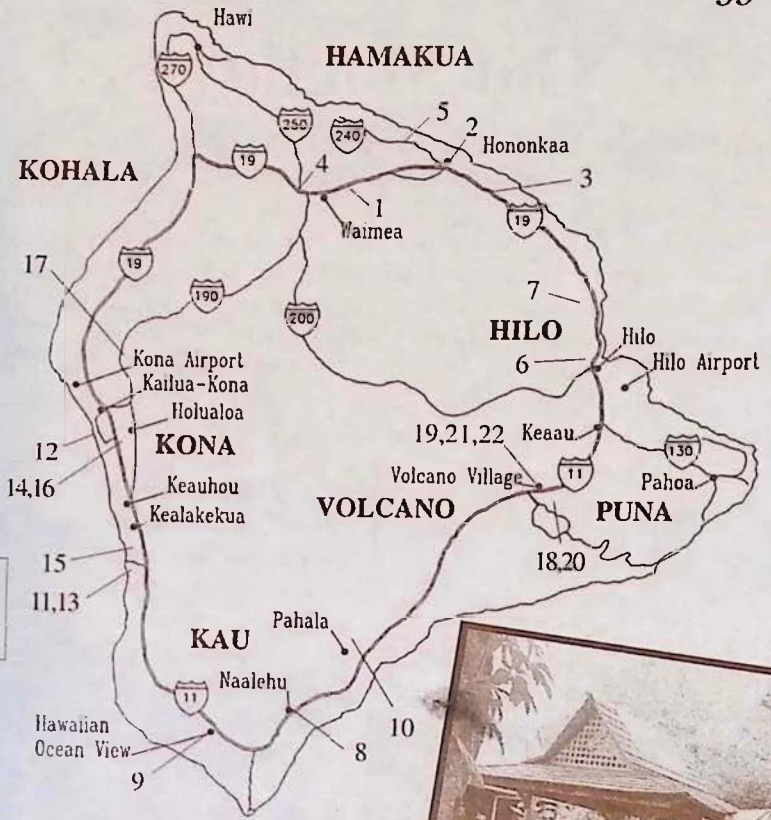
Secluded, peaceful B&B next to Volcano Ntl. Park. Beautiful theme rooms, with botanical garden views. Unique Bromeliad collections. Romantic outdoor jacuzzi. All rooms have private entrances and baths. Some with fireplaces. Rates start at \$65.00 night.

**P.O. Box 503, Volcano, HI 96785**

**19. Chalet Kilauea-The Inn at Volcano Ph: 1-800-937-7786**

EXPLORE TREASURES FROM AROUND THE WORLD. Amazing Theme Rooms, Tree House suite (\$75-\$175). Amenities include: jacuzzi, TV, fireplace, library, sunken tub, robes, flowers, chocolates, maid service, afternoon tea and a candlelight 2-course gourmet bkfst. Just outside Volcanoes National Park.

**P.O. Box 998, Volcano Village, HI 96785**



*Hale Maluhia  
Bed & Breakfast*



*Wood Valley  
Bed & Breakfast*

**20. Hale Ohia Cottages Ph: (808) 967-7986, 1-800-455-3803**

Noted in the NEW YORK TIMES, the SOPHISTICATED TRAVELER, historic hideaway, unique architecture, garden setting, fireplaces, heated Japanese Furo, breakfast brought to your room. All accommodations have private baths. One mile from Natl. Pk., Rates: \$60 to \$95.

**Michael Tuttle, Box 750, Volcano, HI 96785**

**21. Lokahi Lodge Ph: (808) 985-8647 or 1-800-457-6924**

Newest, affordable LUXURY B&B in Volcano. 1 mile to Volcano Ntl. Park, offers accommodations with private baths & entrances to each room. A sumptuous breakfast includes fresh baked homemade bread, juices, fruits, jams, coffee and teas. A haven for those who want to be pampered!

**P.O. Box 7, Volcano, HI 96785**

**22. My Island B&B Ph: (808) 967-7216, 808-967-7110, Fax: 808-967-7719**

An 1886 historic missionary home at Kilauea Volcano surrounded by a 5 acre botanical estate. Rooms in main 3 story house with shared or private bath. Couples, singles & families welcome. Full breakfast. \$30 to \$75. All the macnuts you can eat.

**Gordon & Joann Morse, P.O. Box 100, Volcano, HI 96785**

## Our Monthly Bed & Breakfast Review

**KAMUELA'S MAUNA KEA VIEW B&B:** Innkeepers: Richard and Deb Mitchell, P.O. Box 6375, Kamuela, HI 96743 (808) 885-8425 Rates: \$55 to \$75 Notes: Private entrances and baths.

Kamuela's original and world renown innkeepers offer all the premier amenities in their private suite and cottage: fireplaces equipped kitchenettes, flower bedecked sun decks, telephones, color TV and many extra design features. All purposely at Kamuela's most hospitable rates.

Richard, a retired manager from Parker Ranch, designed and built this European inspired chalet to incorporate the expansive sweeping views of emerald ranchlands backdropped by majestic 14,000 foot Mauna Kea.



Views of emerald ranchlands and Mauna Kea at Kamuela's Mauna Kea View Bed & Breakfast

Deb, a seamstress, instructor and head of Ben Franklin Fabric Department created the romantic interior decor. Their motto of hospitality: "Here you have a home in Hawaii" has graced friendly folks from 44 states and 21 countries.

Kamuela is the charming heart of old Hawaii with Hawaii's best white sand beaches inviting below on the coast, spectacular Waipio & Pololu valleys to explore, famous selection of restaurants owned by European chefs, and convenient home base for touring both Kona & Volcano, its easy to see why this uniquely beautiful area is a preferred location on the Big Island.

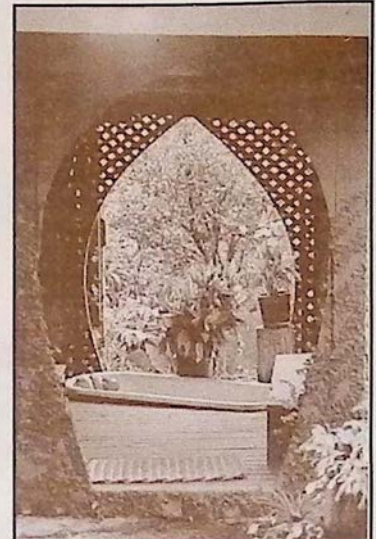
### WOOD VALLEY BED & BREAKFAST:

Innkeeper: Jessie Hillinger, P.O. Box 37, Pahala, HI 96777. (808) 928-8212, 1-800-854-6754. Rates: \$35 single, \$50 double, Notes: Smoke and chemical free - Shared bath - Mostly women - Gay Friendly.

#### OFF THE TOURIST TRACK

#### BUT CLOSE TO THE POWER PLACES

Near the southernmost tip of the Big Island is Wood Valley, a place where towering eucalyptus and lush profusion of fragrant ginger line the shady byways. Wood Valley B&B is a cozy plantation home on 12 acres of pasture and gardens where one can see the ocean, watch the weather change and experience the serene seclusion of one of the Island's more mystical and enchanted places. Visitors may want to explore the valley, visit Wood Valley Temple, a Tibetan Buddhist retreat, swim with the turtles at Punalu'u Black Sand Beach, play 18 holes of golf at Sea Mountain Golf Course, hike to Mahana Bay, the green sand beach at KaLae, South Point, or you may just want to enjoy the peaceful days and dark starry nights, read from the extensive library, watch videos or Satellite TV, lounge in the outdoor tub, take a steam-bath and have a massage from your host, who is a licensed practitioner of LomiLomi, an ancient form of Hawai'ian healing. A half hours drive takes you to Volcano National Park with over 150 miles of hiking trails and Halemaumau Caldera, home of the fire Goddess Pele. Breakfast includes locally grown fruit, homemade baked items, eggs from the coop and 100% Kona Coffee. Jessie encourages the spirited visitor to encounter people and places that others would seldom discover.



Outdoor bath and shady setting at Wood Valley Bed & Breakfast.

## Coffee Talk on Local Art

### Ellen Crocker From the Cottage Gallery

Ellen Crocker studied drawing, oil painting, pastel, watercolor and textile arts from a very young age. At the age of 8 she was introduced to the art of Sumi-e (a traditional Japanese ink brush art) which made a lasting impression upon her. Throughout high school Ellen was the set designer for all theater productions, winning several state championships with her designs and execution. From the age of 13 she worked as a photographer and began creating illustrations for medical textbooks at the University of Alabama Medical Center. This lasted until she was 20. After continuing for two years her education at the University of Alabama in Birmingham Ellen decided to travel to Europe to see the original art she was so enchanted by.

In 1973, Ellen and her husband Charlie moved to Hawaii where she had the opportunity to study with Japanese artist, Koh Itoh, who taught her the traditional aspects of Sumi-e. With each visit to Hawaii Koh Itoh expanded Ellen's knowledge of Sumi-e eventually moving the lessons into color and abstract art. In addition to her apprenticeship under Koh Itoh, Ellen also studied with Kona artists, John Thomas, Hiroki Morinoue, Phan Nguyen Barker and Gayle Anderson.

Today Ellen operates an orchid nursery on the family coffee farm in Captain Cook along with her husband and two sons, Sam and Andrew. Ellen has participated in several juried shows, the first being at Studio 7 in 1982. In 1989 her Sumi-e and watercolor paintings were featured in a one woman show at Holualoa's Hale' O Kula Gallery. In 1993 her work was selected for the Hawaii Craftsmen Annual Exhibition "New Directions". This was the first time a piece of Ellen's was selected for a juried show. Her painting, "Evelyn's Orchid" was selected and published in the first edition printing of *Hawaii Island Artists and Friends of the Arts*.

Ellen is very active in the community, whether it be through art, orchids, children or as an active 12 year member of SKEA (South Kona Education Association) where she has served both as member and teacher. She is one of the charter artists of the Cottage Gallery (see page 32) in Honaunau and also a charter member of the Kona Daifukuji Orchid Club. She works as an artist in the schools through the Department of Education, SKEA and in conjunction with The State Foundation on Culture and the Arts as well as serving as a coordinator for the adult art workshops sponsored by SKEA during 1993/94. Ellen Crocker continues to love her work and has discovered that it is also wonderful teaching others to appreciate art.



EDWARD'S  
AT THE TERRACE



Restaurant  
La Bourgogne

CAFE  
Pesto

# Big Island Dining Experiences



KILAUEA LODGE

DON'S Family DELI



## HILO

**CAFE PESTO:** (pgs. 13) Cafe Pesto has extended its service to the historic S. Hata Building in downtown Hilo. While the cuisine remains similar to what is offered at the original Kawaihae location diners can experience the tastes of wood fired pizzas and local dishes such as fresh fish and lomi lomi served on a bed of noodles. Organic produce and edible flowers complement the reasonably priced food which is always "an adventure in taste".

## KOHALA / HAMAKUA

**BAMBOO RESTAURANT & GALLERY:** (pg. 24) At Bamboo you will find warm "Old Hawaii", featuring fine Hawaiian Regional Cuisine and "Local Style" food. Located in a fully restored historic building, Bamboo is a tropical restaurant, with "the best atmosphere on the island!" Here, local people gather in the deep old wicker chairs for passion fruit margaritas, Hawaiian entertainment, and Sunday Brunch. Try to catch one of their "theme nights" for a truly special evening. Browse and find a gift in the Kohala Koa Gallery of fine art and Pacific handcrafts. Open for Lunch & Dinner: Tuesday-Saturday till 9:30pm. Sunday brunch, 9-2:30pm. Closed Mondays.

**CAFE PESTO:** (pg. 23) Cafe Pesto has earned a reputation as an innovator of provocative island cuisine specializing in Pacific rim pizzas, pastas, salads and seafood served in a setting of casual elegance. The menu draws upon fresh organic produce from Puna and edible flowers and herbs from Hualalai and Volcano. With locations in downtown Hilo and south Kohala's Kawaihae, Cafe Pesto is reasonably priced and always, "an adventure in taste".

**DON'S FAMILY DELI:** (pg. 25) Just 6 miles before the end of the road there is an oasis of food and drink. A variety of meats, cheeses and breads. That's what makes it a deli. Also bagels, cream cheese, and lox and cappuccino make it a good place to sit and talk. Our garden room faces the King's statue across the road. To round out the menu we cater to vegetarians with quiche, enchiladas and lasagnes. We always have two soups, fresh carrot juice and our famous fruit smoothies and remember that everything travels well; to the end of the road at Pololu Valley lookout and the beach parks near by. Deserts, salads and dip ice cream also. Plenty of parking and always a refreshing breeze.

**SIMPLY NATURAL:** (pg. 14) Located in Honokaa town, Simply Natural combines a flare for fun and nostalgia as guests are greeted daily by Sharon Bethausser, owner and operator of this one woman show. The ice cream parlor/deli/soda fountain delivers one of the more unique dining experiences you will ever find. Sharon's breakfasts include such fixings as taro pancakes while lunch serves up selections of homemade sandwiches made while you wait. If you decide not to eat you should

at least try a Simply Natural old fashion ice cream soda or a scoop of Hilo ice cream. The spinning stools at the counter and the attached game room conjure up childhood memories to make Simply Natural a choice spot for both young and old.

**WAIMEA COFFEE AND COMPANY:** (pg. 19) Located at Parker Square on Hwy. 19 as you drive through beautiful upcountry Waimea. Sample the finest world-class coffees, cappuccino and gourmet treats at this friendly oasis. David Ellis and his cheerful staff will make you feel at home at this cozy country cafe- a great place to stop for lunch or for a welcome break in your day. Enjoy a variety of estate-grown pure Kona coffee as well as gourmet coffees from around the world, and take advantage of their easy mail order service to send coffee home. A perfect way to savor the relaxed pace and quality lifestyle of this beautiful area.

## KONA

**ALOHA CAFE:** (pg. 28) The Aloha Cafe is located in colorful Kailiui. Open for breakfast, lunch and dinner, the cafe boasts a sunny garden lanai overlooking rolling meadows and shining ocean. Quality & freshness best describe the food. Fresh squeezed orange or carrot juice and fruit smoothies quench any thirst. With an emphasis on vegetarian meals, our fish and pasta specials are complemented by an extensive wine & beer selection. From homemade soup to Mexican entrees to delicious cakes and cookies from our own bakery, the food is fulfilling and reasonably priced. Finished off with our 100% Kona coffee or espresso treats, the Aloha Cafe is a satisfying dining experience. Remember our Sunday brunch from 9am to 2pm.

**EDWARD'S AT THE TERRACE:** (pg. 26) Edward's at the Terrace is Kona's only ocean front restaurant featuring the cuisine of the Mediterranean region of Europe. Edward's is located on the grounds of the Kanaloa Condominiums in Keauhou, and is open for breakfast, lunch and dinner from Tuesday thru Sunday. Let the soft crash of the waves soothe your mind as you dine on such things as couscous grilled shrimp and bahaganous, or robust fisherman's soup served under a puff pastry crust. For lunch you may select an old familiar favorite such as salade nicoise topped with fresh grilled tuna or one of the best burgers you'll have anywhere. Breakfast offers such treats as apple spice sausage patties and a family special of eggs and bacon.

**LA BOURGOGNE FRENCH RESTAURANT:** (pg. 40) Located just 3 miles south of Kailua-Kona this small, intimate restaurant makes you think you might be at a delightful French Country Inn. Chef/Owner Ron Gallaher features the simple, flavorful food of the Burgundy Region of France created from the freshest of local ingredients. In addition, La Bourgogne's wine list includes quality selections from Burgundy and California at modest prices. Open Monday through Saturday from

5:30pm to 10:00 pm. Reservations recommended at 329-6711. All major credit cards accepted.

**SIBU CAFE:** (pg. 27) Serving classic style Indonesian cuisine Sibü Cafe blends its sidewalk cafe atmosphere with its flavorful combination plates and international beer and wine selection to create the perfect outdoor dining experience at Banyan Court Shopping Mall in the bustling downtown area long Alii Drive. Owner Peter Weinstock attributes the success of his restaurant to the talent and dedication of his staff, many of whom have been with him for several years. All food is prepared using only fresh ingredients with a heavy emphasis of garlic in many dishes. Sibü's reputation for serving large portions and its well known brown rice has lifted its reputation among local diners.

**WAKEFIELD GARDENS & RESTAURANT:** (pg. 32) For that old time feeling provoking life-long memories visit Wakefield Gardens & Restaurant. Enjoy relaxed charm while dining amid the personal, friendly, uncrowded, fragrant botanical atmosphere. World-wide letters relate our best features. Aloha Spirit- a warm welcome giving an "at home" feeling; Old Time Hawaiian Music, Fresh - Clean - Wholesome Food; Something for everyone and our Strawberry Papaya filled with special tuna salad received 4 stars in Gourmet Magazine; Kona hot or iced coffee, Kids cheeseburgers, vegetarian fare, homemade macadamia nut pies, reasonable prices. Free botanical garden self-guided tours. Open 11am - 3pm. Spread the word - the magic of romantic Hawaii still exists. Aloha!

## PUNA

**THE GODMOTHER - RISTORANTE ITALIANO:** (pg. 10) A pleasant surprise awaits you. Located amid romantic surroundings on Main Street in Historic Pahoia Village, the large menu features delectable pasta selections and traditional New York-style family recipes. With indoor-outdoor dining, the Godmother is serving breakfast and lunch from 8am until 3 pm and dinner from 5 pm until 11 every day. Stop by, meet the family, enjoy the ambiance and savor the food. Daily specials, a full bar and a friendly staff combine to create the perfect occasion. Major credit cards welcome. Ciao Bella!

## VOLCANO

**KILAUEA LODGE:** (pg. 7) Well known for Chef/Owner Albert Jeyte's Continental-local cuisine, Kilauea Lodge is located in the cool sub-alpine rain forest region of Volcano. The misty region encourages a hearty appetite and Chef Albert, whose menu favors fish and fowl, does not disappoint. An inspired wine list, helpful staff, Hawaiian decor, and historic Fireplace of Friendship, make Kilauea Lodge a memorable experience. Open nightly 5:30-9:00pm. Reservations recommended. Located one mile Hilo-side of Volcanoes National Park.

The  
Godmother  
Ristorante Italiano



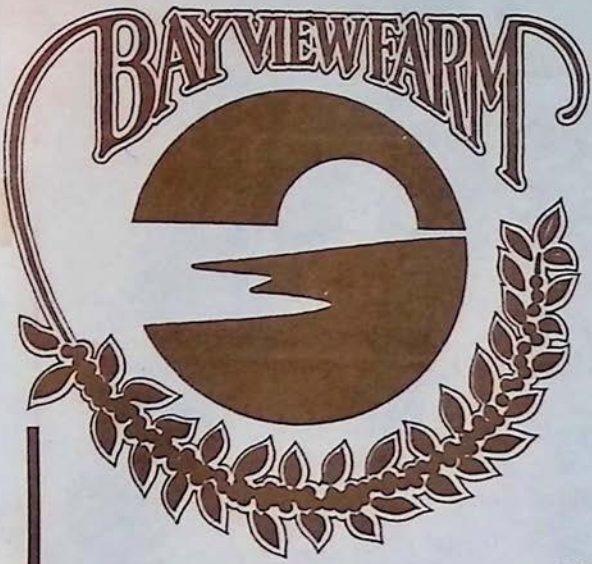
bamboo



WAKEFIELD  
GARDENS  
& RESTAURANT

# October On The Big Island

- 2,8,15  
22,23,29 **BRONZE SCULPTURE**  
Big Island sculptor Henry Bianchini will begin a course on casting bronze sculptures using the fascinating lost-wax technique. Participants will model, invest, cast, finish and mount their very own bronze sculpture. The first three sessions deal with sculptural design and modeling. In the next sessions students will invest, burn-out, cast, pour and mount their sculptures. Volcano Art Center, 967-8222 for more info.
- 3-20 **KIDS ACTING UP!**  
Actress/director/educator Judi Floyd and artist-in-residence Jerry Tracy team up to teach a dynamic six-session course for kids ages 8 - 14. Included will be scene study from famous plays, how to create a believable character, improvisation, mime, and monologues. The culminating Acting Up Showcase performance a 7pm in Kilauea Theater on October 20. Volcanoes National Park, 967-8222.
- 4 **AFTER DARK IN THE PARK PRESENTS: "CASSOWARY STEW AND POSSUM PIE: A MIXED PLATE OF NATURAL HISTORY FROM PAPUA NEW GUINEA"**  
Lying north of Australia, Papua New Guinea is the largest island in the world and is home to an astonishing variety of plants and animals. Some of the flora and fauna of Hawai'i originated at this biological hub of the Pacific. Join wildlife biologist Thane Pratt for his slide program, and learn why Australia is really just a offshore island of Papua New Guinea. Kilauea Visitor Center Auditorium, 7:00pm, Volcanoes National Park, 967-7184.
- 5-29 **"PRECIOUS ART CHAMBER"**  
Chinese Brush Painting with artists from Honolulu. Coordinated by Lam Ol Char, with a distinguished assortment of art. Reception on October 8, from 11am to 2pm. Wailoa Center, Hilo, 933-4360
- 5-31 **"MIXED MEDIA"**  
Artist Val Loh who works in all the media, shows us some of her work in October. Wailoa Center Mini Gallery, Hilo, 933-4360.
- 8 **DIETRICH VAREX OPENING RECEPTION**  
at Volcano Art Center Gallery. Varex's exhibit entitled "Local Color" will open on Saturday with a reception and run until October 31. 1pm to 4pm, Volcano Art Center, 967-8222.
- 8 **CHILDREN'S CERAMICS**  
Well-known ceramist Chiu Leong teaches pottery at his Volcano Studio to children, ages 7-12. Focus is on hand building techniques, both slabs and coils. Students do impressions from nature, miniature sculpture, bowls, masks and simple firing and glazing. 9:30am to 11am, Volcano Art Center, 967-8222.
- 8-12 **HAND BUILT CERAMICS FOR TEENS AND ADULTS**  
Master potter Chiu Leong is offering six sessions at his Volcano studio to teach participants hand building techniques. Students will also learn to work with impressions, build sculptural forms, create bowls and tiles, and glaze and fire all of the above. 12pm to 2:30pm, Volcano Art Center, 967-8222.
- 13 **LADYSMITH BLACK MAMBAZO**  
South Africa's premiere group will be performing one show only at the Kahilu Theatre in a benefit for Hawaii Artists in the Schools, Inc. Tickets are \$20 - \$25. 7:30pm, Kahilu Theater, Waimea, 964-1693.
- 14,15 **COUNTESS DRACULA**  
8pm, Aloha Theater, Kainaliu, 322-9924, see pg. 28.
- 18 **AFTER DARK IN THE PARK PRESENTS: "NA MO'OLELO O KA'U - THE STORIES OF KA'U"**  
The majestic district of Ka'u is well known for its stories and proverbs. Residents Pele and Keola Hanoa will be sharing traditional stories, family life styles and some history of Ka'u. Using slides and video, Pele and Keola will acquaint you with the unique life styles and myths with the Hawaiian Practitioners of Ka'u. Kilauea Visitor Center Auditorium, 7:00pm, Volcanoes National Park, 967-7184.
- 21,22 **COUNTESS DRACULA**  
8pm, Aloha Theater, Kainaliu, 322-9924, see pg. 28.
- 22 **TENTH ANNUAL KOHALA COUNTRY FAIR**  
The Big Island's North Kohala District will host the tenth annual Kohala Country Fair on October 22nd, from 9am to 4pm at the historic Hawi Mill Center. This year's theme, "Celebrate Kohala", headlines the day-long event, which will feature entertainment from well known local musicians, as well as over 50 booths offering delicious gourmet specialties from all island cuisines, arts and crafts, locally grown produce, plants, and games for the children. A special feature of the Kohala Country Fair will be the cooking and baking contest. Both men and women are invited to participate by bringing their best smoked meat or smoked seafood recipe for the cooking contest, and the baking competition will be looking for the best taro or breadfruit recipe and will be open to adults as well as children. 889-5317 for info.
- 25 **AFTER DARK IN THE PARK PRESENTS: "HO'OKAHUA - LAYING THE FOUNDATION FOR HAWAIIAN SOVEREIGNTY"**  
Join Hiko'ula Hanapi and Ino Girard as they take you on a historical overview from 1823 to the present focusing on reasons for a Hawaiian sovereignty movement and an introduction to sovereignty models. A 27 minute video presentation will also be presented. Kilauea Visitor Center Auditorium, 7:00pm, Volcanoes National Park, 967-7184.
- 28-30 **COUNTESS DRACULA**  
8pm with a 4pm matinee on the 30th, Aloha Theater, Kainaliu, 322-9924, see pg. 28.
- 29 **HISTORIC JEEP TOUR TO PU'UWA'AWAA RANCH**  
Open to island visitors and local residents. Call the Kona Historical Society for information at 323-3222
- 29 **THE ART OF TRASH**  
Multi-mixed media artist Ira Ono again offers his popular workshop in the art of making art from "trash". In this intensive one-day workshop Ira gives students inspiration and hands-on instruction on how to transform "trash" into whimsical ironic, humorous, highly individualistic works of art. 9am to 4pm. Volcano Art Center, 967-8222.
- 30 **RAKU SUNDAY**  
Chiu Leong, master ceramist and raku artist, opens his studio to those who are interested in the art of glazing and firing raku. Students purchase a tea bowl which they will glaze and fire under Chiu's supervision and guidance. While pieces are being fired he teaches techniques and history of raku. 11am to 3pm, Volcano Art Center, 967-8222.
- 31 **COUNTESS DRACULA**  
8pm, Aloha Theater, Kainaliu, 322-9924, see pg. 28.



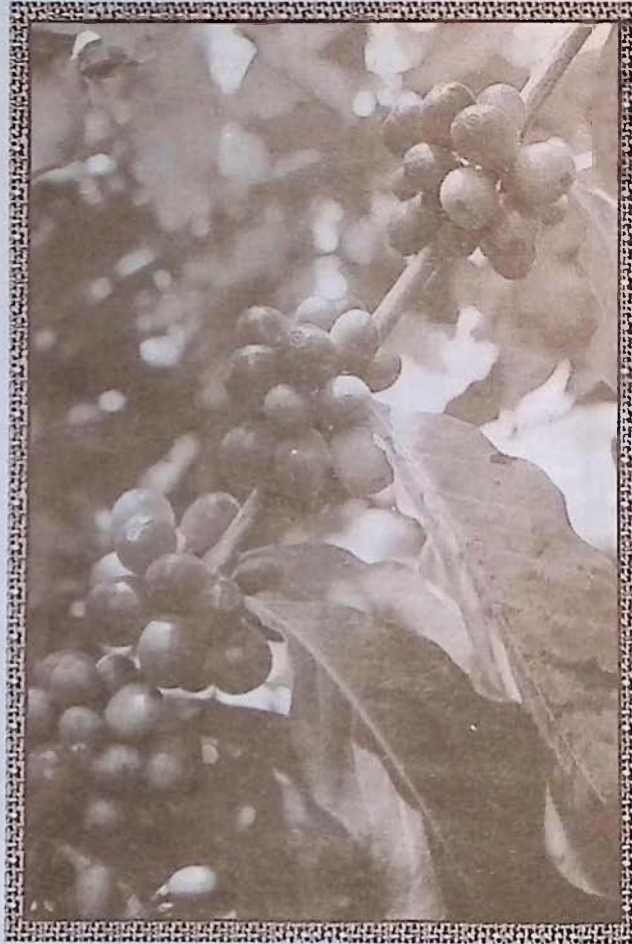
# Coffee Mill and Farm Tour

Open Daily 9am to 5pm (FREE)

See First Hand How  
Coffee is Farmed and  
Milled in Kona

Historic Kona  
Coffee Photo Display

18th & 19th Century  
Hawaiian Prints



Specializing only in  
100% Kona™ Coffee

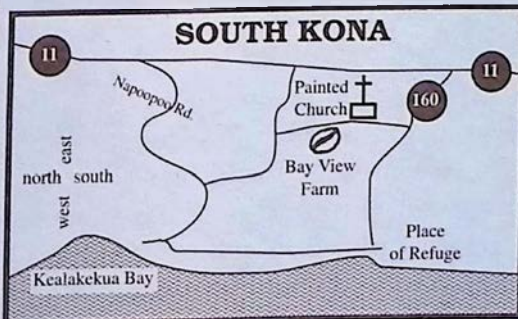
Complete Processing  
& Roasting Facility

Fresh Local Fruit...

Spectacular Views of Kealakekua Bay from our Tasting Room!

*(Call ahead for special group tours)*

As the io flies...  
*(io means Hawaiian hawk)*



...Bay View is located 1/2 mile from Painted Church and 2 miles from Place of Refuge



Call or Write  
For a Free Brochure:  
**1-800-662-5880**  
**(808) 328-9658**  
Fax orders: **328-8693**  
P.O. Box 680, Honaunau,  
HAWAII 96726

# Daily Farm Tours

## Langenstein Farm

SUN DRIED BEANS

HAND PICKED TO ROAST



*J. Langenstein*

Come and visit our family owned Kona Coffee Estate where coffee is hand picked and milled the old fashioned way. Our estate certified 100% Kona™ coffee beans are sundried and air roasted to perfection. We personally guarantee the pure and fresh taste of Kona in every bag of coffee we sell.

Open Daily (You may call ahead for an appointment)  
Located between mile markers 105 & 106 on Hwy. 11  
(just north of Honaunau State Baseyard - Look for sign)

**808-328-9486**

84-4956 Mamalahoa Hwy., Capt. Cook, HI 96704

# Restaurant La Bourgogne

CUISINE FRANCAISE

## OCTOBER PRIX FIXE MENU

RED PEPPER MOUSSE  
WITH SAUCE AIOLI (GARLIC MAYONNAISE)

*Bonnet Macon Villages, 1992*

CASSOULET DE TOULOUSE  
(TRADITIONAL DISH OF SLOW COOKED MEATS, BEANS & SAUSAGES)  
VEGETABLE RATAOUILLE

*Christophe Vineyards Reserve Pinot Noir, 1992*

ALMOND TULIP CUP WITH THREE SORBETS

100% Pure Kona Coffee



\$36 PER PERSON

Served in addition to our regular menu throughout the month

Open 5:30 to 10pm, Monday through Saturday

Located Just 3 miles south of Kailua-Kona on Hwy. 11

**RESERVATIONS RECOMMENDED**

**329-6711**

# Waipio Wayside

## Bed & Breakfast Inn

(10 minutes from Waipio Valley)



*Enjoy a peaceful and relaxing retreat*

Five Comfortable Bedrooms

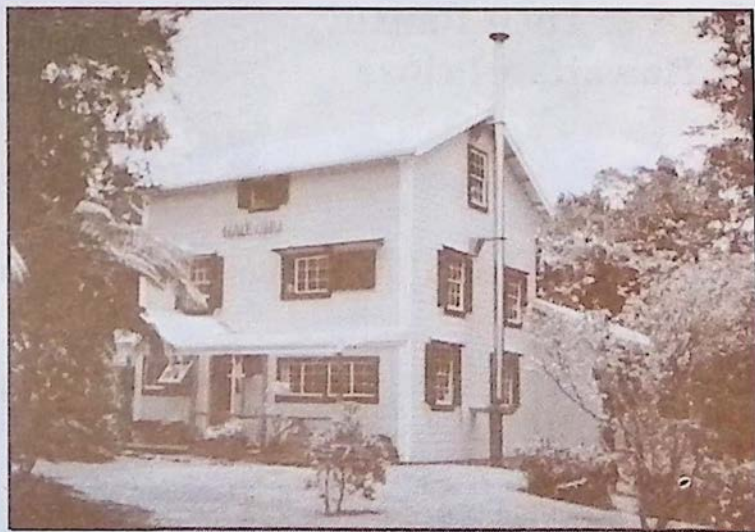
Large Deck with Double Hammocks

Generous Homemade Breakfast

Prices range from \$50 - \$100

**775-0275 or 1-800-833-8849**

# MY ISLAND BED & BREAKFAST AT VOLCANO



Featuring...

- ~All the macadamia nuts you can eat~
- ~A variety of rooms at a range of prices~
- ~We serve a "stuff-yourself" breakfast~
- ~Located on a 5-acre estate full of flower gardens~
- ~Personalized touring information for East Hawaii~
- ~Come spend time in our 108-year old historic house~

**967-7216 OR 967-7110**

(See our listing in B&B section)